

DEPARTMENT OF THE INTERIOR  
Office of U. S. Sur-Gen.

San Francisco, California

October 28, 1922.

I, John Flover, U. S. Surveyor-General for California,  
do hereby certify that the annexed transcript of the field  
notes of Sections 26, 27 and 35 in Township 1 South, Range  
19 West, San Bernardino Meridian, California,  
is a

True and literal exemplification of the same on file in this  
Office.

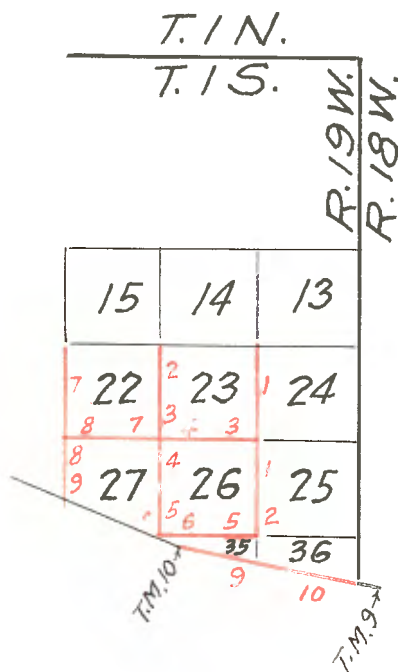
IN TESTIMONY WHEREOF I have hereunto subscribed my name and  
caused the seal of this Office to be affixed on the day and  
year above written.

John Flover

United States Surveyor-Gen.

for \_\_\_\_\_

OFFICIAL SEAL



Subdivisions T 1 S. R 19 W., S.B.M.

December 8, 1896, at 8h on a.m., l.m.t., I set off  
34°04' N. on the lat. arc; 22° 46' S. on the decl.  
arc and determine a true meridian with the solar  
S. 0°01'E. on a true line between sections 23 and 24

x x x x x x x x

30.00 Set a sandstone 24 x 12 x 10 ins., 18 ins. in  
the ground for corner to sections 23, 24, 25 and  
26, marked with 1 notch on E. and 2 notches on S.  
edges; and raised a stone mound, 2 feet high, 3½ feet  
base W. of corner.

Fits impracticable.

Land mountainous

Soil 3rd rate.

Scattering oak timber

Dense undergrowth of chaparral.

Mountainous land 30.00 chs.

-----  
S. 0°01' E. on a true line between sections  
25 and 26

Ascend through dense brush

17.00 Top of ridge 200 feet above section corner bears  
N. 70° E. and S. 70° W.  
descend.

35.09 Gulch 10 lks. wide, 550 feet below top of ridge,  
course S. 45° W.  
ascend.

40.00 Set a sandstone 30 x 12 x 10 ins. 22 ins. in the  
ground for ¼ section corner marked ¼ on W. face

and raised a stone mound 2 feet base,  $1\frac{1}{2}$  feet high W. of corner

Pits impracticable.

44.00 Top of spur, 70 feet above gulch bears E. and W. descend.

51.60 Gulch 15 lks. wide, 200 feet below top of spur course S.W. ascend.

61.50 Top of spur 300 feet above gulch bears E. and W. descend.

69.80 Gulch, 8 lks. wide, 200 feet below top of spur, course W. ascend.

74.25 Top of spur 200 feet above gulch, bears E. and W. descend.

77.00 Gulch, 8 lks. wide, 125 feet below top of ridge, course W. Ascend.

80.00 Set a sandstone 20 x 14 x 4 ins., 15 ins. in the ground for corner to sections 25, 26, 35 and 36, marked with 1 notch on S. and E. edges; and raised a stone mound, 2 feet base,  $1\frac{1}{2}$  feet high W. of corner  
Pits impracticable.

Corner set 100 feet above gulch.

Land mountainous.

Soil 3d rate.

Scattering oak timber.

Dense undergrowth of chaparral

Mountainous land 80.00 chs.

-----  
S.  $0^{\circ}01'$  E. on a true line between sections 22 and 23

-x-x-x-x-x-x-x-x-

80.00 Set a sandstone 24 x 12 x 10 ins., 18 ins. in the

ground for corner to sections 22, 23, 26 and 27,  
marked with 2 notches on S. and E. edges; dug pits  
18 x 18 x 12 ins., in each section, 5½ feet dist.  
and raised an earth mound, 3½ feet base, 2½ feet  
high W. of corner.

Land mountainous.

Soil 3d rate.

No timber

Dense undergrowth of chaparral.

Mountainous land 80.00 chs.

-----

- East on a random line between sections 23 and 26
- 40.00 Set temporary ¼ section corner
- 80.10 Intersect N. and S. line 13 lks. S. of corner  
to sections 23, 24, 25 and 26
- Thence I run  
S. 89° 54' W. on a true line between sections 23 and 26  
Descend through dense chaparral.
- 29.75 Gulch 8 lks. wide, 400 feet below section corner,  
course N.W.;  
ascend.
- 32.88 Top of spur 100 feet above gulch, bears N. 45° W.  
S. 45° E.  
Descend.
- 40.05 Set a sandstone 30 x 18 x 14 ins., 22 ins. in the  
ground for ¼ section corner, marked ¼ on N. face and  
raised a mound of stone 2 feet base, 1½ feet high  
N. of corner.  
Pits impracticable.
- 69.00 Gulch 15 lks. wide, 500 feet below top of spur,  
course S. 45° W.  
ascend.

- 70.00 Top of spur 70 feet above gulch, bears N.E. and S.W.  
descend.
- 71.00 Las Transas Canon, 50 lks. wide, course S. 20° W.  
100 feet below top of spur.  
ascend.
- 80.10 The corner to sections 22, 23, 26 and 27  
Land mountainous.  
Soil 3d rate.  
No timber.  
Dense undergrowth of chaparral.  
Mountainous land, 80.10 chs.  
-----  
S.0°01'E. on a true line between sections 26 and 27  
Descend through dense chaparral.
- 15.10 Canon, 12 lks. wide, 200 feet below section corner  
course E.  
ascend.
- 37.70 Top of ridge, 250 feet above canon, bears E. and W.  
descend
- 40.00 Set a sandstone 30 x 18 x 8 ins., 22 ins. in the  
ground for  $\frac{1}{4}$  section corner, marked  $\frac{1}{4}$  on W. face and  
raised a stone mound, covered with earth, 2 feet base  
 $1\frac{1}{2}$  feet high W. of corner.
- 40.10 Gulch, 5 lks wide, 100 feet below top of ridge  
course E.  
ascend.
- 44.80 Top of ridge, 50 feet above gulch, bears E. and W.  
descend.
- 59.25 Gulch, 15 lks. wide, 200 feet below top of ridge  
course E.  
ascend
- 78.00 Top of ridge 250 feet above gulch, bears E. and W.;  
descend.

- 80.00 Set a sandstone 18 x 16 x 8 ins., 12 ins. in the ground, for corner to Sections 26, 27, 34 and 35; marked with 1 notch on S. and 2 notches on E. edges; and raised a stone mound, 2 feet base, 1½ feet high W. of corner.  
Pits impracticable.  
Land mountainous.  
Soil 3d rate.  
Scattering oak timber.  
Dense undergrowth of chaparral.  
Mountainous land 80.00 chs.  
-----
- 40.00 East on a random line between sections 26 and 35  
Set temporary ¼ section corner.
- 80.23 Intersect N. and S. line 14 lks. N. of corner to sections 25, 26, 35 and 36;  
Thence I run  
N. 89°54'W. on a true line between sections 26 and 35  
Descend through dense chaparral.
- 18.50 Canon 25 lks. wide, 500 feet below section corner course S.45° W.; ascend.
- 31.60 Top of ridge, 300 feet above canon bears N.E. and S.W.; descend.
- 40.11½ Set a sandstone 34x10x8 ins., 26 ins. in the ground, for ¼ section corner marked ¼ on N. face and raised a mound of stone, 2 feet base, 1½ feet high, N. of corner.  
Pits impracticable.
- 48.30 Leave chaparral and enter cultivated land, bears N. and S.
- 58.25 Haywood's house bears N.17° W. about 12.00 chs. dist.
- 62.90 Road to Haywood's house bears N. and S. leave cultivated land bears N. and S. and enter dense chaparral.
- 63.65 Las Trancas Canyon, 50 lks. wide, 400 feet below ¼ sec-

tion corner, course S.; ascend.

71.00 Top of ridge, 500 feet above canon, bears N. 20° W.  
and S. 20° E.; descend.

80.23 The corner to sections 26, 27, 34 and 35  
Land mountainous.  
Soil 3d rate.  
Sycamore timber in canons.  
Dense undergrowth of chaparral 65.63 chs.  
Mountainous land 80.23 chs.

-----  
S. 0° 01' E. on a true line between sections 34 and 35  
Descend through dense chaparral.

0.40 Intersect boundary line of Ro. Topanga Malibu Sequit,  
18.63 chs. N. 68° 49' W. from corner No. 10 on  
boundary, which is an oak tree, 14 ins. diam., marked  
and witnessed as described by the Surveyor General,  
and set a sandstone 18 x 14 x 8 ins., 12 ins. in the  
ground, for closing corner to sections 34 and 35,  
marked C.C. on N. with 2 grooves on E. and 4 grooves  
on W. faces, and raised a stone mound 2 feet base, 1½  
feet high, N. of corner.

Pits impracticable.

Land mountainous.

Soil 3d rate.

No timber.

Dense undergrowth of chaparral.

Mountainous land 0.40 chs.

-----  
From the corner to sections 26, 27, 34 and 35, I run,  
West, on a true line between sections 27 and 34,  
Ascend through dense chaparral.

1.03 Intersect boundary line of Ro. Topanga Malibu Sequit,  
1.11 chs. N. 68° 49' W. from closing corner to sections

34 and 35, and set a sandstone 24 x 10 x 8 ins. in the ground for closing corner to sections 27 and 34 marked O.C. on E. with 1 groove on S. and 5 grooves on N. faces and raised a stone mound, 2 feet base, 1½ feet high, E. of corner.

Pits impracticable.

Land mountainous.

Soil 3d rate.

No timber.

Dense undergrowth of chaparral.

Mountainous land 1.03 chs.

December 10, 1896.

-----  
S. 0°02' E. on a true line between sections 21 and 22  
x x x x x x x x

80.00 Set a sandstone 36 x 16 x 5 ins., 27 ins. in the ground, for corner to sections 21, 22, 27 and 28, marked with 3 notches on E. and 2 notches on S. edges and raised a stone mound covered with earth, 3½ feet base, 1½ feet high, W. of corner.

Land mountainous.

Soil 3d rate.

Scattering oak timber.

Dense undergrowth of chaparral.

-----  
East, on a random line between sections 22 and 27  
40.00 Set temporary ¼ section corner.

80.15 Intersect N. and S. line 20 lks. N. of corner to sections 22, 23, 26 and 27

Thence I run

N. 89°51' W. on a true line between sections 22 and 27,

Ascend through dense chaparral;

18.95 Top of ridge 225 feet above section corner bears N.



- and S. descend.
- 25.00 Gulch, 15 lks. wide, 100 feet below top of ridge,  
course S. 30° E. ascend.
- 40.07½ Set a sandstone, 12x10x5 ins., 8 ins. in the ground  
for ¼ section corner marked ¼ on N. face and raised  
a stone mound, 2 feet base, 1½ feet high N. of corner.  
Pits impracticable.
- 47.50 Top of ridge, 200 feet above gulch, bears N.E. and  
S.W. descend.
- 50.80 Low sag 75 feet below top of ridge bears N. 30° W.  
and S. 30° E. ascend.
- 60.00 Top of spur 60 feet above sag, bears N. 30° W. and  
S. 30° E. descend.
- 80.15 The corner to sections 21, 22, 27 and 28  
Land mountainous.  
Soil 3d rate.  
No timber.  
Dense undergrowth of chaparral.  
Mountainous land 80.15 chs.  
-----  
S.0°02' E. on a true line between sections 27 and 28,  
ascend.
- 4.50 Top of spur 50 feet above section corner bears E. and  
W. descend.
- 21.52 Gulch 12 lks. wide, 75 feet below top of spur, course  
W. ascend.
- 34.50 Top of ridge, 80 feet above gulch bears E. and W.  
descend.
- 40.00 Set a sandstone 18 x 15 x 5 ins. 12 ins. in the  
ground for ¼ section corner marked ¼ on W. face, from  
which bears  
A live oak, 10 ins. diam. S. 2° E. 126 lks. dist.  
marked ¼ S.B.T.

A live oak, 15 ins. diam. S/25° W. 133 lks. dist.  
marked  $\frac{1}{4}$  S.B.T.

40.51 Gulch 10 lks. wide, 25 feet below  $\frac{1}{4}$  section corner  
course W. ascend.

49.08 Intersect boundary line of Ro. Topanga Malibu Sequit,  
15.70 chs. S. 68°49' E. from  $1\frac{1}{2}$  mile corner on line,  
which is a sandstone 12 x 8 x 5 ins., above the ground  
previously set by me, and set a limestone 15 x 12 x 8  
ins. 12 ins. in the ground, for closing corner to  
sections 27 and 28, marked C.C. on N. face, with 3  
grooves on E. and W. faces, and raised a stone mound  
covered with earth,  $3\frac{1}{2}$  feet base,  $1\frac{1}{2}$  feet high N. of  
corner.

Land mountainous.

Soil 3d rate.

Scattering oak timber.

Dense undergrowth of chaparral.

Mountainous land 49.08 chs.

December 12, 1896.

-----  
Re-survey of Rancho Malibu Sequit in Township 1 S,  
R. 18 and 19 W., S. B. M.

From corner T.M.No.10 (in T. 1 S. R. 19 W.) which is  
an oak 14 ins. diam. marked and witnessed as described  
by the Surveyor General.

I run

S. 80° E. on a random line and at

150.70 I arrive at a point N. 10°E. 232 lks. dist. from  
corner T.M.No.9.

Thence

N. 79°07' W. on a true line. Ascend.

40.00 Set a sandstone  $2\frac{1}{2}$  x 10 x 6 ins., 18 ins. in the  
ground, marked  $\frac{1}{4}$  M T M  
T. M.  $\frac{1}{40}$  c. on side of stone facing  
ranch and raised a mound of stone, 2 feet base,  $1\frac{1}{2}$  feet

high, in ranch at right angle to line.

Pits impracticable.

- 47.00 Top of ridge, bears N.W. and S.E. and descend  
62.00 Cross canon 12 lks. wide, course S.E. and ascend.  
75.00 Top of ridge bears N. and S. and descend.  
80.00 Set a sandstone 14 x 12 x 10 ins. 9 ins. in the  
ground marked  $\overset{1}{M} \overset{T}{M}$  T. M.  $\frac{2}{80}$  c on side of stone, facing ranch  
and raised a mound of stone, 2 feet base,  $1\frac{1}{2}$  feet  
high, in ranch at right angle to line.

Pits impracticable.

- 110.30 Cross canon 20 lks wide, course S. 40° W. and ascend  
120.00 Set a sandstone 20 x 14 x 12 ins., 15 ins. in the  
ground marked  $\overset{1}{M} \overset{T}{M}$  T.M.  $\frac{3}{120}$  c on side of stone, facing  
ranch and raised a mound of stone, 2 feet base,  $1\frac{1}{2}$  feet  
high, in ranch at right angle to line.

Pits impracticable.

- 150.72 To corner T. M. No. 10 on east side of Canada Las  
Trancas, 100 lks. wide, course south.

Land broken and mountainous.

Soil 3d rate.

Timber, oak and sycamore.

Dense undergrowth chaparral.

September 30, 1896.

-----  
Surveyed by James R. Glover, Deputy Surveyor,

Contract dated September 7, 1896.