

1853

DEPARTMENT OF THE INTERIOR
Office of U. S. Surveyor General

San Francisco, California,
November 8, 1922.

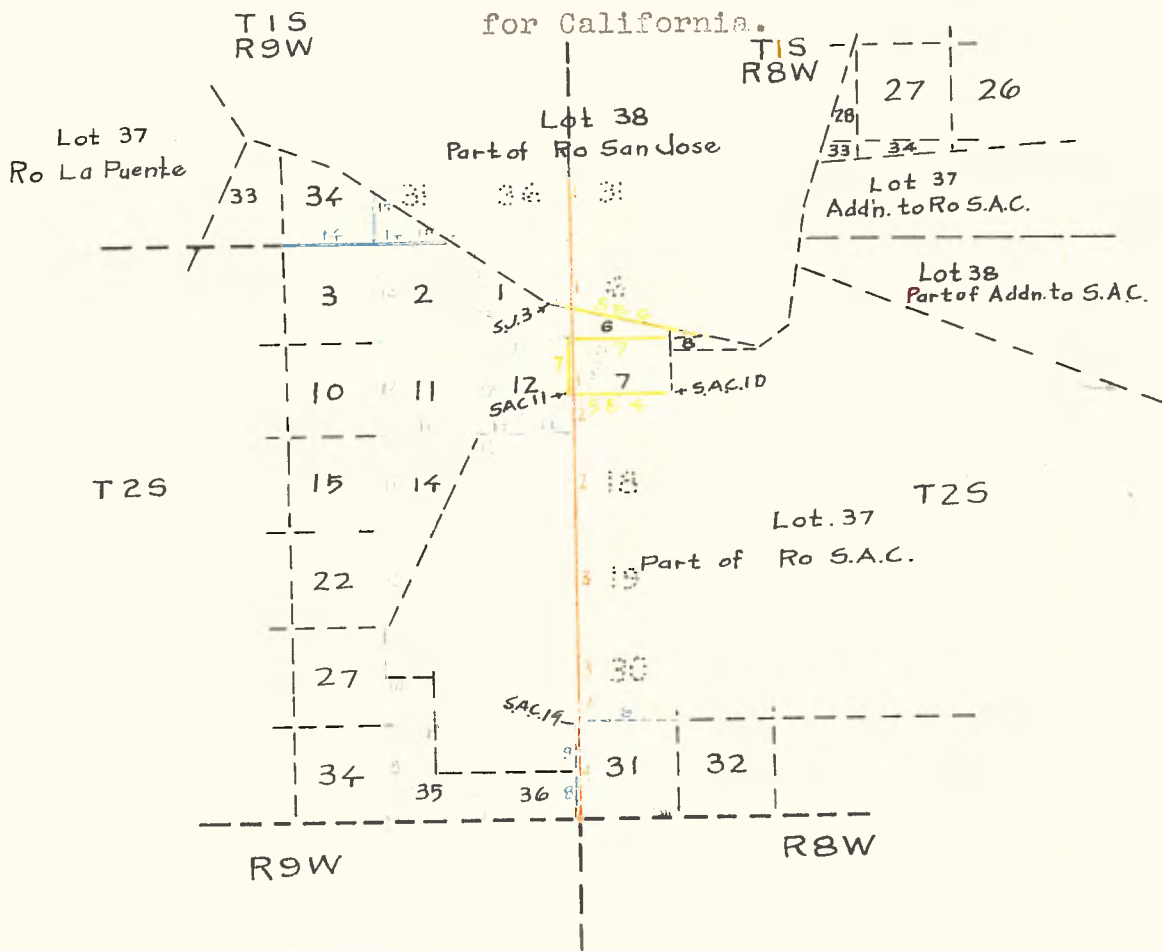
I, John Plover, U. S. Surveyor General for California, do hereby certify that the annexed transcript of field notes of sections 1, 2, 11, 12 and fractional sections 14, 23 and 26, T 2 S., R 9 W., S. B. M. is a true and literal exemplification of the said field notes which are on file in this office.

JOHN PLOVER

(OFFICIAL SEAL)

United States Surveyor General

for California.



NOTE:

RED	=	Henry Hancock	1853
YELLOW	=	John E. Jackson	1882
DOTTED BLUE	=	E. Hadley	1872
GREEN	=	Henry Hancock	1856
BLUE	=	W. P. Reynolds	1875

Part 1)
 Vol. 171)
 Henry Hancock)
 D. S. July 5th,)
 1853.)

W. B. T. 1 S., R. 8 W., S. B. M.

80.00 South on West Boundary of Section 31
 Set Township corner post charred stake in
 mound cor. of Ts. 1 & 2 S., Rs. 8 & 9 W.

W. B. T. 2 S., R. 8 W., S. B. M.

19.60 South on West boundary of section 6
 Top of hill
 22.00 Ravine
 31.75 W slope of ridge from which bears aspring S 46 E.
 40.00 Set $\frac{1}{4}$ sec. post & charred stake in mound from
 which springs bears S 60 $\frac{1}{2}$ ° W.
 42.00 Trail course W.
 45.50 Center of ravine and over small stream of water
 Course N 75° E.
 59.00 Base of hill & trail N. W.
 67.50 Ridge
 72.50 Over ravine
 76.00 " " Course N. W.
 80.00 Set sec. post and charred stake in mound on edge
 of Chaparral Cor. of secs. 6 & 7.
 Soil 1st and 2nd rate & good pasturage.

2.00 South on west boundary of section 7
 N. W. slope of ridge
 4.00 Deep ravine N. W.
 10.00 Slope of ridge
 15.50 Ravine
 23.00 Top of ridge course N 40 E.
 31.50 Center of ravine N 85 E.

W. B. T 2 S., R. 8 W., S. B. M.

36.00 East side of Pinnacle
40.00 Set $\frac{1}{2}$ sec. post and charred stake in mound.
South of head of gulch
45.00 Ridge Course W.
48.00 Head of gulch
52.00 Leave Chimisal and oak.
54.50 Trail N 87 W.
63.50 Ridge
67.50 Ravine making east over inclined table
80.00 Set sec. post and charred stake in mound cor
of secs. 7 and 18.

South on west boundary of section 18

8.00 Rise of land
10.50 Ravine N 48 E.
15.00 Trail on slope W.
20.00 Ravine and little running water from spring course N.
40 E.
22.50 E. slope of ridge.
26.00 Ravine course N 70 E.
31.00 Ridge course N 70 E.
38.50 Ridge course S 80 E.
40.00 Set $\frac{1}{2}$ sec post and charred stake in mound
45.50 Ravine
51.50 Base of hill
63.50 Gulch and small stream Course N 28° E.
65.00 Trail to San Jose Course S 83 W.
70.00 Do Do Do N. 36 E.
78.00 Ridge
80.00 Set sec post and charred stake in mound in flat
ravine cor of secs. 18 and 19
Course of ravine N 36 W.

W. B. T. 2 S., R. 8 W., S. B. M.

Soil 2nd rate and hilly.

South on west boundary of section 19.

5.00	Ridge course N 37 W.
14.00	Ravine
17.50	Ridge East
	Ravine
27.50	Ridge
32.00	Ravine course N 62 E.
40.00	Set $\frac{1}{2}$ sec post and charred stake in mound
45.00	Ridge
51.50	Ravine
53.00	Ridge
55.50	Ravine
57.00	Ridge
59.50	Ravine
62.00	Ridge
67.50	Ridge
78.00	Ravine at base of hill and enter valley. Course of ravine S 56 W.
80.00	Set sec post and charred stake in mound cor to secs. 19 and 30. Soil same as last mile.

South on west boundary of section 30.

29.50	To point of ridge
40.00	Set $\frac{1}{2}$ sec. post and charred stake in mound
43.50	Base of ridge
46.50	Point of same
49.00	Ravine
52.50	Ridge

W. B. T 2 S., R. 8 W., S. B. M.

56.50 Gulch
60.50 To gulch
76.50 " " Course S 20 W.
80.00 Trail from Chino through the hills. Course S. W.
Set sec. post and charred stake in witness mound
50 lks. S of true corner for trail Cor of secs 30
and 31
Soil as last mile

Saturday, September

South on west boundary of Section 31
4.00 Across Arroyo with little water Course S 40 W.
12.00 Across Arroyo 150 lks. wide Course N 60 W.
19.00 Ravine N 33 W.
27.18 Branch ravine
35.50 Westerly slope of ridge
39.70 Sand stone gulch Course S. W.
40.00 Set $\frac{1}{2}$ sec post and charred stake in rock mound;
No trench. pits on N & S.
45.00 Spur
47.25 Gulch S 20 W.
48.25 " S 80° W.
50.00 Ravine S 82° W.
60.00 Leave Chamisal and enter wild oats
72.50 Top of ridge Course E.
80.00 Set Tp. corner post of Ts 2 and 3 Rs 8 and 9 W.
and charred stake in mound.

Boundary Rancho Santa Ana-del Chino
January 26, 1883

Part 15)
Vol. 171) From post station 10 of Rancho Santa Ana
J. E. Jackson)
D. S. 1882) del Chino.

Boundary Rancho Santa Ana del Chino, January 26, 1883.

West Va. $14^{\circ} 45'$ E.

X X X X X X

76.68

Station 11 of Rancho Santa Ana del Chino

Old post and mound gone I set a post Redwood 4 ft. long 4 x 4 ins and marked the same S A C 11 Mound and pits are impracticable

From Station a granite rock 18 x 12 x 14 ins in an old mound and marked 55 and $\frac{1}{2}$ bears north and distant $5 \frac{12}{100}$ chs. and a point in a post and wire fence bears west distant 89 lks. at which latter point I set in the line of wire fence a 5 x 4 ins Redwood post 4 ft. long which I marked W P for a witness for station 11

From the witness post the course of wire fence is $N 21\frac{1}{2}^{\circ} E$ and $S 21\frac{1}{2}^{\circ} W$.

and from said witness post a 6 x 6 ins redwood post 4 ft. long set in the ground in the summit of the ridge marked in the west side in an iron plate Los Angeles County and in the east side on an iron plat San Bernardino County bears $S 21\frac{1}{2}^{\circ} W$ distant $6\frac{1}{2}$ lks. and the corner of post and wire fence in the bottom of gulch bears $N 21\frac{1}{2}^{\circ} E$ distant 5-94 chains

The first half mile over good grazing land the bottom $\frac{1}{2}$ mile rough brushy hills inferior pasture.

Commencing at a Sycamore tree about 20 ins in dia marked S J 5 and standing in a ravine at the foot of the mountain. Course of ravine north-east and being Station No. 3 of Rancho San Jose from which two small springs bears north 2.00 chs. and 2.50 chs. distant and another spring

Boundary Rancho Santa Ana del Chino, January 26, 1883.

bears N 25° W distant about 4 chains

Thence S 79° 45' E

Var. 15° 15' East

Descending spur of hill

- 4.50 West of spur falling north
- Then descend and over open valley
- 21.45 Intersect the line between Ranges 8 and 9 West in Township 2 South 23 chs. north of old mound and pits in the edge of Chaparral the cor. to secs. 6-7-1-12.
- The old intersection post is gone and I set a sandstone rock in the ground 12 ins. and marked on the top with a chisel J. P.
- The rocks ^{is} 14 x 14 x 16 ins. Raised a mound in the south side of rock and five feet dist. three feet at the base and 2 feet high. Dug pits east and west of rock and 5 ft. distant Pits 18 x 18 x 12 ins.
- Continue course across open valley.
- 33.95 Base of hill and ascend
- 36.45 Enter brush
- 46.45 Crest of ridge falling north
- 51.65 Cross ravine course north
- 69.25 Summit Then descend and run in south slope of hill
- 81.45 Cross the crest and along slope falling north
- 107.95 Descending
- 116.45 Base of hill and enter valley
- 116.95 Center of dry Arroyo 50 lks wide 10 ft. deep
- Course 50 $\frac{3}{4}$ ° East
- 121.50 Old road N 51° E S 51° W.
- 133.65 Cross road to Spadia Course S 42° E and N 42° W.

X X X X X X

Boundary Rancho Santa Ana del Chino, January 26, 1883.

January 27, 1883

Beginning at the old mounds and pits cor. to
secs. 6, 7, 1-12 of Tp. 2 S., Range 8 and 9 West
S. B. M. Thence I find the old mound in the
north edge of the Chaparral. I repaired the
mound and set in at a sandstone rock 14 x 8 x 4
ins and cut in the south edge of same five
notches, and in the east edge six notches.

A live oak tree 3 feet in dia stands on the
east bank of small ravine Course N. W. bears N
 $66\frac{1}{2}^{\circ}$ W distant 2.59 chs. I blazed and marked
the tree T 2 S. R 9 W. Sec. 1 B T

Thence east random

Va. $14^{\circ} 45'$ East

Between secs. 6 and 7

x x x x x

Jan. 29th

From rock and mound on range line between the
ranges 8 and 9 west T 2 South the corner to
sections 6 - 7 - 1 - 12

South between sections 7 and 12

Va. $14^{\circ} 45'$ East

Over brushy hills

40.71

Point from which a granite rock in old mound
marked $\frac{1}{4}$ and 5 bears East distant 235 links
Said rock is 18 x 12 x 14 inches and is the $\frac{1}{4}$
section corner between sections 7 and 12.

Land hilly and brushy

The true course to retrace this line is $S 3^{\circ} 18'$
East and the distance is $40^{\circ} 78$ chs.

Finished Jan. 29th, 1883.

T. 2 S., R. 8 W., S. B. M.

John E. Jackson

U. S. Dep. Surveyor,

Jan. 31, 1883.

Part 16
Same Vol.
E. Hadley
1872

The subdivision lines of
Township 2 S., Range 8 West, San Bernardino
Meridian, by Ebenezer Hadley, Deputy Sur-
veyor, under his contract of September 6th,
1882. Survey commenced Sept. 8th, 1872.

West on random line on N. bdy of sec. 31

Var. 14° 45' E.

x x

76.80

To a point 60 lks. N of Station No. 19 of El
Chino Rancho

Set a grey granite stone 2 x 8 x 8 ins at
Station 19

Cor to secs. 31 and 36 on range line Ranges
8 and 9 West from which

a black walnut tree 12 in dia bears N 48° E
2.13 chs. dist.

Land hilly and rolling

Soil 1st rate mostly

x x x x x x x

From the cor. to Tps. 2 and 3 S., Rs. 8 and 9
W. I ran

North on a random line Var. 14° 45' E.

40.00

Set temp. $\frac{1}{4}$ sec. cor on the S slope of a low
ridge

Up to this point the land slopes N and is covered
mostly with a thick growth of Chaparral

Scattering oak timber in the shallow ravines

T. 2 S., R. 8 W., S. B. M.

80.00 Intersected cor to secs. 30 and 31, 25 lks E
of cor
Last 40.00 chs. low rolling hills, mostly 1st
rate soil
S 11' E on a true line

Va 14° 45' E.

40.00 Set a post in mound of stone for $\frac{1}{4}$ sec. cor
80.00 Cor to secs. 36 and 31 Tps. 2 and 3 S., Rs. 8
and 9 West

Part 16
Vol. 240

A Transcript of the field notes of the survey
of Township 2 South, Range 9 West, of San
Bernardino Meridian, California.

North between sections 35 and 36

Variation 13° 25' East

40.00 Set quarter section post in mound with trench
and pits as per instructions on the south boundary
line of rancho "Santa Ana del Chino 40chs. East
of S. W. corner of said Rancho
Land hilly
Soil second rate

North between sections 34 and 35

Variation 13° 25' East

40.00 Set quarter section post in mound with trench and
pits as per instructions
80.00 Set post for corner to sections 26, 27, 34 and 35
in mound with trench and pits as per instructions
on south bluff of Canada la Brea
Land broken and hilly
Soil second rate

T. 2 S., R. 8 W., S. B. M.

East between sections 26 and 35

Variation 13° 25' East

40.00 Set quarter section post in mound with trench
and pits as per instructions on west boundary
of rancho Santa Ana del Chino" 40 chs. north of
S. W. corner of same.
Land hilly. Soil second rate.

North between sections 26 and 27

Variation 13° 25' East

28.00 Across Canadala Brea 2 chs. wide course S. W.
40.00 Set a sandstone rock 10 ins. long 6 in. wide and
5 in thick for quarter section corner
80.00 Set a rock 18 x 10 x 6 in for corner to sections
22, 23, 26 and 27 on west boundary of "Santa Ana
del Chino" rancho
Land hilly
Soil second rate

North between sections 22 and 23

Variation 13° 25' East

40.00 Set a sandstone rock 18 x 16 x 5 for quarter
section corner marked same as per instructions
80.00 Set post for corner to sections 14, 15, 22 and
23 in mound with trench and pits as per instructions
Land rolling. Soil second rate.

East between sections 14 and 23

Variation 13° 25' East

40.00 Intersect boundary of Rancho "Santa Ana del Chino"
and set a rock 24 x 24 x 4 for quarter section corner.

T. 2 S., R. 8 W., S. B. M.

North between sections 14 and 15

Variation 13° 25' East

40.00 Set quarter section post in mound with trench
and pits as per instructions

80.00 Set post in mound with trench and pits as per
instructions for corner to sections 10, 11, 14
and 15

Land hilly

Soil second rate

East on random between sections 11 and 14

Variation 13° 25' East

40.00 Set a rock for temporary quarter section corner

80.60 Intersect N and S line 18 links north of corner
to sections 11, 12, 13 and 14 at a corner of
rancho Santa Ana del Chino"

from which I run
west on true line between sections 11 and 14

Variation 13° 17' East

40.40 Set a gray sandstone rock 17 x 6 x 5 for quarter
section corner

80.60 To corner to sections 10, 11, 14 and 15

Land hilly

Soil second rate

East on random between sections 12 and 13

Variation 13° 25' East

40.00 Set rock for temporary quarter section corner.

80.00 Intersect east boundary of township at corner to
sections 7, 12, 13 and 18 from which I run
West on true line between sections 12 and 13
and on north boundary of "Rancho Santa Ana del Chino".

T. 2 S., R. 8 W., S. R. M.

Variation 13° 25' East

40.00 Set a granite rock 16 x 8 x 6 for quarter section
corner
80.00 To corner to sections 11, 12, 13 and 14
Land broken and rocky
Soil second rate.

North between sections 11 and 12

Variation 13° 25' East

40.00 Set a rock 14 x 7 x 6 for quarter section corner
80.00 Set post for corner to sections 1, 2, 11 and 12
in mound with trench and pits as per instructions
Land hilly
Soil second rate

East on random between sections 1 and 12

Variation 13° 25' East

40.00 Set a rock for temporary quarter section corner
80.00 Intersect east boundary of township at post corner
to sections 1, 6, 7 and 12
West on true line between sections 1 and 12

Variation 13 $\frac{1}{2}$ ° 25' East

40.00 Set granite rock 16 x 6 x 5 for quarter section
corner
80.00 To corner to sections 1, 2, 11 and 12.
Land hilly
Soil second rate.

North on random between sections 1 and 2

Variation 13° 25' East

40.00 Set temporary quarter section post.

R. 2 S., R. 8 W., S. 3. M.

80.00 To corner to sections 1, 2, 35 and 36 from which
I run south on true line between sections 1 and 2.

Variation 13° 25' East.

40.00 Set quarter section post in mound with trench
and pits as per instructions

80.00 To corner to sections 1, 2, 11 and 12.

Land hilly

Soil second rate.

North between sections 10 and 11

Variation 13° 25' East

40.00 Set quarter section post in mound with trench and
pits as per instructions

80.00 Set post for corner to sections 2, 3, 10 and 11 in
mound with trench and pits as per instructions

Land undulating Soil second rate.

East on random line between sections 2 and 11

Variation 13° 25' East

40.00 Set temporary quarter section post

80.00 Intersect N and S line at corner to sections 1,
2, 11 and 12 from which I run

West in true line between sections 2 and 11

Variation 13° 25' East

40.00 Set quarter section post in mound with trench
and pits as per instructions

80.00 To corner to sections 2, 3, 10 and 11

Land undulating

Soil second rate

North on random between sections 2 and 3

T. 2 S., R. 8 W., S. E. M.

Variation 13° 25' East

40.00 Set temporary quarter section post
80.00 Intersect N boundary of township at corner to
sections 2, 3, 34 and 35
From which corner I run
South on true line between sections 2 and 3

Variation 13° 25' East

40.00 Set quarter section post in mound with trench
and pits as per instructions
80.00 To corner to sections 2, 3, 10 and 11
Land undulating
Soil second rate

Henry Hanceck Deputy Surveyor
Contract dated Feb. 7, 1856

Part 39
Vol. 300

T. 1 S., R. 9 W., S. E. M.

East on south boundary of section 34

Variation 14° 35' E.

x x

80.00 To mound of earth and rock, the established
corner to sections 34, 35, 2 and 3.

East on the south boundary of section 35.

Variation 14° 35' E.

40.00 To the mound of earth at the established quarter
section corner
63.00 East brow of hill N and S and descend
67.00 Foot of hill
68.15 To a post in a mound of earth and rock, at the
intesection of the official surveyor of Rancho
San Jose, finally confirmed to Henry Dalton, et al.,

T. 1 S., R. 9 W., S. B. M.

bearing N 53° W. and S 53° E.

Set a sycamore post 4 feet long and 2 x 2 in and
12 in deep for corner to fractional sections
2 and 35

From the corner to sections 34, 35, 2 and 3 I
run north between sections 34 and 35

Variation 13° 35' E

11.00

Over rolling hills to a point from which the
house of Santiago Sobe bears west about 20
chains dist.

40.00

Set a sycamore post 4 feet long and 4 x 4 in
and 1 foot deep in a mound of rock for quarter
section corner.

51.65

Intersect line of the official survey of
Rancho San Jose and set a redwood post 4 feet
long 4 x 4 in and 18 ins deep and raise a mound
of rock for corner to fractional sections 33 and
34 from which the corner to fractional sections
35 and 2 bears S 53° E. 85.34 chains. dist.
Land rolling, grassy hills.
Soil first rate.

Wm. P. Reynolds Deputy Surveyor

Under his contract of March 31st, 1875.