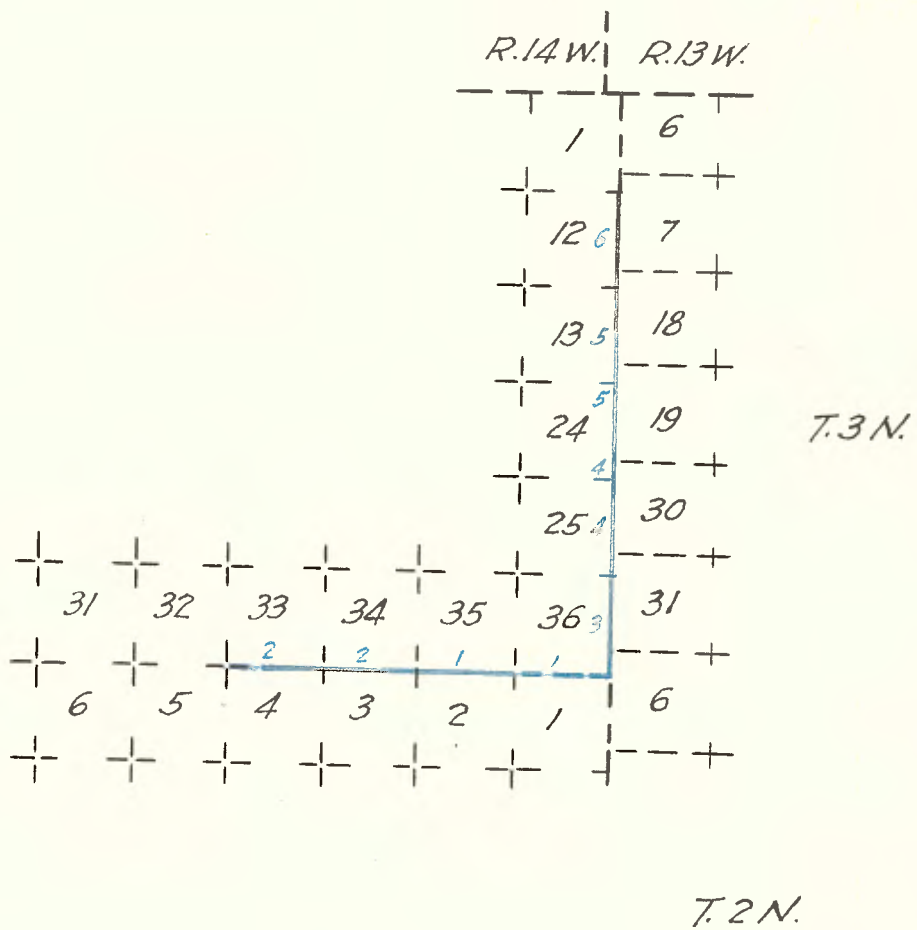


Copied from Photographic Copies
furnished by
U.S. General Land Office
WASHINGTON, D.C.



277684
 2640
 138074
 21

Part of NORTH EDY. Tp.2 N., R.14 W., S.B.M.

I begin the survey of the North bdry. of Tp. at iron post S.G.F.R.No.33 which is also the cor. of secs. 4 and 5. May 2, At 8 h. 0 m. a.m., 1 m.t., I set off 34° 18' on the lat. arc, 15° 14' N. on the decl. arc, and determine a true meridian with solar at the above described cor. and I run Thence,

East on blank line along North bdy. of Tp. At intersection with range line on E. bdy. of Tp. I establish cor. to Tps. 2 and 3 N., Range 14 W.

Set a post 3 ft. long 3 ins. sq. in a rock mound 4 ft. base, 2 ft. high, marked

C C R 14 W on W.

T 2 N. S 1 on S.

T 3 N S 36 on N faces, with 6 grooves on N.S. and W. faces, raise a mound of rocks 4 ft. base, 2 ft. high W. of cor. from which cor. to Tps. 2 and 3 N., R 13 W. bears North 17.49 chs. dist.

Pits impracticable. Thence, I run,

West on true line bet. secs. 1 and 36.

Ascend steep rocky side of high mountain.

40.00 Set rock 20x10x8 ins. 15 ins. in ground for 1/4 sec. cor. marked 1/4 on N. face, raise a mound of rocks 3 ft. base, 2 ft. high N. of cor. Pits impracticable.

48.00 Top of spur 1500 feet above Tp. cor. descending S.

Thence, along southerly slope of mountain, cut with deep canyons.

80.00 Set a rock 16x10x6 ins. 10 ins. in ground for the cor. to secs. 1, 2, 35 and 36, marked with 5 notches on W. and 1 notch on E. edges, raise a mound of rocks 4 ft. base, 2 ft. high W. of cor. Pits impracticable.

Land mountainous.

Soil, rocky.

Mountainous land, 80.00 chs.

West on true line bet. secs. 2 and 35.

5.00 Top of ridge, course N. and S.

5.00 Bottom of canyon 300 ft. below ridge, course S.

36.00 Spur descending S.

40.00 A manzanita tree 8 ins. in diam. for 1/4 sec. cor. I mark 1/4 S. 35 on N. side and raise a mound of rocks around tree. Pits impracticable. Continue along S. slope of mountain.

80.00 Set a rock 24x8x6 ins. 18 ins. in ground for cor. to secs. 34 and 35, marked with 2 notches on E. and 4 notches on W edges, from which a boulder 4x2 ft., 3 ft. above ground bears N. 30° W. 90 lks. dist. marked

T 3 N R 14 W S 34 B R.

A boulder 5 ft. x 1 1/2 ft. 1 ft. above ground bears

N 82 1/4° E. 15 lks. dist., marked

17.49 ch
104.97
103.33
1154.34
103026
124.08

Not Copied

Survey commenced May 12, 1902, and executed with a W. & L. E. Curley light mountain transit with solar attachment.

I examine the adjustment of the transit and find it correct.

At my camp near the S.E. cor. of the Tp. lat. $34^{\circ}18'$ N. longitude $118^{\circ}18'$ W. I set off $34^{\circ}18'$ on lat. arc, and $18^{\circ}5'$ N. on decl. arc, and 3 h 0 m p.m., 1 m.t., determine a true meridian with the solar and mark a point thereof on a plug driven firmly in the ground 5.00 chs. N. of my station.

At the same place and on the same evening I take an observation on Polaris in accordance with the instruction given in the Manual.

L.m.t. of observation May 12, -----	8 h. 45m.
" " " " U.C. of Polaris " "	<u>22</u> <u>05</u>

Hour angle of Polaris 10 h. 40 m.

Azimuth of Polaris $0^{\circ} 28''$

May 13, At 7 h. 0 m. a.m., I lay off the azimuth of Polaris to the east and find that the meridian thus determined co-incides with the meridian determined yesterday with the solar. I find the magnetic bearing of the true meridian to be $N 15^{\circ}12' W.$ which reduced by table on page 100 of the Manual gives a mean magnetic declination of $15^{\circ}10' E.$

T 3 N - R 14 W.

May 13, At 8 h. 0 m. a.m., 1 m.t. I set off $34^{\circ}18'$ on the lat. arc, $18^{\circ}16' N.$ on the decl. arc, and determine a true meridian with the solar at the S.E. cor. of the Tp. a post as previously described—Thence, I run

North on true line on E. bdry. of sec. 36.

Ascend steep rough mountain.

14.50 Spur descending S.E. 300 ft. above Tp. cor.

17.49 Cor. to Tps. 2 and 3 N., R. 13W.

24.25 Bank of deep chasm.

30.00 Across chasm. The $\frac{1}{2}$ sec. cor. will fall on steep canyon side a place unsuitable for a cor.—therefore at this point I mark a rock in place 3 ft. sq., 4 ft. above ground W.C. $\frac{1}{2}$ on W. face; raise a mound of rocks 3 ft. base, 2 ft. high W. of cor. Pits impracticable. Descend steep side of canyon 200 ft. deep.

42.50 Across canyon, course E.

80.00 Point for cor. to secs. 25 and 36 falls on steep canyon's side a place unsuitable for cor.

Land, mountainous and cut with deep canyons.

No soil or timber

Mountainous land 80.00 chs.

May 13, 1902.

This day I dispense with the services of Lucius D. West and Ferdinand F. West, as chainmen on this line.

North, on true line on E. bdy. of sec.25.
Ascend through brush.

- 5.00 Ridge descending E. Set a rock 18 x 10 x 6 ins. 12 ins. in ground for witness cor. to cor. to secs. 25 and 36, marked W.C. on N.E. face with 1 notch on S. and 5 notches on N. edges, raise a mound of rocks 2 ft. base 1½ ft. high W. of cor. Pits impracticable.
- 21.00 Top of high ridge, course E. and W. Descend.
- 31.50 Edge of deep sandstone wash and as the place for ¼ sec. cor. will fall on the side of this wash, a place unsuitable for cor.
- I set a rock 14 x 10 x 8 ins. 10 ins. in ground for witness cor. to ¼ sec. cor. marked W.C. ¼ on W. face; raise a mound of rocks 2 ft. base, 1½ ft. high W. of cor.
- Pits impracticable.
- 66.20 Across wash, top of spur descending E.
- 72.00 Edge of sandstone cliff overlooking deep sandstone wash, course E.
- 80.00 Point for cor. to secs. 24 and 25 falls in wash, a place unsuitable for cor. I raise a small mound of rocks without marks on sandstone shelf at place for cor. and will set witness cor. further north.
- Land, mountainous.
- No soil.
- Mountainous land, 80.00 chs.

June 6, At 8 h. 0 m. a.m., l.m.t., I set off 34° 20' on lat. arc, and 22° 57' N. on decl. arc, and determine a true meridian with the solar on range line 2.00 chs. N. of place for cor. to secs. 24 and 25, from which point, I run North on true line on E. bdy. of sec. 24.

From point for cor. ascend sandstone cliff.

- 2.00 Set a rock 14 x 8 x 6 ins. 10 ins. in ground for witness cor. for cor. to secs. 24 and 25, marked W.C. on N.E. face with 4 notches on N. and 2 notches on S. edges; raise a mound of rocks 2 ft. base 1½ ft. high W. of cor.
- Pits impracticable.
- This cor. is on summit of divide bet. Tufunga Creek and Gold Creek.
- Descend through brush.
- 21.00 Spur descending W.
- 31.00 Canyon 30 lks. wide, course W.
- 40.00 Set an oak post 3 ft. long 3 ins. sq., 24 ins. in ground for ¼ sec. cor. marked ¼ S. 24 on W. face, dig pits 18 x 18 x 12 ins. on line N. and S. of post 3 ft. dist. raise a mound of earth and rocks 4 ft. base 1½ ft. high W. of cor.

EAST EDY. OF T. 3 N., R 14 W., S.B.M.

- 50.00 Canyon, course S.W.
- 58.00 Spur descending S.W.
- 64.00 Canyon 20 lks. wide, course S.W.
- 74.00 Gold Creek in timbered ravine 500 lks.wide, course S.W. 1000 ft. below divide; water in pools.
- 80.00 Set a rock 18x18x12 ins. 12 ins. in ground for cor. to sees. 13 and 24 marked with 3 notches on N. and S. edges; raise a mound of rocks 4 ft. base, 2 ft. high W. of cor.

Pits impracticable.

Land, mountainous.

Soil, rock.

Heavy brush on hills and scattering oak and sycamore along Gold Creek.

Mountainous land, 80.00 chs.



North on true line on E. bdy. of sec. 13.

Ascend rough mountain.

- 40.00 Set a rock 12 x 12x 6 ins. 8 ins. in ground for $\frac{1}{4}$ sec. cor. marked $\frac{1}{4}$ on W. face; raise a mound of rocks 3 ft. base, 2 ft. high W. of cor. Pits impracticable.

This cor. is on E. side of top of ridge running N. & S.

Continue to ascend mountain.

- 80.00 A white oak tree 10 ins. in diam. for cor. to sees. 12 and 13, I mark T 3 N S 13 on S W

X
 R 14 W S 12 on N.W. sides; with 2 notches on N. and 4 notches on S. sides; from which
 A live oak 10 ins. in diam. bears N.45° W. 5 lks. dist., marked T 3 N R 14 W S 12 B T; raise a mound of rocks around tree.

This cor. is near the junction of a prominent spur with the summit of mountain 1 ch. E. of spur, course N. and S. and 2 chs. S. of summit.

Land, mountainous.

Soil, rocky.

No timber

Mountainous land, 80.00 chs..



EAST BDY. T 3 N., R 14 W., S.B.M.

North, on true line on E. bdy. of sec. 12. Ascend.

- 2.00 Summit of mountain 2500 ft. above Gold Creek and dividing water shed of that Creek from Pacoima Creek, course E. & W.
Descend through brush.
- 40.00 Point for $\frac{1}{4}$ sec. cor. falls on rough ground unsuitable for a cor. I proceed along line.
- 50.00 Set a rock 20 x 16 x 8 ins. 15 ins. in ground for witness cor. to $\frac{1}{4}$ sec. cor. marked W.C. $\frac{1}{4}$ on W.face; raise a mound of rocks 4 ft.base, 2 ft.high W. of cor.
Pits impracticable.
- 58.00 Pacoima Creek in ravine 300 lks. wide, 2500 feet below summit of mountain. Water in pools. Ascend.
- 69.00 Top of spur descending S.W. Descend along W.side of spur.
- 80.00 A sycamore 20 ins.in diam.for cor.to secs. 1 and 12, I mark

T 3 N E 12 on S.W.

R 14 S 1 on N.W.sides, with 1 notch on N. and 5 notches on S.sides from which a sycamore 8 ins. in diam. N.84°W. 52 lks. dist. marked

T 3 N R 14 W S 1 B T.

A sycamore 8 ins. in diam. bears S 31°W. 68 lks. dist. marked T 3 N R 14 W S 12 B T.

This cor. is near bottom of canyon about 20.00 chs.N.E. from its intersection with Pacoima Creek.

Land, mountainous.

Soil, rocky.

Scattering oak timber and heavy brush.

Mountainous land 80.00 chs.

NOTE: The land north of this point including the whole of the N. tier of sections of the Tp. lies on a rough un-surveyable mountain 5000 ft.high. There is no agricultural land and no settlers in this area; the surface is without soil being covered with rocks and sandstone washes, I shall therefore discontinue the line at this point and shall omit the N. tier of sections from my survey of the Tp.

June 7, 1902.