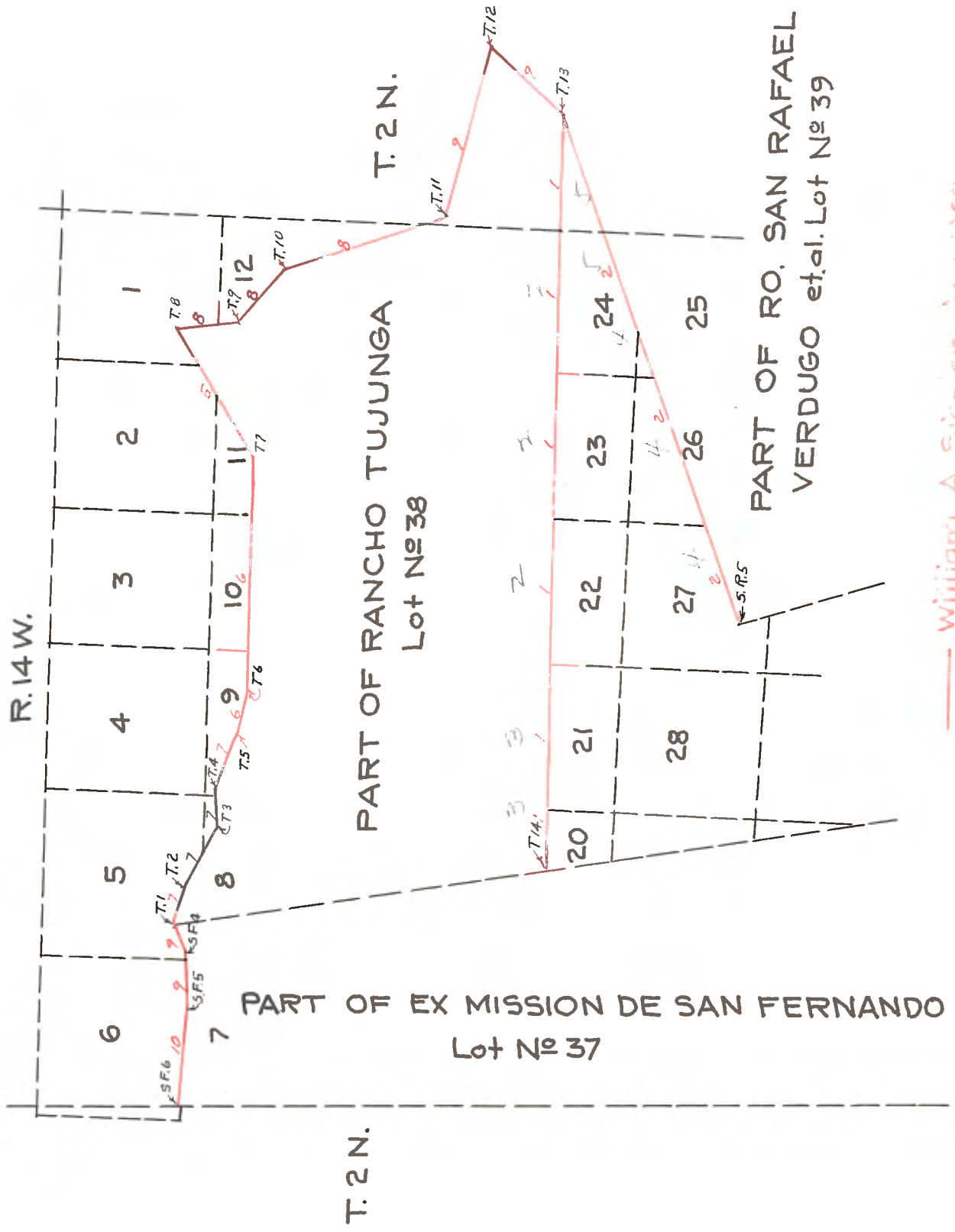


COPIED FROM PHOTOGRAPHIC COPIES
FURNISHED BY
U. S. GENERAL LAND OFFICE
WASHINGTON, D.C.



— William A. Sienner April 1902

RESURVEY OF RANCH BDRYS. TP. 2 N., R. 14 W., S. B. M.

Survey commenced April 3, 1902, and executed with a W. and L. E. Gurley light mountain transit with solar attachment.

The horizontal limb being provided with two opposite verniers reading to 30" of arc. The instrument was examined and tested by the official examiner at San Francisco, May 30, 1901.

April 3, 1902, to test the solar apparatus by comparison with an observation on Polaris, I proceed as follows:

As near the intersection of range line with southerly bdy. of Rancho Tujunga as I could determine on E. bdy. of sec. 24 in latitude $34^{\circ} 15'$ N., longitude $118^{\circ} 18'$ W. I set off $34^{\circ} 15'$ on lat. arc and $5^{\circ} 16'$ N. on decl. arc and at 4h. 0m. p.m., l.m.t., I determine with the solar a true meridian and mark a point thereof on a plug driven firmly in the ground 5.00 chs. N. of my station.

April 4, at 0h. 36m. a.m., l.m.t., I observe Polaris at lower culmination in accordance with instructions in the Manual and find the meridian thus determined coincides with the meridian as determined with the solar yesterday.

At 8h. 0m. a.m., the magnetic bearing of the true meridian is N. $15^{\circ} 23'$ W. which reduced by the table page 100 of the Manual gives the mean magnetic decl. $15^{\circ} 20'$ E.

As it will be necessary for me to close my survey on the bdy. lines of the Rancho Tujunga, San Rafael and San Fernando and as no intermediate corners or stations were established on those bdrys, and but few of the original corners are standing, I shall proceed to re-survey as much of those bdrys. as shall be necessary to close my surveys.

I commence at cor. No. 13 of Rancho Tujunga. The live oak and bearing trees have disappeared but I am told by an old resident that the cor. as it now stands has been there for many years and its location has been checked upon by surveys from other known corners and has been confirmed by the courts. It is a redwood post 4 ins. sq. 1 ft. above ground marked T 13 on W. face L C I on E. face, set in a mound of earth and rock 6 ft. base, $1\frac{1}{2}$ ft. high from which a live oak 30 ins. in diam. bears N. 75° W. 159 lks. dist. marked T. 13 W. C.

April 4, I set off $34^{\circ} 15'$ on lat. arc, and $5^{\circ} 31'$ N. on decl. arc and at 8h. 0m. A.M., l.m.t., I determine a true meridian with the solar at this cor. from which I run S. 89° W. on random line along S. bdy. of Rancho Tujunga, setting temp. stations at each 40 and 80 chs.

415.00 A point 7.25 chs. N. of cor. No. 14 which is a redwood post 4 ins. sq. 1 ft. above ground marked as described by the surveyor general.

In order that my stations may appear in consecutive order, I return to cor. No. 13 and run

S. 88° W. on true line.

Over a succession of very steep spurs and ridges of Tujunga mountain and through brush.

40.00 Set rock 20 x 12 x 12 ins. 14 ins. in the ground marked T $\frac{1}{2}$ M on N. face, raise a mound of rocks 3 ft. base, 2 ft. high N. of rock. Pits impracticable.

RESURVEY OF RANCH BDRYS. TP. 2 N., R. 14 W., S. 8. N.

60.00 Wood road course N.E. and S.W.

80.00 Set a rock 12 x 8 x 6 ins. 8 ins. in ground marked T 1 M on N and S 24 on S faces; raise a mound of rocks 2 ft. base 1½ ft. high N. of rock.

Land mountainous.

Soil 4th rate.

No timber.

Mountainous land, 80.00 chs.

RESURVEY OF RANCHO BDRYS. T. 2 N., Rgs. 13 & 14 W., S. 8. N.

120.00 Set a rock 20 x 12 x 8 ins. 14 ins. in the ground marked T ½ M on N. face; dig pits 18x18x12 ins. on line each side 3 ft. from rock; raise a mound of earth and rock 3 ft. base 1½ ft. base, 1½ ft. high N. of cor.

122.50 Through saddle 800 ft. above Valley and cross to S. side of mountain and along southerly slope.

Land becomes more broken.

160.00 Set a rock 24 x 16 x 5 ins. 18 ins. in ground marked T 2 M on N. S 23 on S faces; raise a mound of rocks 2 ft. base, 1½ ft. high N. of cor.

Pits impracticable.

Land mountainous.

No soil or timber.

Mountainous land, 80.00 chs.

200.00 Set a rock 20 x 10 x 8 ins. 14 ins. in ground marked T ½ M on N. face; dig pits 18 x 18 x 12 ins. on line each side of rock 3 ft. dist.; raise a mound of rocks 2 ft. base, 1½ ft. high N. of cor.

240.00 Top of spur descending S. about 700 ft. above valley.

Set a rock 20 x 12 x 8 ins. 14 ins. in ground marked T 3 M on N. and S. 22 on S. faces; raise a mound of rocks 2 ft. base, 1½ ft. high N. of cor.

Land mountainous.

Soil rocky.

Mountainous land 80.00 chs.

272.00 Cross highest ridge on line 1000 ft. above valley, course N.E. and S.W.

280.00 Set a rock 20 x 12 x 8 ins. 14 ins. in ground marked T ½ M on N. face; dig pits 18 x 18 x 12 ins. on line each side of rock 3 ft. dist. raise a mound of rock 3½ ft. base, 1½ ft. high N. of cor. This cor. is on side of mountain facing N.

291.50 Deep canyon 50 lks. wide, course S.W. 100 ft. above valley.

315.00 Through low saddle 500 ft. above valley to north side of range.

REBURY OF RANCHO BDYS. T. 2 N., Rgs. 13 & 14 W., S.B.M.

320.00 Set a rock 18 x 12 x 10 ins. 12 ins. in ground marked T 4 M on N. S 21 on S faces; dig pits 18 x 18 x 12 ins. on line each side of rock 3 ft. dist.; raise a mound of earth $3\frac{1}{2}$ ft. base, $1\frac{1}{2}$ ft. high N. of cor.

Land mountainous.

Soil rocky.

No timber.

Mountainous land, 80.00 chs.

360.00 Set a rock 16 x 10 x 8 ins. 11 ins. in ground marked T $\frac{1}{2}$ M on N. face; dig pits 18x18x12 ins. on line each side of rock 3 ft. dist.; raise a mound of rock $3\frac{1}{2}$ ft. base, $1\frac{1}{2}$ ft. high N. of cor.

386.00 Top of Peak 300 ft. above valley.

400.00 Set a redwood post 3 ft. long 4 ins. sq., 24 ins. in ground, marked T 5 M on N. S 20 on S. faces; raise a mound of rocks 2 ft. base, $1\frac{1}{2}$ ft. high N. of cor. Pits impracticable.

Land mountainous.

Soil rocky.

No timber.

Mountainous land, 80.00 chs.

411.00 Road to Tujunga course N. and S. in low pass.

415.19 Cor. No. 14 Rancho Tujunga.

Land mountainous.

Soil rocky.

Mountainous land, 15.00 chs.

NORTH BDY. RANCHO SAN RAFAEL

Commencing at cor. No. 13 of Rancho Tujunga, which is cor. No. 1, Rancho San Rafael, I run S. 68° W. on blank line on N. bdry. of Rancho San Rafael to cor. No. 5, and find that to be the correct course, I then run from cor. No. 5 on true line.

April 9: At 8h. On. a.m., l.m.t., I set off 34° 14' on the lat. arc, 7° 25' N. on the decl. arc and determine a true meridian at cor. No. 5 Rancho San Rafael, which is a mound of rocks on a sharp red peak. The post had disappeared and I set a rock 18 x 18 x 6 ins. 12 ins. in ground, marked S. R. No. 5, 1 ft. N. of mound.-- Thence I run N. 68° E. on true line on N. bdry of Rancho San Rafael, over sharp ridges and through brush.

RESURVEY OF RANCHO BDY. SAN RAFAEL, T.2 N., R.14 W., S.B.M.

- 35.00 Ridge course N.E. and S.W.
- 40.00 Set a rock 20x12x8 ins. 14 ins. in ground, marked S.R. $\frac{1}{2}$ M on S. face; raise a mound of rocks 3 ft. base, 2 ft. high S. of cor. Pits impracticable.
- In head of deep canyon, course N.
Ascend steep side of ridge.
- 46.00 Top of ridge, course N.E. and S.W.
- 52.00 Canyon 100 ft. deep, course N.E.
- 57.00 Top of high ridge 100 ft. above canyon.
- 64.00 Cross ravine 25 lks. wide, course N. Water in pools.
Ascend through dense brush.
- 70.00 Top of spur descending N.
- 78.00 Cross timbered ravine 50 lks. wide, course N.
- 80.00 Set a rock 19x8x4 ins. 13 ins. in ground marked S R 1 M. on S. S. 26 on N. faces, raise a mound of rocks 3 ft. base, 2 ft. high S. of cor. Pits impracticable.
- This cor. is on S. slope of steep mountain.
Land mountainous and out with deep canyons.
Soil 4th rate.
Oak timber along ravines.
Mountainous land 80.00 chs.
-
- 94.00 Top of high ridge 1000 feet above valley; course N.W. and S.E. Descend through dense brush over ridges and canyons.
- 120.00 Set a rock 18 x 12 x 10 ins. 12 ins. in the ground, marked S R $\frac{1}{2}$ M on S. face; from which a live oak 6 ins. in diam. bears S. 60° E. 35 lks. dist., marked S R $\frac{1}{2}$ M B T, raise a mound of rocks 2 ft. base, 1 $\frac{1}{2}$ ft. high S. of cor.
- 132.50 Creek in canyon 50 lks. wide, water in pools e. N.
- 155.00 Ravine 60 lks. wide, course N.W. dividing the Verdugo Mountains from Tujunga Mountains. Water in pools, ascend through dense brush along southerly slope.
- 160.00 Set a rock 20x12x8 ins. 14 ins. in ground marked S R 2 M on S. and S 25 on N. faces, from which a sycamore 8 ins. diam. bears N. 86° W. 47 lks. dist. marked
S R 2 M B T
A sycamore 6 ins. in diam. bears S. 3° E. 60 lks. dist., marked S R 2 M. B T
- 163.00 Same ravine 100 lks. wide, course S.W.
- 167.50 Same ravine, course N.W.
- 175.25 Top of ridge 200 ft. above ravine, course E. & W.

RESURVEY N. BDY. RANCHO SAN RAFAEL, T.2 N., R.14 W., S.B.M.

- 150.00 North branch of same ravine, course S. W. and ascend through dense brush.
- 200.00 Set a rock 15 x 10 x 6 ins. 12 ins. in ground, marked S R $\frac{1}{2}$ M on S. face; dig pits 15x15x12 ins. on line each side 3 ft. from rock; raise a mound of earth and rock $3\frac{1}{2}$ ft. base $1\frac{1}{2}$ ft. high S. of cor. Still ascending along slope of Tujunga Mountain.
- 240.00 A boulder 2 ft. sq. 1 ft. above ground for 3d mile, I mark S R $\frac{3}{4}$ M on S. and S 19 on N. faces, raise a mound of rocks 2 ft. base, $1\frac{1}{2}$ ft. high S. of cor.
- Pits impracticable.
Land, mountainous.
Soil rocky.
Dense brush.
Mountainous land, 160.00 chs.
-
- 270.00 Summit of Tujunga Mountain, course S.E. and N.W.
- 280.00 Set a rock 12x6x6 ins. 8 ins. in ground marked S R $\frac{1}{2}$ M on S. face; raise a mound of rocks 3 ft. base, $1\frac{1}{2}$ ft. high S. of cor. Pits impracticable.
- 302.90 Cor. No. 13 Tujunga Cor. No. 1, Rancho La Canada and Cor. No. 1, Rancho San Rafael.
Land mountainous.
Soil rocky.
Mountainous land, 62.90 chs.

April 11, 1902.

RESURVEY N. BDY. RANCHO TUJUNGA T.2 N., R.14 W., S.B.M.

I am unable to find any of the cors. of the original survey of the Ranch Tujunga bet. cors. No. 1 and No. 13, By instruction from the surveyor general I shall follow the lines as fixed by the decision of Judge Ross in the U. S. Circuit Court for the Southern District of California, which is now the governing line separating the settlers from the Grant and is at the present time so recognized by the settlers.

April 23: At 8h. 0m. a.m., l.m.t., I set off 34° 17' on the lat. arc and 12° 23' N. on the decl. arc and with the solar determine a true meridian at the established closing cor. bet. secs. 2 and 11, which is also cor. No. 30 of San Gabriel Forest Reserve, and is marked and witnessed as described by the surveyor general - Thence, I run S 57° W. on random line along bdy. of Rancho Tujunga.

- 44.00 To a point 52 lks. S. 33° E. of cor. No. 7 which is a redwood post 4 ins. sq. set firmly in the ground marked T 7 on S face, and to further describe this cor. I add the following witnesses:

A live oak 16 ins. in diam. bears N. 46° W. 94 lks.
dist. marked T 2 N R 14 W T 7 B T.

A sycamore 6 ins. in diam. bears S. 72° W. 92 lks.
dist. marked T 2 N R 14 W T 7 B T.

Thence I run

RESURVEY N. BDY. RANCHO TUJUNGA. T.2 N., R.14 W., S.E.M.

N. 57° 41' E. on true line.

32.00 Top of bluff 100 ft. high.

35.00 Gulch, course S.

36.00 Road, course N. E.

44.00 Cor. No. 30 San Gabriel Forest Reserve.
Land mountainous.
Soil 3d rate.
Mountainous land 44 chs.

West on random line along N. bdy. of Rancho Tujunga from cor.
No. 7.

135.20 A point 11½ lks. South of cor. No. 6.
A redwood post 4 ins. sq. set firmly in the
ground, marked T 6 on S. face. Pits on lines
each side of post 3 ft. dist. - Thence I run
S. 89° 30' E. on true line along base of hill and wire
fence.

15.20 Which is 120.00 chs. from cor. No. 7. Set a rock 18x14x8
ins. 12 ins. in ground, marked T ½ M on S face; dig pits
18x18x12 ins. on line on each side of rock, 3 ft. dist.
raise a mound of rocks and earth 4 ft. base 1½ ft. high S.
of cor.

34.00 Leave wire fence and enter broken hills.

55.20 Which is 80.00 chs. from Cor. No. 7.

Set redwood post 3 ft. long, 4 ins. sq., set 24 ins. in ground
marked T 1 M on S. face, S 10 on N face, dig pits 18x18x12 ins.
on line on each side of post 3 ft. dist.; raise a mound of rocks
3 ft. base, 2 ft. high S. of cor.

95.20 Which is 40.00 chs. from cor. No. 7. Set a rock 18x14x8 ins.
12 ins. in the ground marked T ½ M on S face; raise a mound
of rocks 3½ ft. base, 2 ft. high S. of cor.

135.20 Cor. No. 7.

Land, mountainous.
Soil, 3d rate.
Mountainous land, 135.20 chs.

April 23, 1902.

April 24: At 8h. 0m. a.m., l.m.t., I set off 34° 17' on
lat. arc 12° 43' N. on the decl. arc, and determine a true
meridian with the solar at the cor. No. 6, Rancho Tujunga -
Thence, I run N. 76° 30' W. on random line along ranch bdy.

20.00 A point 20 lks. S. 13° 30' W. of post No. 5.
A redwood post 4 ins. sq. set firmly in the ground,
marked T 5 on S face; I dig pits 18x18x12 ins. on lines
on each side of post 3 ft. dist. raise a mound of earth
4½ ft. base, 1½ ft. high S.W. of cor. Thence I run

RESURVEY N. BDY. RANCHO TUJUNGA, T.2 N., R.14 W., S.B.M.

S. 75° 56' E. on true line.

Over nearly level land and along wire fence.

20.00

Cor. No. 6 Rancho Tujunga.

From Cor. No. 5

N. 70° 30' W. on random line along Ranch bdy.

24.86

To a point 22 lks. S. 19° 30' W. of Cor. No. 4.

A redwood post 4 ins. sq., set firmly in the ground marked T 4 on S.W. face; I dig pits 18x18x12 ins. on lines each side of post 3 ft. dist.; raise a mound of earth 3½ ft. base, 1½ ft. high S. W. of cor. Thence I run

S. 70° E. on true line.

Along wire fence and over nearly level land.

24.86

Cor. No. 5.

From Cor. No. 4, Rancho Tujunga N. 78° W. on random line along ranch bdy.

25.16

A point 15 lks. S. 12° W. of cor. No. 3.

A redwood post 4 ins. sq., set firmly in the ground marked T 3 on S. W. face. I dig pits 18x18x12 ins. on lines each side of post 3 feet dist. and raise a mound of earth 3½ ft. base, 1½ feet high S. of cor. Thence, I run

S. 77° 40' E. on true line.

Over nearly level land and along wire fence.

25.16

Cor. No. 4 Rancho Tujunga.

From cor. No. 3

N. 56° 30' W. on random line along ranch bdy.

34.18

To Cor. No. 2.

A redwood post set firmly in the ground marked T 2 on S. W. face. I dig pits 18x18x12 ins. on line each side of post 3 ft. dist. raise a mound of earth and rock 4 ft. base, 1½ ft. high S.W. of cor. Thence I run

S. 56° 30' E. on true line.

Along wire fence and nearly level land.

34.18

Cor. No. 3.

April 24, 1902.

RESURVEY E. BDY. RANCHO TUJUNGA, T.2 N., R.14 W., S.B.M.

April 25, At 8h. 0m. a.m., l.m.t., I set off 34° 17' on the lat. arc and 13° 02' N. on the decl. arc, and determine a true meridian with the solar at a point on line bet. corm. No. 1 and No. 2, where I can see both corners and find that the true course is N. 65° 15' W. From cor. No. 1 as described by the surveyor general. S. 65° 15' E. on true line along level land.

23.90

Cor. No. 2.

RESURVEY E. BDY. RANCHO TUJUNGA, T.2 N., R.14 E., S.B.M.

April 25, at 2h. On. p.m., l.m.t., I set off $34^{\circ} 17'$ on the lat. arc, $13^{\circ} 7'$ N. on the decl. arc and determine a true meridian with the solar at cor. No. 8, Rancho Tujunga, which is also cor. No. 29 of San Gabriel Forest Reserve, marked and witnessed as described by the Surveyor general. From this cor. a flag on cor. No. 9 is visible and bears S. $10^{\circ} 45'$ E. which is the true line along ranch bdy.

17.78 Cor. No. 28 of San Gabriel Forest Reserve, which is also closing cor. bet. secs. 1 and 12 marked and witnessed as described by the Surveyor general.

33.18 Cor. No. 9 Rancho Tujunga --
A redwood post 4 ins. sq. set firmly in the ground, marked T 9 on S.W. face, a mound of rocks $4\frac{1}{2}$ ft. base, $2\frac{1}{2}$ ft. high S.W. of cor.

April 25, 1902.

Land nearly level, soil 2d rate.

From cor. No. 3, I run

S. $47^{\circ} 30'$ E. on random line along ranch bdy.

37.00 A point 41 lks. N. $42^{\circ} 30'$ E. of cor. No. 10 --
A redwood post 4 ins. sq. set firmly in the ground marked T 10 on S.W. face, dig pits $15 \times 15 \times 12$ ins. on line each side of post 3 ft. dist.; raise a mound of rocks 2 ft. base, $1\frac{1}{2}$ ft. high S.W. of cor.

Thence I run

N. $46^{\circ} 52'$ W. on true line along ranch bdy.
Over broken hills.

19.00 Top of spur descending S.W.

23.00 A road course E. & W. and enter field.

37.00 Cor. No. 9.
Land broken, soil 3d rate.

From cor. No. 10

S. 22° E. on random line along ranch bdy. setting a temp. cor. at 40.00 chs.

96.00 A point 112 lks. N. 68° E. of cor. No. 11
A redwood post 4 ins. sq., set firmly in the ground marked T 11 on S.W. face; dig pits $18 \times 18 \times 12$ ins. on line each side of post 3 ft. dist.; raise a mound of rocks 3 ft. base, 2 ft. high S.W. of cor. --

Thence I run

N. $21^{\circ} 20'$ W. on true line
Over brushy mesa.

8.80 Intersect range line at a point from which $\frac{1}{4}$ sec. cor. of sec. 18, bears north 18.00 chs. dist.
Set an elder post 3 ft. long 3 ins. sq., 24 ins. in ground for closing cor. to fract. secs. 13 and 18, marked C C 5 2 N R 13 W. S 18 on N.E. R 14 W, S 13 on N.W. and T on S.W. faces.

Note: It is necessary to set this post diagonally with the line to get the markings in proper places. Raise a mound of rocks 3 ft. base, 2 ft. high N. of cor.

RESURVEY E. BDY. RANCHO TUJUNGA. T.2 N., R.14 W., S.B.M.

56.00 Set a rock 14x10x8 ins. 10 ins. in ground marked T $\frac{1}{2}$ M on S.W. face, dig pits 18x18x12 ins. on line each side of rock 3 ft. dist.; raise a mound of rocks 2 ft. base, 1 $\frac{1}{2}$ ft. high S.W. of cor. Enter broken hills.

96.00 Cor. No. 10
Land broken hills and brush mesa.
Soil 3rd rate.

From Cor. No. 11
S. 80° E. on random line on ranch bdry. setting a temp. station at 40.00 chs. Over broken mesa.

96.00 A point 167 lks. N. 10° E. of cor. No. 12 which is a mound of rocks without marks. I set a sound elder post 4 ins. in diam. 24 ins. in the ground on N.E. side of mound marked
T 12 on S.W. side,
Thence, I run
N. 79° W. on true line.

56.00 Which is 40.00 chs. from cor. No. 11, I set a rock 16x10x8 ins. 10 ins. in the ground marked T $\frac{1}{2}$ M on S face, raise a mound of rocks 2 ft. base 1 $\frac{1}{2}$ ft. high S. of cor.
Pits impracticable.

96.00 Cor. No. 11.
Land brushy mesa.
Soil 3rd rate.

RESURVEY E.BDY.RANCHO TUJUNGA. T.2 N.,Rgs.13 & 14 W., S.B.M.

From cor. No. 13 Rancho Tujunga cor. No. 12 is visible and bears N. 39° 30' E. on true line along wire fence.

11.50 Road, course E. & W. leave field and enter dense brush.

52.00 Cor. No. 12. April 27, 1902.

Land, hilly.
Soil 2nd and 3rd rates.

RESURVEY OF PART OF N. BY. RANCHO SAN FERNANDO

T. 2 N., R. 14 W., S. B. M.

April 28, at 5h. Op. a.m., l.m.t., I set off 34° 17' on lat. arc and 1h° 0' N. on the decl. arc, and determine a true meridian with the solar at the cor. No. 1 Rancho Tujunga, which is also cor. No. 3 of Rancho Ex Mission San Fernando --
Thence, I run

S. 81° W. on random line along bdy. of Rancho Ex Mission de San Fernando.

10.50 The cor. called for cannot be found; set temp. cor. and run N. 82 $\frac{1}{2}$ ° W. on random line along ranch bdry.

21.50 Cor. called for cannot be found set temp. cor. and run N. 74 $\frac{1}{2}$ ° W. on random line along ranch bdry.

64.00 Cor. called for cannot be found set temp. cor. and run S. 82° W. on random line.

RESURVEY OF PART OF N. BDY. RANCHO SAN FERNANDO

T. 2 N., R. 14 W., S. 4 N.

- 3.76 A point 43 lks. S. and 83 lks. E. of closing cor. to fracl. secs. 1 and 6 on line bet. ranges 14 and 15, which is a 4 x 4 ins. redwood post previously described. Thence, I run
N. 82° 15' E. on true line along base of hills.
- 3.78 Set a redwood post 3 ft. long 4 ins. sq., 24 ins. in ground for cor. of Rancho San Fernando No. 6 marked S F 6 on S. face, dig pits 18x18x12 ins. on line each side of post 3 ft. dist.; raise a mound of rocks 2 ft. base 1½ ft. high S. of cor. -- Thence, I run
S. 74° 26' E. on true line.
- 64.75 Set a redwood post 3 ft. long 4 ins. sq. 24 ins. in ground for cor. No. 5 marked S F 5 on S. face deposit a rock 8x4x3 ins. marked S.F. alongside of post 2 ft. below surface from which a eucalyptus 14 ins. in diam. bears N. 7° 30' E. 155 lks. dist., marked S F 5 B T; dig pits 24x24x12 ins. on line each side of post 3 ft. dist. this cor. is in an orchard -- mound impracticable -- Thence, I run
S. 82° 16' E. on true line through orchard and vineyards.
- 21.54 Set a redwood post 3 ft. long 4 ins. sq. 24 ins. in ground for cor. No. 4, marked S F 4 on S face; deposit a rock 8x4x3 ins. marked S F alongside post 2 ft. below surface, dig pits 18x18x12 ins. on line each side of post, 3 ft. dist.; raise a mound of earth 3½ ft. base, 1½ ft. high S. of cor. Thence I run
N. 81° 18' E. on true line. Leave orchard and cross over spur, descending S.
- 10.57 Cor. No. 3 Rancho San Fernando.
Last 10.12 chs. hilly land.
Soil 3rd rate.
Rolling land 90.41 chs.
Soil, 2nd and 3rd rate.

April 30, 1902.

FINAL OATH OF U. S. DEPUTY SURVEYOR

I, William A. Sickler, United States Deputy Surveyor, do
----- solemnly swear that in pursuance of a contract received from James M. Gleaves, United States Surveyor General for California, bearing date of the 22nd day of April, 1901, I have well, faithfully and truly, in my own proper person, and in strict conformity with the instructions furnished by the U. S. Surveyor General for California, the Manual of Surveying Instructions, and the laws of the United States, surveyed all those parts or portions of Tp. 2 North, Range 14 West of the San Bernardino Base and Meridian, in the State of California, which are represented in the foregoing field notes, as having been surveyed by me and under my direction; and I do further solemnly swear that all the corners of said survey have been established and perpetuated in strict accordance with the Manual of Surveying Instructions and the special written instructions of the U. S. Surveyor General for California, and in the specific manner described in the field notes, and that the foregoing are the original field notes of such survey, and should any fraud be detected, I will suffer the penalty of perjury, under the provisions of an act of Congress approved August 8, 1846.

William A. Sickler,
United States Deputy Surveyor

Subscribed by said William A. Sickler and sworn to before me
this 29 day of Sept. 1902.

Will H. Holcomb,

Co. Clerk

By C. H. Roberts,

Deputy
