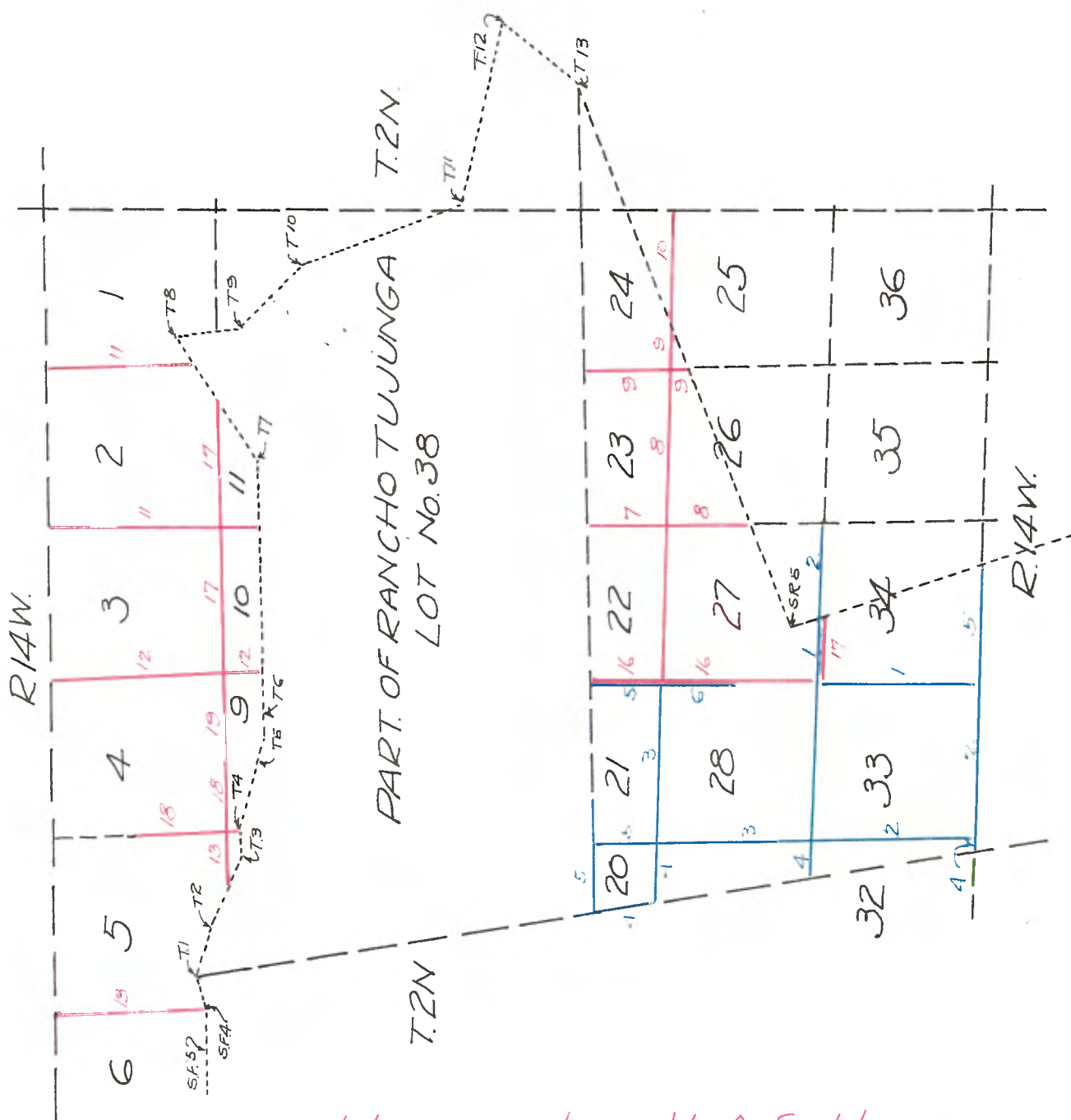


COPIED FROM PHOTOGRAPHIC COPIES

FURNISHED BY

U. S. GENERAL LAND OFFICE

WASHINGTON, D. C.



T. 2 N. - R. 14 W. - SAN BERNARDINO

In order to find the proper adjustment for my compass in subdividing this Township, I go to the S.W. cor. of the Township (the East line not being established) Thence on blank line North on West bdry. of Sec. 31.

Var. 14° E.

40.00 To point, could not find $\frac{1}{4}$ sec. cor.

80.07 " " 56 lks. West of cor. to secs. 25, 30, 31 & 36.

Hence to retrace this line or to run parallel thereto I must adjust my compass to a Va. 13°36' E.

Subdivision commenced
Feby. 24th, 1876.

On south bdry. of Tp. at cor. to secs. 3, 4, 33 & 34, from which an Elder 10 in. dia. marked S.T.1 N. R. 14 W. S.3 bears S. 53½° E. 86 lks. dist. North bet. secs. 33 & 34.

Var. 13°36' E.

11.00 To a point from which Dr. Oliver's house bears E. dist. 17 chs.

15.50 To Los Angeles road, co. N.W. & S.E.

37.00 Base of spur of San Rafael Mts., co. N.W. & S.E.

40.00 To $\frac{1}{4}$ sec. cor. set 2x4 post, 4 ft. long, with chn. stake in N. side 1 ft. deep made earth mound $4\frac{1}{2}$ ft. dia. 2 ft. high with pits 18 in. sq. 12 in. deep on West slope of spur.

46.50 Ravine 1 ch. wide, co. S.W.

50.00 Top of spur, co. S.W.

53.50 Live Oak 16 in. dia. on line.

66.00 Canon 3 chs. wide, co. S.W.

80.00 Cor. to secs. 27, 28, 33 & 34, set elder post 4 ft. long, 4 in. dia. in stone md. $4\frac{1}{2}$ ft. dia. 2 ft. high, th. East of deep ravine, co. S.S.E. to meet the arc above 66 chs.

Land 1st 37 chs. gentle ascent, last 43 chs. very hilly.
Soil 2nd rate.

East on true line bet. secs. 27 & 34.

Var. 13°36' E.

1.50 Top of spur, co. S.

4.50 Ravine 20 lks. wide, co. S.

12.00 Top of ridge, co. S.

18.00 Ravine 20 lks. wide, S.

20.00 Ridge, co. S.E.

21.35 Int. West line of Rancho San Rafael, set stone 18x14x23, in md. of stone on point of spur at junction of two ravines, one from N.W. the other from N.E. thencecourse S.W.

T. 2 N., R. 14 W. San Bernardino

To ascertain this connection I went to Sta. No. 5 of Rancho San Rafael, which is an Oak post 5 in. dia. in stone and on top of high red peak on the summit of San Rafael Mts. from which point a flag I had previously caused to be set on N.E. cor. of Rancho Providencia in the west line of Rancho San Rafael is visible and bears S. 24° E. I run thence S. 24° E.

Va. 13°36' E.

Retracing West line of Rancho San Rafael as follows:

- 14.40 Int. of my line bet. secs. 24 and 34, dist. 21.35 chs. East of cor. to secs. 27, 28, 33 & 34, where I caused a stone to be set as above stated.
Land very rolling. Soil 3rd rate.
I then flagged this line through to N.E. cor. of Rancho Providencia, setting flags upon line so as to make in convenient to intersect it at other points in survey.
It is impracticable to run N. bet. secs. 27 & 28, on account of steep and broken nature of mts.
Feby. 25th, 1876.
- West on South bdry. of Tp. along South line of Sec. 33.
Va. 13°36' E.
- 28.00 Centre line of S.P.R.R. co. N.W. and S.E.
- 30.00 Road along R.R.
- 39.92 Old $\frac{1}{4}$ sec. cor. could find no trace of old post. Hence I re-establish cor. by setting post 2x4, 4 ft. long, with chn. stake on West side 1 ft. deep in old mound.
- 42.00 Board cabin 150 lks. S. of line.
- 60.00 Tujunga wash, co. 8.
- 80.00 Cor. to secs. 4, 5, 32 & 33. This point is in Tujunga Wash and I could find no trace of old md. Hence re-establish cor. by setting post 4 in. dia. 4 ft. long, with chn. stake on West side 1 ft. deep and raised earth & stone md. $4\frac{1}{2}$ ft. dia. 2 ft. high with pits 18 in. sq. 12 in. deep, from which a bushy topped Live Oak 14 in. dia. N. 86 $\frac{1}{2}$ ° E. 300 lks.
Land level. Soil cut by washes, 2nd rate.

North bet. secs. 32 & 33.

Va. 18°36' E.

- 27.00 Road, W.E. & W.
- 40.00 To $\frac{1}{4}$ sec. cor. set Redwood post 2x4, 4 ft. long, with chn. stake, on North side, 1 ft. deep and raised earth md. $4\frac{1}{2}$ ft. dia. 2 ft. high with pits, 18 in. sq. 12 in. deep.
- 42.00 Centre of S.P.R.R. co. N.W. & S.E.
- 80.00 Cor. to secs. 28, 29, 32 & 33, Set Redwood post 4 ft. long, 4x4, with chn. stake on North side, 1 ft. deep and raised earth md. $4\frac{1}{2}$ ft. dia. 2 ft. high with pits 18 in. sq. 1 ft. deep, whence bears a W. Bycamore 14 in. dia. S. 78 $\frac{1}{2}$ ° E. 554 lks.
Land level. Soil 2nd rate.
Covered by washed sand & pebbles from the Tujunga Wash.
-

T. 2 N. - R. 14 W. - SAN BERNARDINO

East on random line bet. secs. 28 & 33.

Var. 13°36' E.

- 21.00 Los Angeles Road, co. S.E.
- 40.00 To temp. $\frac{1}{4}$ sec. cor. at base of spur of San Rafael Mts.,
co. N.W. & S.E.
Ascend.
- 60.00 Top of spur, co. N.W.
- 78.50 Ravine 20 lks. wide, co. S.S.W.
- 79.80 To point 18 lks. south of cor. to secs. 27, 28, 33 & 34.
Thence S. 89°52' W. on true line.

Var. 13°36' E.

- 39.90 To $\frac{1}{4}$ sec. cor. set post 2x4, 4 ft. long, with chn. stake
in East side 1 ft. deep & raised earth md. $4\frac{1}{2}$ ft. dia.,
2 ft. high with pits 18 in. sq. 1 ft. deep.
- 78.80 Cor. to secs. 28, 29, 32 & 33.
Land 1st 40 chs. level.
Last 40 chs. very hilly.
Soil 2nd rate.

North bet. secs. 28 & 29.

Var. 13°36' E.

- 16.50 Cottonwood 18 in. dia. 50 lks. E. of line.
- 28.00 Los Angeles Road, co. N.W. & S.E.
- 32.00 Base of most westerly spur of San Rafael Mts. co. N.W. & S.E.
- 35.00 Top of spur co. W. about 5 chs. & terminate in the San Fernando
Valley.
- 38.50 North base of spur, co. E. & W. south side of small valley of
ravine from East bet. the Tujunga and San Rafael Mts.
- 40.00 To $\frac{1}{4}$ sec. cor. set elder post 2x4, 4 ft. long, with chn. stake
on North side 1 ft. deep in ground and raised earth md. $4\frac{1}{2}$ ft.
dia. 2 ft. high with pits 18 in. sq. 1.2 ft. deep
- 47.00 Road co. N.E.
- 76.00 Bed of cactus, co. E. & W.
- 80.00 Cor. to secs. 20, 21, 28 & 29, set elder post 4 in. dia. 4 ft.
long, with chn. stake on N. side, 1 ft. deep & raised earth md.
 $4\frac{1}{2}$ ft. dia. 2 ft. high, with pits 18 in. sq. 1 ft. deep, about
4 chs. South of South base of Tujunga Mts. co. E. & S.W.
Land mostly level. Soil 3rd rate.
Covered mostly by washed sand & pebbles.

East on true line bet. secs. 21 & 28.

Var. 13°36' E.

Along South base of Tujunga Mountains.

T. 2 N. - R. 14 W. - SAN BERNARDINO

- 20.00 To point whence the houses and improvements of J. & R. G. McClure bear South dist. 16 chs.
- 40.00 To $\frac{1}{4}$ sec. cor. set post 2x4, 4 ft. long with chn. stake on East side 1 ft. deep & made earth md. $4\frac{1}{2}$ ft. dia. 2 ft. high with pits 18 ins. sq. 1 ft. deep at mouth small ravine from Tujunga Mts. on North at 3 chs. south of south base of the Tujunga Mts.
- 74.00 Bed of cañti, co. N. 70° E. & S. 70° W.
- 80.00 Cor. to secs. 21, 22, 27 & 28, set elder post 4x4, 4 ft. long with chn. stake on East side 1 ft. deep & raised earth md. $4\frac{1}{2}$ ft. dia. 2 ft. high with pits 18 ins. sq. 1 ft. deep, in centre of Valley about 12 chs. wide from which bears an elder 6 in. dia. South 75 lks. dist. This line lies along base of spur at south base of the Tujunga Mountains.
Land level. Soil 3rd rate.

Feby. 26th, 1876.

Went on true line bet. secs. 20 & 29.

Va. 13°36' E.

- 12.00 Los Angeles Road, co. N.W. & S.E.
- 26.13 Int. of E. line of Rancho San Fernando, set post 2x4, 4 ft. long, with chn. stake, on West side 1 ft. in ground & made stone md. $4\frac{1}{2}$ ft. dia. 2 ft. high.
Land level. Soil 3rd rate.
- To find this intersection I go to Sta. No. 14 of Rancho Tujunga on East bdy. of Rancho San Fernando which cor. is an Oak post 4 in. dia. marked S.F. & T. 14, set in stone and on South slope of westerly spur of the Tujunga Mts. about 15 chs. East of termination in the San Fernando Valley. From this point the Live Oak S.F. N.2 T.No.3, the N.W.cor. of Rancho Providencia is visible & bears S. & E. Hence I run S. 8° E.
- 5.00 Base of spur co. N.W. & S.E.
- 25.50 West side small knoll 3 chs. dia. & from 3 to 10 ft. high
- 32.25 To line bet. secs. 20 & 29.
I then flagged this line through to Sta. No. 2 of San Fernando Rancho & Sta. No. 3 of Rancho Providencia, setting flags so as to be able to intersect the East bdy. of Rancho San Fernando in the balance of my survey.

Went on true line bet. secs. 29 & 32.

Va. 13°36' E.

- 15.49 Intersection of East bdy. of Rancho San Fernando as previously flagged by me, set post 2x4, 4 ft. long, with chn. stake on West side 1 ft. deep & made earth md. $4\frac{1}{2}$ ft. dia. 2 ft. high with pits 18 in. sq. 1 ft. deep.
Land level. Soil 2nd rate.

T. 2 N. - R. 14 W. - SAN BERNARDINO

West on South bdry. of Tp. along south line of Sec. 32.
Va. 13°36' E.

- 4.50 To intersection of Easy bdry. of Rancho San Fernando as previously flagged by me. Set elder post 2x4, 4 ft. long with chn. stake on West side, 1 ft. deep & made earth md. 4½ ft. dia. 2 ft. high, dug pits 18 in. sq. 1 ft. deep.
Land level. Soil 3rd rate.

East on South line of Tp. along south bdy. of Sec. 34 from the
¼ sec. cor.
Va. 13°36' E.

- 8.00 Wash 20 lks. wide, co. S.
26.26 Intersection of West bdry. Rancho San Rafael as previously
flagged by me, set elder post 2x4, 4 ft. long, with chn.
stake on E. side 1 ft. deep & made earth md. 4½ ft. dia. 2
ft. high & dug pits 18 in. sq. 1 ft. deep
Land gently ascending.
Soil 2nd rate.

Feby. 28th, 1876.

North bet. secs. 20 & 21.

Va. 13°36' E.

- 4.00 Base of Tujunga Mts., co. E. & N.W.
Ascend.
14.00 Top of spur, co. S.W. over broken spurs of Tujunga Mts.
32.22 Int. South bdy. of Rancho Tujunga, set stone 4x12x19, two-
thirds in ground.
To ascertain this connection I go to Sta. No. 14 of Rancho
Tujunga & run
Thence N. 89° E.

Va. 13°36' E.

Retracing south bdy. of Rancho Tujunga. Descend.

- 4.00 Los Angeles Road, co. North
Through low saddle in Western spur of the Tujunga Mts.
Ascend.
20.00 Top of rolling spurs of Tujunga Mts.
30.25 Line bet. secs. 20 & 21, dist. 32.22 chs. North from cor. to
secs. 20, 21, 28 & 29, where I caused a stone to be set as
stated above.
Land quite rolling. Soil 3rd rate.
I then flagged this line out for a distance of a little more
than a mile East so as to be able to intersect it in the
balance of my survey.

North bet. secs. 21 & 22.

Va. 13°36' E.

- 6.50 South base of Tujunga Mts., co. E. & W. Ascend.

T. 2 N. - R. 14 W. - SAN BERNARDINO

- 15.00 Top of spur, co. S.W.
Then over broken spurs.
- 33.20 Int. south bdy. of Rancho Tujunga as previously flagged
by me, set stone 9x13x21, two-thirds in ground.
Land very rolling & broken.
Soil 3rd rate.
-
- South bet. secs. 27 & 28. Va. 13°36' E.
- .75 Elder 6 in. dia. on line.
- 5.50 Base of San Rafael Mountains, co. E. & W. Leave thick bed
of caoti. Ascend.
- 12.00 Top of spur, co. N.W.
- 21.00 Ravine 40 lks. wide, co. N.W.
- 27.00 Top of rolling spurs & across same.
- 40.00 To $\frac{1}{4}$ sec. cor. set stone 5x11x20, two-thirds in ground.
Discontinue line further South on account of steepness of
mountains.
-

General Description

The lands lying to the East of my lines, South of Rancho Tujunga and north of Rancho San Rafael being steep, broken and barren, it is impracticable to survey them. The greater portion of the remainder of the Tp. is included in the Rancho San Rafael, San Fernando, and Tujunga, except a portion on the North, which is in the Sierra Madre Mountains and unsurveyable.

John Goldsworthy
U.S. Dep. Sur.

REPORT

The land in this Tp. included in my survey is mostly dry and sandy except the small valley of about 200 acres occupied by the McClures which is very fair agricultural land.

SUBDIVISION LINES OF TP. 2 N., R. 14 W., S. 8. N.

April 13, at 5h.0m.a.m., 1.m.t., I set off 34°15' on the lat. arc, S 53° N. on the decl. arc, and determine a true meridian at the cor. to secs. 21, 22, 27 and 28. This cor. is a rock set firmly in the ground with two notches on the S. and three notches on the E. edges, there is a mound of rocks 2 ft. base 1½ ft. high west of rock from which E.M. Wilk's house bears N. 32°15' E. 416 lks. dist.

An elder tree 8 ins. in diam. bears S. 61° E. 320 lks. dist., marked T. 2 N., R. 14 W., S. 27 B. T.

The elder bearing tree made in the original survey has disappeared.

Thence, I run East, on true line bet. secs. 22 and 27. Over level ground alongside vineyard.

- 20.00 Leave vineyard and enter dense undergrowth of cactus.
- 40.00 Set a rock 30x12x5 ins. 20 ins. in ground for ¼ sec. cor. marked ¼ on N. face, from which a live oak 12 ins. in diam. bears N. 82° W. 36 lks. dist. marked ¼ S. 22 B.T. raise a mound of rocks 3 ft. base, 2 ft. high N. of cor.
- 41.00 Leave Valley and enter broken hills covered with dense undergrowth of brush.
- 80.00 Set rock 18x5x5 ins. 12 ins. in ground for cor. to secs. 22, 23, 26 and 27, marked with 2 notches on S. and 2 notches on E. edges from which a live oak 20 ins. in diam. bears N. 62° W. 95 lks. dist. marked T 2 N, R 14 W. S. 22 B.T., raise a mound of rock 2 ft. base, 1½ ft. high W. of cor. Pits impracticable.
Land, mountainous and valley.
Soil, 1st and 3rd rate. No timber.
Mountainous land or covered with dense undergrowth.
60.00 chs.

North, on true line bet. secs. 22 and 23.

Descend abruptly through brush.

- 4.00 Road course E. and W. Enter valley 75 ft. below cor.
- 9.50 Leave valley and ascend the rough side of Tujunga Mountain.
- 39.10 Intersect S. bdry. of Rancho Tujunga at a point from which T. 3 N. bears S. 85° W. 15.00 chs. dist.

Set rock 24x14x10 ins. 15 ins. in ground for closing cor. of fracl. secs. 22 & 23 marked G G on S and T on N. faces, dig pits crosswise on each line 30x24x12 ins. east & west 3 ft. and 24x18x12 ins. south of rock 7 ft. dist. and raise a mound of rock and earth 3 ft. base 1½ ft. high S. of cor.
Land, mountainous & rolling. Soil, 4th rate.
No timber.
Mountainous land, 29.60 chs.

April 13, 1902.

SUBDIVISION TOWNSHIP 2 N., RANGE 14 WEST, S.R.M.

April 14 at 8h. Om. a.m., l.m.t., I set off 34°15' on the lat. arc, 9°15' N. on the decl. arc, and determine a true meridian at the cor. to secs. 22, 23, 26 & 27 and run thence South on true line bet. secs. 26 & 27.
Ascend steep side of Verdugo Mountain.

- 5.75 Top of ridge 200 ft. above cor. course east and west. Descend.
9.00 Gulch 100 ft. below ridge, course E. Ascend.
15.00 Ridge 400 ft. above gulch, course E. and W. Descend.
20.50 Ravine 500 ft. below ridge 30 links wide, course E.
40.00 Set rock 22x10x6 ins. 14 ins. in ground for $\frac{1}{4}$ sec. cor. marked $\frac{1}{4}$ on W. face from which a live oak 30 ins. in diam. bears N. 54° E. 26 lks. dist. marked $\frac{1}{4}$ S 26 B T, raise mound of rocks 3 ft. base 2 ft. high W. of corner.
Pits impracticable.
45.25 Intersect N. boundary of Rancho San Rafael at a point from which S.R. $\frac{1}{4}$ N. bears S. 68° W. 19.00 chs.
Set rock 18x10x6 ins. 12 ins. in ground for closing cor. to frasl. secs. 26 & 27, marked C O on N and S R on SS faces; raise a mound of rocks 3 $\frac{1}{2}$ ft. base, 2 $\frac{1}{2}$ ft. high N. of cor.
Land mountainous. Soil, 4th rate.
No timber. Mountainous land, 45.25 chs.

From cor. to secs. 22, 23, 26 & 27 - East on true line bet. secs. 23 and 26. Ascend through dense brush.

- 15.00 Top of spur 300 ft. above corner c.S.W. Descend.
39.80 Enter ravine, course N.W. 500 ft. below top of spur.
40.00 Set a rock 20x10x8 ins. 14 ins. in ground for $\frac{1}{4}$ sec. cor. marked $\frac{1}{4}$ on N. face from which
A live oak tree 6 ins. in diam. bears N. 56 $\frac{1}{2}$ ° west
46 lks. distant marked $\frac{1}{4}$ S. 23 B.T.
A rock 24 ins. sq., 20 ins. above ground bears south 47° east 36 links distant, marked $\frac{1}{4}$ S 26 B. R.
43.00 Leave ravine and ascend.
64.68 Top of spur descending E. 400 feet above ravine.
80.00 Set a rock 16x8x4 ins. 12 ins. in ground for cor. to secs. 23, 24, 25 and 26, marked with 2 notches on S. and 1 notch on E. edges, from which a ledge 25 feet long 3 feet high bears N. 45° E. 11 links dist. marked T 2 N., R 14 W., S 24 B.R.; raise a mound of rock 2 ft. base 1 $\frac{1}{2}$ ft. high west of corner.
Land, mountainous.
Soil, 4th rate.
Scattering oak timber in ravine.
Mountainous land, 80.00 chs.

April 14, 1902.

SUBDIVISION LINES OF T. 2 N., R. 14 W., S.B.M.

April 15, At 5h. On. a.m. 1.m.t., I set off 34°15' on lat. arc, 9°36' N. on the decl. arc, and determine a true meridian with the solar at the cor. to secs. 23, 24, 25 and 26, and run North on true line bet. secs. 23 and 24.
Ascend rough mountain.

15.00 Top of spur 800 ft. above ravine.

32.00 Ravine 50 lks. wide, course west, ascend.

40.00 Set rock 14x12x5 ins. 9 ins. in ground for $\frac{1}{4}$ sec. cor. marked $\frac{1}{4}$ on W. face from which

A live oak 8 ins. in diam. bears S. 20° E. 75 lks. dist., marked $\frac{1}{4}$ S. 24 B.T. raise a mound of rock 3 ft. base, 2 ft. high W. of cor.

Pits impracticable.

41.75 Intersect S. bdy. of rancho Tajunga at a point from which T 2 N bears S 55° West 14.90 chs. distant.

Set a rock 20x10x6 ins. 14 ins. in ground for closing cor. to fracl. secs. 23 and 24, marked T on W and C C on S faces; raise mound of rocks 3 ft. base, 2 ft. high south of cor.

Pits impracticable.

This cor. is on side of gulch about 30 lks. west of bottom.

Land, mountainous.

No soil.

Mountainous land, 41.75 chs.

From cor. to secs. 23, 24, 25 and 26.

South on true line bet. secs. 25 and 26.

Descend rough mountain.

8.00 Ravine 100 lks. wide, 250 ft. below cor. course W. ascend.

12.50 Intersect N. bdy. of Rancho San Rafael at a point from which S R 2 N bears N. 68° E. 14.40 chs. dist. Set a post 3 ft. long 3 ins. sq., 24 ins. in ground for closing cor. to fracl. secs. 25 and 26, marked C C T 2 N on N; R 14 W S 25 on E; S 26 on W and S R on S faces; from which a live oak 10 ins. in diam. bears S. 68° W. 100 lks. dist.; marked T 2 N R 14 W C C S T; dig pits 24x12x12 ins. N. 68° E. and S. 68° W. 3 ft. and 30x24x12 ins. N. of post. 7 ft. dist.; raise mound of rock 3 ft. base, $1\frac{1}{2}$ ft. high N. of cor.

Land, mountainous.

Soil, 4th rate.

Mountainous land, 12.50 chs.

From cor. to secs. 23, 24, 25 and 26.

East on true line bet. secs. 24 and 25.

Along S. slope of rough mountain.

29.00 Top of ridge, course E. and W. about 250 feet above creek which passes around E. base.

30.90 Intersect northerly bdy. of rancho San Rafael, at a point from which S.R. 2 N. bears S. 68° W. 19.20 chs. dist.

Set a rock 20x6x4 ins. 14 ins. in ground for closing cor. to fracl. secs. 24 and 25, marked S R on E and C C on W faces; raise

SUBDIVISION LINES T 2 N., R 14 W., S. B. M.

a mound of rocks 2 ft. base $1\frac{1}{2}$ ft. high W. of cor. from which a rock $14 \times 8 \times 6$ ins. in rock mound on top of ridge, bears W. 200 lks. dist. This cor. is on very steep side of bluff about 100 lks. W. of creek.

NOTE: In order to assist in establishing the relation between the subdivisions and the range line I continue this line to E. side of Tp.

- 31.90 Creek 50 lks. wide, water in pools course S.W.
- 41.00 Top of ridge 300 ft. above creek, course S.W. and N.E. thence along slope of mountain.
- 50.20 Intersect range line for establishment of which see notes of re-surveys of Extérieurs, at a point 8.35 chs. N. of the creek. Norway mentions as being 75.00 chs. North of cor. to secs. 25, 30, 31 and 36 which would make 335 lks. N. of point where he established cor. to secs. 19, 24, 25, 30; marked
A buckhorn tree 4 ins. in diam. C O T 2 N S 25 on S W
R 14 W S 24 on N W sides with 4 notches on N. and 2 notches on S. sides; raise a mound of rocks around tree. Pits impracticable.
Land, mountainous and covered with brush and rock.
Mountainous land, 50.20 chs.

From the cor. to secs. 12 and 13 on range line.
West on true line bet. secs. 12 and 13.
Descend through brush.

- 16.07 Intersect easterly bdy. of rancho Tujunga at a point from which T $\frac{1}{2}$ M bears N $21^{\circ}20'$ W. 260 lks. dist.
Set a rock $18 \times 12 \times 6$ ins. 12 ins. in ground for closing cor. to fractional secs. 12 and 13, marked C O on E T on W and 4 grooves on S faces; dig pits crosswise on each line $30 \times 24 \times 12$ ins. N. $21^{\circ}20'$ W. 3 ft.; $24 \times 18 \times 12$ ins. E. of rock 7 ft.; raise a mound of rocks 5 ft. base 3 ft. high E. of cor.
Land, sloping.
Soil, 4th rate.
Through dense undergrowth 16.07 chs.

April 16, 1902

May 7 at 10h. Am. a.m., l.m.t. I set off $34^{\circ}18'$ on lat. arc, $16^{\circ}42'$ N. on the decl. arc, and determine a true meridian with the solar at the cor. to secs. 1, 2, 35 and 36.

Thence I run
South on true line bet. secs. 1 and 2.
Descend steep side of rough mountain.

- 40.00 Set a rock $16 \times 10 \times 8$ ins. 12 ins. in ground for $\frac{1}{4}$ sec. cor. marked $\frac{1}{4}$ on W. face; raise a mound of rocks 3 ft. base, 2 ft. high W. of cor. This cor. is 1.00 ch. S. of a high red rock bluff, about 1.00 ch. W. of dry gulch, 500 ft. below sec. cor.
- 45.00 Cross gulch, course S.W.
- 71.10 Intersect Rancho Tujunga at a point from which cor No. 8,

SUBDIVISION LINES T 2 N., R 14 W., S. B. M.

bears N. 57°41' E. 15.04 chs. dist.

Set a rock 16x10x8 ins. 12 ins. in ground for closing cor. to fractl. secs. land 2, marked O O on N. T on S faces, with 1 groove on E. 5 grooves on W. faces; raise a mound of rocks 3 ft. base, 2 ft. high N. of cor.

Pits impracticable.

Land, mountainous.

Soil, rocky.

Mountainous land, 71.10 chs.

May 7, 1902.

From the cor. to secs. 2, 3, 10 and 11, marked and witnessed as described by the surveyor general I run North on true line bet. secs. 2 and 3. Ascend.

- 4.00 Top of ridge, course E. and W. Descend.
- 15.00 Gulch 25 lks. wide, course S.E. Ascend rough mountain.
- 38.00 Top of ridge, course E. and W.
- 40.00 Set a rock 18x10x8 ins. 12 ins. in ground for $\frac{1}{4}$ sec. cor. marked $\frac{1}{4}$ on W. face, dig pits 18x18x12 ins. on line each side of rock 3 ft. dist.; raise a mound of rocks 3 ft. base 2 ft. high W. of cor. This cor. is in depression at head of gulch, facing E.
- 80.80 Intersect Tp. line at a point from which cor. to secs. 34 & 35 bears E. 400 lks. dist.

Set a rock 12x8x6 ins. 8 ins. in ground for closing cor. to secs. 2 and 3, marked

O O on S with 2 grooves on E and 4 grooves on W faces, from which a boulder 3 ft. by 2 ft. 2 ft. above ground bears S. 89° E. 53 lks. dist., marked T 2 N R 14 W S 2 B R; raise a mound of rocks 3 $\frac{1}{2}$ ft. base, 2 ft. high S. of cor. This cor. is on S. face of high mountain 900 ft. above cor. to secs. 2, 3, 10 and 11.

Land, mountainous.

Soil, rocky.

Mountainous land, 80.80 chs.

From cor. to secs. 2, 3, 10 and 11.

South on true line bet. secs. 10 and 11.

Descend.

- 7.50 Top of ridge, course E. and W.
- 12.50 Top of high bluff.
- 15.00 Foot of bluff.
- 22.66 Intersect N. bdy. of Rancho Tujunga at a point from which T $\frac{1}{4}$ N bears N. 89°30' W. 7.60 chs. dist.

SUBDIVISION LINES T 2 N., R 14 W., S. B. M.

Set a rock 20x14x12 ins. 15 ins. in ground for closing cor. to fracl. secs. 10 and 11, marked

C C on N
T on S with
4 grooves on W and 2 grooves on E. faces, raise a mound of rocks 4 ft. base, 2 ft. high N. of cor.

Pits impracticable.
Land, mountainous.
Soil, rocky.
Mountainous land, 22.66 chs.

May 8, 1902

May 9, at 8h. 0m. a.m., 1.m.t., I set off 34°17' on lat. arc, 17°14' N. on decl. arc, and determine a true meridian with the solar at point for cor. to secs. 3, 4, 9, 10 & run North, on true line bet. secs. 3 and 4.

Ascend mountain.

14.00 Spur descending S.W.

40.00 Set a rock 18x12x10 ins. 12 ins. in ground for $\frac{1}{4}$ sec. cor. marked $\frac{1}{4}$ on W. face; raise a mound of rocks 2 ft. base, $1\frac{1}{2}$ ft. high W. of cor. Pits impracticable.

This cor. is on ridge 800 ft. above cor. to secs. 3, 4, 9, 10

40.75 Top of ridge bet. Tujunga and Little Tujunga Valley, course E. and W. Descend abruptly.

80.70 Intersect Tp. line at a point from which cor. to secs. 33 and 34 bears N. 125 lks. dist.
Set a rock 14x8x6 ins. 10 ins. in ground for closing cor. to secs. 3 and 4, marked

C C on S with 3 grooves on E and W faces; dig pits 18x18x12 ins. crosswise on each line E and W 3 ft. and S of rock 7 ft. dist.; raise a mound of rocks and earth $3\frac{1}{2}$ ft. base, $1\frac{1}{2}$ ft. high S of cor. This cor. is on S bank of gulch 900 ft. below $\frac{1}{4}$ sec. cor.

Land, mountainous.
Soil, rocky.
Mountainous land, 80.70 chs.

From point for cor. to secs. 3, 4, 9 and 10, I run South on true line bet. secs. 9 and 10. Descend.

21.85 Foot of mountain intersect N. bdy. of Rancho Tujunga at a point from which T $\frac{1}{2}$ M bears N 89°30' W. 12.40 chs. dist.
Set a rock 20x14x10 ins. 15 ins. in ground for closing cor. to fracl. secs. 9 and 10, marked

C C on N

T on S with 3 grooves on E and W faces from which

SUBDIVISION LINES T 2 N., R 14 W., S. E. M.

An elder tree 8 ins. diam. bears S. 88° W. 40 lks. dist. marked O C B T, raise a mound of rocks 4 ft. base, 2 ft. high N. of cor.

Pits impracticable.
Land, mountainous.
Soil, rocky.

Mountainous land, 21.85 chs.

May 9, 1902.

From cor. to secs. 4, 5, 8 and 9, marked and witnessed as described by the surveyor general, I run South, on true line bet. secs. 8 and 9. Descend along wire fence.

6.00

Intersect N. bdy. of Rancho Tujunga at a point from which cor. No. 4 bears S. 77°40' E. 9.75 chs. dist.

Set a rock 16x14x8 ins. 10 ins. in ground for closing cor. to fracl. secs. 8 and 9, marked O C on N T on S with 2 grooves on W and 4 grooves on E faces; dig pits 24x18x12 ins. S. 77°40' E. and N. 77°40' W. 3 ft. and 18x18x12 ins. N. of cor. 7 ft. dist.; raise a mound of rocks 2 ft. base 1½ ft. high N. of cor.
Land, nearly level.
Soil 1st rate.

From cor. to secs. 4, 5, 8 and 9.
West on true line bet. secs. 5 and 8.
Over nearly level land.

19.00

Intersect N. bdy. of Rancho Tujunga at a point from which cor. No. 3 bears S. 56°30' E. 4.82 chs. dist.
Set a rock 18x12x8 ins. 12 ins. in ground for closing cor. to fracl. secs. 5 and 8, marked

O C on E T on West with 5 grooves on S. faces
dig pits 18x18x12 ins. crosswise on each line
N. 56°30' W. 3 ft. and E 7 ft. from rock, raise
a mound of earth 3½ ft. base, 1½ ft. high E. of
cor.

Land, level.
Soil, 1st rate.

From cor. to secs. 5 and 6 on N. bdy. of Tp. I run South on true line bet. secs. 5 and 6.
Along creek bottom.

5.00

Foot of mountain.

29.00

Top of ridge course E. and W.

Descend.

40.00

Set a rock 18x12x8 ins. 12 ins. in ground for ¼ sec. cor. marked ¼ on W. face; raise a mound of rocks 2 ft. base, 1½ ft. high W. of cor. Pits impracticable.

This cor. is on steep side of gulch facing W.

Descend along E. side of gulch.

18DIVISION LINES T 2 N., R 14 W., S. B. M.

sect N. bdy. of Rancho San Fernando at a point from
a cor. No. 4 bears S. 82°22' E. 3.79 lks. dist.

a redwood post 3 ft. long 4 ins. sq., 24 ins. in ground
closing cor. to fracl. secs. 5 and 6, marked

C O T 2 N R 14 W on N

S 5 with 5 grooves on E

S 6 with 1 groove on W and

S F on S faces dig pits 18x18x12 ins. crosswise
on each line S. 82°22' E. and N. 82°22' W. 3 ft.
and N. of post, 7 ft. dist.; raise a mound of
earth and rock 3½ ft. base, 2 ft. high N. of cor.

Land, mountainous & level land.
Soil, 3d rate.
Mountainous land, 50.25 cms.

May 10, 1902

The northern part and southern part of this township is
very mountainous. The central portion occupied by the
Rancho Tujunga, is nearly level. There are limestone quar-
ries in sections 26 and 27. There is no timber in the
township. There are 2 settlers in sec. 22, 1 in 27, 2 in
12, 1 in 1, 1 in 2, 2 in 9, 1 in 8, 1 in 4, 2 in 5, and 2
in 6.

Boundaries of S. part of Tp. 2 N., R. 14 W.

Course	Dist.	Latitudes		Departures	
		N.	S.	E.	W.
South	24.35		24.35		
S. 68° W.	232.70		87.17		215.77
S. 24° E.	14.40		13.16	5.87	
West	30.75				30.75
North	116.50	116.50			
N. 88° E.	240.10	8.38		239.96	
		124.88	124.68	245.83	246.52
		124.68			245.83
Error in Lat.		.20		Error in Dep.	.69

Boundaries of N. part of Tp. 2 N., R. 14 W., S.B.M.

Courses	Dist.	Latitudes		Departures	
		N.	S.	E.	W.
South	62.51		62.51		
S. 1° 55' W.	81.68		81.68		2.73
South	58.00		58.00		
N. 21° 20' W.	87.20	81.23			31.74
N. 46° 52' W.	37.00	25.60			27.00
N. 10° 45' W.	33.18	32.60			6.19
S. 57° 41' W.	77.00		41.16		65.07
N. 89° 30' W.	135.20	1.18			135.17
N. 75° 56' W.	20.00	4.86			19.40
N. 70° W.	24.86	8.50			23.36
N. 77° 40' W.	25.16	5.37			24.58
N. 56° 30' W.	34.18	18.87			28.50
N. 65° 15' W.	23.90	10.00			21.70
S. 81° 18' W.	10.57		1.60		10.45
N. 82° 16' W.	21.54	2.90			21.34
N. 74° 26' W.	64.75	17.38			62.37
S. 82° 15' W.	3.78		.50		3.75
N. 5° 11' W.	35.88	35.73			3.24
N. 89° 58' E.	44.65	.03		44.65	
East	440.00			440.00	
		224.25	245.46	484.65	486.59
			244.25		484.65

Error in Lat. 1.21 Error in Dep. 1.94

RE-SURVEY SUBDIVISION LINES T_p.2 N., R.14 W., S.B.M.

On account of misclosures developed by the new lines I find it necessary to make some re-surveys to locate the errors.

North on true line bet. secs. 21 and 22.
Over level land,

- 2.00 Road, course E. and W.
- 3.50 Leave level land and ascend rough side of Tujunga Mountain.
- 24.00 Top of ridge, course E. and W. 300 ft. above valley. Descend.
- 33.20 Make diligent but unsuccessful search for corner called for.
- 34.00 Gulch 50 lks. wide, course W. 250 feet below top of ridge.
Ascend.
- 36.50 Intersect S. bdy. of Rancho Tujunga at a point from which
T 4 M bears S. 88° W. 14.90 chs. dist.
Set a rock 14x8x6 ins. 10 ins. in ground for closing cor.
to frasl. secs. 21 and 22, marked T on M and C C on S faces
from which a

Live oak 12 ins. in diam. bears S. 1° W. 206 lks.
dist. marked T 2 M R 14 W S 21 B T.

Raise a mound of rocks 2 ft. base, 1½ ft. high S. of cor.
Pits impracticable.
Land, mountainous.
Soil, 1st and 4th rate.
Mountainous land, 33.00 chs.

South bet. secs. 27 and 28.
Over level land.

- 20.00 Leave level land and ascend mountain.
- 40.00 ¼ sec. cor. on oak post 4 ins. sq., set firmly in the ground,
marked ¼ S on W side.
- 46.00 Top of high ridge 500 ft. above valley course E. and W.
Descend.
- 58.00 Ravine 500 ft. below ridge, course W. ascend.
- 75.00 Top of ridge 500 ft. above ravine course S.W. and N.E. Descend.
- 80.00 Cor. to secs. 27, 28, 33 and 34. The mound of rocks is still
standing but there is no post. To re-establish the cor. I
set a rock 20x12x10 ins. 14 ins. in the ground alongside of
mound on E. side, marked 1 notch on S. 3 notches on E. edges.
Land, mountainous.
Soil, 1st and 4th rate.
Mountainous land, 60.00 chs.

April 18, 1902.

RE-SURVEY SUBDIVISION LINES T.2 N., R.14 W., S.E.M.

April 19, At 10h. Om. a.m., l.m.t., I set off 34°14' on lat. arc, 11°2' N. on decl. arc, and determine a true meridian at the last described cor. and run

East bet. secs. 27 and 34 over broken hills cut by deep gulches.

30.75

Intersect W. bdy. of Rancho San Rafael at a point from which cor. No. 5 bears N. 24° W. 14.40 chs. dist. being unable to find cor. called for I set a rock 12x8x6 ins. 8 ins. in ground for closing cor. to fracl. secs. 27 and 34, marked O O on W and S R on E faces; raise a mound of rocks 2 ft. base, 1½ ft. high W. of cor. This cor. is on side of steep canyon facing W.

Land, mountainous.

Soil, rocky.

Mountainous land, 30.75 chs.

April 19, 1902.

May 11, At 8h. Om. a.m., l.m.t., I set off 34°17' on the lat. arc, 17°46' N. on the decl. arc, and determine a true meridian with the solar at the closing cor. to secs. 2 and 11 -- Thence

S. 89°52' W. on random line bet. secs. 2 and 11.

Over a succession of steep spurs along southerly slope of mountain.

26.50

A point 9 lks. N. of ¼ sec. cor. which is a rock set firmly in the ground marked and witnessed as described by the surveyor-general-- Thence, I run N. 89°40' E. on true line bet. secs. 2 & 11.

7.00

Top of ridge, course N. and S.

18.00

Dry wash, course S.

26.50

Closing cor. bet. sec. 2 and 11.

From ¼ sec. cor. I continue N. 89°59' W. on random line bet. secs. 2 and 11.

42.70

A point 30 lks. N. of cor. to secs. 2, 3, 10 and 11 as heretofore described -- Thence, I run N. 89°37' E. on true line bet. secs. 2 and 11.

42.70

¼ sec. cor.

Land, mountainous.

Soil, rocky.

Mountainous land, 69.20 chs.

From the cor. to secs. 2, 3, 10, 11.
Test on random line bet. secs. 3 and 10.

34.50

A point 5 lks. N. of old ¼ sec. cor. which I destroy and continue along line.

39.22

Set temp. ¼ sec. cor.

74.80

Witness cor. 40 lks. E. of true place for cor. of secs. 3, 4, 9 and 10 marked and witnessed as described by the surv. gen'l.

RE-SURVEY SUBDIVISION OF T.2 N., R.14 W., S.B.M.

- 75.20 Place for sec. cor. Thence, I run East on true line bet. secs. 3 and 10. Along southerly slope of rough mountain counting distance from true cor.
- 37.60 The place for $\frac{1}{4}$ sec. cor. falling on steep slide I establish witness cor. 100 lks. west Set a rock 18x12x8 ins. 12 ins. in ground for witness cor. to $\frac{1}{4}$ sec. cor. marked W.C. & S.G.F.R. on N. face; raise a mound of rocks 2 ft. base, $1\frac{1}{2}$ ft. high N. of cor. Pits impracticable.
- 75.20 Cor. to secs. 2, 3, 10 and 11. Land, mountainous. Soil, rocky. Mountainous land, 75.20 chs.

May 11, 1902

-
- From the cor. to secs. 4, 5, 8 and 9, I run N. 0°41' E. on random line bet. secs. 4 and 5.
- 40.64 A point 48 lks. E. of $\frac{1}{4}$ sec. cor. which is a post set firmly in the ground marked and witnessed as described by the surveyor general -- Thence, I run South on true line bet. secs. 4 and 5.
- 12.00 Top of ridge 300 feet above cor. course E. and W. Descend.
- 40.64 Cor. to secs. 4, 5, 8 and 9. From $\frac{1}{4}$ sec. cor. I run N. 0°56' E. on random line bet. secs. 4 and 5.
- 40.20 To a point 35 lks. E. of cor. to secs. 4 and 5, Thence I run S. 0°26' W. on true line bet. secs. 4 and 5.
- 4.00 Dry bed of Little Tajunga Creek 40 lks. wide, course W.
- 8.50 Road, course E. & W. Ascend rough spur.
- 23.00 Top of spur, course E. and W.
- 32.00 Gulch, course N.W. Ascend.
- 40.20 $\frac{1}{4}$ sec. cor. Land, mountainous. Soil, 4th rate. No timber. Mountainous Land, 80.84 chs.

May 12, 1902.

-
- From cor. to secs. 4, 5, 8 and 9. S. 89°37' E. on random line bet. secs. 4 and 9
- 40.25 A point 27 lks. S. of $\frac{1}{4}$ sec. cor. An oak post marked and witnessed as described by the surveyor general, Thence, I run

RE-SURVEY SUBDIVISION T. 2 N., R. 14 W., S. 3. N.

West on true line bet. secs. 4 and 9.

Over a succession of sharp spurs along southerly slope of rough mountain.

6.50 Cross gulch c. S.
18.70 Summit of spur c. N. & S.
23.00 Gulch, course S.
40.25 Cor. to secs. 4, 5, 8 and 9.
From $\frac{1}{4}$ sec. cor. I run
S. 89°47' E. on random line between secs. 4 and 9.
39.40 To a point 15 lks. S. of place for cor. to secs. 3, 4, 9 & 10,
Thence, I run
West on true line bet. secs. 4 and 9.
5.00 Top of spur, course N. and S.
16.00 Gulch 20 lks. wide, course S.
35.00 Top of spur, descending S.
39.40 $\frac{1}{4}$ sec. cor.
Land, mountainous.
Soil, rocky.
No timber.
Mountainous land, 79.65 chs.

May 12, 1902.