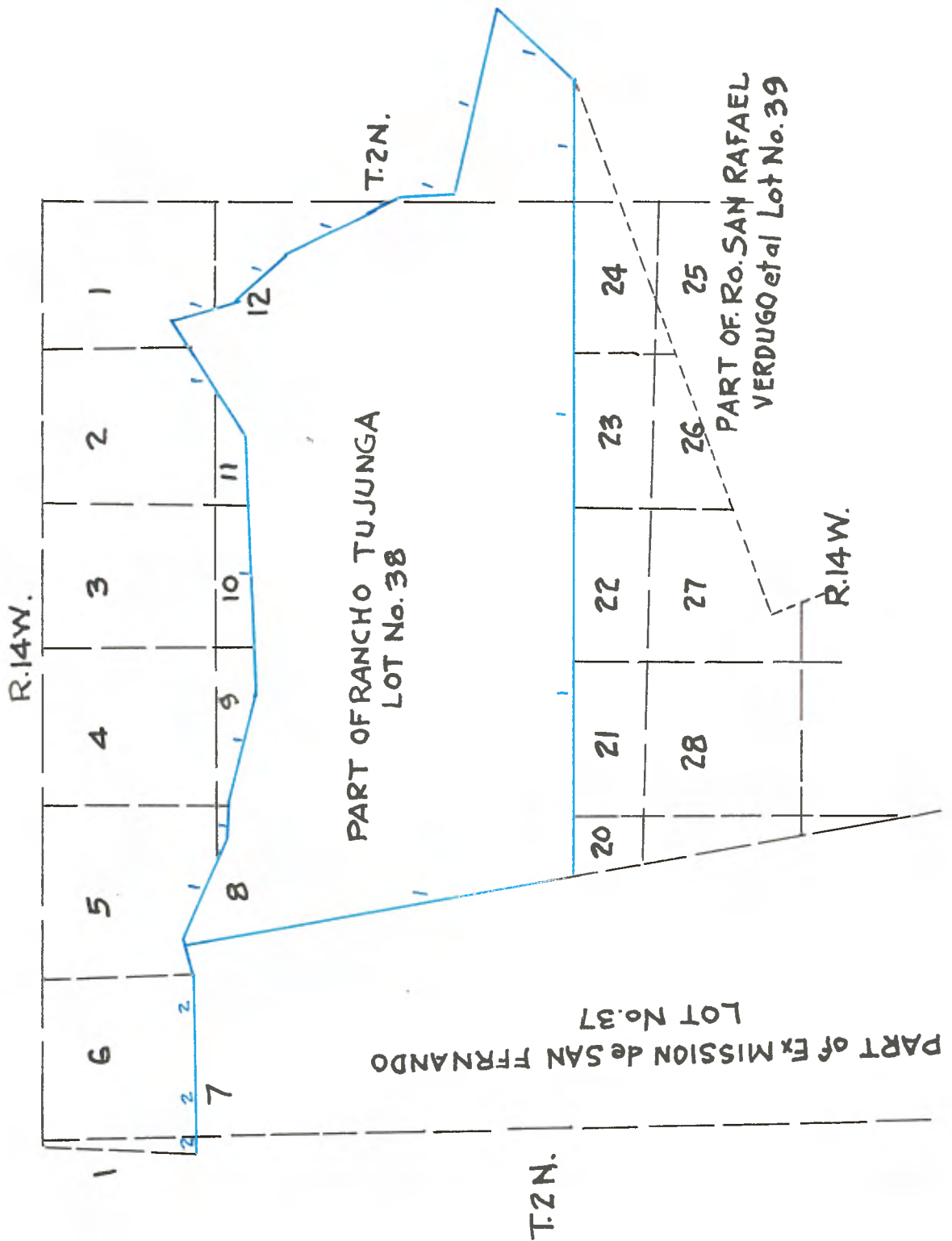


Copied from Photographic Copies
 furnished by
 U.S. General Land Office
 Washington, D.C.



Tujunga

Field Notes of the final survey of the rancho, called Tujunga, situated in the County of Los Angeles, State of California, by Henry Hancock, Deputy Surveyor, in conformity with instructions, bearing date Sept. 1st, 1858.

Variation 13° 30' E.

Commencing at Sta. No. 3 of the Survey of the El Mission of the Fernando, which is a post, in mound at the mouth of a Canada on the South Base of the San Fernando Mountain, from which a Sycamore 10 ins. diam. bears N 13½ W, dist. 385 lks., Thence along the base of the mountain to Station;

S 42½	E	36.50	Set Stake
S 56½	E	35.00	Set stake
S 78	E	25.00	Set stake
S 70½	E	25.00	Set stake
S 76½	E	20.00	To a point on the south base of mountain opposite to which the Tujunga Valley ranging East and West, is about 50 chs. wide. Set stake. Thence, Set stake.
East		135.00	Set stake.
N 57½	E	77.00	To a Sycamore 6 ins. diam. and marked T 8
S 11¼	E	11.00	To Tujunga Creek, 20 lks. wide, course W.
		33.00	To Sta. No. 9. Set stake.
S 47½	E	7.00	Across dry arroyo, 30 lks. wide, course W.
		37.00	To Sta. No. 10, Set stake.
S 22	E	98.00	Set stake.
S 80	E	96.00	To Sta. No. 12, and set a gray granite rock 18 ins. long, 12 ins. wide, and 10 ins. thick, on the S.W. slope of a high mountain. Thence,
S 39	W	52.00	To a live oak 24 ins. diam. marked T No. 13, from which another live oak 24 ins. diam. bears N 35¼ E. dist. 3.00 chs. Station on the Portezuelo between Canada Tujunga and Atras de las Burdugos; Thence over the Northern Slope of the Burdugo Mountain;
S 89	W	420.00	To Sta. No. 14, or S.W. corner of the Ranch and raised a mound with post and pits, as per instructions, marked T 14, on the east boundary of the Ex Mission de San Fernando. Thence retracing the boundary of Said Ex Mission.
N 8 W		41.50	Cross Road leading to the Ranch house, course N 56° E.
		122.00	Leave low hills, ranging N.W. and S.E.
		152.00	To a point from which the Ranch house of Tujunga bears N 45½° E.
		204.50	To a point from which the Ranch house bears S 38° E.
		234.00	To the N.W. corner or place of beginning.

REMARKS

The southern boundary falls on the North face of the Burdugo Mountain and was ascertained by running a traverse.

The S.E. cor. falls in what is called the Puerta Suelo of Tujunga, a narrow place in the Canada, on the summit of the same and where the Canada pitches to the eastward, forming the Canada, called Canada Atras de las Burdugoes.

The S.W. corner is at the north base of the western terminus of the Burdugo Mountain.

From the N.W. corner or Sta. No. 3 of the Ex Mission San Fernando.

I measure S 81° W, 10.50 chs.

Thence N 82½° W, 21.50 chs.

Thence N 74½° W, 64. chs. and

Thence S 82° W, 3.76 chs. and

intersected the 14th Range line West of the San Bernardino Meridian 1.77 chs. North of the ¼ sec. cor. between Sections 1, and 6, Tp. No. 2 North,

for connection with the lines of the Public Surveys, as none had been run to cut the land embraced in this Ranch.

General Description

This Ranch consists principally of a broad Canada between the Tujunga or San Fernando mountains, and the Burdugo Mountain on the South and is well timbered with different species of Oak.

The soil is generally Second Rate.

The Water is confined to that of the arroyo of Tujunga, in wet seasons, affording water for irrigation and a small spring in a Ravine a short distance N.W. of the house.

A list of the persons who assisted in running, measuring and marking the lines and corners described in the foregoing notes, exhibiting the respective capacities in which they acted.

Ebenezer Hadley, Compassman
John Warren, Chainman
Benj. Virgin, Chainman
Evert C. Evertson, Axeman
Romolo Pico, Flagman

State of California,
County of Los Angeles.

We hereby certify that we assisted Henry Hancock, Deputy Surveyor, in the running, measuring and marking the lines, boundaries and corners of the Rancho of Tujunga, situated in the County and State aforesaid, and that the final survey of said Rancho has been in all respects well and faithfully executed to the best of our knowledge and belief, and the boundary monuments together with the monuments at the intersections of the lines of said Rancho, with the lines of the Public Surveyed lands, planted according to the instructions furnished by the Surveyor General.

Ebenezer Hadley, Compassman
John Warren, Chainman
Benj. Virgin, Chainman
Evert C. Evertson, Axeman
Romolo Pico, Flagman