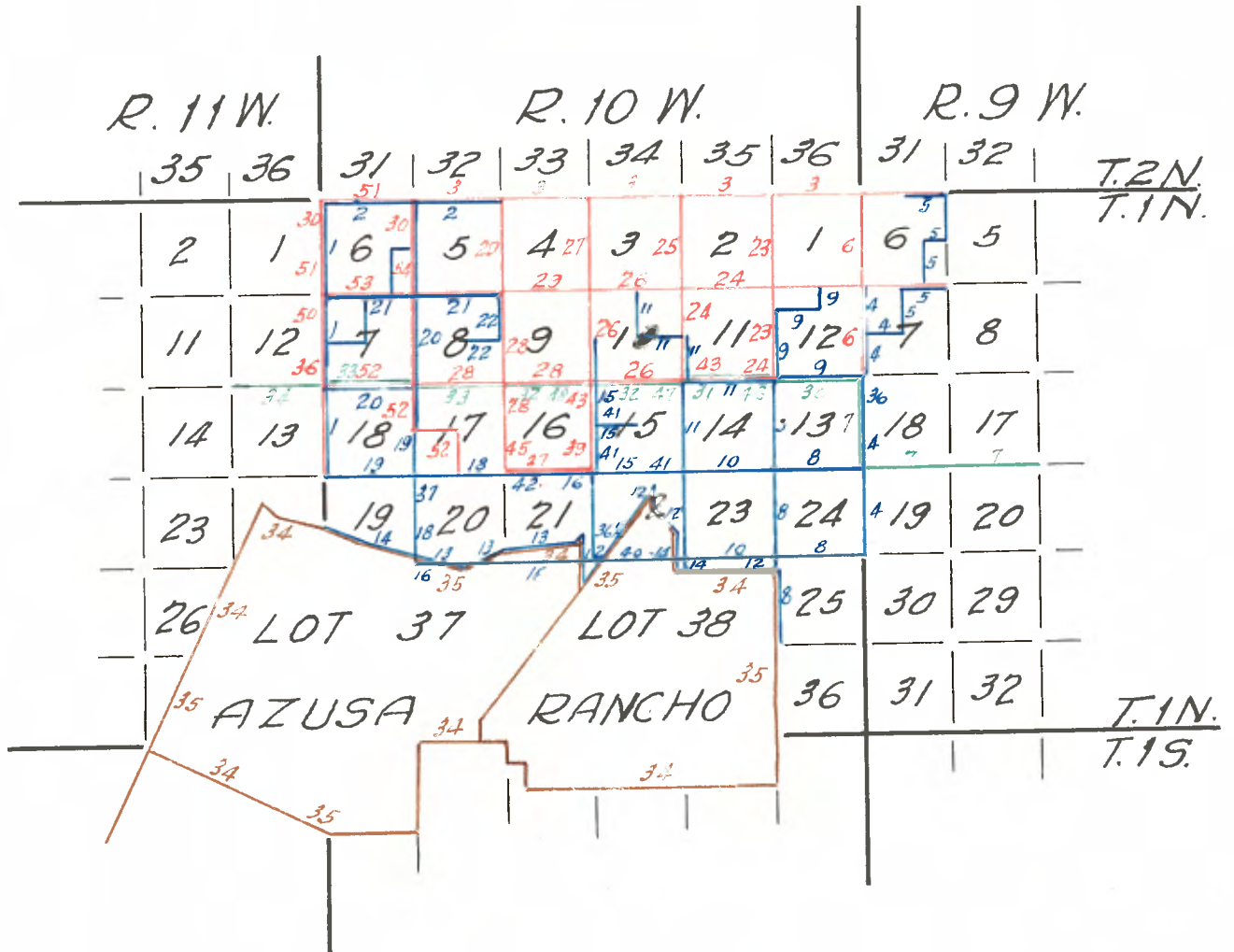


Copied from Photographic Copies
 furnished by
 U. S. General Land Office
 Washington, D.C.



Blue Lines Show Lines Run by W.H. Norway 1875
 Vermilion Lines Show Lines Run by G.W. Pearson 1884
 Brown Lines Show Lines Run by H. Hancock 1858
 Green Lines Show Lines Run by H. Cutting 1890

Field Notes

Township 1 North, Range 10 West, Sec. 18, 19, 20, 21, 22, 23, 24

W.B.T. J.N., H.10 W.B.B.M.

From the established cor. to sec. 18, 19, 20, 21, 22, 23, 24 on the W.

boundary of this Township (No notes of this corner)

I run

North on N. boundary of sec. 18.

Ascending on high hills.

Var. 14th E.

40.00 Set redwood post 3 x 3 ins., 3 $\frac{1}{2}$ ft. long in rock md. as inst., for $\frac{1}{2}$ sec. cor.

50.00 Summit of ridge C. E. and N. and descend.

70.00 J. N. Butler's house about 3.00 chs. E.

71.50 Cross saw pit creek 10 lks. wide co. W.

80.00 Set oak post 4 x 4 ins., 3 $\frac{1}{2}$ ft. long in md of rock as inst. on side hill, facing S. for cor. to sec. 7, 12, 13, 18, 19, 20, 21, 22, 23, 24, 25, 26, 27, 28, 29, 30, 31, 32, 33, 34, 35, 36, 37, 38, 39, 40, 41, 42, 43, 44, 45, 46, 47, 48, 49, 50, 51, 52, 53, 54, 55, 56, 57, 58, 59, 60, 61, 62, 63, 64, 65, 66, 67, 68, 69, 70, 71, 72, 73, 74, 75, 76, 77, 78, 79, 80, 81, 82, 83, 84, 85, 86, 87, 88, 89, 90, 91, 92, 93, 94, 95, 96, 97, 98, 99, 100.

A gray granite rock 4 ft. cube bears N. 86° E. 22 lks. dist.

Land rough, lat and rate. N. 7, S. 7 3d rate.

North on west boundary of sec. 7.

Ascending high hills.

Var. 14th E.

40.00 Set oak post 3 x 3 ins., 3 $\frac{1}{2}$ ft. long, in md of earth and pits as inst. for $\frac{1}{2}$ sec. cor.

80.00 Set redwood post 4 x 4 ins., 3 $\frac{1}{2}$ ft. long, in md of rocks on side hill, facing N. as inst. for cor. to sec. 1, 6, 7, 12, 13, 18, 19, 20, 21, 22, 23, 24, 25, 26, 27, 28, 29, 30, 31, 32, 33, 34, 35, 36, 37, 38, 39, 40, 41, 42, 43, 44, 45, 46, 47, 48, 49, 50, 51, 52, 53, 54, 55, 56, 57, 58, 59, 60, 61, 62, 63, 64, 65, 66, 67, 68, 69, 70, 71, 72, 73, 74, 75, 76, 77, 78, 79, 80, 81, 82, 83, 84, 85, 86, 87, 88, 89, 90, 91, 92, 93, 94, 95, 96, 97, 98, 99, 100.

Land rough, soil mostly red rate. Live oak and redwood poles, underbrush common.

North on N. boundary of sec. 6.

Var. 14th E.

26.50 Cross gulch 50 lks. wide, co. SE.

40.00 Set oak post 4 x 4 ins., 3 ft. long, in md. of earth, and pits as inst. for $\frac{1}{2}$ sec. cor., thence ascend abrupt side hill.

80.00 Set spruce post 6 x 6 ins., 4 ft. long, in md of rocks on SE. slope of high mt. as inst. for cor. to Tps. 1 & 2 N., R. 10 and 11 W.

Land rough along line, timber oak and fir in corners, end and 3rd rate soil. The N. bound of this Tp. can only be run part way. I therefore run it a true line West.

Volume 162-13

November 24, 1875.

W. H. NORWAY

26.00

Summit of divide bears North 10° East and South 10° West and descend.

Ascend.

Var. 14° 29' E.

South 89° 52' West on a true line between sections 1 and 36. I run from the corner to Township 1 and 2 North, Ranges 9 and 10 West, 89° 52' West.

The correction for the true line will therefore be 19 1/2 links North and 1.33 chains East per mile, and the true course will be South 97 1/2 links South of corner to Twp. 1 and 2 North, Ranges 9 and 10 West.

The variation of my compass being 14° 29' East, and find the township line to be 5 miles 1.33 chains long and the falling to be 97 1/2 links South of corner to Twp. 1 and 2 North, Ranges 9 and 10 West.

and 50 chains.

West, setting temporary half mile and mile corners at each 40 East on a random line between Townships 1 and 2 North, Range 10 I run

and I notch on the west edge, in mound of rocks, line, finally set in the ground, marked with 5 notches on the north boundary of township which is a granite rock 24 x 16 x 9 from the established corner to sections 5, 6, 31 and 32 on the

M. H. NORWAY.

November 24, 1875.

Volume 162-13

Township 1 N., R. 10 W. is rough and broken mts. with some timber in Canada but too rough to make the timber available.

Land rough, and xite, some timber.

I close the survey in this direction.

from this point.

The land is too rough and worthless to run further E. or S.

Set granite rock 10 x 16 x 20 ins. in md. of rocks, a steep side hill facing S. as inst., for 1/2 sec. cor.

40.00

Along on S. slope of high mt.

Var. 14° E.

East on true line on N. boundary of sec. 5.

Land rough with timber in Canada, oak and scattering fir and pine.

Set granite rock 10 x 16 x 24 ins. in md. of rocks as inst. for cor. to sec. 5, 6, 31 and 32.

80.00

1.25 chs. dist.

A Gray granite rock 10 ft. cube bears S. 70° E.

Set reduced post 3 x 3 ins. 3 ft. long, in md of rocks as inst., for 1/2 sec. cor. from which

40.00

Cross dry gulch near head 20 lks. wide, co. BK. thence ascend.

28.50

Descending.

Var. 14° E.

East on a true line on N. boundary of sec. 6.

M. H. NORWAY.

Apr. 14, 29, E.

South 89° 52' west on a true line between section 5 and 32.

Land mountainous, soil third rate. Timber none. Dense undergrowth of chaparral.

Set granite stone 14 x 11 x 5 ins. in the ground for corner to sections 4, 5, 32 and 33, marked with 4 notches on the east and 2 notches on the west edges, and raised mound of stone along side. Pits impracticable.

Set granite stone 14 x 11 x 5 ins. in the ground for corner to sections 4, 5, 32 and 33, marked with 4 notches on the east and 2 notches on the west edges, and raised mound of stone along side. Pits impracticable.

50.00

50.60

Summit of ridge bears northwest and southeast and descend. Set sandstone 15 x 9 x 6 ins. in the ground for corner to sections 4, 5, 32 and 33, marked with 4 notches on the east and 2 notches on the west edges, and raised mound of stone along side. Pits impracticable.

Set granite stone 14 x 11 x 5 ins. in the ground for corner to sections 4, 5, 32 and 33, marked with 4 notches on the east and 2 notches on the west edges, and raised mound of stone along side. Pits impracticable.

40.00

10.00

Apr. 14, 29, E.

South 89° 52' west on a true line between section 4 and 33.

Land mountainous, soil third rate. Timber none. Dense undergrowth of chaparral.

Set granite stone 18 x 11 x 5 ins. in the ground for corner to sections 3, 4, 33 and 34, marked with 2 notches on the east and west edges, and raised mound of stone along side. Pits impracticable.

Set granite stone 18 x 11 x 5 ins. in the ground for corner to sections 3, 4, 33 and 34, marked with 2 notches on the east and west edges, and raised mound of stone along side. Pits impracticable.

50.00

52.00

41.00

Apr. 14, 29, E.

South 89° 52' west in a true line between sections 3 and 34.

Land mountainous, soil third rate. Timber none. Dense undergrowth of chaparral.

Set granite stone 22 x 13 x 9 ins. in the ground for corner to sections 2, 3, 34 and 35, marked with 2 notches on the east and 4 notches on the west edges, and raised mound of stone along side. Pits impracticable.

Set granite stone 22 x 13 x 9 ins. in the ground for corner to sections 2, 3, 34 and 35, marked with 2 notches on the east and 4 notches on the west edges, and raised mound of stone along side. Pits impracticable.

50.00

43.20

Apr. 14, 29, E.

South 89° 52' west on a true line between sections 2 and 35.

Land mountainous, soil third rate. Timber none. Dense undergrowth of chaparral.

Set granite stone 14 x 9 x 6 ins. in the ground for corner to sections 1, 2, 35 and 36, marked with 1 notch on the east and 5 notches on the west edges, and raised mound of stone along side. Pits impracticable.

Set granite stone 14 x 9 x 6 ins. in the ground for corner to sections 1, 2, 35 and 36, marked with 1 notch on the east and 5 notches on the west edges, and raised mound of stone along side. Pits impracticable.

50.00

66.00

March 31, 1884.

Set granite stone 19 x 11 x 10 ins. in the ground for corner to sections 1, 2, 35 and 36, marked with 1 notch on the east and 5 notches on the west edges, and raised mound of stone along side. Pits impracticable.

Set granite stone 19 x 11 x 10 ins. in the ground for corner to sections 1, 2, 35 and 36, marked with 1 notch on the east and 5 notches on the west edges, and raised mound of stone along side. Pits impracticable.

40.00

Summit of divide bears north and south and descend, along side of ridge, sloping west and south.

After different sections, being unable to find old corner, I set

standstone 14 x 9 x 8 ins., 9 in. in the ground for 1/2 section corner, marked 4 on the north face and raised mound of stone

along side. The corner to sections 5, 6, 31 and 32. Land mountainous. Soil third rate. Timber none. Dense undergrowth.

Volume 215-B

April 2, 1884
O. W. Pearson

E. H. T. I. N. B. 10 N. S. B. M.

From the establish cor. to sec. 24, 25, 19 and 30 on the E. boundary of this tp. (No notes of this corner) I run

North on the E. boundary of sec. 24.

Ascending over high hills.

A spring 75 lbs. E. of line.

Cross dry gulch 50 lbs. wide, co. S. N. at the junction of

another gulch coming from the N. W. Set oak post 3 x 3 ins. 3 ft. long, in wd. of earth and pits

as last, for 1/2 sec. cor., from which

A redwood tree 6 ins. dia. bears N. 42° E. 18 lbs. dist.

Summit of high spur co. SW. and NE. and descend.

Set oak post 4 x 4 ins. 3/4 ft. long, in wd. of rocks as last.

On steep side hill, facing N. for cor. to sec. 13, 18, 19, 24.

Land high, broken etc. and 3d. rate soil. Timber live oak, some fir.

North on E. boundary of sec. 13.

Descend.

The point for 1/2 sec. cor. falling in deep gulch co. W. not

suitable place to build monument I continue and set

Set oak 3 x 3 ins., 3 ft. long in wd. of rocks as last, for

witness to 1/2 sec. cor., from which

An oak tree 10 ins. dia., bears S. 10° W. 1.07 obs. dist.

Summit of hill and descend.

Enter valley of San Gabriel River.

Set spruce post 4 x 4 ins. 3/4 ft. long in wd. of rocks as

last, for cor. to sec. 7, 12, 13 and 18, from which

A live oak 16 ins. dia. bears S. 32° W. 1.95 obs. dist.

A red oak 18 ins. dia. bears S. 44° E. 3.23 obs. dist.

Land rough, and rate. Timber live oak and spruce.

November 25, 1875.

North on E. boundary of sec. 12.

Var. 147° E.

7.00
16.50
32.50
38.00
40.00
48.50
60.00

40.00
42.50
76.50
78.50
80.00

4.50
8.50
40.00
71.00
80.00

13.00
41.33
81.33

Cross San Gabriel River 50 lbs. wide, co. N. Leave valley or river bottom and ascend steep mt. side. Summit of ridge co. E. & W. and descend. Cross short gulch co. SE. and ascend. Set oak post 3 x 3 ins. 3/4 ft. long, in wd. of rocks as last. for 1/2 sec. cor. on ridge facing E. Cross existing main head cor. SE. and ascend. Not being able to run further N. or E. in this direction, I set an oak post 3 x 3 ins., 3/4 ft. long, in wd. of rocks as last, for 1/2 sec. cor. and return S. to 1/2 sec. cor. bet. sec. 18 and 7, bet. N. 9 and 10 and run an offset line through T. I N. N. 9 W. E. through sec. 7 on 1/2 sec.

Var. 147° E.

20.00
29.50
40.00
6.64
21.50
22.10
34.00
40.00
6.50
12.34
13.50
25.50
40.00
5.50
21.50
31.00
40.00
14.00
20.00
13.00
15.00
40.00
28.00
35.50

Enter Canada of San Gabriel co. SW. Leave valley for Canada and ascend. The point for $\frac{1}{2}$ sec. cor. center of sec. 7 falling on steep side not suitable place to build a monument, I set a sycamore post 4 x 4 ins., 3 ft. long, in md. of rocks as inst., 6.64 chs. N. For witness to $\frac{1}{2}$ sec. center of sec. 7, from which a sycamore tree 12 ins. dia. bears S. 44° W. 86 lks. dist. Thence North through center of sec. 7 on $\frac{1}{2}$ sec. line. Var. 14° E. Witness post leave mt. and enter Canada San Gabriel. To water in San Gabriel River, co. S.W. Over same. Over gulch and ascend. Cross gulch and ascend. Set sycamore post 3 x 3 ins. 3 ft. long in md. of rocks on steep side hill, facing N. as inst. for cor. to sec. 5, 6, 7 and 8. Land and 3d rate. Timber live oak, sycamore and cottonwood. The land is too rough to run N. or E. from this point. I run West 20.00 chs. and set a sycamore post 3 x 3 ins., 3 ft. long in md. of rocks as inst., for $\frac{1}{8}$ sec. cor. from which a sycamore tree 18 ins. dia. bears N. 3 3/4° E. 1.45 chs. dist. North through E. $\frac{1}{2}$ of sec. cor. 1/8 line. Var. 13 3/4° E. Leave hill and ascend point of hill. Leave hill and enter valley co. K. & W. Leave valley and ascend. Set oak post 3 x 3 ins. 3 ft. long in md. of rocks on side hill, facing N.E. as inst. for 1/8 sec. cor., thence East on $\frac{1}{2}$ sec. cor. in sec. 6. Var. 14° E. Leave hill and enter river bottom cor. NW. and SE. Set sycamore post 3 x 3 ins., 3 ft. long in md. of rocks on right bank of San Gabriel River as inst. for $\frac{1}{2}$ sec. cor. bet. sec. 5 and 6 from which a sycamore tree 24 ins. dia. bears S. 85° W. 2.13 chs. dist. A live oak 24 ins. dia. bears N. 15° W. 2.13 chs. dist. Land rough, timber oak, sycamore and cottonwood. North bet. sec. 5 and 6, from $\frac{1}{2}$ sec. cor. Var. 14° E. Cross San Gabriel River 50 lks. wide, co. SE. Var. 14° E. Leave valley and ascend. Set an oak post 4 x 4 ins. 3 ft. long, in md. of rocks as inst. for cor. to sec. 5, 6, 7 and 8 on N. boundary of Tp. Land rough, timber sycamore and cottonwood. In order to establish the cor. to Tps. 1 and 2 N., N. 9 and 10 N., I run West on N. boundary of sec. 6. Var. 14° E. Enter valley of San Gabriel River co. N. & SE. San Gabriel River 50 lks. wide, course SE. 35.50

February 11, 1884
G. H. Pearson

North between sections 1 and 6.
 Descend.
 Having 50 lks. wide, course west and ascend.
 Set granite stone 15 x 11 x 7 ins., 8 ins. in the ground for
 section corner, marked 7 on west face and raised a mound of
 stone alongside. Pits impracticable.
 Top of spur bears east and descend.
 Set granite stone 16 x 12 x 9 ins., 11 ins. in the ground for
 corner to sections 1, 6, 11 and 36, the 1 and 2 North, ranges
 9 and 10 west, marked with 6 notches on the north, south, east
 and west edges, and raised mound of stone alongside.
 Pits impracticable.
 On north slope of spur.
 Land mountainous. Soil third rate. Timber pine and oak in the
 ravines. Dense undergrowth of chaparral brush.

26.00
40.00
49.50
50.00

North between sections 7 and 12, retracing 60 chains.
 I am
 Rather San Gabriel Canon, course south 80° west
 San Gabriel River 70 links wide, course south 80° west.
 Leave canon course south 80° west and ascend.
 Top of spur bears east and descend.
 After different search being unable to find old corner I set
 granite stone 12 x 9 x 8 ins., 7 ins. in the ground for
 section corner, marked 7 on west face and raised a mound of
 stone alongside. Pits impracticable.
 Having 50 links wide, course southwest and ascend.
 After different search being unable to find witness corner I
 continued the line north and at
 Top of spur bears west and descend.
 Set granite stone 15 x 9 x 8 ins., 10 ins. in the ground for
 corner to sections 1, 6, 7 and 12, marked with 5 notches on
 south and 1 notch on north edges and raised a mound of stone
 alongside. Pits impracticable.
 Land mountainous. Soil, second rate. Timber, pine and oak in
 canon and ravines. Dense undergrowth of chaparral brush.

2.50
7.00
17.00
32.00
40.00
45.00
60.00
77.00
80.00

For the established corner to sections 7, 12, 13 and 18 on
 the west boundary of township which is a well preserved post
 plainly marked T. 1 N 8 7 on northeast,
 R 9 W. S. 18 on southeast,
 H. 10 W 8 13 on southwest and 8 12 on northwest
 faces, with 2 notches on north and 4 notches on south edges, with
 mound of stone around post, from which bears
 An oak 16 ins. dia. south 12° west, 1.95 chs. dist.
 An oak 18 ins. dia. south 45° east 3.25 chs. dist.

W. H. T. J. M. R. 9 N. H. H. M.

November 26, 1875
W. H. Norway

To the foot of large rocky bluff finding it impracticable to
 run further on this line or get back to the range line I set
 a square post 4 x 4 ins., 5 ft. long in sd. of rock as last
 for witness to 7 sec. cor., from which
 An alder tree 6 ins. dia. bears N. 46° E. 27 lks. dist.
 Land rough, 2d rate. Timber, oak, sycamore, alder and cotton-
 wood scattering.

37.00

September 4: At 7h 00m. a.m. I set off the 10' north on the lat. arc; 64' N. on the decl. arc and determine a true meridian with the solar at the corner to sections 16, 17, 20 and 21, - - - - I run north 50' west on a random line between sections 17 and 20, 18 and 19. After diligent search, being unable to find any trace of old corner, I set temporary corners at every 40 and 80 chains and at 160.94 chains intersect range line, between Tps. 1 N., 9 and 10 N. at a point 42 links north of corner to sections 13, 18, 19 and 24, where I found a decayed post, with marks partly obliterated, in a mound of stone. I destroyed old post and in the place, set a square, hollow iron post, filled with cement etc., 3 feet long, with sides 4 inches wide, at the top, increasing to 12 inches wide at the bottom, 12 inches in the ground, marked S O F N 12 I N 18 on northeast, N 9 N 8 19 on southeast, N 10 N 8 24 on southwest, and S 13 on northwest trace, and raised a mound of stone, covered with earth, 3 feet base, 1 1/2 feet high, around post. Thomas I run south 59' east on a true line between sections 18 and 19. Descend. Having 5 links wide, 150 feet below section corner, course south 59' east. Ascend.

September 5: At 7h 00m. a.m. I set off the 10' N., on the lat. arc; 64' N. on the decl. arc and determine a true meridian with the solar at the corner to sections 13, 18, 19 and 24, previously described. From the corner to sections 13, 18, 19 and 24 on range line between Tps. 1 N., 9 and 10 N., previously described, I run north on a random line between sections 13 and 18. To a point 14 links west of old stone mound, from which bears a line out 14 ins. dia. south 100 west, 107 lks. dist., marked N O F S N 1 being unable to find any trace of quarter section post, to re-established corner, I set a granite stone, 24 x 17 x 9 inches, 18 inches in the ground, marked N O F on west face, S O F N on east face and rebuilt stone mound, 1 1/2 feet high 2 feet base, west of corner. This impracticable. Thomas I run south 0' 11' west on a true line between sections 13 and 18. Descend, counting distances from point for quarter section corner. Having 10 links wide, 90 feet below quarter section corner, course west. The true point for quarter section falls in this gulch, which is not a suitable place to mark. Ascend. Trail to Olenok, bears east and west. The corner to sections 13, 18, 19 and 24. Counting distances from the true point for quarter section corner, north on a random line. To a point 15 links east of corner to sections 7, 12, 13 and 18, which is a square post, marked and witnessed as described by the Surveyor General with the exception of the bearing trees, which have been cut down and destroyed. To re-establish corner and to mark corner No. 13 on the boundary of the San Gabriel Forest Reservation, in place of the square post I set a square, hollow iron post, filled with cement, etc., 3 feet long, the sides 4 inches wide at the top, increasing to 12 inches wide at the bottom, 12 inches in the ground, marked T I N 8 7 on northeast, N 9 N 8 18 on southeast N 10 N 8 13 on southwest and S O F N 12 on northwest trace; and rebuilt mound of stone, 1 1/2 feet high, 4 feet base around post. Thomas I run

40.27

40.52

45

43.02

19.88

South of 13 east on a true line between sections 13 and 18. Through Canada San Gabriel, course southeast. Leave Canada San Gabriel, and ascend west slope of mountain. Top of spur, 80 feet above Canada, bears east and west. Descend. To witness corner to quarter section corner. To true point for quarter section corner. Land mountainous. Soil third rate. Scattered sycamore and oak timber. Dense undergrowth of chaparral. Mountainous land, 50.27 chains. Volume 0-8
September 5, 1896.
Lewis H. Cutting.

I. I. N., N. 10 W., S. N. W.

North between sec. 25 and 26. Var. 14th E.

Set an oak post 3 x 3 ins., 3 ft. long in md. of tree as first. On steep side hill, facing N. for cor. to sec. 23, 24, 25, 26. Land mostly level. Lat rate.

East on random line bet. sec. 24, 25.

Along foot of hills. Get post for temp. 1/2 sec. cor. Cross a dry gulch 50 lks. wide, 60. 5M. at junction with another gulch coming from NW. A house 50 lks. N. of line. Int. N. bound of Tp. 10 lks. S. of cor. to sec. 24 and 25, from this cor. I run S. 89° 56' W. on true line bet. sec. 24 and 25. Var. 14th E.

Get an oak post 3 x 3 ins., 3 ft. long in md. of rocks on side hill facing E. as first. For 1/2 sec. cor. The cor. to sec. 23, 24, 25, 26. Land mostly lat rate N. of broken, 2nd rate.

North bet. sec. 23 and 24. Ascending abrupt mt. Get redwood post 3 x 3 ins., 3 ft. long in md. of rocks as first. Var. 14th E.

Summit of spur 60. 2W. and E. Valley of San Gabriel. San Gabriel River 50 lks. wide, 60. NW. San Gabriel River 50 lks. wide, 60. SE. Under field cor. NW. and SE. Set sycamore post 4 x 4 ins., 3 ft. long in large md. of rocks as first. For cor. to sec. 13, 14, 23 and 24, in center of small field a house bears S. 64° W. about 7 chs. dist. Land rough with scattering timber and 3d rate soil.

November 27, 1875.

8.00 Leave valley of San Gabriel and ascend along N. slope of mt. Var. 14th E.

40.00 Set post for temp. 1/2 sec. cor. Int. N. bound of Tp. 10 lks. N. of cor. to sec. 13 and 24, from this cor. I run N. 89° 54' W. on true line bet. sec. 13 and 24. Var. 14th E.

50.00 Summit of spur 60. 2W. and E. Valley of San Gabriel. San Gabriel River 50 lks. wide, 60. NW. San Gabriel River 50 lks. wide, 60. SE. Under field cor. NW. and SE. Set sycamore post 4 x 4 ins., 3 ft. long in large md. of rocks as first. For cor. to sec. 13, 14, 23 and 24, in center of small field a house bears S. 64° W. about 7 chs. dist. Land rough with scattering timber and 3d rate soil.

60.00

61.50

72.50

76.00

80.00

80.10

80.25

80.10

80.00

40.05

40.00

50.00

60.00

61.50

72.50

76.00

80.00