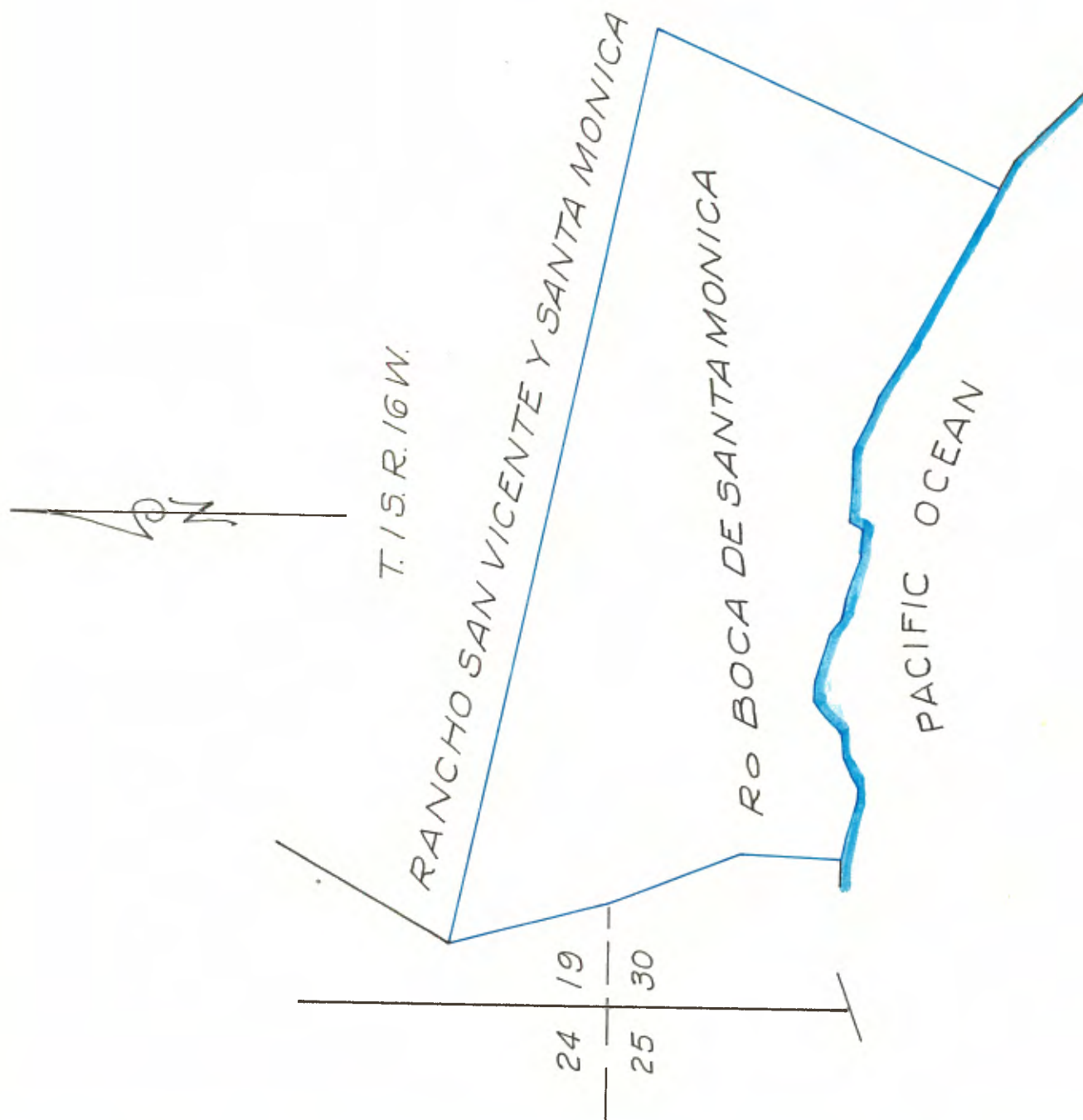


Field Notes

of
The final Survey of the
Rancho Boca de Santa Monica
Ysidro Reyes and the heirs of Francisco Marquez
Confirmees

By
Wm. Minto, Deputy Surveyor
Under his instructions of December 15, 1880
Survey commenced April 7, 1881
Survey completed April 12, 1881.



Department of the Interior,

OFFICE OF U. S. SURVEYOR-GENERAL,

San Francisco, California.

November 10th. 1924., 190--

I, JOHN PLOVER, U. S. Surveyor-General
for California, do hereby certify that the annexed
photographic copy of the field notes of Rancho Boca de Santa
Monica, as surveyed by Wm. Minto, Deputy Surveyor, under his
instructions of December 15, 1880, is a

true and literal exemplification of said field notes as the same remain on file
and of record in this office.

IN TESTIMONY WHEREOF, I have hereunto set my hand and affixed
my official seal.

John Plover

United States Surveyor-General for CALIFORNIA.

21841b1m8-09

19945

F I E L D N O T E S

O F

The final Survey of the
Rancho Boca de Santa Monica

Ysidro Reyes and the heirs of Francisco Marquez
Confirmees.

B Y

W M . M I N T O , D E P U T Y S U R V E Y O R

Under his instructions of December 15, 1880

Survey commenced April 7, 1881

Survey completed April 12, 1881.

PRELIMINARY OATH OF ASSISTANTS.

We, W. B. Mosher and Harry T. Rogers do solemnly swear that we will faithfully execute the duties of chain carriers; that we will level the chain upon uneven ground, and plumb the tally pins, whether by sticking or dropping the same; that we will report the true distance to all notable objects, and the true length of all lines; that we will assist in measuring to the best of our skill and ability.

HARRY T. ROGERS
W. B. MOSHER.

Subscribed and sworn to before me this 6, day of April 1881.

WM. MINTO,
U. S. Commissioner.

I, M. D. Williams do solemnly swear that I will well and truly perform the duties of Axeman according to instructions given me, and to the best of my skill and ability.

M. D. WILLIAMS.

Subscribed and sworn to before me, this 6, day of April 1881.

WM. MINTO,
U.S. Commissioner.

Boca de Santa Monica Rancho.

I begin at Point Topanga, the initial point of the Thompson survey. The stone mound described in Thompson's notes is standing but the post is gone and in the old mound I set a sand stone 37 X 25 X 4 in marked B. 1. 18 inches deep and made a mound of earth and stone 18 inches high.

From this corner the U.S. Coast Survey Signal Station bears N.15³/₄° W. 26.32 chains distant. The line of the coast to the west bears N.71° W.

This corner stands on the point of a sandy bluff about 10 feet above high water mark. Thence, I run along the coast of the Pacific Ocean.

1 N.71 $\frac{1}{2}$ ° E.

variation 14° 30' E.
 3.00 West side of mouth of Canada
 Topanga
 6.36 Wash of Arroyo Topanga
 11.60 East side of wash
 19.00 East side of Canada
 26.36 To station No. 2.

Thence

2 S.87° E.

15.00 To station No. 3 at point of
 rocks called "Mal Paso"
 Thence

Boca de Santa Monica Rancho.

3	N.57 ³ / ₄ ° E.	4.50	Arch in conglomerate rock 25 links to the left.
		19.50	To station No. 4.
			Thence
4	N.82° E.	12.50	To station No. 5.
			Thence
5	S.78° E.	11.25	Arroyo 25 links wide from the north
		22.50	A high conglomerate rock
		25.00	To station No. 6.
			Thence
6	S.68° E.	40.75	Arroyo Santa Ynez 100 links wide from the north.
		43.00	To station No. 7.
			Thence
7	N.87° E.	7.00	To station No. 8.
			Thence
8	N.69° E.	13.00	To station No. 9.
			Thence
9	N.82° E.	18.00	To station No. 10
			Thence
10	S.82 ¹ / ₂ ° E.	24.00	To station No. 11 on east bank of mouth of Arroyo 40 links wide, from north 30° East.
			Thence
11	S.60° E.	29.80	Arroyo 50 links wide from north 40° East.
		39.00	To station No. 12.
			Thence
12	S.68 ¹ / ₂ ° E.	27.00	To station No. 13
			Thence
13	S.58 ¹ / ₂ ° E.	15.00	To station No. 14.
			Thence

Boca de Santa Monica Rancho.

- 14 S.60³/₄°E. 1.50 Mouth of Arroyo 40 links wide from the north.
- 12.00 To station No. 15.
- Thence
- 15 S.54¹/₂°E. 27.00 West side of Canada Santa Monica.
- 28.20 A bath-house bears north 35¹/₂° E. 20 links in west side of Arroyo Santa Monica
- 33.00 To station No. 16.
- Thence
- 16 S.59¹/₂° E. 6.50 East side of Canada Santa Monica.
- 29.70 To station No. 17, make a stone mound at S.E. corner of the Rancho.
- April 7, 1881.
- Thence
- Along the line of the Rancho San Vicente y Santa Monica
- Variation 14° 30' E.
- 17 N.23° E. 2.00 Ascend bluff
- 3.50 Top of bluff, set a sycamore post 48 X 4 X 4 in marked B. S.M.I,W.C.. 12 in deep for witness corner. Made a mound 24 inches high.
- Thence
- Continue on same course through grain field.
- 44.15 Leave grain field east and west
- 49.20 A road course N.20° west and south 20° East.

Boca de Santa Monica Rancho.

- 50.65 A road course east and west
- 51.00 Set a redwood post 48 X 4 X 2
in 12 inches deep marked B.S.M.
from which an old adobe house
built by Reyes bears S.68½° W.
187 links distant.
- This house stands on the
brow of the Canada Santa Monica.
Along brow of Canada.
Marquez house bears N.17½° W.
- 61.00 A grain field on the right
- 66.15 Marquez house bears N.74° W.
- 70.00 The brow of the Canada bears
north 20° West.
- 78.15 Enter grain field bearing N.W.
- 86.00 Leave grain field bearing N.W.
and S.E.
- 94.00 Enter dense sage brush E. and W.
- 97.65 To brow of Canada Santa Monica
bearing N.56° E. and S.W.
- Descend steep
- 100.20 Arroyo Santa Monica 75 links
wide runs S.W.
- Through dense growth of
sage and sumac in Canada.
- 131.00 Set a sumac stake B.S.M.
- 135.65 Trail, course N.E. and S.W.
- 136.60 Road, course N.E. and S.W.
- 162.70 A road, course N. and S.
- 174.76 A road, course N.E.
- 185.00 Ascend along west side of Canada.
- 190.00 On steep east slope, set a
sycamore post 48 X 4 X 4 in

Boca de Santa Monica Rancho.

12 inches deep marked B.S.M.
 111 from which a sycamore 24
 in. diameter bears S.75½° east,
 374 links Dobson's house bears
 S.78° East 715 links. Made a
 mound 24 in. high with pits
 24 X 24 X 12 in on the line of
 the grant 10 links distant
 from the post. The junction
 of the Canada Yglesia and
 Canada Santa Monica bears
 N.30° E. about 12 chains distant.

(Note 7 This east boundary
 is located as far west as pos-
 sible without leaving out some
 of the old improvements of the
 Reyes and Marquez families.

April 8, 1881.

Thence,

On a random line.

Variation 14° 33' E.

At 478.80 chains to a point
 237 links S. 12° W. from corner
 No.4 (N.W. corner 7 of the
 Thompson survey, at which I
 set an oak post 48 X 3 X 3 in
 marked B.S.M. IV in mound
 with pits.

April 10, 1881.

Thence

On a true line.

Variation 14° 30' E.

18 N.78° W.

S.77° 43' E.

Boca de Santa Monica Rancho.

		25.60	Arroyo Topanga 160 links wide runs S. in deep Canon.
			Over south slope of mountain
		192.00	Arroyo 50 links wide, runs S. in canon.
		302.00	A stream 10 links wide, runs S. in deep ravine.
		374.00	Deep ravine, course south.
		401.00	Summit of ridge, bearing south
		432.38	A creek 10 links wide, runs S. in a rocky canon (Casa Viejo.)
		432.66	A road course north and south
		438.80	Set a post 48 X 3 X 3 in marked B.S. M.
		454.30	Head of ravine, course south
		479.80	To post B.S.M. 111.
			April 11, 1881.
			Then
			from post B.S. M.IV.
19	S. $15\frac{3}{4}^{\circ}$ E.	65.50	Variation $14^{\circ} 30'$ E. To post B.S.M. 5 in a stone mound
			Thence
20	S. $12\frac{3}{4}^{\circ}$ E.	27.60	Variation $14^{\circ} 30'$ E. To post B.S.M. 6. Made a mound 24 in. in height.
			Thence
21	S. $21\frac{1}{4}^{\circ}$ E.	92.43	variation $14^{\circ} 30'$ E. Descending mountain To U.S. coast survey station the post is gone, and I set a stone 14 X 10 X 6 in marked B.S.M.VII in stone mound 24 in.

Boca de Santa Monica Rancho.

22 S. $15\frac{3}{4}^{\circ}$ E.

26.32

high.

Thence

variation $14^{\circ} 30'$ E.

Descending mountain.

To the place of beginning.

April 12, 1881.

Containing

$$6.656\frac{93}{100} \text{ Acres.}$$

and I do further solemnly swear that the foregoing are
the true and original field notes of said survey.

WM. MINTO,

U.S. Deputy Surveyor.

Subscribed by said William Minto, U.S. Deputy Surveyor
and sworn to before me, a U.S. Commissioner in and for
the County of San Francisco in the state of California,
this 5, day of May 1881.

THEO. REICHERT,

U. S. Commissioner.

(SEAL)

U. S. SURVEYOR-GENERAL'S OFFICE.

San Francisco, California.

June 30, 1881.

The foregoing field notes of the final survey of the Rancho Boca de Santa Monica, finally confirmed to Ysidro Reyes the heirs of Francisco Marquez as made by Wm. Minto, U.S. Deputy Surveyor, under the directions of this office, having been examined and the necessary corrections made are hereby approved.

Attest:

THEO. WAGNER,

U.S. Surveyor-General

for California.

(SEAL)

U. S. SURVEYOR-GENERAL'S OFFICE,
San Francisco, California.

I hereby certify that the foregoing transcript has been correctly copied from the original field notes as the same appear of record and on file in this office.

In testimony whereof I have hereunto signed my name officially and caused my seal of office to be affixed this Thirtieth day of June 1881.

THEO. WAGNER,

U.S. Surveyor-General,
for California.

(SEAL)