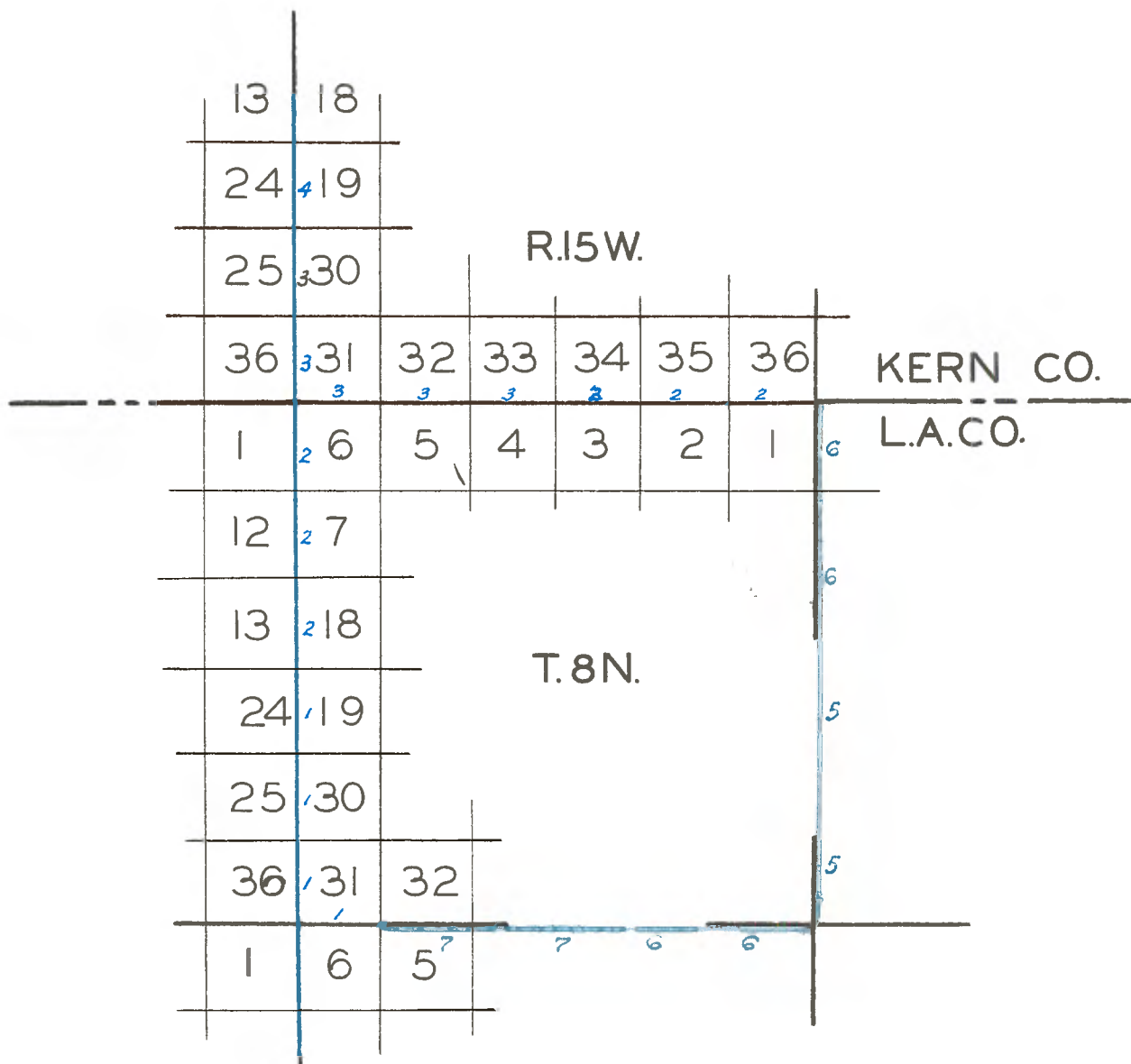


Copied from Photographic Copies
furnished by

U.S. General Land Office
Washington, D. C.



Exterior Lines N. & W. of San Bernardino Meridian.

Chains

West Between Sec. 6 & 31. Var. 14° 12' East.

5.00 To hill bearing N. & S.
37.50 To steep hills.
40.00 Set a post charred and chalked for the $\frac{1}{4}$ sec. corner and raised a mound with trench and pits per instructions.

42.00 Enter scattering Pine.

80.00 Set a post charred, chalked & notched and established the corner to Townships 7 & 8 North, Ranges 15 & 16 West and raised a mound with trench & pits as per instructions from which
A Pine 14 inch diameter bears S. 9° W. 245 lks. distant. This mound is on the north side of a steep ravine 80 ft. deep. It is impossible to run along the West boundary of T. 7 N., R. 15 W. on account of mountains.
Land 2nd rate.

Between Ranges 15 & 16 W., T. 8 North.
From the corner to Tps. 7 & 8 N., Rs. 15 & 16 W. I run North along the East boundary of Sec. 36.
Var. 14° 13' East

20.00 To a ravine. Course N. 45° E.

34.00 Cross the same.
40.00 Set a post charred & chalked for the $\frac{1}{4}$ sec. corner & raised a mound with trench & pits per instructions.
45.00 Leave scattering timber.
77.00 Leave hills for plain.
80.00 Set a post charred, chalked & notched for the corner to Sec. 25, 26, 30 & 31, and raised a mound with trench & pits per instructions.
Land 2nd rate and hilly.

North on the East boundary of Sec. 25.
Var. 14° 13' East

40.00 Set a post charred & chalked for the $\frac{1}{4}$ sec. corner and raised a mound with trench & pits as per instructions.
44.50 To Road to Tejon Fort, course N. 68° 30' W.
80.00 Set a post charred, chalked & notched for the corner to Sec. 24, 25, 19 & 30, and raised a mound with trench & pits as per instructions.
Land 2nd rate & level.

North on the East boundary of Sec. 24.
Var. 14° 13' East

40.00 Set a post charred & chalked for the $\frac{1}{4}$ sec. corner and raised a mound with trench & pits as per instructions.

80.00 Set a post charred, chalked & notched for the corner to Sec. 13, 24, 18 & 19, and raised a mound with trench & pits as per instructions.
Land 2nd rate and level.

Exterior Lines N. & W. of San Bernardino Meridian

North on the East boundary of Sec. 13.

Var. 14° 13' East.

40.00 Set a post charred & chalked for the $\frac{1}{4}$ sec. corner and raised a mound with trench and pits per instructions.

80.00 Set a post charred, chalked & notched for the corner to Sec. 12, 13, 7 & 18 & raised a mound with trench & pits as per instructions.
Land 2nd rate and level.

North on the East boundary of Sec. 12.

Var. 14° 13' East.

40.00 Set a post charred & chalked for the $\frac{1}{4}$ sec. corner and raised a mound with trench & pits per instructions.

80.00 Set a post charred, & chalked & notched for the corner to Sec. 1, 12, 6 & 7 & raised a mound with trench & pits as per instructions.
Land 2nd rate, level with some Palmetto.

North on the East boundary of Sec. 1.

Var. 14° 13' East.

40.00 Set a post charred & chalked for the $\frac{1}{4}$ sec. corner and raised a mound.

80.00 To a point for corner to Townships 8 & 9 N., Rs. 15 & 16 West. Set a post charred, chalked & notched and raised a mound with trench & pits as per instructions.
Land level & 2nd rate.

Between Townships 8 & 9 N., R. 15 W.
From the corner to Townships 8 & 9 N., R. 16 & 15 W. I run East on a random line between said township the variation of my compass being 14° 13' East.

I set temporary half mile & mile posts at 40.00 & 80.00 chs. I find the Township line to be 5 miles 78 chains and the falling to be 16 lks. south of the township corner.

The correction for the true line will therefore be 2 chs. and 2.5 lks. North per mile.

From the corner to Townships 8 & 9 North, Range 14 & 15 West, I run

West On a true line between Sec. 1 & 36.

Var. 14° 14' East.

40.00 Set a post charred & chalked for the $\frac{1}{4}$ sec. corner & raised a mound with trench & pits as per instructions.

80.00 Set a post charred, chalked & notched for the corner to Sec. 1, 2, 35 & 36 & raised a mound with trench & pits as per instructions.
Land level & 2nd rate.

West On a true line between Sec. 2 & 35.

Var. 14° 14' East.

40.00 Set a post charred & chalked for the $\frac{1}{4}$ sec. corner and raised a mound with trench & pits per instructions.

80.00 Set a post charred, chalked & notched for the corner to Sec. 2, 3, 34 & 35, and raised a mound with trench & pits per instructions.
Land level & 2nd rate.

West On a true line between Sec. 3 & 34.

Var. 14° 14' East.

Exterior Lines N. & W. of San Bernardino Meridian.

- 40.00 Set a post charred & chalked for the $\frac{1}{4}$ sec. corner and raised a mound with trench & pits per instructions.
80.00 Set a post charred, chalked & notched for the corner to Sec. 3, 4, 33 & 34, and raised a mound with trench & pits per instructions.
Land 2nd rate & level.
-

- West On a true line between Sec. 4 & 33.
Var. 14° 14' East.
40.00 Set a post charred & chalked for the $\frac{1}{4}$ sec. corner and raised a mound with trench & pits per instructions.
80.00 Set a post charred & chalked & notched for the corner to Sec. 4, 5, 32 & 33, and raised a mound with trench & pits per instructions.
Land level & 2nd rate.
West On a true line between Sec. 5 & 32.
Var. 14° 14' East.
40.00 Set a post charred & chalked for the $\frac{1}{4}$ sec. corner and raised a mound with trench & pits per instructions.
80.00 Set a post charred, chalked, & notched for the corner to Sec. 5, 6, 31 & 32, and raised a mound with trench & pits as per instructions.
Land 2nd rate & level.
-

- West On a true line between Sec. 6 & 31.
Var. 14° 14' East.
40.00 Set a post charred & chalked for the $\frac{1}{4}$ sec. corner and raised a mound with trench & pits per instructions.
78.00 To the established corner to Townships 8 & 9 North, Ranges 15 & 16 West.
Land level & 2nd rate with good grass along the entire line generally & some Palmetto.
-

- Between Ranges 15 & 16 W., T. 9 N.
From the corner to Tps. 8 & 9 N., Rs. 15 & 16 W. I run
North along the East boundary of Sec. 36.
Var. 14° 13' East.
40.00 Set a post charred & chalked for the $\frac{1}{4}$ sec. corner and raised a mound with trench & pits per instructions.
80.00 Set a post charred, chalked & notched for the corner to Sec. 25, 36, 30, 31 and raised. A mound with trench & pits as per instructions.
Land 2nd rate and ascending to the North with some Palmetto.
-

- North On the East boundary of Sec. 25.
Var. 14° 13' East.
40.00 Set a post charred & chalked for the $\frac{1}{4}$ sec. corner and raised a mound with trench & pits per instructions.
80.00 Set a post charred & chalked & notched for the corner to Sec. 24, 25, 19 & 30, & raised a mound with trench & pits per instructions.
Land 2nd rate and rising to the North.
-

Exterior Lines N. & W. of San Bernardino Meridian.

North On the East boundary of Sec. 24.
Var. 14° 13' East

40.00 Set a post charred & chalked for the $\frac{1}{4}$ sec. corner and raised a mound with trench & pits per instructions.

60.00 To a ravine. Course S. 36° E.

Exterior Lines of T. 8 N. R. 15 W.

Vol. 163 Sec. 34 On file at Cadastral Engr. Office,
Public Survey Office, Glendale, Calif.

Field notes of the exterior boundaries of Township 8 N. R 15W.
of San Bernardino Meridian according to survey made by
Ralph W. Norris, Deputy Surveyor under his contract dated
December 23, 1856

Chains

East Boundary

North From the corner to Townships 7 and 8 North R. 14 & 15 W. I run
along the East boundary of Sec. 36.

Var. 14° 12' East

40.00 Set a post charred and chalked for the $\frac{1}{4}$ Sec. cor. and raised
a mound with trench and pits per instructions.

80.00 Set a post charred, chalked and notched for the corner to
Sec. 25, 26, 30 and 31 and raised a mound with trench and
pits as per instructions.

Land 2nd rate and gently rolling

North On the East boundary of Sec. 25

Var. 14° 12' East

3.00 To foot of isolated hill

40.00 Set a post charred and chalked for the $\frac{1}{4}$ sec. corner and
raised a mound with trench and pits per instructions.

60.00 Leave hill for plain

80.00 Set a post charred, chalked and notched for the corner to
Sec. 24, 25, 19 and 30 and raised a mound with trench and
pits as per instructions

Land 2nd rate and hilly in part and part rolling

North On the East boundary of Section 24

Var. 14° 12' East

40.00 Set a post charred, chalked ~~for~~ the $\frac{1}{4}$ Sec. cor. and raised
a mound with trench and pits as per instructions.

80.00 Set a post charred and chalked and notched for the corner
to Sec. 18, 24, 18 and 19, and raised a mound with trench
and pits as per instructions.

Land 2nd rate and level

North On the East Boundary Sec. 13

Var. 14° 12' East

40.00 Set a post charred and chalked for the $\frac{1}{4}$ sec. cor. and raised
a mound with trench and pits as per instructions.

80.00 Set a chalked, charred and notched post Cor. to Sec. 12, 13, 7
and 18 and raised a mound with trench and pits as per
instructions.

Land 2nd rate and level with some palmetto

Chains

- North on the East Boundary of Sec. 12. Var. 14° 12' East
- 40.00 Set a post charred and chalked for the $\frac{1}{4}$ Sec. cor. and raised a mound with trench and pits as per instructions.
- 80.00 Set a post charred, chalked and notched for the cor. to Secs. 1, 12, 6 and 7 and raised a mound with trench and pits as per instructions.

Land Level 2nd rate with some palmetto

- North on East Boundary Section 1
- 40.00 Set a post charred and chalked for $\frac{1}{4}$ Sec. Cor. and raised a mound with trench and pits as per instructions.
- 80.00 To a point for Cor. to Townships 8 & 9 N. R. 14 & 15 W., set a post, charred, chalked and notched and raised a mound with trench and pits as per instructions.

SOUTH BOUNDARY

From the Corner to T. 7 and 8 N., R. 14 & 15 W. I run

- West Bet. Sec. 1 and 36 Var. 14° 12' East
- 40.00 Set a post charred and chalked for the $\frac{1}{4}$ Sec. Cor. and raised a mound with trench and pits as per instructions.
- 80.00 Set a post charred and chalked and notched for the Cor. to Sec. 1, 2, 35 and 36 and raised a mound with trench and pits as per instructions.

Land 2nd rate and rolling

- West Bet. Sections 2 and 35 Var. 14° 12' East
- 40.00 Set a post charred and chalked for the $\frac{1}{4}$ Sec. cor. and raised a mound with trench and pits as per instructions.
- 75.00 To road to Ft. Tejon Course North 51 W
- 80.00 Set a post charred, chalked and notched for the cor. to Sec. 2, 3, 34 and 35 and raised a mound with trench and pits as per instructions
Land 2nd rate and rolling
-

- West Bet. Sec. 3 and 34 Var. 14° 12' East
- 40.00 Set a post charred and chalked for the $\frac{1}{4}$ Sec. cor. and raised a mound with trench and pits per instructions.
- 80.00 Set a post charred, chalked and notched for the cor. to Sec. 3, 4, 33 and 34 and raised a mound with trench and pits per instructions.
Land 2nd rate and gently rolling
-

Chains

West Bet. Sec. 4 and 33 Var. 14° 12' East
40.00 Set a post charred and chalked for the $\frac{1}{4}$ Sec. Cor. and raised a mound with trench and pits as per instructions.
80.00 Set a post charred and notched for the cor. to Sec. 4, 5, 32 33 and raised a mound with trench and pits as per instructions.
Land 2nd rate and gently rolling.

West Bet. Sec. 5 and 32 Var. 14° 12' East
40.00 Set a charred and chalked post for the $\frac{1}{4}$ Sec. Cor. and raised a mound with trench and pits as per instructions.
80.00 Set a post charred, chalked and notched for the corner to Sec. 5, 6, 31 and 32 and raised a mound with trench and pits per instructions.
Land 2nd rate and level.
See C.S. 9238-1