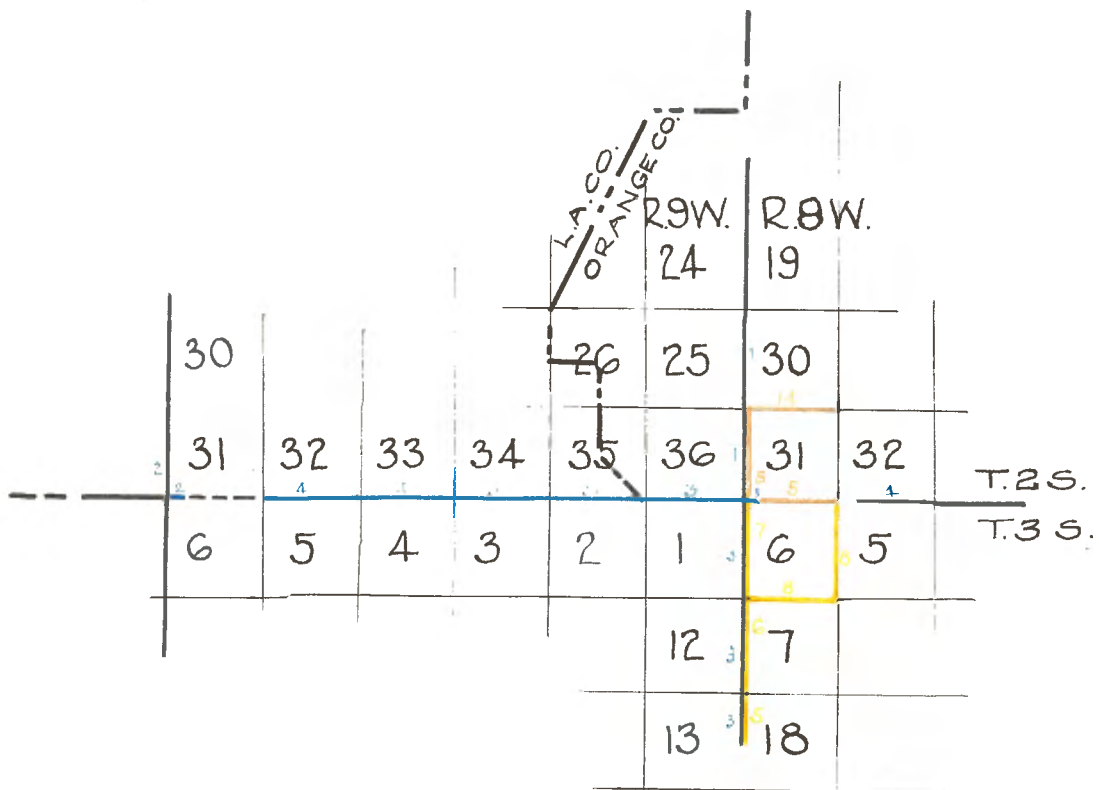


Copied from Copies
 furnished by
 United States Surveyor General
 for California.



Note.-

Red, Ebenezer Hadley Sept. 1874
 Yellow, John C. Rice Oct. 1894
 Blue, Henry Hancock

Department of the Interior
Office of U.S. Surveyor-General

San Francisco, California

January 24th. 1925.

I, John Plover, U.S. Surveyor-General for California, do hereby certify that the annexed transcript of the field notes of south line Township 2 South, Range 9 West; the east line of section 36 of same township; the east lines of sections 1 and 12, Township 3 South, Range 9 West and the south line of section 31, Township 2 South, Range 8 West, San Bernardino Meridian, California, is a true and literal exemplification of said field notes as the same remain on file and of record in this office.

(Seal)

John Plover
United States Surveyor General
for California.

Book 171-1. Survey made by Henry Hancock, Deputy Surveyor
Contract of July 5th. 1853.

W.B.T.2 S., R.8 W., S.B.M.

South on west boundary of section 30

x x x x x x x

80.00 Trail from Chino through the hills, course S.W.
Set sec. post and charred stake in witness mound 50 lks. S. of true
corner for trail, cor. of secs. 30 and 31

South on west boundary of section 31

4.00 Across arroyo with little water, course S 40 W
12.00 Across arroyo 150 lks. wide, course N 60 W.
19.00 Ravine N 33 W
27.18 Branch ravine
35.50 Westerly slope of ridge
39.70 Sand stone gulch, course S.W.
40.00 Set $\frac{1}{4}$ sec. post and charred stake in rock mound
No trench, pits on N. & S.
45.00 Spur
47.25 Gulch S 20 W.
48.25 " S 80°W
50.00 Ravine, S 82°W
60.00 Leave chemisal & enter wild oats
72.50 Top of ridge, course E.
80.00 Set Tp. corner post of Ts. 2 & 3 S., Rs. 8 & 9 W. and charred stake in
mound.

Finding it impossible to measure but a short distance I commence
at S.W. corner of the Tp. and measure East on south boundary of
section 31.

8.00 Enter chemisal
10.00 Center of ravine, course N 60 W
15.00 North slope
18.20 Set post and charred stake on east face of an insuperable ravine
ranging N. 54°W.
From which bears an
Oak S 86 $\frac{1}{2}$ ° W 427 lks. dist.
" 281 " " N.W.

S.B.T.2 S., R. 9 W., S.B.M.

West on south boundary of section 36, from cor. of Ts. 2 & 3 S.
Rs. 8 & 9 W.

S.B.T.2 S.,R. 9 W., S.B.M.

- 1.00 Enter wild sage on abrupt face of ridge.
- 9.00 Point of spur
- 13.00 Ravine N 37 W
- 16.75 Ridge
- 18.00 Ravine
- 22.00 Ridge & trail N. 2 W. and leave wild oats.
- 30.00 To spur on face of ravine taking to canada course S 35 W
Set post with charred stake in an irregular mound, pits on E. & W.
The insuperable roughness rendering it impossible to measure
farther with any due degree of accuracy.
South on east boundary of section 1, from cor. of Tp. 2 & 3 S.,
Rs. 8 & 9 W.
- 7.00 To point of ridge commanding a view of an exceedingly deep &
impassable ravine on south, being unable to pursue this line
farther; set post & charred stake in an irregular mound
Pits on N. & S. sides & no trench.

Book 170-4. Survey made by Henry Hancock, Deputy Surveyor
Contract of July 5th. 1853.

W.B. T. 2 S., R. 9 W. S.B.M.

- South on west boundary of section 31
- x x x x x x
- 80.00 Set Tp. post and charred stake in mound, cor. of Ts. 2 & 3 S.,
Rs. 9 & 10.

S.B. T. 2 S., R. 9 W., S.B.M.

In measuring east as far as practicable on the S. boundary of
Tp. 2 S., R. 9 W. I make the following notes.

- 6.00 ~~E. on S. Bdy. of Sec. 31~~
To deep gulch
- 9.00 ~~E. on S. Bdy. of section 31~~
Arroyo of ravine or valley 6 links over ranging S 43 1/2 E. & dis-
charging about 1/2 Hhd. of water per hour. Valley on aver. 2 chs. wide.
- 11.36 To post at W. base of an inaccessible & high mountain on the E. of
(749.76) valley from which bears
A walnut 7 in. dia. N 1 1/2 W 19 lks. dist.
Do Do 5 " " S 4 1/2 W 67 " "

Book 171-30. Survey made by Henry Hancock, Deputy Surveyor
Contract of May 17, 1858.

T 3 S., R. 9 W., S.B.M.

Survey of Tp. lines Commencing Jan. 1. 1858 at previously established
corner to Tps. 2-3 S. of the base line of Rs. 8-9 W. of San Bernardino
Meridian, run
S. bet. secs. 1-6. Var. 13° 25' E

T. 3 S., R. 9 W., S.B.M.

40.00 Set gray sandstone rock, 30 in. long, 12 in wide, 4 thick for $\frac{1}{4}$ sec. cor. & mkd. same.
80.00 Set grey sandstone 24x8x7 for cor. to secs. 1-6-7-12 & marked same. Land. broken & mountainous.
Soil, 2nd. rate

~~40.00 Set sandstone 16x7x6 for $\frac{1}{4}$ sec. cor. mark same~~
S. bet. secs. 7-12. Var. 13°25'E

40.00 Set sandstone 16x7x6 for $\frac{1}{4}$ sec. cor. mark same
80.00 Set sandstone 20x14x7 for cor. secs. 7-12-13-18, marked Land, mountainous.
Soil, 2nd. rate.
Timber, oak, sycamore & walnut

S. bet. secs. 13-18 Var. 13°25'E
40.00 Set rock of granite 18x11x8 for $\frac{1}{4}$ sec. cor. & marked
59.00 To a previously established post in irregular earth md. of S. bank of deep canon 2 chs. wide at S. base of int. ridge, crs. S.W. Land, mountainous, 2nd. rate.

From post previously established on Line of S. bdy. bet. secs. 36-1, 30 chs. W. of cor. Tps. 2-3 S., R. 8-9 W. counting from said Tp. cor. I measure W. on true S. boundary of Tp. & bet. secs. 1-36. Var. 13°25'E

40.00 Set rock 20 in. x 12x6 for $\frac{1}{4}$ sec. cor. & mark same
66.50 Cross stream of water 10 lks. wide, crs. S.W.
80.00 Set post for cor. secs. 1-2-35-36, md. & c. Land, mountainous & broken 2nd. rate.
Wild sage undergrowth.

W. bet. secs. - 2-35. V. 13°25'E
40.00 Set sandstone 16x10x7 for $\frac{1}{4}$ sec. cor.
80.00 Set sandstone 16x14x5 for cor. secs. 2-3-34-35. Land, mountainous, 2nd. rate.
Undergrowth, sage.

W. on line bet. secs. 3-34 V. 13°25'E
40.00 Set sandstone 15x12x8 for $\frac{1}{4}$ sec. cor.
80.00 " " 15x10x8 for cor. secs. 3-4-33-34, marked & c. Land, mountainous, 2nd. rate

T.3 S.,R.9 W.,S.B.M.

W. bet. secs. 4-33. Var.13°25'E
40.00 Set sandstone 14x12x10 for 1/4 sec.cor.marked &c
80.00 Set rock 24x15x6 for cor.to secs. 4-5-32-33 & marked.
Land,very mountainous.
Timber,scrub oak sage brush. Soil 3rd.rate.

W. bet. secs. 5-32 V 13°25'E
40.00 Set sandstone 18x12x4
80.00 Set sandstone 21x9x6 for cor.secs. 5,6,31,32 marked
Land,mountainous,2nd.rate.

W. bet. secs. 6-31. V.13°25'E
Not run;being too rough & falling inside rancho

General Description.

The N. part of this fr.Tp.is very rough & mountainous,with under-
brush,scrubby O & wild sage;the central principally high mts.
adapted to grazing & in some parts to wheat.

Book 171-18. Survey made by Henry Hancock,Deputy Surveyor
Contract of March 7" 1865.

North Boundary T 3 S.,R. 8 W., S.B.M.

W.on N.B.S.ec. 5 V 14° E
x x x x x x
47.50 To point on E.bluff of a brushy canon,crs. S.beyond which it is
impracticable to measure further W.& set sandstone 17x5x5
May 27" 1865.

Book 171-16. Survey made by Ebenezer Hadley {Deputy
Contract of Sept. 6" 1872. } Surveyor.

T 2 S.,R. 8 W.,S.B.M.

West on a random line on N. bdy.of Sec.31. Var.14°45'E
40.00 Set temp 1/4 sec .cor.
76.80 To a point 60 lks.N.of station No.19 of El Chino Ranch.
Set a grey granite stone 24x8x8 in. at station 19,cor. to secs.
31 and 36,on range line, ranges 8 & 9 W.
From which

T 2 S.R. 8 W., S.B.M.

A black walnut tree 12 in. dia. bears N 48°E 2.13 chs. dist.
Land, hilly & rolling. Soil 1st. rate, mostly

(From temp. sec. cor. to secs. 31 & 32)

West on random line.

Va. 14°45'E

40.00

Set temp. $\frac{1}{4}$ sec. cor.

77.40

To Tp. cor. of Tps. 2 & 3 South, Ranges 8 & 9 West

This cor. is situated on a high hill - post and mound in good condition. This mile is a continuation of a low chaparral and stony ridges and gulches. The S half of sec. 31 is rough, rocky and brushy.

Soil, poor, 2nd. rate.

East on a true line S. B'dy. of sec. 31.

Va. 14°45'E

37.40

Set a yellow sandstone 15x10x4 for $\frac{1}{4}$ sec. cor.

77.40

Set a sandstone 18x16x8 for cor. to secs. 31 and 32

From the cor. to Tps. 2 & 3 S. Rs. 8 and 9 W. I ran North on a random line.

Va. 14°45' East

40.00

Set temp. $\frac{1}{4}$ sec. cor. on the S. slope of a low ridge.

Up to this point the land slopes N. and is covered mostly with a thick growth of chaparral.

Scattering oak timber in the shallow ravines

80.00

Intersected cor. to secs. 30 & 31, 25 lks. E. of cor.

Land, 40.00 chs. rolling hills, mostly 1st. rate soil.

S 11'E. on a true line.

Va. 14°45'E.

40.00

Set a post in mound of stone for $\frac{1}{4}$ sec. cor.

80.00

Cor. to secs. 36 & 31, Tps. 2 & 3 S., Rs. 8 and 9 West

Book 361-17.

Surveyed by John C. Rice, Deputy Surveyor.

Contract of November 28, 1892.

Survey commenced October 17, 1894.

Survey completed October 20, 1894.

Exterior Boundaries T 3 S, R. 8 W. S.B.M.

West Boundary

I now return to the quarter section corner between sections 13 and 18.

Thence I run

North on a random line between sections 13 and 18.

Var. 14°29' East.

Exterior Boundaries T 3 S, R. 8 W., S.B.M.

44.33 To old corner to sections 7, 12, 13 and 18, which is a sandstone rock 16x7x6 inches, 11 inches in the ground, marked with 2 notches on N. and 4 notches on the south edges. raised a rock mound 2 feet high, 4 feet base alongside. Thence I run South x x x x

West Boundary

I now return to the corner to sections 7, 12, 13 and 18 and run North on a random line between sections 7 and 12 Var. 14°29' East

41.89 To old quarter section corner, which is a sandstone rock 16x7x6 inches, 11 inches in the ground, marked $\frac{1}{4}$ on W. faces. Raised a rock mound $1\frac{1}{2}$ feet high $3\frac{1}{2}$ feet base alongside. Corner stands on high spur, course SE. Thence I run South on a true line between sections 7 and 12 With same variation. Descending broken land.

23.70 Ravine, 5 links wide, course SW. - 600 feet
Ascend broken land

41.89 The corner to sections 7, 12, 13 and 18
Land, mountainous. Soil, third rate.

I now return to the quarter section corner between sections 7 and 12. Thence I run

North on a random line between sections 7 and 12. Var. 14°29' East

43.05 To a point 21 links west of old corner to sections 1, 6, 7 and 12, which is a grey sandstone 24x8x7 inches, 18 inches in the ground, marked with 1 notch on N. and 5 notches on S. edges; raised a mound of stone 2 feet high, 4 feet base alongside.

Thence I run

South 0°17' West on a true line between sections 7 and 12 with same variation.

Ascending rough, broken land.

43.05 The quarter section corner between sections 7 and 12.
Land, mountainous.
Soil, third rate.

October 19, 1894.

October 20, 1894.

I now return to the corner to sections 1, 6, 7 and 12

Thence I run

North on a random line between sections 1 and 6.

Var. 14°29' East

Exterior Boundaries T 3 S.R 8 W. S.B.M.

West Boundary.

- 38.90 To a point 71 links west of old quarter section corner, which is a grey sandstone rock ~~30x12x4~~ inches, 20 inches in the ground, marked $\frac{1}{4}$ on W. face. Raised a mound of stone 2 feet high, 4 feet base alongside.
Thence I run
South $1^{\circ}03'$ West on a true line between sections 1 and 6
Descending broken land. With same variation.
- 19.10 Soucal Creek, 25 links wide, course S 70° W
Ascend broken land
- 38.91 The corner to sections 1, 6, 7 and 12
Land, mountainous
Soil, third rate.
-
- I now return to the quarter section corner between sections 1 and 6
Thence I run
North on a random line between sections 1 and 6 Var. $14^{\circ}29'$ East.
- 36.72 To a point 363 links west of old corner to townships 2 and 3 South, ranges 8 and 9 west, which is a post 4 inches square, standing in old rock mound, marked T. 2 S., R. 8 W., S 31 on N.E.
T 3 S., R. 8 W., S 6 on SE
R. 9 W., S 1 on SW, and
S 36 on NW. faces; with 6 notches on each edge. Post is in good condition.
Rebuilt rock mound 2 feet high, 4 feet base around post.
Corner stands on ridge, course NW. and SE.
Thence I run
S $5^{\circ}39'$ West on a true line between sections 1 and 6, with same variation.
Descending
- 12.10 Gulch, 10 links wide, course SW. — 200 feet
Ascend
- 20.70 Spur, course SW + 150 feet
Descend
- 36.90 The quarter section corner between sections 1 and 6
Land, mountainous.
Soil, third rate.

October 20, 1894.

Exterior Boundaries T 3 S., R. 8 W., S.B.M.

Book 361-16. Survey made by John C. Rice, Deputy Surveyor
Contract of November 28, 1892.
Survey commenced October 18, 1894.
Survey completed October 20, 1894.

Subdivisions T 3 S., R. 8 W., S.B.M.

I now go to the old corner to sections 5, 6, 7 and 8, which is a sandstone 18x12x4 inches, 12 inches in the ground, the notches being almost obliterated, I recut 5 notches on S. and E. edges, and raised a mound of stone, 1½ feet high, 3½ feet base alongside, corner stands on S. slope of ridge near top.

Thence I run

West on a random line between sections 6 and 7. var. 14°29' East
X X X X X XX

82.89

Intersect west boundary of the township at a point South 0°17' west 5.17 chains from old corner to sections 1, 6, 7 and 12, which is a grey sandstone 24x8x7 inches marked with 1 notch on N. and 5 notches on S. edges.

At point of intersection I set a live oak post 4½ feet long, 4 inches square, 24 inches in the ground for closing corner to sections 6 and 7, marked

C.C. T. 3 S., R. 8 W. on E.

S. 6 on N. and S. 7 on S. faces, with 1 notch on N. and 5 notches on S. faces, from which a

Live oak 8 in. dia. bears S 66½° E., 171 links distant marked

T 3 S., R. 8 W., C.C.S. 7 B.T.

No other tree within limits

Thence I run

East on a true line between sections 6 and 7

X.X.X.X.X.

North between sections 5 and 6 Var. 14°29' East

Ascending.

X X X X X XX

81.37

Intersect north boundary of the township at a point 1.16 chains E. of old corner to sections 31 and 32, which is a sandstone 18x16x8 inches, 12 inches in the ground, with 5 notches on E. and 1 notch on W. edges. At point of intersection, I set a sandstone 12x10x8 inches 8 inches in the ground for closing corner to sections 5 and 6, marked C.C. with 5 notches on E. and 1 notch on W. faces, raised a mound of rock 2 feet high, 4½ feet base alongside.

Land, mountainous. Soil third rate. Manzanita and oak brush.

October 20, 1894.