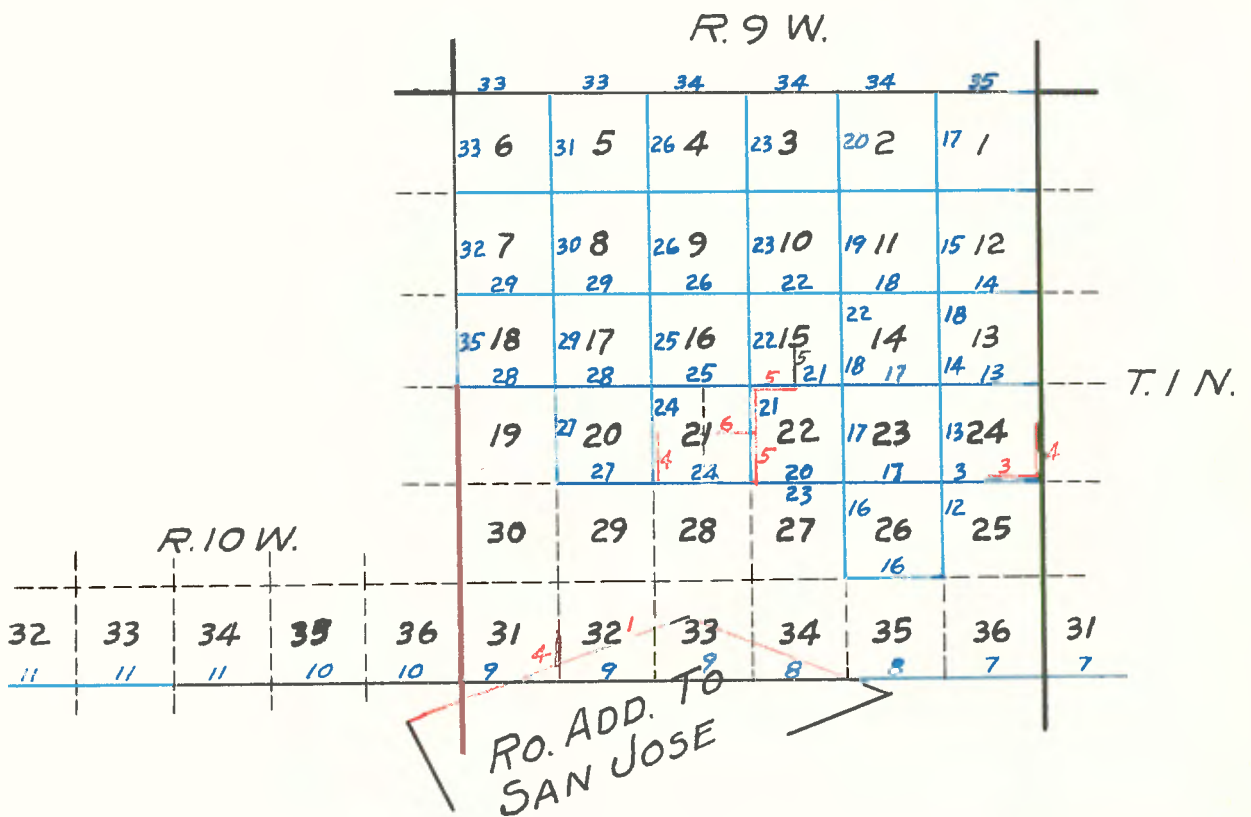


Copied from Photographic Copies
 furnished by
 U. S. General Land Office
 Washington, D. C.



Red - M. G. Wheeler 1874
 Blue - G. W. Pearson 1884

T 1 N., R. 9 W., S.B.M.

Survey made with a solar compass manufactured by John Hoach of San Francisco in good order and adjustment,

I begin at the Black Oak 20 ins. diam.

Marked A. S. J. 4 Station No. 4 of the final survey

Survey of the Rancho Addition to San Jose made by M. G. Wheeler, Deputy Surveyor in October 1874.

From which bears

A Black Oak 10 ins. diam. S. 8° E. 60 lks. dist.

Marked A. S. J. 4 B. T.

A Black Oak 26 ins. diam. N. 2° W 70 lks. dist.

Marked A. S. J. 4 B. T.

Latitude by observation 37° 8'

Thence S 64° 3/4 W. on a random line
Var. 14° 18' East

At 230.48 chs. to a point 400 lks. S 25° 7/8 East from the post 4

ins. diam.

Marked A. S. J. 3 in mound of earth and stone 24 ins. high.

From which bears

An oak 11 ins. diam. S 88° 7/8 W 122 lks. dist.

Marked A. S. J. 3 B. T.

A sycamore stump N 27° E 258 lks. dist.

T 1 S R. 9 10 W. S.B.M.

The true course of this line is therefore N 65° 3/4 E. and from station 3 I run

N 65° 3/4 E. on true line

Var. 14° 15' East

6.90

Head course N. E. and S. W.

41.39

A stake in a stone mound

45.08 A post 3x3 ins. in mound 18 ins. high with pits 24x18x12 ins. on N.

and on the grant line on the line bet. Ranges 9-10 W 23.30 chs.

south of the corner to said Ranges on the San Bernardino Base

Line which corner is a post.

From which bears

A eyasmore tree 15 ins. diam. S 33° W 399 lks. dist. and then

a eyasmore stump as described in the notes from the Office of

the Surveyor General.

82.00 Ascend broken hills

103.08 Intersect the San Bernardino Base line 52.86 cha. East of the

Cor. to Ranges 9-10 W. at a post marked A.S.J. and S 6 and S 31

in an earth mound with pits.

133.22 Intersect line bet. sees. 31-32 11.98 lks. North of the corner to

sees. 5-6-31-32

A stone 14x9x6 ins. and

P I S. R. 9-10 W., S.B.M.

Set a sumpstone post 48x3x3 ins. marked T. 1 N. R 9 W. S 32 on N.E.

S 31 on N. W. and A-S-J on S. E. 12 ins. deep, made a stone mound

175.00 18 ins. high around post on a spur sloping West

Ravine course N. W.

Spence house bears N. 25° W 6.20 cha. dist.

195.50 Spur course West. Descend

202.50 Foot of mountain bears E. & W.

218.05 Road course E. & W.

221.18 Intersect line between sees. 32-33, 32.88 cha. south of cor. to sees.

28-29-32-33

A post in mound with pits

and set a granite stone 15x7x6 ins. marked A. S. J. on S. face 10 ins.

deep for corner to fractional sees. 32-33 made mound 18 ins. high

221.88 Road course N. W. and S. E.

230.48 To Black Oak Station A. S. J. 4

Thence

S 76° 3/4 E. along Grant line

Var. 14° 18' East

1.00 Wash 40 lks. wide runs north

11.50 Road course E. and W.

73.04 Intersect the line bet. sees. 33-34 at a post marked A.S.J. S 33

and S 34 with a small stone in earth mound set.

A granite stone 16x9x6 ins. marked A.S.J. for corner to fractional

sees. 33-34

Dimas Gannon

Land rough hills. Timber scattering oak and sycamore in San

hill. Country too rough to continue the line any farther.

40.00 Set a granite 20x16x6 for the 1/4 sec. cor. on the east face of a

Leave canon and ascend

28.00 A Black Oak, 2 1/2 inches in dia. on line

27.40 A road course, North and South

27.00 A creek 5 lks. wide, runs south

25.00 Foot of hill. Enter San Dimas canon course South

20.00 Set a stone mound for future use on the west slope of a hill

12.50 A ravine 50 lks. wide, runs N. W.

9.00 Brow of a steep hill, Descend

Descend

Top of low ridge, course North and South

3.00 West on a true line bet. Secs. 24 & 25

Var. 13°30' E.

rough to run north I run thence

on the east boundary of the Township, and the country being too

I commence this survey at the established corner to Secs. 24 & 25

T 1 N., R. 9 W., S. B. M.

October 21st 1882.

Both marked A. S. J. 5 B. T.

A Black Oak 36 ins. diam. bears S 47° 1/2 W 75 lks. dist.

A Black Oak 20 ins. diam. bears S 2° E 72 lks. dist.

Rancho San Jose from which

To the stump of the Botello Oak Station No. 5 of the Survey of Rancho addition to San Jose and to Station No. 11 of Survey of

216.87

To a granite stone at intersection of the San Bernardino Base line

215.02

post 3x3 ins. marked 1/4 S in mound 18 ins. high

26.04 obs. South of the 1/4 Sec. corner bet. secs. 34-35 which is a

34-35.

faces in a stone mound 30 ins. high. Corner to fractional secs.

To a post 3x3 ins. marked A. S. J. on S., S 34 on S. E. faces

155.04

S 34 on S. E. faces
S 33 on S. W.
S 28 on N. W.
A post marked T 1 N. R. 9 W S 27 on N. E.

47.10 obs. south of the corner to Secs. 27-28-33-34

Timber scattering oak and sycamore in the canyon.

It is bordered by rough almost impassable mountains

but very narrow, in no place exceeding 600 lks. in width

Land west of this line is the San Dimas Canon, fertile in spots,

I therefore dropped the line at this point

The country North of this point is too rough for surveying.

An oak 12 ins. dia. bears West 200 lks. dist.

San Dimas Canon which I marked for the corner to Secs. 13 & 24

To a sycamore tree 15 ins. in diam. standing on the east side of 40.00

On low point of hills turning west 36.00

A point from which J. B. Chappell's house bears West 400 lks. dist. 21.50

Enter and follow along the eastern side of San Dimas Canon. 5.00

A ravine 75 lks. wide, turns N. W. 2.00

North bet. Secs. 19 and 24

Var. 13°30' E.

T. 1 N., R. 9 W., S. B. M.

Land, steep side hill, bordering San Dimas Canon.

Boundary of Section 24.

Mound, on the west face of a hill for the $\frac{1}{2}$ Sec. cor. at the east

Set an oak post 3 in. dia. 4 ft. long 12 inches deep in a stone 20.00

" " " 25 " " North 18.50

A ravine 75 lks. wide, turns North 11.00

A ravine 40 lks. wide, turns North 6.00

East through Section 24.

Var. 13°30' E.

Timber, scattering oak and sycamore in the canyon.

Land a narrow canon bordered by rough hills

Set a stone mound, on the top of a low ridge turning N. W. 40.00

Leave canon. Ascend 37.00

A small creek 5 lks. wide, turns S. E. 23.00

A creek 5 lks. wide, turns south 20° West 18.60

Enter San Dimas Canon, course south 20° W. 10.00

A ravine 50 lks. wide turns N. W. 7.00

North-descending

Var. 13°30' E.

West from the S. E. corner of Secs. 24 and 25

From the stone mound 20 chs.

Adkinson's house bears north 76° W. dist. about 20.00 chs.

52.00

Top of a sharp ridge running N. W.

44.00

A Ravine 50 lks. wide, turns N. W.

40.00

Set a Granite 15x10x6 on the north face of a hill for the $\frac{1}{2}$ sec. cor.

30.00

A Ravine 75 lks. wide turns N. W.

23.00

Top of steep ridge. Course East & West
Descend

16.00

A Gully 15 lks. wide, turns S. E.

8.00

A deep Gulch, 40.00 lks. wide, turns S. W.

North bet. Secs. 21 & 22 Var. 13°30' E.

From the established corner to Secs. 21, 22, 27, 28

T L N., R. 9 W., S.B.M.

Country too rough, and worthless to carry the line any farther
Land low hills, Good bee pasture.

20.00

Set a stone mound on the south face of a brushy hill

18.10

A road course N.E. & S.W. leave canon and ascend

15.50

A dry wash, 25 lks. wide course S.W.

13.00

Enter Dalton Canon, turns S.W.

7.00

A Ravine 30 lks. wide, turns N.W.

5.00

Top of low ridge, course East and West

North bet. Secs. 20 and 21. Ascending. Var. 13°30' E.

From the established corner to Secs. 20, 21, 28, 29

Timber scattering black oak October 7th 1874.

rate.

From Dalton Canon. The balance is a brushy hill side 2nd & 3rd

land-the northern 21 chs. is gravelly flat washed by the floods

32 on the North face of a low hill.

deep, and raised a stone mound for the cor. of trac. Secs. 31 and

Deposited a charred stake, and planted a Granite 24x12x4, 18 inches

Intersected the line of Rancho Addition to San Jose 36.40

27.60

A Black Oak 12 ins. diam. on line

21.00

Ascend to low hills, course E. & W.

From the $\frac{1}{2}$ sec. cor. bet. Secs. 31 & 32 Var. 13°30' E.

Canon.

Land rough hills, valuable only for a little timber in the main becomes almost impassible and worthless. there is nothing worth surveying beyond, and the country a rough rocky hill and dropped the work at this point as Set a Granite stone 20x12x4 in stone mound on the S. Face of

20.00

T. 1 N., R. 9 W., S.B.M.

Ascend

A gulch 50 lks. wide runs west Point of ridge, running west A timbered canon, 100 lks. wide, runs S.W.

15.00

10.00

8.00

North through Sec. 15. Descending Var. 13°30' E.

Timber, oak in Dalton Canon.

Land rough hillside, good bee range

too rough to carry the line any farther.

mound, for the $\frac{1}{2}$ Sec. cor. on the N. face of a steep hill. Country

Set an oak post 3 ins. dia. 4 ft. long, 12 inches deep, in earth

40.00

A ravine 50 lks. wide, runs N.W.

36.00

Ascend

A creek 5 lks. wide in Dalton Canon, 100 lks. wide, runs S.W.

30.30

A gully 20 lks. wide, runs south

20.00

A rocky gulch 30 lks. wide, runs south

5.00

Descending Var. 13°30' E.

East on a true line bet. Secs. 15 and 22

Land rough hills, third rate, but good bee range. Timber oak in Dalton canon.

the South face of a rough brushy hill

and raised stone mound for the corner to Secs. 15, 16, 21, 22 on

Set a Granite 20x6x6, 15 inches deep, deposited charred stake,

80.00

Ascend a rough hill

70.00

A creek 5 lks. wide, runs S. W.

68.60

Enter Dalton canon, timbered

65.00

A gully 15 lks. wide, runs. N. W.

60.50

M. G. Wheeler
Dep. U.S. Surveyor.

Very respectfully,

The valuable portion of this township having already been surveyed, I only added a little to include settlers engaged in the manufacture of honey and to connect the section line with the lines of Rancho "Addition to San Jose as just surveyed by me. The northern portion of the Township lies in exceedingly rough rocky mountains, having no agricultural value, as they are dry, rocky and very abrupt, and in many places, utterly impassable. I know of no mineral lands in the Township. The timber is confined to the portion before surveyed, except a little in the narrow canons, but my lines have included every-thing that is worth having, water is scarce.

General Description

From the $\frac{1}{2}$ Sec. cor. bet. Secs. 21 & 22
West on a true line through Sec. 21
Var. 13°30' E.
10.00 Top of ridge, runs N. W.
19.00 A ravine 75 fms. wide, runs North
30.00 Top of ridge, running North. Descend
40.00 Set a granite 1810x10 on the North face of a hill for the
interior $\frac{1}{2}$ Sec. cor.
46.00 A dry wash, 20 fms. wide, runs S. W.
Enter Dalton canon
48.50 A road course N. E. & S. W.
Ascend
50.00 Set a stone mound, at the south base of a rough hill, and dropped
the line, on account of the roughness of the country.
Land, rough hill, good bee range
Timber very scattering.
Sycamore in Dalton canon.
Oct. 9th 1874.

San Bernardino Base line - S boundary of T 1 N, R 8 W.

West Variation of the needle 13° 20' E. December 1852.

6th mile on S. boundary of T 1 N R 8 W

6.00 Crossed by ravine 5 lks. wide Course S. W.

Note The water runs above but sinks where the line crosses this last ravine. (note)

31.50 To open prairie at foot of mountain range-Set charred sycamore stake, in a mound of earth

Note The mountain range is very winding brs. N 70 W & S 70 E for a short distance

40.00 Charred sycamore stake and charred sycamore 1/2 sec. post in a mound of earth from which the centre of 4 pits bears N 11 lks.,

S 11 lks. E 11 lks., W 11 lks. Elder N 68.15 W 77 lks. 11 in dia.

Planted 4 olives.

69.00 Broken deep dry ravine 50 lks. wide course S.W.

80.00 Set 6th mile post (& a charred stake) in a mound of earth corner

to T 1 N R 8 W Sec. 37 - T 1 N R 9 W Sec. 36 - T 1 S R 8 W Sec. 6

T 1 S R 9 W Sec 1 from which centres of 4 pits bears N 45 E 11 lks., N 45 W 11 lks., S 45 E 11 lks., S 45 W 11 lks.

Planted 4 olives - Hed Oak N 88° 45' E 388 chs. 36 lks. dist. No

other bearing tree convenient. First 3150 chs. mountain range

(being very near southern limits of the range) Residue mostly wavy

and rare open prairie with some scattering oak near the corners

just established. Light gravelly soil.

Note Ascertained the variation of the needle on the night of 16th.

December 1852 at a point very near and north of the San Bernardino

Base line, and about 120 chs. northwesterly of the S.E. corner of T 1 N

R 9 W., Taking N. star at its greatest western elongation-the

night being extremely favorable.

Variation found 13° 45' E. 1st mile on S. boundary of T 1 N., R. 9 W.

24.00 To dry ravine 100 lks. wide-course south
Sycamore charred stake & charred

West Sycamore 1/2 sec. post in mound of earth from which bears the center

of 4 pits N 10 lks. S 10 lks., E 10 lks., W 10 lks.
Planted 4 olive seeds

79.80 Crossed small gully 6 lks. wide course S. W.

San Bernardino Base Line-S. Boundary of T 1 N., R. 9 W.

80.00 Charred stake and charred pine post in a mound of earth from which (being a corner to Secs. 35 and 36 T 1 N., R. 9 W.-Secs. 1 & 2 T 1 S. R. 9 W.) The centers of 4 pits bears N 45 E 11 lks., N 45 W 11 lks., S 45 E 11 lks., S 45 W 11 lks. Planted 4 olives, last mile level and wavy. Mostly 2nd rate level land.

Open prairie

2nd mile on S. Boundary of T. 1 N., R. 9 W.

17.00 To high bluff course S 57° W - N 59° E about 25 feet high

18.80 To low brushy scrub

40.00 Charred sycamore stake and charred Sycamore $\frac{1}{2}$ sec. post in a mound of earth from which the centers of 4 pits bears N 10 lks., S 10 lks., E 10 lks., W 10 lks. Planted 4 olives.

Note The variation of the needle was ascertained about 150 yards N. of the $\frac{1}{2}$ Sec. post on the night of the 16th December 1852, was found as already observed to be 13° 45' E there being no indication of attraction from mineral or other disturbances.

80.00 Charred Sycamore stake and charred Sycamore post corner to Secs. 34 and 35 T 1 N R 9 W-Secs. 2 & 3 T 1 S R 9 W from which centres of 4 pits bears N 45 E 11 lks., N 45 W 11 lks., S 45 E 11 lks., S 45 W 11 lks. Ground too rocky and brushy for the growth of seed. First 17 obs. moderately wavy 2nd open prairie. Residue poor sandy stony, scrub level. Some scattering sycamore and oak not very far distant and mostly right of the line.

3rd mile west on S. Boundary of T 1 N., R. 9 W.

40.00 Charred sycamore stake and charred Sycamore $\frac{1}{2}$ Sec. post from which

West

Sycamore N 7° W 17 $\frac{1}{4}$ lks. 8 ins. dia.

47.33 To sycamore tree 12 in. dia.

52.93 " " " 13 " "

55.60 To Branch 8 lks. wide course S. W.

59.60 To point of bluff near southern entrance

60.00 Cross bluff course N 70° East

80.00 Set charred pine post from which 4 sycamore trees bears
 N 49° E 160 lks. 7 in. dia. T 1 N R 9 W. S. 34
 Sycamore
 N 70° W 70 lks. 9 ins. dia T 1 N R 9 W. S 33
 Sycamore
 S 37½ E 280 lks. 17 ins. dia. T 1 S R 9 W S 3
 Sycamore
 S 89° W 504 lks. 7 in. dia. T 1 S R 9 W S 4.
 Sycamore

San Bernardino Base Line-S. boundary of T 1 N. R. 10 W.
 Last mile 3rd stony and bushy with scattering growth of sycamore and
 Red Oak timber. The last 45 chs. low and subject to over-flow
 apparently 3 or 4 feet- much out by gullies- some large red oak
 4th mile on S. boundary of T 1 N R 9 W.
 Sycamore tree 12 in. dia.
 5.43

Rose blint about 25 feet-course N 80 E & S 45 W
 to open rolling prairie
 Cross old road-course N.W. & S. E.
 38.50

Supposed to lead from old Mission of San Gabriel to San Bernardino
 Charred stake and charred sycamore 7 Sec. post in a mound of earth
 from which the centres of 4 pits bears N 10 lks., S 10 lks. E 10 lks.,
 W 10 lks. planted 4 olive seed
 45.86
 To red oak tree 37 in. dia.
 " " " 24 " "

54.50 To very high hills bearing N 50° W about 20 chs. and S 35 W
 about 7 chs.
 80.00 Charred willow stake and charred pine post in a mound of earth corner
 to secs. 32 and 33 T 1 N R 9 W - Secs. 4 & 5 T 1 S R 9 W from which
 centre of 4 pits bears N 45° E 11 lks., S 45 E 11 lks., N 45 W 11 lks.,
 S 45 W 11 lks. - planted 4 olive seed. of the lat 54.50 chs.
 1st 31 chs. is low rocky bushy-scattering sycamore and oak overflows
 3 or 4 feet-Much out by gullies. Poor 3rd rate. Residue high
 2nd rolling prairie-some scattering oak
 Last 25.50 chs. very hilly - 3rd stony surface
 West
 Mostly prairie - Dec. 17, 1852
 5th mile on S. Boundary of T 1 N., R. 9 W
 To scrub oak tree, 4 in. dia.
 29.45
 Charred willow stake and charred pine 7 sec. post in a mound of earth
 from which the centres of 4 pits bear N 10 lks., S 10 lks., E 10 lks.,
 W 10 lks. planted 4 olive seed.
 80.00 Charred willow stake and charred pine post in a mound of earth, corner

to sec. 31 & 32, T 1 N., R. 9 W. Secs. 5 & 6 T 1 S., R. 9 W. from which the centres of 4 pits bear N 45 E 11 kcs., N 45 W 11 kcs., S 45 E 11 kcs. S 45 W 11 kcs. Surface too rocky and bushy for seed. Last mile very broken, high hills some open prairie, but mostly low scrub. - Surface rocky most of the mile - Soil 2nd & 3rd. High land, but mostly poor scrub - No timber. 6th mile on S. boundary of T 1 N., R. 9 W. Leave broken hills bearing N. E. & S 65 W To valley, timbered, bushy land. San Bernardino Base line, S. boundary of T 1 N. R. 9 & 10 W.

40.00 Set charred Sycamore $\frac{1}{2}$ sec. post from which bears Sycamore N 88° 30' E 203-9 ins. Sycamore S 89 45 W - 394 - 7 ins. Crossed dry ravine 50 kcs. wide-course S.W. 50.00 Set charred oak stake and charred pine post S.W. cor. T 1 N., R. 9 W. from which dis. Sycamore S 89° 45' E. 1ks. 1n. 238-9 dia T 1 S R 9 W. S 6 S 34 W 400-14 * T 1 S R 10 W-1 N 89 30 E-213-8 dia T 1 N R 9 W-31 N 89 W - 1049.12 dia T 1 M R 10 W-36 First 36 chs. broken surface being very hilly-wild sage and bushes No timber 3rd rate land - partly 2nd. Residue level Scattering timber of Sycamore and Oak brushy - with heavy growth of prickly pear in places Note The high hills noted on the 4, 5 and 6 miles on S. boundary of T 1 N, R 9 W do not extend to the coast range of mountains but are surrounded by a large valley. West Ascertained the variation of the needle at a point about 120 chs. N.W. from the S.E. corner of T 1 N., R. 10 W. on the night of December 19, 1852. Found to be as near as may be 13°45' East. December 19, 1852. Variation of needle 13°45' E First mile on S. boundary of T 1 N R 10 W Oak stake charred and charred sycamore $\frac{1}{2}$ sec. post in a mound of earth from which the centres of 4 pits bear N 10 kcs. S 10 kcs. E 10 kcs. W 10 kcs.

80.00 Charred oak stake and charred sycamore post in a mound of earth from which being a corner to Secs. 35 and 36 T 1 N., R. 10 W., Secs. 1 and 2, T 1 S., R. 10 W. the centres of 4 pits bear N 45 E 11 lks. N 45 W 11 lks. S 45 E. 11 lks., S 45 W 11 lks. Planted 4 olive trees

40.00 Charred oak stake and charred sycamore post in a mound of earth from which the centres of 4 pits bears N. 10 lks., S 10 lks., E 10 lks., W 10 lks. Planted 4 olive seeds.

20.00 To Dalton's Improvement nearly N. & S. 2nd mile on S. Boundary of T 1 N., R. 10 W.

40.00 Charred oak stake and charred sycamore post in a mound of earth from which the centres of 4 pits bears N. 10 lks., S 10 lks., E 10 lks., W 10 lks. Planted 4 olive seeds.

20.00 To Dalton's Improvement nearly N. & S. 2nd mile on S. Boundary of T 1 N., R. 10 W.

80.00 Charred oak stake and charred sycamore post in a mound of earth from which being a corner to Secs. 35 and 36 T 1 N., R. 10 W., Secs. 1 and 2, T 1 S., R. 10 W. the centres of 4 pits bear N 45 E 11 lks. N 45 W 11 lks. S 45 E. 11 lks., S 45 W 11 lks. Planted 4 olive trees

80.00 Last mile 1st rate level open prairie.

Note The Rancho claimed by Henry Dalton and known by the name of Azusa now occupied by George Dalton bears N 32° 45' W. There being a heavy growth, scattering nearly to the mountains of post oak and Red oak, E. & S. E. of this Rancho.

80.00 2nd mile on S. Boundary of T 1 N., R. 10 W.

20.00 To Dalton's Improvement nearly N. & S.

40.00 Charred oak stake and charred sycamore post in a mound of earth from which the centres of 4 pits bears N. 10 lks., S 10 lks., E 10 lks., W 10 lks. Planted 4 olive seeds.

San Bernardino Base line - S. Boundary of T 1 N. R. 10 W.

Note At last 1/2 sec. corner, Rancho Azusa dis. N 2° 30' E

45.20 Leave Improvement bearing N 10° E nearly to Dalton's dwelling and S 10° W about 10 obs.

58.50 Cross road leading to Los Angeles, course S 35° W

69.20 To branch S lks. wide course S 35° W to scrub bearing S 35° W

80.00 Oak charred stake and charred alder post in a mound of earth corner to Secs. 34 and 35 T 1 N R 10 W - Secs. 2 and 3 T 1 S., R. 10 W. from which the centres of 4 pits bears N 45 E 11 lks., N 45 W. 11 lks., S 45 E 11 lks., S 45 W 11 lks. Planted 4 olive trees.

First 69.20 lks. 1st rate level prairie. Light soil-Residue way scrub stony prickly pear 3rd rate.

40.00 Charred oak stake and charred sycamore post in a mound of earth from which the centres of 4 pits bears N 10 lks. S 10 lks., E 10 lks., W 10 lks. Planted 4 olive seeds.

80.00 Charred oak stake and charred alder post in a mound of earth from which the centres of 4 pits bears N 45 E 11 lks., S 45 E 11 lks., N 45 W 11 lks., S 45 W 11 lks. being a corner to Secs. 33 and 34 T 1 N, N 45 W 11 lks. S 45 W 11 lks. being a corner to Secs. 33 and 34 T 1 N,

R 10 W & Sec. 3 & 4, T 1 S, R 10 W.
 Last mile moderately wavy cedar, prickly pear, wild sage, stony,
 3rd scrub. December 20, 1852.
 4th mile on S. boundary of T 1 N., R. 10 W.
 Charred willow stake & charred sycamore $\frac{1}{2}$ Sec. post from which bears
 Cedar N 48 W 105 lks., 8 in. dia.
 Swamp Dogwood S 20 W 183 lks. 4 in. dia.
 Charred oak stake and charred Alder post from which bears
 Swamp Dogwood N 57°30' E. 300 lks. 8 in. dia.
 T 1 N., R 10 W. S 33 Swamp Dogwood N 34 $\frac{1}{2}$ W 114 lks. 5 in. dia.
 T 1 N., R 10 W S 32 Cedar S 66 $\frac{1}{2}$ E 76 lks. 12 in. dia.
 T 1 S R 10 W. S 4 Swamp Dogwood S 80 W 72 lks. 4 in. dia.
 T 1 S R 10 W. S 5 Last mile moderately wavy and level-poor 3rd.
 Sandy and rocky scrub, with scrub growth of cedar, oak swamp Dogwood
 wild sage bushes, prickly pear etc.
 5th mile on S. boundary of T 1 N., R. 10 W.
 To ravine, dry 70 lks. wide, course S.W. to low rocky surface, overflows
 Charred $\frac{1}{2}$ Sec. post in a stone mound from which bears oak S 84 W
 318 lks. 8 in. dia.
 Swamp Dogwood N. 14 E. 263.4 lks. dist.
 To a stream, set in motion by recent rains
 T 1 N., R. 9 W., S.B.M.
 From the established corner to Secs. 25, 26, 35 and 36 which is a
 part of post in mound of stone partially destroyed.
 I rebuilt corner by setting granite stone 21x14x6 ins. 16 ins. in
 the ground for corner to Secs. 25, 26, 35 and 36 marked with 1 notch
 on the E. and S. edges and raised a mound of stone alongside.
 Thence I run
 North between Secs. 25 and 26
 Variation 14°27' E.

4.50 Top of low spur bears E. and descend
 Chappell's house bears N 66°10' E
 Harris house bears N 37°W
 Road bears E. and W. 7.50
 Creek 3 lks. wide course East 8.00
 Ravine 2 chs. wide, course S 60° E and ascend 12.50
 Road bears N 80° W and S 60° E. 16.00