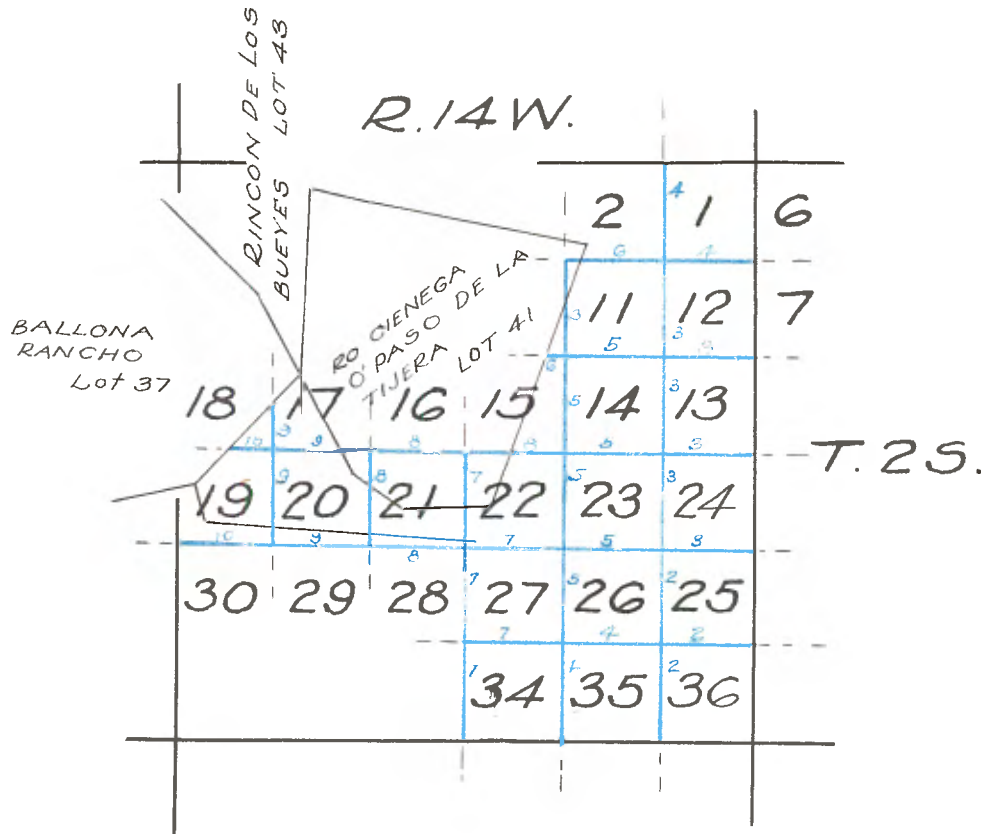


Copied from Photographic Copies
 furnished by
 U. S. General Land Office
 Washington D. C.



PRELIMINARY OATHS OF ASSISTANTS

I Ebenezer Hadley do solemnly swear that I will well and truly perform the duties of compassman according to the instructions given me and to the best of my skill and ability.

Ebenezer Hadley

Subscribed and sworn to before me this 14th day of February A. D. 1868.

George Hansen,
U. S. Deputy Surveyor.

I Charles Cole do solemnly swear that I will well and truly perform the duties of Axeman according to the instructions given me and to the best of my skill and ability.

Charles Cole

Subscribed and sworn to before me this 14th day of February 1868.

George Hansen
U. S. Deputy Surveyor.

We August Ashbiaur and George Gundersin do solemnly swear that we will level the chain upon uneven ground and plumb the tally pins whether by sticking or dropping the same that we will report the true distance to all notable objects and the true length of all lines that we may assist in measuring to the best of our skill and ability.

August Ashbiaur.
George Gundersin.

Subscribed and sworn to before me this 14th day of February 1868.

George Hansen
U. S. Deputy Surveyor.

FIELD NOTES

Of the survey of the subdivision lines in Tp. 2 S. R. 14 W. San Bernardino meridian as executed by George Hansen U. S. Deputy Surveyor under his contract dated February 7th 1868.

Subdivision commenced Feb. 14th 1868.
Subdivision completed Feb. 19th 1868.

To determine the proper adjustment of my compass for subdividing this Township I commenced at the cor. to secs. 31, 36, 1, 6 and run north on a blank line on the E. boundary of Sec. 36.

40.00
80.00

To 1/4 sec. cor.
To cor. to secs. 25 & 36 I find my compass must be adjusted to a variation of 14°15' East.

From the corner of secs. 1, 2, 35, 36 on the north boundary of the township. I run north between Secs. 35 & 36 Var. 14°15' E.

40.00

Set a gray granite stone 12 x 9 x 8 for 1/4 sec. cor. with pits as per instructions.

80.00

Set post in mound with pits as per instructions for cor. of secs. 25-26-35-36.
Land gently sloping S. W. Soil 1st. rate.

East

On Random line Bet. secs. 25 & 36 Var. 14°15' E.

40.00
80.44

Set a temporary 1/4 sec. post.
Intersect East boundary of this township at the cor. to secs. 25-30-31-36 from which I run west on a true line between secs. 25 & 36 Var. 14°15' E.

40.22
80.44

Set 1/4 sec. post in mound with pits as per instructions.
To cor. to secs. 25-26-35-36
Land level
Soil 1st rate.

North

Between Secs 25 & 26 Var. 14° 15' E.

40.00

Set a gray granite stone 12 x 9 x 8 inches for 1/4 sec. cor. with pits as per instructions.

45.00

Road to Saltworks running S. 5° W.

80.00

Set post in mound with pits as per instructions for cor. to secs. 23-24-25-26 from which bears the house of Pedro Abila N. 32° W. about 20.00 chs. dist.
Land level.
Soil 1st rate.

FIELD NOTES

East
8.00
40.00
45.00
80.21
40.10
80.21

On random line between secs. 24 & 25.
Road running south.
Set temporary 1/4 sec. post.
Bears a small house north about 3 chs. dist.
Intersect east boundary of Tp. 4 lks. north of cor.
to secs. 19-24-25-30. from which cor. I run N. 89°58' W.
on true line.
Set 1/4 sec. post in mound as per instructions.
To cor. to secs. 23-24-25-26.
Land level.
Soil 1st. rate.

North
20.00
25.00
40.00
80.00

Between secs. 23 & 24.
Enter wet bottom bearing East & West.
An old ditch bearing N. 20° E.
Set 1/4 sec. post in mound with pits as per instructions.
Set post in mound with pits as per instructions for cor.
to secs. 13-14-23-24.
Land level, soil some Alkali. 2nd rate.

East
40.00
58.00
79.85
39.92
79.85

On random line Bet. secs. 13 & 24. Var. 14° 15' East.
Set a temporary 1/4 sec. post.
Road to Los Angeles running N. & S.
Intersect East boundary of Township. 36 lks. north of
cor. to 13-24-18-19 from which cor. I run N. 89°45' W.
on true line. Var. 14°15' E.
Set 1/4 sec. post in mound with pits as per instructions.
To cor. to secs. 13-14-23-24.
Land level
Soil 1st. rate.

North
40.00
55.00
79.00
80.00

Bet. secs. 13 & 14. Var. 14°15' E.
Set 1/4 sec. post in mound with pits as per instructions.
Leave wet. land.
An old ditch bearing N. 40° E.
Set post in mound with pits as per instructions. for
cor. to secs. 11-12-13-14
Land gently sloping toward the north
Soil 1st. rate.

East
21.50
40.00
53.00
79.75
39.87
79.75

On random line Bet. secs. 12 & 13 Var. 14°15' E.
An old ditch bearing N. 42° W.
Set a temporary 1/4 sec. post.
Road to Centinela running S. W.
Intersect east boundary of township at cor. to secs.
12-13-7-18. from which cor. I run
West on true line Bet. secs. 12 & 13. Var 14°15' E.
Set 1/4 sec. post in mound with pits as per instructions.
To cor. to secs. 11-12-13-14.
Land sloping gently to the S. W.
Soil 1st. rate.

North
26.50

Bet. secs. 11 & 12 Var. 14°15' E.
A ditch bearing N. 42-1/2° W.

FIELD NOTES

38.50 A ditch bearing N. 62-1/2 ° W.
 40.00 Set 1/4 sec. post in mound with pits as per instructions.
 59.50 Road running N. E.
 73.00 Road running N. E.
 80.00 Set post in mound with pits as per instructions for cor.
 of secs. 1-2-11-12.
 Land level.
 Soil 1st. rate.

East
 12.50 On random line between secs. 1 & 12 Var. 14°15' E.
 40.00 Road running N. & S.
 79.34 Set a temporary 1/4 sec. post.
 Intersect East boundary of township at cor. to secs.
 1-6-7-12 from which cor. I run west on true line.
 Bet. secs. 1 & 12 Var. 14° 15' E.
 39.67 Set 1/4 sec. post in mound with pits as per instructions.
 79.34 To cor. to secs. 1-2-11-12.
 Land level.
 Soil 1st. rate.

North
 32.00 On random line bet. secs. 1 & 2 Var. 14°15' E.
 40.00 Enter gravel land.
 42.50 Set a temporary 1/4 sec. post.
 79.15 Road to Ballona running S. W.
 Intersect Northboundary of township at cor. 49 lks.
 east of cor. to secs. 1-2-35-36 from which cor. I run
 S. 0°21' E. on true line Var. 14°15' E.
 39.15 Set 1/4 sec. post in mound with pits as per instructions
 on north side of a road running westerly to the
 Cienga Rancho
 79.15 To cor. to secs. 1-2-11-12.
 Land level.
 Soil gravelly.
 2nd. rate.

Feb. 15th 1868.

North
 40.00 Between secs. 34 & 35 Var. 14°15' east.
 80.00 Set 1/4 sec. post in mound with pits as per instructions.
 Set post in mound with pits as per instructions for
 cor. to secs. 26-27-34-35
 Land gently rolling.
 Soil 1st. rate.

East
 40.00 On random line between secs. 26 & 35 Var. 14°15' E.
 52.25 Set temporary 1/4 sec. post.
 79.92 Road to Saltworks S. 10° W.
 Intersect N. & S. line at cor. to secs. 25 & 26 35-36.
 from which cor. I run
 West on true line bet. secs. 26 & 35.

FIELD NOTES

Var. 14°15' E.

39.96
79.92

Set 1/4 sec. post in mound with pits as per instructions.
To cor. to secs. 26-27-34-35.
Land rolling.
Soil 1st rate.

North
40.00
80.00

Between secs. 26 & 27 Var. 14°15' E.
Set a 1/4 sec. post in mound with pits as per instructions.
Set post in mound with pits as per instructions for cor. to
secs. 22-23-26-27.
Land rolling.
Soil 1st rate.

East
40.00
80.08

On random line bet. secs. 23 & 26 Var. 14°15' E.
Set a temporary 1/4 sec. post.
Intersect the N. & S. line at the cor. to secs. 23-24-25-26
from which cor. I run

40.04
80.08

West on true line between secs. 23 & 26. Var. 14°15' E.
Set 1/4 sec. post in mound with pits as per instructions.
To cor. to secs. 22-23-26-27.
Land rolling.
Soil 1st rate.

North
40.00
53.00
80.00

Between secs. 22 & 23 Var. 14°15' E.
Set 1/4 sec. post in mound with pits as per instructions.
Road to Centinela S. W.
Set post in mound with pits as per instructions for cor.
to secs. 14-15-22-23.
Land rolling.
Soil 1st rate.

East
30.00
40.00
79.84

On random line bet. secs. 14 & 23 Var. 14°15' E.
Road to Centinela running S. W.
Set a temporary 1/4 sec. post.
Intersect N. and S. line at the cor. to secs. 13-14-23-24
from which cor. I run

39.92

West on true line bet. secs. 14 & 23. Var. 14°15' E.
Set 1/4 sec. post in mound with pits as per instructions
from which bears an adobe house S. 41-1/2 W. about
40 chs. dist.

79.84

To cor. to secs. 14-15-22-23.
Land level.
Soil west half 1st rate — east half some alkali 2nd rate.

North
40.00
41.00
73.00

Between secs. 14 & 15 Var. 14° 15' E.
Set 1/4 sec. post in mound with pits as per instructions on
the N. side of a road running westerly to the Rancho
Cienga.
Ditch bearing E. and W. and enter wet land.
Cross wet bottom land and enter level grass land bearing N. W.

FIELD NOTES

80.00 Set post in mound with pits as per instructions for cor to secs. 10-11-14-15.
Land level -- Soil wet
2nd rate has some still in timber.

East
13.50 On random line between secs. 11 & 14 Var. $14^{\circ} 15'$ E.
13.50 Ditch bearing N. 44° E.
27.50 Road running N. E.
40.00 Set a temporary $1/4$ sec. post.
79.76 Intersect N. & S. line 25 lks. S. of cor. to secs.
11-12-13-14 from which cor. I run S. $89^{\circ} 47'$ W. on true
line bet. secs. 11 & 14 Var. $14^{\circ} 15'$ E.
39.88 Set $1/4$ sec. post in mound with pits as per instructions.
79.76 To cor. to secs. 10-11-14-15 .
Land level.
Soil 1st. rate.

North
24.18 Bet. secs. 10 & 11 Var. $14^{\circ} 15'$ E.
Intersect the Eastern boundary of Rancho Paso de Tijera
set a slate in mound with pits as per instructions.
Marked P. T.
40.00 Set a slate in said Rancho.
80.00 Set a slate in said Rancho cor. to secs. 1-2-3-10-11
Land level.
Soil 1st. rate.

East
28.50 On random line between secs. 2 & 11. Var $14^{\circ} 11'$ E.
29.00 Road running N. & S.
40.00 Enter field bearing N & S.
58.00 Set temporary $1/4$ sect. post.
79.75 Ditch bearing N. & S.
Intersect N. & S. line 38 lks. N. of cor. to secs.
1-2-11-12 from which cor. I run N. $89^{\circ} 44'$ W on true line.
39.88 Set $1/4$ sec. post in mound with pits as per instructions.
54.88 Offset north 8.00 chs. southeast cor. of the
Rancho Cienga.
58.00 Intersect east boundary of the Rancho Paso de Tijera
set post in mound with pits as per instructions
Land level.
Soil 1st rate.

West
9.47 Between secas. 10 & 15 Var. $14^{\circ} 15'$ E.
Set post at intersection of east boundary of Rancho
Paso de Tijera.
in mound with pits as per instructions marked P. T.
Land level.
Soil 1st rate.
Feb. 17th

FIELD NOTES

North
40.00
80.00

Bet. secs. 33 & 34 Var. $14^{\circ}25'$ E.
Set a 1/4 sec. post in mound with pits as per instructions.
Set a post in mound with pits as per instructions for cor. to secs. 27-28-33-34.
Land level.
Soil 1st rate.

East
40.00
45.00
80.50
40.25
80.50

On random line bet. secs. 34 & 27 Var. $14^{\circ}15'$ E.
Set a temporary 1/4 sec. post.
Enter rolling land bearing N. & S.
Intersect N. & S. line 16 lks. south of Cor. to secs. 26-27-~~34~~-35 from which cor. I run S. $89^{\circ}53'$ W. on true line. Var. $14^{\circ}15'$ E.
Set a 1/4 sec. post in mound with pits as per instructions.
To cor. to secs. 27-28-33-34.
Land level.
Soil 1st rate.

North
40.00
61.00
69.25
80.00

Bet. secs. 27 & 28 Var. $14^{\circ}15'$ East.
Set a 1/4 sec. post in mound with pits as per instructions.
Road to Centinela running southwest.
Centinela Creek running S. 54° W. Pure water.
Set a post in mound with pits as per instructions for cor. to secs. 21-22-27-28.
Land rolling.
Soil 1st rate.

East
21.00
21.00
30.00
40.00
60.00
80.20
40.10
80.20

On random line bet. secs. 22 & 27 Var. $14^{\circ}15'$ E.
Center of Centinela Creek running south.
Road running S. W.
Pond of water offset N. 5.00 ch.
Set a witness post for a temporary 1/4 sec. post.
Pass Pond offset south 5.00 ch. into line.
Intersect N. & S. line 85 lks. South of cor. to secs. 22-23-26-27 from which cor. I run S. $89^{\circ}24'$ W. on true line.
Set 1/4 sec. witness post in mound with pits as per instructions.
To cor. to secs. 21-22-27-28.
Land rolling.
Soil 1st rate.

North
3.10
40.00

Bet. secs. 21 & 22 Var. $14^{\circ}15'$ E.
Intersect N. boundary of Rancho Centinela. Set post in mound with pits as per instructions.
Enter public land.
Set a 1/4 sec. post in mound with pits as per instructions.
Enter Rancho Paso de Tijera.

FIELD NOTES

- 80.00 Set post in mound with pits as per instructions for cor. to secs. 15-16-21-22. Land rolling. Soil 1st rate.
-
- East
40.00 On random line bet. secs. 15 & 22 Var. $14^{\circ}15'$ E. Set a temporary $1/4$ sec. post from which bears the house of B. R. Abila S. $19-1/2^{\circ}$ W. Another adobe house S. 51° E.
- 80.80 Intersect N. & S line at cor. to secs. 14-15-22-23 from which cor. I run West on true line.
- 40.40 Set $1/4$ sec. post in mound with pits as per instructions at the intersection of the E. Bdy. of the Rancho Paso de la Tijera.
- 80.80 To cor. to secs. 15-16-21-22 Land rolling. Soil 1st. rate. Feb. 17th, 1868.
-
- West
80.00 Between secs. 21 & 28 Var. $14^{\circ}15'$ E. Set post in Rancho Centinela for cor. to secs. 20-21-28-29.
-
- North
11.40 Between secs. 20 & 21 Var. $14^{\circ}15'$ E. Intersect N. boundary of Rancho Centinela set a post in mound with pits as per instructions. Enter public land.
- 40.00 Set a $1/4$ sec. post in mound with pits as per instructions.
- 59.30 Intersect South boundary of the Rancho Paso de la Tijera set a post in mound with pits as per instructions marked P. & T. from which bears the napalero (a redwood post in the center of a large cactus patch). N. $57-1/4^{\circ}$ W. 25.40 chs. dist.
- 80.00 Set a post in mound with pits as per instructions for corner to secs. 16-17-20-21. Land sloping gently South. Soil 1st rate.
-
- East
4.50 On random line Bet. secs. 16 & 21 Var. $14^{\circ}15'$ E. A gulch running South.
- 13.00 A deep gulch running S. W.
- 40.00 Set a temporary $1/4$ sec. post.
- 62.00 Dry Arroyo running South.
- 80.40 Intersect N. & S. line at cor. to secs. 15-16-21-22 from which cor. I run West on true line.

FIELD NOTES

40.20 Set a 1/4 sec. post in mound with pits as per
instructions.
80.40 To cor. to secs. 16-17-20-21
Land, east half gently rolling -- west half hilly
Soil 1st rate.

The balance of the land in this township north
from here is included in the Rancho de la Tijera.

West
80.00 Between secs. 20 & 29 Var. 14° 15' E.
Set a post in the Rancho Centinela Cor. to secs.
19-20-29-30.

North
19.70 Between secs. 19 & 20 Var. 14° 15' E.
Intersect north boundary of Centinela set post in
mound with pits as per instructions.
Enter public land.
40.00 Set 1/4 sec. post in mound with pits as per instructions.
80.00 Set a post in mound with pits as per instructions for
cor. to secs. 17-18-19-20
Land ~~gently~~ sloping south.
Soil 1st rate.

East
35.00 On random line bet. secs. 17 & 20 Var. 14° 15' E.
A large trail running S.
40.00 Set a temporary 1/4 sec. post.
41.00 Cross deep gulch S.
56.84 Intersect the line running from Sta. 2 of the Rancho
Ballona S. 27-1/2° E. to the napalero.
80.65 Intersect N. & S. line 8 lks. South of cor. to
secs. 16-17-20-21 from which cor. I run
S. 89° 57' W. on true line.
23.81 Intersect the line running from Sta. 2 of the Rancho
Ballona S. 27-1/2 W. to the napalero on the west
boundary of the Rancho Paso de la Tijera from which
bears the same napalero
S. 27-1/2 E. 7.40 chs. With pits as per instructions
40.33 Set 1/4 sec. post in mound
80.65 To cor. to secs. 17-18-19-20
Land hilly.
Soil 1st rate.

North
35.39 Between secs. 17 & 18 Var. 14° 15' E.
Intersect the S. E. boundary of Rancho Ballona
Set a post in mound with pits as per instructions
from which bears Rock in sta. 2 of Rancho Ballona
N. 48-1/2 E. 34.00 chs.
Land hilly.
Soil 1st rate.

FIELD NOTES

The land north from here is included in the Rancho Ballona--Renein de los Bueyes and Paso de la Tijera

West
40.00 Between Secs. 18 & 19 Var. $14^{\circ} 15'$ E.
Intersect the S. E. boundary of the Rancho Ballona
course N. $48-1/2^{\circ}$ E.
Set a post in mound with pits as per instructions
Land hilly.
Soil 1st rate.

West
72.13 Between Secs. 19 and 30.
in Rancho Centinella Var. $14^{\circ} 15'$ E.
Intersect west boundary of Centinela Rancho set
a post in mound with pits as per instructions from
which bears the N. W. Cor. of the Rancho Centinela
N. $16-1/2^{\circ}$ E. 27.56 chs.
78.13 Intersect west boundary of township at cor. to
secs. 24-25-19-30
Land rolling
Soil 1st rate.

Feb. 19th 1868.

GENERAL DESCRIPTION

The public land of this township east of
Cienga and Centinela Rancho is nearly all first
rate land. The rolling land is well adapted for
the cultivation of small grain and winter crops.

The bottom land is moist enough to produce corn
or any other summer crops.