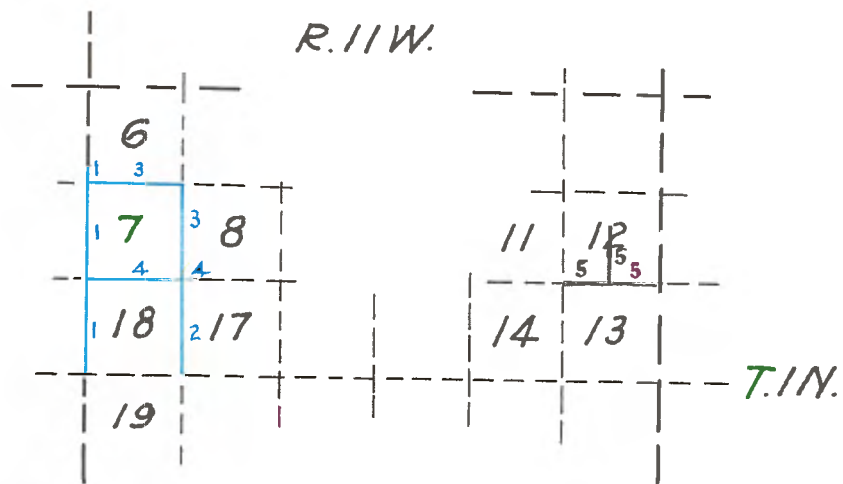


Copied from Photographic Copies
furnished by
U. S. General Land Office
Washington, D. C.



Blue lines run by John E. Jackson 1881
Red lines run by W^m H. Norway 1876

West Boundary T. 1 N. R. 11 W. S.B.M.

Survey commenced on December 12th 1881.

For the purpose of ascertaining the variation of my instrument "Browns" Transit I commence at corner, to Sections 13-18-19-24 in the rancho Santa Anita and in west boundary of this Township.

North between Sections 13 and 18.

Va. 15° East.

- 40.00 Old rock mound with decayed post the established 1/4 section corner between 13 and 18.
- 49.46 Intersect north boundary of Rancho Santa Anita at a 3 x 4 Redwood post set in ground, marked on the east face T. 1 N. R. 11 W. S. 18 and on west face S. 13 on south I. P. set in rock mound. I found also the old post decayed marks illegible. I rebuilt mound.
- The S. E. corner of the house of J. S. Vosberg bears N. 32° W. 102 lks. dist.
- Enter cultivated ground.
- J. S. Vosberg N. 84-1/2° E. and S. 84-1/2° W.
- 69.50 The left and east bank of small ravine.
- 72.00 Center of same course S. W.
- 74.00 Top of right or west bank of same.
- 80.00 To old decayed post in rock mound on the west bank of small ravine, the established corner to Sections 12-7-13-18. Post is marked T. 1 N. R. 11 W. S. 18 on S. E. face and S. 13 on S. W. face other marks illegible.
- I repaired mound.
- I find that variation of 15° East will retrace west boundary. The last 30 chains over sandy soil. Second rate.

Dec. 12, 1881
Quit work

North on west boundary 7

Va. 15° East.

- 1.00 Center of same ravine.
- 4.50 Cross wagon road N. 70° W. and S. 70° E.
- 6.00 Leave ravine and pass to east bank. Leave cultivated ground S. 80° E.
- 20.33 To old post in rock mound previously established.
- 23.00 Cross flume from N. 35° E. to S. 35° W.
- 24.00 Ravine from N. 35° E. to S. 35° W.
- 25.00 Across same and ascend.
- 36.50 Spur of mountain S. 60° W. and N. 60° E.
- 40.00 point for 1/4 Sec. cor. between 7 and 12.
- Set oak post 3 feet long and 3 in. square with charred stake 18 in. in the ground for 1/4 sec. cor. marked 1/4 S. on the east face.
- Pits impracticable.
- Built rock mound around post 2-1/2 feet dia. 18 in. high.

W.B.P. 1 N. R. 11 W. S.B.M.

76.00 Large ravine from N. E. to S. W.
 80.00 Set Oak post 3 feet long 3 in. square with charred post 8 in. in the ground for corner to Sections 1-6-12-7 marked post on N.E. face T. 1 N. R. 11 W. S. 6 on S.E. face S. 7 on S.W. face T. 1 N. R. 12 W. S. 12 and on N.W. face S. 1 five notches on the south corner and six notches on the east corner.
 Pits impracticable.
 I made mound of rock around post 2-1/2 feet in dia. and 18 in. high.
 Last mile over rough mountain.

North between 1-6

5.00 Set Oak post 3 feet long 3 in. square. Va. 15° East.
 Quit work
 Dec. 13th 1881.

John E. Jackson
 U. S. Dep. Surveyor.

December 14th 1881

From the established corner to Sections 17-18-19 and 20. North between 17 and 18.

39.05 Intersect the north boundary of Rancho Santa Anita a Redwood post 2 in. by 4 in. and 3 feet out of the ground marked on S. W. face T. 1 N. R. 11 W. and on N.W. face S. 18 S.E. face S. A. N. E. face S. 17.
 Enter cultivated ground.
 Mr. Reed S. 62° E. and Mr. Learned N. 62° W.
 40.00 Set Redwood post 3 feet long 2 in. square 18 in. in the ground with charred stake. I marked post 1/4 S. on east face. Pits being impracticable.
 I built a rock mound 2-1/2 feet dia. and 18 in. high around post for 1/4 sec. cor. between Sections 17 and 18.
 46.00 Leave cultivated ground of Mr. Reed east.
 52.00 Leave cultivated ground of Mr. Learned west.
 54.40 Feet of Range of mountain east and west.
 55.75 Center of reservoir is 40 lks. west.
 58.30 Cross head of old tunnel N. 80° E.
 59.00 Small ravine from N. 20° E. to S. 20° W.
 60.00 Set Sycamore post 3 feet long 3 in. square, marked 1/8. The bottom of the ravine is 10 lks. east
 Thence ascend steep mountain.
 75.14 Crest of a spur falls to S. 45° W.

T. 1 N. R. 11 W. S.E.M.

80.00 Set Oak post 3 feet long 3 in. square with charred stake 18 in. in the ground for the corner to Sections 7-8-17-18 marked the post on N.E. face T. 1 N. R. 11 W. S. 8 on S. E. face. S. 17 on S.W. face. S. 18 on N.W. face. S. 7 four notches on south corner and five notches on the east corner.
Pits being impracticable I built rock mound around the post 2-1/2 feet dia. and 18 in. high.
Land rough mountain for last 20 chs.

Dec. 15th 1881

Thence north between 7-8

Va. 15° East.

40.00 Set Oak post 3 feet long and 3 in. square with a charred stake 18 in. in ground marked 1/4 S. on the east face for the 1/4 sec. cor. between 7-8.

Pits being impracticable I built around the post mound of rock 2-1/2 feet dia. and 18 in. high.

80.00 Set Oak post 3 feet long and 3 in. square with charred stake 18 in. in the ground.

Marked on the N. E. face T. 1 N. R. 11 W. S. 5 on the S.E. face S. 8 on S. W. face. S. 7 on N.W. face. S. 6 five notches on the south corner and five notches on the east corner for corner to sections 5-6-7-8.

Pits being impracticable.

I built rock mound 2-1/2 feet dia. and 18 in. high around the post.

On west slope of steep mountain.

Last mile over rough mountain.

In consequence of the rough nature of the ground I find that it is impracticable to continue further north or east.

From established corner 5-6-7 and 8.
West between 6 and 7

Va. 15° East.

21.00 Cross deep ravine 12 lks. wide with water course from north to south. Then ascend.

40.00 Set mahogany post 3 feet long 3 in. square with charred stake 18 in. in the ground marked on the north face 1/4 S. for 1/4 sec. cor. between Sections 6-7.

Pits being impracticable.

I built around the post rock mound 2-1/2 feet dia. 18 in. high.

70.50 Small trail S. 20° W. and N. 20° E.

82.00 To corner Sections 1-6-7-12 in the west boundary of this Township. An Oak post 3 feet long 3 in. square with charred stake, marked on the N. E. face T. 1 N. R. 11 W. S. 6 on the S. E. face S. 7 on the S. W. face. T 1 N. R. 12 W. S. 12 and on N.W. face S. 1 five notches on south corner and six notches on the east corner with mound of rock around post 2-1/2 feet dia. 18 in. high.

Quit work

Dec. 15th 1881.

T. 1 N. R. 11 W. S.B.M.

From established corner to Sections 7-8-18-17
West between 7-18.

- 40.00 Va. 15° East.
Set mahogany post 3 feet long and 3 in. square with a charred stake 18 in. in the ground, marked 1/4 S. on the north face for corner between 7-18.
Pits being impracticable I built around the post a rock mound 2-1/2 feet dia. and 18 in. high.
Then descend along west slope of the mountain.
- 62.00 Cross ravine course from north to south.
- 64.80 Top of west bank of last ravine enter cultivated ground of J. S. Vosberg N. 10° E. and S. 10° W.
- 66.72 Cross small flume with water from N. 12° E. to S. 12° W.
- 81.80 To old rock mound with post the established corner to Sections 7-12-13-18 in the west boundary of this Township.
Land 5th rate, principally rough mountain.

From the established corner to Sections 7-8-17-18.
East between 8 and 17

- 20.00 Va. 15° East.
Set Oak post 3 feet long and 3 in. square with charred stake 18 in. in the ground, marked 1/8 on south face.
Made mound of rock around post 2-1/2 feet dia. 18 in. high.
The nature of the ground prevents running the line farther east.

Quit work

Dec. 16th 1881.

John E. Jackson
U. S. Dep. Surveyor.

T. 1 N. R. 11 W. S.B.B. & M.

Chains Field notes of the subdivision lines in Township 1 North
Range 11 West San Bernardino base and Meridian by Wm. H.
Norway Deputy Surveyor under contract with U. S. Surveyor
General of California bearing date

From the cor. to sections 7-12-13 and 18 on the
eastern boundary of the township I run west on a true line
between secs. 12 and 13.

Var. 14-1/4° E.

over rough hills.

- 33.00 Cross near head of gulch 20 lks. south thence ascend.
- 40.00 Summit of a high bluff course N. and S.
Set a fir post 3 x 3 in. 3 feet long in a mound of rocks
and pits as instructed for 1/4 sec. cor. thence descending.
- 52.00 Cross a creek 10 lks. wide course S. 20° W.
Grants house down creek about 20.00 chs.
- 52.90 Cross a wagon road leading up canada.
- 53.15 To foot of a high rough and rocky ridge too rough to measure
further on this line.
Set an Klder post 3 x 3 in. 3 feet long in a large mound of
rocks as instructed for witness to cor. to secs. 11-12-13
and 14 from which bears Live Oak 20 in. dia. S. 55° W.
64 lks. dist.
I here offset north 10.00 chs. thence west 15.00 chs. to a
point on high hill thence south 10.00 chs. to line between
Secs. 12 and 13.
- 68.15 West of the cor. to secs. 11-12-7 and 18 I continue west
from this point.
- 80.00 Counting the distance from cor. to Secs. 11-12-7 and 18.
Set a sand rock 10 x 20 x 36 in. in a mound of rocks as
instructed for cor. to secs. 11-12-13 and 14.
Land very rough some good land to the south in small pieces.
Oak timber in canadas.

The line between Secs. 11 and 12 is too rough to
measure and in order to survey the S. W. 1/4 of Sec. 12
I begin at the 1/4 cor. between secs. 12 and 13 and run
North on 1/4 line through sec. 12.

Var. 14-1/4° E.

ascending over high rolling hills.

- 40.00 Set a redwood post 3 x 3 in. 3 feet long in a mound of rocks
and pits as instructed for center 1/4 sec. cor.
Land rough -- 3rd rate -- with some Oak timber in canada.
This is all the land in this township which was not surveyed
in the former contract.

May 10th 1876.
