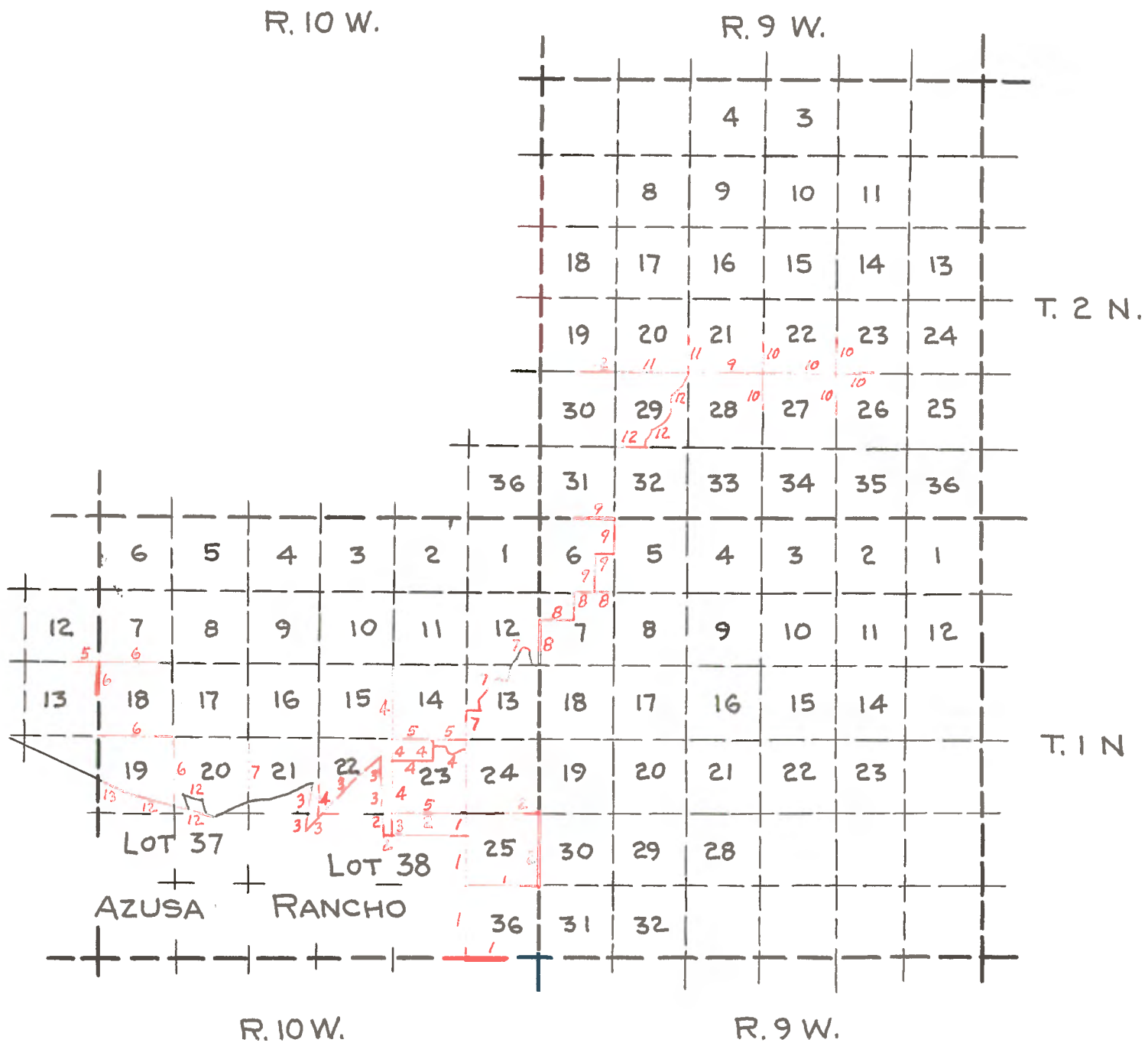


See 9258
For Official Notes

THESE NOTES COPIED FROM W. H. NORWAY'S
ORIGINAL FIELD BOOK LOANED TO COUNTY
SURVEYOR BY HOWARD McCURDY

(These notes are not to
become public records)



R. 10 W.

R. 9 W.

Subdivision of Fractional Township 1 N., R. 10 W.

- Beginning at 1/4 Sec. Cor. on South boundary of Sec. 36.
and run west - to correct my variation use Var. 14° E.
- 3.25 Cross water ditch course south.
39.97 Intersect 1.03 links north of a mound supposed to be the S.W.
corner of Sec. 36, on base line 80 chains W. of Township corner,
thence N. on West boundary of Section 36.
Var. 13° 30' E.
- 40.00 Set a walnut post 3"x3" - 3' long in mound and pits as instructs
for temporary 1/4 Sec. Cor. in West edge of cornfield.
52.50 Leave cornfield and enter orchard.
62.30 Cross pole fence - N. 78° E.
64.72 Cross pole fence - N. 78° E.
69.00 A house of Mr. Casey about 30 links E. of line.
79.97 Intersect Section Line between Secs. 25 and 36 - 91 links E. of
corner to Secs. 25, 26, 35 and 36 - stake and pits set by Golds-
worthy. Thence N. on West boundary of Sec. 25.
Var. 13° 13' E.
- 25.00 Foot of hill and ascend.
36.50 Summit of ridge E & W. and descend.
40.00 Foot of hill, enter small valley. Set an Oak post 3"x3"x3'
in mound of rocks as instructed for temporary 1/4 Sec. Corner.
59.54 Intersect 1.71 chs. East of corner to Sections 25 and 26.
(Continuation of this line copies from pg. 20)
From Corner #1 of Azusa ranch I run
N. between Secs. 25 and 26.
Var. 14 1/4° E. Ascending.
- 3.23 Foot of mountain.
18.00 Summit of ridge - Co. S.W. & N.E.
20.00 Set an oak post 3"x3"x3' long in mound of rocks as instructed
on steep side hill facing W. for corner to Secs. 23, 24, 25, 26
(Copied from Page 3) East bet. Secs. 25 and 36 - T1N, R10 W.
From the corner to Sections 25, 26, 35 and 36 on East bdy. of
Rancho Azusa I run
East on random line between Secs. 25 and 36.
Var. 14° 15' E.
- 5.50 A house 1.75 chs. N. of line.
15.50 A house about 80 links N. of line.
16.00 Cross road N.E. and S.W.
20.50 A house 30 links S. of line.
40.00 Set a redwood post for temporary 1/4 Sec. Cor.
41.50 House about 7.00 chs. S.
79.00 West bank of Creek S.W.
80.00 Set a walnut post 3"x3"x3 1/2' long in mound in arroyo - dry bed for
corner to Secs. 25, 30, 31 and 36 on East boundary of Township
from which a 24" live oak bears S. 65° 30' E. - 1.42 distant.

North on the East boundary of Sec. 25, T. 1 N., R. 10 W.
from cor. to Secs. 25, 30, 31 and 36. (Copied from Page 4)

I run

11.50 N. on East boundary of Sec. 25. Var. $14^{\circ} 15'$ E.
40.00 Chs. Cross road E. and W.
80.00 Chs. Set a post for $1/4$ Sec. cor. and leave a flag.
Chs. Set a sycamore post $3"x3"x3\frac{1}{2}'$ in a mound of rocks as instructed for cor. to Secs. 19, 24, 25 and 30, from which old stake for cor. bears N. 65° W. - 86 links distant. An old bearing tree, 10" sycamore, bears S. 70° W. - 22 links distant.

West bet. Secs. 24 and 25 T. 1 N - R. 10 W. (Copied from Pg.5).
From cor. to Secs. 19, 24, 25 and 30, I run

West bet. Secs. 24 and 25. Var. $14^{\circ} 15'$ E. - Ascending.

3.50 Chs. - foot of small hill - ascend.
25.00 Chs. - top of hill descend.
27.75 Chs. - house 50 links N. of line.
28.00 Chs. - E. bank of dry creek bottom course S.W.
28.50 Chs. - creek dry S.W.
36.75 Chs. - foot of hill - ascend.
40.00 Chs. - set an oak post $3"x3"x3'$ long in mound of rocks on steep side hill facing East.

Thru N. $1/2$ Sec. 26, T. 1 N., R. 10 W. (Copied from Pg.6)

From the cor. No.1 of Rancho Azusa I run along line of same S. 89° W.
Var. $14^{\circ} 15'$ E.

13.00 Chs. House about 6.00 chs. N. of line.
23.75 Chs. Cross dry wash course South.
50.50 Chs. Cross road (N.W. & S.E.)
60.00 Chs. Foot of hill, enter valley.
64.31 Chs. Cross brush fence course S. 8° E.
65.00 Chs. Cross road (S.W. & N.E.)
80.01 Chs. Set a willow post $3"x3"x3\frac{1}{2}'$ for cor. to Fractional Secs. 26 and 27 in mound of earth and pits.

83.50 Chs. Set an alder post $3"x3"x3'$ in earth mound for cor. No.15 of Rancho Azusa from which a 20" alder bears S. 47° W. - 2.00 chs. dist.

From corner #15 of Rancho Azusa I run

N. 7° W. along ranch line Var. $14^{\circ} 15'$ E.

21.51 Chs. Set a post for temporary corner to Fractional Secs. 22 and 27.
40.00 Chs. Leave a mound of rocks for Corner #14 of Rancho Azusa.

North Bet. 26 and 27 - T. 1 N. R. 10 W. (Copied from Pg.7)

From the corner to Fractional Secs. 26 and 27 I run

North bet. Secs. 26 and 27. Var. 14° 15' E.

9.20 Foot of hill - ascend.
20.00 Edge of bluff - descend.
21.41 Set alder post 3"x3"x3' long in mound of rocks as instructed for corner to Secs. 22, 23, 26 and 27.

Along Ranch Line (From Pg.8)

From Corner #14 of Rancho Azusa I run

N. 18° 15' W.

10.00 Cross water ditch course S.
22.50 Leave mound of rocks for corner #13 of Rancho Azusa thence N. 7° 15' E.
9.25 South bank of San Gabriel River (West)
19.50 The point for corner #12 of Rancho line; not finding any corner I leave a mound of rocks in River bottom.

Thence along Rancho line S. 46½° W. (From Pg.10)

8.00 South bank of River (West).
71.90 S.W. bank of river (S. 37° W.)
85.93 Set a mound of rocks and Cedar post as instructed for corner to fractional Sections 22 and 27 in rocky bed of San Gabriel River from which Henry Roberts' house bears N. 56° 45' E. From this point I run West Var. 14° 15' E.

6.80 And set a live oak post in mound of rocks, as instructed for corner to fractional Secs. 21, 22, 27 and 28 in bed of River.

South bet. Secs. 27 and 28. Var. 14° 15' E. (From Pgs.10 & 11)

6.45 To line of Rancho Azusa - Henry Dalton portion and set a post and mound of rocks as instructed for corner to fractional Secs. 27 and 28 in bed of river.

From this corner I run along the boundary of said Rancho S. 46½° W.

Var. 14° 15' E.

15.10 To corner #11 of said Rancho; not finding any corner, I establish one by building a large mound of rocks. From this corner I run along the line of Rancho Azusa del Duarte N. 6° E. - Var. 14° 15' E.

4.25 Cross road (E. & W.)
16.15 Intersect the line bet. fractional Sections 21 and 28 and set an alder post in mound of rocks as instructed for corner to fractional Secs. 21 and 28 in bed of river.

From Pg.12) From this corner I continue along line of said Rancho N. 6° E. Var. 14° 15' E.

30.50 Cross ditch. Course W.
31.75 N. bank of River (S.W.) and ascend foot hill.
57.60 The point for corner to Rancho Azusa del Duarte. Not finding any corner, I establish one by leaving a large granite rock.

North bet. Secs. 21 and 22, T. 1 N., R. 10 W. (From Pg. 13)
From the corner to Secs. 21, 22, 27 and 28, I run
North bet. Secs. 21 and 22 Var. 14° 15' E.

- 15.40 Cross Zanja E. and W.
31.00 Ascend hill (W. & N.E.)
37.00 Set a Toyon Post 3"x3" in large mound of rocks at the foot of a rocky ledge for witness post to 1/4 Sec. cor. as the true corner falls on a rocky ledge not a suitable place to build a mound. L. M. Rasmussen's house bears N.E.

North bet. Secs. 22 and 23 (From Pg. 14)

From the corner to Secs. 22, 23, 26 and 27, I run N. bet. Secs. 22 and 23. Var. 14° 15' E.

Ascending along West slope of steep hill.

North bet. Secs. 22 and 23, T. 1 N., R. 10 W. (From Pg. 15)

- 40.00 1/4 Cor. falling on steep side hill I mark a 2 foot alder tree. W.P. for 1/4 Cor. 3 links West of line.
50.22 3 links west.
50.00 point of hill and cross zanja (S.W.)
50.50 Cross wagon road course S.W. and N.E.
55.30 Cross San Gabriel River 50 lks. wide.
62.20 North bank of river and ascend steep side hill.
77.40 Set an alder post 3x3 in mound of rocks as instructed marked as W.P. for corner to Secs. 14, 15, 22 and 23 on edge of steep bluff facing East.

North bet. Secs. 14 and 15, T. 1 N., R. 10 W. (From Pg. 16)

Var. 14 $\frac{1}{4}$ ° E.

- 7.00 From true corner on side hill going N. Cross gulch S.E. then ascend.
15.31 Summit of high peak thence along on side hill from West.
40.00 Set Sycamore post in rock mound facing West for 1/4 cor.
80.00 Set oak post 3"x3" corner to Secs. 14, 15, 22 and 23 on side hill facing N.W. Land rough - timber in Canada Sycamore, Alder, Spruce and oak.

From Pg. 16A - Subdivision of Sec. 23 T. 1 N., R. 10 W.

From a point 59.15 chs. N. of corner to Secs. 22, 23, 26 and 27 I run up San Gabriel Valley, East 40.00 chs. and N. 20.85 chs. to 1/4 Sec. cor. From a point 6.85 chs. south of 1/4 Sec. Cor. bet. Sec. 14 and 23 I run

- | | | |
|-----------------|------------|-----------------|
| 1. N. 83-1/2 E. | 17.00 chs. | left bank river |
| 2. S. 66 E. | 14.00 chs. | near right bank |
| 3. S. 76-1/2 E. | 5.60 chs. | " " " |
| 4. N. 48-1/2 E. | 7.00 chs. | " " " |

East bet. Secs. 14 and 23, T. 1 N., R. 10 W. (From Pg. 17)

- 5.00 Cross gulch course south, thence along south edge of Table lands and cultivated fields.
- 40.00 Set a cottenwood post 3x3 in a large mound of rocks on side hill facing south for 1/4 Sec. Cor., thence along south slope of rocky hill.
- 65.00 Summit of spur. N.W. & S.E. and descend.
- 69.50 Enter valley on San Gabriel.
- 76.00 Cross San Gabriel River 40 links wide course S.E.
- 77.50 Enter field course N.W. & S.E.
- 80.00 Intersect the corner to Secs. 13, 14, 23, 24.
Land along line very rough, valley mostly overflow with sycamore, cottonwood and alder timber.

North bet. Secs. 23 and 24, T. 1 N., R. 10 W. (From Pg. 18)

Ascending.

- 40.00 Set an oak post 3"x4" on side hill facing South for 1/4 corner.
- 50.00 Summit of spur S.W. and N.E. and descend.
- 60.00 Enter valley of San Gabriel River.
- 61.50 San Gabriel River 40 links wide (S.W.)
- 72.50 San Gabriel River 40 links wide (S.E.)
at crossing of wagon road.
- 76.00 Enter field (N.W.) (S.E.)
- 80.00 Set sycamore post 4x4 in large mound of rock for corner to Secs. 13, 14, 23 and 24, in center of field a house bears S. 64° E. about 7.00 chains distant.

Land rough with scattering timber. Soil 2nd and 3rd rate.
East bet. Secs. 23 and 26.

Var. 14° 15' E. (From Pg. 21)

- 5.75 Edge of bluff thence over table land.
- 12.00 W. bank of dry wash and descend into same.
- 13.00 E. bank of same course S.W. thence over broken ridges.
- 28.30 Cross ravine course South water about 5.00 chs, N. of line and ascend.
- 30.15 Summit of spur N. & S., descend.
- 34.00 Cross ravine S.W. and ascend.
- 40.00 Set an oak post 3"x3"x3' long in mound as instructed for 1/4 cor. on summit of ridge S.W. & N.E.; descend.
- 63.50 Cross ravine S.W., ascend.
- 80.00 The corner to Secs. 23, 24, 25 and 26.

East bet. Secs. 12 and 13, T. 1 N., R. 11 W. (From Pg. 22F)

Survey for J. M. Butler.

Var. 14° 25' E. - from 1/4 Sec.

on Sec. line bet. Secs. 12 and 13, T. 1 N., R. 11 W.,
bet. Secs. 12 and 13. I proceed to a point on line and

calculation to be 45.89 chs. east of flag or 1/4 cor., being 5.89 chs. East of range line bet. Ranges 10 and 11. I then run West 5.89chs. and set an oak post 4"x4"x3' long in mound of rocks as instructed on side hill facing South on North side of sawpit Canyon for corner to Secs. 7, 12, 13 and 18, from which a gray granite rock 4 feet square bears N. 86° E. 22 links distant.

(From Pg. 22 G) From corner to Sections 7, 12, 13 and 18, I run South on East boundary of Sec. 18 bet. Ranges 10 and 11.

8.50 Cross sawpit creek 10 links wide course N.W. and ascend.
10.00 J. M. Butler's house about 3.00 chains east.
30.00 Summit of ridge descend.

East bet. Secs. 7 and 18, T. 1 N., R. 10 W. (From Pg. 22 H)
From the corner to Secs. 7, 12, 13 and 18, I run East bet. Secs. 7 and 18. Var. 14° 25' E.
Over mesa or table land of J. M. Butler.

18.00 W. side of steep bluff.
19.00 E. bank of same. (Course N.)
25.00 Cross saw pit creek (course S.E.) ascend.
40.00 Set an oak post 3"x3" 3 1/2' in mound of rock, as instructed for 1/4 cor., ascending steep side hill.
80.00 Set an oak post on spur (course N.E. & S.W.) for cor. to Secs. 7, 8, 17 and 18.

North bet. Secs. 19 and 20, T. 1 N., R. 10 W. (From Pg. 25)

Var. 14° 15' E.

Start line at

9.22 N. of the cor. to Secs. 19, 20, 29 and 30.
12.20 Counting stations from Section Corner cross near head of gulch.
14.30 Summit of spur (S.W. & N.E.)
17.00 Enter valley (N.E. - S.W.)
22.50 Cross gulch and leave valley (N.E. & S.W.)
26.35 Summit of spur (S.W. - N.E.)
30.50 Enter gulch (S. 15° W.) thence up same
32.00 Leave gulch
37.50 Summit of low spur (S.W. - N.E.)
40.00 Set oak post 4x4 in mound of rocks on side hill facing West for 1/4 Sec. Cor. thence along W. slope.
47.00 Cross gulch (S.W.)
80.00 Set an alder post 4x4 in mound of rock on side Hill facing N.W. for corner to 17, 18, 19 and 20. Land very rough along line. S. 1/2 of line mostly 1st rate, N 1/2 2nd and 3rd rate.

West bet. Secs. 18 and 19, T. 1 N., R. 10 W. (From Pg. 25A)
Along South slope of mountain.

17.00 Cross gulch.
40.00 Set an alder post 3x3 in rock mound for 1/4 cor.
57.00 Cross gulch.
78.50 Intersect West boundary of Township 20 links south of corner to Secs. 18 & 19.

Land rough along line, mostly 3rd rate.
N. bet. Secs. 20 and 21. (From Pg. 27)

Var. 14° 25' E.

- 89 Links. Intersect N. line Rancho Azusa Duarte leave valley and ascend
- 40.00 Set an oak post 3 x 3 for 1/4 cor.
- 75.00 Summit of ridge (N.W. & S.E.)
- 77.00 Descend.
- 80.00 Set rock 10x16x20 in rock md. for corner to Secs. 20, 21, 16 & 17.
Land rough 2nd & 3rd rate, timber in canadas.

North bet. Secs. 13 and 14, T. 1 N., R. 10 W. (From Pg. 28)

From the corner to Secs. 13, 14, 23 and 24, I run north between
Secs. 13 & 14. Var. 14 1/4° E.

- 5.50 Leave River Valley and ascend steep spur of mountain.
- 15.50 Summit of spur (N.W. & S.E.) Descend.
- 16.50 Leave point for traverse on summit of spur and run East.
- 27.00 Cross river and ascend steep bluff.

East 15.50 chs.
N. 4° W. 14.50 chs.
N. 20° E. 19.78 chs.
East 1.00 chs.
N. 30° E. 6.45 chs.
S. 60 1/2° E. 1.19 chs.
S. 58° E. 19.50 chs.
N. 45° E. 7.00 chs.
North 6.12 chs.
N. 15 E. 12.00 chs.
North 11.50 chs.

which makes by calculation to be from cor. to Secs. 13, 14, 23 and 24. North 78.69 chs. and East 51.10 chs. I then ran North 1.31 chs. to the Sec. line between Secs. 12 & 13 and set an alder post 4"x4"x3 1/2' in a mound of rocks as instructed for W.P. to 1/4 Corner 11.10 chains East of 1/4 Cor. at foot of perpendicular bluff on W. side of River Valley from which a 16" live oak bears N. 25° E. 36 links, an 8" live oak bears S. 42 1/4° W - 36 links.

then continue traverse from W.P.

- East 1.50
- N. 52. 1/4 18.42
- East 11.14
- South 8.50
- East 1.75
- South 2.84 and set a sycamore post 4"x4"x3 1/2' in a large mound of rocks as instructed for corner to Secs. 7, 12, 13 and 18 on East boundary of Twship in San Gabriel River Valley from which a 16" live Oak bears S. 32° W. 1.95 chains.
- 54.25 cross San Gabriel River course S.W. and ascend steep hill.
- 71.50 Summit of spur N. & S.
- 76.00 foot of hill enter River Valley.

and on 18" red oak bears
S. $48\frac{1}{2}$ E. distant 3.23 chs.

North on East boundary Sec. 12, T. 1 N., R. 9 & 10 W. (From Pg. 31)

7.00 Cross river course West 50 links wide.
16.50 Leave valley and ascend steep mountain side.
32.50 Summit of ridge N.E. & S.W. and descend.
38.00 Gulch.
40.00 Set an oak post 3"x3"x3' in mound of rocks, as instructed for 1/4
Sec. Cor. on ridge facing East.
48.50 Cross ravine (S.E.)
63.50 Summit brushy spur (N.E.)

East thru Sec. 7, T. 1 N., R. 9 W. (From Pg. 32)

From 1/4 Sec. Cor. on West boundary of Sec. 7
20.00 Enter San Gabriel Canyon
29.50 Leave San Gabriel Valley and ascend steep side hill.
40.00 Point for center of Sec. 7 falling on steep side hill I set a
sycamore post 4 x 4 in mound of rock 6.64 chs. North at foot of
edge of bottom of San Gabriel River (N.E.) W.P. for 1/4 Cor.
from which a 12" sycamore bears S. $48\frac{1}{2}$ W. 88 links.

North from Center of Sec. 7
6.64 W.P. Enter San Gabriel valley (N.W. - S.E.)
21.50 San Gabriel River
22.10 Leave valley and ascend
34.00 Cross gulch (S.W.)
40.00 Set a sycamore post 3"x3" on steep side hill in rock mound for
1/4 Cor. between Secs. 6 & 7.
Land mineral and Timber live oak, sycamore and cottonwood.

East between Secs. 6 & 7, T. 1 N., R. 9 W. (From Pg. 33)

East from 1/4 Cor. bet. Secs. 6 & 7.
6.50 Enter valley of San Gabriel river.
12.35 To right bank San Gabriel River.
13.50 Over same.
25.50 Leave valley and ascend.
40.00 Set a sycamore post 4x4 in mound of rocks on steep side hill
facing W. for corner to Secs. 5, 6, 7 and 8.
Finding I can't run North from this point I run West between
Secs. 6 and 7.
20.00 Set a sycamore post 3x3 in mound of rocks on E. edge of river
for 1/8 Sec. Cor. from which a 12" sycamore bears $3-3/4^{\circ}$ E.,
1.45 chains.
7.

North thru East 1/2 of Sec. 6, T. 1 N., R. 9 W. (From Pg.33 & 34)

- 5.50 Leave valley and ascend point of hill (N.W.)
- 21.50 Enter River bottom at narrow part (Course N.W. & S.E.)
- 31.00 Leave valley and ascend.
- 40.00 Set an oak post in rock mound on side hill facing N.W. for 1/8 corner; thence running Eastward.
- 14.00 Leave hill and enter river bottom.
- 20.00 Set a sycamore post 4"x4"x3 1/2' in mound of rocks on right bank of river for 1/4 cor. between Secs. 5 and 6 from which a 24" sycamore bears S. 85° W. - 2.13 chs. and a 24" live oak bears N. 15 1/2° W. - 2.13 chs.

North bet. Secs. 5 and 6, T. 1 N., R. 9 W. - (From Pg.35)
North from 1/4 Sec. Cor. bet. Secs. 5 and 6.

- 13.00 Cross San Gabriel River 40 links wide.
- 15.00 Leave valley and ascend hill.
- 40.00 Set an oak post 4x4 in rock mound on summit of Hill (E. & W.) Corner to Secs. 5 and 6 on N. boundary of Township.

West on N. bdy. of Sec. 6, T. 1 N., R. 9 W. (From Pg.36)

- 28.00 Enter valley of San Gabriel at point of big bend.
- 35.50 Cross San Gabriel river 40 links wide.
- 37.00 To the foot of high rocky ridge; point for 1/4 Sec. Cor. falling on side hill, set a sycamore post 4"x4"x4' in mound of rocks at foot of high crest. W.P. to 1/4 Cor. from which 6" alder bears S. 84 E. 39 links and 6" Alder bears N. 46° E. - 27 links.

East on line bet. Secs. 21 & 28, T. 2 N., R. 9 W. (From Pg.37)

Commencing at Sta. #1 of Baker & Austin Claim and run east along South side of San Gabriel River on side hill facing North.

- 35.00 Cross gulch (N.W.)
- 40.00 Set a sycamore post 3x3 in mound of rocks on steep side hill facing N. for 1/4 Cor. from which a 24" oak bears S. 89° E. - 35 links distant.
- 70.00 Descend into San Gabriel Valley.
- 80.00 Point for cor. to Secs. 21, 22, 27 and 28 falling on steep side hill I set a sycamore post 4x4 in a large mound of rocks in edge of water 2.80 chs. East for W.P. from which a 30" live oak bears N. 29° E. - 25 links.

East between Secs. 22 and 27, T. 2 N., R. 9 W. (From Pg. 38)

- 2.80 Foot of hill - W.P. to Sec. Cor. Enter Valley San Gabriel

- 14.50 San Gabriel River 40 links wide. (.S.W.)
- 20.00 Sta. #2 of Fergerson Claim.
- 26.50 San Gabriel River 40 links wide. (S.W.)
- 40.00 Set a cottonwood post 3x3 in mound of rocks at foot of gravel wash from which a 6" sycamore bears S. 6-1/2° W. 29 links.
- 60.00 Corner of Mining claim and San Gabriel River 40 links wide (N 80° W)
- 72.00 Leave valley of San Gabriel River and ascend.
- 80.00 Set a sycamore post 4"x4"x3' in mound of rocks on side hill facing West for corner to Secs. 22, 23, 26 and 27.

North bet. Secs. 22 and 23, T. 2 N., R. 9 W. (From Pg.39)

- 2.50 Cross near head of gulch (W)
- 7.00 Summit of Spur (E. & W.) then along on side hill.
- 40.00 Set oak post in rocks for 1/4 cor.

Too rough to run farther.

- East bet. Secs. 23 and 26, T. 2 N., R. 9 W. (From Pg. 40)
- Along on South slope of mountain.
- 40.00 Set oak post for 1/4 cor.

- South bet. Secs. 26 and 27, T. 2 N., R. 9 W. Descending
- 10.00 Enter valley
- 13.00 Enter river bottom, a house about 5.00 West.
- 20.00 Sta. #2 - Graham & Cecil Claim.
- 32.00 Summit of spur.
- 40.00 Set an oak post 3x3 in mound of rocks on side hill, facing S.E. for 1/4 cor. Too rough to run farther.

-
- North bet. Secs. 21 and 22, T. 2 N., R. 9 W. (From Pg.41)
 - Descending.
 - 4.00 Enter valley of San Gabriel River S.W.
 - 10.00 Cross San Gabriel River.
 - 16.00 Leave valley and ascend.
 - 35.00 Summit of high ridge E. & W. and descend.
 - 40.00 Set oak post in rock mound for 1/4 cor.

Too rough to run farther.

-
- South bet. Secs. 27 and 28, T. 2 N., R. 9 W.
 - Along on side hill
 - 26.00 Summit of spur E. & W. then descend.
 - 40.00 1/4 Cor. on side hill facing South.

Cor. to Secs. (20,21,28 and 29) (From Pg.42)

From Baker and Austin Cor. #2 I run S.45° W. 7.07 chs. and set an

alder post 4 x 4 in a large mound of rocks for corner to Secs. 20, 21, 28 and 29 in center of valley of San Gabriel River.

North bet. Secs. 20 and 21.

3.00 Cross San Gabriel River 40 links wide.
 4.00 Ascend steep side hill.
 15.00 Summit of hill (S.W. - N.E.)

This line not run further.

West bet. Secs. 20 and 29, T. 2 N., R. 9 W. (Pg. 43 and 44)

5.00 Cross San Gabriel River (S.W.)
 8.50 Leave valley and ascend.
 13.00 Cross gulch (S) thence ascend by triangulation.

S. 60° W.	29.00	- S.	14.50	W.	25.11
N. 55½° W.	8.64		<u>4.89</u>		<u>7.09</u>
			19.39		32.20
N. 38° W.	5.00		<u>3.94</u>		<u>3.08</u>
			23.33		35.28
N. 55° W.	7.00		<u>4.01</u>		<u>5.73</u>
			27.34		41.01
North	8.17		8.17		
West	12.00				<u>12.00</u>
			<u>35.51</u>		53.01
North	4.49		<u>4.49</u>		
			40.00		

N. 30¼° W.	15.00		12.96		<u>7.56</u>
					60.57
N. 86° W.	17.00		<u>1.19</u>		<u>16.96</u>
			14.15		77.53
S. 72° W.	3.00		<u>.93</u>		<u>2.85</u>
			13.22		80.38
S. 74° W.	11.69		<u>3.22</u>		<u>11.22</u>
			10.00		
S. 57° W.	10.46		<u>5.70</u>		<u>8.77</u>
			4.30		19.99
South	4.30		<u>4.30</u>		
			0.00		

40.00 Set Sycamore post on side hill facing south at edge of Rocky cliff in mound of rocks for 1/4 cor.
 48.00 Enter valley of North fork.

- 50.00 Cross N. Fork 40 links wide. (S.E.)
- 60.00 Set a sycamore post 3x3 in mound of rocks at foot of high mountain West edge of mesa for 1/8 cor. from which a 20" live oak bears N. 88-3/4° E. - 4.81 chs. distant.
- 70.00 Summit of spur and descend.
- 80.00 Will fall on side hill sloping W.

West bet. Secs. 19 and 30, T. 2 N., R. 9 W. (From Pg. 44)

- 12.00 Foot of Mtn. spur (N & S) Enter valley of N. Fork.
- 20.00 Set a sycamore post 4"x4" in large mound of rock from which a 36" live oak bears S. 22° W. - 1.92 chs.

Traverse down River thru Sec. 29, T. 2 N., R. 9 W. (From Pg. 45)

From Corner to Secs. 20, 21, 28 and 29,

S. 60° W.	29.00 chs.	S. 14.50	W. 25.11
South	19.50 "	19.50	
		34.00	
S. 18° W.	43.00 chs.	40.90	13.29
		74.90	38.40
West	1.60		1.60
			40.00
South	5.10	5.10	
		80.00	

Set an alder post 3 x 3 in a large mound of rocks for 1/4 cor. bet. 29 and 32, from which a 6" alder bears S. 70° W. - 08 links and a 10" alder bears N. 59 W. - 14 links.

West bet. Secs. 29 and 32, T. 2 N., R. 9 W., from 1/4 cor.

- 8.00 Cross San Gabriel River 40 links (S)
- 15.00 Leave valley and ascend.
- 25.00 Summit of spur (N.W. & S.E.)
- 34.50 Cross gulch.
- 40.00 Set an oak post 4"x4" in a large mound of rock on side hill facing S.E. corner to Secs. 29, 30, 31 and 32.

North boundary of Rancho Azusa Duarte (Copied from Pg. 22A)

Leaving Sta. #5, my Station #5 being N 36-3/4° E. 1.77 chs. from the stake marked I run N. 79 1/2° W. 119.00 chs.

- 14.70 Cross brush fence (N & W)
- 27.00 Leave valley and ascend hill.
- 31.82 Summit of spur N.W. & S.E., thence by traverse N. 31-3/4° W - 10.00 chs., thence N. 79 1/2° W. 22.00 chs. along on mesa, thence S. 31-3/4° E. 10 chs. to a point 53.82 chs. on line on West side of numerous short gulches,

64.60 thence along mesa N. $79\frac{1}{2}^{\circ}$ W. counting all distances from Sta. #5.
 head of gulch and down same.
 75.00 Cross Canada gulch N. 37° E.
 76.00 Leave a point for stationing near an old mound.
 80.00 Cross ravine.
 85.50 Summit of spur (N & S) then over broken spurs very irregular.
 100.00 Enter valley, a house N. 2.00 chs.
 112.00 Leave valley ascend over broken hills.
 119.00 Set an alder stake in a mound of rocks on side of ridge facing
 S.E. marked A. D. No. 4, then N. $68\frac{1}{2}^{\circ}$ W.
 10.00 Cross near head of gulch S.W.
 13.00 Summit spur N.E., then descend.
 21.50 Cross ravine S.W. & N.E.
 29.92 Intersect 39 links North of corner to Fractional Secs. 19 & 24.