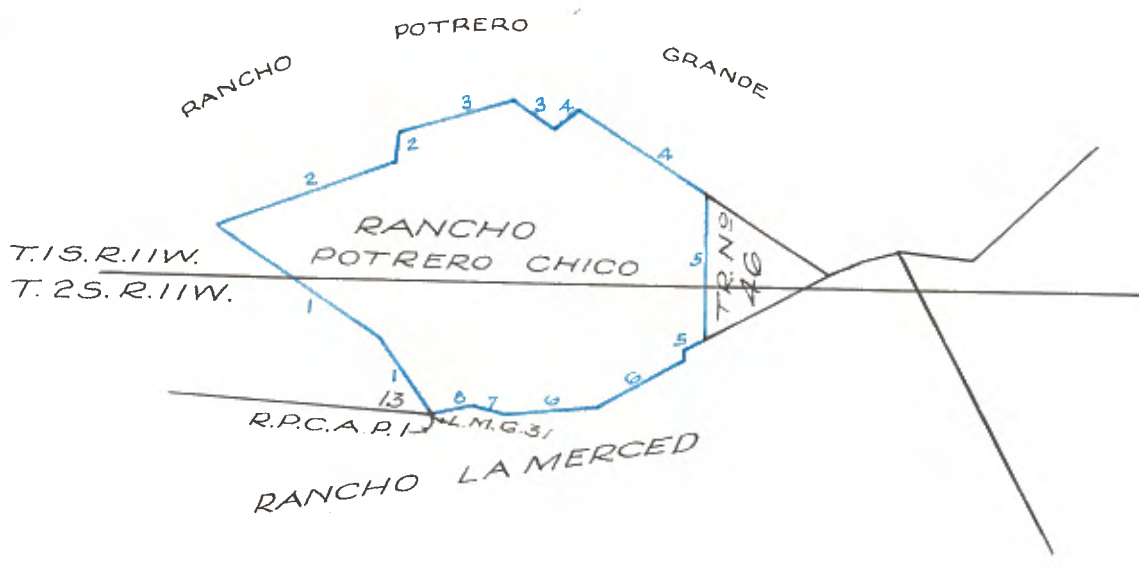


Copied from Photographic Copies
furnished by
U. S. General Land Office
Washington D. C.



SEE C.S. 9422

Survey of the bdrs. of the Rancho Potrero Chico,

Tps. 1 and 2 S., R. 11 W., S. B. M.

Chains

From the foregoing reestablishments of a portion of the bdrs. of the Rancho Potrero Grande and the Rancho La Merced, the following notes for the survey of the Rancho Potrero de la Mission Viejo de San Gabriel, now known as the Rancho Potrero Chico referred to herein as such, are compiled.

I commence at cor. No. 1 of the Rancho Potrero Chico, which is also cor. No. 31 Rancho La Merced, and cor. No. 13 Rancho Potrero Grande, which is an iron post, 2 ins., diam., 6 ins. above ground, firmly set, and marked.

RPG \ RPC
AP13 / AP1
LMG
1920

From which,
A willow 6 ins. diam., bears S. 44° 30' W., 54 lks. dist., marked LMG 31 BT.
This cor. is on the north bank of the zanja or open ditch which is one of the natural call for the bdy. of this grant.

Thence,
N. 37° 42' W., bet. Rancho Potrero Chico and Rancho Potrero Grande.

9.99 Over level cultivated land.
To cor. No. 2 of Rancho Potrero Chico, which is also cor. No. 12 Rancho Potrero Grande, and is an iron post, 2 ins. diam., 6 ins. above ground, firmly set, and marked.

RPG \
AP12 / AP2
RPC
1920

cor. in field, pits impracticable. From this cor., the NW. cor. of Elizabeth Barry's house, bears N. 64° 45' E. 5.41 chs. dist.

Thence,
N. 54° 15' W., bet. Rancho Potrero Chico and Rancho Potrero Grande.

1.78 Over level cultivated land.
2.98 Fence, partly down, bears N. 60° E., and S. 60° W.
13.98 Head of slough, skirted with willows, course W.
To W. bank of Mission Creek, 30 lks. wide, course S. 30° W., for a short distance, thence nearly S. This creek is skirted with willows.
14.73 Middle of branch, 10 lks. wide, 10 ft. banks, course S.
16.98 To cor. No. 3 Rancho Potrero Chico, which is also cor. No. 11 Rancho Potrero Grande, and is an iron post, 2 ins. diam., flush with the surface, firmly set, and marked.

Survey of the bdrs. of the Rancho Potrero Chico,
Tps. 1 and 2 S., R. 11 W., S. B. M.

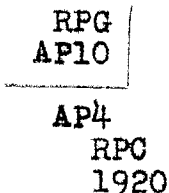
Chains



From which,
A willow 4 ins. diam., in old fence line, bears S. 54° 00' W.,
80 lks. dist., marked RPG 11 BT.
A willow 12 ins. diam., bears N. 20° 50' E., 183 lks. dist.,
marked RPG 11 BT.
An iron pipe, 2 ins. diam., 3 ins. above ground, firmly set
in old fence line, bears N. 40° 00' E., 120 lks. dist.,
probably local survey mark.

Thence,
N. 72° 25' E., bet. Rancho Potrero Chico, and Rancho Potrero
Grande.

- Over level cultivated land.
- 1.77 Middle of branch, 10 lks. wide, course S., leave cultivated
land and enter brush.
- 5.57 To E. bank of Mission Creek, 40 lks. wide, course SW.,
leave brush and enter cultivated land.
- 8.92 House, bears S. about 1.50 chs. dist.
- 13.47 House, bears N. about 1.50 chs. dist.
- 15.77 Pedro Alvitre's house, bears S. about 3.00 chs. dist.
- 17.17 Leave cultivated land, and enter english walnut orchard,
bears N. 30° W., and S. 30° E.
- 18.67 To cor. No. 4 Rancho Potrero Chico, which is also cor.
No. 10 Rancho Potrero Grande, and is an iron post, 2 ins.
diam., flush with the surface, firmly set, and marked.



From which,
The witness cor. to cor. No. 5 Rancho Potrero Chico, which
is also the witness cor. to cor. No. 9 Rancho Potrero Grande,
hereafter described, bears N. 30° 20' W., 2.18 chs. dist.

Thence,
N. 2° 38' W., bet. Rancho Potrero Chico, and Rancho Potrero
Grande.

- Over level land in English walnut orchard.
- .65 Fence, bears N. 77° 30' E. and S. 77° 30' W., leave english
walnut orchard, enter marsh and willows along Mission Creek.
- 2.85 To the true point for cor. No. 5 Rancho Potrero Chico,
which is also the true point for cor. No. 9 Rancho Potrero
Grande, falls in marsh, From the said true point,

Survey of the bdrs. of the Rancho Potrero Chico,

Tps. 1 and 2 S., R. 11 W., S. B. M.

Chains

the witness cor. to cor. No. 5 Rancho Potrero Chico, which is also the witness cor. to cor. No. 9 Rancho Potrero Grande, bears S. 45° 25' W., 1.37 chs. dist., and is an iron post, 2 ins. diam., 10 ins. above ground, firmly set, and marked.

RPG
AP9 WC

AP5 WC
RPC
1920

From which,
A willow 5 ins. diam., bears S. 53° 15' E., 38 lks. dist., marked RPC WC 5 BT.
A willow 7 ins. diam., on willow stump 3 ft. in diam., bears S. 23° 30' W., 33 lks. dist., marked RPC WC 5 BT.
This cor. is set on an abandoned dam.

Thence,
From the true point for cor. No. 5 Rancho Potrero Chico, which is also the true point for cor. No. 9 Rancho Potrero Grande, N. 74° 00' E., bet. Rancho Potrero Chico, and Rancho Potrero Grande.
Over level marshy land along Mission Creek, in willows.
The true point for cor. No. 6 Rancho Potrero Chico, which is also the true point for cor. No. 8 Rancho Potrero Grande, falls in marsh, from said true point, the witness cor. to cor. No. 6 Rancho Potrero Chico, which is also the witness cor. to cor. No. 8 Rancho Potrero Grande, bears S. 27° 25' W., 3.23 chs. dist., and is an iron post, 2 ins. diam., 10 ins. above ground, firmly set, and marked.

12.15

RPG
AP8 WC
AP6
RPC WC
1920

Pits impracticable. This cor. is at edge of marsh and brush, bears SE. and S. 70° W.

Thence,
From the true point for cor. No. 6 Rancho Potrero Chico, which is also the true point for cor. No. 8 Rancho Potrero Grande.
S. 44° 15' E., bet. Rancho Potrero Chico, and Rancho Potrero Grande.
Over level marshy land along Mission Creek, in willows.
To the true point for cor. No. 7 Rancho Potrero Chico, which is also the true point for cor. No. 7 Rancho Potrero Grande, falls in marsh. From said true point, the witness cor. to cor. No. 7 Rancho Potrero Chico, which is also the witness cor. to cor. No. 7 Rancho Potrero Grande, bears S. 45° 25' W., 1.37 chs. dist., and is an iron post, 2 ins. diam.

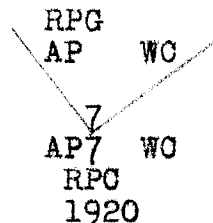
4.98

Survey of the bdrs. of the Rancho Potrero Chico,

Tps. 1 and 2 S., R. 11 W., S. B. M.

Chains

10 ins. above ground, firmly set and marked.

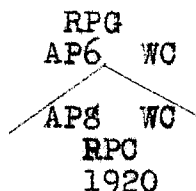


Pits impracticable. Middle of a small spring flowing N., bears E. 10 lks. dist.

Thence, from the true point for cor. No. 7 Rancho Potrero Chico, which is also the true point for cor. No. 7 Rancho Potrero Grande, N. 47° 22' E., bet. Rancho Potrero Chico, and Rancho Potrero Grande.

3.71

Over level marshy land along Mission Creek, in willows. The true point for cor. No. 8 Rancho Potrero Chico, which is also the true point for cor. No. 6 Rancho Potrero Grande, falls in marsh. From said true point, the witness cor. to cor. No. 8 Rancho Potrero Chico, which is also the witness cor. to cor. No. 6 Rancho Potrero Grande, bears S. 45° 25' W., 1.17 chs. dist., and is an iron post, 2 ins. diam., 10 ins. above ground, firmly set, and marked.



From which,
A willow 7 ins. diam., on old stump, bears N. 35° 00' W., 40 lks. dist., marked RPG WC 6 BT.
A willow 18 ins. diam., bears S. 62° 15' E., 63 lks. dist., marked RPG WC 8 BT.
This witness cor. is on an old dam, bearing NW. and SE.

Thence, from the true point for cor. No. 8 Rancho Potrero Chico, which is also the true point for cor. No. 6 Rancho Potrero Grande, S. 53° 04' E., bet. Rancho Potrero Chico, and Rancho Potrero Grande.

5.15

Over level marshy land along Mission Creek, in willows. Leave marshy land and willows along Mission Creek, and enter cultivated land, bears E. and N. 60° W.

7.45

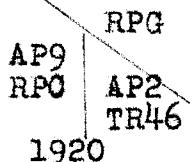
Middle of abandoned irrigation ditch, 10 lks. wide, course S. 10° W.

10.28

To cor. No. 9 Rancho Potrero Chico, which is also on the bdy. of Rancho Potrero Grande, and cor. No. 2 Tract 46, and is an iron post, 2 ins. diam., flush with the surface, and marked.

Survey of the bdrs. of the Rancho Potrero Chico,
 TPS. 1 and 2 S., R. 11 W., S. B. M.

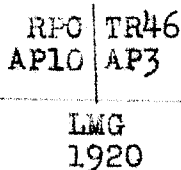
Chains



From which,
 A double 'bois'd' arc', east prong, 16 ins. diam., bears
 S. 75° 10' W., 449 lks. dist., marked RPC 9 BT.
 cor. in cultivated land, pits impracticable.
 Timoteo Repetto' house, bears S. 75° 45' W. Another house,
 bears S. 74° 50' W. For further ties see cor. No. 1 Tract
 46.

13.45
 18.10

Thence,
 South, bet. Rancho Potrero Chico and Tract 46.
 Over level cultivated land.
 Fence, now down, bears N. 10° W. and S. 10° W. and S. 10° E.
 To cor. No. 10 Rancho Potrero Chico, which is also cor.
 No. 3 Tract 46, and an angle point in the bdy. of Rancho
 La Merced, and is an iron post, 2 ins. diam, 10 ins. above
 ground, firmly set, and marked.



Pits impracticable.

6.90

Thence,
 S. 62° 30' W., bet. Rancho Potrero Chico, and Rancho La
 Merced.
 Over level cultivated land, along N. bank of the zanja.
 To cor. No. 11 Rancho Potrero Chico, which is also an
 angle point in the bdy. of Rancho La Merced, and is an
 iron post, 2 ins. diam., 10 ins. above the ground, firmly
 set, and marked.



Pits Impracticable.

Survey of the bdrs. of the Rancho Potrero Chico,

TPS. 1 and 2 S., R. 11 W., S. B. M.

Chains

Thence,
S. $88^{\circ} 30'$ W., bet. Rancho Potrero Chico, and Rancho La Merced.
Over level cultivated land, along N. bank of the zanja.
3.80 To cor. No. 12 Rancho Potrero Chico, which is also an angle
point in the bdy. of Rancho La Merced, and is an iron post,
2 ins. diam., 6 ins. above ground, firmly set, and marked.

RPC
AP12

LMG
1920

Pits impracticable. This cor. is set south and alongside
an iron pipe, 2 ins. diam., flush with the surface, and at
S. end of fence, which extends N. $21^{\circ} 00'$ W.

Thence,
S. $78^{\circ} 30'$ W., bet. Rancho Potrero Chico, and Rancho La
Merced.

1.40

Over level cultivated land, along N. bank of the zanja.
To cor. No. 13 Rancho Potrero Chico, which is also an
angle point in the bdy. of Rancho La Merced, and is an
iron post, 2 ins. diam., 10 ins. above ground, firmly set,
and marked.

RPC
AP13

LMG
1920

Pits impracticable. From this cor. a double cottonwood
28 ins. diam., S. prong marked on S. face WT 33 about 4 ft.
above ground, bears N. $82^{\circ} 45'$ W., 5.61 chs. dist.
The blaze indicates an age of about 10 years.

Thence,
N. $84^{\circ} 00'$ W., bet. Rancho Potrero Chico, and Rancho
La Merced.

7.40

Over level cultivated land, along N. bank of the zanja.
To cor. No. 14 Rancho Potrero Chico, which is also an angle
point in the bdy. of Rancho La Merced, and is an iron post,
2 ins. diam., 10 ins. above ground, firmly set, and marked.

RPC
AP14

LMG
1920

Pits impracticable. From this cor., the house of Julia
de Cruz, bears N. about 2.00 chs. dist.

Thence

Survey of the bdrs. of the Rancho Potrero Chico,

Tps. 1 and 2 S., R. 11 W., S. B. M.

Chains.

Thence,
S. 63° 00' W., bet. Rancho Potrero Chico, and Rancho La
Merced.

1.20

Over level cultivated land, along N. bank of the zanja.
To cor. No. 15 Rancho Potrero Chico, which is also an angle
point in the bdy. of Rancho La Merced, and is an iron post,
2 ins. diam., 10 ins. above ground, firmly set, and marked.

RPC
AP15

LMG
1920

Pits impracticable.

Rhence,
N. 77° 00' W., bet. Rancho Potrero Chico, and Rancho La
Merced.

1.60

Over level cultivated land, along N. bank of the zanja.
To cor. No. 16 Rancho Potrero Chico, which is also an
angle point in the bdy. of Rancho La Merced, and is an
iron post, 2 ins. diam., 10 ins. above ground, firmly set,
and marked.

RPC
AP16

LMG
1920

Pits Impracticable.

Thence,
S. 76° 00' W., bet. Rancho Potrero Chico, and Rancho La
merced.

.90
1.20

Over level cultivated land, along N. bank of the zanja.
A short division fence, bears NW. from zanja.
To cor. No. 17 Rancho Potrero Chico, which is also an angle
point in the bdy. of Rancho La Merced, and is an iron post,
2 ins. diam., 10 ins. above ground, firmly set, and
marked.

RPC
AP17

LMG
1920

Pits impracticable.

Survey of the bdrs. of the Rancho Potrero Chico,

Tps. 1 and 2 S., R. 11 W., S. B. M.

Chains.

Thence,
S. 51° 33' W., bet. Rancho Potrero Chico, and Rancho La
Merced.
Over level cultivated land, along N. bank of the zanja.
To cor. No. 1 Rancho Potrero Chico, and place of beginning.
Land, level.
Soil, dark heavy loam; 1st rate.
Timber, willow along Mission Creek, and a few willow along
the zanja.

1.82

Containing an area of 83.46 A.

Boundaries of the Rancho Potrero Chico. Latitudes, departures,
and closing errors.

Line desig.	True bearing	Dist- ance	Latitudes		Departures	
			N	S	E	W
		chs	chs	chs	chs	chs
1 to 2	N. 37° 42' W.	9.99	7.90			6.11
2 to 3	N. 54° 18' W.	16.98	9.91			13.79
3 to 4	N. 72° 25' E.	18.67	5.64		17.80	
4 to 5	N. 2° 38' W.	2.85	2.84			.13
5 to 6	N. 74° 00' E.	12.15	3.35		11.68	
6 to 7	S. 44° 15' E.	4.98		3.57	3.48	
7 to 8	N. 47° 22' E.	3.71	2.51		2.73	
8 to 9	S. 53° 04' E.	10.28		6.18	8.22	
9 to 10	South	18.10		18.10		
10 to 11	S. 62° 30' W.	6.90		3.19		6.12
11 to 12	S. 88° 30' W.	3.80		.10		3.80
12 to 13	S. 78° 00' W.	1.40		.28		1.37
13 to 14	N. 84° 00' W.	7.40	.77			7.36
14 to 15	S. 63° 00' W.	1.20		.55		1.07
15 to 16	N. 77° 00' W.	1.60	.36			1.56
16 to 17	S. 76° 00' W.	1.20		.29		1.16
17 to 1	S. 51° 33' W.	1.82		1.13		1.43
Totals			33.28	33.39	43.91	43.90
				33.28	43.90	
Error in lat.			.11			
Error in dep.			.01			

Survey of the bdrs. of the Rancho Potrero Chico,

Tps. 1 and 2 S., R. 11 W., S. B. M.

GENERAL DESCRIPTION.

The land within the bdrs. of the Rancho Potrero Chico is level, and all under intense cultivation. The prevailing crops are small grain and vegetables for the Los Angeles markets. There is an english walnut orchard in the northern portion of this area on the lands of Pedro Alvitre, and adjacent to the south on the lands of Timoteo Repetto is a small family orchard of apples, peaches, and apricots.

The drainage is rather sluggish, the water level being only about 4 feet below the surface, however is being gradually tiled and drained to the westward to Mission Creek.

There are numerous oil wells from the west bdy., westerly and southwesterly for a distance of about 2 miles, but there are none on this tract at present.

P 27