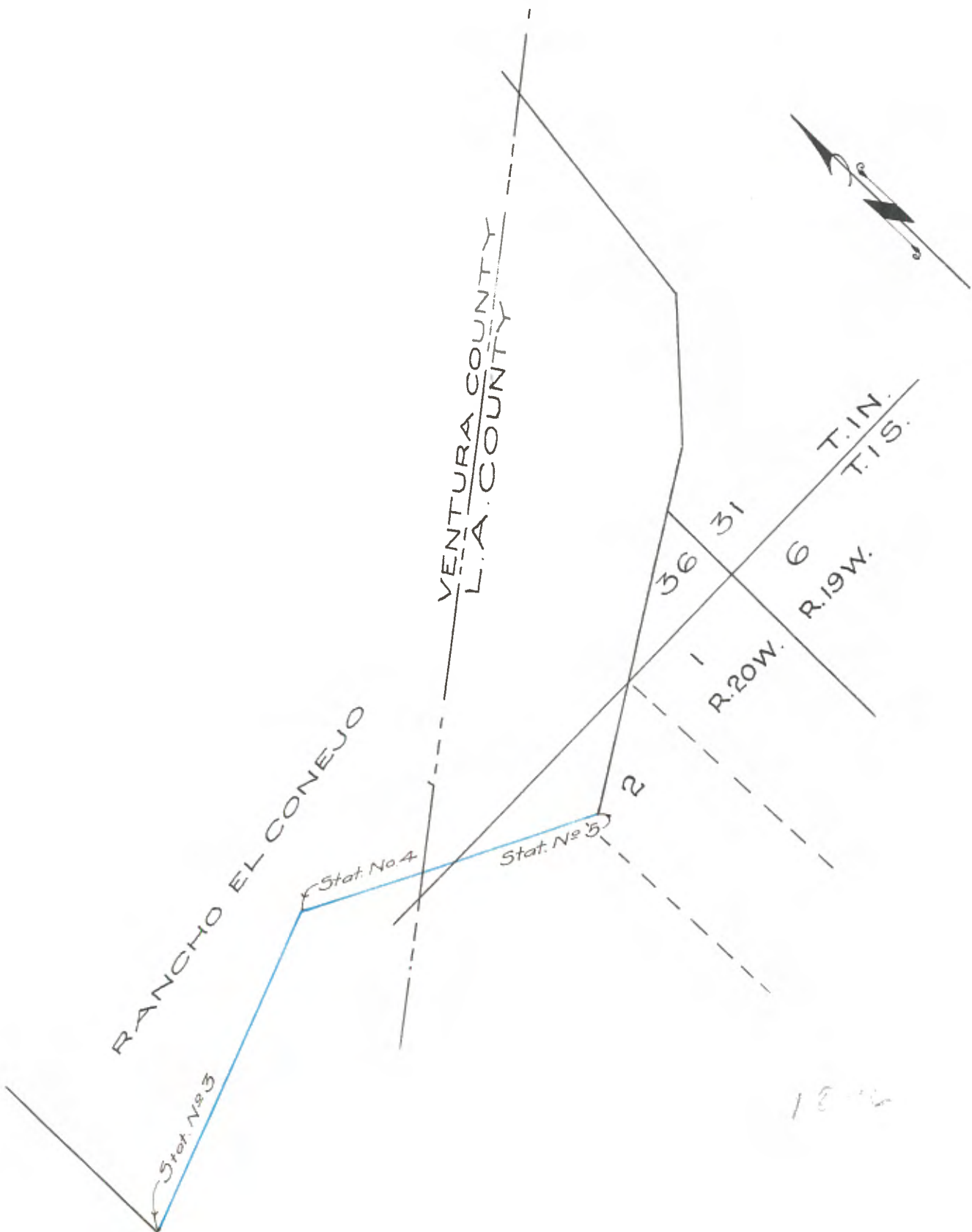


Copied from Photographic Copies
furnished by
U.S. General Land Office
Washington D.C.



BOUNDARY LINE OF RO. EL CONEJO THROUGH

T. 1 N., R. 20. W. S. B. M.

Chains.

November 30th, 1896, at 8h. Om, 1. m. t., I set off 34° 08' N. on the lat. arc; 21° 45' S., on the decl. arc; and determine a true meridian with my solar.

From cor. No. 4, on boundary line of Ro. EL Conejo, where I found a portion of a stone mound, on top of high rocky peak, but no other place of cor., and to re-mark which, I set a sandstone, 18 x 14 x 10 ins., 12 ins. in the ground, marked Ro. E. C. on N. and cor., 4 on E. faces, and rebuilt stone mound, 6 feet base, 4-1/2 feet high, S. E. of cor.

Pits impracticable, from which bears the Coast Survey Station S. 12-3/4° W., about 60.00 chs. dist., I run S. 73°05' E. on a random line along boundary.

See P. 1.
of Suppl.
Notes.

The discrepancy in the course of this line is so great that I retrace same, twice, and on this random run on the angle, which I found would run the true line, when I previously retraced it.

I set temporary corners at every 40 chs., and at 387.50 chs. arrive at cor. No. 5 on said boundary, previously described; thence I run, N. 73° 05' W. on a true line along boundary.

30.50

Descend through dense Chaparral.

Gulch 20 lks. wide, 100 feet below cor., No. 5, course N. Ascend.

RE-SURVEY BOUNDARY LINE OF RO. EL CONEJO, THROUGH

T. 1. S., R. 19, W., S. B. M.

Chains

40.00

Set a sandstone 16 x 10 x 8 ins. 11 ins. in the ground for 1/2 mile cor. on line, marked Ro. E. C. on N. and 1/2 M. on E. faces and raised a stone mound 3-1/2 feet base, 2 feet high, S. E. of cor.

Pits impracticable.

46.60

Top of rocky spur 75 feet above gulch, bears N. and S.

Descend.

80.00

Set a sandstone 24 x 12 x 12 ins., 18 ins. in the ground for 1 mile cor. on line, marked

Ro. E. C. on N. and

1 M. on E. faces and raised a stone mound 3 feet base, 2 feet high, S. E. of cor.

Pits impracticable.

83.50

Gulch 20 lks. wide, 60 feet below last cor., course S. 20° W., Ascend.

91.00

Top of spur, 100 feet above gulch, bears N. E. and S. W.

Descend.

95.40

Gulch 10 lks. wide, 50 feet below top of spur, course S.

Ascend.

99.50

Top of ridge 75 feet above gulch, bears N. E. and S. W.

Descend.

RE-SURVEY BOUNDARY LINE OF RO. EL CONEJO, THROUGH

T. 1, S., R. 19, W., S. B. M.

Chains

- 120.00 Set a sandstone 16 x 14 x 5 ins. 11 ins. in the ground, for 1-1/2 mile cor. on line, marked
Ro. E. C. on N. and
1-1/2 M. on E. faces and raised a stone mound 3-1/2 feet base, 2 feet high, S. E. of cor.
Pits impracticable.
Cor. set 200 feet below top of last ridge.
- 124.82 Canon, 100 lks. wide, 100 feet below cor., course N. 45° W. Ascend.

RE-SURVEY BOUNDARY LINE OF RO. EL CONEJO, THROUGH,

T. 1 N., R. 19 W., S. B. M.

- 144.00 Top of ridge, 100 feet above canon, bears N. and S. Descend.
- 154.75 Bed of canon, 25 lks. wide, 100 feet below top of ridge, course N. E. Ascend.
- 160.00 Set a sandstone 24 x 12 x 10 ins., 18 ins. in the ground, for 2 mile cor. on line, marked
Ro. E. C. on N. and
2 M. on E. faces, and raised a stone mound 3-1/2 feet base, 2 feet high, S. E. of cor.
Pits impracticable.
- 166.39 To edge of perpendicular cliff, bears N. and S., impossible to chain. Set a sandstone 17 x 12 x 8 ins., 10 ins. in the ground for witness point, marked W. P. on E. face and raised a mound of stone, 3 feet base, 2 feet high, S. E. of cor.
Pits impracticable.
To avoid cliff, I offset N. 3.00 chs., thence N. 73° 05' W. on off set line, to
- 169.39 Thence south 3.00 chs. to true line and set a sandstone 24 x 19 x 12 ins., 18 ins. in the ground, for witness point, marked W. P. on E. face and raised a mound of stone 2-1/2 feet high, 3 feet base, S. E. of cor.
Pits impracticable.
- 200.00 Thence N. 73° 05' W. on a true line.
Set a sandstone 16 x 16 x 9 ins. 11 ins. in the ground, for 2-1/2 mile cor. on line, marked
Ro. E. C. on N. and
2-1/2 M. on E. faces, and raised a stone mound, 3 feet base, 2 feet high, S. E. of cor.
Pits impracticable.
- 240.00 Set a sandstone 20 x 18 x 6 ins. 15 ins. in the ground for 3 mile cor., on line marked
Ro. E. C. on N. and
3 M. on E. faces and raised a stone mound, 3 feet base, 2 feet high, S. E. of cor.
Pits impracticable.
- 244.00 Top of ridge, 400 feet above canon, bears N. 15° E. and S. 15° W. Descend.

RE-SURVEY BOUNDARY LINE OF RO. EL CONEJO, THROUGH,

T. 1 N., R. 19 W., S. B. M.

Chains

- 258.00 Gulch 10 lks. wide, 150 feet below top of ridge, course N.
Ascend.
- 276.00 Top of ridge 100 feet above gulch, bears N. and S.
Descend.
- 280.00 Set a sandstone 14 x 12 x 8 ins. 9 ins. in the ground, for
3-1/2 mile cor. on line, marked
Ro. E. C. on N. and
3-1/2 M. on E. faces and raised a mound of
stone 3-1/2 feet base, 2 feet high, S. E.
of cor.
- 303.50 Pits impracticable.
Canon 25 lks. wide, with stream of water, 3 lks. wide,
250 feet below, 3-1/2 mile cor., course N. 45°, E.
Ascend.
- 320.00 Set a sandstone 24 x 12 x 6 ins., 18 ins. in the ground,
for 4 mile cor. on line, marked,
Ro. E. C. on N. and
4 M. on E. faces and raised a stone mound
3-1/2 feet base, 2 feet high, S. E. of cor.
Pits impracticable.
Cor. set 200 feet above canon.
- 360.00 A Sandstone boulder in place, which I marked with + at
exact cor. point, 2-1/2 x 2 x 1-1/2 feet above the ground,
also marked,
Ro. E. C. on N. and 4-1/2 M. on E. faces,
for 4-1/2 mile cor. on line and raised a
stone mound, 4 feet base, 2-1/2 feet high,
S. E. of cor.
- 370.50 Pits impracticable.
Top of rocky spur, 100 feet above last cor., bears N.
and S.
Descend.
- 376.50 Gulch, 15 lks. wide, 75 feet below top of spur, course S.
45° W.,
Ascend.
- 387.50 To cor. No. 4 on boundary line.
Land, mountainous.
Soil, 3rd rate.
Scattering Oak Timber.
Dense undergrowth of Chaparral.
Mountainous land, 387.50 chs.

November 30th, 1896.

RE-SURVEY BOUNDARY LINE OF RO. EL CONEJO, THROUGH

T. 1 N., R. 19 W., S. B. M.

Chains.

December 1st, AT 8 a. m., I set off $34^{\circ} 07'$ on the lat. arc; $21^{\circ} 55'$ S. on the decl. arc; and determine a true meridian, with the solar, at cor. No. 3 on boundary of Ro. El Conejo, also cor. No. 5 on boundary of Ro. Guadaluasca.

From cor. No. 3 on boundary of Ro. Conejo, also Cor. No. 5 on boundary of Ro. Guadaluasca, which is a sandstone, set firmly in the ground, the marks partly obliterated and the stone mound, in poor order, situated on high rocky peak, as described in field notes of Rancho. I remark stone G. 5 on W., E. C. 3, on N. and

Re-SURVEY BOUNDARY LINE OF RO. EL CONEJO, THROUGH

T. 1 N., R. 20, W., S. B. M.

Also rebuilt stone mound 4 feet base, 2-1/2 feet high, E. of cor.

Pits impracticable.

I run

N. $62^{\circ} 52'$ E. on a random line along boundary.

See P. 1.
of Suppl.
Notes.

The discrepancy in the course of this line is so great that I retrace same twice and on this random, run on the angle which I found would run the true line, where I previously retraced it.

I set temporary corners at every 40.00 chs. and at 251.61 chs. arrive at cor. No. 4, on said boundary, which is a sandstone 14 x 10 x 6 ins. above the ground, marked and witnessed as described by the Surveyor General, previously reset by me; thence I run

S. $62^{\circ} 52'$ W. on a true line along boundary.

Descend through dense Chaparral.

11.50

Gulch 15 lks. wide, 50 feet below cor. No. 4, course S. 45° E. Ascend.

26.50

N. slope of rocky ridge, bears N. W. and S. E. and continues ascent.

30.00

Top of ridge, 200 feet above gulch, bears N. W. and S. E. Descend.

40.00

Set a sandstone 18 x 10 x 8 ins. 12 ins. in the ground for 1/2 mile cor. on line, marked

Ro. E. C. on N. and

1/2 M. on E. face and raised a mound of stone 2 feet base, 1-1/2 feet high, W. of cor.

61.40

Pits impracticable.

Canon, 20 lks. wide, 150 feet below top of ridge, course S. 15° E. Ascend.

78.50

Top of spur, 75 feet above canon, bears N. W. and S. E. Descend.

80.00

Set a sandstone 20 x 10 x 8 ins. 15 ins. in the ground, for 1 mile cor. on line, marked

Ro. E. C. on N. and

1, M. on E. faces and raised a stone mound 2 feet base, 1-1/2 feet high, W. of cor.

Pits impracticable.

RE-SURVEY BOUNDARY LINE OF RO. EL CONEJO, THROUGH

T. 1 N., R. 20 W., S. B. M.

Chains

90.14 Canon 10 lks. wide, 75 feet below top of ridge, course S. 45° E.
Ascend.

105.00 Top of rocky spur, 250 feet above canon, bears S. 65° W. and N. 65° E. and along same.

110.00 Leave top of spur, bears N. 17° W. and S. 17° E.
Descend.

120.00 Low sag, 200 feet below top of spur, bears N. and S. and set a sandstone 35 x 10 x 6 ins. 26 ins. in the ground for 1/2 mile cor. on line, marked,
Ro. E. C. on N., and
1-1/2 M. on E. faces and raised a stone mound, covered with earth, 3-1/2 feet base, 2-1/2 feet high, W. of cor.
Ascend.

129.50 Top of rocky spur 75 feet above cor., bears N. W. and S. E.
Descend.

160.00 Set a sandstone 14 x 12 x 8 ins., 9 ins. in the ground, for 2 mile cor. on line, marked,
Ro. E. C. on N., and
2, M. on E. faces and raised a stone mound, 2 feet 1-1/2 feet high, W. of Cor.

170.09 Pits impracticable.
Gulch 12 lks. wide, 25 feet below 2 mile cor., course N. 80° W.
Ascend.

193.00 Top of ridge 150 feet above gulch, bears N. 80° W. and S. 80° E.
Descend.

20.00 Set a sandstone 24 x 24 x 10 ins., 18 ins. in the ground, for 2-1/2 mile cor. on line, marked,
Ro. E. C. on N. and
2-1/2 M. on E. faces and raised a stone mound, 2 feet base, 1-1/2 feet high, W. of cor.

204.54 Pits impracticable.
Gulch 9 lks. wide, 100 feet below top of ridge, course N. 45° W.
Ascend.

240.00 A sandstone in place 8 x 4 x 4 feet above the ground, which I marked,
Ro. E. C. on N., and
3, M. on E. faces, for 3 mile cor. on line and raised a stone mound, 4 feet base, 2 feet high, W. of cor.

251.61 Pits impracticable.
To cor. No. 3, on boundary line of Ro. El Conejo, also cor. No. 5, on boundary line of Ro. Guadaluasca.
Land, mountainous.
Soil, 3rd rate.
Scattering Oak Timber.
Dense undergrowth of Chaparral.
Mountainous land, 251.61 chs.

December 1st, 1896.