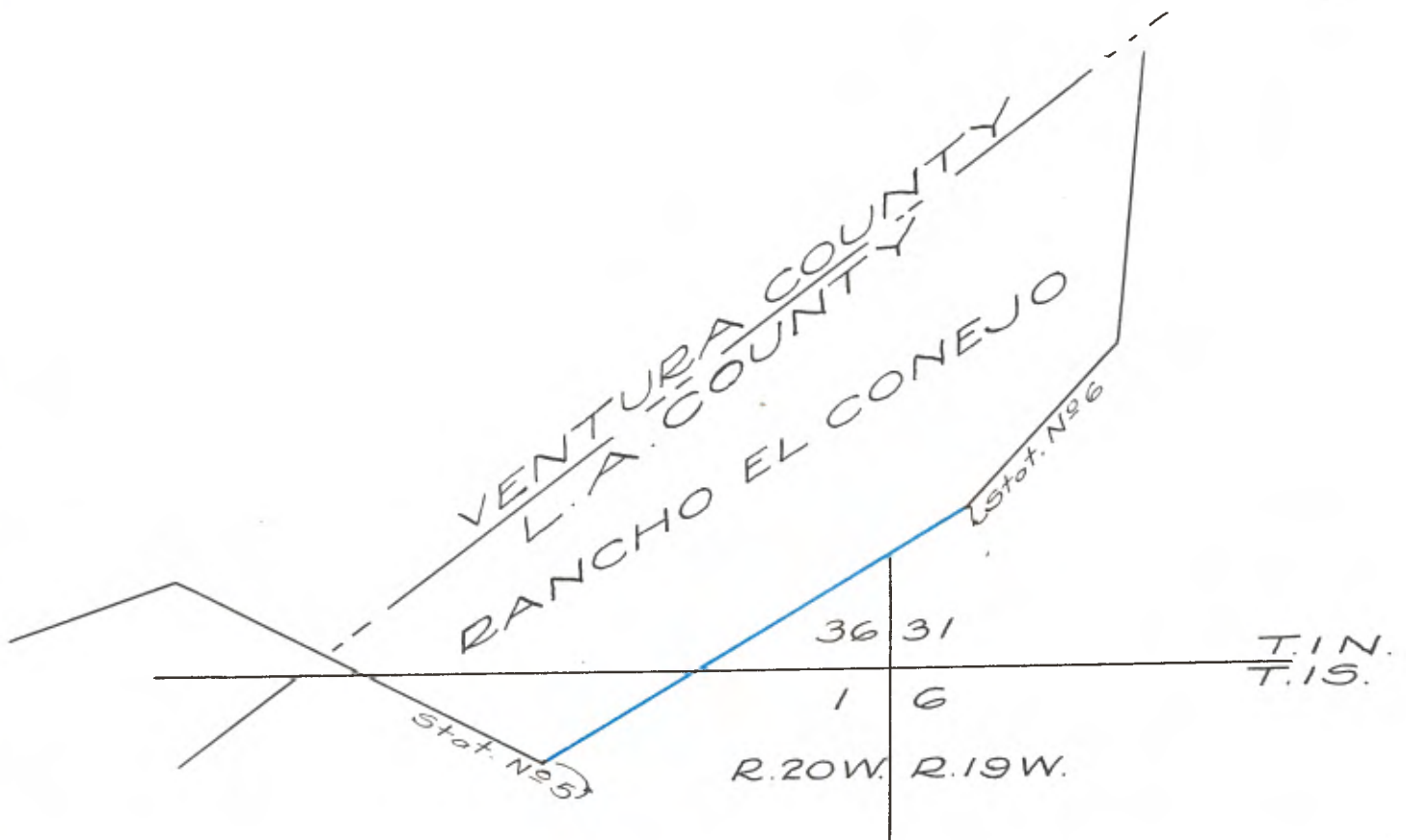


Copied from Photographic Copies
furnished by
U.S. General Land Office
Washington D.C.



RE-SURVEY OF RANCHO EL CONEJO IN TWPS 1, N. and
TWP. 1, S., R. 19, W., S. B. M.

Chains.

Oct. 1st, 1896. At 7h, 30m, a. m., 1. m. t., I set off 34° 07' N. on the lat. arc; 3° 31' S., on the decl. arc; and determine a true meridian with the solar compass at cor. No. 5, on Rancho El Conejo, longitude 118° 54' West.

From cor. C. No. 5, where I find remains of old stone mound on top of high peak.
Russell's house, bears N. 21° E. the Adobe House cannot be seen from here, but bears about N. 28° E. and at this point, set a sandstone 22x15x9 ins., 16 ins. in the ground, and rebuilt old stone mound, 2 feet base, 1-1/2 feet high, around stone. Pits impracticable.
There is so much variance in the course and length of this line, that I ran it twice, the first time I found the true bearing of the line and therefore run N. 55° 57' E. on a random line, and at I arrive at Oak tree, 30 ins. diam. with marks, partially destroyed "C. 6" and "L" plainly visible, I remark C. No. 6 and L. V. No. 1, The Oak tree stands on south side of Triunfo canon, Thence S. 55° 57' on a true line, ascend in dense Chaparral.
Top of spur trends north 50 feet above cor. and descend.
Cross gulch 6 lks. wide, course north 40 feet below spur and ascend.
Top of spur, trends north, 50 feet above gulch and descend.
Cross gulch 12 lks. wide, course north 50 feet below spur and ascend.
Set a sandstone 28 x 14 x 9 ins., 21 ins. in the ground

217.00
15.00
21.05
24.50
30.95
40.00

1/2 M.O.
marked ~~6-1-0-~~ on side facing ranch and raised a mound
40

of stone, 2 feet base, 1-1/2 feet high, in ranch at right angle to line. Pits Impracticable.
On top of spur trends north 75 feet above gulch and descend.
Cross canon, 25 lks. wide, course N. 10° E. 150 feet below and ascend.
Top of ridge, bears N. W. and S. E. 250 feet above canon and descend.
Cross gulch, 10 lks. wide, course west 130 feet below ridge and ascend.
Set a sandstone 24 x 10 x 10 ins., 18 ins. in the ground,

46.25
73.00
77.00
80.00

1. M. C.
marked ~~6-2-e-~~ on side facing ranch and raised a mound
60

of stone, 2 feet base, 1-1/2 feet high in ranch at right angle to line. Pits impracticable on top of spur trends East 80 feet above gulch. Descend.

See P. 5. of Suppl. Notes.
See P. 5. of Suppl. Notes.

RE-SURVEY OF RANCHO EL CONEJO IN TWPS. 1, N. and
1, S., R. 19, W., S. B. M.

Chains.

98.10 Cross gulch, 15 lks. wide, course N. W. 175 feet below spur and ascend.

112.50 Top of ridge, bears S. 50° E. and N. 50° W. and descend (200 feet above gulch).

116.00 Cross low sag and ascend.

120.00 Set a sandstone 12 x 12 x 10 ins. 8 ins. in the ground

1/2 M. C.

See P. 5 of Suppl. Notes marked ~~9-3-e~~ on side facing ranch and raised a mound
-120-

of stone, 2 feet base, 1-1/2 feet high in ranch at right angle to line. Pits impracticable.

124.00 Divide between Canada Las Triunfo and Canada Lobo bears N. 50° W. and S. 50° E. 100 feet above sag and descend.

135.25 Cross gulch 10 lks. wide, course S. E. 125 feet below divide and ascend.

140.00 A stone mound, bears S. 72-1/2° E. 10 lks. dist., with stake marked P. B.

140.50 Top of spur, trends S. 40° E. 120 feet above gulch and descend.

151.10 Cross Canada Lobo, 25 lks. wide, course east, 250 feet below spur and descend.

160.00 Marked a sandstone in place 6 x 6 x 3 feet above ground, I cut a cross (x) at the exact cor. point, marked

2 M. C.

See P. 5 of Suppl. Notes marked ~~6-4-e~~ on side facing ranch and raised a mound of
-160-

stone, 2 feet base, 1-1/2 feet high, in ranch, at right angle to line.

Pits impracticable, about 50 feet above canon.

169.50 Top of ridge, bears N. and S. 175 feet above canon and descend.

183.50 Cross gulch, 8 lks. wide, course N. 60° W. 50 feet below ridge and ascend.

1/2 M. C.

200.00 Marked a sandstone 6 x 5 x 4 feet in place ~~6-5-e~~ on
200

See P. 5 of Suppl. Notes. side facing ranch and raised a mound of stone, 2 feet base, 1-1/2 feet high, in ranch at right angle to line.

Pits impracticable.

217.00 To cor. C. No. 5.
Land, broken and mountainous. Soil 3rd rate.
Timber, Oak and Sycamore. Dense undergrowth, Chaparral.

Oct. 1st. 1896.