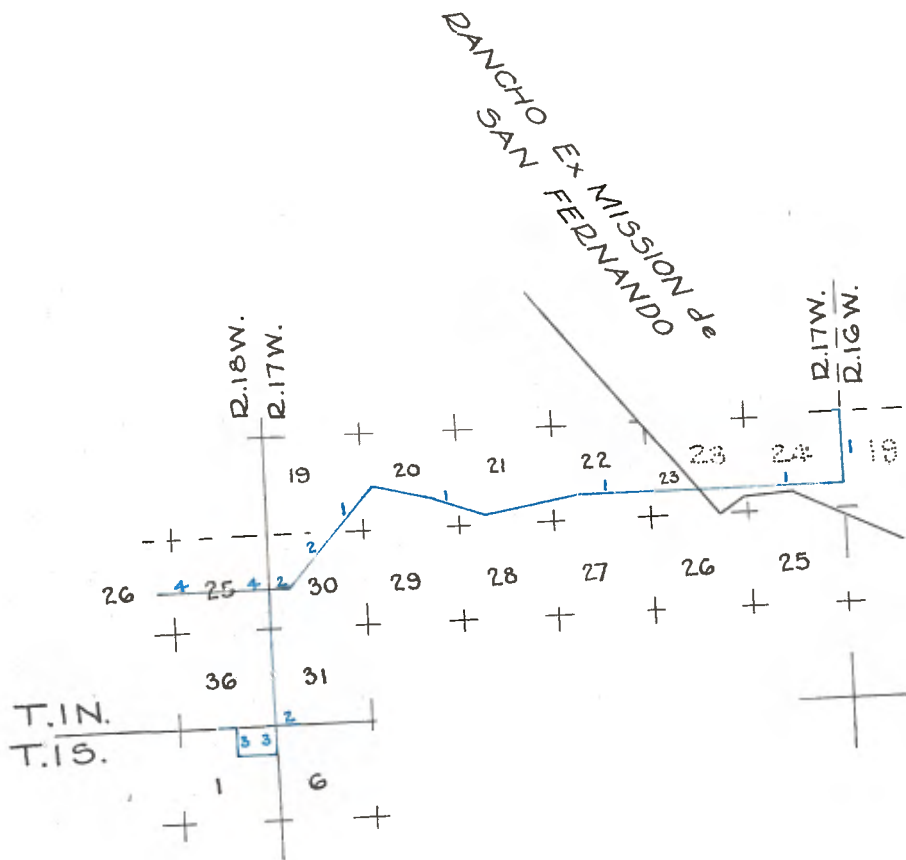


Copied from Photographic Copies
furnished by
U.S. General Land Office
Washington, D. C.



Note, - it appears from the Government Township Plates
that the blue lines were run by Henry Washington - 1853

LINES NORTH
of
SAN BERNARDINO BASE LINE, THROUGH TOWNSHIP 1 NORTH,
RANGE 17 WEST.

- South On Range line between R's. 16 & 17 W. and Secs. 19 & 24, in level open prairie.
- 40.00 Charred alder stake and oak $\frac{1}{4}$ Sec. Post in a mound of earth, from which the centers of 4 pits bears N.10 lks., S.10 lks., E.10 lks., W.10 lks.
- 48.00 From level ravine, being some scattering growth of elder to wavy prairie.
Scattering Elder and Black Walnut.
- 58.00 Set post from which bears Black Walnut N.8° E. 64 lks., 10 ins. dia; Elder, N.31 W. 59 " 6 "
- 61.27 To abrupt mountain range, at, which established Walnut post on the top of a hill about 200 feet above the valley to the N. to Secs. 19 & 24, T. 1 N., R's.16 & 17 W. from which bears--See notes at 58 chs.on this Mile.
Last chs.lks
61.27 mostly 2nd prairie--level and wavy.
It being found impracticable to continue further towards the San Bernardino Base Line, returned to the stake set at 58 chs.on Range Line between 16 & 17, being 2 miles, 22 chs. North of the San Bernardino Base Line and ran with the Variation of the Needle 13° 43' E. in--this T.1 N. R. 17 W.
1.00 mile through T.1 N. R.17 W.
Passed 20 lks.N. of Oak which = 3 feet dia.to small prairie valley.
Cross gully, dry, 20 lks.wide, course North
Cross valley to hills.
Cross high hills to rich prairie Valley
Set 1 st mile stake
2nd mile through T.1 N., R.17 W.
Crossed dry ravine 20 lks.wide, course N.20 E.
Set 2nd mile stake
3rd mile through T.1 N., R.17 W.
To dry ravine 10 lks.wide, S.of a large post Oak 26 in.dia, Course of Ravine N.
From Valley nearly N.& S. to high hills
From hills to wavy open prairie
Crossed road leading from Los Angeles to Santa Barbara, co. S.85°W.
Set stake W.of and very near the road, last crossed--
Thence ran
S.79°W through a narrow valley, prairie.
54.00 Cross road leaving from Los Angeles to Santa Barbara, course N.70°W.
30.00 Set stake--thence along a narrow way between high hills. N.66° W.
N.66° W.
11.00 Crossed road leaving from Los Angeles to Santa Barbara, Course S.50° W.
45.00 Stake:
NOTE: There is a fine sulphur spring near the last road crossed, and believed to be about 20 chs. S.of this stake, S. of the road, thence,
W.76°W Through open wavy rich prairie.
10th Jan, 1852.
- 49.00 Stake. Thence,
S.40°W
6.50 To narrow open prairie valley
16.50 Crossed dry ravine runs above and about 40 chs. up it -- a sulphur spring discharges itself in this ravine.
20 lks.wide, course West.

71

LINES NORTH
of
SAN BERNARDINO BASE LINE, THROUGH TOWNSHIP 1
NORTH, RANGE 17 WEST.

- 30.00 Crossed road leading from Los Angeles to Santa Barbara, course S. 50° W.
- 40.00 Cross same road.
- 59.00 Cross same road, course S. 50° W.
- 65.15 To dry Ravine, rocky and sandy
- 66.00 Crossed Ravine, course South.
- 80.00 From valley to Prairie Hills 2nd mile
- 10.00 To rolling rich prairie
- 30.00 Stake - Thence, I run West, through wavy open prairie.
- West
- 11.50 To level prairie
- 16.11 Set charred oak stake and charred oak post in a mound of earth to Secs. 25, T. 1 N., R. 18 W., Sec. 30, T. 1 N., R. 17 W., from which, the centers of 4 pits bears N. 10 lks. S. 10 lks. E. 10 lks. W. 10 lks, being 112 chs. - 63 lks. = 1 mile - 32 chs. - 63 lks. - N. of the San Bernardino Base line.
- From the last post I ran on the Range Line S. between R's. 17 & 18 with
- South Variation of the Needle 13° 30' East
- 8.00 From level prairie to steep hills, course S. E.
- 31.50 To small prairie valley.
- 32.63 Set charred stake and oak post in a mound of earth, corner to Secs. 25 & 36, T. 1 N., R. 18 W., Secs. 30 & 31, T. 1 N. R. 17 W. from which the centers of 4 pits bears NE 11 lks, SE 11 lks, SW 11 lks.
- Post Oak S 18° E - 107 lks - T. 1 N., R. 17 W., S. 31, in. 21 dia.
- No other bearing tree convenient.
- Last 32.63 chs. (ran, measured and marked) is mostly hilly prairie partly bushy, 2nd rate upland, continued S. on Range line on Range line between R's. 17 & 18, S's. 31 & 36
- South
- .20 From valley to hills
- 40.00 Set $\frac{1}{4}$ Sec. post from which bears
- Post Oak N. 12 E., 189 lks, 17 in. dia.
- " " S. 66 W., 283 lks, 24 in dia.
- 43.50 To valley
- 48.00 Cross gully, 30 lks. wide, course S. E.
- 61.50 Cross valley to hilly prairie from which Mexican Rancho bears East 6 chs.
- 72.00 Another Mexican Rancho bears East 15 chs, - name not known.
- 80.00 To San Bernardino Base Line, set post corner to Sec. 31, T. 1 N., R. 17 W., S. 36, T. 1 N., R. 18 W., S. 6., T. 1 S. R. 17 W., S. 1., T. 1 S. R. 18 W. - from which bears,
- Post Oak N. 2° E., 163 lks. 14 in. dia. T. 1 N., R. 17 W., S. 31.
- " " S. 65 $\frac{1}{2}$ ° E., 313 lks. 20 in. dia. T. 1 S., R. 17 W., S. 6.
- " " S. 64° W., 182 lks. 22 in. dia. T. 1 S., R. 18 W., S. 1.
- Last mile open prairie, chiefly hilly and wavy, chiefly hilly. 2nd rate upland, partly level, thence,
- with Variation of Needle 13° 30' E. Var. East
- East 1st mile, on S. boundary of T. 1 N., R. 17 W.
- 2.00 To prairie valley -
- 9.05 Crossed Sulphur Branch, 4 lks wide, S. W.
- 9.60 Crossed deep gully, 170 lks. wide, course S. W.
- Banks upward of 8 feet high.
- 18.00 Crossed valley bearing S. 14 W. for about 1 mile to steep hills and cuts. hills.
- 20.00 Set Oak post on side of high hill, from which bears,

LINES NORTH
of
SAN BERNARDINO BASE LINE, E. BOUNDARY OF
TOWNSHIP 1 NORTH, RANGE 18 WEST-----.

Post Oak N. 73 W. 200 lks. 5 in. dia. T. 1 N., R. 17 W., S. 31
Evergreen red oak S. 46 1/2 W. 204 lks, 51 in. dia. Township 1 South,
Range 17 West, S. 6,
could proceed no further on this line,
the high hills being too rough to run the
San Bernardino Base Line any further E. with the requisite degree
of accuracy. Last 20 chs. mostly 2nd rate, moderately wavy prairie
valley--

Returned to the corner on the San Bernardino Base Line to R's.
17 & 18, I ran that Base Line with Variation of Needle 13° 30' E.
through prairie hills, 1st mile on S. boundary of Township 1 North,
Range 18 West.

Set post from which bears
Red Oak S. 80° W, 31 lks. 11 ins. dia. x
Red Oak, N. 4° W. 56 lks., 6 ins. dia. x

Last 8 chs. 2nd, rolling prairie.

NOTE: Finding it impracticable to continue the line further West than
8 chs. 50 lks. with the requisite degree of accuracy; the high
rugged hills commencing at that point. Returned on the line 100
chs. W. of corner to R's. 17 & 18 and ran one south.

South 13.50 About 100 lks. W. of sulphur Branch - course S. thence due
West 27.00 Through Township 1 South, Range 18 West, Over hills
31.80 To small valley.
North 9.00 Stake W. of Range line between 17 & 18, thence, I run
13.50 Through Valley - level prairies
To hills.
To San Bernardino Base Line, then due West, continue S.B. Base Line,
31 chs. 80 lks.
8.20 8 chs. 20 lks.

#40. 00 chs., making 40 chs. on the San Bernardino Base, W. of
corner to R's. 17 & 18, at which set 1/4 Sec.
#40.00 1/4 Sec. post from which bears,
Post Oak, S. 77 W. 50 lks. 20 in. dia.
Red Oak N. 23.30 W., 20 lks, 8 in. dia.
41.00 From hills to valley
42.50 To deep ravine, dry, 70 lks. wide, course S.
45.00 Cross another deep ravine, dry, 40 chs. wide, course S. 30° E.

West. 48.00 Cross valley, course S. 30° E. for about 80 chs. & N. 30 W. for about
30 chs. thence nearly N for about 60 chs.
53.24 W. of S.E. corner of T. 1 N., R. 18 W.
A red oak tree on S. side of steep hill 22 in. dia. marked with a
x & T. 1 S., R. 18 W. S. 1., T. 1 N., R. 18 W., S. 36--from which bears
Two red oaks, S. 79 E-162 lks., T. 1 S., R. 18 W., S. 1, 33 in. dia.
N. 80 E, 8 lks., 1 N., 18 W. S. 36, 15 in. dia.

Last 53.23 chs, variable, level, wavy very
broken-2nd 3rd rate, mostly prairie, skirted with scrub on the high
hills. Compelled to discontinue this Base Line to the W. owing
to abrupt rocky and scrub hills.

NOTE: Ascertained the variation of the Needle on the Night of 10th Jan.,
1853, at a point in the Valley about 2 miles S.W. of the 3rd mile post
on the range line between R's. 16 & 17, the night being very favor-
able- the variation was found to be 13° 30' E. taking the N. star
on the meridian--the last mile could not be extended further than
8.20 chs. E. of 1/4 Sec. post, owing
to too rough hills to measure correctly--apparently elevation above

71

LINES NORTH
of
SAN BERNARDINO BASE LINE, S. BOUNDARY OF
TOWNSHIP 1 NORTH, RANGE 18 WEST.

valley below, 900 feet, and in the opinion of some, 1000 feet
Variation of the Needle 13°30' E.

Returned to a post set at 32.63 chs. on the 2nd mile N. of the
San Bernardino Base Line, on the Range line between R's. 17 & 18, and
continued the offset lines through T. 1 N., R. 18, as follows:

WEST	1st mile through T. 1 N., R. 18 W.
3.00	To foot of prairie hills
40.00	Crossed left edge of road, leaving from Los Angeles to Santa Barbara, course N. 88° W.
52.50	Cross same road, course S. W.
80.00	Set stake, one mile W. of Range Line. 2nd mile, T. 1 N., R. 18 W.
8.50	To wavy valley.