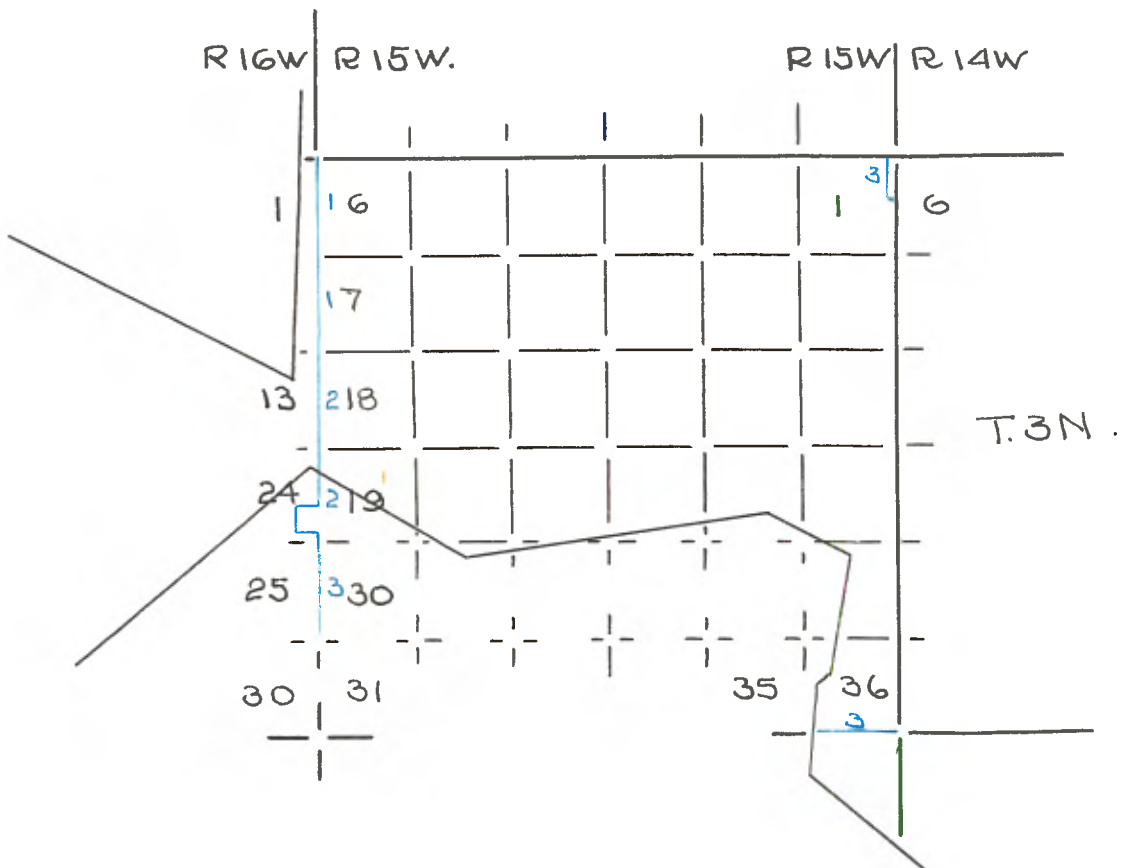


Copied from Photographic Copies
furnished by
U. S. General Land Office
Washington, D. C.



Blue lines run by M.G. Wheeler - 1874

80.00 Set an Oak post 3 in. square 4 feet long in stone mound for the N.W. Cor. to fractional Sec. 1.
Deposited charred stake and set granite stone 15x12x5 14 inches deep for cor. to Tps. 3 & 4 N., Rs. 15 & 16 West, said cor. stands in Placartas Valley about 80 links south of the Road.
A double black oak 15 and 20 in. dia. bears North 130 links distant.
A Black oak 15 in. dia. bears S. 84° E., 75 lks.
Land level gravelly soil, 2nd rate.
Timber black oak, cherry and sycamore in the valley.
October 12th, 1874.

WEST BOUNDARY

Begin at the West boundary of Tp. at the fractional corner 30 chains North of the cor. to Secs. 30 and 31, I run,
North on a random line along the West boundary of Tp. 3 N., R. 15 West
Var. 14° East
Setting temporary stakes at proper distances for Sec. and $\frac{1}{4}$ Sec. Corners and at
357.47 Intersected the North boundary of Tp. 3 N., R. 16 W. 237 links West of the established corner common to the two Tps.
Being satisfied that the very apparent error was in the Tp. lines of Tp. 3 N., R. 16 West, I run
from the established N.W. corner of Tp. 3 N., R. 15 W. on a true line along the West boundary, Sec. 6,
Var. 14° E.
7.00 Ascend to rolling brushy mesa.
27.47 Top of low ridge course E. and West.
Set granite 16 x 8 x 8 10 in. deep for the $\frac{1}{4}$ Sec. corner, Lyon station on the Twp. 6, Fort Tejon Road bears South 20° West
42.00 A Ravine, 30 links wide, course West
51.50 A ravine, 50 links wide, runs West
67.00 Top of sharp ridge, course E. and W., Descend.
67.47 Set granite stone 16 x 14 x 6 10 in. deep deposited charred stake and raised stone mound for the Cor. to Secs. 6 & 7 on the south slope of hills.
Land rolling gravelly brushy and 3rd rate.
No timber.

South 0° 23' W. on a true line on West boundary Sec. 7.
Var. 14° E.
3.00 Enter small valley, course West.
4.00 Dry creek 40 links wide, runs West.
15.00 Leave valley ascend.
20.00 Top of low ridge, course E. & W. the house at Lyon Sta. bears S. 72° W.
22.00 Enter timbered ravine, course west.
24.00 A cottonwood tree 18 in. dia. on line.
25.60 Dry creek, 15 links wide, runs west.
28.00 Leave ravine and ascend to rough hills.
40.00 Set oak post 3 in. square 4 feet long in a stone mound for the $\frac{1}{4}$ Sec. corner on the North slope of a brushy hill.
55.00 Top of ridge, course E. and West.
76.00 To the east base of a prominent tower shaped bluff, 200 feet diam. and 100 feet high
80.00 To a granite boulder 5 feet high, 4 feet dia. 4 feet in dia., which I marked for the cor. to Secs. 7 and 18, It stands at the head of a small ravine running S. West.
Land rolling valleys fertile.

T. 3 North, Range 15 W., S.B.M.

Timber

Scattering Sycamore in ravine.

October 15, 74.

- South 0° 23' West true line on West Boundary Sec. 18.
- 50.00 A gully 20 links wide, course west.
15.50 Ravine 100 links wide, runs West
27.10 Trail in ravine 100 lks. wide, course west.
38.00 Ravine 50 links course west.
50.00 Set granite for $\frac{1}{4}$ Sec. Cor. 16 x 12 x 6 10 in. deep on the west slope of a smooth adobe hill.
A Black Oak 15 in. dia. bears N. 81° W. 110 lks.
40.50 Old road to Fort Tejon, course E. and W.
50.00 Top of dividing ridge of San Fernando Mountains, course East & West.
House at Toll Gate on new road S. 65° W.
58.00 Canon 75 links wide, course S.W.
65.00 Old Fort Tejon Road, course S.W. and N.E.
68.00 Canon 50 links wide, runs S.W.
69.00 Low ridge house at Toll gate N. 83° W.
76.50 Gulch 40 lks. wide, course West.
80.00 Set a granite 20x10x10 in. low ridge for Cor. to Secs. 18 & 19,
Deposited charred stake, set cor. stone 15 in. deep and raised stone mound
Land very badly broken unfit for cultivation.
Timber black oak in ravine on North slope of the mountains.
South 0° 23' West, true line along West side of Sec. 19.
Var. 14 E.
4.00 Ravine 50 links wide, course Northwest
9.80 Set an alder post 3 in. square and 4 feet long in a stone mound at the intersection at the north line of Rancho San Fernando
13.00 A gulch 50 links wide, runs West.
20.00 Low ridge, course East and West.
34.00 Ravine 150 links wide, course S. 10° W.
40.00 Set alder post 3 in. square, 4 ft. long in earth mound for the $\frac{1}{4}$ Sec. Cor. on the west face of a hill
50.00 Offset on account of extreme roughness of the country
North 89° 37' W.
8.40 To station
South 0° 23' West.

- 1.00 Fort Tejon road, course N.W. and S.E.
3.00 Dry creek 15 links wide, runs S.E.
24.00 To station
South 89° 37' E.
1.00 Fort Tejon road, course N. and S.
3.00 Creek 4 links wide, runs S.E.
8.00 To station, a true line of Tp. 1.00 links South of a bluff bank 50 feet high and 74.00 from cor. of Secs. 18 & 19 and thence, continuing the measurements.
South 0° 23' West.

- 75.50 Dry creek 20 links wide, runs S.E.
77.00 Fort Tejon Road course N.W. and S.E.
80.00 To cor. of Secs. 19 and 30, deposited charred stake, set sand stone, 20 x 12 x 6 and raised stone mound, set the cor. stone 12 in. deep and it stands on the east point of low ridge at the south side of the mouth of a canon known as San Fernando Pass.

T. 3 North, Range 15 W., S. B. M.

A black oak 3 in. dia. brs. N. $33\frac{1}{2}$ W. 152 lks.
A sycamore 8 in. dia. N. 84° E. 340 links.
Land rough unfit for cultivation, a little willow, oak, and
sycamore in the canon.

S. 0° 23' W. true line on West side of Sec. 30, Var. 14° E.
1.50 Gully 10 links wide, runs East, ascend.
18.00 Top of ridge, course East and West.
25.00 Ravine 50 links wide, runs West.
35.00 Ravine 50 links wide, runs southwest.
38.00 Low ridge, course east and west.
40.00 Set sand stone 18 x 12 x 3 14 in. deep on south face of steep
hill for $\frac{1}{4}$ Sec. corner
44.00 Foot of hill, enter level mesa.
50.00 To post and established fractional corner.
Land second rate, rolling good grazing.
No timber.

October 16th, 1874

From the established cor. to Secs. 35 and 36 on the south boundary
of the township east true line on south side of Sec. 36.
Var. 14° E.
18.30 To post and mound established at the San Fernando at a point S. 30°
E., 29.00 chs. from stake, S.F. 10.
26.05 To foot of hills, leave San Fernando Valley, could find no trace of
established fractional corner.
32.00 Top of low ridge, course N. & S.
34.00 Bunch of juniper bushes 30 feet dia. 50 links south of line
40.00 Set granite 15 x 12 x 8 for $\frac{1}{4}$ Sec. Cor. on North slope of smooth
hill.
49.00 Ravine 100 links wide, runs South.
55.00 Ridge, course N. and S.
65.10 To a sycamore tree, 30 in. dia. enter ravine 200 lks. wide, running
South.
64.50 Gully 10 links wide, runs South.
71.12 To black oak 16 in. dia.
77.60 Top of sharp ridge, course N. and S. set granite 15 x 10 x 5 for a
witness to corner of Township 2 and 3 North, Ranges 14 and 15 W.
deposited charred stake and set cor. stone 10 in. deep and raised
mound of stone; could carry line no further on account of deep
gulch ahead.
Land West 26 chs. level stony, 3rd rate, balance smooth hills.
Timber scattering sycamore in ravine.

From the established $\frac{1}{4}$ Sec. Cor. on East side of Sec. 1, I run
West on offset line.
Var. 14° E.
6.00 To station
North, on a random line.
Var. 14° E.
38.15 Intersect the North line of Secs. 1, 29 lks. W. of the established
fractional cor. of the Tp.