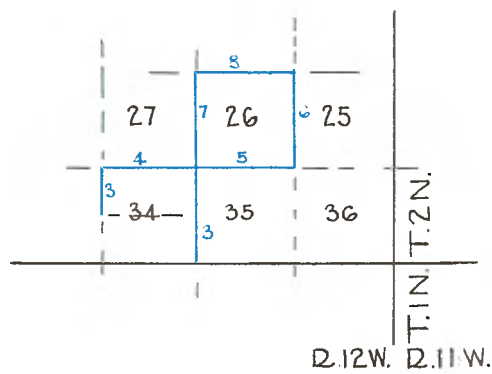


Copied from Photographic Copies
furnished by
U.S. General Land Office
Washington D. C.



Blue, lines run by Legrand Friel - 1906

PRELIMINARY OATHS OF ASSISTANTS.

We, Clarence J. Park and Edwin S. Bittmann, do solemnly swear that we will well and faithfully execute the duties of chainmen; that we will level the chain upon even and uneven ground, and plumb the tally pins, either by sticking or dropping the same; that we will report the true distances to all notable objects, and the true lengths of all lines that we assist in measuring, to the best of our skill and ability, and in accordance with instructions given us, in the survey of

T. 2 N., R. 12 W., S. E. M.

Clarence J. Park, Chainman.

Edwin S. Bittmann, Chainman.

Subscribed and sworn to before me this 14th day of July, 1906.

Mary A. Conners,

Notary Public.

We, _____ and _____ do solemnly swear that we will well and truly perform the duties of moundmen in the establishment of corners, according to the instructions given us, to the best of our skill and ability, in the survey of

_____, Moundman.

_____, Moundman.

Subscribed and sworn to before me this ___ day of ___ 190

We, _____ and _____ do solemnly swear that we will well and truly perform the duties of axmen in the establishment of corners and other duties, according to instructions given us, to the best of our skill and ability, in the survey of

_____, Axman.

_____, Axman.

Subscribed and sworn to before me this ___ day of ___, 190

I, Abel Garnier, do solemnly swear that I will well and truly perform the duties of flagman according to instructions given me, to the best of my skill and ability, in the survey of

T. 2 N., R. 12 W., S. E. M.

Abel Garnier, Flagman.

Subscribed and sworn to before me this 14th day of July, 1906.

Mary A. Conners,

SEAL SEAL

Notary Public.

Subdivision of T. 2 N., R. 12 W.

Chains.

For the testing of the transit and solar, see Book A.

I commence at 1/4 Sec. Cor. between Secs. 33 and 34, which is a granite stone, 14 x 12 x 8 ins., above the ground, marked and witnessed as described by the surveyor general.

July 20: at 8h. 10m., a.m. l.m.t., I set off 34°12' N. on lat. arc; 20°45' on decl. arc, and determine a meridian with the solar at the 1/4 Sec. Cor. bet. Secs. 33 and 34.

Thence I run-

North bet. Secs. 33 and 34.

Ascending through dense scrub oak and white thorn.

A trail, bears N. E. and S. W.

Top of ridge bears E. and W. and cross trail, course E. and W.

Descend steep side hill through dense undergrowth of brush.

Millard Canon, 50 lks. wide, course west.

Ascend.

Set a granite stone 24 x 12 x 12 ins. 18 ins. in the ground, for Cor. of Secs. 27, 28, 33 and 34; marked with three notches on E. and one notch on S. edge; and raise a mound of stone 4 ft. base, 2 ft. high W. of the Cor. Pits impracticable.

Land, mountainous.

Soil, rocky, 4th rate.

Dense undergrowth, scrub oak and white thorn.

Mountainous land, 40.00 chains.

July 20, 1906.

July 21: at 8h. 15m., a.m., l.m.t. I set off 34°12' on the lat. arc, 20°35' N. on decl. arc, and determine a meridian with the solar at the Cor. of Secs. 2, 3, 34 and 35 on S. Edy. of Township.

Thence I run-

North bet. Secs. 34 and 35.

Ascend through dense scrub oak and white thorn.

A trail to Echo Mountain, course E. and W.

Summit of spur from Echo Mountain, bears S.E., trail to Echo Mt.

A trail to Echo Mountain, course S. E. and N. W.

A trail, course S. E. and N. W.

A creek, 25 lks. wide, course S. E., ascend.

Summit of spur bears W., descend.

3.30
16.24

28.94

40.00

9.52
15.15

17.28
19.31
22.74
36.36

Subdivision of T. 2N., R. 12 W.

Chains.

40.00

Set a granite stone, 24 x 12 x 12 ins., 15 ins. in the ground, for 1/4 Sec. Cor., marked 1/4 on W. face; and raise a mound of stone, 2 ft. base, 2 ft. high, W. of Cor. From Cor.—

A maple 10 ins. diam. bears N. 31°20'E. 38 lks. dist., marked 1/4 S 35 B T.

A birch, 16 ins. dia. bears N. 83°W. 50 lks. dist., marked 1/4 S 34 B T.

July 21, 1906.

40.15

A creek, 20 lks. wide, course S. W., ascend.

43.15

Summit of spur bears E., descend.

47.35

A creek, 20 lks. wide, course S. E., ascend.

53.79

Castle Canon trail, course E. and W.

50.00

Set a granite stone 30 x 15 x 12 ins., 22 ins. in the ground for Cor. of Secs. 26, 27, 34 and 35, marked with one notch on S. and two notches on E. edge; and raise a mound of stone 2 ft. base, 2 ft. high W. of the Cor. Pits impracticable.

Land mountainous.

Soil, rocky, 4th rate.

Undergrowth, scrub oak and white thorn.

Mountainous land, 50.00 chains.

July 22, 1906.

July 23: at 8h. 30m., a.m., l.m.t. I set off 34°13'N., on lat. arc; 20°12'W. on decl. arc, and determine a meridian with the solar at the Cor. of Secs. 26, 27, 34 and 35.

Thence I run—

40.00

West on a random line bet. Secs. 27 and 34.

51.71

Set temp. 1/4 Sec. Cor.

Intersect N. and S. line 1.53 chs. S. of Sec. Cor.

Set a granite stone, 20 x 12 x 12 ins., 15 ins. in the ground for closing Cor. of Secs. 27 and 34, marked with one notch on S. and five notches on N. and O O on E. face; and raise a mound of stone 2 ft. base, 2 ft. high E. of Cor. Pits impracticable.

July 23, 1906.

4.45

Thence E. on a true line between Secs. 27 and 34.

19.70

Ascend through dense scrub oak and white thorn.

Top of a ridge, bears N. and S., descend steep side hill.

Millard Canon, 40 links wide, course S. W.

Ascend.

37.26

Trail to Dawn Mine, course N. and S.

37.92

P.E.Ry. Co's tracts, course N. and S.

39.77

P.E.Ry. Co's tracts, course N. and S.

Subdivision of T. 2 N., R. 12 W.

Chains.

- 41.71 Set a granite stone 24 x 10 x 8 ins. 18 ins. in the ground for 1/4 Sec. Cor., marked 1/4 on N. face; and raise a mound of stone, 2 ft. base, 2 ft. high N. of Cor. Pits impracticable. From Cor.
 An oak 7 ins. dia. bears S. 80°45' W. 27 lks. dist., marked 1/4 S 34 B T.
 An oak 9 ins. dia. bears N. 83° W. 43 lks. dist., marked 1/4 S 27 B T.
- 42.50 P.E.Ry. Co's tracts, course N. and S.
 66.51 Trail to Alpine Tavern, course N. and S.
 68.31 Summit of ridge, course N. and S., descend.
 81.71 The Cor. of Secs. 26, 27, 34 and 35.
 Land, mountainous.
 Soil, rocky, 4th rate.
 Undergrowth, scrub oak and white thorn.
 Mountainous land, 81.71 chains.

July 24, 1906.

July 26: at the Cor. of Secs. 26, 27, 34 and 35, I set off 19°30' N. on decl. arc, and at 12h 03', l.m.t. observe the sun on the meridian: the resulting latitude is 34°13' which is about the proper lat.

Thence I run-

- East between Secs. 26 and 35, ascend through dense scrub oak.
 23.21 Summit of ridge, bears N. and S.
 Descend.
 33.81 Intersect line 2 - 3 of the Wanton Lode Survey No. 4237, of the Monitor Consolidated Lode Claims, 5.53 chs. south of Cor. No. 3.
 38.94 A trail from Alpine Tavern to Inspiration point, course N. W. and S. E.
 40.00 Set a granite stone 20 x 12 x 12 ins., 15 ins. in the ground, for 1/4 Sec. Cor., marked 1/4 on N. face; and raise a mound of stone, 2 ft. base, 2 ft. high N. of Cor. Pits impracticable.

July 26, 1906.

- 42.90 Intersect line 1 - 4 of the Wanton Lode Survey No. 4237, of the Monitor Consolidated Lode Claims, 5.53 chs. south of Cor. No. 4.
 48.34 A trail, bears N. and S.
 52.27 A trail to Eaton's Canon, course N. W. and S. E.
 57.27 Dry creek, 50 lks. wide, course S. E. Ascend.
 74.72 Intersect line 1 - 2 of the Ella Lode Survey No. 4237 of the Monitor Consolidated Lode Claims, 5.53 south of

Subdivision of T. 2 N., R. 12 W.

Chains.

Cor. No. 2.
75.86 Point of spur bearing S.
80.00 Set a granite stone, 24 x 12 x 12 ins., 18 ins. in the ground, for Cor. of Secs. 25, 26, 35 and 36, marked with 1 notch on S. and 1 notch on E. edge; and raise a mound of stone 2 ft. base and 2 ft. high, W. of Cor. Pits impracticable. From Cor.-

An oak 14 ins. dia. bears N. 42°30'E. 52 lks. dist., marked T 2 N R 12 W S 25 B T.
A bay tree 8 ins. dia. bears S. 79°45'E. 77 lks. dist., marked T 2 N R 12 W S 36 B T.

An oak 10 ins. dia. bears S. 8°40'W. 87 lks. dist., marked T 2 N R 12 W S 35 B T.
A fir 30 ins. dia. bears N. 21°30'W. 202 lks. dist., marked T 2 N R 12 W S 26 B T.

Land, mountainous.
Soil, rocky, 4th rate.
Dense undergrowth, scrub oak and white thorn.
Mountainous land, 80,00 chs.

July 27, 1906.

July 30: at 8h.15m., a.m., l.m.t. I set off 34°13'N. on lat. arc; 18°39'N. on decl. arc, and determine a meridian with the solar at the Cor. of Secs. 25, 26, 35 and 36.

Thence I run-

1.00 N. 0°1'E. bet. Secs. 25 and 26: descend.
A gulch, 20 lks. wide, course S. E.
Ascend high mountain.
5.53 Intersect line 2 - 3 of the Ella Lode Survey No. 4237 of Monitor Consolidated Lode Claims, 5.28 east of Cor. No. 2.
40.00 Set a granite stone 18 x 10 x 8 ins. 12 ins. in the ground, for 1/4 Sec. Cor., marked 1/4 on W. face; and raise a mound of stone 2 ft. base and 2 ft. high W. of Cor. Pits impracticable.

July 30, 1906.

56.82 Ascend gradually.
A wash, 60 lks. wide, course S. E. and ascend S. side of Mt. Markham.
78.93 Top of a ridge extending S. W. from Mt. Markham to Mt. Lowe. Descend.
80.00 Set a granite stone 24 x 10 x 8 ins. 18 ins. in the ground for Cor. of Secs. 23, 24, 25 and 26; and raise a mound of stone 2 ft. base, and 2 ft. high W.

Subdivision of T. 2 N., R. 12 W.

Chains.

of Cor.	From Cor.
	An oak 8 ins. dia. bears N. 59°50'E. 48 lks. dist., marked T 2 N R 12 W S 24 B T.
	An oak 8 ins. dia. bears S. 54°00'E. 52 lks. dist., marked T 2 N R 12 W S 25 B T.
	An oak 6 ins. dia. bears S. 55°15'W. 11 lks. dist., marked T 2 N R 12 W S 26 B T.
	An oak 7 ins. dia. bears N. 64°30'W. 67 lks. dist., marked T 2 N R 12 W S 23 B T.

Land, mountainous.
Soil, rocky, 4th rate.
Dense undergrowth, scrub oak and white thorn.
Mountainous land, \$0.00 chs.

July 31, 1906.

	Aug. 2: at 8h. 10m. a.m., l.m.t., I set off 34°13'N. on lat. arc, 17°55'N. on decl. arc, and determine a meridian with the solar at the S. W. Cor. of Sec. 26, from which I run north. Ascend.
11.52	Top of a ridge, bears E. and W., descend.
	Flag pole on summit of Mt. Lowe, bears N. 50°42'E.
17.64	Sunset trail to Alpine Tavern, course E. and W.
22.18	P.E.Ry. tract, bears E. and W.
35.88	Millard Canon, 30 lks. wide, course W., ascend.
40.00	Set a granite stone 24 x 10 x 8 ins., 18 ins. in the ground, for 1/4 Sec. Cor., marked 1/4 on W. face; and raise a mound of stone 2 ft. base, and 2 ft. high W. of Cor. From Cor.
	A fir 36 ins. dia. bears S. 23°30'E. 15 lks. dist., marked 1/4 S 26 B T.
	A fir, 36 ins. dia. bears S. 65°15'W. 80 lks. dist., marked 1/4 S 27 B T.

August 2, 1906.

41.52	Top of a spur extending W. from Mt. Lowe, descend.
44.70	Branch of Millard Canon, course S. W. Ascend steep mountain side.
68.79	Summit of ridge from Mt. Lowe. Flag pole on summit of Mt. Lowe bears S. 75°42'E. Descend very steep side hill covered with dense under- growth into Bear Canon.
80.00	Set a granite stone 24 x 14 x 12 ins., 18 ins. in the ground for Cor. of Secs. 22, 23, 26 and 27, marked with two notches on S. and E. edges, and raise a mound of stone, 2 ft. base and 2 ft. high W. of Cor. Pits impracticable. Land, mountainous. Soil, rocky, 4th rate. Dense undergrowth, scrub oak and white thorn. Mountainous and dense undergrowth \$0.00 chs.

Subdivision of T. 2 N., R. 12 W.

Chains.

Aug. 6: at 7 h. 50 m., a.m., l.m.t. I set off $34^{\circ}14'N.$
on lat. arc: $16^{\circ}52'N.$ on decl. arc, and determine a
meridian with the solar at the Cor. of Secs. 22, 23,
26 and 27: from which I run
East on a random line between Secs. 23 and 26.
40.00 Set temp. $1/4$ Sec. Cor.
80.00 Intersect N. and S. line 16 links north of corner of
sections 23, 24, 25 and 26.

Thence I run-

N. $89^{\circ}53'W.$ on a true line between Secs. 23 and 26:
descend through dense undergrowth.
40.00 Set a granite stone 20 x 12 x 12 ins. 15 ins. in the
ground, for $1/4$ Sec. Cor., marked with $1/4$ on N. face:
and raise a mound of stone 2 ft. base and 2 ft. high,
N. of Cor. Pits impracticable.
80.00 The Cor. of Secs. 23, 24, 25 and 26.
Land, mountainous.
Soil, rocky; 3rd rate.
Dense undergrowth, scrub oak and white thorn.
Mountainous land and dense undergrowth, 80.00 chs.

August 6, 1906.

GENERAL DESCRIPTION.

The land in this portion of the township is rough
and mountainous and lies on the southern slope of
the Sierra Madre Mountains, and is covered with a
dense undergrowth of brush, scrub oak, white thorn
and iron wood.

FINAL OATHS OF DEPUTY SURVEYOR AND HIS ASSISTANTS.

+++++

LIST OF NAMES.

A list of the names of the individuals employed by Legrand Friel, United States Deputy Surveyor, to assist in running, measuring, and marking the lines and corners described in the foregoing field notes of the survey of T. 2 N., R. 12 W. showing the respective capacities in which they acted:

- Clarence J. Park ,Chainman.
- Edwin S. Bittmann ,Chainman.
- _____ ,Moundman.
- _____ ,Moundman.
- _____ ,Axman.
- _____ ,Axman.
- Abel Garnier _____ ,Flagman.

FINAL OATH OF ASSISTANTS.

We hereby certify that we assisted Legrand Friel, United States Deputy Surveyor, in surveying all those parts or portions of the Subdivision Lines of T.2 N., R.12 W. of the San Bernardino meridian, _____ of _____, which are represented in the foregoing field notes as having been surveyed by him and under his direction; and that said survey has been in all respects, to the best of our knowledge and belief, well and faithfully surveyed, and the corner monuments established, according to the instructions furnished by the United States Surveyor General for California.

- Clarence J. Parks _____ ,Chainman.
- Edwin S. Bittmann _____ ,Chainman.
- _____ ,Moundman.
- _____ ,Axman.
- Abel Garnier _____ ,Flagman.

Subscribed and sworn to before me this 12th day of October, 1906.

Mary A. Conners,

SEAL

SEAL

Notary Public.