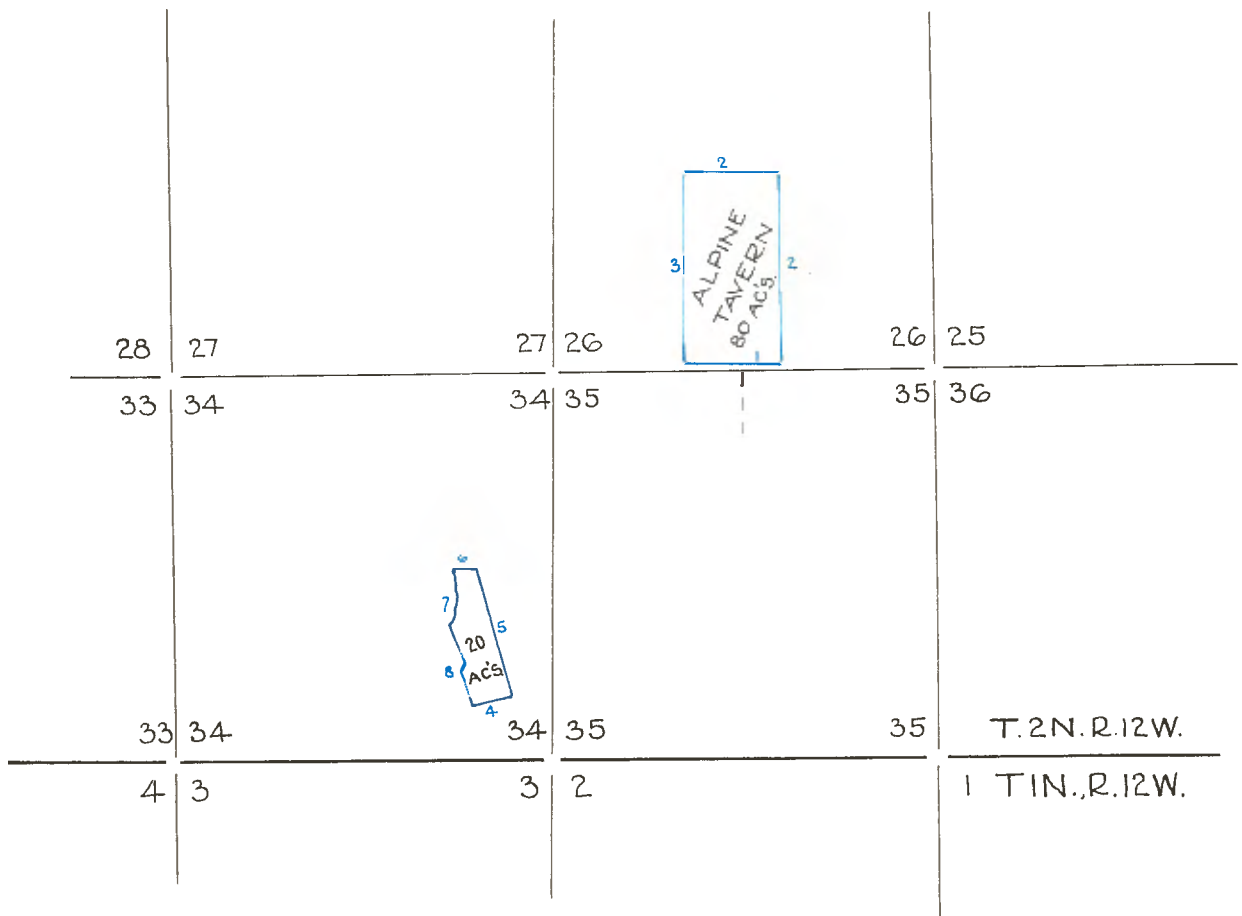


Copied from Photographic Copies
 furnished by
 U. S. General Land Office
 Washington, D. C.



Blue lines, run by Legrand Friel - 1906

Copied from Photographic Copies
furnished by
U.S. General Land Office
Washington D. C.

PRELIMINARY OATHS OF ASSISTANTS.

We, Clarence J. Park and Edwin S. Bittmann do solemnly swear that we will well and faithfully execute the duties of chainmen; that we will level the chain upon even and uneven ground, and plumb the tally pins, either by sticking or dropping the same; that we will report the true distances to all notable objects, and the true lengths of all lines that we assist in measuring, to the best of our skill and ability, and in accordance with instructions given us, in the survey of the 50 Acre Tract at Alpine Tavern and 20 Acre Tract, Echo Mt., in T. 2 N., R. 12 W., S. B. M.

Clarence J. Park, Chainman.

Edwin S. Bittmann, Chainman.

Subscribed and sworn to before me this 14th day of July, 1906.

Mary A. Conners,

SEAL SEAL

Notary Public.

We, _____ and _____ do solemnly swear that we will well and truly perform the duties of moundmen in the establishment of corners, according to the instructions given us, to the best of our skill and ability, in the survey of _____

_____, Moundman.

Subscribed and sworn to before me this _____ day of _____, 190

SEAL

We, _____ AND _____ do solemnly swear that we will well and truly perform the duties of axmen in the establishment of corners and other duties, according to instructions given us, to the best of our skill and ability, in the survey of _____

_____, Axman.

Subscribed and sworn to before me this _____ day of _____, 190

SEAL

I, Abel Garnier, do solemnly swear that I will well and truly perform the duties of flagman according to instructions given me, to the best of my skill and ability, in the survey of the 50 Acre Tract at Alpine Tavern, and 20 Acre Tract, Echo Mt., in T. 2 N., R. 12 W., S. B. M.

Abel Garnier, Flagman.

Subscribed and sworn to before me this 14th day of July, 1906.

Mary A. Conners,

SEAL SEAL

Notary Public.

80 Acre Tract of Alpine Tavern.

Chains.

For testing the transit and solar apparatus, see Book A.

Aug. 10: at 8h. 10m., a.m., l.m.t. I set off $34^{\circ}13'N$. on the lat. arc: $15^{\circ}44'N$. on the decl. arc, and determine a meridian with the solar at Sta. 1. Beginning at Sta. 1, which is a granite stone 24 x 12 x 12 ins., 18 ins. in the ground, marked 1 P E R Co., on N. E. face, and raised a mound of stone, 2 ft. base and 2 ft. high N. E. of Cor. From Cor.

An oak 8 ins. dia. bears N. $40^{\circ}30'E$. 45 lks. dist., marked 1 P E R Co. E T.

An oak 10 ins. dia. bears S. $20^{\circ}W$. 11 lks. dist., marked 1 P E R Co. B T.

The $1/4$ Cor. of Secs. 26 and 35, bears S. $63^{\circ}59'15"E$., 11.715 chs. dist.

Thence I run-

East.

Ascend.

- 1.52 Top of a ridge, bears N. and S.
Descend.
- 5.46 Intersect line 2 - 3 of the Wanton Lode Survey No. 4237 of the Monitor Consolidated Lode Claims 4.30 chs. south of Cor. No. 3.
- 10.61 A trail from Alpine Tavern to Inspiration Point, course N. W. and S. E.
- 14.55 Intersect line 1 - 4 of the Wanton Lode Survey No. 4237 of the Monitor Consolidated Lode Claims, 4.30 chains S. of Cor. No. 4.
- 20.00 A trail in Eaton's Canon and Sta. 2.
Set a granite stone, 24 x 12 x 10 ins. 18 ins. in the ground for S. E. Cor. of tract, marked 2 P E R Co on N. W. face, and raised a mound of stone 2 ft. base and 2 ft. high N. W. of Cor. From Cor.-
An oak 10 ins. dia. bears S. $28^{\circ}15'E$. 20 lks. dist., marked 2 P E R Co B T.
- Flagpole at summit of Mt. Lowe bears N. $5^{\circ}15'E$.

August 10, 1906.

Thence north:

Descend.

- 1.14 Eaton Canon trail, course E. and W.
- 1.52 A branch of Eaton's Canon, 15 lks. wide, course E.
Ascend.
- 8.94 Top of a spur, bears E.
Descend.
- 15.45 A branch of Eaton's Canon, 20 lks. wide, course S. E.
Ascend.
- 19.85 A trail, course E. and W.
- 27.02 Intersect line 1 - 2 of the Demosthenes Lode Survey No. 4237 of the Monitor Consolidated Lode Claims, 3.50 chs. west of Cor. No. 1.
- 27.58 Divide between Eaton's Canon and Millard Canon, course N. E. and S. W. Descend.
- 28.49 A trail to summit of Mt. Lowe.

50 Acre Tract of Alpine Tavern.

Chains.

- 31.52 A gulch; branch of Millard Canon, 15 lks. wide, course S. W., ascend.
 39.54 Top of a spur, bears W., descend.
 40.00 Sta. 3, 15 ft. S. of small ravine, a granite stone 30 x 12 x 8 ins., 22 ins. in the ground for N. E. Cor. of Alpine Tavern Tract; marked with 3 P E R Co. on S. W. face; and raised a mound of stone, 2 ft. base and 2 ft. high S. W. of Cor. From Cor.
 An oak 8 ins. dia. bears S. 43°30' W. 61 lks. dist., marked 3 P E R Co. B T.
 An oak 8 ins. dia. bears N. 11°30' W. 7.19 chs. marked 3 P E R Co. B T.

August 11, 1906.

- 5.59 Thence west along south slope of Mt. Lowe; descend. Intersect line 2 - 3 of the Demosthenes Lode, Survey No. 4237 of the Monitor Consolidated Lode Claims 9.74 chs. south of Cor. No. 3.
 14.70 A trail to Mt. Lowe, course N. W. and S. E.
 20.00 Sta. 4, set a granite stone, 30 x 12 x 10 ins., 22 ins. in the ground for N. W. Cor. of Alpine Tavern Tract; marked 4 P E R Co. on S. E. face; and raised a mound of stone, 2 ft. base, and 2 ft. high S. E. of Cor. From Cor.-
 An oak 8 ins. dia. bears S. 47° E. 81 lks. dist., marked 4 P E R Co. B T.
 An oak 8 ins. dia. bears N. 68° W. 32 lks. dist., marked 4 P E R Co. B T.

August 13, 1906.

- Thence south.
 Descend.
 3.15 A gulch, 15 lks. wide, course S. E., ascend.
 3.59 Intersect line 3 - 4 of the Chopin Lode, Survey No. 4237, of the Monitor Consolidated Lode, 8.31 chs. east of Cor. No. 3.
 5.00 To a point that is 55 ft. west of extreme west point of trail to Rainbow Springs.
 12.98 Intersect line 1 - 2 of the Chopin Lode, Survey No. 4237, of the Monitor Consolidated Lode 8.31 chs. east of Cor. No. 2.
 23.80 A branch of Millard Canon, 20 lks. wide, course W. Ascend.
 29.24 P.E.Ry. tract, course E and W.
 32.13 A trail bears E. and W.
 36.82 Top of a ridge, bears E. and W., descend.
 40.00 To Sta. 1, the place of beginning.

Land, mountainous.
 Soil, rocky, 4th rate.
 Dense undergrowth, scrub oak.
 Mountainous land, 120 chs.

August 14, 1906.

20 Acre Tract at Echo Mountain.

Chains.

For testing the transit and solar apparatus, see Book A.

Aug. 17: at 5h. 20m. a.m., l.m.t., I set off $34^{\circ}12'N.$ on the lat. arc: $13^{\circ}36'W.$ on the decl. arc, and determine a meridian with the solar at Sta. 1.

Sta. 1.- A point on the east line of the 200 foot right of way of the P.E.Ry. Co., from which point the Cor. common to Secs. 2 and 3, 34 and 35 , T. 1 and 2 N., R. 12 W., S.B.M., bears S. $33^{\circ}27'E.$ 16.11 chs. dist. Set a granite stone $30 \times 12 \times 6$ ins., 22 ins. in the ground for S. W. Cor. of 20 acre tract at Echo Mt., marked with 1 P E R Co on N. E. face, and raised a mound of stone 2 ft. base and 2 ft. high N. E. of Cor.

Thence I run-

6.24
7.575

N. $62^{\circ}10'E.$: Ascend.

Top of a spur, bears E. and ascend trail to Echo Mt. Sta. 2, set a granite stone $30 \times 16 \times 8$ ins. 22 ins. in the ground for S. E. Cor. of 20 acre tract at Echo Mt., marked 2 P E R Co, on N. W. face; and raised a mound of stone 2 ft. base and 2 ft. high N. W. of Cor.

Thence I run-

9.17
15.20
24.20
25.29
27.32
28.03

N. $28^{\circ}W.$

Descend through thick brush.

A trail, course N. W. and S. E.

A wash, 15 lks. wide, course E., ascend.

A trail, course E. and W.

A trail, course E. and W.

A pipe line, course E. and W.

Sta. 3, a granite stone, $30 \times 20 \times 10$ ins., above ground in place, marked with a cross at exact point of intersection, for the N. E. Cor. of 20 acre tract at Echo Mountain, marked 3 P E R Co, on east face; and raised a mound of stone 2 ft. base and 2 ft. high S.W. of Cor.

August 17, 1906.

1.80
2.48
3.08
3.60
4.19

Thence S. $89^{\circ}30'W.$, ascend.

A trail, course N. and S.

Top of a ridge, bears N. and S., descend.

A trail, course N. and S.

A trail, course N. and S.

The easterly line of the right of way of the P.E.Ry. Co. Set a granite stone, $15 \times 12 \times 12$ ins., 12 ins in the ground for N. W. Cor. of 20 acre tract at Echo mountain; marked 4 P E R Co., on S. E. face; and raised a mound of stone 2 ft. base and 2 ft. high S. E. of Cor. Thence southeasterly, along easterly line of P.E.Ry.Co's right of way, on a chord to correspond with a curve to the right of 386.6 ft. radius.

S. $0^{\circ}37'W.$

.58

The end of said curve: set a granite stone $15 \times 8 \times 8$ ins., 12 ins. in the ground for Cor. on said South-easterly line: marked 5 P E R Co, on E. face; and

20 Acre Tract at Echo Mountain.

Chains.

- raised a mound of stone, 2 ft. base and 2 ft. high E. of Cor.
- 0.669 Thence S. $3^{\circ}27'$ W. on tangent.
Beginning of a curve to left of 130.4 ft. radius.
Set a granite stone, 20 x 10 x 4 ins., 15 ins. in the ground for Cor. on said southeasterly line; marked 6 P E R Co, on E. face; and raised a mound of stone 2 ft. base and 2 ft. high E. of Cor.
- August 18, 1906.
- 0.224 Thence on chord to correspond with said curve S. $10^{\circ}41'$ E.
The end of said curve. Set a granite stone 20 x 10 x 6 ins., 15 ins. in the ground for Cor. on said southeasterly line; marked 7 P E R Co, on E. face; and raised a mound of stone 2 ft. base and 2 ft. high E. of Cor.
- 0.309 Thence S. $24^{\circ}45'$ E. on tangent.
Beginning of a curve to the right of 386.6 ft. radius.
Set a granite stone 20 x 10 x 8 ins., 15 ins. in the ground for Cor. on said southeasterly line; marked 8 P E R Co., on E. face; and raised a mound of stone 2 ft. base and 2 ft. high E. of Cor.
- 0.407 Thence on chords to correspond with a curve to the right of 386.6 ft. radius.
S. $22^{\circ}40'$ E.
To a point on curve.
- 0.407 S. $18^{\circ}24'$ E.
The end of said curve.
Set a granite stone 20 x 12 x 6 ins., 15 ins. in the ground for Cor. on said southeasterly line; marked 9 P E R Co., on E. face; and raised a mound of stone 2 ft. base and 2 ft. high E. of Cor.
- 0.702 Thence S. $16^{\circ}16'$ E. on tangent.
Beginning of a curve to the left of 135.8 feet radius.
Set a granite stone 20 x 12 x 6 ins., 15 ins. in the ground for Cor. on said southeasterly line; marked 10 P E R Co., on E. face; and raised a mound of stone 2 ft. base and 2 ft. high E. of Cor.
- 0.274 Thence on chords to correspond with a curve to the left of 135.8 feet radius.
S. $20^{\circ}01'$ E.
The end of said curve.
This station falls on the bank of a trail on a decomposed granite rock. Impracticable to raise a mound or mark a corner. I therefore drive an iron pipe 1 in. dia. and 18 ins. long, 12 ins. in the rock for Cor. on said southeasterly line.

August 20, 1906.

20 Acre Tract at Echo Mountain.

Chains.

- .506 Thence S. 23°45'E. on tangent.
Beginning of a curve to the right of 279.2 feet radius.
This Cor. falls in a trail. I drive an iron pipe
1 in. dia. 12 ins. long, flush with the ground for
Cor. on said southeasterly line; and raise a mound
of stone, 2 ft. base and 2 ft. high 3 ft. W. of Cor.
Thence on chords to correspond with a curve to the
right of 279.2 feet radius.
S. 15°59'E.
0.70 To a point on curve.
S. 9°27' East.
0.70 The end of said curve.
Set a granite stone 20 x 9 x 9 ins. 15 ins. in the
ground for Cor. on said southeasterly line; marked
with 13 P E R Co., on E. face; and raised a mound of
stone 2 ft. base and 2 ft. high E. of Cor.

August 22, 1906.

- .467 Thence S. 4°41'E. on tangent.
Beginning of a curve to the left of 79.2 feet radius.
Set a granite stone, 20 x 10 x 10 ins., 15 ins. in
the ground for Cor. on said southeasterly line; marked
with 14 P E R Co., on E. face; and raised a mound of
stone, 2½ ft. base and 2 ft. high E. of Cor.
Thence on chord to correspond with a curve to the left
of 79.2 feet radius.
S. 10°44'E.
.253 End of said curve.
Set a granite stone 20 x 10 x 8 ins. 15 ins. in the
ground for Cor. on said southeasterly line; marked
with 15 P E R Co., on E. face; and raised a mound of
stone E. of the Cor.
Thence S. 16°45'E. on tangent.
.642 Beginning of a curve to the right of 316.2 ft. radius.
Set a granite stone 24 x 10 x 8 ins. 18 ins. in the
ground for Cor. on said southeasterly line, marked 16
P E R Co., on E. face; and raised a mound of stone 2 ft.
base and 2 ft. high E. of Cor.
Thence on chords to correspond with a curve to the
right of 316.2 feet radius.
S. 15°04'30"E.
0.714 To a point on the curve.
S. 11°47'30"E.
0.714 The end of said curve.
Set a granite stone 24 x 14 x 12 ins., 18 ins. in the
ground for Cor. on said southeasterly line; marked
17 P E R Co., on E. face; and raised a mound of stone
2½ ft. base and 2 ft. high E. of Cor.

August 23, 1906.

20 Acre Tract at Echo Mountain.

Chains.

- 1.253 Thence S. $10^{\circ}09'$ E. on tangent.
Beginning of a curve to the right of 386.6 feet radius.
Set a granite stone, 18 x 14 x 12 ins., 12 ins. in the ground for Cor. on said southeasterly line; marked with 18 P E R Co., on E. face; and raised a mound of stone 2½ ft. base and 2 ft. high E. of Cor.
Thence on chords to correspond with a curve to the right of 386.6 feet radius.
S. $7^{\circ}19'$ E.
- 0.579 To a point on the curve.
S. $1^{\circ}39'$ E.
- 0.579 The end of said curve.
Set a granite stone 30 x 12 x 6 ins., 22 ins. in the ground for Cor. on said southeasterly line; marked with 19 P E R Co., on E. face; and raised a mound of stone, 2½ ft. base and 2 ft. high E. of Cor.

August 25, 1906.

- .708 Thence S. $1^{\circ}11'$ W. on tangent.
Beginning of a curve to the left of 79.2 feet radius.
Set a granite stone 18 x 8 x 6 ins., 12 ins. in the ground for Cor. on said southeasterly line; marked 20 P E R Co., on E. face; and raised a mound of stone 2½ ft. base and 2 ft. high E. of Cor.
Thence on chords to correspond with a curve to the left of 79.2 feet radius.
S. $6^{\circ}45'45''$ E.
- .332 To a point on the curve.
S. $22^{\circ}39'15''$ E.
- .332 The end of said curve.
Set a granite stone 22 x 14 x 8 ins., 17 ins. in the ground for Cor. on said southeasterly line; marked 21 P E R Co., on E. face; and raised a mound of stone 2½ ft. base and 2 ft. high E. of Cor.
- 7.785 Thence S. $30^{\circ}36'$ E. on tangent.
Beginning of a curve to the right of 458.2 feet radius.
Set a granite stone 24 x 12 x 8 ins., 18 ins. in the ground for Cor. on said southeasterly line; marked with 22 P E R Co., on E. face; and raised a mound of stone 2½ ft. base and 2 ft. high E. of Cor.
Old hotel foundation bears E. 55 feet.

August 31, 1906.

- .521 Thence on chords to correspond with a curve to the right of 458.2 feet radius.
S. $28^{\circ}26'30''$ E.
- 0.521 To a point on the curve.
S. $24^{\circ}07'30''$ E.
- 0.521 The end of said curve.
Set a granite stone 20 x 10 x 6 ins. 15 ins. in the ground for Cor. on said southeasterly line; marked with 23 P E R Co., on E. face; and raised a mound of

20 Acre Tract at Echo Mountain.

Chains.

- stone $2\frac{1}{2}$ ft. base and 2 ft. high E. of Cor.
Thence S. $21^{\circ}59'E$. on tangent.
1.036 To a point.
Set a granite stone 20 x 8 x 8 ins. 15 ins. in the
ground for Cor. on said southeasterly line; marked
with 24 P E R Co., on E. and raised a mound of stone
 $2\frac{1}{2}$ ft. base and 2 ft. high E. of Cor.
This Cor. falls at foot of foundation of old hotel.
Thence S. $10^{\circ}58'E$.
.91 South side of foundation of old hotel.
1.055 To a point.
A granite stone in place 24 x 15 x 6 ins. above ground,
marked with a cross at exact point of intersection
for Cor. on said southeasterly line; marked with 25
P E R Co., on E. face; and raised a mound of stone
 $2\frac{1}{2}$ ft. base and 2 ft. high E. of Cor.
Thence S. $28^{\circ}E$.
7.285 The point of beginning.

Land, mountainous.
Soil, rocky, 4th rate.
Dense undergrowth, scrub oak.
Mountainous land, 70.56 chains.

September 3, 1906.

GENERAL DESCRIPTION.

The 20 and 80 Acre Tracts of land are located upon the southern slope of the Sierra Madre Mountains, and is rough, mountainous land, covered with a dense undergrowth of scrub oak and white thorn.

Upon the 80 Acre Tract is located Alpine Tavern in the head of Millard Canon.

Upon the 20 Acre Tract is located the observatory the substation and hoisting machinery for the Incline Railroad.

The 20 Acre Tract and Alpine Tavern, which is located upon the 80 Acre Tract, is connected by an electric railway, some four miles in length. The hoisting machinery located upon the 20 Acre Tract, is at the upper terminus of the Incline Railway. The Incline Railway commences at Rubio Pavilion, is some 3,000 feet in length and has a total rise of 1300 feet.
