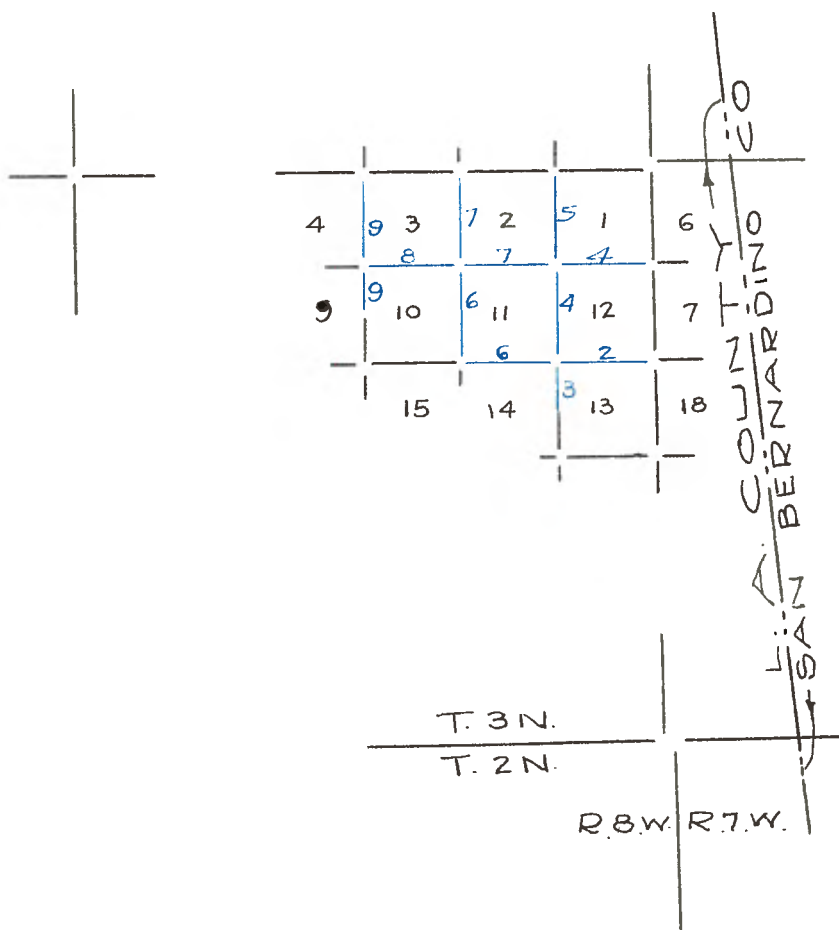


Copied from Photographic Copies
 furnished by
 U. S. General Land Office
 Washington, D. C.



Blue Lines Run by Wm. Minto 1882

PRELIMINARY OATHS OF ASSISTANTS.

I, D. J. Miller, do solemnly swear that I will well and truly perform the duties of compassman, according to instructions given me, and to the best of my skill and ability, in the survey of the T. 3 N., R. 5 W.

San Bernardino Meridian
D. J. Miller, Compassman
Subscribed and sworn to before me this 6th day of July, 1882.
Wm. Minto
U. S. Commissioner.

(Seal)

We, Geo. S. Hison and W. B. Mosher, do solemnly swear that we will well and faithfully execute the duties of chain carriers; that we will level the chain upon even and uneven ground and plumb the tally pins either by sticking or dropping the same; that we will report the true distance to all notable objects, and the true length of all lines that we assist in measuring, to the best of our skill and ability, and in accordance with instructions given us, in the survey of the T. 3 N., R. 5 W.

San Bernardino Meridian
Geo. S. Hison, Chairman
W. B. Mosher, Chairman.
Subscribed and sworn to before me this 6th day of July, 1882.
William Minto
U. S. Commissioner.

I, John Deff, do solemnly swear that I will well and truly perform the duties of axeman in the establishment of corners and other duties, according to instructions given me and to the best of my skill and ability, in the survey of T. 3 N., R. 5 W.

San Bernardino Meridian
John Deff, Axeman.
Subscribed and sworn to before me this 6th day of July, 1882.
Wm. Minto.
U. S. Commissioner.

T. 3 N., R. 5 W., S. B. M.

The Survey has been made with a Patent Burts Solar Compass made by John Roach, San Francisco and examined and properly adjusted by Wm. Schmols, Esq. of Sonoma City.

It being impracticable to chain West from Corner to Secs. 13, 15, 19 and 24, on E. boundary of Township on account of rough and broken mountains and abrupt land slide, I return to Cor. to Secs. 7, 12, 13, and 18 on E. boundary from which corner I run

West on a true line between Secs. 12 and 13.
Variation 15° 15' East.
Along W. slope over loose rocks.

19.00 High mountain spur bears N. 20° E.
 22.00 High peak bears S. about 20.00 chains dist.
 24.00 Ravine course N.
 26.00 Spur bears N.
 27.50 Ravine course N.
 28.00 Spur slopes N. and descend abruptly.
 31.00 Over granite and slate stone ledges very rough and broken.
 40.00 Set a granite stone 22x12x8 ins. 12 ins. deep in ground
 for $\frac{1}{4}$ Sec. Cor. marked:
 $\frac{1}{4}$ on N. face, from which bears
 A Fir 10 ins. dia. N. 72 $\frac{1}{2}$ ° E. 43 links dist.
 marked:
 $\frac{1}{4}$ S. B. T.
 A yellow pine 12 ins. dia. S. 86° E. 38 lks. dist.,
 marked: $\frac{1}{4}$ S. B. T.
 40.10 Stream 5 links wide in canon bears N. 30° E., and
 ascend very steep.
 Ascend gradual.
 56.00 Spur bears N. 10° W. and descend.
 61.00 Ravine in deep canon bears N. 20° E., and
 72.00 ascend steep
 80.00 Set a granite stone 24x20x7 ins. 16 ins. deep, in ground for
 corner to Secs. 11, 12, 13 and 14,
 marked:
 with 1 notch on E and 4 notches on S. edges raised
 stone mound alongside from which bears,
 A Double Yellow Pine 24 ins. dia. N. 64 $\frac{1}{2}$ ° W. 45 links dist.
 marked:
 T. 3 N. R. 8 W. S. 11 B. T.
 A Fir 6 ins. dia. S. 79° W. 49 links dist.
 marked: T. 3 N., R. 8 W. S. 14 B. T.
 A Yellow Pine 28 ins. dia. N. 270 E. 52 links dist.
 marked:
 T. 3 N., R. 8 W. S. 13 B. T.
 Land very rough and broken N. and N.E. Slope of mountain
 Soil, 2nd and 3rd rate.
 Yellow Pine, Fir Cedar and Oak timber. Some undergrowth of
 same.
 From corner to Secs. 11, 12, 13 and 14, I ran South on a true
 line bet. Secs. 13 and 14. Variation 15° E.
 Ascend very steep over loose rocks.
 13.00 Top of steep ascent and ascend gradually.
 18.00 Main divide between San Gabriel River and Swearthout Canon
 bears N.E. and S.W., and descend gradual.
 35.00 Head of ravine runs S. W.
 40.00 Set a Granite stone 20x14x7 ins. 12 ins. deep for $\frac{1}{4}$ Section
 Corner marked:
 $\frac{1}{4}$ on W. face from which bears,
 A Yellow Pine 26 ins. dia. N. 29° W. 30 links dist.
 marked:
 $\frac{1}{4}$ S. B. T.
 A Yellow Pine 10 ins. dia. N. 23 $\frac{1}{2}$ ° E. 63 links dist.
 marked $\frac{1}{4}$ S. B. T.
 In advance rough and broken mountain land unfit for
 cultivation and abrupt descent towards San Gabriel River
 Soil, 2nd and 3rd rate.
 Scattering Yellow Pine, Fir and Spruce timber.
 Bunch brush, deer brush and Chaparral undergrowth.

Returning to Cor. to Secs. 11, 12, 13 and 14,
I run
North between Secs. 11 and 12.

Variation 15° East.

Descend abruptly over loose rocks.

13.50

Ravine course N.E.

21.50

Deep ravine course N.E. and ascend N.E. slope.

33.50

Sharp spur bears N. 50° E.

38.00

Ravine bears N. 65° E. Steep ascent.

40.00

Set a granite stone 14x12x5 ins., 9 ins. deep in ground for
† section, corner marked:

† in W. face, from which bears

A Yellow Pine 60 ins. dia. S. 78½° E. 38 links dist.

Marked:

† S. B. T.

A Yellow Pine 28 ins. dia. N. 8° W. 92 links dist.

Marked:

† S. B. T.

47.50

Spur slopes N.E., and along N.E. slope.

52.00

Descend steep.

71.75

Ravine bears N. 30° E., and ascend.

73.50

Descend along N. E. slope.

80.00

Set a granite stone 22x14x7 ins. 12 ins. deep in ground
for Cor. to Secs. 1, 2, 11 and 12.

Marked with 1 notch on E. and 5 notches on S. edges,
from which bears,

A Yellow Pine 14 ins. dia. N. 17½° E., 19 links dist.

Marked:

T. 3 N. R. 8 W. S. 1 B. T.

A Yellow Pine 14 ins. dia. N. 61¼° W. 26 links dist.

Marked:

T. 3 N. R. 8 W. S. 2 B. T.

A Spruce 42 ins. dia. S. 13° E. 27 links dist.

Marked:

T. 3 N. R. 8 W. S. 12 B. T.

A Yellow Pine 10 ins. dia. S. 23° W. 42 links dist.

Marked:

T. 3 N. R. 8 W. S. 11 B. T.

Land broken and rough mountain, N. E. slope,

Soil, 3rd rate.

Yellow, Pine Fir, Spruce and Oak timber, some under-
growth of same.

Latitude by observation 34° 22'

East on a random line between Secs. 1 and 12.

Variation 15° 15' East.

Descend steep.

6.00

Ravine bears N. 30° E. and steep ascent.

14.00

Flat spur bears W. 30° E.

23.00

Descend abruptly.

28.50

Enter mouth of Canon and across same.

30.00

Wash 20 links wide course N.E. running into Swearthout
Canon and enter same.

35.50

Road to Mathis bears N.W. and S.E.

37.25

Enter plowed field 2.00 chains wide bears N.W. and S.E.

- 39.50 Enter grassy swamp and bogg bears N.W. and S.E.
40.00 Set temporary $\frac{1}{4}$ Sec. Cor.
46.90 Enter Potato patch N. and S.
51.00 Leave Potato patch N. and S.
52.10 Leave field rail fence bears N. and S.
54.50 Creek 5 links wide course S.E.
68.00 Wash 5 links wide course South.
69.50 Road in Swearthout Canon from Mathis to Sheep Creek.
Canon bears N.W. and S.E.
80.18 Intersect E. boundary 28 links North of Cor. to Secs.
1, 6, 7 and 12.
Thence,
M. 89°48' W. on a true line between Secs. 1 and 12.
Variation 14° 15' East.
- 40.09 Set a granite stone 24x15x8 ins. 15 ins. deep for
 $\frac{1}{4}$ Sec. Cor. marked:
 $\frac{1}{4}$ on N. face raised mound of stone 2 feet high
 $\frac{1}{4}$ feet at base alongside.
Pits impracticable.
- 80.18 To Cor. to Secs. 1, 2, 11 and 12.
Land mountainous swamp and field.
Soil, 1st, 2nd and 3rd rate.
Yellow Fir, Spruce and Oak timber on W. $\frac{1}{2}$ mile, sage-
brush and grass on E. $\frac{1}{2}$ mile.
North on a random line bet. Secs. 1 and 2.
Var. 15° 15' East.
- Along N.E. slope.
- 3.50 Spur bears N.E.
15.00 Enter Swearthout Canon, E. and W.
16.50 Mathis house and barn bears S. 75 $\frac{1}{2}$ ° E.
21.00 Road to Mathis and up the Canon connecting with trail
to rock creek, bears E. and W.
28.00 Mathis house bears S. 55° E. and Mathis barn bears
Mathis barn bears S. 56 $\frac{1}{2}$ ° E. Ascend steep and leave
Canon E. and W.
35.00 Along S.W. slope.
40.00 Set temporary $\frac{1}{4}$ Sec. Cor.
51.50 Head of ravine course S.W.
57.25 Main divide between Swearthout Canon and Mojave Desert
leaving N. 80° W. and S. 80° E.
descend.
62.50 Ravine N.E. and ascend steep.
78.50 Descend abruptly over loose rocks.
80.21 Intersect North boundary 24 links East of true corner
to Secs. 1, 2, 35 and 36.
Thence,
S. 0° 10' East and true line between 1 and 2.
Variation 14° 45' East
- 40.21 Set an Oak post 54x3x3 ins., 2 feet in ground and stone
mound for $\frac{1}{4}$ Sec. cor.,
Marked:
 $\frac{1}{4}$ S. on W. face, from which bears
A White Oak 6 ins. dia. S. 1 $\frac{1}{2}$ ° E. 92 links dist.
Marked:
 $\frac{1}{4}$ S. B. T.
A Black Oak, 3 ins. dia. S. 55 $\frac{1}{2}$ ° W., 60 links dist.
Marked:
 $\frac{1}{4}$ S. B. T.

80.21 The Cor. to Secs. 1, 2, 11 and 12,
Land Canon and steep mountains on either side.
Soil, 2nd and 3rd rate.
Good Yellow Pine, Fir, and Spruce timber on S. $\frac{1}{2}$ mile
N. $\frac{1}{2}$ mile timber scattering, sage brush, chaparral and
manzanita.

July 10th, 1882.

Returning to Cor. to Secs. 11, 12, 13 & 14,

I run

West on a true line between Secs. 11 and 14.

Variation 15° E.

Ascend steep.

2.00 Along W. slope.

10.00 Along divide.

15.00 Divide between San Gabriel River and Swearthout Canon
bears N.W. and S.E.

Descend.

32.00 Ravine course S.W.

38.50 Spur bears S.W.

40.00 Set a granite stone 16 x 10 x 6 ins. 8 ins. deep in ground
for $\frac{1}{4}$ Sec. Cor. marked:

$\frac{1}{4}$ on W. face raised stone mound alongside from
which bears

A Yellow Pine 42 ins. dia. S. $70\frac{1}{2}^{\circ}$ E. 135 links dist.
marked;

$\frac{1}{4}$ S. E. T.

45.50 Ravine course N. 50° W.

48.00 Abrupt spur, slopes N. 50° W. and ascend very steep

55.50 Deep ravine course S. and ascend over loose rocks very
steep

72.00 High mountain spur, slopes S.

80.00 Set a granite stone 18x14x7 ins., 9 ins. deep in ground
for Cor. to Secs. 10, 11, 14 and 15, raised mound of stone
2 feet high, 4 feet dia. at base alongside.

Pits impracticable.

Land abrupt and broken mountains.

Soil, 2nd and 3rd rate.

Yellow Pine, Fir, Spruce and Oak timber, scattering W.

$\frac{1}{2}$ mile, undergrowth of Chaparral and Buck-brush.

Latitude by observation $34^{\circ} 21'$.

From Cor. to Secs. 10, 11, 14 and 15,

I run

North between Secs. 10 and 11.

Variation 15° E.

Ascend.

28.00 Spur, slopes S. W.

40.00 Set in granite stone 12x9x5 ins. 7 ins. deep in ground
for $\frac{1}{4}$ Sec. Cor. marked;

$\frac{1}{4}$ on W. face, raised mound of stone 2 feet
high 4 ft. dia. at base alongside.

Pits impracticable.

42.50 Deep ravine course S.W. and ascend over loose rocks.

59.00 Leave loose rocks and ascend gradually,

61.50 Along summit.

67.00 Summit of main divide between San Gabriel River and
Swearthout Canon, bears N.W. and S.E. and

Descent steep

80.00 Set granite stone 20x20x4 ins., 12 ins. deep in
ground for Cor. to Secs. 2, 3, 10 and 11.

Marked:

with 2 notches on E. and 4 notches on S.

T. 3 N., R. 8 W., S. B. M.

edges raised mound of stone 2 feet high 4 feet at base
alongside.-- from which bears

A fir 12 ins. dia. N. $60\frac{1}{2}^{\circ}$ W. 41 lks. dist. marked
T. 3 N. R. 8 W. S. 3 B. T.

A Yellow Pine 60 ins. dia. N. $27\frac{1}{4}^{\circ}$ E. 94 links dist.
Marked T. 3 N. R. 8 W., S. 2 B. T.

Land mountainous rough and broken.
Soil 3rd and 2nd rates.
Yellow Pine, Fir, Spruce and Oak timber. Chinocpin Chaparral
and buck brush undergrowth.

East on a random line between Secs. 2 and 11.
Variation $14^{\circ} 45'$ East.

Ascend brushy spur.
8.50 Top of flat spur slopes North.
20.00 So. over same and descend.
29.00 Ravine, course N. 75° E. and ascend.
40.00 Set temporary $\frac{1}{4}$ sec. cor.
45.00 Descend, very steep.
55.00 Deep Canon, course N. 20° E. and ascend very steep N. W.
slope over loose rocks.
66.50 Top of steep ascent and along flat spur.
72.00 Descend moderately.
80.32 Intersect N. & S. line 22 lks. N. of cor. to Secs. 11, 12, 1 & 2.

Thence No. $89^{\circ} 51'$ W. on a true line between Secs. 2 and 11.

Variation $15^{\circ} 15'$ East.

40.10 Marked a Yellow Pine $\frac{1}{4}$ S. cor. On N. face for $\frac{1}{4}$ Sec. cor.
from which bears.

A Yellow Pine 60 ins. dia. N. $87\frac{1}{4}^{\circ}$ W. 66 links dist.
marked $\frac{1}{4}$ S. B. T.

A Yellow Pine 36 ins. dia. S. $45\frac{1}{4}^{\circ}$ W. 90 links dist.
marked $\frac{1}{4}$ S. B. T.

80.32 The cor. to Secs. 2, 3, 10 and 11.
Land very steep, mountainous, rough and broken.
Soil 2nd and 3rd rate.

Yellow Pine, Fir and Spruce timber.
Undergrowth of thin capin, chaparral and buck rush.

North on a random line bet. Secs. 2 and 3.
Variation $14^{\circ} 45'$ East.

Descend through brush and scattering timber.
31.50 Ravine course N.E.
35.00 Low spur slopes N.E.
38.50 Ravine course N.E.
40.00 Set temporary $\frac{1}{4}$ sec. cor. on low divide between waters
running into Swearthout Canon and rock Creek.
N. 45° E. and S. 45° W.
53.00 Cabin bears N. $78\frac{1}{4}^{\circ}$ E.
56.50 Cabin bears East.
57.50 Enter grass flat E. and W.

T. 3 N., R. 8 W., S. B. M.

- 58.00 Stream 2 links wide, course West.
 58.40 Road to Mathis and connects with trail to Rock Creek
 bears N. 80° W. and S. 80° E.
 60.00 S. over grass flat E. and W. and ascend.
 61.75 Low spur bears N. 70° W.
 63.40 Ravine course W. and ascend. Steep.
 73.50 Spur slopes W.
 76.60 Ravine course N.W.
 79.50 Spur slopes West.
 80.18 Intersect N. boundary 30 links West of cor. to Secs.
 2, 3, 34 and 35.
 Thence S. 0° 13' W. on a true line bet. Secs. 2 and 3.
 Variation 15° E.
- 40.18 Set a granite stone 12 x 13 x 8 ins. 7 ins. deep in
 ground for $\frac{1}{4}$ section cor. marked $\frac{1}{4}$ on W. face from which bears
 A Yellow pine 54 ins. dia. N. 14° W. 37 lks. dist.
 marked $\frac{1}{4}$ S. B. T.
 A Yellow pine 12 ins. dia. N. 62 $\frac{1}{4}$ ° E. 80 links dist.
 marked $\frac{1}{4}$ S. B. T.
- 80.18 To cor. to Secs. 2, 3, 10 and 11.
 Land mountainous. Slopes N.E. and N.W.
 Soil 2nd rate.
 Good Yellow Pine spruce fir and Oak timber.
 Some buckbrush and Chaparral.

July 11th, 1882.

From corner to Secs. 2, 3, 10 and 11.
 I run West on a true line between Secs. 3 and 10.
 Variation 14° 45' East.

- Descend.
- 3.50 Ravine course N. 20° E. and ascend.
 11.50 Spur slopes N.
 16.80 Head of ravine course N. 10° E.
 23.00 Spur slopes N.
 30.00 Main divide between San Gabriel River and Swearthout Canon
 bears S. 65° E. and along same.
 38.00 S. over main divide bears N. 60° W. and descend gradual.
 40.00 Set granite stone 24 x 9 x 6 ins. 15 ins. deep in ground for
 $\frac{1}{4}$ sec. cor. marked $\frac{1}{4}$ S. on W. face, raised mound of stone
 alongside from which bears.
 A Yellow Pine 24 ins. dia. N. 67° W. 168 links dist.
 marked $\frac{1}{4}$ S. B. T.
- 50.00 Descend steep over loose rocks.
 67.00 Ravine course S.W. and ascend.
 72.00 Spur slopes S. 10° W.
 80.00 Set a granite stone 28 x 12 x 10 ins. 18 ins. deep in
 ground for cor. to Secs. 3, 4, 9 and 10, marked with 3 notches
 on E. and 5 notches on S. edges from which bears
 A Yellow Pine 48 ins. dia. N. 61° W. 43 links dist.
 Marked T. 3 N., R. 8 W., S. 4 B. T.
 A Yellow Pine 10 ins. dia. S. 59 $\frac{1}{2}$ ° W. 43 links dist.
 Marked T. 3 N., R. 8 W., S. 9 B. T.
 A Yellow Pine 8 ins. dia. N. 18° E. 80 links dist.
 Marked T. 3 N., R. 8 W., S. 3 B. T.
 A Yellow Pine 36 ins. dia. S. 67 $\frac{1}{4}$ ° E. 75 lks. dist.
 Marked T. 3 N., R. 8 W., S. 10 B. T.
 Bald peak bears S. 76 $\frac{1}{4}$ ° W.
 Land summit and high mountain. Soil 2nd and 3rd rate.
 Yellow pine fir and spruce timber. Chaparral, manzanita
 and buckrush.

T. 3 N., R. 8 W., S. E. M.

From cor. to Secs. 3, 4, 9 and 10.

I run—

South on a true line bet. Secs. 9 and 10.

Variation 15° E.

Ascend abrupt along ravine.

32.00
40.00

Leave ravine runs S. 10° E.

Set a granite stone 15 x 10 x 9 ins. 10 ins. deep in ground for $\frac{1}{4}$ Section cor. marked $\frac{1}{4}$ on W. face raised mound of stone 2 feet high 4 feet dia. at base, alongside pits impracticable.

In advance, land steep and abrupt.

Descent towards San Gabriel River unfit for cultivation and discontinue survey of land.

From cor. to Secs. 3, 4, 9 and 10, I run

North on a random line bet. Secs. 3 and 4.

Variation 15° E.

Ascend very steep.

24.00
25.50
28.50

Top of steep ascent and ascend gradual.

Bald peak bears S. 72° W.

Main divide between San Gabriel River and Waters running into Rock Creek bears E. and W. and descend.

33.50
38.00
39.25
40.00
46.50
57.00
68.00
71.00
79.89

Head of ravine course N.E.

Spur slopes N. 70° E.

Ravine course E.

Set temporary $\frac{1}{4}$ sec. cor.

Spur N.E. and descend steep.

Ravine course N.E. and ascend.

Flat spur slopes N. 45° E.

Descend abruptly.

Intersect N. boundary 29 lks. E. of cor. to Secs. 3, 4, 33 and 34.

Thence,

S. 0° 12' E. on a true line bet. Secs. 3 and 4.

Variation 15° 15' E.

39.89

Set a granite stone 26 x 7 x 6 ins. 15 ins. deep in ground for $\frac{1}{4}$ sec. cor. marked $\frac{1}{4}$ on W. face from which bears

A Yellow Pine 60 ins. dia. S. 88° W. 12 links dist. marked $\frac{1}{4}$ S. E. T.

A Yellow Pine 8 ins. dia. S. 42 $\frac{1}{2}$ ° E. 34 links dist. marked $\frac{1}{4}$ S. E. T.

79.89

To cor. of Secs. 3, 4, 9 and 10.

Land steep and abrupt broken mountains.

Soil 2nd and 3rd rate.

Yellow Pine, Fir and Spruce timber, heavy undergrowth of chaparral and buckbrush.

July 12th, 1882.

The remainder of this township is very broken and precipitous mountains. Unfit for cultivation and without timber of any value.

General Description.

The surveyed part of this township is high, rough, mountain and valuable only for its timber which consists of yellow and pitch pine, fir, spruce, Cedar and Oak. The timber is confined to the highest part of the mountains.