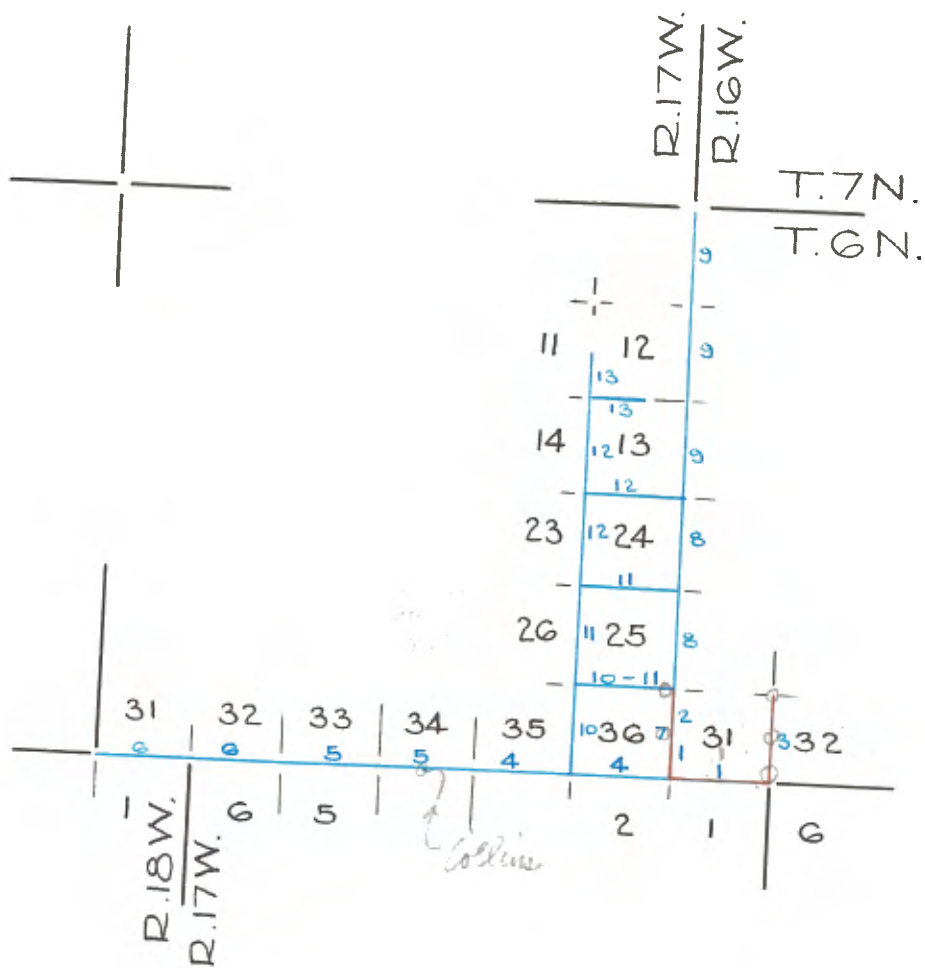


10-1-1880

Copied from Photographic Copies
furnished by
U.S. General Land Office
Washington D.C.



Blue lines run by W. H. Norway - 1879-1880
No record of who ran Vermilion lines

Surveyed by Page 9 1879-1880

CHAINS

RESURVEY OF THE SOUTH BDY.
OF
SEC. 31, T. 6 N., R. 16 W.,

S. 89° 55' E., on true line on the S. bdy. of Sec. 31, continuing measurement.
A point 40.00 chs., in departure from the SE. cor. of Sec. 31
Set an iron post 3 ft. long, 1 in. diam., 27 ins. in the ground,
for standard & sec. cor. for Sec. 31, with brass cap marked

39.56

S 0
+ S 31

1922

raise a mound of stone, 3 ft. base, 2 ft. high, N. of cor.,

46.10

Forester's trail, bears NE and SW

stream, 15 lks wide, 10 ins. deep, course S.

49.50

Asc. N. W. slope 27 1/2 ft.

65.00

East fork of same stream, 10 lks. wide, 4 ins. deep, course N. 85° W.

69.75

Same stream, course SW.

79.56

A point determined by single proportion between the original &

sec. cor. for Sec. 31 and the original witness cor., for Secs. 33 and

34 (1.49 chs. E and 6 lks S of temp. cor.). At which point set an iron

post 3 ft. long, 3 ins. diam., 27 ins. in the ground, for the standard

cor. of Secs. 31 and 32, T. 6 N., R. 16 W., and the closing cor.,

of T. 5 N., R. 16 and 17 W., with brass cap marked

S 0
T 6 N R 16 W
S 31 S 32
S 18 0

R 17 W R 16 W
T 5 N
1922.

raise a mound of stone 3 ft. base, 2 ft. high, N. of cor.,

land rolling mountains.

Soil, loam and rocky, let rate.

Timber, scattered sycamore and cottonwood.

Undergrowth, dogwood, manzanita, greasewood, sage, clover.

Retraacement of a portion of the S. bdy. of T. 6 N., R. 17 W.

from the cor. of T. 6 N., R. 16 and 17 W., and the cor. of Secs. 1 and

2, T. 5 N., R. 17 W., heretofore described.

39.63

North on random line bet. Secs. 31 and 36,

fall 1 lks. W. of the original & sec. cor.

40.95

North on a random line

fall 3 lks. E. of the cor. of Secs. 25, 30, 31 and 36, set in Dec. 1915,

by Wm. H. Friedhoff, Mineral Examiner, Forest Service, in connection

with the survey of H. E. S. No. 167, which is a sandstone ledge 6 ins.

firmly set, rising 6 ins. above ground, and marked 5 grooves on the

N., and 1 groove on the S. faces. As this cor. now becomes common

to Secs. 25 and 36, R. 17 W., only in place of which cor. I set an

iron post, 3 ft. long 2 ins. diam., 27 ins. in the ground, for the

cor. of Secs. 25 and 36 only with brass cap marked

T 6 N
R 17 W T 6 N
S 25 R 16 W
S 36 S 30
1922

RETRACEMENT OF A PORTION OF THE E. END OF
T. 6 N. R. 17 E.

Take a mound of stone 3 ft. base, 2 ft. high W. of cor.

From the cor. of T. 6 N. R. 16 & 17 W., and the cor. of
secs. 1 and 2, T. 5 N., R. 17 W., hereafter described.

N. 0-01 E., on true line bet. secs. 31 and 36.
Over broken land, then scattered underground.

Gate, course W., sec. 121 ft.

Spur, slope W., base 252 ft.

Also fence, bears E. and W. and N.

Along E. side of fence.

Cor. No. 13-N.E.S.-167, which is a sandstone 6 x 6 ins.

above ground, marked 12-NE-167 on NE face and with a

mound of stone 3 ft. base 2 ft. high NE of cor.

Cor. No. 12-N.E.S.-167, which is a sandstone, 6 x 6 ins.

above ground, marked 12-NE-167 on N. face, with pits S.

and NE, and a mound of stone, 3 ft. base 2 ft. high E. of cor.

Gate, course SW.

Cor. No. 2, H.E.S. 167, which is a sandstone 6 x 10 x 5 ins.

above ground, firmly set, marked 2-NE-167 on NE face

with pits N. and NE. and mound of stone 3 ft. base, 2 ft.

high N E of cor.

Fence, bears E and W.

Gate, course S.W.

Intersect 1/4 sec. of sec. 31 and 36, which is a

sandstone, 16 x 10 x 8 ins. firmly set in the center of old

mound of stone and marked 1/4 on W. face, 1-NE-167 on the

E. face.

This cor. was set in Dec. 1915 by Mr. H. Friedrich, in

connection with the survey of NE 167.

As this cor. now refers to sec. 36 only, T. 6 N., R. 17 W.,

in place of the stone cor. which I deposited alongside, I set

and from post 3 ft. long, 1 in. diam, 27 ins. in the

ground, for 1/4 sec. cor. for sec. 36 only, and cor. No. 1 of

H.E.S. No. 167, with three cap marked

1922
S 36 167
NE 8

Take a mound of stone 3 ft. base 2 ft. high W. of cor.

These from cor.

N. 0-01 E., on true line bet. secs. 31 and 36, (N 7).

Enter open field.

Leave open field.

Intersect cor. No. 11-N.E.S. 167, which is a stone 6 x 10 x 6

ins. above ground firmly set, marked 11-NE-167 on the SE,

face and 0 on the W. face, witnessed by a mound of stone SE.

Gate, course S.W., across 15 ins. wide 8 ins. deep.

Age. S. slope 253 ft.

The cor. of sec. 25 and 36 T. 6 N., R. 17 W., hereafter

described.

Land, broken and rolling.

Soil, granite loam, 1st and 2nd. rate.

Timber, cottonwood and oak.

Undergrowth, chinquapin, sage, oak and grasses.

40.95
30.20
20.18
14.50
7.00

59.63
56.00
50.40
15.15
15.00
14.59
12.89
12.86
6.00
2.50

SUBDIVISIONAL SURVEYS IN T. 6 N., R. 16 W.

From the standard cor. of sec. 31 and 32, T. 6 N., R. 16 W. and the closing cor. of T. 5 N., R. 16 & 17 W., bearings are described.

North on true line bet. sec. 31 and 32.

Over mountainous land, then scattered timber and undergrowth. desc. 29 ft. slope 29 ft. containing small flow of water.

2.50

Age. S. slope 100 ft. spur, slope 100 ft. trail along top of same, desc. 36 ft.

10.00

Age. S. slope 24 ft. spur, slope S. W. Desc 34 ft.

25.10

Age. S. slope 24 ft. spur, slope S. W. Desc 34 ft.

24.80

Age. S. slope 15 ft. spur, slope S. W. Desc 15 ft.

38.00

Ground, for 1/4 sec. cor. for sec. 31 only with brass cap set in iron post, 3 ft. long, 1 in. diam. 27 ins. in the

40.00

8 31

1922.

Rate a mound of stone, 3 ft. base, 2 ft. high, W. of cor. spur, slope S. W. Desc 294 ft.

41.65

Age. S. slope 5. W. spur, slope S. W.

46.90

Age. S. slope 42 ft. spur, slope S. W. Desc 42 ft.

52.70

Age. S. slope 71 ft. spur, slope S. W. Desc 71 ft.

68.40

Age. S. slope 113 ft. spur, slope S. W. Desc 113 ft.

70.00

Age. S. slope 65 ft. spur, slope S. W. Desc 65 ft. stream 10 ins. wide, 6 ins. deep.

75.40

Ground, for the M. E. cor. of sec. 31 only with brass cap set in iron post, 3 ft. long, 2 ins. diam. 27 ins. in the

80.00

8 31
7 6
6 5
5 4
4 3
3 2
2 1
1 0

Rate a mound of stone, 2 ft. base 1 1/2 ft. high W. of cor. land broken and rolling mountains. Soil, rocky and gravelly, granite formation, and rate.

PRELIMINARY OATH OF ASSISTANTS.

We, Henry R. Henderson, and John O. Kiewit, do solemnly swear that we will faithfully execute the duties of Chainmen and Chainmen that we will leave the chain upon uneven ground, and place the tally pins, whether by striking or dropping the same; that we will report the true distance to all notable objects, and the true length of all lines; that we will assist in measuring to the best of our skill and ability. Henry R. Henderson, John O. Kiewit.

Subscribed and sworn to before me

W. H. Norway,

this 14th day of November 1879

County of the U. S. District Court for Cal.

PRELIMINARY OATH OF ASSISTANTS.

I, W. L. Hopkins, do solemnly swear that I will well and truly perform the duties of assessor & mound builder according to instructions given me, and to the best of my skill and ability.

W. L. Hopkins,

Subscribed and sworn to before me, this 14th day of November, 1879.

W. H. Hoxway,

Comy. for the U. S. Circuit Court for Cal.

1ST STANDARD NORTH ALONG SOUTH N. 1 6 N. R. 17 W. S. B. N.

From the corner to sps. 6 N. Rgs, 16 & 17 W. I run West on South Boundary of sec. 36.

Var. 14251 E.

Descend. Enter Valley of Canada, Gaiter's sps. N.W. & S. E. Cross Road, sps. N. W. and S. E.

Cross dry wash in Canada, 100 lks. wide, sps. S. E. Leave valley, sps. N. W. and S. E. As the point for

1/4 sec. cor. will all on steep side hill, not a suitable place to build rd. I have set post 4 in. dia. 1

ft. in earth. 1 ft. above stone md. 4 ft. in dia. at base, by 2 ft. in height for witness to standard 1/4

sec. cor., from which sps. one of three symmetrical 12 in. dia. S. 42 E. 32 lks. dist., also an rider

to measure this amount I return to a point 16.85 sps. West of corner to sps. 6 N. Rgs. 16 & 17 W. on South

Boundary of sec. 36, and run a base line North 9.50 sps. Leave a flag and proceed to the summit of a spur,

which my flag left at the end of the 9.50 sps. base sps. N. 100° E. This would make by calculation 45.01 sps.

to the line, to which add the distance to the base 16.85 sps., would give a distance of 61.96 sps to the

flag W. of cor. to sps. 6 N. Rgs. 16 and 17 W. Set post 4 in. sq. 1 ft. in earth, 1 ft. above stone md.

4 1/2 ft. in dia. at base by 2 ft. in height for stand. cor to sec. 35 & 36.

Land mountainous, except in valley. Soil light and second rate.

Timber and undergrowth of Live Oak and Choptanal.

80.00

10.00
14.00
23.00
30.51

26.00
25.00
40.00

West on S. Bdy. of sec. 35. Var. 14251 E.

Descend. Leave HAYNES, THOMAS & GAMBLE, and ascend

Leave HAYNES, sps. N. W. and Ascend. Set post 4 in. dia. 1 ft. in earth 1 ft. above stone md. 4 ft. in dia. at base, by 2 ft. in height for standard

Run by George S. Collins - 1879

November 17th, 1879.

Ascend.
 Summit of Spur, Drs. N. W. and S. R. Descend.
 Set stone 16 x 12 x 10 in. Stone md. 4 ft. in dia. at base,
 by 2 ft. in height for Stand 1/4 sec. cor.
 Cross Gulch, near its head, 10 lks. wide, Drs. S. R. and ascend.
 41.25
 Summit of High Ridge, Drs. N. W. & S. R. ascend.
 Set stone 20 x 16 x 12 in Stone md. 4 1/2 ft. in dia. at base,
 by 2 ft. in height for Stand. cor to sees. 32 and 33.
 Land mountainous.
 Soil 2nd. rate.
 Timber and undergrowth of Live Oak and Chaparral.

West on South Boundary of sec. 33. Var. 1425, E.

Descend.
 Cross ravine 20 lks. wide, Drs. S. R. and ascend.
 8.50
 Top of Spur, Drs. N. W. and S. R. ascend.
 15.00
 Cross Ravine 20 lks wide, Drs. S. R. & ascend.
 38.50
 40.00
 The point for 1/4 sec. cor. falling on steep side hill,
 a place not suitable to build md. I continue and at
 On top of Ridge, bearing N. W. and S. R. Set post 4 in.
 dia. 1 ft. in earth, 1 ft. above stone md. 4 ft. in dia.
 at base by 2 ft. in height, for witness to Stand. 1/4
 sec. cor. and descend.
 51.00
 Cross Gulch, 20 lks. wide, Drs. S. R. and ascend.
 76.75
 Set post 4 in. sq. 1 ft. in earth, 1 ft. above stone
 md. 4 1/2 ft. in dia. at base by 2 ft. in height, for Stand.
 cor to sees. 33 & 34.

West on South Boundary of sec. 34. Var. 1425, E.

1/4 sec. cor.
 Top of Ridge Drs. N. W. and S. R. descend.
 57.50
 A small Lake, Drs. S. about 3000 lbs. dist.
 Set post 4 in. sq. 1 ft. in earth, 1 ft. above earth
 md. 4 1/2 ft. in dia. at base by 2 ft. in height & dug pits
 24 x 16 x 12, 8 lks dist. at 4 angles, for Stand. cor. to
 sees. 34 and 35.
 Land mountainous.
 Soil 2nd. rate.
 Timber and undergrowth of Oak and Chaparral.

STAND. N. ALONG S. B. T 6 N. R. 17 W. S. B. N.

Run by George S. Collins
1879

Timber and undergrowth of Live Oak & Chaparral.

Land mountainous.
Soil 2nd. rate.

Ascend.
Set stone 16 x 12 x 6 in stone md. 4 ft. in dia. at base,
by 2 ft. in height, for stand. 1/4 sec. cor.
Summit of High Ridge Drs. N. E. & S. W. descend.
Set post 4 in. sq. 1 ft. in earth, 1 ft. stone md.
4 1/2 ft. in dia. at base, by 2 ft. in height for stand.
cor. to top. 6 x. No. 17 & 18 W.

40.00
62.50
80.00

West on South Boundary of sec. 31.
Var. 14251 E.

Timber & undergrowth of Live Oak & Chaparral.

Land mountainous.
Soil 2nd. rate.

Descend.
Enter Canada, thence down same.
Cross gulch, called Canada KI Diablo, 75 lks. wide, grv. S. W.
Leave Canada, Drs. S. W.
Set post 4 in. dia. 1 ft. in earth 1 ft. above stone md.
4 ft. in dia. at base, by 2 ft. in height for stand. 1/4
sec. cor.
Cross gulch 50 lks. wide, grv. S. E. ascend.
Set stone 20 x 14 x 10 in stone md. 4 1/2 ft. in dia. at
base by 2 ft. in height, for stand. cor. to sec. 31 and 32.

21.00
32.75
35.00
40.00
44.50
60.00

West, on South Boundary of sec. 32.
Var. 14251 E.

STAND N. ALONG S. B. 7 & N. 17 W. S. B. N. N.

PRELIMINARY OATH OF ASSISTANTS.

We, Joseph De Fields and Henry L. Kowaly, do solemnly swear that we will faithfully execute the duties of Chain Carriers; that we will level the chain upon uneven ground, and give the tally pins, whether by striking or dropping the same; that we will report the true distance to all notable objects, and the true length of all lines; that we will assist in measuring to the best of our skill and ability.

Joseph De Fields

Henry L. Kowaly.

Subscribed and sworn to before me, this 13th day of April, 1880.

Mr. H. Kowaly,
Comm. for U. S. Circuit Court for Cal.

I, K. J. Tobin, do solemnly swear that I will well and truly perform the duties of Assessor, according to the instructions given me, and to the best of my skill and ability.

K. J. Tobin.

Subscribed and sworn to before me, this 13th day of April, 1880.

Mr. H. Kowaly,

Comm. for U. S. Circuit Court for California.

E. B. T. G. N. H. 17 W. S. B. K.

From the standard corner to Township 6 North, Range 16 & 17 West, I run North on true line between said Ranges on East Boundary of Section 36.

Variation 1/4 25' East.

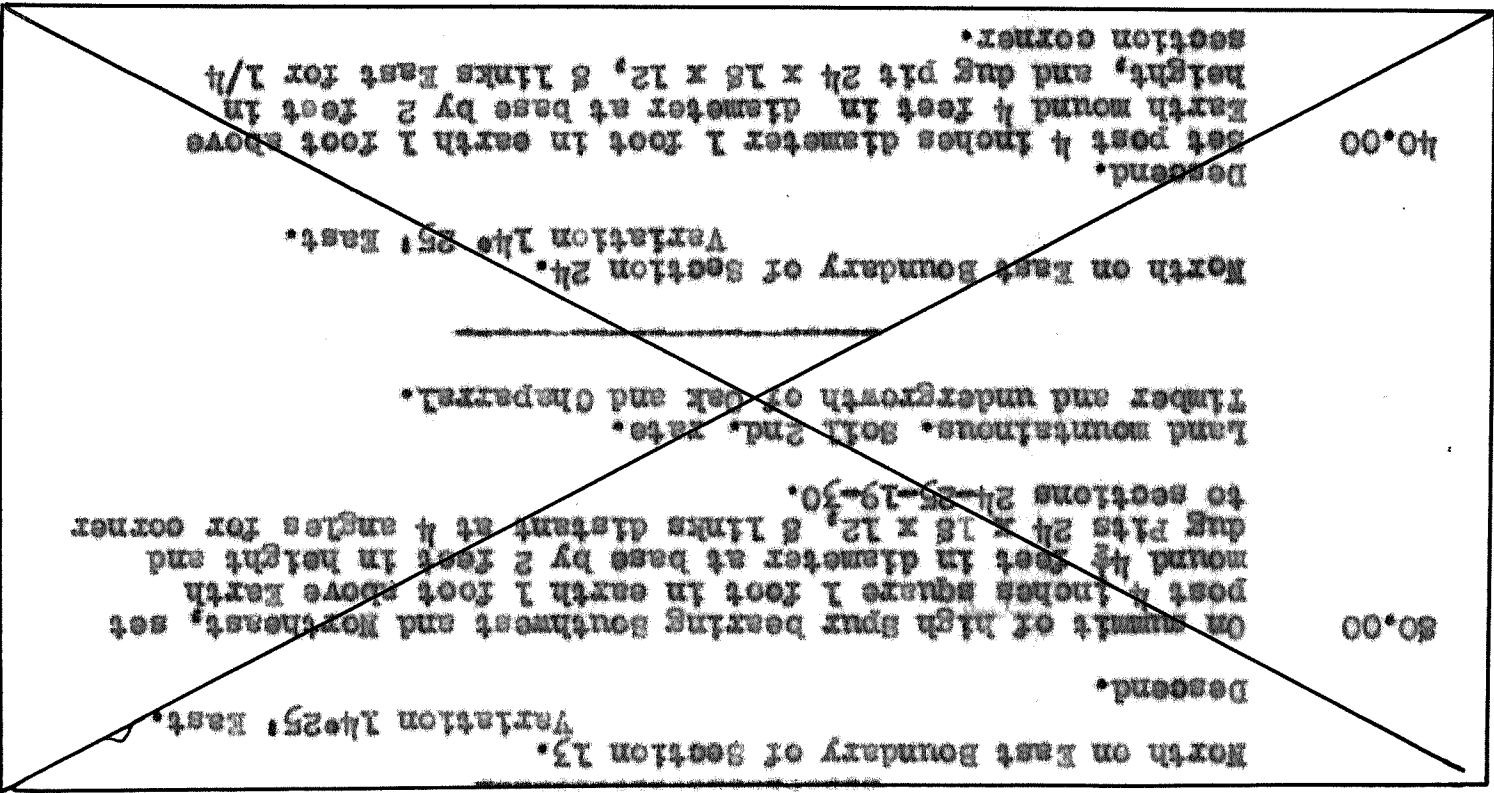
Along East side of Canada Castagne.
Set post 4 inches diameter 1 foot in earth, 1 foot above earth mound, 4 feet in diameter at base, by 2 feet in height, and dug pit 24 x 18 x 12, 8 links East for 1/4 section corner.

40.00

64.50
80.00

Cross on top 25 links wide, course Southeast and ascend. Set post 4 inches square 1 foot in earth 1 foot above earth mound 4 feet in diameter at base, by 2 feet in height, and dug pit 24 x 18 x 12, 8 links distant at 4 angles for corner to sections 30-31-25-36.

Land monuments. Soil 2nd. Rate.
Timber and undergrowth of Oak and Choptail.



North on East Boundary of Section 25.
 Variation 1425: East.
 Ascend.
 Summit of Spur bears Northeast and Southwest, and descend.
 11.00
 35.00
 38.75
 40.00
 Cross Gulch 20 links wide, course Southwest.
 Set post 4 inches diameter 1 foot in earth, 1 foot above
 stone mound 4 feet in diameter at base by 2 feet in height
 for 1/4 section corner.
 Leave Canada bears Southwest and Northeast and ascend.
 41.50
 60.00
 On summit of high spur bearing Southwest and Northeast,
 set post 4 inches square 1 foot in earth 1 foot above earth
 mound 4 1/2 feet in diameter at base by 2 feet in height and
 dug pits 24 x 12, 8 links distant, at 4 angles for
 corner to sections 24-25-19-30.
 Land mountains. Soil 2nd. rate.
 Timber and undergrowth of oak and Choptaw.
 North on East Boundary of Section 24.
 Variation 1425: East.
 Descend.
 40.00
 Set post 4 inches diameter 1 foot in earth 1 foot above
 earth mound 4 feet in diameter at base by 2 feet in height,
 and dug pit 24 x 12, 8 links East for 1/4 section
 corner.
 Cross near head of Gulch 10 links wide, course Southwest and
 ascend.
 56.50
 Summit of Spur bears Southwest and Northeast and descend.
 62.00
 Set stone 16 x 12 x 10 in stone mound 4 feet in diameter
 at base by 2 feet in height for corner to sections 18-19
 13-24.
 Land mountains. Soil 1st and 2nd rate.
 Timber and undergrowth of oak and Choptaw.
 North on East Boundary of Section 13.
 Variation 1425: East.
 Descend.
 40.00
 On summit of high spur bearing Southwest and Northeast, set
 post 4 inches square 1 foot in earth 1 foot above earth
 mound 4 1/2 feet in diameter at base by 2 feet in height and
 dug pits 24 x 12, 8 links distant at 4 angles for corner
 to sections 24-25-19-30.
 Land mountains. Soil 2nd. rate.
 Timber and undergrowth of oak and Choptaw.
 North on East Boundary of Section 24.
 Variation 1425: East.
 Descend.
 40.00
 Set post 4 inches diameter 1 foot in earth 1 foot above
 earth mound 4 feet in diameter at base by 2 feet in height,
 and dug pit 24 x 12, 8 links East for 1/4 section
 corner.
 Cross near head of Gulch 10 links wide, course Southwest and
 ascend.
 56.50
 Summit of Spur bears Southwest and Northeast and descend.
 62.00
 Set stone 16 x 12 x 10 in stone mound 4 feet in diameter
 at base by 2 feet in height for corner to sections 18-19
 13-24.

E. B. F. 6 N. 17 W., B. B. N.

April 13th, 1880.

Land mountainous. Soil 2nd. rate. Timber and undergrowth of oak and chestnut.

North, ranges 17 & 18 west.

Set stone 18 x 12 in stone mound 1/2 foot in diameter at base, by 2 feet in height for corner to Township 6 and 7

56.00
57.50
60.00

Top of ridge, bears Northeast and Southwest.

29 lbs. dist.

Set stone 20 x 16 x 10, 15 inches in earth for 1/4 section corner from which bears a stone 10 x 10 x 10 N. 169° E. A high sand rock and on line.

20.00
40.00

Ascend.

North on East Boundary of Section 1. Variation 112° 25' East.

Land mountainous. Soil 2nd. rate. Timber and undergrowth of oak and chestnut.

Set stone 20 x 12 x 10 in stone mound 1/2 foot in diameter at base, by 2 feet in height for corner to sections 7-6-7-12.

48.25
60.00

Course South and ascend.

Set stone 4 inches diameter 1 foot in earth 1 foot above

46.50

North and at

The point for 1/4 section corner falling on steep side hill, a place not suitable to build mound 1 containing.

40.00

Descend.

North on East Boundary of Section 12. Variation 142° 25' East.

Land mountainous. Soil 2nd. rate. Timber and undergrowth of oak and chestnut.

Set stone 4 inches square 1 foot in earth 1 foot above stone mound 1/2 foot in diameter at base by 2 feet in height for corner to sections 12-13-7-18.

60.00
72.00
75.00

Top of spur bears, Northeast and Southwest.

Set stone 4 inches diameter 1 foot in earth 1 foot above stone mound 1/2 foot in diameter at base by 2 feet in height for 1/4 section corner.

6.75
40.00

Course South and ascend.

Descend.

North on East Boundary of Section 13. Variation 142° 25' East.

Land mountainous. Soil 1st and 2nd. rate. Timber undergrowth of oak and chestnut.

Set stone 16 x 12 in stone mound 1/2 foot in diameter at base by 2 feet in height for corner to sections 18-

62.00
80.00

Summit of spur bears Southwest and Northeast and descend.

and ascend.

56.50

E. B. T. 6 N., N. 17 W., S. B. N.