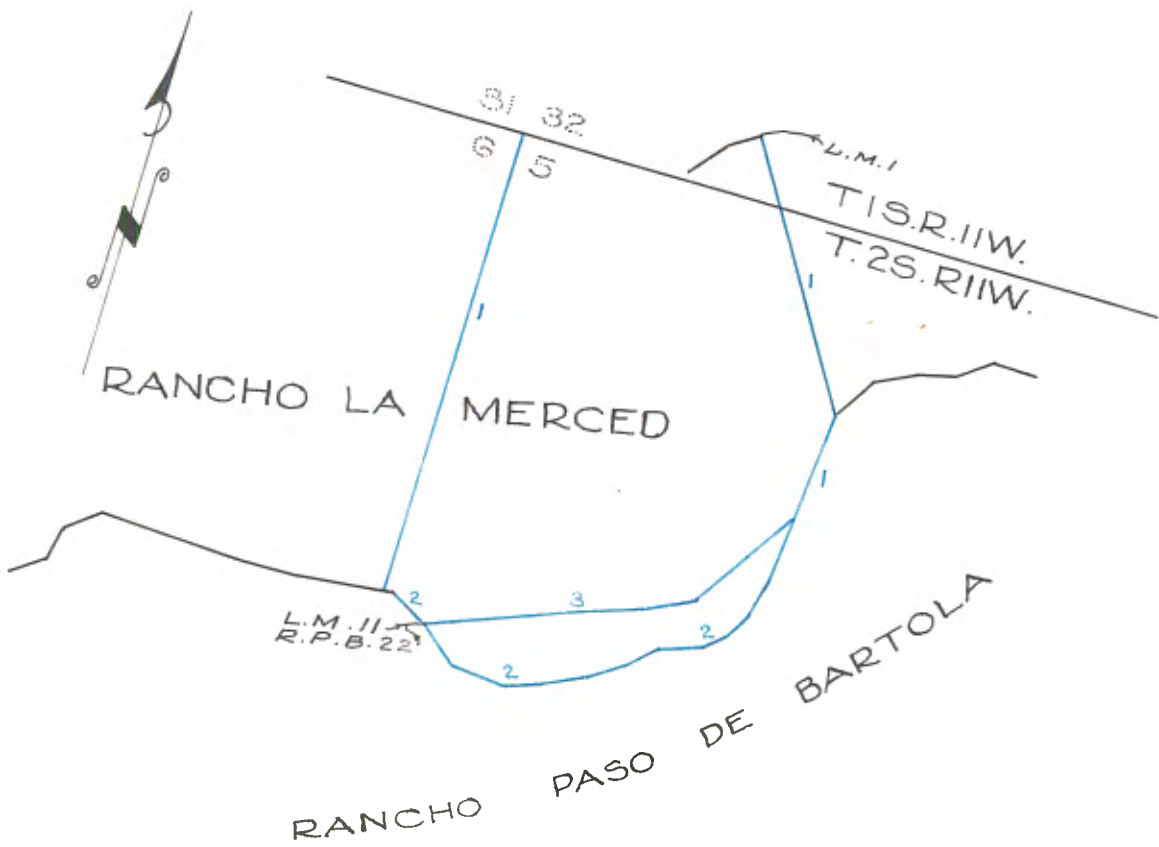


Copied from Photographic Copies
furnished by
U. S. General Land Office,
Washington, D.C.



Blue lines run by L. Seebold-1877

FIELD NOTES OF A PIECE OF
LAND BETWEEN THE SOUTH LINE
of the
RANCHO LA MERCED
and the north line of the
RANCHO PASO de BARTOLO,

situate in the County of Los Angeles, State of
California, being in part of

SECTION 5, TOWNSHIP 2 SOUTH, RANGE 11 WEST, SAN
BERNARDINO MERIDIAN.

Survey commenced May 15th, 1877; completed May 19th, 1877, by

L. SEEBOLD,
Deputy U.S. Surveyor.

In comparing the maps and courses of the Ranchos "La Merced" and "Paso de Bartolo", I find that there is a piece of vacant land between the lines of said ranches, that is bounded on the North by the Exterior Boundary line of the Rancho "La Merced" from Station 3 to Station 11, and on the South by the Boundary line of the Rancho "Paso de Bartolo" from Station 10 to Station 22, Therefore Station 3 of the Merced and Station 10 of the Paso de Bartolo must be one and the same point, and also Station 11 of the Merced and Station 22 of the Paso de Bartolo must fall together. A tabling of the respective lines shows an error of 00.58 chs. in the northing and southing and 0.06 chs. in easting and westing, which is not large in such a distance. I, therefore, go to Station 1, of Merced Rancho on the North bank of a small creek running westerly through a cultivated field, and run true courses.

VARIATION OF MAG. NEEDLE
14° 30' EAST.

From Station 1 of Merced Rancho, I run,
South 29° E on true line,
Var. 14° 30' E.

22.00 Into Country Road.
35.00 To 1st bank of river bottom
39.50 To 2nd bank into water of San Gabriel River
45.00 To station 2 of Merced Rancho.
Thence, along the river San Gabriel,
South 5 3/4° W.
14.50 To Station 3 of Merced Rancho and Station 10 of Paso de Bartolo
Reho, close to a dam, the head of a large ditch running along the
bank in a southerly direction where I set a large post marked
RM. 3 and R.P.B. 10

From thence I go to the Corner of Secs 31, 32, on

Township line bet. Twps. 1 and 2 South, Range 11 West.
San Bernardino Meridian, and run,
South, on a true line
Var. 14° 30' E.

2.00 A board fence,
4.50 A creek, which empties into the Rio Honda
20.25 Board fence on north line of country road
21.00 South line of said county road.
26.10 Board fence
43.20 Board fence
57.00 Bank of swampy bottom.

SECTION 5, TOWNSHIP 2 SOUTH, RANGE 11 WEST,
SAN BERNARDINO MERIDIAN.

- 65.75 To a point from which Station 12 of Rancho Merced bears N. 84° E 2.00
chs. dist.
Thence, I run, from said Station 12
S. 59½° E. on a true line,
Var. 14° 30' E.
- 6.00 To Station 11, Set a large post, marked R.M. 11 and R.P.B. 22 in swampy
land.
Thence, along the Rancho Paso de Bartolo, from Station 22, I run,
South 55° E. on true line,
Var. 14° 30' E.
- 3.00 Through wet bottom land, set post R.P.B. 21,
thence,
S. 17° E.
- 3.50 Set post R.P.B. 20,
thence,
S. 46° E.
- 0.20 A large ditch 25 lks. wide, into dense willows.
5.00 Sandy wash
6.25 Bank
8.00 Set post R.P.B. 19
thence
North 89½° E
- 5.00 Set post R.P.B. 18,
thence -
N. 67¼° E.
- 0.40 Enter bottom of scattering willows.
5.00 Swamp
9.00 Set post marked R.P.B. 17,
thence,
N. 50½° E.
- 9.00 Set post R.P.B. 16,
thence,
N. 22 ¾° E.
- 2.50 Bank.
5.00 Set post R.P.B. 15, Temple's board fence bears North 25 lks. distant,
Thence,
N. 57¾° E.
- 6.00 Set post R.P.B. 14,
thence,
N. 69¼° E.
- 2.50 Enter bottom
4.50 Set witness post to Station 13,
5.00 Into River San Gabriel,
thence,
N. 47° E.
- 5.25 To east bank of River
6.00 Set post marked R.P.B. 12,
thence,
N. 12° E.
- 0.75 Into River.
5.00 Set post, R.P.B. 11,
thence,
N. 6¼° W.
- 9.00 To a point from which the stake R.M. 3 and R.P.B. 10, bears N. 20° W.
0.34 chs. distant,
I now go back to the post R.M. 11 or R.P.B. 22 and run along the
exterior boundary line of the Rancho Merced North 73° E. through
swampy bottom
- 7.00 Set post R.M. 10,

SECTION 5, TOWNSHIP 2 SOUTH, RANGE 11 WEST,
SAN BERNARDINO MERIDIAN.

. thence,
 N.69 $\frac{1}{2}$ ° E.
 0.25 A creek
 2.00 A creek
 2.60 A Board fence.
 3.20 Out of creek
 7.20 Low bank.
 8.00 Set post R.M.9
 thence,
 N.66 $\frac{3}{4}$ ° E.
 8.00 Set post, R.M. 8
 thence,
 North 68 $\frac{3}{4}$ ° E.
 7.00 Set post R.M.7,
 thence
 N.70° E.
 8.00 Set stake R.M. 6,
 thence
 N.59 $\frac{1}{4}$ ° E.
 3.00 Set post R.M. 5,
 thence
 N.35° E.
 8.00 Set post, R.M.4,
 thence
 N.28 $\frac{3}{4}$ ° E.
 5.88 Post marked R.M.3. R.P.B.10,

(The real distance ought to be 6.08 chs.)