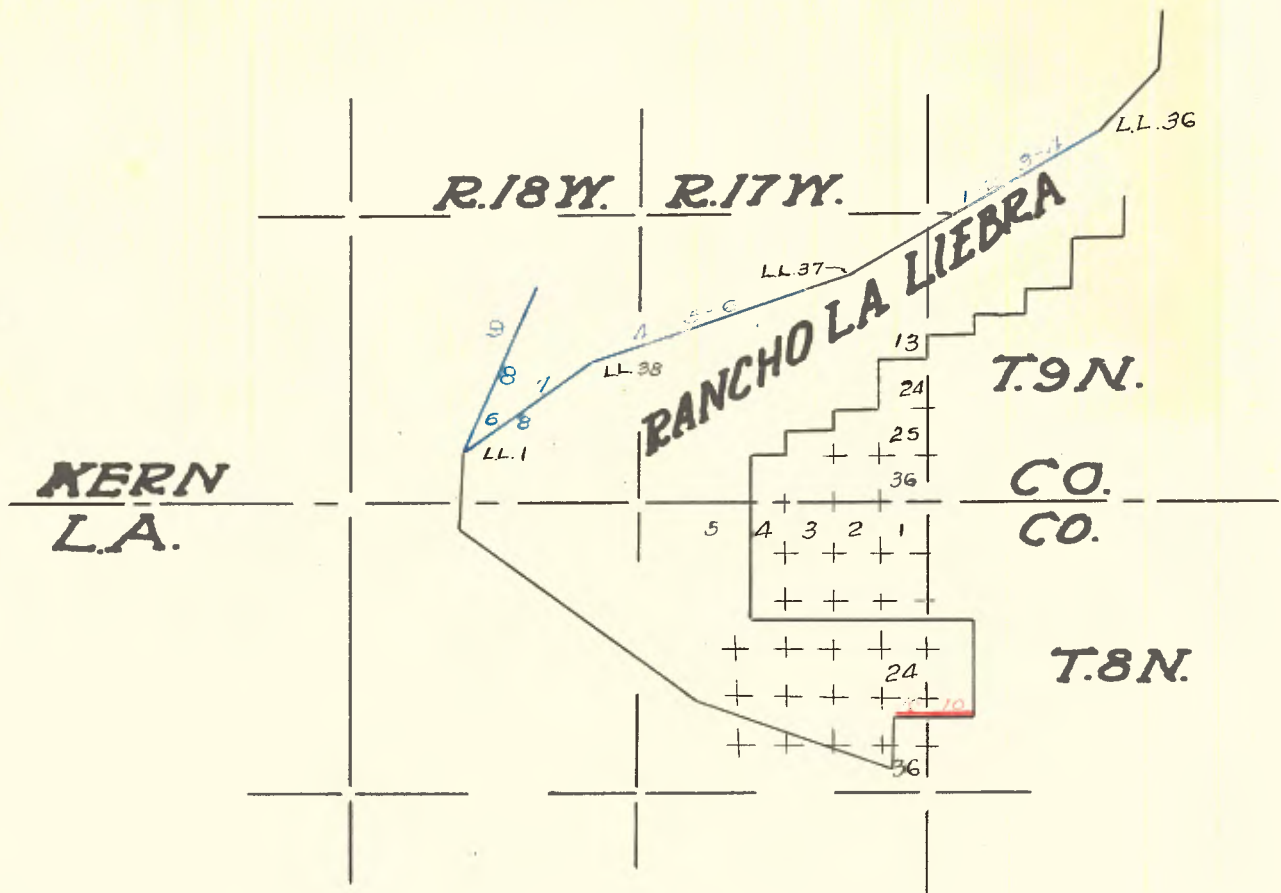


Copied from Photographic Copies
furnished by
U. S. General Land Office,
Washington, D. C.



*No information in notes as to who ran blue lines.
Red line run by G.Y. Pearson - 1901*

EXTERIOR LINES AND RESURVEY OF
BOUNDARIES OF
RANCHOS
LA LIEBRE and LOS ALAMOS.

For Preliminary oaths of certain Assistants, see Field Notes of
T. 12 N., R. 15 W., S. B. M.

Survey commenced Aug. 30, 1893, with a light mountain transit
with solar attachment made by John Roach, San Francisco.

At a point in Lecheria Canyon near the corner to Secs. 2, 3, 10,
and 11 in T. 9 N., R. 17 W., S. B. M. I observe Polaris at its
eastern elongation Aug. 29, 1893, and find its magnetic bearing
to be

N. 13° 24' W. Lat. 34° 52' N.
Long. 118° 39' W.

Time of observation, 8 hrs. 45 mins. P. M.

Bearing 13° 24'
Azimuth 1° 32'
Variation 14° 56' East.

CHAINS

After diligent search in Pescado Canyon and the adjoining gulches,
I am unable to find any standing black oak tree or any traces of
a fallen one. In the centre of said canyon, however, and near
its head, I find a cluster of small trees of a variety of Live Oak
which resembles the Black Oak. On the ground here is lying the
decayed trunk of a tree some 8 or 9 inches diameter which I be-
lieve is the one which was marked L. L. No. 37, at end of course
No. 36, of the survey of the Rancho La Liebre, but it is so far
decayed that I cannot distinguish any marks.
Therefore, at the point where this tree trunk is lying I mark a
Live Oak, 8 ins. diam. L. L. No. 37 on side facing the grant for the
reestablished corner to said Rancho, from which,
A Manzanita 10 ins. diam. bears N. 46° W. 27 lks. dist.
A live oak, 6 ins. diam. bears N. 14° E. 50 lks. dist. both marked L.L.
No. 37, B. T.

Thence, I run,
N. 62½° E. on a random line along the boundary of Rancho La Liebre,
Var. 14° 55' E.

476.12

The pine tree 30 ins. diam. L.L. No. 36, bears N. 28° 50' W. 18 chs. dist.
This tree is near the Upper end of the meadows called the Hay Camp
or Sacateros. I blaze this tree and mark it on the wood L. L. No.
36 from which

A Pine 10 ins. diam. S. 43 ¾° E. 62 lks. dist.
thence, I run,

S. 60° 5' W. on a true line along the boundary of Rancho La Liebre,
On 1st mile.

4.20

Dry water course, easterly 15 lks. wide.
Var. 15° E.

40.00

Ascend, brushy N. slope.
Set a live oak post 3 ft. long, 3 ins. sq. 1½ ft. in ground, marked ½
M. L. L. on S. E. face for ½ mile post, from which,

RESURVEY OF BOUNDARIES OF RANCHO LA
LIEBRE.

- A live oak, 4 ins. diam. bears S. 10° E. 35 lks. dist.
A live oak, 4 ins. diam. bears S. 3° W. 33 lks. dist., both marked
L. L. $\frac{1}{2}$ M. B. T.
- 45.00 A spur sloping S. E. Thence over gulches and spurs, general slope
S. E.
- 80.00 Set an Oak post 4 ft. long 4 ins. sq. 1 ft. in earth marked L. L.
1 M. on S. E. face, for 1 mile post. Deposited charcoal and built
earth mound 2 ft. high and $4\frac{1}{2}$ ft. base around post.
Dug a pit, 18 x 18 x 12 ins. on line on each side, and $5\frac{1}{2}$ ft. dist.
Land mountainous and broken.
Some pine and Live Oak timber.
Dense undergrowth of Live Oak in some places.
-
- S. 60° 5' W. on 2d mile.
Va. 14° 45' E.
Along uneven S. E. slope.
- 33.00 Enter flat bottom of a canyon N. 20° W. and S. 20° E. Course of
canyon S. 30° E.
- 35.50 A spring bears N. 30° W. 10 chs.
40.00 Set an oak post 3 ft. long, 3 inch sq. 1 ft. in ground, marked
L. L. $\frac{1}{2}$ M. on S. E. side for $\frac{1}{2}$ mile post, deposited charcoal and dug
pits, 18 x 18 x 12 ins. on line on each side of post $5\frac{1}{2}$ ft. dist.
and made md. of earth $1\frac{1}{2}$ ft. high and $3\frac{1}{2}$ ft. base around post,
from which,
A live oak, 6 ins. diam. bears S. 30° W. 41 lks. dist. marked
L. L. $\frac{1}{2}$ M. B. T.
- 45.50 Leave canon here bearing N. 70° W. 5 chs. and S. 70° E. Ascend.
70.00 A spur sloping S. 30° E.
80.00 Set an elm post 4 ft. long, 4 ins. sq. 1 ft. in ground, marked L. L.
2 M. on S. E. face for 2 mile post, deposited charcoal and dug pits,
18 x 18 x 12 ins. on line on each side and $5\frac{1}{2}$ ft. dist. and built
md. of earth around post 2 ft. high and $4\frac{1}{2}$ ft. base.
Land mountainous.
Soil 3rd rate.
Some Live Oak and Digger Pine timber.
Undergrowth Live Oak.
-
- S. 60° 5' W. on 3d mile.
Var. 14° 45' E.
- 3.00 A gulch, course S. 20° E. Ascend.
17.00 Along S. E. slope of ridge.
40.00 Set oak post 3 ft. long, 3 ins. sq. 1 ft. in ground marked L. L. $\frac{1}{2}$ M.
on S. E. face for $\frac{1}{2}$ mile post, Built around post a md. of stone $1\frac{1}{2}$
ft. high and $3\frac{1}{2}$ ft. diam. No trees within 300 links.
- 46.00 A ravine near its head, course S. E.
54.00 Cross ridge, course N. E. and S. W.
Descend.
- 80.00 Set an Elm post, 4 ft. long, 4 in. sq. 2 ft. in ground, marked 3 M.L.L.
on S. E. face for 3 mile post,
from which,
A pinon, 24 ins. diam. bears N. 52 $\frac{1}{2}$ ° E.
17 $\frac{1}{4}$ lks. dist.
A live oak 4 ins. diam. bears N. 82° W. 46 lks. dist. both marked
L. L. 3 M. B. T.
Land mountainous.
Soil 3rd rate.
Scattering live oak timber.

Aug. 30, 1893.

RESURVEY OF BOUNDARIES OF RANCHO LA
LIEBRE.

S. 60° W. on 4th mile.
Var. 15° 10' E.

2.00 Enter flat bottom of canyon bearing N. 30° E. and S. 30° W.
23.50 Leave same. Cross point of hill and at
29.00 Enter branch of canyon coming from N. W.
40.00 Set oak post 3 ft. long, 3 in. sq. 1 ft. in ground $\frac{1}{2}$ M. on S. E.
face for $\frac{1}{2}$ mile post, deposited a stone marked with a x, dug pits
18x18x12 ins. on line on each side of post and 5 $\frac{1}{2}$ ft. dist. built
a md. of earth 1 $\frac{1}{2}$ ft. high 3 $\frac{1}{2}$ ft. base around post.

43.00 Leave bottom of canon bearing N. W. and S. 30° W. Ascend.
61.00 A gulch, course E.
80.00 Mark a Live Oak, 12 ins. diam. L. L. 4 M. on S. E. face for 4 mile post,
from which
A live oak, 6 ins. diam. bears N. 83° E.
32 lks. dist.
A pinon 14 in. diam. bears S. 21° E. 98 lks. dist. both marked L.L.
4 M. B. T.
Land mountainous.
Soil 3rd rate.
Timber LiveOak and Pinon.
Undergrowth Live Oak.

S. 60° 5' W. on 5th mile, Va. 14° 50' E.
Ascend.

9.00 Cross ridge here sloping S. 35° E.
Descend toward Lechevia Canyon.

40.00 Set an oak post 3 ft. long, 3 in. sq. 1 ft. in ground, marked L. L. $\frac{1}{2}$ M.
on S. E. face for $\frac{1}{2}$ m. post, deposited a stone marked with a x, dug
pits 18 x 18 x 12 ins. on line on each side and 5 $\frac{1}{2}$ ft. dist., built a
md. of earth 1 $\frac{1}{2}$ ft. high, 3 $\frac{1}{2}$ ft. base around post, from which,
A live oak, 8 in. diam. bears S. 32° W.
306 lks. dist., marked L. L. $\frac{1}{2}$ M. B. T.

45.30 A gulch, course S. 20° E.
A spring 5 chs. above line. Ascend.

57.00 A spur, sloping south.
69.00 A gulch, course West.
80.00 The point for the 5 mile post falls on a bluff S. W. slope where it
is unpracticable to establish a corner therefore I retrace 1.05
chs. of the line and at 78.95 chs. am on small spur sloping North.
Set an elm post 4 ft. long, 4 in. sq. 2 ft. in ground marked L.L. 5 M.
W.C. on S. E. face for witness to 5 mile post, from which,
A Pinon 12 ins. diam., bears S. 52° E. 165 lks. dist.
A Pinon 6 in. diam. bears S. 41° W. 82 lks. dist. both marked L. L.
5 M. W. C. B. T.

From true point for 5 mile post S. 60° 5' W. on 6th mile,
Var. 15° E.
Descend abruptly.

20.50 Enter Lechevia Canyon.
23.00 Stream, 2 lks., course S.
House of Abelino Martinez is 12 chs. N.

25.15 West side of canyon. Ascend.
Here I set an oak post 3 ft. long, 3 ins. diam. 1 ft. in ground, marked
L. L. $\frac{1}{2}$ M. W. C. on S. E. face for witness to $\frac{1}{2}$ mile post.
The tree point for said post falls on steep east slope, an unsuitable
place, for establishing it, build md. of stone around post 1 $\frac{1}{2}$ ft. high
and 3 $\frac{1}{2}$ ft. base, from which,
A live oak, 7 ins. diam., bears N. 14° E. 20 lks. dist.
A live oak, 4 ins. diam., bears S. 29° E. 58 lks. dist., both marked
L. L. $\frac{1}{2}$ M. W. C. B. T.
Ascend abruptly.

RESURVEY OF BOUNDARY LINES OF RANCHO
LA LIEBRE.

40.00 True point for $\frac{1}{2}$ M. post.
 43.00 A spur sloping S. Descend.
 48.00 Road to Marble Quarry bearing N. and S. E.
 57.50 Enter flat ravine, course S.
 60.50 Leave same.
 75.00 Enter Pescado canyon, S. 20° E.
 76.12 To live oak, L. L. No. 37.
 Land mountainous.
 Soil mostly 3rd rate, with some little 1st rate in Lechevia Canyon.
 Timber Live Oak, Pinon and White Oak.
 Undergrowth same. Manzanita chaparral, and slippery elm.
 Aug. 31, 1893.

In Riley canyon, also called cottonwood canyon, I find a lime stone 25 x 10 x 8 ins. marked L. L. No. 12 (instead of 38 as in original field notes) in stone mound. From it the spring under a high rock bears S. 45° E. 450 lks. dist. I rebuild the md. and mark 2 bearing trees. From corner, A white oak 60 ins. diam. bears S. 5° W. 114 lks. dist. A white oak, 16 ins. diam., bears N. 77° E. 127 lks. dist. both marked L. L. No. 38 B. T.

Thence, I run,
 N. 69 $\frac{1}{2}$ ° E. on a random line along boundary of Rancho La Liebre,
 Va. 15° E.
 435.30 The live oak cor. No. 37 bears N. 21° W. 355 lks. dist.
 From cor. L. L. No. 37
 S. 69° 2' W. on a true line along boundary of Ro. L. Liebre.
 Va. 14° 55' E.

On 1st mile.
 4.50 Leave Pescado Canyon, bearing S. 20° E.
 24.50 A spur, sloping S. 20° E.
 35.00 A gulch, S. 30° E.
 40.00 Set a manzanita post, 3 ft. long, 3 in. sq. 1 ft. in ground, marked $\frac{1}{2}$ M.
 L. L. on S. E. face for $\frac{1}{2}$ mile post, built a md. of stone 1 $\frac{1}{2}$ ft. high,
 and 3 $\frac{1}{2}$ ft. base around post, from which,
 A Pinon 12 ins. diam. bears N. 75° E. 206 lks. dist.
 A Manzanita 6 ins. diam. bears S. 32 $\frac{1}{2}$ ° E. 216 lks. dist., both marked
 L. L. $\frac{1}{2}$ M. B. T.
 47.00 A small ditch, course S. E.
 64.00 Middle of flat grassy ravine, 3 chs. wide, course S. 20° E. A large
 spring of water bears N. 20° W. 15 chs. dist.
 68.00 A house bears N. 20° W. 6 chs. dist.
 70.00 A spur sloping S. 25° E.
 80.00 Set an elm post, 4 ft. long, 4 ins. sq. 1 ft. in ground, marked L.L.
 1 M. on S. E. face for 1 mile post, built around same a stone md. 2
 ft. high, 4 $\frac{1}{2}$ ft. base from which a x cut on face of a granite rock 4 ft.
 high x 4 x 6, bears N. 37° W. - lks. dist.
 (I omitted to note this distance)
 Land mountainous.
 Soil 2nd and 3rd rate.
 1st half mile has some pine and live oak timber, with undergrowth of
 Manzanita, Chaparral, Slippery Elm and Live Oak. Last half mile is
 open and grassy.

S. 69° 2' W. on 2d mile.
 Va. 14° 50' E.
 4.00 A spur sloping S. 20° E.
 10.00 A gulch, course S. Small spring 4 chs. above.
 15.50 A spur, S. 30° E.
 20.75 Stream, 2 lks. in canyon, course S. E.
 35.50 Spur, S. 30° E.
 40.00 Set an Oak post 3 ft. long, 3 in. sq. 1 $\frac{1}{2}$ ft. in ground marked L. L. $\frac{1}{2}$
 M.

RESURVEY OF BOUNDARIES OF RANCHO
LA LIEBRE.

on S. E. face for $\frac{1}{2}$ M. post. from which,
 A Live oak 4 ins. diam., bears S. 37° E. 39 lks. dist.
 A Live oak, 5 ins. diam., bears S. 19° W. 75 lks. dist., both marked
 L. L. $\frac{1}{2}$ M. B. T.
 42.50 A gulch, course S. E.
 47.50 A spur, sloping S. E.
 56.40 A ravine, course S. E.
 62.50 A spur, sloping S. E. (In flat place)
 73.50 Head of ravine, course S. E.
 79.00 Top of round hill.
 80.00 Set an oak post, 4 ft. long, 4 ins. sq. 2 ft. in ground marked L. L. 2
 M. on S. E. face for 2 mile post, from which
 A white oak, 10 ins. diam. bears N. 32° E. 65 lks. dist.
 A white oak, 30 ins. diam. N. 69° W. 42 lks. dist., both marked L. L.
 2 M. B. T.
 Land mountainous.
 Soil 2d and 3d rate.
 Scattering White Oak Timber
 Good grass.

S. 69° 2' W. on 3d mile.
 Va. 14° 50' E.
 17.00 A large canyon, course S.
 23.50 A spur, sloping S. E.
 37.00 A spur, sloping S. 30° E.
 40.00 Set an oak post, 3 ft. long, 3 ins. sq. $1\frac{1}{2}$ ft. in ground marked L. L.
 $\frac{1}{2}$ N. on S. E. face for $\frac{1}{2}$ mile post, from which
 A white oak, 8 inches diam. bears N. 65° E. 242 lks. dist.
 A white oak, 4 ins. diam., bears S. 45° W. 12 lks. dist., both marked
 $\frac{1}{2}$ M. L. L. B. T.
 43.00 Small gulch, S. 20° E.
 62.00 A gulch, course S. E.
 71.00 Top of hill. Descend.
 80.00 Set a manzanita post 4 ft. long, 4 inches square, 2 ft. in ground,
 marked L. L. 3 M. on S. E. face for 3 mile post, from which
 A live oak 7 ins. diam., bears S. 68° E. 83 lks. dist.
 A live oak 5 ins. diam., bears S. $8\frac{1}{2}^{\circ}$ W. 72 lks. dist., both marked
 L. L. 3 M. B. T.
 Land mountainous.
 Soil 3d rate.
 White and Live Oak and Pine timber.
 Scattering undergrowth some and manzanita, chamize, and slippery elm.
 Sept. 1, 1893.

S. 69° 2' W. on 4th mile,
 Va. 15° 10' E.
 5.00 A small gulch, course S.
 20.50 A large gulch, course S. E.
 40.00 Set an oak post, 3 ft. long, 3 in. square $1\frac{1}{2}$ ft. in ground, marked L. L.
 $\frac{1}{2}$ M. on S. E. face for $\frac{1}{2}$ mile post, from which,
 A white oak, 8 inches diam. bears S. 33° E. 86 lks. dist.
 A white oak, 8 ins. diam., bears S. $33\frac{1}{2}^{\circ}$ W.
 63 lks. dist., both marked L. L. $\frac{1}{2}$ M. B. T.
 41.00 Top of flat spur sloping S. 30° E.
 Enter small white oak timber.
 51.00 Leave same and descend in Chamize and chaparral.

RESURVEY OF BOUNDARIES OF RANCHO
LA LIEBRE.

- 74.75 Large gulch, course S. 20° W.
75.50 Set an oak post, 4 ft. long, 4 in. sq. 2 ft. in ground marked L. L. 4 M. W. C. on S. E. face for witness to 4 mile post as the tree point for this post falls on steep side of gulch in an unsuitable place. From witness post a manzanita 5 ins. diam. bears S. 56° E. 36 lks. dist. A live oak 4 ins. diam. bears S. 9° E. 58 lks. dist. both marked L.L. 4 M. W. C. B. T.
- 80.00 Tree point for 4 mile post.
Land mountainous.
Soil 3d rate.
Some white and live oak timber.
Dense undergrowth of live oak chamize, chaparral, and manzanita.

From true point for 4 mile post S. 69° 2' W. on 5th mile.
Va. 15° E.
Over brushy spurs generally sloping south.

- 40.00 On high spur, sloping S. Set an oak post, 3 ft. long, 3 ins. square, 1½ ft. in ground, marked L. L. ½ M. on S. E. face, for ½ mile post, A black oak, 9 in. diam. bears N. 46° W. 109 lks. dist. A white oak, 4 ins. diam. bears S. 8° E. 23 lks. dist., both marked L. L. ½ M. B. T.
- 40.25 A trail following spur.
67.00 A gulch, course S. E.
80.00 The true point for 5 mile post falls on bluff slope on N. E. side of a gulch, an unsuitable place for establishing same, therefore, I continue course and at
- 96.90 Set an oak post 4 ft. long, 4 in. sq. 2 ft. in ground marked L.L. 5 M. W. C. on S. E. face for witness to 5 mile post, from which, A live oak 4 ins. diam. bears N. 78° W. 32 lks. dist. A live oak 5 in. diam. bears N. 51° W. 55 lks. dist., both marked L.L. 5 M. W. C. B. T.
Land mountainous.
Soil 3d rate.
Dense undergrowth of chamize.
Live oak, manzanita and chaparral.

From true point for 5 mile post S. 69° 2' W. on 6th mile.
Va. 15° E.

- 10.50 Gulch, course S. E.
16.90 To witness corner
35.30 To grant cor. L. L. No. 12, formerly called 38,
Land mountainous.
Soil 3d rate.
Some white oak, timbers in canyon.
Undergrowth chamize, manzanita, and live oak.
Sept. 2, 1893.

On the top of a high ridge, the divide between Antelope Valley and the San Joaquin basin I find a Juniper post standing in stone md. marked L. L. No. 1 and L. A. No. 3 being a corner common to the Ro. La Liebre and Ro. Los Alamos of Agua Caliente, I mark here two bearing trees,
A white oak 24 inches diam. bears N. 83½° W. 122 lks. dist.
A white oak 15 ins. diam., bears N. 62½° W. 143 lks. dist., both marked L. A. No. 3 B. T. There are no trees in the La Liebre side
Thence, I run,

RESURVEY OF BOUNDARIES OF RANCHO
LA LIEBRE.

- N. 57 $\frac{3}{4}$ ° E. on a random line along boundary of grant.
Va. 15° E.
267.20 Cor. L. L. No. 38, bears N. 35 $\frac{3}{4}$ ° W. 32.40 chs. dist.
Thence, I run,
S. 50° 47' W. on a true line along the boundary of Ro. La Liebre,
Va. 15° E.
Ascend steep East slope of mountain.
40.00 The point for $\frac{1}{2}$ mile cor. falls in steep side of mountain, an unsuit-
able place to establish a monument, thence I continue on line and at
66.50 Am on rather flat top of mountain and mark a Live Oak 6 ins. diam.
L. L. $\frac{1}{2}$ M. W. C. on S. E. face for witness to $\frac{1}{2}$ mile post, from which,
A live oak, 8 ins. diam., bears S. 82° W. 50 lks. dist.
A live oak, 5 ins. diam. bears S. 80° E. 17 lks. dist. both marked
L. L. $\frac{1}{2}$ M. W. C. B. T.
74.00 Descend from ridge, here bearing North and S. 30° W.
80.00 Set an oak post 4 ft. long 4 in. sq. 2 ft. in ground marked L.L. 1 M.
on S. E. face for 1 mile cor. from which,
A live oak, 4 ins. diam., bears S. 23° E. 54 lks. dist.
A live oak, 4 ins. diam., bears S. 15° W. 35 lks. dist., both marked
L. L. 1 M.
Land mountainous.
Soil 3d rate. Timber Live Oak.
Undergrowth Manzanita and chaparral.
-
- S. 50° 47' W. on 2d mile.
Va. 14° 50' E.
Descend.
13.50 Head of large gulch runs N. 20° W. 10 chs. and thence N. 70° W. Ascend.
30.00 Come to open ground.
37.00 Again on summit of mountain somewhat smooth.
40.00 Set an oak post 3 ft. long 3 ins. sq. 1 ft. in ground, marked L. L. $\frac{1}{2}$ M.
on S. E. face for $\frac{1}{2}$ mile post.
Built Md. of stone $1\frac{1}{2}$ ft. high and $3\frac{1}{2}$ ft. base around post, from which,
A live oak 5 ins. diam. bears S. 45° E. 13 lks. dist.
A live oak, 4 ins. diam., bears S. 31° W. 26 lks. dist., both marked
L. L. $\frac{1}{2}$ M. B. T.
80.00 Set an oak post 4 ft. long, 4 in. sq. 2 ft. in ground marked L. L. 2 M.
on S. E. face for 2 mile post, built a stone md. 2 ft. high and $4\frac{1}{2}$ ft.
base around post, from which
A live oak, 4 ins. diam. bears S. 75° E. 76 lks. dist., marked L. L.
2 M. B. T.
Land mountainous.
Soil 3d rate, very stoney.
Timber, live oak, pinion and black oak.
Undergrowth, live oak, manzanita, and chaparral.
-
- S. 50° 47' W. on 3d mile.
Va. 14° 40' E.
21.00 Descend from mountain S. W. slope.
40.00 Set an oak post 3 ft. long, 3 in. sq. $1\frac{1}{2}$ ft. in ground, marked L.L. $\frac{1}{2}$ M.
on S. E. face, for $\frac{1}{2}$ mile post, from which,
A white oak, 15 ins. diam., bears S. 45° E. 21 lks. dist.
A white oak, 14 ins. diam., bears S. 33° W. 46 lks. dist., both
marked L. L. $\frac{1}{2}$ M. B. T.
41.00 Head of gulch, course W.
78.50 Gulch near head, course W.
80.00 Set an oak post, 4 ft. long, 4 in. sq. 1 ft. in ground marked L. L. 3
M. on S. E. face for 3 mile post, built a md. of stone around post 2 ft.
high and $4\frac{1}{2}$ ft. base, from which,
A white oak, 24 ins. diam. bears East 54 lks. dist.

RESURVEY OF BOUNDARIES OF RANCHO
LA LIEBRE.

A live oak 10 ins. diam. bears S. 33° E. 95 lks. dist., both marked
L. L. 3 M. B. T.
Land mountainous.
Soil 3rd rate.
Timber live and white oak and pinon.
Undergrowth Live Oak, mahogany and manzanita.

S. 50° 47' W. on 4th mile.
Var. 15° E.
Ascend through brush.
11.00 Pass just N. W. of peak of brushy mountain. Descend.
27.20 To cor. L. L. No. 1 and L. A. No. 8.
Land mountainous.
Soil 3d rate.
Timber Live Oak and Pinon.
Undergrowth chaparral, mahogany, and manzanita.
Sept. 4, 1893.

From cor. L. L. No. 1 and L. A. No. 8.
I run,
N. 24 3/4° E. on a random line along boundary of Ro. Los Alamos
Va. 15° East
318.37 The White Oak, 36 ins. diam. marked L. A. No. 7, Cor. No. 7 of the
Ro. Los Alamos bears N. 65 1/2° W. 92 lks. dist.
The marks are distinct. I mark 2 bearing trees.
A white oak, 20 ins. diam. bears N. 5° W. 101 lks. dist.
A white oak 16 ins. diam., bears S. 80° W. 67 lks. dist. both marked
L. A. No. 7 B. T.
Thence, I run,
S. 24° 35' W. on a true line along boundary of Rancho Los Alamos
on 1st mile.
Va. 14° 50' E.
Over small spurs and gulches.
General course, N. 60° W.
40.00 Set an oak post 3 ft. long, 3 in. sq. 1 1/2 ft. in ground, marked L. A.
1/2 M. on N. W. face for 1/2 mile post
from which
A white oak, 24 ins. diam. bears S. 87° W. 26 lks. dist.
A white oak, 14 ins. diam. bears N. 10° W. 54 lks. dist., both marked
L. A. 1/2 M. B. T.
42.00 A ravine, course W.
80.00 On high spur, sloping N. 70° W.
Set an oak post 4 ft. long, 4 ins. sq. 2 ft. in ground, marked L. A. 1
M. on N. W. face for 1 mile post. from which,
A black oak, 9 ins. diam. bears N. 18° E. 69 lks. dist.
A white oak, 10 ins. diam., bears N. 81° W. 115 lks. dist., both
marked L. A. 1 M. B. T.
Land mountainous.
Soil 2d and 3d rate.
Timber white and black oak.
Good grass.

S. 24° 35' W. on 2d mile.
Va. 14° 50' E.
21.00 Enter Live Oak timber and brush.
32.00 A rocky spur N. W.

RESURVEY OF BOUNDARIES OF RANCHO
LOS ALAMOS.

- 40.00 On small spur sloping W.
Set an oak post 3 ft. long 3 in. sq. $1\frac{1}{2}$ ft. in ground, marked L.A.
 $\frac{1}{2}$ M. on N. W. face for $\frac{1}{2}$ Mile post. from which,
A white oak, 8 ins. diam., bears N. 78° W. 32 lks. dist.
A live oak, 18 ins. diam., bears N. 51° W. 126 lks. dist. both marked
L. A. $\frac{1}{2}$ M. B. T.
Leave brush and run through open white oak timber.
- 48.00 ~~At~~ open spur sloping N. W.
- 52.00 A spur, sloping N. W.
- 66.00 Stream 3 lks. wide, in large gulch course N. 30° W.
- 80.00 Set an oak post 4 ft. long, 4 in. sq. 2 ft. in ground, marked L. A.
2 M.

RE-SURVEY OF A PORTION OF THE S.
BDY. OF RANCHO
LA LIEBRE.

I re-run the rancho boundary line from station L. L. No. 7 to Station L. L. No. 6 in order to properly connect survey to be made with rancho boundary and to obtain the true bearing and correct measurement of said line, as there appears to be a discrepancy in the reported length of this line.

August 19: At 7h. 33m. A. M. 1.mt., I set off $34^{\circ} 45'$ on the lat. arc; $12^{\circ} 54'$ on the decl. arc; and determine a true meridian with the solar at cor. L. L. No. 7 on the rancho bdy. line described on page 15, Book 13 of Subdivisions T. 8 N., R. 16 W. of this contract.

Thence, I run,
West, on a random line on S. bdy. of Rancho La Liebre setting temp. $\frac{1}{4}$ mile and mile cor.'s at intervals of 40.00chs.
At 157.60 chs. intersect cor. L. L. No. 6 of the Rancho, boundary line which is a redwood post 4 ins. sq., 2 ft. above mound stone and earth, marked L. L. No. 6 on N. face.

Thence, I run,
East, on a true line on S. bdy. of Rancho La Liebre.
Ascend gradually.

14.60	Enter brush bears N. and S. Begin rapid ascent.
24.40	Top of spur bears N. E. 150 ft. above cor. Descend.
35.65	Cross gulch 60 lks. wide, 200 ft. below spur, course N.
	Ascend.
37.60	Set a sandstone 16 x 8 x 8 ins. 12 ins. in the ground for $\frac{1}{2}$ mile point from L. L. No. 7 marked L. L. $\frac{1}{2}$ M. on N. face, and raise a md. of stone covered with earth $2\frac{1}{2}$ ft. base $1\frac{1}{2}$ ft. high N. of cor.
46.00	
38.60	Top of spur 100 ft. above gulch bears N. E. Descend.
46.60	Cross gulch 20 lks. wide, 150 ft. below spur, course N.
	Ascend.
50.60	Top of spur 150 ft. above gulch, bears N.; descend.
55.60	Cross gulch 10 lks. wide, 100 ft. below spur, course N.; ascend.
60.60	Top of ridge bears N. E. and S. W. 200 ft. above gulch.
	Thence over summit.
68.60	Begin descent of E. slope of ridge.
77.60	Set a sandstone 16 x 8 x 6 ins. 12 ins. in the ground for 1 mile point from L. L. No. 7 marked L. L. 1 M. on N. face and raised a mound of stone 3 ft. base $1\frac{1}{2}$ ft. high W. of cor. Pits impracticable.
83.60	Enter Swale, course N. E. Leave brush.
89.50	Leave Swale and ascend spur, bears N. E. and S. W.
	Enter brush bears N. and S.
91.40	Top of spur bears N. E. 60 ft. above swale; descend.
94.50	Cross gulch 17 lks. wide 75 ft. below spur, course N. Ascend.
97.85	Top of spur 75 ft. above gulch, bears N. E.; descend.
99.25	Cross gulch 9 lks. wide, course N. Ascend.
103.85	Top of ridge 100 ft. above gulch bears N. and S.; descend.
	Leave brush bears N. and S.
117.60	A pine 6 ins. diam. for $\frac{1}{2}$ mile point from L. L. No. 7 marked L. L. $\frac{1}{2}$ M. on N. face; and raise a mound of stone $3\frac{1}{2}$ ft. base $1\frac{1}{2}$ ft. high N. of tree.
	Pits impracticable.
125.40	Enter Canon, course E. Thence along N. side of Canon,
157.60	To cor. L. L. No. 7 of Rancho La Liebre.
	Land, mountainous and rolling.
	Soil 2nd rate,
	Timber a few scattering scrub pine on ridges. Undergrowth 83.35 chs. dense chaparral. Mountainous land 125.40 chs. Rolling land 32.20 chs.

August 19, 1901.

GEORGE W. PEARSON
U. S. DEPUTY SURVEYOR.