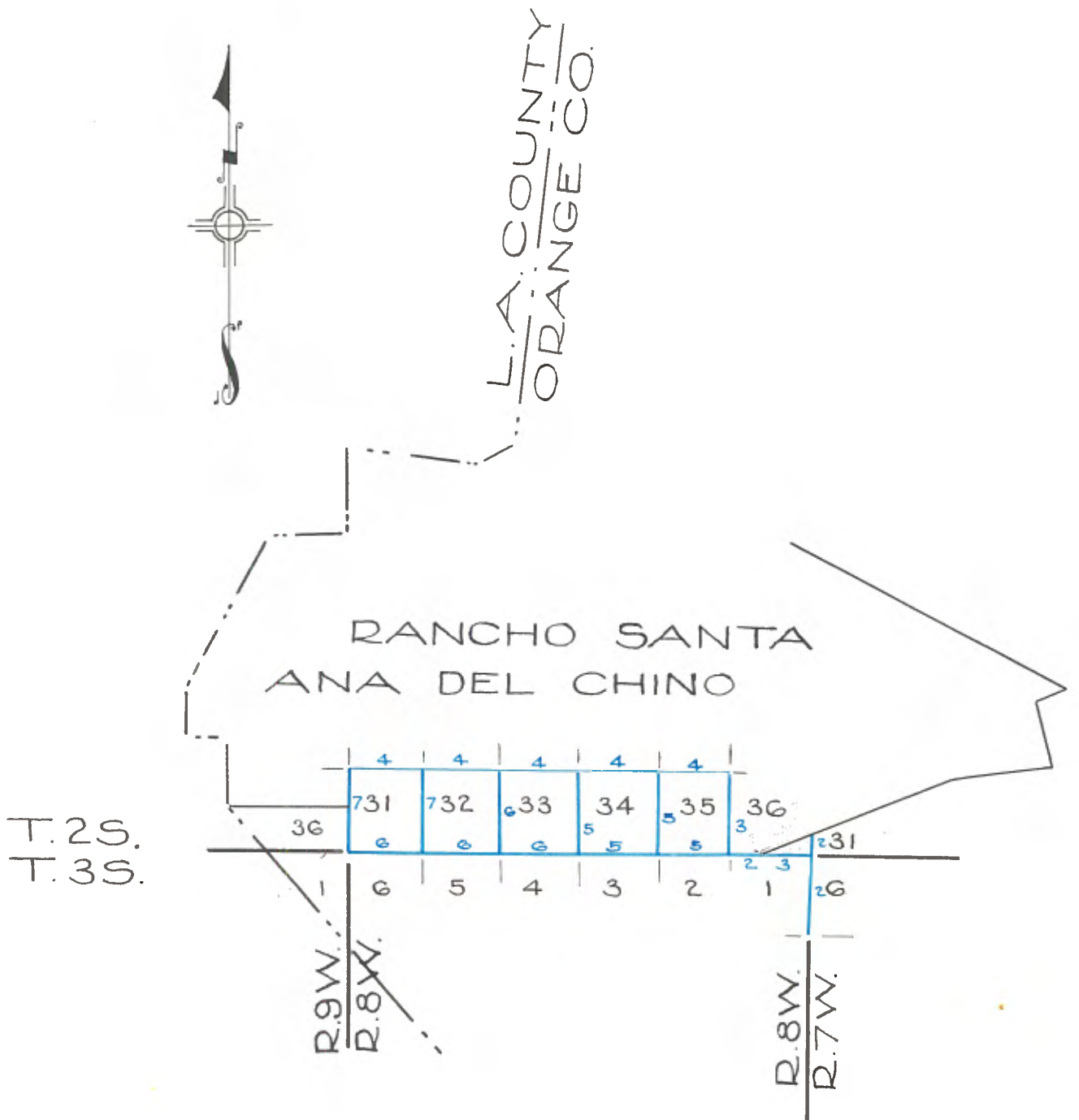


Copies from Photographic Copies
 furnished by
 U.S. General Land Office,
 WASHINGTON, D. C.



Blue, Ebenezer Hadley ~1872

PRELIMINARY OATH OF ASSISTANTS.

I, EBENESER HADLEY, do solemnly swear that I will well and truly perform the duties of Compassman, according to instructions given me, and to the best of my skill and ability.

EBENESER HADLEY.

SUBSCRIBED AND SWORN to before me this 6th day of Sept., 1872.

J. J. WARNER,
Notary Public.

We, H. N. HART and DAVID ANDERSON and A. L. GOFFELMIER, do solemnly swear that we will faithfully execute the duties of Chain Carrier; that we will level the chain upon uneven ground, and plumb the tally pins, whether by sticking or dropping the same; that we will report the true distance to all notable objects, and the true length of all lines; that we will assist in measuring, to the best of our skill and ability.

A. L. GOFFELMIER
DAVID ANDERSON.

SUBSCRIBED AND SWORN to before me, this 6th day of Sept, 1872.

EBENESER HADLEY,.....U.S. DEPUTY SURVEYOR.

I, H. N. HART, do solemnly swear that I will well and truly perform the duties of Axeman according to instructions given me, and to the best of my skill and ability.

H. N. HART.

SUBSCRIBED AND SWORN to before me, this 6th day of Sept, 1872.

EBENESER HADLEY,.....U.S. DEPUTY SURVEYOR.

FIELD NOTES
of the
SUBDIVISION LINES OF TOWNSHIP 2 SOUTH, RANGE 8 WEST
of
SAN BERNARDINO MERIDIAN.

To determine the proper adjustment of my compass and not being able to find the Township Corner of Townships 2 and 3 South, Ranges 7 and 8 West, which have been destroyed by high water, as well as the mounds on the Range line North, could not be identified after a thorough search. I find by running a line from a well established corner, (Government) on Range Line Cor. to Secs. $\frac{12}{6} \frac{7}{1}$, Township 3 South, Ranges 7 and 8, West. North 78.58 chs. as shown on the public Surveys, and to run a line from a well established Corner on Township Line Cor. to Sections 36, 35, 2 and 1, East so as to intersect gives me a Variation of $14^{\circ} 45'$ East, At this point, I re-established Township Cor. to Secs. 36, 31, 1 and 6 by setting a post and charred stake with pits and mound of earth as per instructions.

80.00

Subdivision commenced September 10, 1872.

Field Notes of a fraction in S.E. Cor. of Section 36, Tp. 2 S., R. 8 West, of San Bernardino Meridian, North on Range Line, Var. $14^{\circ} 45'$ East.

19.50

To Ranch Line of Santa Ana del Chino, Set a yellow sand stone rock 18, 12, 12 for fractional $\frac{1}{4}$ sec. cor. Land mostly level, soil first rate.

Thence South $71\frac{1}{2}^{\circ}$ West, Var. $14^{\circ} 45'$ East.

15.50

El Chino Creek runs 8.65° East.

26.49

Road to Los Angeles.

46.50

Cross bottom to low hills.

50.77

Set a gray granite stone and a large post at Station No. 1 El Chino Ranch.

Land mostly level, soil first rate.

South,

Var. $14^{\circ} 45'$ East.

3.00

To Station 22 of "El Chino Ranch" on South Boundary of Sec. 36. Set a large ~~lime~~ granite stone, with mound of earth and pits. Land level, soil first rate.

8.00

East on South Boundary of Sec. 36, on random line.

24.00

Set temporary $\frac{1}{4}$ Sec. Cor.

26.50

Road to Los Angeles N. 65° W.

42.00

Pass board fence.

48.00

To El Chino Creek, S. 60° East.

To point of beginning, Cor. to Secs. 36, 31, 1, and 6. Land level, soil first rate.

TOWNSHIP 2 S., RANGE 8 W., S.B.M.

West on a true line,
Var. 14° 45' East.

- 40.00 Set a post and charred stake with mound of earth and pits for $\frac{1}{4}$ Sec. Cor.
48.00 To Station 22 of El Ohino Rancho.
80.00 Cor. to Secs. 35 and 36, 2 and 1, which Cor. I reestablished, Set post and charred stake mound of earth and pits as per instructions, first 40.00 chs. land level, last 40.00 chs. gently rolling, soil first rate.

North, on random line between Secs. 35 and 36,
Var. 14° 45' East.

- 10.00 Dry wash, North East.
25.00 Leave rolling land, E. and W.
30.16 Small house 1.00 ch. West.
30.66 Zanja E. and W.
40.00 Set a temporary $\frac{1}{4}$ Sec. Cor.
73.00 Road to Los Angeles, N. W.
80.00 No Section Cor. could be found.
I set a gray granite 18 x 12 x 10 inches, marked as per instructions for Cor. to Secs. 35 and 36,
Land mostly level, soil first rate.
South on true line.

Var. 14° 45' East.

- 40.00 Set a gray granite stone 14 x 10 x 5 inches for $\frac{1}{4}$ Sec. Cor.
80.00 Cor. to Secs. 35 and 36, on South Boundary of Township, 2 South, Range 8 West.

West, on random line on North Boundary of Secs. 35,
Var. 14° 45' East.

- 13.00 Road to Los Angeles, N.W.
21.50 Zanja runs S.E.
40.00 Set a temporary $\frac{1}{4}$ Sec. Cor. small house bears S.W. 2.00 chs. dist.
75.00 Leave bottom land enter low hills.
80.00 Set a temporary Cor. to Secs. 34 and 35,
Land mostly level, soil first rate.

West on random line on North Boundary of Sec. 34,
Var. 14° 45' East.

- 2.00 To top of hill.
40.00 Set temporary $\frac{1}{4}$ Sec. Cor.
41.00 Dry Wash.
66.00 Dry Gulch, N.E.
80.00 Set a temporary Sec. Cor. to Sections 33 and 34,
Land gently rolling, soil 1st rate.

West, on North Boundary of Sec. 33,
Var. 14° 45' East.

- 40.00 Set a temporary $\frac{1}{4}$ Sec. Cor. on West slopes of low hills.
40.50 Dry wash.
50.50 Stream of water 5 lks. wide runs N.E.
80.00 Set a temporary Cor. to Secs. 32 and 33.
Land gently rolling, soil 1st rate.

TOWNSHIP 2 SOUTH, RANGES 8 WEST, S.B.M.

West, on North Boundary of Sec. 32,
Var. 14° 45' East.

21.00 Low ridge, S.E.
30.00 Dry ravine, S.E.
35.50 Dry ravine, S.E.
40.00 Set temporary $\frac{1}{4}$ Sec. Cor.
45.00 Low ridge, S.W.
60.00 Dry ravine.
80.00 Set a temporary Cor. to Secs. 31 and 32.
Land gently rolling soil, 1st rate.

West on random line on North Boundary of Sec. 31,
Var. 14° 45' East.

40.00 Set temporary $\frac{1}{4}$ Sec. Cor.
76.80 To a point 60 lks. North of Station No. 19 of El Chino Rancho.
Set a gray granite stone 24 x 8 x 8 inches at Station 19, Corner
to Secs. 31 and 36, on range line Ranges 8 and 9 West, from which
A Black Walnut tree 12 in. diameter, bears N. 45° East 2.13 chs.
dist.
Land hilly and rolling soil, 1st rate mostly.

N. 89° 55' East on a true line on N. Boundary of Sec. 31,
Var. 14° 45' East.

36.80 Set a gray granite stone 15 x 9 x 6 inches for $\frac{1}{4}$ Sec. Cor.
76.80 Set a sand stone 15, 10, 8 for Cor. to Secs. 31 and 2.

N. 89° 55' East on a true line on North Boundary of Sec. 32,
Var. 14° 45' East.

40.00 Set a gray granite boulder 15 x 12 x 8 inches for $\frac{1}{4}$ Sec. Cor.
80.00 Set a gray granite stone 24 x 12 x 10 inches for Cor. to Secs. 32
and 33,
Land gently sloping S.E.

N. 89° 55' East on a true line on the North Boundary of Sec. 33,
Var. 14° 45' East.

40.00 Set a gray granite boulder 12 x 8 x 6 in. for $\frac{1}{4}$ sec. cor.
80.00 Set a gray granite stone 16 x 10 x 8 in. Corner to Sections 33 and
34,

N. 89° 55' East on a true line on the North Boundary of Sec. 34,
Var. 14° 45' East.

40.00 Set a gray granite stone 22 x 12 x 10 inches for $\frac{1}{4}$ Sec. Cor.
80.00 Set a gray granite stone 18 x 10 x 8 in. Cor. to Secs. 34 and 35.

N. 89° 55' East on a true line on the North Boundary of Sec. 35,
Var. 14° 45' East.

40.00 Set a gray granite boulder 14, 10, 8, inches for $\frac{1}{4}$ Sec. Cor.
80.00 Cor. to Secs. 35 and 36,
The Southern portion of this Section hilly.
Northern portion gently sloping to the East.
Soil 1st rate.

TOWNSHIP 2 SOUTH, RANGE 8 WEST, S.B. M.

From Cor. to Secs. 35 and 36,
 Var. $14^{\circ} 45'$ East.
 West on the South Boundary of Sec. 35,
 8.00 Dry gulch, N.E.
 11.00 Base of low hills.
 40.00 I re-established the $\frac{1}{4}$ Sec. cor.
 Set a stone 12 x 10 x 8 on East slope of hill.
 45.00 Top of ridge bears S. 80° East.
 74.00 Dry wash, S.E. has scattering Sycamore and Oak timber.
 80.00 I re-established the Cor. to Secs. 34 and 35,
 Set a blue granite stone 14, 10, 8, inches on North slope of low
 hill, first 40.00 chs.
 Land rolling, soil 1st rate.
 Last 40.00 chs. land hilly, Soil 2nd rate.

North on random line between Secs. 34 and 35,
 Var. $14^{\circ} 45'$ East.
 4.00 Dry wash bears East.
 16.00 Top of ridge N.E.
 38.00 Dry gulch.
 40.00 Set temporary $\frac{1}{4}$ Sec. Cor.
 55.00 Low ridge N.E.
 67.00 Dry ravine East.
 79.84 Intersected Cor. to Secs. 34 and 35.
 1st 40.00 chs. rough and hilly soil, 2nd rate. Last 40.00 chs.
 gently sloping, soil 1st rate.
 South on true line,
 Var. $14^{\circ} 45'$ East.
 39.92 Set a granite stone 24 x 12 x 8 inches for $\frac{1}{4}$ Sec. Cor. on North side
 of dry ravine bearing N.E.
 79.84 Cor to Secs. 34 and 35,

West on South Boundary of Sec. 34,
 Var. $14^{\circ} 45'$ East.
 I found the $\frac{1}{4}$ Section Corner right.

North, between Secs. 33 and 34, on random,
 Var. $14^{\circ} 45'$ East.
 15.00 Top of ridge, N.E.
 40.00 Set a temporary $\frac{1}{4}$ Sec. Cor. on right bank of Dry Arroyo, bearing N.E.
 50.00 Deep dry gulch, bears East.
 60.00 Low ridge, bears East.
 65.00 Dry wash, bears N.E.
 70.00 Low ridge, N.E.
 79.80 Intersected Ranch boundary 10 links East of Cor. to Secs. 33 and 34,
 First 40.00 chains hilly and rough, 2nd rate soil. Last 40.00 chs.
 gently rolling, soil 1st rate.
 South 4' East on true line,
 Var. $14^{\circ} 45'$ East.
 39.90 Set a gray granite stone 18 x 13 x 12 for $\frac{1}{4}$ Sec. corner.
 79.80 Corner to Secs. 33 and 34.

TOWNSHIP 2 SOUTH, RANGE 8 WEST, SAN BERNARDINO M.

West on the South Boundary of Sec. 33,
 Var. 14° 45' East.
 I found the $\frac{1}{4}$ Sec. Cor. and Sec. Cor. to be correct.

⊙-----

North between Secs. 32 and 33, on random line,
 Var. 14° 45' East.

1.50 Large trail S.W.
 10.00 Top of ridge, bears E. and W.
 35.00 Deep ravine, bears East.
 40.00 To temporary $\frac{1}{4}$ Sec. Cor.
 63.00 Small house bears West 6.00 chs. dist.
 70.50 Stream of water 4 lks wide, runs East.
 79.76 Intersected Cor. to Secs. 32 and 33, 15 lks. West of Corner.
 Land rolling, soil 1st rate.
 Scattering black Walnut and Oak timber on South half.
 South 6' West, on a true line,
 Var. 14° 45' East.
 39.87 Set a sand stone 15 x 8 x 6 for $\frac{1}{4}$ sec. cor. on East point of low hills.
 79.76 Cor. to Secs. 32 and 33,
 Land mostly sloping to the North.

From Cor. to Secs. 32 and 33,
 Var. 14° 45' East.

I traced the South Boundary of Sec. 32, as far as the Township line had been run by the Government Surveyor the distance being 47.50 chs.,
 I found the mound to be correct up to this point.
 From this point I ran an offset line to make connection with the Western Boundary of the Township.
 A portion of the line being impracticable.
 North from a point 47.50 chs. West of Cor. to Secs. 32 and 33,
 Var. 14° 45' East.

On random offset line North.
 20.00 To a point, Set a yellow sand stone 13 x 9 x 5 for offset Cor.
 Marked with a Cross.
 Land hilly, soil 2nd rate.

West on random line,
 Var. 14° 45' East.

28.50 To a deep ravine has scattering Oak timber.
 32.50 To a point on East slope of hill.
 Set a temporary offset Cor.
 Land hilly and 2nd rate soil.

South on random line,
 Var. 14° 45' East.

10.00 Enter chaparral S.E. and N.W.
 20.00 To a point, Set a temporary Sec. Cor. to Sections 31 and 32,
 Land rough, 2nd rate.

West, on random line,
 Var. 14° 45' East.

40.00 Set a temporary $\frac{1}{4}$ Sec. Cor.
 77.40 To Township Corner of Tps. 2 and 3, S., Rs. 8 and 9 West.
 This corner is situated on a high hill post and mound in good condition. This mile is a continuation of low chaparral and stony ridges

TOWNSHIP 2 SOUTH, RANGE 8 WEST, S.B.M.

and gulches. The South half of Sec.31 is rough, rocky and brushy soil poor 2nd rate.

East on a true line South Boundary of Sec. 31.

Var.14°45' East.

37.40 Set a yellow sand stone 15 x 10 x 4 for $\frac{1}{4}$ Sec.Cor.

77.40 Set a sand stone 18 x 16 x 8 for Cor.to Secs.31 and 32.

North, on a true line,

20.00 Set a sand stone 12 x 10 x 8 inches, marked with a cross for an off-set Corner,

Var.14°45' East.

East on a true line,

Var.14°45' East.

32.50 Set a yellow sand stone 13 x 9 x 5 for offset corner. South.

Var.14°45' East.

20.00 To South Boundary of Sec.32.

Set a sand stone 11 x 8 x 6 for offset Corner, 32,50 chs.East of Cor.to Secs.31 and 32.

North, from Cor.to Secs.31 and 32,
On Random line,

Var.14° 45' East.

10.00 Leave chaparral and enter narrow valley, bearing North.

40.00 Set a yellow sand stone for temporary $\frac{1}{4}$ Sec.Cor.

45.00 Deep ravine bearing East.

79.70 Intersected Cor.to Secs.31 and 32,

13 lks.East of Cor.

The last 35.00 chs.is mostly low ridges and dry ravines, sloping East and mostly covered with sage brush, chaparral, with scattering oak timber.

Soil mostly 2nd rate. South 6 East on true line,

Var.14° 45' East.

39.85 Set a yellow sand stone 12 x 10 x 8 inches for $\frac{1}{4}$ Sec.Cor.

79.70 Cor to Secs.31 and 32 on South Boundary of Township.

From Cor.to Tps. 2 and 3 S., Rs. 8 and 9 West,
I ran North on a random line,

Var.14° 45' East.

40.00 Set a temporary $\frac{1}{4}$ Sec.Cor.on the South slope of a low ridge up to this point, the land slopes N. and is covered mostly with a thick growth of chaparral, scattering Oak timber in the shallow ravines.

80.00 Intersected Cor.to Secs. 30 and 31, 25 lks.East of Cor.

Last 40.00 chs.low rolling hills, mostly 1st rate soil.

South 11 East on a true line,

Var.14° 45' East.

40.00 Set a post and mound of stone for $\frac{1}{4}$ Sec.cor.

80.00 Corner to Sections 36 and 31,

Township 2 and 3 South, Ranges 8 and 9 West.

TOWNSHIP 2 SOUTH, RANGE 8 WEST, S.B.M.

GENERAL DESCRIPTION.

The general quality of the land in this fractional Township is considerably above the common average, being well adapted for grazing purposes, with the exception of the Southern part of Section 31, and the central part of the West $\frac{1}{2}$ of Sec. 32, which is . . .