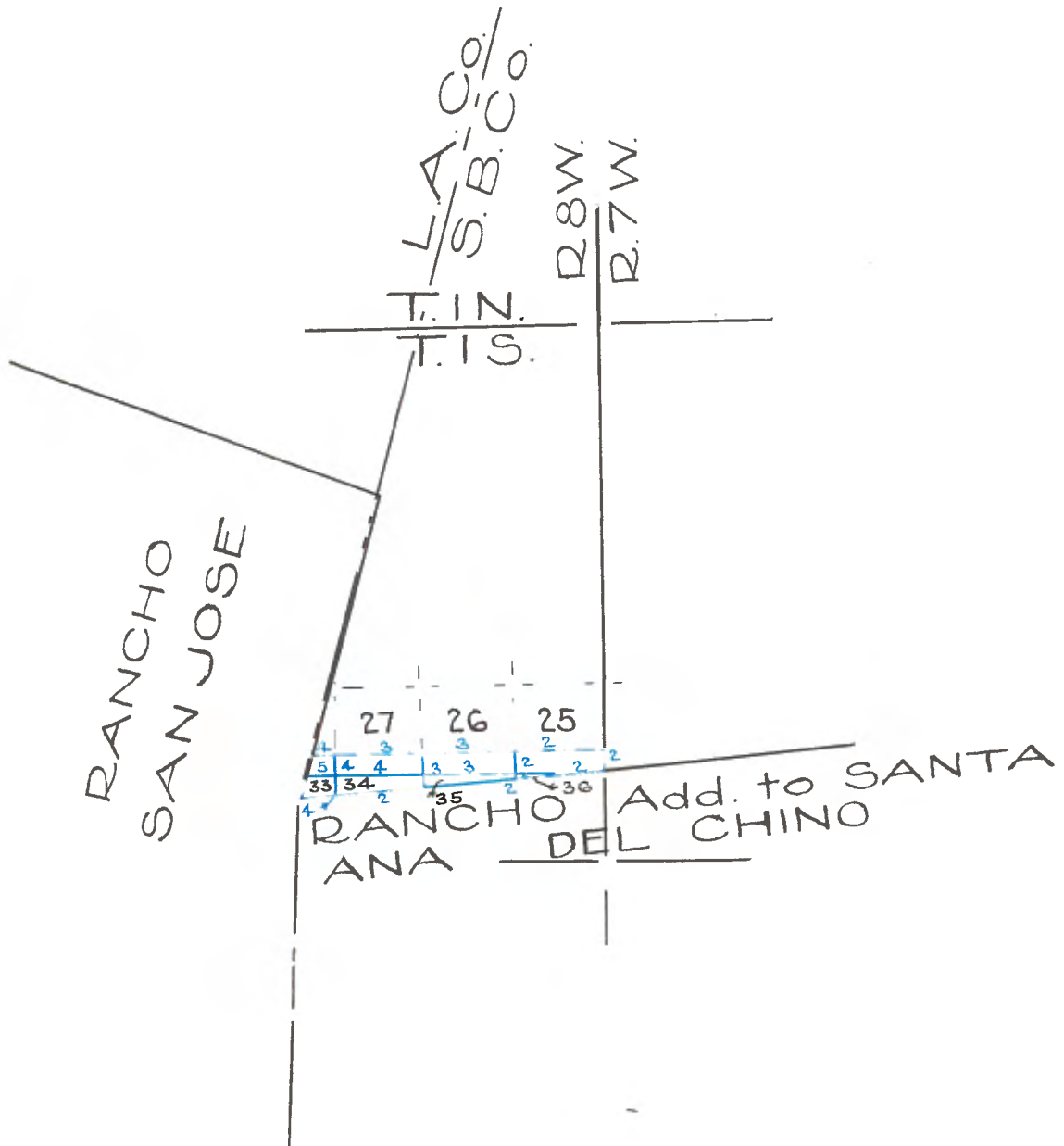


Copied from Photographic Copies
furnished by
U.S. General Land Office,
WASHINGTON, D. C.



Blue, - W^m P. Reynolds - 1875

PRELIMINARY OATH OF ASSISTANTS.

I,..... do solemnly swear that I will well and truly perform the duties of Compassman, according to instructions given me, and to the best of my skill and ability.

SUBSCRIBED AND SWORN to before me, this ___ day of _____, 187 .

U.S. DEPUTY SURVEYOR.

We, OSCAR CHAPMAN and CHAS. CHASE, do solemnly swear that we will faithfully execute the duties of Chain Carriers; that we will level the chain upon uneven ground, and plumb the tally pins, whether by sticking or dropping the same; that we will report the true distance to all notable objects, and the true length of all lines; that we will assist in measuring, to the best of our skill and ability.

OSCAR CHAPMAN.
CHAS. CHASE.

SUBSCRIBED AND SWORN to before me this 20th day of December, 1875.
WM. P. REYNOLDS, _____ U.S. Deputy Surveyor.

I, EDWARD FREEMAN, do solemnly swear that I will well and truly perform the duties of Flagman according to instructions given me, and to the best of my skill and ability.

EDWARD FREEMAN.

SUBSCRIBED AND SWORN to before me, this 20th day of December, 1875.
WM. P. REYNOLDS, _____ U.S. Deputy Surveyor.

T. 1 S., R. 8 W., S. B. M.

Begin at Redwood post 3 x 3 and 2½ ft. above ground in an irregular earth mound the established N.W. cor. of Rancho addition to Santa Ana del Chino on Eastern bdry of Rancho San Jose, from which the post marked S.J. 14 Sta. at the foot of a fallen Oak bears S. 16½° W. 46.50 chs. dist.

From the NW. cor. of Rancho Addition to Santa Ana del Chino, I run,

N. 85½° E. Retracing the line of said rancho on reverse course, Var. 14° 40' E.

39.00 Right and West bank of dry wash, course S. 18° W.

43.70 Left and E. bank of wash.

103.50 Cross dry wash 70 lks. wide, course S. 35° W.

281.58 Inst. line bet. Rs. 7 & 8, W., 4.93 chs. North of cor. to Secs. 25, 30, 31 and 36, from which the true point of intersection bears North of point 124 lks. dist., therefore, the true course basis to initial point is S. 85¼° W.

At officially established mound for point of intersection 6.17 chs. North of cor. to Secs. 25, 30, 31, & 36, and set redwood post 3 x 3 in. 4 ft. long, 18 in. deep for cor. to fract. Secs. 25 & 30, and renewed the pits making them 18 x 12 x 10.

SOUTH bet. Secs. 25 & 30,
Var. 15° E.

13.83 The mound at the established cor. of the North bdry. of Rancho "Addition to Santa Ana del Chino" executed by Henry Hancock. Land level, soil 1st rate. Grassy prairie.

WEST on true line in Sec. 25,
Var. 15° E.

79.86 The mound at the formerly established cor. to fract. Secs. 25 & 26,

SOUTH bet. Secs. 25 & 26,
Var. 15° E.

20.00 Set redwood post 3 x 3 in. 4 ft. long and 15 in. deep for cor. to Secs. 25, 26, 35, and 36, in earth mound with four pits 18 x 12 x 14, Land level, soil 1st rate.

EAST on true line bet. Secs. 25 & 36,
Var. 15° E.

6.52 Inst. North Boundary of Rancho "Addition to Santa Ana del Chino", Set redwood post 3 x 3 in, 4 ft. long 18 in. deep for cor. to frac. Secs. 25 and 36, in an irregular earth mound with 3 pits on the line. Land level. Soil 1st rate. The post at cor. to fract. Secs. 25 & 30, bears N. 85¼° E. 73.68 chs. dist.

T. 1 S., R. 8 W., S. B. M.

From cor. to Secs. 26, 25, 36 & 35,
SOUTH bet. Secs. 35 & 36,
Var. 15° E.

.54

Inst. Northern boundary of Rancho Addition to Santa Ana del Chino
Set redwood post 2 x 2 in. 4 ft. long 15 in. deep for cor. to
Fractional Secs. 35 and 36 in an irregular earth mound with 3
pits on the lines 15 x 15 x 12.
Land level, soil 1st rate.
The post cor. to fract. Secs. 25 & 36, bears N. 85½° E. 6.55 chs. dist.

From cor. to Fract. Secs. 25 & 26,
as re-established on North bdry line of the first official survey
of said Rancho Santa Ana del Chino, I run,
WEST in Sec. 26,

Var. 15° E.

79.20

Dry wash, course S. 86° W.

79.94

To the mound at the former established cor. to Fractional Secs.
26 and 27,
Land level, soil 1st rate.

Dec. 20th, 1875.

SOUTH bet. Secs. 27 and 26,
Var. 15° E.

20.00

Set redwood post 3 x 3 in. 4 ft. long 15 in. deep for cor. to Secs.
26, 27, 34 & 35, in earth mound with 4 pits 18 x 12 x 14,
Land level, soil 1st rate.

EAST random line bet. Secs. 26 & 35,

Var. 15° E.

40.00

Set temp. ¼ sec. cor.

79.90

Inst. N. and S. line 7 lks. North of cor. to Secs. 25, 26, 35, & 36,
from which cor. I run,
N. 89° 57' W. on true line bet. Secs. 26 & 35,

Var. 15° E.

39.95

Set redwood post 2 x 2 in. 4 ft. long 12 in. deep for ¼ Sec. cor. in
earth mound with pits E. & W. on line 14 x 12 x 12.

79.90

The cor. to Secs. 26, 27, 34, & 35,
Land level, Soil 1st rate.

SOUTH bet. Secs. 34 & 35,

Var. 15° E.

7.11

Inst. the northern boundary line of Rancho "Addition to Santa Ana
Chino", set redwood post 3 x 3 in. 4 ft. long, 15 in. deep for cor.
to fract. Secs 34 & 35, in earth mound with 3 pits on lines 16 x 12
x 12, Land level, soil 1st rate.
The cor. to Fract. Secs. 3 & 36, bears N. 85½° E. 80.13 chs. dist.

From formerly established cor. to Fract. Secs. 26 - 27, on North lines
of the first official survey of Rancho "Addition to Santa Ana
del Chino".

WEST through Sec. 27,
Var. 15° E.

T. 1 S., R. 8 W., S. B. M.

5.00 Leave dry wash, course S. 20° W.
62.50 Cross dry wash, course S. 15° W. 60 lks. wide.
77.80 Enter dry wash, runs S.
79.96 The formerly established cor. to Fract. Secs. 27 & 28.
Land level, soil 1st rate.
Except in the washes where it is 3rd rate.
Last ½ mile scattering sage and chamise brush.

SOUTH bet. Secs. 27 & 28,
Var. 14° 50' E.
16.00 Leave dry wash at its left bank.
20.00 Set redwood post, 4 x 4 and 4 ft. long and 15 in. deep for cor. to
Secs. 27, 28, 33 & 34, in an irregular mound of
with 3 ft. base, 30 in. high.
Land level, soil 3rd rate.
Sagebrush and Chamise.

EAST random line bet. Secs. 27 & 34,
Var. 14° 50' E.
.50 Enter dry wash, course S.
3.40 Leave dry wash, course S.
40.00 Set temporary ¼ sec. cor.
57.00 Dry wash overgrown with cacti and sage, course S. 15° W.
65.00 Leave dry wash
79.96 Inst. N & S. line 18 lks. South of cor. to Secs. 26, 27, 34 & 35,
from which I run,
S. 89° 52' W. on true line bet. Secs. 27 & 34,
Var. 15° E.
39.98 Set redwood post 2 x 2 in. 4 ft. long 15 in. deep for ¼ sec. cor.
in an earth mound with pits E. & W. 14 x 12 x 12
79.96 The cor. to Secs. 27, 28, 33 & 34,
Land level, soil on E. ½ 1st rate.
On W. ½ 2nd rate and in dry wash, 3rd rate.
Last half mile sage brush and chamise.

SOUTH bet. Secs. 33 & 34,
Var. 14° 50' E.
11.00 On W. bank of dry wash, course S.
13.80 Enter wash.
Inst. North bdry line of Rancho Addition to Santa Ana del Chino
Set redwood post 3 x 3 in. 4 ft. long 18 in. deep for cor. to
Fractl. Secs. 33 & 34 in an irregular mound of earth and rock
with 3 pits on line, 15 x 12 x 12.
Land level, soil 3rd rate.
Sagebrush and Chamise.
The cor. to Fract. Secs. 34 & 35, bears N. 55½° E. 80.18 chs. dist.

From formerly established cor. to Secs. 27 & 28, on Northern
line of the 1st official Survey of Rancho "Addition to Santa
Ana del Chino".
WEST through Sec. 28,
Var. 14° 50' E.
.50 Leave dry wash, course S.
26.00 East bank of dry wash, course S.

T. 1 S., R. 8 W., S. B. M.

29.00 Cross dry wash to W. bank.
30.11 Int. East Dry line of Rancho San Jose.
An Elder post set by me while surveying the said Reho San Jose, bears S. 16 1/2° W. 131 lks. dist.
The post run from at the time of the survey of Rancho for the cor. to fractl. secs. 27 - 28, was a post set in a private survey, which I took for the true cor. which I found to be missing in executing this survey. Land level, soil 2nd rate.
Scattering Elder, sage and chemiseo.

From cor. to Secs. 27, 28, 33 & 34, West bet. Secs. 28 & 33,
Var. 14° 50' E.

.70 Leave dry wash, course S.
35.50 East bank of dry wash of Main San Antonio Creek.
35.95 Int. East bdry. line of Rancho San Jose, set redwood post 3x3 in. 4 ft. long, 15 in. deep for cor. to Secs fractl. 25 & 33, in earth mound with pits on line 15 x 12 x 12.
Land level, soil 2nd rate.
The cor. to fractl. Secs. 28 on the Eastern line of Rancho San Jose bears N. 16 1/2° E. 21.00 obs. dist.

17.75 From cor. to fractl. Secs. 28 & 33, I retrace the East bdry line of Rancho San Jose, S. 16 1/2° W.
The post at the NW. cor. of Rancho Addition to Santa Ana del Chino, from which cor. to Fractl. Secs. 33 & 34, bears N. 85 1/4° E. 41.04 obs. dist.

LIST OF NAMES.

A list of the names of the individuals employed to assist in running, measuring, or marking the lines and corners described in the foregoing Field Notes of Fractional Tp. 1 S., R. 8 W., San Bernardino, showing the respective capacities in which they acted.

.....Compassman.
OSCAR CHAPMAN,.....Chainman.
CHAS CHASE,.....Chainman.
EDWARD FREEMAN,.....Flagman.

FINAL OATHS OF ASSISTANTS.

We hereby certify that we assisted WM. P. REYNOLDS, Deputy Surveyor, in surveying Fractional Tp. 1 South, R. 8 West, San Bernardino and that said Survey has been in all respects, to the best of our knowledge and belief, well and faithfully surveyed, and the boundary monuments planted according to the instructions furnished by the Surveyor-General.

SUBSCRIBED AND SWORN to before me this 21st day of December, 1875.

WM. P. REYNOLDS,
U.S. Deputy Surveyor.

OSCAR CHAPMAN.
CHAS. CHASE.
EDWARD FREEMAN.

T. 1 S., R. 8 W., S.B. M.

FINAL OATH OF DEPUTY SURVEYOR.

I, WM. P. REYNOLDS, Deputy Surveyor, do solemnly swear that, in pursuance of a Contract with JAS. T. STRATTON, United States Surveyor-General for California, bearing date the 30th day of November, 1875, I have well, faithfully and truly, in my own proper person, and in strict conformity with the instructions furnished by the Surveyor-General, the Surveying Manual, and the laws of the United States, surveyed all those parts or portions of Fractional Township 1 South, Range 8 West, San Bernardino, Mex., as are represented in the foregoing Field Notes as having been surveyed by me, and under my directions; and I do further solemnly swear that all the corners of said surveys have been established and perpetuated in strict accordance with the Surveying Manual and printed instructions, and that the foregoing are the true and original Field Notes of each Survey.

WM. P. REYNOLDS, U.S. Deputy
Surveyor.

SUBSCRIBED AND SWORN to before me, this ___ day of ___
_____, 187___.

J. J. WARNER,
Notary Public,

LOS ANGELES.