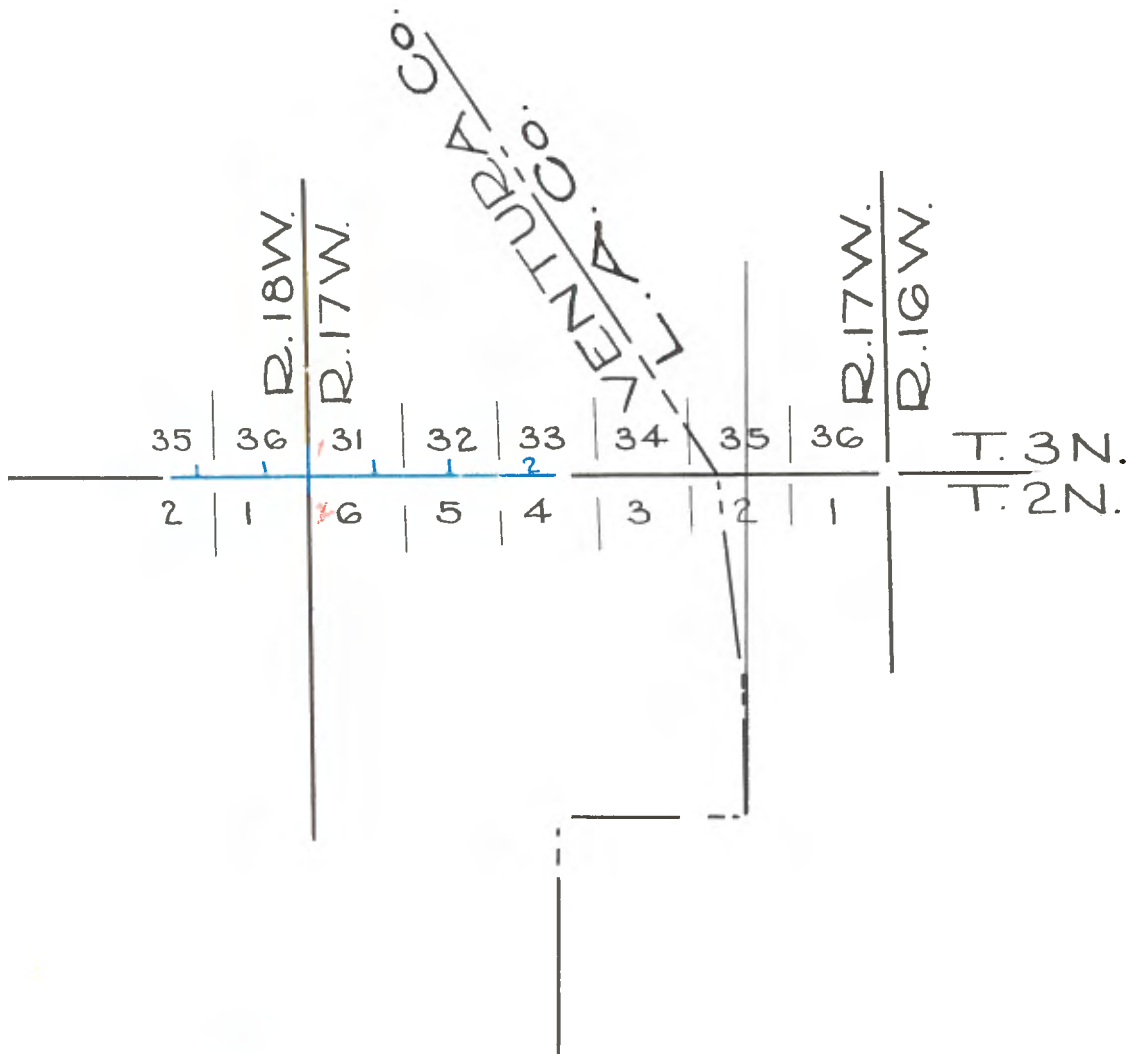


Copied from Photographic Copies
furnished by
U. S. General Land Office,
WASHINGTON, D. C.



Blue — H. Hancock — 1857

chs. Lks. NORTH BOUNDARY OF TOWNSHIP 2 NORTH, RANGE 18 WEST,
SAN BERNARDINO MERIDIAN.

- 40.00 Set a sand stone rock 14 inches long 7 inches wide and 7 inches thick for a $\frac{1}{4}$ Sec. corner.
- 77.00 Across road leading to a Vineyard in a Canon or Canada, coming from the N.E. some 15 chs. distant and 5 chs. wide,
- 80.00 Set a rock 12 inches long, 12 inches wide and 10 inches thick for a corner to Secs. 1, 2, 35 & 36,
From this corner a Peak of the Mountain on the South bears S. 35 $\frac{1}{2}$ E.
Do Do near trail for the Mission
San Fernando, S. 68 $\frac{1}{2}$ E.
Land level, soil 2nd rate.

EAST on the North Boundary of Sec. 1,
Variation 13° 20' East.

- 25.00 To the West bank of the Arroyo of Tapo, course South.
- 26.50 To center of stream, 8 lks. wide, course S.
- 28.00 East bank of same.
- 40.00 Set a rock 14 inches long, 7 inches wide, by 6 in. thick for $\frac{1}{4}$ sec. corner.
- 80.00 Set a sand stone rock 28 inches long, 14 inches wide, and 6 inches thick for corner to Tps. 2 & 3 N., Ranges 17 & 18 West, from this corner Peaks of the Mountain on the South of Valley before taken bear respectively and in the order above mentioned, S. 24 E. & S. 65 $\frac{1}{2}$ E.
Land undulating, soil 2nd rate.

WEST boundary, T. 3 N., R. 17 W., Between Rs. 17 and 18 W.

NORTH on line between Sections 31 and 36,
Variation 13° 20' East.

- 40.00 To South Base of Mountain and set a rock 14 inches long, 8 inches thick and 6 inches wide for $\frac{1}{4}$ Sec. corner.
- 65.00 To the top of the S.E. slope of a mountain spur.
- 66.00 To point on the N.E. face of a ravine, S.E. and finding the mountain too rough to measure further, Set a rock 10 inches long, 7 inches wide, and 6 inches thick, I estimated the distance to a place of Senor Morugas called Tapo to be 60 chs. over faces of the mountain entirely too rough to measure. The said place Tapo must be situated for the most part on the N.E. $\frac{1}{4}$ of Sec. 25.

NORTH BOUNDARY OF TOWNSHIP 2 N., RANGE 17 W., S.B.M.
EAST on the North Boundary of Sec. 6,
Variation 13° 20' E.

- 40.00 Set a post for $\frac{1}{4}$ Sec. corner and deposited 3 pebble rocks 3 inches diameter and dug a trench as per instructions from which a White Oak 15 inches diameter bears S. 40° W. distant 500 lks.
- 64.50 Across dry Arroyo 50 lks. wide, course South with water some 20 chains North.
- 65.00 To W. base of Central portion of a high hill.
- 80.00 Set a Rock 14 inches long, 13 inches wide and 10 inches thick for corner to Secs. 5, 6, 31 & 32, on the West face of hill.
Land principally undulating, soil 2nd rate.

EAST on the North Boundary of Sec. 5,
Variation 13° 20' E.

NORTH BOUNDARY, TOWNSHIP 2 N., RANGE 17 WEST,
SAN BERNARDINO MERIDIAN.

- 6.00 To a point on N. side of the pinnacle of hill some 300 feet above
the Valley.
20.00 To East base.
40.00 Set a rock 14 inches long, 11 inches wide and $2\frac{1}{2}$ inches thick for
a $\frac{1}{4}$ Sec. corner.
80.00 Set a Rock 15 inches long, 6 inches wide and 4 inches thick for a
corner to Secs. 4, 5, 32 & 33, from which a White Oak 30 inches
dia. bears N. 5 E. distant 329 lks.
Land hilly, soil 2nd rate, underbrush sage.

- EAST on the North Boundary of Sec. 4,
Variation $13^{\circ}20'$ E.
40.00 Set a rock for a $\frac{1}{4}$ Sec. corner, 16 inches long, 14 inches wide and
 $2\frac{1}{2}$ thick.
42.00 To a sand stone boulder, 10 feet long, 4 feet high and 4 feet thick
in centre of Ravine, course South on the S.W. face of a rocky range,
and finding it impracticable to measure farther, I return to
corner of Tps. 2 & 3 N., Rs. 17 and 18 W.

- SOUTH between Ranges 17 and 18 W., Tp. 2 N.
South between Sections 1 and 6,
Variation $13^{\circ}20'$ E.
40.00 Set a post for $\frac{1}{4}$ sec. corner and drove a charred stake and raised
a mound with trench and pits as per instructions.
