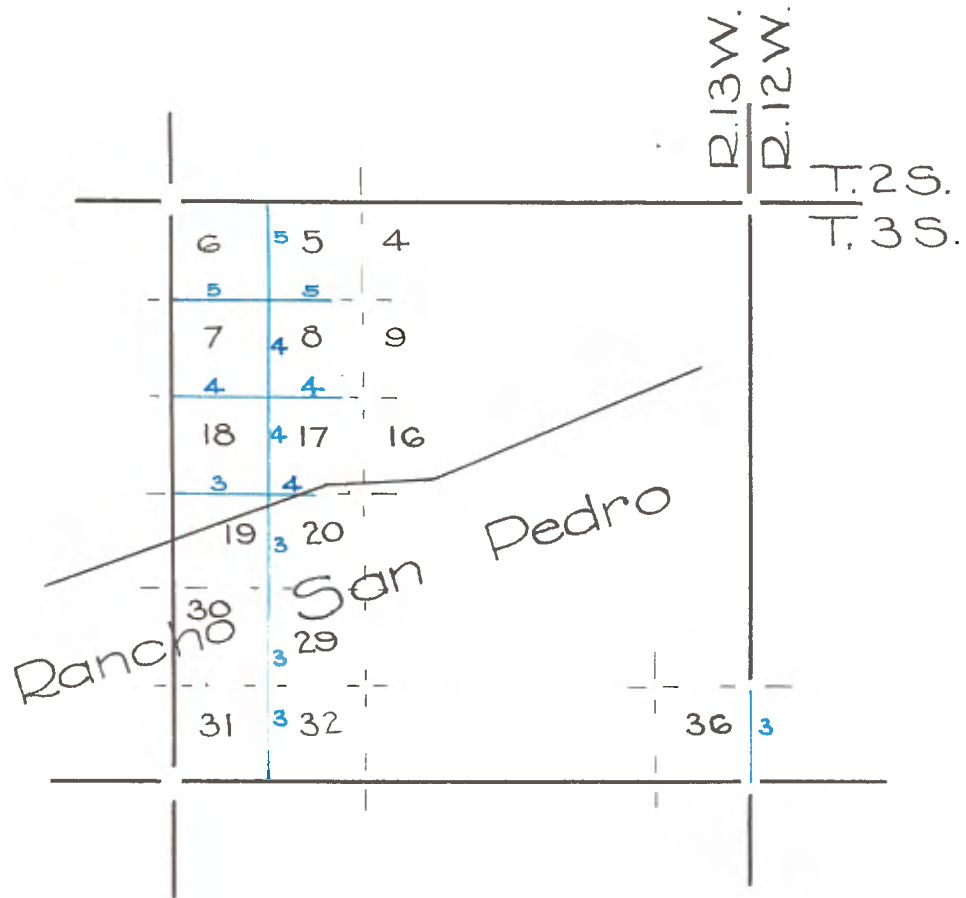


Copied from Photographic Copies
 furnished by
 U. S. General Land Office,
 WASHINGTON, D.C.



Blue lines run by George Honsen - 1868

PRELIMINARY OATHS OF ASSISTANTS.

I, EBENEZAR HADLEY, do solemnly swear that I will well and truly perform the duties of Compassman according to the instructions given me and to the best of my skill and ability.

EBENEZAR HADLEY.

SUBSCRIBED AND SWORN to before me this 14th day of February, A.D. 1868.

GEORGE HANSEN, U. S. DEPUTY SURVEYOR.

I, JOHN NUPENT, do solemnly swear that I will well and truly perform the duties of AXEMAN according to the instructions given me, and to the best of my skill and ability.

SUBSCRIBED AND SWORN to before me this 14th day of February, A.D. 1868.

GEORGE HANSEN, U. S. DEPUTY SURVEYOR.

We, AUGUST ASBRANS and GEORGE GUNNDEISEN, do solemnly swear that we will faithfully execute the duties of Chain Carriers; that we will level the chain upon uneven ground and plumb the tally pins, whether by sticking or dropping the same; that we will report the true distance to all notable objects and the true length of all lines that we may assist in measuring to the best of our skill and ability.

AUGUST ASBRANS.

GEORGE GUNNDEISEN.

SUBSCRIBED AND SWORN to before me this 14th day of February, 1868.

GEORGE HANSEN, U. S. DEPUTY SURVEYOR.

LIST OF NAMES

List of the names of the individuals employed in running, measuring, or marking the lines and corners described in the following Field-Notes of the Subdivision lines of Tp. 3 S., R. 13 W., of the San Bernardino Base & Meridian, showing the express capacities in which they acted.

EBENEZAR HADLEY,....Compassman.

AUGUST ASBRANS,.....Chainman.

GEORGE GUNNDEISEN,..Chainman.

JOHN NUPENT,.....Axeman.

FIELD-NOTES
of
THE SURVEY OF THE
SUBDIVISION LINES in TOWNSHIP 3 SOUTH, RANGE 13 WEST,
SAN BERNARDINO MERIDIAN
as
executed by
G E O R G E H A N S E N
U. S. Deputy Surveyor,
under his Contract, dated February 7th, 1868.

Survey commenced February 24th, 1868.
Survey completed February 28th, 1868.

The largest portion of this Township is occupied by the San Pedro Rancho on the South and the Tajauta and San Antonio Ranchos on the East.

To determine the proper adjustment of my instrument (my compass) for subdividing this fractional Township, I commence at the Cor. to Tps. 3 & 4 S., R. 12 & 13 W., which is in the San Pedro Rancho and run North on a Blank line along the East Boundary of Sec. 35,
Var. 14° E.

- 40.01 To $\frac{1}{4}$ Sec. cor.
80.03 To cor. to Secs. 25 & 35,
Therefore my compass is adjusted right to a Var. of 14° E.
- NORTH: Between Secs. 31 & 32,
Var. 14° E.
80.00 To cor. to Secs. 29, 30, 31, 32, in San Pedro Rancho.
- NORTH
Between Secs. 29 & 30,
Var. 14° E.
80.00 To Cor. to Secs. 19, 20, 29, 30, in Rancho San Pedro.
- NORTH Between Secs. 19 & 20,
Var. 14° E.
- 66.68 Intersect course N 71 $\frac{1}{4}$ ° E. in N. Boundary of Rancho San Pedro, set post ~~S. P.~~ in mound with pits as per instructions. Enter public land.
- 80.00 Set post in mound with pits as per instructions for cor. to Secs. 17, 18, 19, 20,
Land level, soil 1st rate.
- WEST On random line between Secs. 18 & 19,
Var. 14° E.
- 40.00 Set a temporary $\frac{1}{4}$ Sec. post
81.33 Intersect West boundary line of Township at cor. to Secs. 13, 18, 19, 24,
from which cor. I run East on true line,
Var. 14° E.
- 41.33 Set $\frac{1}{4}$ Sec. post in mound with pits as per instructions.
81.33 To cor. to Secs. 17, 18, 19, 20,
Land rolling, Soil 1st rate.
-

TOWNSHIP 3 S., RANGE 13 W., S.B.M.

EAST,

Between Secs. 17 & 20,
Var. 14° E.

37.28 Intersect Course N. 71 $\frac{1}{4}$ ° E. in North Boundary of Rancho San Pedro, set post in mound with pits as per instructions, marked R.S.P., from which bears Rocks at Sta. 4 in North Boundary line of Rancho San Pedro, N. 71 $\frac{1}{4}$ ° E. 7.09 chs.

60.00 To a point in San Pedro Rancho from which offset North, 3.12 chs. intersects true course N. 87° E in N. Boundary line of Rancho San Pedro, the South West Cor. of Rancho Tajauta, set a stake in mound with pits as per instructions, marked R.T. & R.S. P. stake

NORTH:

Between Secs. 17 & 18,
Var. 14° E.

40.00 Set $\frac{1}{4}$ Sec. post in mound with pits as per instructions.
80.00 Set a post in mound with pits as per instructions for cor. to Secs. 7, 8, 17, 18,
Land rolling.
Soil 1st rate.

WEST:

On Random line
Between Secs. 7 & 18,
Var. 14° E.

40.00 Set temporary $\frac{1}{4}$ Sec. post.
61.50 Road running S. 19° W.
81.27 Intersect West line of Township 17 lks. South to Cor. to Secs. 7, 12, 13, 18,
from which cor. I run,
S. 89° 53' E. on true line
40.27 Set $\frac{1}{4}$ Sec. post in mound with pits as per instructions.
81.27 To cor. to Secs. 7, 8, 17, 18,
Land rolling,
Soil 1st rate.

EAST

Between Secs. 8 & 17,
Var. 14° E.

40.00 Set a $\frac{1}{4}$ Sec. post in mound with pits as per instructions.
60.00 Intersect West boundary of Rancho Tajauta set a post in mound with pits as per instructions marked R.T.
Land rolling, Soil 1st rate.

NORTH:

Between Secs. 7 & 8,
Var. 14° E.

22.00 Road running N. 20° W.
40.00 Set $\frac{1}{4}$ Sec. post in mound with pits as per instructions.
60.00 Set post in mound with pits as per instructions for cor. to Secs. 5, 6, 7, 8.
Land rolling.
Soil 1st rate.

TOWNSHIP 3 S., RANGE 13 W., S.B.M.

WEST:

On Random line,
 Bet. Secs. 6 & 7,
 Var. 14° E.
 24.00 Road running N. 20° W.
 40.00 Set a temporary $\frac{1}{4}$ Sec. post.
 81.12 Intersect West boundary line of Township at Cor. to Secs. 1, 6, 7, 12.
 From which cor. I run,
 East on true line, Var. 14° East.
 41.12 Set a $\frac{1}{4}$ Sec. post in mound with pits as per instructions.
 81.12 To cor. to Secs. 5, 6, 7, 8.
 Land rolling.
 Soil 1st rate.

EAST

Between Secs. 5 & 8,
 Var. 14° E.
 40.00 Set $\frac{1}{4}$ Sec. post in mound, with pits as per instructions.
 60.00 Intersect West boundary of Rancho Tajauta, set post in mound with
 pits as per instructions, marked R.T. Land rolling. Soil 1st rate.

NORTH on Random line,
 Bet. Secs. 5 & 6,
 Var. 14° E.

40.00 Set a temporary $\frac{1}{4}$ Sec. post.
 79.76 Intersect North boundary line of Township 8 lks. West of Cor.
 to Secs. 5, 6, 31, 32, from which Cor. I run, S. 0° 04' W. on true line
 Var. 14° E.
 39.76 Set $\frac{1}{4}$ Sec. post in mound with pits as per instructions.
 79.76 To cor. to Secs. 5, 6, 7, 8,
 Land rolling,
 Soil 1st rate.

Feb. 28th.

GENERAL DESCRIPTION

The quality of the land in this fractional Township is superior for small grain and winter crops, and is supposed to produce corn and summer crops, under deep cultivation.

FINAL OATHS OF ASSISTANTS.

We hereby certify that we assisted George Hansen, Deputy Surveyor, in Surveying the Subdivision lines of Tp. 3 S., R. 13 W., of San Bernardino Meridian and Base line, and that said survey has been in all respects to the best of our knowledge and belief, well and faithfully surveyed, and the boundary monuments planted according to the instructions furnished by the Surveyor General.

AUGUST ASHRANS,.....Chainman.

GEORGE GUNNDEISEN,...Chainman.

JOHN NUPENT,.....Axeman.

EBENEZAR HADLEY,.....Compassman.

SWORN TO AND SUBSCRIBED before me this 28th day of Febry, 1868.

JAMES H. LANDES,.....Notary Public.