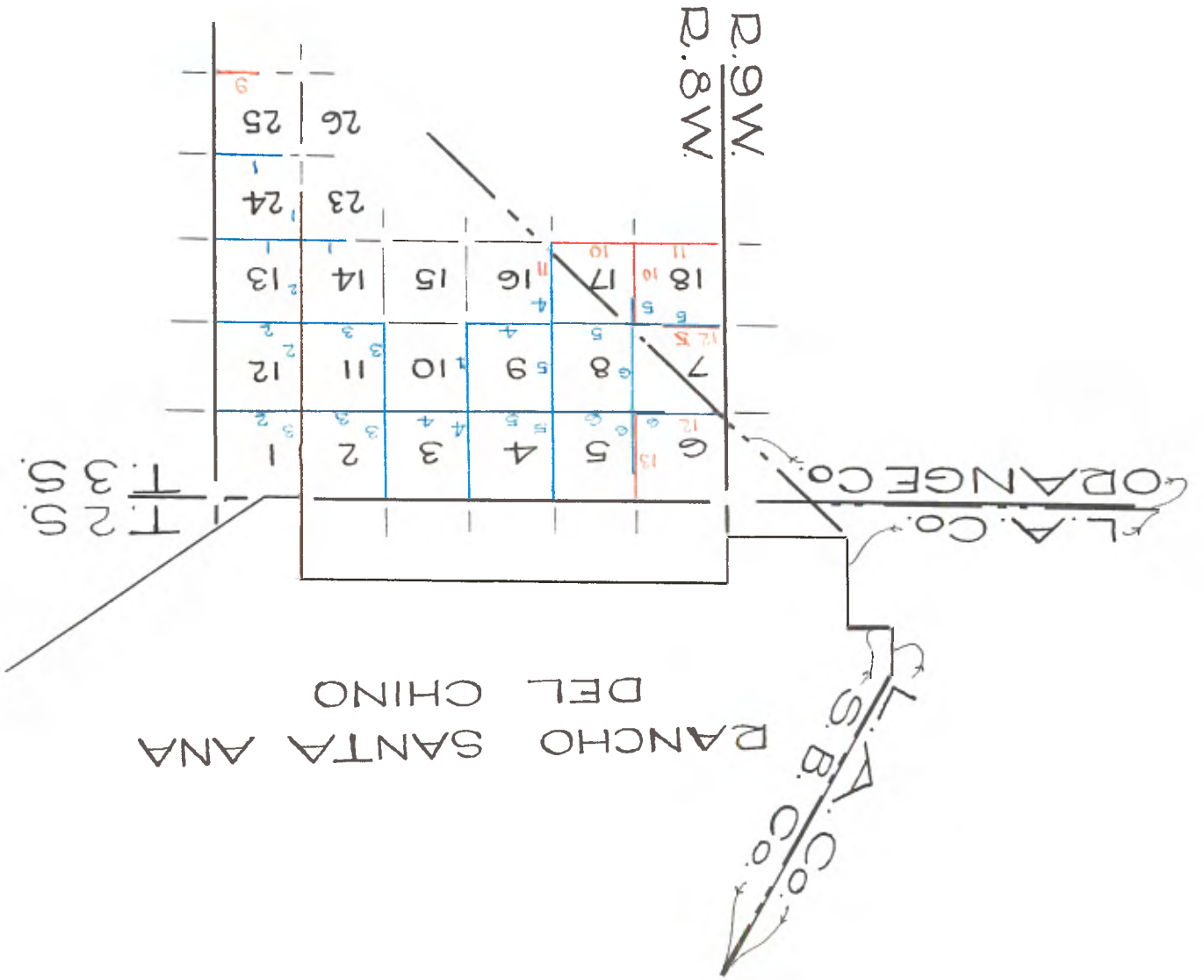


Blue, - H. Hancock - 1865
 Vermillion - John C. Rice - 1894



Copies from photographic copies
 furnished by
 U. S. General Land Office,
 WASHINGTON, D.C.

TOWNSHIP 3 SOUTH, RANGE 8 WEST, S.B.M.

FIELD NOTES of the survey of the Subdivisional lines in Fractional Township 3 South, Range 8 West, San Bernardino Meridian in the State of California, as executed by Henry Hancock, Deputy Surveyor, under his Contract bearing date March 7th, 1865.

SUBDIVISION commenced May 29th, 1865,
SUBDIVISION completed June 3rd, 1865.

Having determined the adjustment of the compass for subdividing this Township to be a Variation of 14° E. by running the E. boundaries of sections 13 and 24, from corner to sections 19, 24, 25 and 30, on the E. boundary of the Tp. 1 run, West between sections 24 and 25, Variation 14° E.

On offset 1 run South 5 chs, thence West on offset. Enter wheat field, bears S. 36° E. Leave same. Measure North 5 chs. to true line. Set a sand stone rock 14 x 10 x 5 for 1/4 sec. cor. as per instructions in a ravine, 2 chs. wide, course S. 40° W. Cross ravine 1 ch. wide, course S. E. Intersect line of Rancho Santa Ana at Station 2 and for cor. to Fractional Secs. 24 and 25, Set post as per instructions, from which bears, A cottonwood, 6 in. dia. N. 25° W. dist 37 lks. Land hilly, soil 2nd rate.

From cor. to sections 13 and 24, on E. bdy. of Tp. 1 run, West between sections 13 and 24, Var. 14° E. To summit of ridge, course S. 74° W. Cross ravine, 1 ch. wide, course S. W. Cross ravine, 1 ch. wide, course S. W. Get 1/4 sec. post and charred stake in mound with pits as per instructions on a ridge, course S. W. Across dry Arroyo, 1 ch. wide, course S. W. Set post and charred stake in mound with pits as per instructions for cor. to Secs. 13, 14, 23 and 24, Land hilly, soil 2nd rate.

SOUTH between sections 23 and 24, Variation 14° E. Set a sand stone rock 14 x 11 x 4 for 1/4 sec. cor. as per instructions at intersection with N. boundary of Rancho "Canon de Santa Ana" 20 chs. W. of Station 3, of said Rancho. Land hilly. Soil 2nd rate.

FROM Cor. to Secs. 13, 14, 23, and 24, WEST between sections 14 and 23, Var. 14° East.

TOWNSHIP 3 SOUTH, RANGE 8 WEST, S.B.M.

8.00 To top of ridge, course N. & S.
 40.00 To station No. 5 of Rancho "Ganon de Santa Anna" and set a sand stone rock 20 x 9 x 5 for $\frac{1}{4}$ Sec. cor. as per instructions.
 Land hilly.
 Soil 2nd rate.

NORTH between Sections 13 and 14,
 Var. 14^o E.
 30.00 To center of deep ravine, course S.E.
 40.00 Set a sand stone rock 20 x 9 x 5 for $\frac{1}{4}$ Sec. cor. as per instructions
 on E. slope of hill,
 41.00 To summit of ridge, course S.E.
 56.50 Across Canon 1 ch. wide, course S.E.
 80.00 Set post and charred stake in mound with pits as per instructions
 for cor. to Secs. 11, 12, 13 & 14,
 Land hilly.
 Soil 2nd rate.

EAST on Random between Sections 12 and 13,
 Var. 14^o E.
 13.50 Cross dry Arroyo, 1 ch. wide, course S.
 35.00 To summit of ridge, course S.
 40.00 Set a sandstone rock 12 x 11 x 8 for temp. $\frac{1}{4}$ sec. cor. on W. slope of hill.
 80.70 Intersect E. boundary of Tp. 50 lks. N. of cor. to Secs. 12 & 13, from which I run N. 89^o 39' W. on true line bet. Secs. 12 and 13,
 Variation 14^o E.
 40.35 Set a sand stone rock 12 x 11 x 8 for $\frac{1}{4}$ Section corner as per instructions.
 80.70 To cor. to Sections 11, 12, 13 & 14,
 Land E $\frac{1}{2}$ mile, very rough.
 West $\frac{1}{2}$ hilly, soil 2nd rate.

NORTH between Sections 11 and 12,
 Var. 14^o E.
 40.00 Set post and charred stake in mound with pits as per instructions
 for $\frac{1}{4}$ Sec. cor. on W. slope of hill.
 43.00 Across dry arroyo, 15 lks. wide, course NE
 To dry arroyo, 20 lks. wide, course E.
 51.50 To top of ridge, course N.E.
 58.50 To top of ridge, course N.E.
 65.00 Gulch, 20 lks. wide, course E.
 72.50 To top of ridge, course N. 25^o E.
 80.00 Set post and charred stake in mound with pits as per instructions,
 for cor. to Sections 11, 12, 11 and 12,
 Land hilly, soil 2nd rate.
 March 31st, 1865.

EAST on Random between Sections 1 and 12,
 Variation 14^o E.
 23.00 Cross dry arroyo, 30 lks. wide, course N.E.
 40.00 Set rock for temp. $\frac{1}{4}$ sec. cor.
 80.40 Intersect E. boundary of Tp. 20 lks. S. of cor. to Sections 1 and 12, from which I run,
 12, from which I run,
 South 89^o 51' W. on true line between Sections 1 and 12,
 Variation 14^o East.

NORTH on random between Sections 2 & 3,

80.22 Land hilly, soil 2nd rate.
 To cor. to Sees. 2, 3, 10 and 11,
 An elder, 6 in. dia. N.W. dist 235 lks.
 from which bears
 40.00 Set a post and charred stake in mound with pits as per instructions,
 Var. 1/4 E.
 S. 89° 39' W. on true line between Sections 2 & 11,
 from which I run,
 80.22 Intersect N. & S. line 50 lks. S. of cor. to Sees. 1, 2, 11 & 12,
 40.00 Set temporary 1/4 sec. post.
 28.50 Top of ridge, course S.W.
 Var. 1/4 E.
 EAST on random between Sections 2 & 11,

80.00 Land hilly, soil 2nd rate.
 per instructions.
 54.50 Set a sandstone rock 13 x 9 x 5 for cor. to Sees. 2, 3, 10 and 11, as
 Across a Canon 2.50 lks. wide, course S. 20° E.
 40.00 Set a sandstone rock 16 x 10 x 8 for 1/4 sec. cor. as per instructions.
 22.50 Cross Canon of Sycamores, 1.50 chs. wide, course S.W.
 Var. 1/4 E.
 NORTH between Sections 10 and 11,

80.00 Land hilly, soil 2nd rate.
 corner of Station No. 7 of the Rancho "Canon de Santa Anna".
 to Sees. 10, 11, 14 & 15, as per instructions at the North East
 76.00 Set a sand stone rock 13 x 11 x 5 on N. slope of a low hill for cor.
 across a gulch 10 lks. wide, course N.W.
 60.00 To summit of ridge, course N.E. and S.W.
 and mark same for 1/4 sec. cor. as per instructions.
 40.00 To point of sandstone ledge on S.W. slope of low ridge, course S.W.
 32.00 To summit of ridge, course N. & S.
 Va. 1/4 E.
 WEST bet. Sees. 11 & 14,
 I run,
 FROM cor. to Sees. 11, 12, 13, and 14,

79.17 Land hilly, soil 2nd rate.
 To cor. to Sections 1, 2, 11 and 12.
 39.17 Set a granite rock 14 x 9 x 8 for 1/4 sec. cor. as per instructions.
 Var. 1/4 E.
 South on true line between Sections 1 and 2,
 79.17 Intersect N. boundary of Tp. at cor. to Sees. 1 & 2, from which I run
 40.00 Set a rock for temporary 1/4 sec. cor.
 35.00 To top of ridge, course E.
 15.00 To center of ravine, 2 chs. wide,
 course S.E.
 Var. 1/4 E.
 NORTH on Random between Sections 1 and 2,

80.40 Land hilly, soil 2nd rate.
 To cor. to Sections 1, 2, 11 and 12.
 40.20 Set a sandstone rock 16 x 8 x 4 for 1/4 sec. cor. as per instructions.

TOWNSHIP 3 SOUTH, RANGE 8 WEST, S.B. M.

TOWNSHIP 3 S., R. 8 W., S. B. M.

Var. 1/4° E. 40.00
 Set a rock for temporary 1/4 sec. cor. Intersect N. boundary of Tp. 70 lks. E. of cor. to Secs. 2 & 3, from which I run, S. 30° E. on true line between Secs. 2 & 3. 40.00
 Set a sandstone rock 17 x 8 x 6 for 1/4 sec. cor. as per instructions. 80.00
 To cor. to sections 2, 3, 10 and 11, Land hilly, soil 2nd rate.

FROM cor. to sections 2, 3, 10 and 11, I run, WEST on true line between sections 3 & 10, Var. 1/4° E.

4.50
 Cross dry Arroyo, 15 lks. wide, course S. To top of ridge, course South 35.50
 Across gulch, 10 lks. wide, course S.W. 40.00
 Set a sandstone rock 17 x 8 x 5 for 1/4 sec. cor. as per instructions. 80.00
 Set post and charred stake in mound with trench and pits as per instructions for cor. to sections 3, 4, 9 and 10, Land hilly, soil 2nd rate.

SOUTH between sections 9 and 10, Var. 1/4° E.

40.00
 Set a sandstone rock 18 x 7 x 6 for 1/4 sec. cor. as per instructions. 41.50
 To center of ravine, 2 obs. wide, course S. 60° E. 69.00
 To top of ridge, course S. 70° W. 80.00
 Intersect N. boundary Rancho Canon de Santa Anna at Station No. 8 of same and set a sandstone rock 11 x 9 x 7 for cor. to sections 9, 10, 15 and 16, as per instructions, Land hilly, soil 2nd rate.

NORTH on Random between sections 3 & 4, Variation 1/4° E.

31.50
 Cross ravine 1 ch. wide, course S.E. 40.00
 Set a rock for temporary 1/4 sec. cor. Across dry arroyo, 5 lks. wide, course E. 77.50
 Intersect N. boundary of Tp. 30 lks. N. of cor. to sections 3, 4, 33 & 34, from which I run, S. 17° W, on true line between sections 3 & 4, 80.50
 Set a white granite rock 18 x 7 x 7 for 1/4 sec. cor. as per instructions To cor. to sections 3, 4, 9 and 10, Land hilly. 40.50
 Soil 2nd rate.

FROM cor. to Secs. 9, 10, 15 & 16, I run, WEST between sections 9 and 16, Var. 1/4° E.

34.00
 Cross Canon 1 ch. wide, course S.E. 40.00
 Set a sand stone rock, 20 x 10 x 8 for 1/4 sec. cor. as per instructions 80.00
 Set a sandstone rock 16 x 12 x 3 1/2 for cor. to sections 8, 9, 16 and 17, on a ridge, course N.E. as per instructions. Land hilly, soil 2nd rate.

SOUTH between sections 16 and 17, Var. 1/4° E.

TOWNSHIP 3 SOUTH, RANGE 8 WEST, S.B.M.

40.00 Intersect N. boundary of Rancho "Canon de Santa Anna" at Station No. 10 and set a sandstone rock 16 x 12 x 8 for $\frac{1}{4}$ sec. cor. as per instructions.
Land hilly, soil 2nd rate.

FROM cor. to Sections 8, 9, 16 & 17, I run,
NORTH between Sections 8 & 9,
Var. 1 $\frac{1}{4}$ E.

40.00 Set a post for $\frac{1}{4}$ sec. cor. in mound with pits as per instructions,
from which bears,
a Walnut tree, 5 in. dia. N. 9 $\frac{1}{2}$ E. dist. 100 lks.

40.50 Across dry arroyo, 50 lks. wide, course N. E.

71.00 Across dry arroyo, 40 lks. wide, course S. E.

80.00 Set a sandstone rock 20 x 10 x 6 as per instructions, for cor. to Sections 4, 5, 8 & 9, from which bears a Walnut tree, 6 in. dia. N. 30 $\frac{1}{2}$ W. dist 113 lks.

Land hilly, soil 2nd rate.

June 2nd, 1865.

EAST on random between Sections 4 & 9,
Variation 1 $\frac{1}{4}$ E.

40.00 Set a rock for temporary $\frac{1}{4}$ sec. cor.

80.00 Intersect N. & S. line 60 lks. N. of cor. to Secs. 3, 4, 9 & 10, from which

I run, 2 $\frac{1}{4}$ W. on true line between Sections 4 & 9,
Var. 1 $\frac{1}{4}$ E.

40.00 Set a sandstone rock 18 x 6 x 5 $\frac{1}{2}$ for $\frac{1}{4}$ sec. cor. as per instructions.
To cor. to Sections 4, 5, 8 & 9,
Land hilly, soil 2nd rate.

NORTH on Random between Sections 4 & 5,
Var. 1 $\frac{1}{4}$ E.

28.00 To top of ridge, course E. & W.

40.00 Set a post for temporary $\frac{1}{4}$ sec. cor.

80.30 Intersect N. boundary of Tp. at cor. to Sections 4, 5, 32 and 33,
from which I run

South on true line between Sections 4 & 5,
Set a sand stone rock 20 x 12 x 6 for $\frac{1}{4}$ sec. cor. as per instructions
To cor. to Sections 4, 5, 8 & 9,
Land hilly, soil 2nd rate.

40.30

FROM CORNER to Sections 8, 9, 16 & 17, I run,
WEST between Sections 8 & 17,
Var. 1 $\frac{1}{4}$ E.

40.00 Set a sand stone rock 18 x 12 x 6 for $\frac{1}{4}$ sec. cor. as per instructions.

54.00 Across Canon 50 lks. wide, course N.

80.00 Set a sandstone rock 18 x 12 x 6 for cor. to Sections 7, 8, 17 & 18,
as per instructions, on N. slope of hill.
Land hilly, soil 2nd rate.

SOUTH between Sections 17 & 18,
Var. 1 $\frac{1}{4}$ E.

TOWNSHIP 3 S., R. 8 W., S. B. M.

11.00 To North bluff of a deep brushy canon, course N.W. and finding it impracticable to measure further South, Set rock mound as per instructions.

WEST on Random between Sections 7 & 18, Var. 14th E.

40.00 Set a rock for temporary $\frac{1}{2}$ Sec. cor.

71.00 To a branch of the Soucal Canon, 1 ch. wide, course S. 80° W.

78.25 Intersect W. boundary of Twp. 40 lks. S. of cor. to Sections 7, 12, 13, & 18, from which I run,

South 89° 43' E. on true line between Sections 7 & 18, Variation 14th E.

38.25 Set a sand stone rock 18 x 10 x 5 for $\frac{1}{2}$ sec. cor. as per instructions, To cor. to Sections 7, 8, 17 & 18, Land hilly, soil 2nd rate.

Land hilly, soil 2nd rate.

NORTH between Sections 7 & 8, Variation 14th E.

23.00 Cross S. branch of Soucal Canon, 1 ch. wide, course W.

40.00 Set a sandstone rock 24 x 10 x 8 for $\frac{1}{2}$ Sec. cor. as per instructions from which bears

An Oak tree 6 in. dia. West dist 24 lks.

78.00 To top of ridge, course E. & W.

80.00 Set a sandstone rock 17 x 12 x 4 for cor. to Sections 5, 6, 7 & 8, as per instructions.

Land hilly, soil 2nd rate.

EAST on Random between Sections 5 & 8, Var. 14th E.

40.00

Set a rock for temporary $\frac{1}{2}$ sec. cor.

80.20

Intersect N. & S. line at cor. to Sections 4, 5, 8 & 9, from which I run

WEST on true line between Sections 5 & 8, Var. 14th E.

40.00

Set a sandstone rock 19 x 10 x 7 for $\frac{1}{2}$ sec. cor. as per instructions, To cor. to Sections 5, 6, 7, & 8, Land hilly, soil 2nd rate.

Land hilly, soil 2nd rate.

NORTH between Sections 5 & 6, Var. 14th E.

30.00

Cross middle branch of Soucal Canon, course S.W.

40.00 Set a sandstone rock 15 x 12 x 6 for $\frac{1}{2}$ sec. cor. as per instructions on S. slope of hill,

61.00 To a point beyond which it is impracticable to measure and set a sand stone rock 30 x 15 x 6 as per instructions.

Land hilly, soil 2nd rate.

FROM cor. to Sections 5, 6, 7 & 8, I run

WEST between Sections 6 & 7, Var. 14th E.

Var. 14th E.

This fractional Township consists principally of rolling hills in some places broken, good pastures of clover and wild oats.

GENERAL DESCRIPTION.

8.50 To E. bluff of a deep brushy canon beyond which it is impracticable to measure. I set a sand stone rock, 16 x 8 x 4 as per instructions. June 3rd, 1865.

TOWNSHIP 3 SOUTH, RANGE 8 W., S.B.M.

BOUNDARY OF PART OF THE RANCHO LA SIERRA (YORBA)

101.80 Enter flat course E. and W.
 107.50 Road to Santa Ana course N.E. and S.W.
 113.00 Wash 50 lks. wide, course N.
 113.96 To cor. No. 20 of the Rancho La Sierra (Yorba) which is an oak 40 ins. diam. (with two prongs, the third prong having been burnt off) marked L.S. No. 20 on N. side, Thence I run, N. 77° W. along boundary line of said rancho. Va. 14° 30' E.

86.30 Over broken land falling N. Spur course N 20° W. Descend.
 101.80 Enter flat course E. and W.
 107.50 Road to Santa Ana course N.E. and S.W.
 113.00 Wash 50 lks. wide, course N.
 113.96 To cor. No. 20 of the Rancho La Sierra (Yorba) which is an oak 40 ins. diam. (with two prongs, the third prong having been burnt off) marked L.S. No. 20 on N. side, Thence I run, N. 67° W. random along boundary of the Rancho La Sierra (Yorba) Va. 14° 30' E.

27.91 To a point S. 22° 30' W. 15 lks. dist. from old cor. of the Rancho Canon de Santa Ana on the boundary line of the rancho La Sierra (Yorba) I find the old post has been replaced with a post 5 ins. square standing firmly 4 ft. above the ground with an iron plate on Ely. side, marked Riverside County. Another iron plate on westerly side marked San Bernardino County. This cor. was placed by the County Surveyor in surveying County boundaries and it was identified to me as being identical with the old cor. It stands on left bank of old channel of river which has been filled up. Thence I run S. 67° 12' E. Va. 14° 30' E.

11.61 Across river bottom. To right bank of Santa Ana River, course S. 30° W. 14.11 To left bank of Santa Ana River 10 ins. deep, Course S. 30° W. 16.70 Road course N. 30° E. and S. 30° W. 18.00 Road course N. and S. 26.40 Top of bank 15 ft. high. To cor. No. 20 of Rancho La Sierra (Yorba) Land 1st course of Rancho boundary mountainous, 2nd course of Rancho boundary level. Soil 3rd rate and 2nd rate. Oct. 17, 1894.

BOUNDARY OF PART OF THE RANCHO LOMAS DE SANTA ANA.

Having found the boundaries of Sec. 36, at variance with the reported distance of the surveys made previously,

I go to old post at the intersection point of Rancho Lomas de Santa Ana with the south boundary of

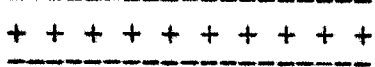
T. 3 S., R. 8 W. described in book of extors,

T. 3 S., R. 8 W.

Thence I run N. 3° 55' W. on a random line along boundary line of Rancho Lomas de Santa Ana. Va. 14° 29' E.

BOUNDARY OF PART OF THE RANCHO LOMAS DE SANTA ANA.

67.65 To a point S. 86° 05' W. 19 lks. dist. from old cor. L.S. No. 3 which is a redwood post 5 ins. square standing firmly 3 ft. above ground marked L.S. No. 3 on S.W. face from which
 A 3 prong Elder bears N 392° E. 392 lks. dist. marked L.S. No. 3 B.T. Thence, I run, S. 30° 45' E. along boundary line of Rancho Lomas de Santa Ana, Va. 14° 28' E. To right bank of Santa Ana river, 9.20 Course West. To left bank of Santa Ana river, course West. 11.50 Road, course E. and W. and thence over rough broken land. Ravine 10 lks. wide, course S. 80° W. Ascend. 55.40 Ridge, course E. and W. 66.10 The intersection cor. of the rancho Lomas de Santa Ana with S. boundary of T. 3 S., R. 8 W. Land 1st 18.00 obs. level. 2nd 49.65 mountainous. Soil 1st and 2nd rate, October 18, 1894.



SUBDIVISIONS T. 3 S., R. 8 W., S. B. M.

From the cor to Secs 25, 30, 31 and 36 on East boundary of the townships previously described, I run west on a true line bet Secs. 25 and 36, Va. 14° 29' E. Through ravine bottom, To left bank of Santa Ana River, course S. 30° W. To right bank of Santa Ana River 10 ins. deep, course S. 30° W. Interest boundary line of Rancho La Sierra (Yorba) At a point where cor of Rancho Canon de Santa Ana boundary line of Rancho La Sierra (Yorba) bears N. 67° 12' W. 7.60 obs. previously described at the point of intersection, I set a willow post 4 ins. square 12 ins. in the ground marked, L.S. on E. R. 8 W. S. 36 on S. and S. 25 on N. face from which A cotton wood 10 ins. diam. bears N. 75° E. 393 lks. dist. marked, T. 3 S., R. 8 W., S. 25 B.T. Interest boundary line of the Rancho Canon de Santa Ana at a point whence cor. of Rancho on boundary line of Rancho La Sierra (Yorba) bears N. 50° E. 3.91 obs. dist. At point of intersection I set a willow post 4 1/2 ft. long, 4 ins. square 24 ins. in the ground for cor. to fractional Secs 25 and 36, marked O.S.A. on W. L.S. on W. R. 8 W. S. 36 on S. and L.S. on W. S. 25 on N. face from which

39.77 R. 8 W. S. 36 on S. and S. 25 on N. faces Land level, Soil 1st and 2nd rate, October 18, 1894.

SUBDIVISIONS T. 3 S., R. 8 W., S.B.M.

Land level,
Soil 1st and 2nd rate.

October 18, 1894.

At 8 A.M. Oct, 19, 1894, I set off 33.54' N. on the lat arc. 10°06'
on the decl. arc and the magnetic bearing of the meridian so
found is N. 14° 31' W. at the old cor. to Secs. 7, 8, 17 and 18, which
is a sandstone 18 x 12 x 6 ins. marked with 4 notches on s. and 5
notches on E. edges, from which,
A walnut tree 6 ins. diam. bears N. 89° 45' E. 100 lks. dist., which
I mark T. 3 S., R. 8 W., S. 8 B. T.
Cor. stands on North open slope, thence, I run,
South on a true line bet. Secs. 17 and 18,
Va. 14° 31' E.

11.00 Ascend open land.
Old rock mound,
High spur, course W.
Descend steep slope in dense brush.
14.10 Gulch 10 lks. wide, course S. W.
Thence ascending over rough broken land in dense brush,
40.00 Set a sandstone 16 x 12 x 5 ins. 11 ins. in the ground for $\frac{1}{2}$
Sec. cor. marked $\frac{1}{2}$ on W. face,
Raised a mound of stone 2 ft. high, $\frac{3}{4}$ ft. base alongside,
Pits impracticable,
High spur, course S. W.
61.50 Descend in scattering brush.
Dry arroyo 10 lks. wide, course W.
- 600 ft.
Ascend in brush
85.35 Intersect boundary line of Rancho Canon de Santa Ana at fence
line at which point I set an Oak post $\frac{1}{2}$ ft. long 4 ins. square
with marked stone 12 ins. in the ground for cor. to fractional
Secs. 17 and 18, marked,
C.S.A. on S.
T. 3 S. on N.
H. 8 W. S. 18 on W. and S. 17 on E. faces
Raised a mound of earth and stone 2 ft high $\frac{1}{2}$ ft base around
post.
Pits impracticable.

Land mountainous
Soil 3rd rate.
Dense oak and chaparral brush.
East on a random line on S. boundary of Sec. 17, and boundary line
of Rancho Canon de Santa Ana,
Va. 14° 31' E.
40.00 Set temporary $\frac{1}{2}$ sec. cor.
To old cor. being the cor. for Station 11 of the Rancho Canon de
Santa Ana identical with the S. E. cor. of Sec. 17,
Post 4 ins. square standing firmly in rock mound $1\frac{1}{2}$ ft. high, 3 ft.
base, marked C.S.A. on E. face and T. 3 S., R. 8 W. S. 17 on W. face,
Cor. stands in cor. of fence, course N. & W.
No trace of old trench and pits-it being impracticable to dig pits.
Thence I run
West on a random line on S. boundary of Sec 17 and boundary lines
of Rancho Canon de Santa Ana with same va.
Along fence line ascending in open land.
40.00 Set a sandstone 15 x 12 x 8 ins. 10 ins. in the ground for $\frac{1}{2}$ sec. cor.
marked $\frac{1}{2}$ on N. face
Dug pits 18 x 18 x 12 ins. E. and W. of post $5\frac{1}{2}$ ft. dist.
Raised a mound of earth 2 ft. high $\frac{1}{2}$ ft. base alongside.
50.10 Ridge, course N. 70° E. and S. 70° W. + 600 ft.
Descend.

SUBDIVISIONS T. 3 S., R. 8 W., S. B. M.

60.00

Enter dense brush, course N.W. and S. The cor. to fractional Secs. 17 and 18, Land mountainous. Soil 2nd rate, and 3rd. Dense chaparral brush.

44.98

From the S.E. cor. of Sec. 17 identical with Station No. 11 of the Rancho Canon de Santa Ana, thence I run, North on a random line on E. boundary of Sec. 17, and boundary line of Rancho Canon de Santa Ana, Va. 14° 31' E. To a point 52 lks. E. of old $\frac{1}{2}$ sec. cor. identical with station No. 10 of the Rancho Canon de Santa Ana which is a post 4 ins. square standing in rock mound, marked $\frac{1}{2}$ S. on W. face and O.S.A. 10 on E. face Rebuild rock mound $1\frac{1}{2}$ ft. high, $3\frac{1}{2}$ ft. base around post cor. stands in cor. of fence, Course easterly and southerly, impracticable to dig pits. Thence I run, S. 40° E. on a true line along East boundary of Sec. 17, and boundary line of Rancho Canon de Santa Ana with same va. Over rough broken land and along fence line. The S.E. cor. to Secs. 17 and Station 11 of Rancho Canon de Santa Ana Land mountainous, Soil 3rd rate.

40.00

At 11 A.M. the needle has returned to its mean place, At the cor. to fractional Secs. 17 and 18, Thence I run, East on a random line on S. boundary of Sec. 18 and boundary line of Rancho Canon de Santa Ana, Va. 14° 29' N. Set temporary $\frac{1}{2}$ sec. cor. To old cor. to Secs. 13, 18, 19, and 24 and station 12 of the Rancho Canon de Santa Ana on West boundary of the Township which is an elder post 3 x 4 ins. marked, T. 3 S., R. 8 W., S. 18 on N.E. S. 19 on S.E. 1 R. 9 W. S. 24 on S.W. and S. 13 on N.W. faces with 3 notches on N. and S. edges post standing firmly in rock and earth mound 2 ft high, $4\frac{1}{2}$ ft. base in cor. of fence, course N. and E. S.W. cor. of house bears N. 20° E. about 18.00 chs. dist. Thence I run, East on a true line on S. boundary of Sec. 18 and Boundary line of the Rancho Canon de Santa Ana with same va. Over broken land along fence. Cor. of fence, course N. and S. Guide 10 lks. wide, course S. Ascend. Spur course S. Descend.

58.40

Set a granite stone 15 x 18 x 6 ins. 10 ins. in the ground for $\frac{1}{2}$ sec. cor., marked $\frac{1}{2}$ on N. face raised a mound of stone 2 ft. high, $4\frac{1}{2}$ ft. base alongside, pits impracticable. Guide 5 lks. wide, course S. Ascend.

9.50

+300 ft.

-250 ft.