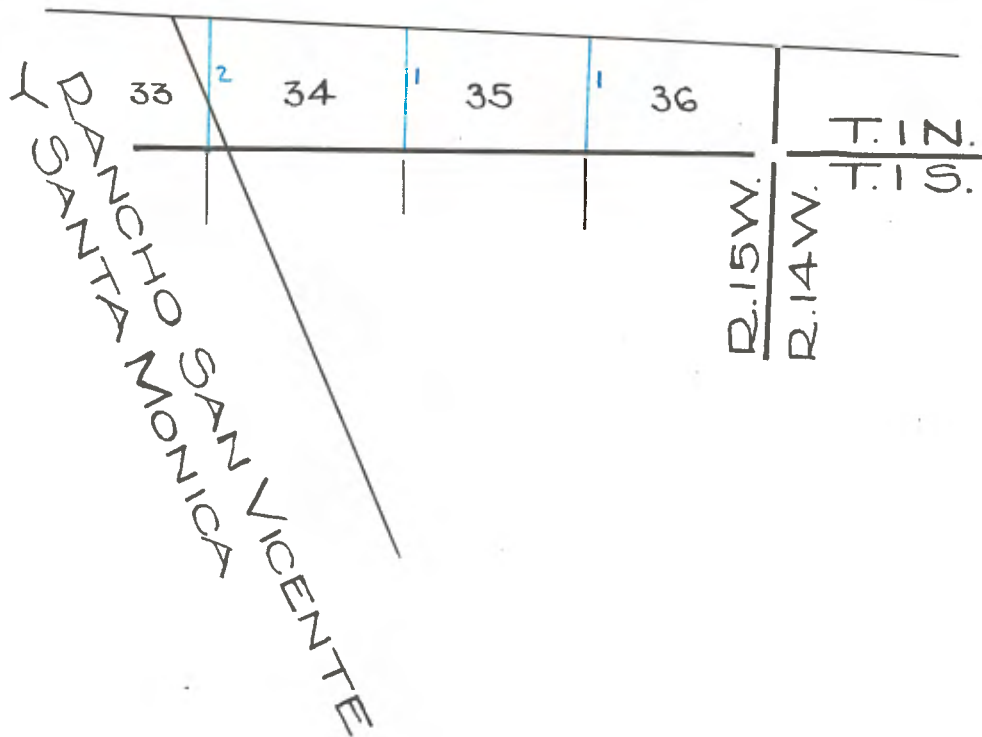


Copied from Photographic Copies
furnished by
U. S. General Land Office,
WASHINGTON, D. C.

Blue, M.F. Reilly - 1895

RANCHO Ex MISSION de SAN FERNANDO



SUBDIVISIONS

TOWNSHIP 1 NORTH, RANGE 15 WEST, S. B. M.

CHAINS:

From the cor. to Secs. 35 and 36 on S. boundary of Tp. which is a sandstone set firmly in the ground
 Marked with 5 notches on W. and 1 notch on E. edges and a stone mound which I rebuild 2 ft. base, 1½ ft. high N. of cor.
 I run,
 North on a true line, bet. Secs. 35 and 36,
 Var. 14° 42' East.
 Descend through dense brush.
 1.05 Cross gulch 4 lks. wide, course E. and Ascend.
 2.75 Top of spur bears N. 60° W. and S. 60° E. and descend.
 7.25 Cross gulch 6 lks. wide, course S. E. and ascend.
 14.75 Top of Ridge bears N. E. and S. W. Fuller's home bears S. 57° E. about 21.00 chs. dist.
 Descend.
 21.45 Cross gulch, 2 lks. wide, course S. 65° W. and over rolling land.
 24.50 Cross gulch 4 lks. wide, course S. W.
 A small orchard and a tract of cultivated land bears W. 300 chs. dist.
 28.50 Leave brushy rolling land enter open ground and ascend.
 36.00 Top of Ridge bears N. W. and S. E. and Descend.
 40.00 Set a sandstone 32 x 20 x 10 ins. 24 ins. in the ground for ¼ Sec. Cor.
 Marked ¼ on W. face,
 From which bears,
 A White Oak, 4 ins. dia. N. 19° W. 17 lks. dist.
 Marked ¼ S. B. T.
 No other tree within limits dug a pit 18 x 18 x 12 ins. S. of stone, 3 ft. dist. and raised an earth mound 1½ ft. high, 3½ ft. base W. of cor.
 42.70 Cross Gulch, 3 lks. wide, course E. and Ascend.
 47.25 Intersect S. boundary of Rancho Ex Mission San Fernando 43 lks. N. 87° W. from corner marked S. F. 9/360 previously set by me and set a lime stone 22 x 14 x 6 ins. 16 ins. in the ground for closing cor. to Secs. 35 and 36, marked,
 C. O. on S. and S. F. on N. faces dig pits crosswise on each line 30 x 24 x 12 in. N. 87° W. 3 ft. and 24 x 18 x 12 ins. S. of stone 7 ft. distant and raised an earth mound 2 ft. high, 4 ft. base S. of cor.
 Cor. set on top of Ridge, bears N. E. and S. W.
 Land mountainous.
 Soil 3rd rate.
 Scattering Oak timber and dense undergrowth of chaparral for S. 28.00 chs.

Dec. 23rd, 1895.

From the cor. to Secs. 34 and 35 on S. boundary of Tp. which is a sand stone set firmly in the ground
 Marked with 2 notches on E. and 4 notches on W. edges and on N. side of which I build a stone mound 2 ft. base, 1½ ft. high,
 I run,
 North between Secs. 34 and 35,
 Var. 14° 33' E.

Ascend.
 10.00 John Lenelli's house bears W. 3.80 chs. dist.
 12.50 Top of spur bears E. and W. and descend.
 14.48 Cross gulch, 8 lks. wide, course W. and Descend.
 17.50 Top of spur bears E. and W. and descend.
 18.60 Cross gulch 6 lks wide, course W. and ascend.
 23.50 Top of spur bears E. and W. and descend.
 24.25 Cross gulch, 6 lks. wide, course W. and Ascend.

SUBDIVISIONS

TOWNSHIP 1 NORTH, RANGE 15 WEST, S. B. M.

- 27.00 Top of spur bears E. and W. and Descend.
 29.25 Cross gulch 6 lks.wide,course W. and Ascend.
 32.75 Top of spur bears E. and W. and Descend.
 35.00 Cross gulch 3 lks wide,course W. and Ascend.
 37.60 Top of spur bears E. and W. and Descend.
 40.00 Set a sandstone 30 x 10 x 8 ins. 22 ins. in the ground for $\frac{1}{4}$ sec.cor.
 Marked $\frac{1}{4}$ on W. face dug pits 18 x 18 x 12 ins. N. and S. of stone,
 3 ft.dist. and raised an earth mound $1\frac{1}{2}$ ft.high, $3\frac{1}{2}$ ft. base. W.of
 cor.
- 41.20 Cross Trail, bears N. 75° E. and S. 75° W.
 42.50 Cross Gulch 3 lks.wide,course S.70° W. and ascend.
 45.30 Top of spur bears N. 15° W. and S.15° E. and descend.
 51.32 Intersect S.boundary of Ro. Ex Mission San Fernando 99 lks. N.87°
 W. from cor., Marked
 S.F. 1/280 previously set by me and set a sandstone 20 x 18 x 3
 ins. 15 ins. in the ground for closing cor.to Sec. 34 and 35,
 Marked,
 C.C.on S. and S.F.on N.faces, dig pits, crosswise on each line,
 30 x 24 x 12 ins. N. 87° W. 3 ft. and 24 x 18 x 12 ins. South of
 stone 7 ft.dist. and raised an earth mound, 2 ft.high, 4 ft.base S.
 of cor.
 Land mountainous.
 Soil 3rd rate.
 Scattering Oak timber and dense undergrowth of Chaparral.
-
- From the cor.to Secs. 33 and 34.on S. boundary of Tp. which is a
 Limestone set firmly in the ground,
 Marked with 3 notches on E. and W. edges with a stone mound which I
 rebuilt alongside previously, I run
 North between Secs. 33 and 34,
 Va. 14° 45' E.
 Ascend along top of Ridge.
- 3.00 Top of Ridge bears N.E. and S. and Descend.
 8.50 Intersect boundary of Rancho San Vicente y Santa Monica 9.00 chs.
 N. 18° 74' W. from closing cor.to Secs.34 previously set by me and
 set a sandstone 24 x 12 x 10 ins. 18 ins.in the ground for closing
 cor. to Secs. 33 and 34,
 Marked,
 C. C. on S. and S.V.S. M. on N. faces, dig pits crosswise on
 each line 30 x 24 x 12 ins. N. 18° 74' W. 3 ft. and 24 x 18 x 12 ins.
 South of stone 7 ft. dist.and raised an earth mound 2 ft.high, $4\frac{1}{2}$
 feet base, S. of cor.
- 15.00 Cross gulch 4 lks.wide,course S.W.and ascend.
 22.00 Top of same Ridge bears N.W. and S.E. and descend.
 30.00 Cross low Sag bears E.and W. and Ascend.
 37.00 Top of same Ridge bears N. 20° E. and S. 20° W. and descend.
 40.00 Set a sandstone 26 x 16 x 6 ins. 19 ins.in the ground for $\frac{1}{4}$ sec.
 cor.
 Marked $\frac{1}{4}$ on W.face,dug pits 18 x 18 x 12 ins. N. and S. of stone 3
 ft. dist. and raised an earth mound $1\frac{1}{2}$ ft.high, $3\frac{1}{2}$ ft.base W.of cor.
- 44.00 Cross head of Gulch,course S.W.and Ascend.
 49.00 Top of spur bears E.and W. and descend.
 55.32 Intersect S.boundary of Rancho Ex Mission San Fernando 169 lks.N.
 87° W.from cor.
 Marked S.F. 5/200 previously set by me and set a sandstone 36 x 18 x 8
 ins. 27 ins.in the ground for closing cor.to Secs. 33 and 34,
 Marked
 C. C. on S. and S.F.on,
 N. Face dig pits crosswise on each line 30 x 24 x 12 ins. N.87°
 W. 3 ft. and 24 x 18 x 12 ins. South of stone 7 ft.dist. and raised
 an earth mound 2 ft. high, $4\frac{1}{2}$ ft.base, S.of cor. Land mountainous.
 Soil 3rd rate. Dense undergrowth of Chaparral. No timber.

M.F.Reilly,
 December 24th, 1895.