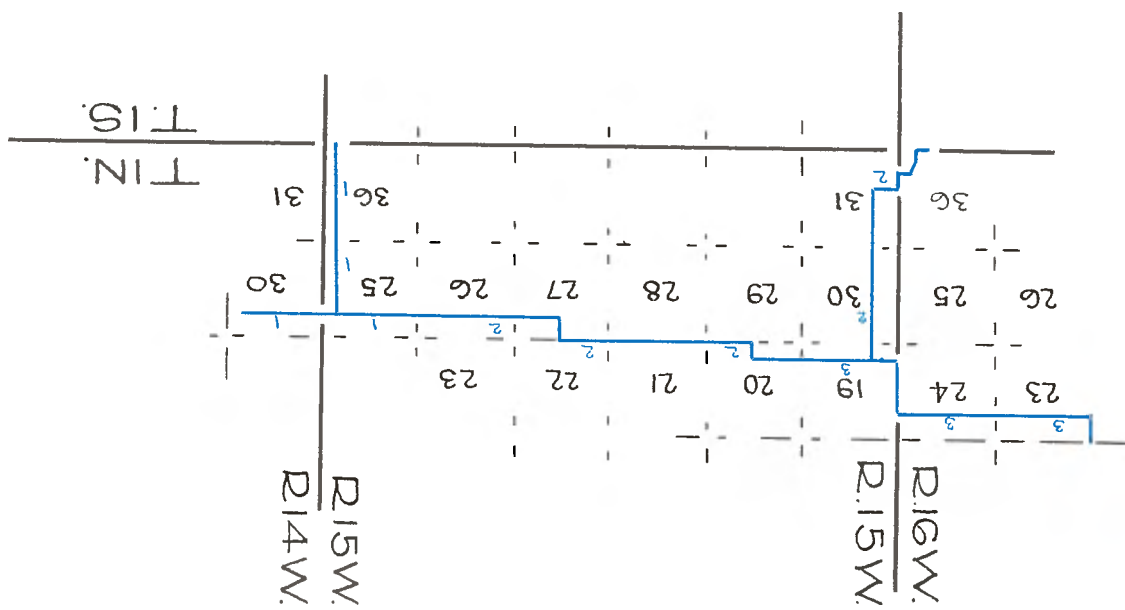


Copied from Photographic Copies
Furnished by
U.S. General Land Office,
WASHINGTON, D. C.



Blue, H. Washington - 1852

LINES NORTH
of

SAN BERNARDINO BASE LINE, THRO. TPS. 1 N., RS. 14 & 15, W.

- WEST
- 18.50 To Branch 8 lks. wide, shallow, course S.E.
 36.50 Crossed Road from Los Angeles to Santa Barbara, course S.20° E.
 43.00 To deep gully 30 lks. wide, course N.E. with a small stream 3 lks. wide.
 57.00 Cross wagon road, course N.E.
 60.50 Descended high bluff.
 61.96 To the E. boundary of T.1 N., R.15 W. being 139 chs. 12 lks. =
 1 mile, 59 chs. 12 lks, N. of the San Bernardino Base Line, at
 which set post, whence bears Willow S.60° E. 45 lks., T.1 N.,
 R.14 W., S. 30, 28 in. dia.
 Willow S.28 W. 78 lks, T.1 N., R.15 W., S.25, 23 in. dia.
- NOTE: From the last post ran through T.1 N., R.15 W., on offset lines as follows:
- WEST 1st mile through T.1 N., R.15 W.
 Variation of the Needle 13° 43' E.
- 1.00 Crossed Branch 5 lks wide, course N.E.
 NOTE: This Branch was thro a deep gully, banks about 10 feet high.
 10.00 Set temporary stake at -A-, and ran the most eligible point found
 to reach the San Bernardino Base Line
- SOUTH From point -A-
 1.70 To Branch, 5 lks. wide, course N.E.
 6.50 Cross Road, course N.E. Not much traveled.
 14.00 Cross another road, nearly E. nearly overgrown.
- 23.00 To foot of high hills, general course nearly N 85 E, Prairie.
 45.00 To growth of small Walnut.
 80.50 To thick bushy scrub hills.
 112.30 To top of high hill.
 116.65 Set charred stake & Sycamore charred post on S. side of hill, marked
 T. 1 N., R. 15 W., S. 36, from which bears
 Swamp dogwood S 84 E, 38 lks, 5 in. dia.
 " " N 38 W, 37 lks, 6 in. dia.
 both marked with the same numbers as the post.
- NOTE: Finding it entirely impracticable to proceed farther to the South-
 land in any direction from this point, owing to the ruggedness of
 the mountains, returned to temporary stake at -A-, 10 chs. West of
 Range line between Rs. 14 and 15, and
- WEST Continued W. thro T.1 N., R.15 W.
 53.26 To small Branch 4 lks. wide, (in a deep side gully), course S.E.
 80.00 Set Temporary stake 1 mile W. of Range Line between Rs. 14 and 15,
 2nd mile thro T.1 N., R.15 W.
 73.00 From level to rolling prairie.
 80.00 Set Temporary mile stake--
 3rd mile thro T.1 N., R.15 W.
 40.00 Stake, Jan'y, 7th, 1853, Thence, ran,
- NORTH In Prairie hills.
 10.00 To level rick prairie.
 20.88 Set stake, thence continued the off set
- WEST Lines due West on 3rd mile.
 40.00 Set 3rd mile stake, being 3 miles W. of Range Line between 14 and 15,
 4th mile thro, T.1 N., R.15 W.
 80.00 Set 4th mile stake,
 5th mile thro. T.1 N., R.15 W.

LINES NORTH
of
SAN BERNARDINO BASE LINE, IN T. 1 N., R. 15 W.

- 26.00 Cross ravine dry (runs a short distance above) 10 lks.wide, course N. to hills.
- NOTE: At this point ascertained the variation of the Needle on the Night of the 8th January, 1853, by Celestial observation, taking the North Star on the Meridian-found the variation to correspond with my lines, run thro' R.15 W., viz: 13° 43' E.
- 36.00 Set Walnut stake in Walnut hills.
NORTH thence due North.
- 10.00 From Black Walnut hills to wavy prairie.
- 20.00 Set stake in prairie being 2 miles 20 chs N. of the San Bernardino Base Line, thence
- WEST 5th mile thro. T.1 N., R.15 W., continued
- 44.00 Set 5th mile stake.
6th mile thro T.1 N., R.15 W.
- 6.00 To high walnut hills, estimated height 200 feet.
- 38.00 From Walnut hills to prairie Valley.
- 47.50 Crossed dry ravine, gully about 10 feet deep, 30 lks.wide, course N. to wavy prairie.
- 56.00 Set temporary stake at point -A- being 5 miles, 56 chains W. of Range line between R's. 14 and 15 W. & 2 miles 20 chs. N. of the San Bernardino Base Line and E. margin of prairie, thence ran due S. thro. prairie
- SOUTH 21.50 Crossed dry ravine (runs above) 10 lks.wide, course S.E.
- 37.00 To bushy high hills, mountain range.
- 51.00 Cross small Branch, 3 lks.wide, course N.W.
- 80.00 Set stake, 8 January, 1853.
2nd mile.
- 2.60 Crossed Branch, pure water, 3 lks.wide, course N.W.
- 40.50 Set stake on top of high hill and compelled to run (owing to rough hills) due W.
- WEST Surface rough.
- 24.00 To Range Line between Rs. 15 and 16 at which point set a stake, being 59 chs. 50 lks. North of the San Bernardino Base Line, (the Range line running N. passes thro. a range of hills, which cannot in my opinion be run and measured with a reasonable degree of accuracy) from the last stake set, ran due South.
- SOUTH on line between Rs. 15 & 16.
- 21.00 Set stake, and compelled from extreme ruggedness of the mountains to run due
- WEST Thence over a very narrow ridge
- 3.00
- S.10°W.
- 20.00 Thence, due
- SOUTH
- 18.80 To San Bernardino Base Line 6 chs. 47 lks.W. of corner to Rs. 15 & 16
W,
Thence along said line West.
- 1.00 Cross dry sandy ravine, runs above and below, 20 lks.wide, general course apparently due South.
- 1.30 Set Walnut post being in a narrow pass of the Mountain 7 chs.77 lks. W.of S.E.corner of T.1 N., R.16 W. (The Township corner being in rough high hills, could not be reached) whence bears,
Sycamore N. 2° 30' E. 43 Lks. 21 In. Dia.
Sycamore S. 84 W. 154 lks. 12 in. dia.
Post and Bearing trees marked T.1 N., R.16 W., S.36,
T.1 S., R.16 W., S.1,
The San Bernardino Base Line could not be continued W. with accuracy, was therefore compelled to return to a stake at -A-, 5 miles, 56 chs. W. of Range line between Rs.14 & 15, and

LINES NORTH
of
SAN BERNARDINO BASE LINE, THRO. T.1 N., R. 16 W.

WEST continued W. on 6th Mile, thro. T.1 N., R.15 W.
80.00 Set Walnut stake on W.boundary of T.1 N., R.15 W. from which
bears Black Walnut S.42° 30' W. 130 lks. 10 in. dia., marked
T. 1 N., R.16 W., Sec. 24, thence, due
NORTH On Range Line, between 15 and 16,
36.50 Leave Walnut hills to level rich prairie.
40.00 Set charred stake and post in a mound of earth marked T.1 N., R.15
W., From this post - Mexican Rancho, name unknown, bears N.61° E.,
Sec. 19, and T.1 N., R.16 W., Sec.24, from which the centres of 4
pits bear N. 10 lks, S. 10 lks. E.10 lks., W.10 lks. being 2 chs.,
60 lks., N. of the San Bernardino Base Line.
Thence along the Valley thro. T.1 N., R.16 W. due W. thro.
prairie,
Variation of the Needle 13° 43' E.

WEST: 1st mile thor, T.1 N., R.16 W.
17.00 To dry Ravine, course N.E.and up it.
19.00 Leave Ravine, Left bend
20.00 Cross same Ravine, course N.E.
70.00 From timbered(scattering post oak) to open prairie.
80.00 Set 1st mile stake.
2nd mile thor. T.1 N., R.16 W.

64.00 Crossed dry Ravine, obliquely banks about 4 feet high,150 lks.wide,
course Northwardly.

70.00 From level to wavy open prairie.
80.00 Set 2nd mile stake being 2 miles E.of Range line between 15 & 16,
thence,
NORTH Thro. good wavy open prairie.
20.00 Set stake being 3 miles or 240 chs. N. of the San Bernardino Base
Line.
From this last stake a beautiful Rancho, known as the "Mission of
San Fernando bears N. 29° 30' E. thence,

.