

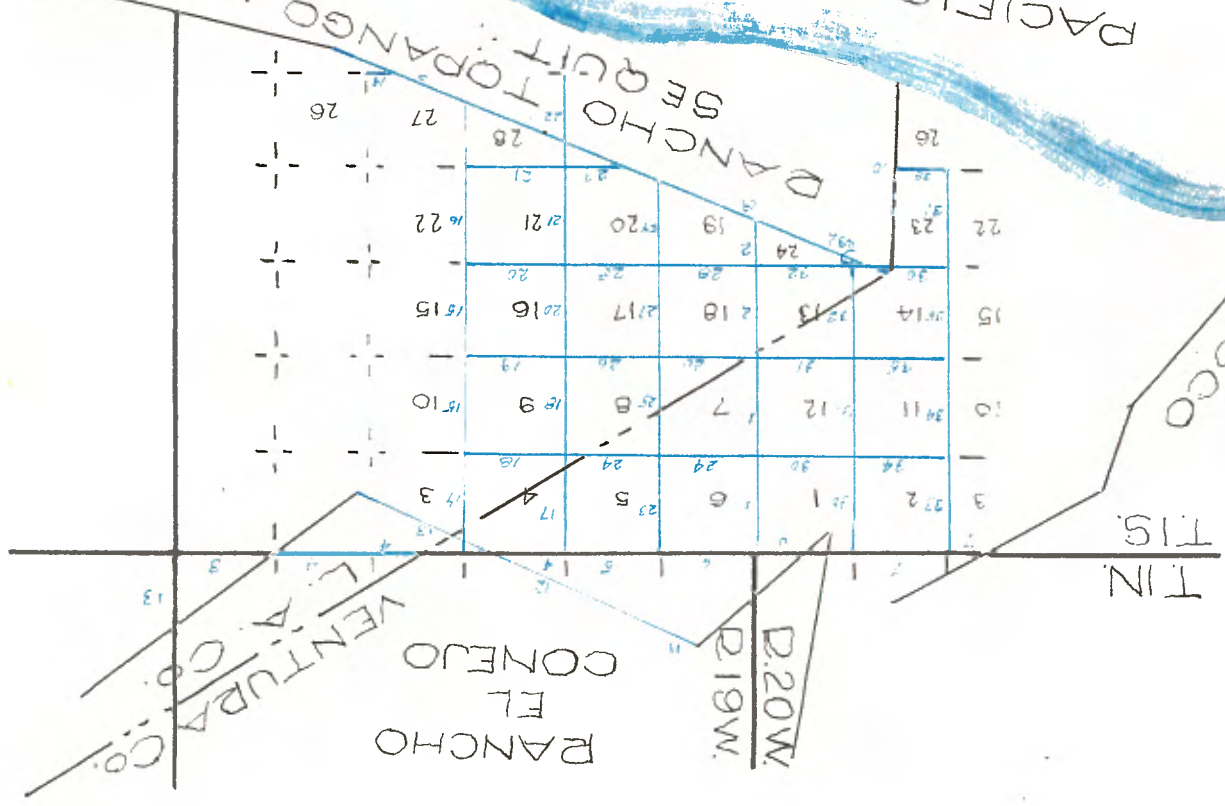


OCEAN

PACIFIC

BANCHO TOPANGO MALIBU SEQUIT

RANCHO GUADALISCO



TIN

D.20W.  
D.19W.

RANCHO EL CONEJO

VENTURA CO.  
L.A. CO.



(SIGNED) Frank E. Barker  
Office Cadastre Engineer.

I, Frank E. Barker, Office Cadastre Engineer, do hereby certify that the annexed transcript of field notes of certain sections in townships 1 S., R. 19 and 20 West S. B. N., with the bench lines in said townships, and portion of W. Bdy. of T. 1 N. R. 18 W., S. B. N., survey of which was executed by J. H. Glover DS., under contracts dated November 7, 1896 and July 2, 1896, is a true and literal exemplification of the said field notes which are on file in this office.

San Francisco, California,  
JULY 10, 1926

Department of the Interior  
General Land Office,  
Public Survey Office

W. Hwy. T. 1 S., R. 19 W., S. B. N.

By James R. Glover, Deputy Surveyor, under

His contract No. 137 of November 7, 1896

From the corner to township 1 N., and 1 S., R.  
19 and 20 W.

I ran  
a true line between sections 1 and 6  
Descend from corner which is on top of spur, bears E.  
and W.

5.00

19.75

40.00

Set a sandstone 24 x 10 x 8 ins. in the ground for  
a section corner marked § on N. face and raised a mound of  
stone 2 feet base 1 1/2 feet high W. of corner.  
Pls impracticable.

49.10

Corner set 125 feet below top of ridge.  
Gulch 15 lks. wide 80 feet below § section corner  
Course W. Ascend

73.00

Top of ridge 200 feet above Gulch bears E. and W.  
Descend.

80.00

Set a sandstone 30 x 10 x 8 ins. 22 ins. in the ground for  
corner to sections 1, 6, 7, and 12, marked with 1 notch on  
N. and 5 notches on S. face and raised a mound of stone 2 1/2  
feet base 1 1/2 feet high W. of corner.  
Pls impracticable.

10.00

Gulch 10 lks. wide 75 feet below section corner  
Course W.  
Ascend

20.25

Top of ridge bears N. and W. 150 feet above Gulch  
Descend

40.00

Set a sandstone 20 x 10 x 10 ins. 15 ins. in the ground  
for § section corner marked § on N. face and raised a  
stone mound 2 feet base, 1 1/2 feet high W. of corner.  
Pls impracticable.

59.94

Corner 25 lks. wide 200 feet below top of ridge  
Course S. 45° W.  
Ascend

79.10

Top of ridge 150 feet above canon bears E. and W.  
Descend.

80.00

Set a sandstone 30 x 12 x 10 ins. 22 ins. in the ground  
for corner to sections 7, 12, 13 and 18 marked with 2  
notches on N. and 4 notches on S. face and raised a mound  
of stone 2 1/2 feet base 1 1/2 feet high W. of corner.  
Pls impracticable.

Restoring oak timber.  
Soll 3rd rate.  
Land mountains.  
Pls impracticable.

35.93 Interest boundary line of Hancock Township, Madison  
 County, N. 60° W. from the 5 1/2 mile  
 corner on boundary which is a sandstone 12 x 12 x 5  
 feet above ground, previously set by M. and set a  
 sandstone 12 x 14 x 5 feet. In the ground for  
 closing corner to township 1 S., R. 19 and 20 W.  
 marked G. O. on N. with 6 grooves on N. and W. faces  
 from which bears  
 a like oak 12 in. diam. N. 45° W. 28 lbs. dist. marked  
 I. 1 S. N. 20 W. 24 B 1  
 No other trees within limits  
 Dig pits 30 x 24 x 12 in. excavated on each line  
 N. and W. of stone 4 feet and N. of stone 8 feet dist.  
 and raised a mound of earth 5 feet base 2 1/2 feet high  
 N. of corner.  
 Land monuments

17.65 Descend.  
 Gully 15 in. wide 100 feet below top of spur  
 Course N. 60° W.  
 14.50 Ascend.  
 Top of rocky spur 150 feet above gully bears N.  
 80° W. and S. 20° E.  
 6.35 Descend.  
 Gully 10 in. wide 75 feet below section corner  
 Course S. 60° W.  
 South on true line between sections 19 and 24

50.00 Descend.  
 Set a sandstone 28 x 24 x 12 in. 21 in. in the ground  
 for corner to sections 17, 18, 19, and 24, marked with 3  
 notches on N. and S. edges  
 Dig pits 18 x 18 x 12 in. in each section 5 1/2 feet dist.  
 and raised on earth mound 4 feet base 2 1/2 feet high W. of  
 corner  
 Land monuments.  
 Bolt 3rd rate.  
 Notching Oak timber  
 Dense undergrowth of oaks, etc.  
 Monuments land 50.00 chain

65.50 Ascend.  
 Top of ridge 100 feet above gully bears N. 50° E.  
 and S. 20° W.  
 42.84 Descend.  
 Gully 10 in. wide 100 feet below top of ridge  
 Course S. 45° W.  
 40.00 Descend.  
 Set a sandstone 24 x 16 x 8 in. 18 in. in the ground  
 for 1/2 section corner marked 4 on W. face and raised a  
 mound of stone 2 feet base 1 1/2 feet high W. of corner.  
 Pits impracticable.  
 21.00 Ascend.  
 Top of ridge 200 feet above gully bears N. and S.  
 4.16 Gully 8 links wide Course S. 50° W.  
 Descend through dense oaks, etc.  
 South on a true line between sections 17 and 18

W. Boundary T. 1 S. R. 19 W., 5th

Dense undergrowth of oaks, etc. Monuments land, 50.00 chain

Selling oak timber.  
Dense undergrowth of chaparral.

December 5, 1896

Part 20  
Vol. 363

Field notes of the San Bernardino Base Line  
along north boundary of Township 1 South Range  
19 and 20 West San Bernardino Meridian, California  
by James H. Glover, Deputy Surveyor,  
Under his contract No. 137 dated November 1, 1896

December 3, 1896 at 8 h am. AM 1. m. t. I set out  
the 0' N. on the 1st. are 20° 12' S. on the decl. are  
and determine a true meridian with the solar at the corner  
to Township 1 N and 1 S R. 18 and 19 W, thence from the  
corner to Township 1 N. and 1 S., R. 18 and 19 W., which  
I established under my contract No. 129 of July 2, 1896 and  
is a sandstone 9 x 12 x 10 inches above ground finally set by  
me under instructions dated September 7, 1896 I run  
West between section 1 and 36  
Descend through dense chaparral

3.45

Grass prairie of Canada Lobe, 15 lks. wide  
Course north 60 feet below corner and ascend  
Top of rocky spur trends north 100 feet above canon and  
descend  
Garnett's house bears S 64° W.  
Enter Canada Lobe 50 lks. wide  
Course N. 80° E. 130 feet below spur  
Leave Canada Lobe and ascend mountain  
Difference between measurement of 40.00 chs. by two sets  
of chainmen is 6 lks. positions of middle point  
by 1st set 40.05 chs. by 2nd set, 39.97 chs., the mean  
of which is

7.25

Top of rocky spur trends North 100 feet above canon and  
descend  
Garnett's house bears S 64° W.  
Enter Canada Lobe 50 lks. wide  
Course N. 80° E. 130 feet below spur  
Leave Canada Lobe and ascend mountain  
Difference between measurement of 40.00 chs. by two sets  
of chainmen is 6 lks. positions of middle point  
by 1st set 40.05 chs. by 2nd set, 39.97 chs., the mean  
of which is

17.00

Set a sandstone 36 x 18 x 12 ins. 27 ins in the ground  
for 4 section corner marked S 0° on N. face and  
trained a mound of stone 2 feet base 1 1/2 feet high N.  
of corner.  
This impracticable, about 75 feet above canon  
Garnett's house bears S. 50° E.  
Top of ridge bears NW and SE 400 feet above corner  
and descend.

67.75

Difference between measurements of 80.00 chs. by  
two sets of chainmen is 16 links position of middle  
point!  
By 1st set 79.92 chs.  
By 2nd set 80.08 chs., the mean of which is

80.00

Set a sandstone 22 x 16 x 12 ins in the ground for  
corner to sections 1, 2, 35, and 36 marked S 0 on north,  
with 1 notch on E. and 5 notches on W. faces and raised a  
mound of stone 2 feet high 1/2 feet base N. of corner.  
This impracticable 250 feet below ridge.  
Land broken and mountainous  
Soil 3rd rate  
Lumber oak  
Dense undergrowth of chaparral.

Interest boundary of Rancho El Conejo at a point 13.44  
 chm. dist. S. 75° 05' E. from corner K. O. 2 N. and 14  
 a sandstone 24 x 12 x 10 ins. set firmly in the ground with  
 a sandstone 26 x 12 x 11 ins. 19 ins. 19 ins.  
 in the ground for closing corner to fractional sections 4  
 and 33 marked S. O. on N. O. on E. and raised a monument of stone  
 and 33 marked S. O. on N. O. on E. and raised a monument of stone

50.00  
 47.00 Top of spur trends west and descent  
 40.00 Set a blank post on Rancho for § section corner  
 28.40 Cross dry creek 100 lks. wide course NW. and ascend  
 Descend  
 West between sections 4 and 33

Dense undergrowth of chaparral.  
 Soil 3rd rate.  
 Land broken and mountainous  
 and 34.  
 Set a blank post in Rancho for corner to sections 3, 4, 33  
 Top of ridge bears NW and SE. and descend  
 80.00  
 70.00  
 40.00 Set a blank post in Rancho for § section corner  
 34.00 Cross gully 15 lks. wide.  
 5.10 Top of spur trends N. W. and descend  
 Ascend  
 West between sections 3 and 34

Dense undergrowth of chaparral.  
 Soil 2nd and 3d rate.  
 Land broken and mountainous  
 Corner set in gully Course NW  
 34, and 35.  
 Set a blank post in Rancho for corner to sections 2, 3,  
 descend.  
 80.00  
 64.00 Top of ridge bears N and S. 300 feet above canon and  
 40.00 Set a blank post in Rancho for § section corner  
 10.00 Head of canon course SE. and ascend  
 descend  
 9.05 Top of spur trends SE. 50 feet above O. O. corner and  
 Ascending  
 fits impracticable. Thence in Rancho El Conejo  
 high E. of corner.  
 on E. trees and raised a mound of stone 2 feet base 1 1/2 ft.  
 to fractional sections 2 and 35 marked S. O. on N. and O.  
 stratum dated September 7, 1896 and set a sandstone  
 10 x 10 ins. firmly set in the ground by me, under in-  
 chaine dist. from corner § N O and 18 a sandstone 12 x  
 Interest Rancho El Conejo at a point S. 55° 57' W 18.95  
 ascend.  
 6.34  
 0.50 Cross branch of Lobe Canon 10 lks. wide Course SE. and  
 descend  
 West between sections 2 and 35

SAN BERNARDINO PASS through Range 19 West

December 3, 1896

Dense undergrowth, charred from the first 20 yrs.  
Timber, Oak.

Soil 3rd rate

Land broken and mountainous

At the foot of a large boulder 30 feet below spur  
Pits impracticable.

corner.

raised a mound of stone 2 feet base 1 1/2 feet high N. of  
north with 5 notches on E. and 1 notch on W. faces and  
for corner to sections 5, 6, 31, and 32, marked S 0 on  
set a sandstone 24 x 14 x 10 ins. 18 ins in the ground  
By 2d set, 79.93 cms. the mean of which is  
By 1st set 80.07 cms.

80.00

sets of chainmen is 14 lks. position of middle point  
Differences between measurements of 80.00 cms. by two

75.50

Top of rocky point trends south 80 feet above gully  
course south 100 feet below spur and ascend

61.50

cross gully 10 lks. wide

Top of spur trends S 20 E 50 feet above sag and descend  
cross low sag 50 feet below corner and ascend

48.00

45.00

Pits impracticable.

a mound of stone 2 feet base 1 1/2 feet high N. of corner  
for 1 section corner marked S 0 1/2 on N face and raised  
set a sandstone 18 x 10 x 9 ins. 12 ins in the ground  
By 2d set is 79.96 cms. the mean of which is  
By 1st set is 40.04 cms.

40.00

of chainmen is 8 lks. position of middle point  
Differences between measurements of 40.00 cms. by 2 sets

descent.

Top of ridge bears N. and W 250 feet above corner and  
and leave flat and ascend.

38.00

Leave timber and enter dense charred bears N and S.  
Live oak and glycocole on creek.

20.50

of water in name, 40 feet below corner.

cross corner 15 lks. wide course S. 60° E. small stream  
Enter small flat bears N and E.  
Descend over broken land.

17.48

13.20

West between sections 5 and 32

Dense undergrowth of charred.  
Timber, oak, and glycocole on creek

Soil 3rd rate.

Land broken and mountainous

Pits impracticable.

mound of stone 2 feet base 1 1/2 feet high N. of corner  
N with 4 notches on E and 2 notches on W. faces and raised a  
for corner to sections 4, 5, 32, and 33, marked S 0 on  
set a sandstone 22 x 12 x 10 ins 16 ins in the ground  
By 2d set, 79.91 cms. the mean of which is  
By 1st set 80.09 cms.

80.00

of chainmen is 18 lks. position of middle point.  
Differences between measurements of 80.00 cms. by 2 sets

66.20

cross grade top 40 lks. wide, course N. and ascend  
Pits impracticable.

2 feet base, 1 1/2 feet high N. of corner.

SAN BERNARDINO BASE through Range 19 West

SAN BERNARDINO Base through Range 19 West

West between sections 6 and 11 ascending.

5.50 Top of spur trends south 50 feet above corner and

14.00 cross Elich 10 lks. wide course S. 60° E 100 feet below spur and ascend.

Difference between measurements of 40 ans. by 2 sets of chainmen is 8 lks. position of middle point

By 1st set, 39.96 ans. By 2nd set, 40.04 ans. the mean of which is

40.00 get a sandstone 24 x 6 ins in the ground for

section corner marked 8 0 7 on N. face and raised a mound of stone 2 feet base 1 1/2 feet high N. of corner.

Plite impracticable. Corner on top of spur trending SE. 75 feet above Elich

53.05 cross canon 100 lks. wide course S. 80 E 50 feet below corner (small stream of water) and ascend.

66.00 Top of spur trends north 80 feet above canon and descend cross Elich 15 lks. wide

74.78 course N. 45 E. 60 feet below spur and descend Difference between measurements of 80.00 ans. by two sets

of chainmen is 20 lks. position of middle point

By 1st set 79.90 ans. By 2d set 80.10 ans. the mean of which is

80.00 get a sandstone 22 x 18 x 6 ins. in the ground for

corner to Township 1 N. and 1 S., R. 19 and 20 W. marked

8 0 on N with 6 notches on edge and raised a mound of stone 2 feet base 1 1/2 feet high N. of corner.

Plite impracticable on top of rocky spur trending NE. 90 feet above Elich.

Land broken and nonuniform. Both 1st rate Timber, Oak. Dense undergrowth of chaparral.

December 4, 1896

December 4, 1896 at 8 P.M. I.M.T. I set off the on the 1st etc. 22° 19' S. on the day. etc and determine a true meridian with the solar at the corner to Township 1 N and 1 S. R. 19 and 20 W. Longitude 118° 55' West These west between sections land 50 ascend over rocky bluffs south of rocky butte 75 feet high Top of divide bears N. and S. 750 feet above corner. Difference between measurements of 40.00 ans. by two sets of chainmen is 6 lks., position of middle point

40.00

31.00  
32.00

80.00

74.78  
66.00

53.05

40.00

14.00

5.50



At this point of intersection chain agrees. Interest Range 11 course 1/2 lks. N. 62° 52' E. of corner of 4 / 160 c. described by me in my book of survey and set a sandstone 30 x 16 x 7 lvs 22 in the ground for closing corner to fractional sections 3 and 34 marked B 0 on north. Descend West between sections 3 and 34

20.00

Descend  
Top of ridge bears N. and S. 100 feet above gulch and  
course S. 30 west 20 feet below corner and ascend  
Gulch 20 lks. wide.  
By 1st set 60.04 chs. the mean of which is  
By 2d set 79.96 chs. the mean of which is  
set a sandstone 24 x 15 x 6 lvs 18 in the ground for  
corner to sections 2, 3, 34, and 35 marked B 0 on N with  
2 notches on E and 4 notches on W. edges and raised a  
mound of stone 2 feet base 1 1/2 feet high N. of corner.  
Plate impracticable  
Land broken and mountainous  
Soil 3rd rate  
Dense undergrowth of chaparral.

60.00

Descend  
Top of ridge bears N. and S. 100 feet above gulch and  
course S. 50 west below corner and ascend  
Gulch 10 lks. wide.  
Plate impracticable 150 feet below ridge  
mound of stone 2 feet base 1 1/2 feet high N. of corner.  
set a sandstone 16 x 14 x 12 lvs 10 in the ground  
for 4 section corner marked B 0 1/2 on N face and raised a  
mound of stone 2 feet base 1 1/2 feet high N. of corner.  
By 2d set 39.94 chs. the mean of which is  
By 1st set 40.06 chs.  
of chainmen 12 lks. position of middle point  
Difference between measurements of 40.00 chs. by two sets  
descend through dense chaparral.  
Top of ridge bears N and S. 100 feet above gulch and  
ascend on south side of ridge through burned chaparral  
West between sections 2 and 35

76.50

49.96

40.00

22.70

Descend  
Top of ridge bears N and S. 200 feet above gulch and  
course S. 30 west 20 feet below corner and ascend  
Gulch 20 lks. wide.  
By 1st set 60.05 chs.  
By 2d set 79.95 chs. the mean of which is  
marked a boulder 2 1/2 x 1 1/2 feet in place with a cross  
(x) at exact corner point for corner to sections 1, 2, 35,  
and 35 with 1 notch on E and 5 notches on W. edges and  
raised a mound of stone 2 feet base 1 1/2 feet high N. of corner.  
Plate impracticable. 75 feet above gulch  
Land broken and mountainous  
Soil 3rd rate  
Dense undergrowth of chaparral.

60.00

78.54

64.00

40.75

SAN BERNARDINO BASE THROUGH RANGE 19 WEST

109.42  
 102.94  
 94.92  
 69.42  
 57.42  
 29.42

Set a sandstone 15 x 12 in 10 in the  
 top of spur bench N and S. Descend.  
 6 in. wide course N. 45° W ascend.  
 This is the true line  
 raised a stone mound 1/2 foot high N.E. of corner  
 No other trees within limits  
 No. 1 N 5 N 1  
 1/2 in on S and  
 5 in on N. Trace from which bench  
 1/2 in on S and  
 for 5 mile corner on line marked  
 Set a sandstone 14 x 14 x 12 in 9 in in the ground  
 course S ascend  
 Azkolo bench 15 in. wide 400 feet below corner No. 11  
 This is the true line  
 2 foot high N.E. of corner  
 1/2 in on N. Trace and raise a mound of stone 3 foot base  
 1/2 in on S and  
 1/2 mile corner on line marked  
 Set a sandstone 16 x 8 x 6 in 11 in in the ground for  
 N 68° 49' E. on a true line along boundary Descend  
 This is the true line  
 This is the true line  
 foot base 1/2 foot high  
 described by the Surveyor General, I rebuilt mound 6  
 which is a mound of stone on top of a sharp peak, as  
 remains alive at a corner No. 11 on the said boundary  
 I set temporary corners at every 40 chains and at 469.42  
 I previously returned it.  
 the angle which I found would run the true line when  
 that I return same false and on this random run on  
 The discrepancy in the course of this line is so great  
 N. 68° 49' W. on a random line along boundary  
 I run  
 bench previously described.  
 from corner No. 10 on boundary of No. Toronto N. 11

By James R. Glover Deputy Surveyor under his contract  
 No. 127, dated November 7, 1896  
 through T. J. R. N. 19 & 20 N. 11 S. 11 N  
 No Toronto N. 11 S. 11 N  
 Boundary of Boundary line of  
 Range 15  
 Same Vol.

December 4, 1896

Dense undergrowth of spruce, fir,  
 100 ft. high  
 land broken and mountainous  
 This is the true line  
 of stone 2 foot base 1 1/2 foot high N of corner.  
 6 on N. with 3 grooves on E. Trace and raised a mound

RAN BERNARDINO BARR THROUGH RANGE 19 WEST