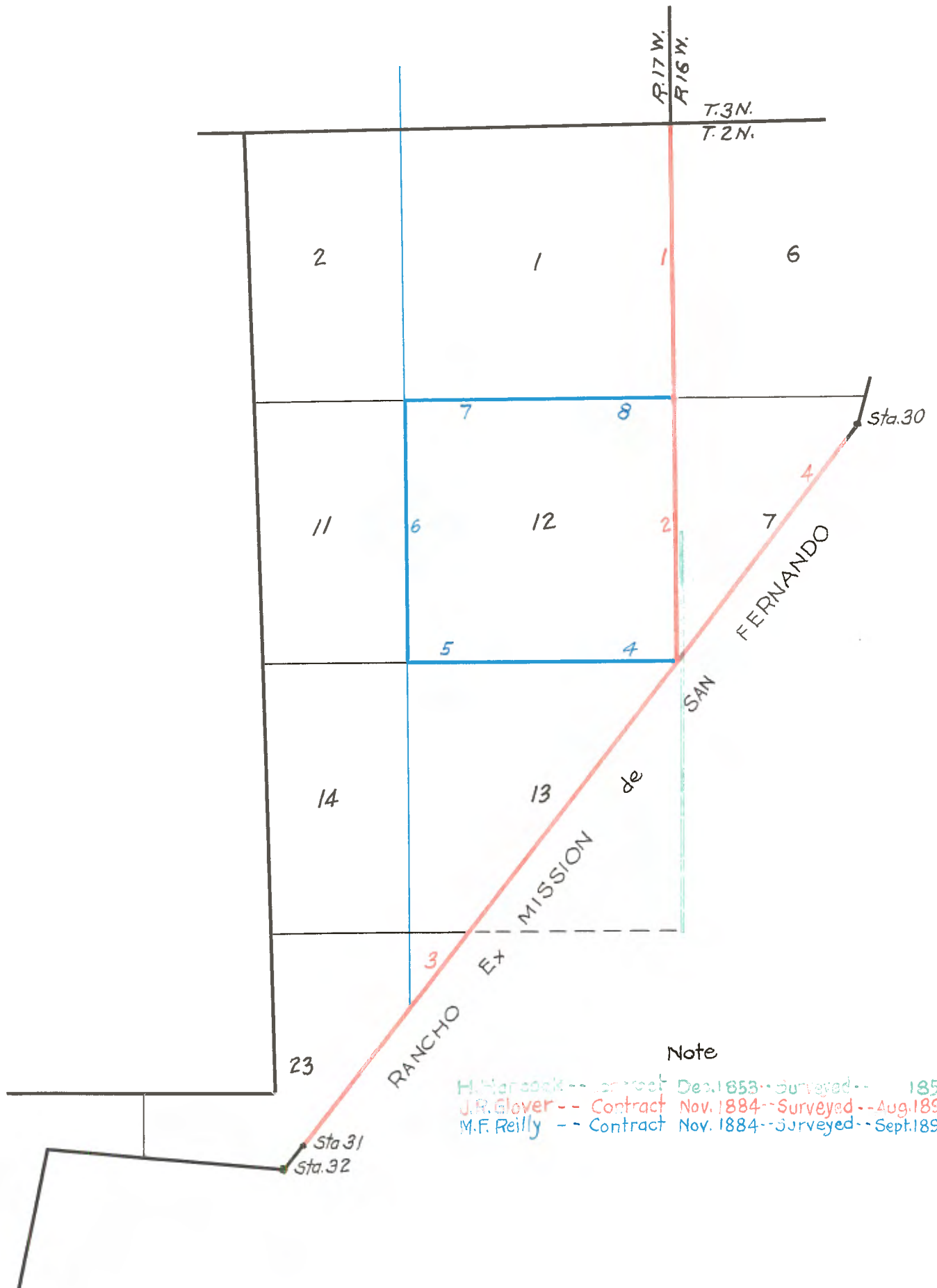


Copy of Government Field Notes
 Loaned to County Surveyor
 By
 H. G. Graves,
 Chatsworth, Calif.
 March 31, 1927.



Note

H. Harbeck -- Contract Dec. 1853 -- Surveyed -- 1854
 J.R. Glover -- Contract Nov. 1884 -- Surveyed -- Aug. 1895
 M.F. Reilly -- Contract Nov. 1884 -- Surveyed -- Sept. 1895

Section 12

T. 2 N. R. 17 W., S.E.M.

Henry Hancock, 1853
J. H. Glover, 1854
M. F. Heilly, 1854

Part 14
Vol. 273

East Bdy. Sec. 12, T. 2 N., R. 17 W., S.B.M.

By Henry Hancock DS., under contract of Dec. 31, 1853

On West Boundary T. 2 N. R. 16 W.

On West Boundary of Section 16

xxxx

80.00 Set section post and charred stake in mound, corner of
Sections 7, 12, 13 & 16 with trench and pits as per
instructions.

On West boundary of Section 7

25.06 Live Oak 6 inches diameter

40.00 Set quarter section post at base of mountain from
which bears a black oak 12 inches diameter S. $2\frac{1}{2}^{\circ}$
W. 155 links

a black oak 10 inches diameter S.E. 153 links

do. SW. Corner of granite boulder 50 feet high
and 60 feet thick S. 32 East 39 lks. dist.

I find it impracticable to extend the line any farther

East Bdy. Sec. 12, T. 2 N. R. 17 W. S.B.M.

By J. R. Glover DS
Contract of Nov. 20, 1884

Part 15
Vol. 128

From cor. to Tps. 2 & 3 N. Rs. 16 & 17 W., x x

South on true line between Sections 1 and 6

Lat. $34^{\circ} 07'$ N. Va. $14^{\circ} 30'$ East

Descend

x x

80.00 Set post 4 ft. long 4 ins. square with marked stone
12 ins. in ground for cor. to Secs. 1, 6, 7 & 12 marked
T. 2 N. S. 6 on NE.
R. 16 W. S. 7 on SE.
R. 17 W. S. 12 on SW and
S. 1 on NW faces with 1 notch on N. and 5 notches on

S. edges and raised a stone mound around post
Pits impracticable.

South on a true line between Sections 7 and 12

Va. 14° 30' East

Descend

6.00 Enter valley
12.00 Leave valley bears E. and W. Ascend.
17.00 Top of ridge bears E. and W. descend
28.50 Cross road bears E. and W.
36.00 Cross road bears N. 80° E. and S. 80° W.
37.00 Cross gulch 6 lks. wide Course S. 80° W. and ascend
40.00 Set a post 3 ft. long 3 ins. square 12 ins. in the ground
for 1/4 sec. cor. marked 1/4 S. on W. face from which bears
a Live Oak 16 ins. dia. S. 27 $\frac{3}{4}$ ° W. 233 lks. dist. marked
 $\frac{1}{4}$ S B T
No other tree within limits
Dug a pit 18 x 18 x 12 ins. N. of post 5 $\frac{1}{2}$ ft. dist. and
raised an earth mound 1 $\frac{1}{2}$ ft. high 3 $\frac{1}{2}$ ft. base around post
40.85 Cross fence bears E. and W. Enter County road
bears N. & S. and along same.
80.00 The true point for cor. to Secs. 7, 12, 13 & 18
falling in center of County road. I sunk a sandstone 14
x 12 x 12 marked with 2 notches on E. and 4 notches on S.
edges at this point and at point 39 lks. due W. of cor.
set a post 4 ft. long 4 ins. square with marked stone 12
ins. in the ground for witness cor. to said sections marked
W CT 2 N S 7 on NE
R 16 W S 18 on SE
R 17 W S 13 in SW and S 12 on NW faces with 2 notches
on N and 4 notches on S edges, and raised a stone mound
around post Pits impracticable.
Land broken & mountainous for 40 chs.

Remainder level & rolling

Soil 2nd & 3rd rates

Scattering Oak timber & dense undergrowth of Chaparral.

Bdy. Lines of Ro. San Fernando
Through Tp. 2 N R 17 W. SBM

Part 8
Vol. 128

J. R. Glover DS. Contract of Nov. 20, 1854

From Station No. 30 on NW Boundary line of Rancho San
Fernando X X

South 38° W along the boundary of a random line

Va. $14^{\circ} 30'$ East

273.63 To a point 9 lks. N. 52° W. from Station No. 31 which
is a post set firmly in the ground marked SF on SE. face
Sta. 31 with a stone mound which I rebuild around post

Aug. 5th & 6th 1895

Thence

N. $35^{\circ} 59'$ E. on a true line along boundary.

Va. $14^{\circ} 30'$ East

Descend

- 4.63 Cross gulch 20 lks. wide. Course S. Ascend
- 28.63 Top of spur bears NW and SE and descend.
- 57.85 Cross gulch 10 lks. wide Course S. and ascend.
- 63.23 Top of round hill bears N. and S. Descend.
- 71.63 Enter valley bears NW & SE
- 81.25 Crosswire fence bears NW & SE
- An Oak tree 34 in. dia. marked S F.
- 90.23 Cross gulch 10 lks. wide Course S. Leave Valley and Over
rolling land
- 101.63 Cross road bears E. and W.
- 102.13 A telegraph line bears E. and W.
- 132.63 Cross road bears NW and SE.
- 152.63 A road bears N. $37^{\circ} 59'$ E. and S. and along same.

180.13 Cross road bears N. and S.
 321.63 Leave road bears N. 37° 59' E. and E.
 321.88 Enter corn field bears NW. & SE.
 231.63 Leave corn field bears NW. and SE.
 238.38 Cross wash 15 lks. wide Course S. Leave rolling land
 and ascend through dense chaparral.
 266.63 Top of hill bears N & S and descend
 273.63 To sta. No. 30

Aug. 7, 1895

Subdivisions

T. 2 N R 17 W., SBM (Sec. 12)

By

Part 6
 Vol. 380

M F Reilly DS. Contract of Nov. 20, 1884

From witness corner to Sections 7, 12, 13 and 18
 on East Boundary of Tp. which is a post set firmly in
 the ground marked

W C T 2 N S 7 on Northeast

R 16 W S 18 on Southeast

R 17 W S 13 on Southwest and

S 12 on northwest faces with 2 notches on north and

4 notches on south edges and a stone mound in good

order around post I run

(counting distance from true point for corner

which falls in the center of the county road 39 lks. East
 of witness corner)

West on a true line between Sections 12 and 13

Variation 14° 30' east

Over rolling valley

19.88 Cross dry wash 15 lks. wide Course South

34.00 Leave valley bears Northeast and Southwest and ascend

39.80 To foot of perpendicular bluff 60 ft. high impossible

to chain and set a post 3 ft. long 3 inches square with marked stone 12 inches in the ground for witness to $\frac{1}{4}$ section corner marked W. O. $\frac{1}{4}$ S on North face and raised a stone mound around post
Pits impracticable.

Thence offset South 1.50 chains to avoid bluff

Thence West 4.20 chains.

Thence North 1.50 chains.

Thence West on true line counting distance from true point for corner to Sections 7, 12, 13 and 15

54.00 Top of spur bears North and South and descend

60.50 Cross gulch 8 links wide Course South at foot of high sandstone bluff impossible to chains

Offset 1 chain South to avoid same

Thence West on offset line 5.00 chains

Thence North 1.00 chain to true line

Thence West counting distance from true corner to Sections 7, 12, 13 and 15.

68.00 Top of spur bears North and South and descend

80.00 Set a post 4 feet long 4 inches square with marked stone 12 inches in the ground for corner to Sections 11, 12, 13 and 14 marked

T 2 N S 12 on Northeast

R 17 W S 13 on South east

S 14 on Southwest and S 11 on Northwest faces with 1 notch on east and 4 notches on South edges

Dug pits 15 x 15 x 12 inches in each section $5\frac{1}{2}$ feet distant and raised an earth mound 2 feet high $4\frac{1}{2}$ feet base around post

Land for East 34.00 chains rolling valley

with 2nd rate soil

Remainder rough broken and mountainous with third rate soil Scattering oak timber and dense undergrowth of

Chemisal and willow.

September 19, 1895

x x x x x

From corner to Sections 11, 12, 13 and 14

North on a true line between Sections 11 and 12

Variation 14° 30' East

Ascend

- 24.50 Top of ridge bears northeast and southwest and descend
- 37.50 Cross road bears East and West
- 40.00 Set a post 3 feet long 3 inches square with marked stone 12 inches in the ground for $\frac{1}{4}$ section corner marked $\frac{1}{4}$ S on West face
Dug pits 18 x 18 x 12 inches North and South of post $5\frac{1}{2}$ feet distant and raise an earth mound $1\frac{1}{2}$ feet high $3\frac{1}{2}$ feet base around post
- 41.00 Cross same road bears East and West
- 46.00 Cross gulch 5 links wide Course East and ascend
- 47.40 Cross same road bears East and West
- 48.00 Williams house bears East 3.40 chains distant
- 57.50 Top of spur bears Northwest and southeast and Descend
- 61.20 Cross gulch 10 links wide Course South east and ascend
- 70.00 Top of spur bears East and West and descend
- 80.00 Set a post 4 ft. long 4 inches square with marked stone 12 inches in the ground for corner to Sections 1, 2, 11 and 12 marked
T 2 N S 1 on Northeast
R 17 W S 12 on Southeast
S 11 on Southwest and S 2 on Northwest faces

with 1 notch on East and 5 notches on South edges and raised a stone mound around post. Pits impracticable.

Land rough broken and mountainous.

Soil 3rd rate.

Scattering Oak timber and dense undergrowth of chaparral.

East on a random line between Sections 1 and 12

Variation 14° 30' East

40.00 Set temporary quarter section corner

79.69 Intersect East boundary of township 48 links

South of corner to Sections 1, 6, 7 and 12 which is a post set firmly in the ground marked

T 2 N S 6 on Northeast

R 16 W S 7 on Southeast

R 17 W S 12 on Southwest and

S 1 on Northwest faces

With 1 notch on North and 5 notches on South edges and a stone mound in good order around post

Thence I run

S. 89° 39' W. on a true line between Sections 1 and 12

Variation 14° 30' East

Ascend

6.50 Cross road bears North and South

30.00 Top of ridge bears N. 60° E. and S. 60° W. and descend

35.00 a house bears S. 70° E.

about 13 chs. distant

39.00 Enter valley bears North and South

39.85 Set a post 3 feet long 3 inches square 12 inches in the ground for quarter section corner marked

‡ S on North face from which bears

a Live Oak 14 inches diameter N. 62° W 261 links

distant marked ‡ S B T

No other tree within limits

Dug a pit 15 x 15 x 12 ins. East of post $5\frac{1}{2}$ feet distant
and raised an earth mound $1\frac{1}{2}$ ft. high $3\frac{1}{2}$ feet base
around post

56.40 Cross gulch 6 links wide, Course South and continue
over rolling valley

61.55 Cross road bears North and South

63.60 Cross gulch 6 links wide, Course S. 50° E and
continue over valley.

67.40 Cross road bears West and Southeast and along
South side of same;

79.69 The corner to Sections 1, 2, 11, 12

Land mountainous for 39.00 chains

Soil 3rd rate

Land for remaining 40.69 chains rolling valley

with 2nd rate soil

Scattering Oak timber and dense undergrowth Chaparral.

September 21, 1895
