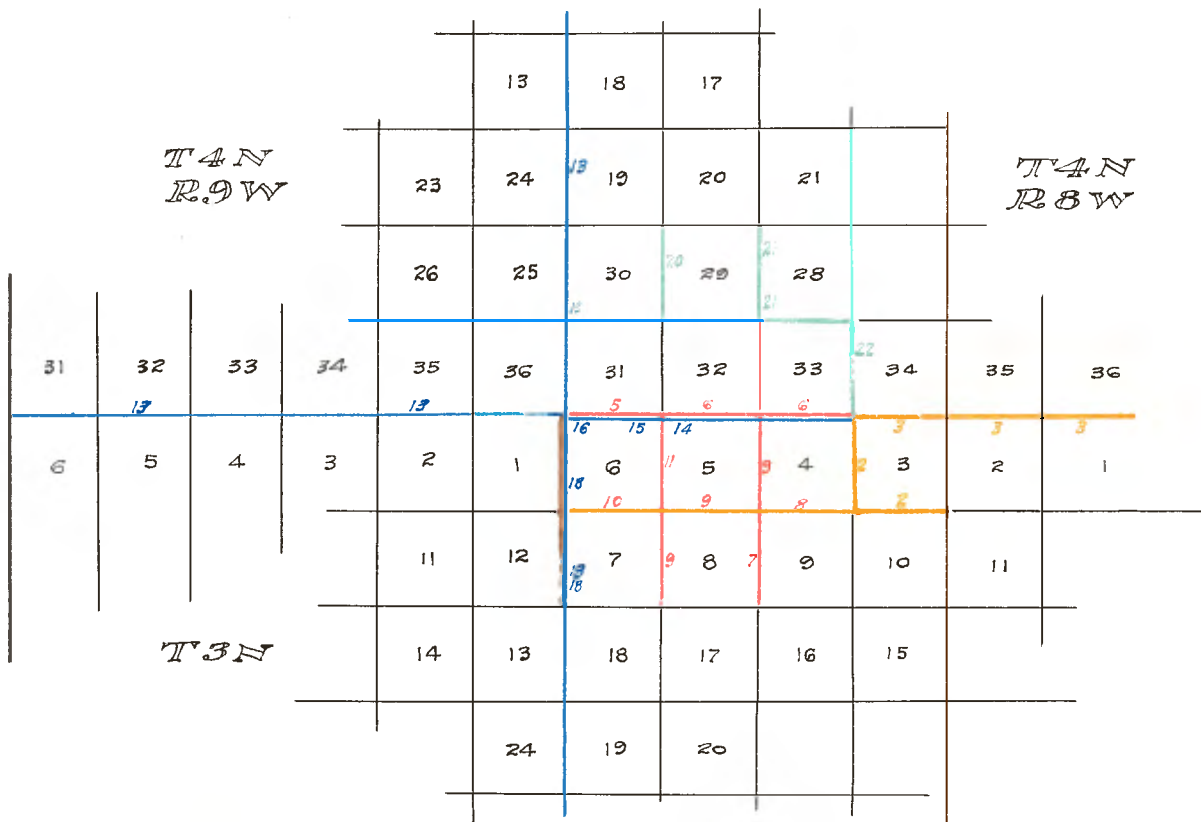


COPIED FROM
 CERTIFIED COPY OF FIELD NOTES
 of
 SECS. 28 to 33, T. 4 N., R. 8 W.
 and
 SECS. 1 to 9, T. 3 N., R. 8 W., S.B.M.

Notes furnished by U. S. Cadastral Engr.
 at San Francisco,
 Calif.



- Norway 1875
- Pearson 1883
- Minto 1882
- Friel 1900
- English 1917

Harry S. Palmer (Signed)
Acting Office Cadastrel
Engineer for California.

I, Harry S. Palmer, Acting Office Cadastrel Engineer, do hereby certify that the annexed transcript of the field notes of survey of Sections 4, 5 and 6 of Township 3 North, Range 8 West; and Sections 31, 32 and 33, of Township 4 North, Range 8 West, of San Bernardino Meridian, is a true and literal exemplification of said field notes as the same remain on file and of record in this office.

DEPARTMENT OF THE INTERIOR
GENERAL LAND OFFICE
— — —
Public Survey Office
San Francisco, California
December 2nd, 1931

Survey made by W. H. Norway, Deputy Surveyor,

Contract dated July 31, 1875.

Survey executed Nov. 6th - 22nd 1875.

Fifth Mile North.

North on E. boundary of Sec. 12.

Set a pine post 4 x 4 inches, 3 1/2 ft. in a mound of rocks

as instructed for cor. to secs. 1, 6, 7 & 12, from which

A white pine 2 1/2 inches dia. bears N. 20° W. 70 lks. dist.

" " " " " 20 " " " S. 7° E. 10 "

Sixth Mile North.

North on E. boundary of Sec. 1.

Var. 1 1/4 East.

Descending.

Set a pine post 3 x 3 inches 3 ft. long, in a mound of

rocks as instructed for 1/4 sec. cor. from which

A white pine 2 ft. in dia. bears N. 20° W. 10 lks. dist.

A white pine 2 ft. in dia. bears S. 40° E. 40 lks. dist.

Cross a branch of Rock Creek (dry) 150 lks. wide,

course N.W. and ascend.

Set an oak post 6 x 6 inches 4 ft. long, in a large mound

of rock as instructed for cor. to Tps. 3 and 4 N., R.

8 - 9 W.

Land, very rough, 5/8 good pine, N 1/2 3rd rate.

There is very little timber east of this line in Tps.

3 N., R. 8 W. It is mostly broken, barren mountains,

November 8, 1875.

362-11
Survey made by William Minto, U. S. Deputy Surveyor,
Contract dated May 26, 1882

Survey executed in 1882.

From corner to sections 2, 3, 10 and 11, I run

West on a true line between sections 3 and 10.

80.00 Set a granite stone 28 x 12 x 10 inches, 18 inches deep

in ground for corner to sections 3, 4, 9 and 10, marked

with 3 notches on east and 5 notches on south edges;

from which bears

A yellow pine 48 inches diameter, North 6 7/8° West

43 links distant, marked T 3 N R 2 W S 4 BT.

A yellow pine 10 inches diameter South 59 7/8° West

43 links distant, marked T 3 N R 8 W S 9 BT.

A yellow pine 8 inches diameter North 18° East

80 links distant, marked T 3 N R 8 W S 3 BT.

A yellow pine 38 inches diameter South 67 3/4° East

75 links distant, marked T 3 N R 8 W S 10 BT.

Bald peak brs. S. 76 3/4° West.

From corner to sections 3, 4, 9 and 10, I run

North on a random line between sections 3 and 4.

Var. 15° East.

Ascend very steep.

24.00

Top of steep ascent and ascend gradual.

25.50

Bald peak bears South 72° West.

28.50

Main divide between San Gabriel river and waters, running

into Rock Creek, bears East and west and descend.

33.50

Head of ravine, course north east.

38.00

Spur slopes north 70° east.

39.25

Ravine course east.

40.00

Set temporary 7/8 section corner.

46.50

Spur north east and descend steep.

Variation 140 1/2 East.
 Setting temporary corners at every 40 and 80 chains and
 at 3 miles and 11.00 chains came to an abrupt granite
 descent towards canon, about 500 ft. deep, over which
 it is impracticable to extend line, as in advance there

From corner to Tps. 3 and 4 North, Ranges 7 and 8 West,
 sections 1 and 6, 31 and 36, 1 run
 West on a random line between Tps. 3 and 4 North, Range
 8 West.

N. B. T. 3 N., R. 8 W., S. B. M.

215-17
 Survey made by Wm. Minto, Deputy Surveyor,
 Contract dated May 26, 1882.
 Survey executed July 6th-8th, 1882.

July 12, 1882.

Heavy undergrowth of chaparral and buckbrush.
 Yellow pine, fir and spruce timber.
 Soil, second and third rate.

Land, steep and abrupt, broken mountains.
 To corner to sections 3, 4, 9 and 10.

79.89

12 links distant, marked 1/4 S BL.
 A yellow pine 8 inches diameter, South 42 1/2 East
 12 links distant, marked 1/4 S BL.
 A yellow pine 60 inches diameter, South 88 West,

from which bears
 in ground for 1/4 section corner, marked 1/4 on west face,

Set a granite stone 26 x 7 x 6 inches, 15 inches deep
 Var. 150 15 East.

79.89

South 00 1/2 East on a true line between sections 3 and 4.
 Intersect north boundary 29 links east of corner to
 sections 3, 4, 33 and 34, thence

79.89

Descend abruptly. 71.00
 Flat spur slopes north 45 east. 68.00
 Having, course northeast and ascend. 57.00

T. 3 N., R. 8 W., S. B. M.

T. J. N., R. & W., S. B. M.

is a steep high mountain covered with slate and loose rock unfit for cultivation.

I therefore mark at this point a spruce 28 ins. dia. on

east face 11.00 chains west corner sections 3, 4, 33 and 34.

Thence East on a true line between sections 4 and 33.

Variation 15° 15' East.

Ascend steep.

Spur slopes north and descend steep.

11.00

Set granite stone 26 x 20 x 10, 18 ins. deep in ground on

steep side hill sloping east with 3 notches on east and

west edges, for corner to sections 3, 4, 33 and 34, from

which bears

A spruce 42 ins. dia. North 60° West 32 links distant,

marked T 4 North, R. & West, Sec. 33 B.T.

A sugar pine 48 ins. dia. North 39° East, 27 links

distant, marked T 4 North, R. & West, S. 34 B.T.

Raised mound of stone along side, pits impracticable.

Land, very rough and broken, mountainous.

Soil, second and third rate.

Yellow and sugar pine, spruce and fir timber.

Undergrowth of same.

215-18

Survey made by G. W. Pearson, Deputy Surveyor,
Contract dated December 10, 1883.

Survey executed March 11th - 13th, 1884.

From witness corner to sections 3, 4, 33 and 34, which is

a spruce tree 28 ins. dia. marked W O. T. 4 N., R. & W.

Sec. 34 on N.E. T 3 N R & W. sec. 3 W.C.S.E.

T 3 N R & W Sec. 4 W O S. W. and T 4 N R & W Sec. 33

W.C. N.W. faces, I run

West on a random line between said Tps.

It being impracticable to chain across deep canon, I

cause flag to be sent across canon on line,

I chain south from tree 8.00 chains for base to a point

whence flag bears North $76 \frac{3}{4}$ West, which gives for

distance by calculation 34.00 chains.

Total distance on line from the corner to sections 3,

4, 33 and 34, being 45.00 chains.

From this point I continue west on a random line setting

temporary half mile and mile corners at each 40 and 80

chains and find the township line to be 2 miles 78.00

chains and 70 links long, counting distance from true

corner to sections 3, 4, 33 and 34, and the falling to be

10.80 chains south of the corner to Townships 3 and 4

North, Ranges 8 and 9 West, which is an oak post 6 x 6

ins. firmly set in large mound of rocks, marked

T 4 N R 8 W Sec. 31 on north east;

T 3 N R 8 W Sec. 6 on southeast;

T 3 N R 9 W Sec. 1 on southwest;

T 4 N R 9 W Sec. 36 on northwest faces, with 6 notches

on the north, south, east and west corners.

Thence I run

South 87° 18' East on a true line between sections 6 and 31.

Variation 14° 28' East

Descend.

Branch of rock creek, 80 lks. wide, course north 20° west

and ascend.

Set granite stone 16 x 11 x 10 ins. 11 ins. in the ground

for $\frac{1}{4}$ section corner marked $\frac{1}{4}$ on north face and raised

mound of stone alongside.

pts impracticable.

Top of ridge bears north and south and descend.

Set granite stone 14 x 12 x 6 ins. 9 ins. in the ground

for corner to sections 5, 6, 31 and 32, Tps. 3 and 4 North

Range 8 West, marked with 1 notch on the west and 5

78.70

60.00

38.70

31.60

33.

South 87° 18' East on a true line between sections 4 and 32.

Dense undergrowth of chaparral.

Timber, none.

Soil, third rate.

Land, mountainous.

Pits impracticable.

and raised mound of rocks alongside.

notches on the west end 4 notches on the east edges,

for corner to sections 4, 5, 32 and 33 marked with 2

Set granite stone 20 x 11 x 8 ins. 15 ins. in the ground 80.00

Revine 1.75 chains wide, course north and ascend. 63.60

Pits impracticable.

mound of stone alongside.

for 1/2 section corner marked 1/2 on north face and raised

Set granite stone 16 x 11 x 5 ins. 11 ins. in the ground 40.00

Top of ridge bears north and south and descend. 33.50

Revine 1.20 chains wide, course north and ascend. 13.00

Descend.

Variation 14° 28' East.
South 87° 18' East on a true line between sections 5 and 32.

Timber, none.

Dense undergrowth of chaparral.

Soil, third rate, rocky.

Land, mountainous.

Pits impracticable.

alongside.

notches on the east edges and raised mound of rocks

Ascend.
 Top of ridge bears north and south and descend.
 2.70
 Gulch 60 links wide, course North 10° East and ascend.
 19.00
 Leave dense chaparral and ascend abruptly over loose
 21.00
 rock.
 Summit of high rocky ridge bears North 5° East, and
 35.00
 South 5° West about 500 ft. above section corner.
 It being impracticable to measure the line any further
 in this direction on account of the abrupt descent over
 loose rock, I set a granite stone 18 x 10 x 9 ins. 13 ins.
 in the ground for witness to $\frac{1}{4}$ sec. cor. marked W.C. $\frac{1}{4}$ on
 west face and raised large mound of rocks alongside.
 Pits impracticable.
 Land, mountainous.
 Soil, third rate.
 Timber, none.
 21.00 chains, dense undergrowth of chaparral.
 14 chains, loose rock.

 Chains
 161-32
 Survey made by G. W. Pearson, Deputy Surveyor,
 Contract dated Dec. 10th, 1883.
 Survey executed March 15th - 21st, 1884.

 North between secs. 8 and 9. Var. 14° 28' E.

 80.00 Set granite stone 19 x 11 x 4 ins. 15 ins. in the ground
 for cor. to secs. 4, 5, 8 and 9, marked with 4 notches on
 the N. and 5 notches on S. edges and raised mound of stone
 alongside.
 Pits impracticable.

T. J. M., R. S. W., S. B. M.

Variation 14° 28' East.

E. J. N., R. S. W., S. B. M.

Chains

East on a random line between Secs. 4 and 9.

Var. 140 281 E.

40.00

Set temporary $\frac{1}{4}$ sec. cor.

75.45

Intersect N. and S. line 46 lks. N. of cor. to sec. 3,

4, 9 and 10, which is a granite stone 10 ins. above ground marked with 5 notches on the S. and 3 notches on the east edges; from which bears

A yellow pine 48 ins. diam. N. 67° W. 43 lks. dist.

marked T 3 N R S W Sec. 4 B T.

Yellow pine 12 ins. diam. S. 59½° W. 43 lks. dist.

marked T 3 N R S W Sec. 9 B T.

Yellow pine 10 ins. diam. N. 18° E. 80 lks. dist.

marked T 3 N. R. S. W., Sec. 3 B T.

Yellow pine 36 ins. diam. S. 67 3/4° E. 75 lks. dist.

marked T 3 N R S W Sec. 10 B T.

Bald Peak brs. S. 87° West.

Thence I run

N. 89° 40' West on a true line between secs. 4 and 9, with

same variation.

Descend.

7.50

Gulch 30 lks. wide, course S. and ascend.

37.72

Set a granite stone 14 x 10 x 6 ins. 9 ins. in the ground for $\frac{1}{4}$ sec. cor. marked $\frac{1}{4}$ on N. face and raised mound of stone alongside.

Plts impracticable.

55.00

Top of ridge bears N. and S. and descend.

63.00

Gulch 40 lks. wide, course S. 50° W. and ascend.

75.45

The cor. to sec. 4, 5, 8 and 9.

Bald Peak bears S. 85° West.

Land, mountainous.

Soil, third rate.

Timber, scattering pine & oak.

Dense undergrowth of chaparral.

North on a true line between secs. 4 and 5.

Va. 14th 28th East

T. 3 N., R. 8 W., S. B. M.

Chains

Ascend.

Summit of divide between Rock Creek and San Gabriel river

25.40

hrs. E. and W. and descend along ridge.

Set a granite stone 20 x 11 x 6 ins. in ground

40.00

for $\frac{1}{2}$ sec. cor. marked $\frac{1}{2}$ on W. face and raised mound of

stone along side.

Pits impracticable.

82.78

Intersect north boundary of township at a point 4.80 chs.

S. 87 $^{\circ}$ 20' E. of cor. to secs. 4, 5, 32 and 33.

At point of intersection set a granite stone 19 x 12 x 6

ins. 14 ins. in ground for closing cor. to secs. 4 and 5,

Tr. 3 N., R. 8 W. marked O.C. with 4 notches on the E. and

2 notches on the W. edges and raised mound of stone along side.

Pits impracticable.

Land, mountainous.

Soil, 3rd rate.

Timber, none.

Dense undergrowth of chaparral.

North bet. secs. 7 and 8.

Set granite stone 18 x 13 x 6 ins. 13 ins. in ground

for cor. to secs. 5, 6, 7 and 8, marked with 5 notches

on S. and E. edges and raised mound of stone along side.

Pits impracticable.

East on a random line between sections 5 and 8.

Va. 14th 28th E.

80.00

Chains	40.00	Set temporary $\frac{1}{4}$ sec. cor.
	79.80	Intersect N. and S. line 28 lks. N. of cor. to secs. 4, 5, 8 and 9. Thence I run N. 89° 48' West on a true line bet. secs. 5 and 8. With same variation. Descend.
	20.40	Gulch 30 lks. wide, course south and ascend.
	39.40	Summit of ridge brs. N. and S. and descend.
	39.90	Set granite stone 13 x 11 x 9 ins. in the ground for $\frac{1}{4}$ sec. cor. marked $\frac{1}{4}$ on N. face and raised mound of stone alongside.
		Pits impracticable.
	57.00	Gulch 20 lks. wide, course S. 5° E. and ascend.
	69.00	Summit of ridge brs. N. and S. and descend.
	75.00	Head of gulch, course S.W. and ascend.
	79.90	The cor. to secs. 5, 6, 7 and 8. Land, mountainous. Soil, 3rd rate. Timber, none. Dense undergrowth of chaparral. -----
		West on a true line between secs. 6 and 7. Va. 14° 28' E. Ascend.
	21.20	Summit of divide bet. San Gabriel and Rock creek brs. N. 70° E. and S. 70° W. and descend.
	40.00	Set granite stone 12 x 11 x 10 ins. in the ground for $\frac{1}{4}$ sec. cor. marked $\frac{1}{4}$ on N. face and raised mound of stone alongside.

March 20th, 1884.

Tr. 2 N., R. 8 W., S. B. M.

Chains

22.15

Pite impracticable.

Intersect East boundary of township at a point 10.45 chs. S. of cor. to secs. 1, 6, 7 and 12, which is a post 4 x 4 ins. firmly set in mound of rocks, marked

Tp. 3 N., Sec. 6 on N. E.

R. 8 W. Sec. 7 on S. E.

R. 9 W. Sec. 12 on S. W.

Tp. 3 N. Sec. 1 on N. W. faces.

I destroy the marks on the N. E. and S. E. faces of post,

also on white pine which brs. S. 7^o E. 10 lks. from post,

marked Tp. 3 N., R. 8 W. Sec. 7 and at point of intersection

set a post 4 x 4 ins. 4 1/2 ft. long, with marked stone 12 ins.

in the ground for closing cor. to secs. 6 and 7, marked

Tp. 3 N., R. 8 W. C C on East and Sec. 6 on N. and

Sec. 7 on S. faces and raised mound of stone around post.

Pite impracticable.

Land, mountainous.

Soil, 3rd rate.

Timber, none.

Dense undergrowth of chaparral.

North on a true line between secs. 5 and 6.

Ve. 14^o 28' East

Ascend.

Summit of divide bet. San Gabriel and Hook creek, pres.

E. and W. and descend.

Gulch 10 lks. wide, near head; course N.E. and ascend.

Set granite stone 16 x 11 x 7 ins. 11 ins. in the

ground for 7/8 sec. cor. marked 7/8 on W. face and raised

mound of stone alongside.

Pite impracticable.

40.00

22.10

6.30

E. Bdy. T. 4 N., R. 9 W., S. B. M.

103-6

Survey by Legend Friel, Deputy Surveyor,
Contract dated February 10th, 1900
Survey executed May 7th - July 19th, 1900.

I begin at the iron post closing cor. to secs. 18 and 19
T. 4 N., R. 8 W. marked and witnessed as described by the
Surveyor General.
Thence I run
South on random line along the E. bdy. of the Tp.
At the point for the S. E. cor. of the Tp. I searched
diligently, extending for the branch of Rock Creek, north
for $\frac{1}{2}$ mile and for at least 10 chs. up on each side of
my random line and failed to find any cor.

May 16th, 1900.

I continue south on random line and fail to find either
the $\frac{1}{4}$ cor. upon the east side of sec. 1 or the cor. to
secs. 1 and 12 of T. 3 N., R. 9 W. at
To a point 8.60 chs. east of the $\frac{1}{4}$ cor. upon the east
side of sec. 12, T. 3 N., R. 9 W., standing and marked
and witnessed as described by the Surveyor General.

May 17th, 1900.

N. Bdy. T. 3 N., R. 9 W.

I then go to the cor. of Tps. 3 and 4 N., Rgs. 9 and 10 W.
which I find standing, marked and witnessed as described
by the Surveyor General, and run
N. 89° 49' E. *****

Point for cor. of Tps. 3 and 4 N., Rgs. 8 and 9 W.

May 26th, 1900.

I continue on this line searching diligently for cor-

ners as described and at

To a point 10.30 chs. south of a spruce 36 ins. in diam.
marked on E. face "11 chs. W." of 34.

From this tree I run East.

722.90

780.80

368.58

Resurvey of S. bdy. of T. 4 N., R. 8 W.

11.00 To a granite rock cor., of secs. 3, 4, 33 and 34, Tps. 3 and 4 N., R. 8 W. marked and witnessed as described by the Surveyor General.

May 28th, 1900.

From the spruce 11.00 chs. W. of the cor. to secs. 3, 4, 33 and 34, Tps. 3 and 4 N., R. 8 W. I run a straight line to the cor. of Tps. 3 and 4 N., Rgs. 9 and 10 W. and upon this line reestablish the old cor. at proportionate distances.

I therefore run

S. 89° 00' W. along S. bdy. of sec. 33, through pine timber,

descending.

11.00

Havine, 10 lks. wide, course North and ascend steep

mountain,

29.58

Set a pine post, 3 ft. long, 4 ins. sq., 24 ins. in the ground, for $\frac{1}{4}$ sec. cor. of sec. 33, marked $\frac{1}{4}$ S 33 on North face; from which

A bull pine 3 ft. dia. bears N. 83° 00' E. 106 lks.

dist. marked $\frac{1}{4}$ S 33 BT.

A bull pine 4 ft. diam. bears N. 17° 45' W. 33 lks.

dist. marked $\frac{1}{4}$ S 33 BT.

33.50

Summit of spur, course North and descend.

64.50

Havine 5 lks. wide, course N. 10° E. and ascend.

65.51

Set a pine post 3 ft. long, 4 ins. sq. 24 ins. in the ground for closing cor. of secs. 4 and 5, T. 3 N., R. 8 W.

marked

O. C. T. 3 N., R 8 W on S.

S 4 on E. and

S 5 on W. faces; with 4 grooves on E. and 2 grooves on

W. faces; from which

Resurvey of S. Bdy. of T. 4 N., R. 8 W., S. B. M.

A yellow pine 5 ft. in diam. bears S. 14° E. 106 lks. dist. marked C. O. T. 3 N., R. 8 W S 4 BT.
A bull pine 5 1/2 ft. diam. bears S. 51° W. 46 lks. dist. marked C. O. T. 3 N R 8 W S 5 BT.
Set a pine 3 ft. long, 4 ins. sq. 24 ins. in the ground, for cor. of secs. 32 and 33, marked T 4 N S 33 on NE. and R. 8 W. S 32 on NW. faces, with 4 notches on E. and 2 notches on W. edges.
A bull pine 2 ft. diam. bears N. 73° E. 17 lks. dist. marked T. 4 N. R 8 W S 33 BT.

A bull pine 4 ft. in diam. bears N. 59° 15' W. 40 lks. dist. marked T 4 N R 8 W S 32 BT.

Land, mountainous,
Soil, rocky, 3d rate.
Timber, pine.
Mountainous land, 70.40 chs.

S. 89° W. along S. bdy. of sec. 32.

Ascending.

Summit of spur, course north and descend.

Ravine, 10 lks. wide, course North and ascend.

Summit of spur, course North and descend.

40.81 7/8

Set a pine post, 3 ft. long, 4 ins. sq., in mound of rock and earth, for 1/4 sec. cor. of sec. 32, marked 1/4 S 32 on N. face; from which

A yellow pine 4 ft. in diam. bears N. 32° 30' E.

1 1/4 lks. dist. marked 1/4 S 32 BT.

Pits impracticable.

Ravine 5 lks. wide, course N. 15° E. and ascend.

Summit of spur, course North and descend.

Ravine, 20 lks. wide, course N. 10° W. and ascend.

Set a pine post 3 ft. long, 4 ins. sq. 24 ins. in the

77.03

72.00

50.00

42.00

29.00

17.00

5.00

70.40

Resurvey of S. Bay, of T. 4 N., R. 8 W., S. E. M.

Ground, for closing cor. to secs. 5 and 6, T. 3 N., R. 8 W. marked C.C. T. 3 N., R. 8 W. on S. S 5 on E. and S 6 on W. faces, with 5 grooves on E. and 1 groove on West faces; from which

A yellow pine 5 ft. in dia. bears S. 60 E. 31 lks.

dist. marked C.C. T 3 N. R 8 W. S 5 BT.

A bull pine 16 ins. in diam. bears S. 66° 30' W. 87 lks.

dist. marked C O T 3 N R 8 W S 6 BT.

Set a pine post, 3 ft. long, 4 ins. sq. in mound of rock

and earth for cor. of secs. 31 and 32, marked

T 4 N S 32 on NE. and R 8 W S 31 on NW. faces, with

5 notches on E. and 1 notch on west edges; from which

A bull pine 3 ft. in diam. bears N. 62° E. 221 lks.

dist. marked T 4 N R 8 W S 32 BT.

Pite impracticable. Land, mountainous.

Soil, rocky, 3rd rate.

Timber, pine.

Mountainous land, 81.63 chs.

June 7th, 1900

S. 29° W. along S. bay. of sec. 31.

Ascending.

26.00 Summit of spur of high rocky mountain, course N. 20° W.

and descend through scattering pine timber.

Set pine post 3 ft. long, 4 ins. sq. in mound of rock for

1/2 sec. cor. of sec. 31, marked 1/2 S 31 on N. face; from which

A yellow pine 4 ft. in diam. bears N. 16° 36' W. 153 lks.

dist. marked 1/2 S 31 BT.

Pite impracticable.

80.29 Set an oak post, 4 ft. long, 4 ins. sq. 24 ins. in the

Resurvey of S. Bdy. of T. 4 N., R. 8 W., S. B. M.

Ground, for the cor. of Tps. 3 N., Rgs. 8 and 9 W., marked

T 3 N R 8 W S 6 on S.E.

R 9 W S 1 on SW. faces, with 6 notches on E. and W.

edges; from which

A hemlock 5 ft. in diam. bears S. 56° E. 88 lks. dist.

marked T 3 N R 8 W S 6 BL.

An oak 10 ins. in diam. bears S. 30 001 W. 66 lks. dist.

marked T 3 N R 8 W S 1 BL.

Land, mountainous.

Soil, rocky.

Timber, scattering pine and oak.

Mountainous land, 80.29 chs.

3.30

S. 89° 00' W. along N. bdy of Sec. 1.
Descending.

Intersect N. and S. line 240.72 chs. S. of the iron post
set for closing cor. to secs. 18 and 19, T. 4 N., R. 8 W.
previously described.

Set a pine post 3 ft. long, 4 ins. sq., 24 ins. in the
ground for cor. to Tps. 4 N., R. 8 and 9 W., marked

C. C. T. 4 N. on N.

R. 8 W. S 31 on E. and

R 9 W. S 36 on W. faces, with 6 grooves on E. & W.

faces; from which

An oak 8 ins. in dia. bears N. 45° 30' E. 141 lks. dist.
marked C.C. T. 4 N., R. 8 W. S. 31 BL.

An oak 10 ins. in diam. bears N. 74° 30' W. 111 lks.

dist. marked C. C. T. 4 N. R. 9 W., S. 36 BL.