

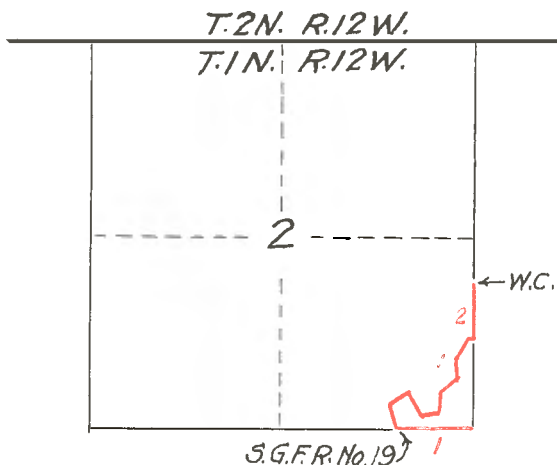
UNITED STATES  
DEPARTMENT OF THE INTERIOR  
GENERAL LAND OFFICE

PUBLIC SURVEY OFFICE,  
San Francisco, California,  
December 30, 1931.

I, FRANK E. BARKER, Office Cadastral Engineer, do hereby certify that the annexed two pages relating to the establishment of the witness corner to the quarter section corner between Sections 1 and 2, Township 1 North, Range 12 West, San Bernardino Base and Meridian, California, as established by Lewis H. Cutting, Deputy Surveyor, under Contract No. 126, dated January 24, 1896, are correctly copied from the files of this office.

Frank E. Barker (Signed)  
Office Cadastral Engineer.

(S E A L)



June 15, 1897; At 8h. 11m. A.M. 1.m.t. I set off  
34°11' north on the lat. arc; 33°22' north on the decl.  
arc; and determine a true meridian with the solar at  
the corner to Sections 1,2,11 and 12, T. 1 N. R.12 W.

---

T. 1N. R.12 W., S.B.M.

---

I established a witness corner to this quarter  
section corner, by traversing up a canon, as follows:

In order to determine the proper alignment of my  
transit, I re-traced the line between Sections 1 and 12  
as follows: From the true corner to Sections 1,2,11 and  
12, I run north 88°37' east between Sections 1 and 12,  
and at

40.00 Intersect the witness corner to quarter section corner.

It being impossible to run north from the corner to  
Sections 1,2,11, 12 or south from the corner to Sections  
1,2,35 and 36, on north boundary of the township. I go  
to iron post No. 19, S.G.F.R. on line between sections  
2 and 11 which was set as witness corner to corner to  
Sections 1,2,11 and 12, and run with the transit, as  
follows; counting distance from the true corner to  
Sections 1, 2, 11 and 12.

West 15.50 chs. cor. No. 19, S.G.F.R.

Thence traversing up steep mountain  
side over the most suitable ground.

N. 15 $\frac{1}{4}$ ° W. 5.00 chs.

N. 56° E. 5.00 "

S. 28 $\frac{1}{4}$ ° E. 5.70 "

N. 82° E. 3.00 "

N. 4 $\frac{1}{2}$ ° E. 4.00 "

N. 48 $\frac{1}{2}$ ° E. 5.00 "

N. 3° W. 4.49 "

N. 30° E. 5.00 "

East .65 to a point on line between  
sections 1 and 2, which gives  
for latitude

Chains

19.15 A point due North of true corner to sections  
1, 2, 11 and 12.  
Thence continuing line north between sections  
1 and 2.

30.00 Unable to proceed further on account of rough  
and precipitous nature of the ground in  
advance. At this point  
set a granite rock 24 x 24 x 18 inches,  
18 inches in the ground for witness corner to  
quarter section corner, marked S. G. F. R. on  
east side, W.C.  $\frac{1}{4}$  on west side; and raise  
a mound of stone, 2 feet base  $1\frac{1}{2}$  feet high,  
west of corner.  
Corner stands on high rocky spur, bears west 400  
feet above canon.  
Land mountainous.  
Soil third rate.  
No timber. Undergrowth chaparral.

---