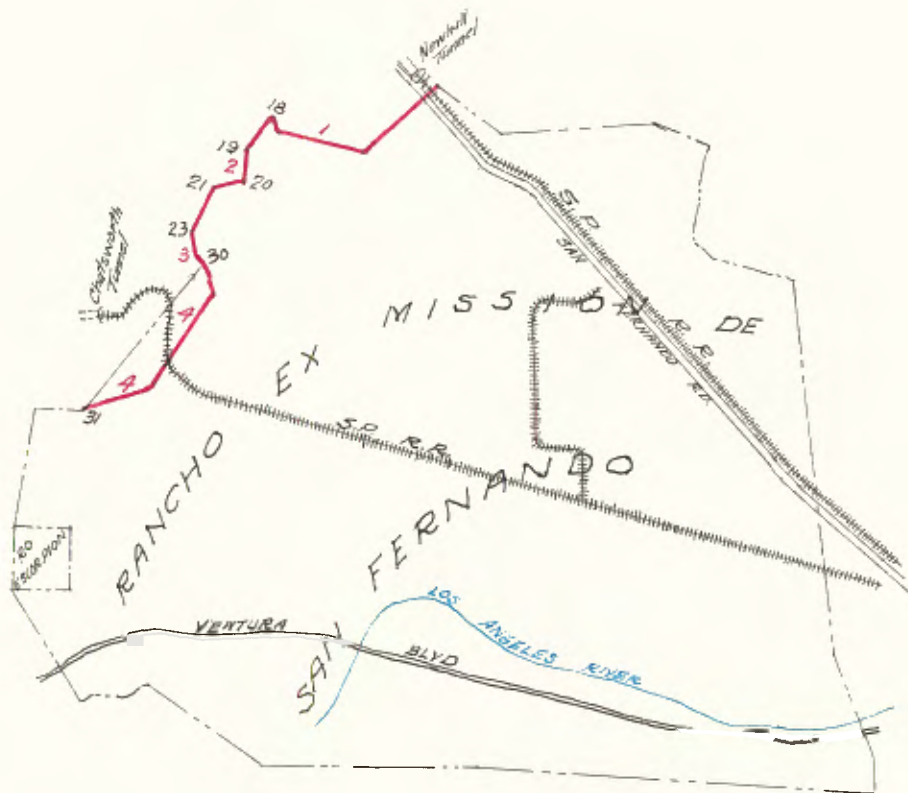


COPIED FROM THE ORIGINAL NOTES  
OF  
HENRY HANCOCK  
FROM HIS ORIGINAL BOOK ENTITLED "SAN FERNANDO NO.2"  
LOANED TO THE COUNTY SURVEYOR  
BY  
THE LA BREA RANCH CO., CALIFORNIA BANK BLDG.

---

(For Rectigraphs of the Original Notes See Level Book 814:1-6)



July 1st, 1858

From Sta. 37 on San Fernando Rancho near the corral (?)

I ran S. 66° W.

10.50 Crossroad bears S. 10° E.

16.00 Dry Wash Course S. 16° E.

22.00 Leave Dry Wash.

45.00 Drove a stake on left bank of dry arroyo.

76.00 Cross dry wash C S. 50° E.

80.00

---

9.52 Cross dry wash S. 42° E. has sycamore and cottonwood, Thru Valley about 30 chains wide.

50.00 To Base of High oat hills bearing S.W. & N.E.

---

Thence N. 58½° W.

20.50 A spring bears from this point S. 20° E. about 4 chs. dist. Sycamore, Willow, Black Walnut, Timber.

24.00 Cross a small stream of water C. N. 80° W.

67.00 To an oak on the Mkd. Sta. 2 on an offset

80

21.50 Thence N. 80° W.

26.50 To top of high hill set Sta. 3, from which the Mission of San Fernando bears S. 57° E. The adobe at the head (?) of the Mission Water (?) Bears S. 76° E. The adobe near Sta. 37 bears N. 88½° E.

Thence N. 1½° W.

15.00 To a Black Walnut

The San Fernando pipe (?) Bears N. 46¼° E.

---

Thence from the tree I ran S. 75° W. 26.50' to a Rock Mound made by the Coast Surveyors on a high point of hill from which the Mission of San Fernando bears S. 74° E. The mouth of San Francisco Canon, or Lumis Pass bears N. 4° E. Made Md. of rocks. Marked a post 5 in. square for corner N.W. of San Fernando Ranch.

Thence S. 38½° W.

38° W.

15.00 Brow of the hill.

---

Thence S. 4¼° W.

62.50 To a low point of hill Sta. 1

Thence S. 77½° W.

14.00 Spring of fresh water bears S. 35° E. 2 chs. dist.

A spring of fresh water bears N. 16.5 chains distance

51.00 Cross small stream of water course S. 12½° W. in a deep canon.

The last 40 chs. has growth of wild oats, scattering oaks, walnut,

To the creek is sycamore, willow & cottonwood.

60.00 Set Sta. 3, from line on the Mountain.

---

Thence S. 13½° W.

80.00

4.00 Cross creek small stream of water, course S. 8° W.

8.00 Set Sta. 4 On. Right Bank of Creek, Willow, Cottonwood, Sycamore, and Oak.

---

Thence S. 7° E.  
 4.50 Cross Creek S. 35° W.  
 17.00 Cross Creek S. 42° E.  
 27.00 Offset 3 Pins (?) S. 83° W.  
(37.50 Set Sta. \_\_\_\_\_)5

Thence S. 24½° E.  
 .50 Cross fence of (?)  
 2.50 Set

---

Thence S. 15° W.  
 5.00

---

Thence S. 5° W.  
 1.00

---

Thence S. 22½° W.  
 7.00

---

Thence S. 41° W.  
 6.00 To Sta. 30. Pat.

---

Thence S. 21° E.  
 11.50

---

Thence S. 6° W.  
 9.50

---

Thence S. 15° E.  
 12.00 To mouth of canyon.

---

Thence S. 39¼° W.  
 45.00 A spring at Base of Low hills bears N.18°W. about 15 chs. Dist.

80.00

35.00 Enter Oaks timber.

Trail to Simi

80.00 Blazed an Oak 30 in. in diam.  
67.50 Blazed an oak tree 32 in. diam. fa ? Sta. #4  
Thence S. 77° W.  
32.50 To dead Oak tree. Sta. 31.

---

(Back of Book:)

A tree (?) on Point bears N. 72½° W.  
" " " " " N. 78° W.  
15.00 Base N. 1½° W.