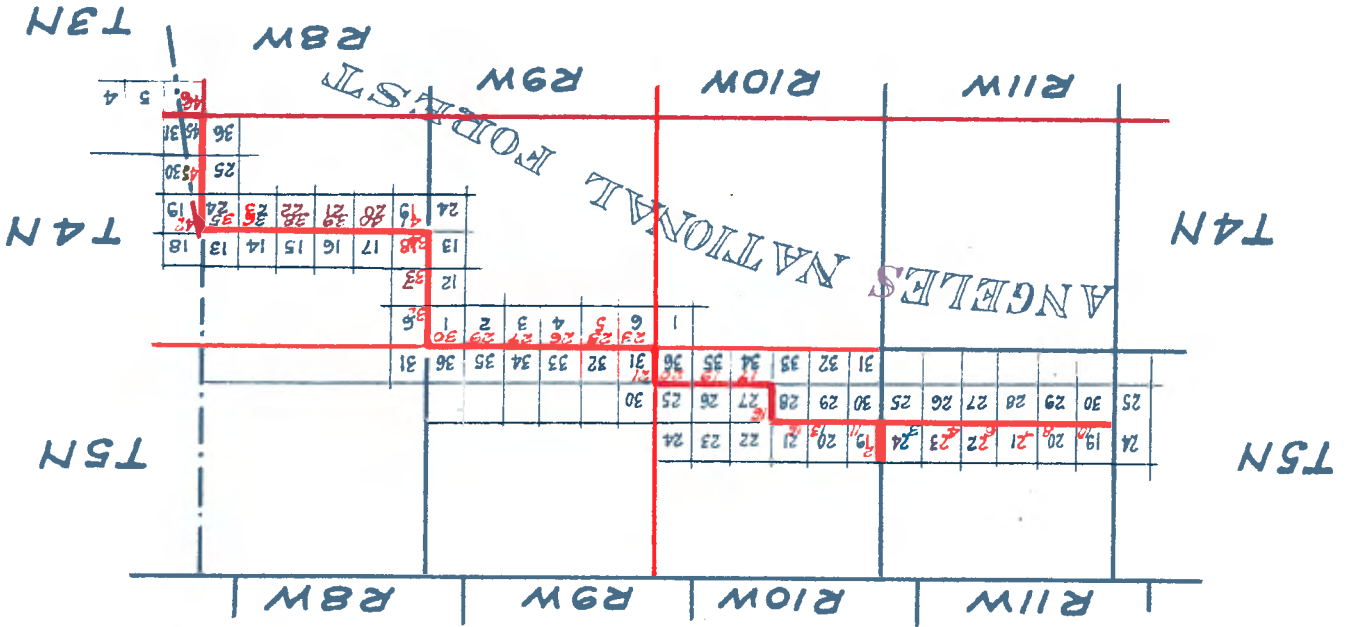


Survey of  
 Portion of Boundary of  
 SAN GABRIEL FOREST RESERVATION.

Vol. No. 8-187-239  
 Lewis H. Cutting, 1896.

Copied from notes on file at the  
 United States Cadastral Engineer's  
 Office, Glendale. Copied and compared  
 by A. C. Johnson and A. J. Bartlett,  
 March 29, 1934.

T6N



Cutting - 1896

J. M. Gleaves  
U. S. Surveyor General for California.

above written.

Attest my hand and official seal this day and date herein

file in this office.

the original field notes, as the same remain of record and on

that the foregoing transcript has been correctly copied from

I, U. S. Surveyor General for California do hereby certify

San Francisco, July 25, 1898.

OFFICE OF U. S. SURVEYOR GENERAL

W. S. Green  
U. S. Surveyor General for California.

they describe are hereby approved.

and explanations made, the said field notes and the surveys

having been critically examined and the necessary corrections

Deputy Surveyor under his contract No. 126 dated Jan. 26, 1896,

in the State of California executed by Lewis H. Cutting, U. S.

of the San Gabriel Forest Reservation, San Bernardino Meridian,

The foregoing field notes of the surveys of the boundary

San Francisco, California  
March 11, 1897

OFFICE OF U. S. SURVEYOR GENERAL

BOUNDARY OF SAN GABRIEL FOREST RESERVATION.

VOL. NO. - 5: 187, etc.  
Lewis H. Cutting, 1896.

Survey East Boundary T. 5 N., R. 11 W., S. 18 N.

from the corner to Secs. 13, 18, 19 and 24 on the E. boundary  
of T. 5 N., R. 11 W., where I found a post, partly decayed, lying  
on the ground, some of the marks legible, near a portion of an  
old earth mound and which I remark by setting a redwood post,  
3 ft. long, 4 inches square, 24 inches in the ground, marked

T. 5 N., S. 18 on N.E.

N. 10 W., S. 19 on S.E.

N. 11 W., S. 24 on S.W. and

S. 13 on N.W. faces, with 3 notches on N. and

S. edges; and raising a mound of stones, 1 1/2 ft. high, 2

ft. base, W. of corner. This impracticable.

(No traces of old bearing tree remaining.)

I ran, S. on a random line between Secs. 19 and 24

To old quarter sec. cor. which is a post set firmly in the  
ground, marked and witnessed as described by the surveyor

General.

Thence I ran

N. on a true line between Secs. 19 and 24

Ascend over rolling land

Head bears E. and W.

Head bears N.E. and S.W.

The corner to Secs. 13, 18, 19 and 24.

from the quarter section corner I continue south

To a point 3 1/2 m. W. of old corner to Secs. 19, 24, 25 and 30

where I found a badly decayed post, in an old earth mound.

I destroyed same and to remark corner, also to establish cor.  
No. 47 on boundary of San Gabriel Forest Reservation.

40.05

40.00

27.00

11.50

40.00

Boundary line of San Gabriel Forest Reservation  
 1.5 N., S. 19 on N.E.  
 S.G.V.R. 47 R.10 W., S.30 on S.E.  
 R.11 W., S.25 on S.W. and  
 S.24 on N.W. faces and dug pits 36x36x12 inches  
 N. and S. of post, 4 ft. distant and raised an earth  
 mound 1 1/2 ft. high, 5 ft. base around post.  
 Thence I run  
 N. 0°03' W. on a true line between Secs. 19 and 24. Ascend.  
 Top of ridge, 100 ft. above section corner, bears N. and W.  
 Descend.  
 20.30 Dry canon, 50 lks. wide, 425 ft. below top of ridge.  
 Course E. Ascend.  
 26.05 Top of spur 100 ft. above canon bears N. 80° W., and S. 80° E.  
 Descend.  
 32.05 Base of spur, 150 ft. below top, bears N. 40° W. and S. 80° E.  
 and over rolling land.  
 40.05 The quarter section corner  
 land, mountains and rolling  
 soil and 3rd rate  
 scattering juniper timber  
 Dense undergrowth of same and yucca 80.05 chs.  
 Mountains land 32.05 chs.

-----

Having definitely established the position of corner to  
 Secs. 19, 24, 25 and 30. I proceed, according to instructions.  
 N. on a true line between Secs. 24 and 25. Descend.  
 6.50 Having 6 lks. wide, 100 ft. below section cor. course N.  
 Base of low red spur, ascend.  
 26.00

Boundary line of San Gabriel Forest Reservation  
T. 5 N., R. 11 W., S. 8 N.

32.00 Top of spur, 150 ft. above ravine bears N. 10° W. and

S. 10° E. and along N. face of main ridge.

40.00 Set a juniper post 3 ft. long, 3 inches square with marked

stone 24 inches in the ground for quarter sec. cor. marked

S.G.P.R. on S. face

1/4 S. on N. face

and raised a mound of stone 1 1/2 ft. high, 2 ft. base N.

of corner. Pits impracticable.

49.75 Top of ridge, 100 ft. above quarter sec. cor., bears N.E.

and S.W. Descend.

55.00 Wash, 50 lks. wide, 125 ft. below top of ridge.

course N. 20° E. continue descent.

74.50 Wash, 30 lks. wide, 100 ft. below last wash, course N.E.

Ascend.

80.00 Set a juniper post, 3 ft. long, 4 inches square, with marked

stone, 12 inches in the ground for cor. to sees. 23, 24, 25 and

26. Marked

T. 5 N., S. 24 on N.E. S.G.P.R.

R. 11 W. S. 25 on S.E.

S. 26 on S.W. and

S. 23 on N.W. faces; with 1 notch on N. and 2 notches

on S. edges; and raised a mound of stone 1 1/2 ft. high, 2 ft.

base, N. of corner.

Pits impracticable.

Land mountainous.

Soll end and 3rd rate

Scattered juniper timber

Dense undergrowth of juniper.

Mountainous land, 80.00 chs.

N. on a true line between sees. 23 and 26.

Ascend over a succession of broken hills and small washes.

Boundary line of the San Gabriel Forest Reservation  
T. 5 N., R. 11 W., S. 8 N.

40.00 Top of spur, 100 ft. high, bears N. and S. and set a juniper post 3 ft. long, 3 inches square with marked stone, 24 inches in the ground for quarter section cor. marked 1/4 S. on N. face and raised a mound of stone 1 1/2 ft. high, 2 ft. base, N. of corner.  
Pits impracticable.  
Post also marked S.G.F.R. on S. face.

48.00 Descend  
Cannon, 25 lbs. wide, 150 ft. below quarter section, course N.

50.00 ascend.  
Top of spur, 100 ft. above cannon, bears N. and S. Descend.

53.00 Cannon, 30 lbs. wide, 100 ft. below top of spur, course N.

56.00 ascend.  
Top of spur, 150 ft. above cannon, bears N. and S. Descend.

59.00 Cannon, 40 lbs. wide, 150 ft. below top of spur, course N.

75.00 ascend.  
Top of spur, 150 ft. above cannon bears N. and S. Descend

80.00 Set a juniper post, 3 ft. long, 4 inches square, with marked stone, 24 inches in the ground for corner to Secs. 22, 23, 26, 27.

Marked T. 5 N., S. 23 on N.E. S.G.F.R.

R. 11 W., S. 26 on S.E.

S. 27 on S.W. and

S. 28 on N.W. faces with 2 notches on S. and E.

edges; and raised a mound of stone, 1 1/2 ft. high, 2 ft. base

W. of corner.

Pits impracticable.

Land mountainous.

Soil red and 3rd rate, sandy and stony.

Scattering of juniper timber

Dense undergrowth of juniper.

Mountainous land, 80.00 chs.

Boundary line of San Gabriel Forest Reservation  
T.S.M., N.11 W., S.B.M.

W. on a true line between Secs. 22 and 27. Descend.

2.50  
Wash, 20 lks. wide, 50 ft. below section corner, course  
N. 80° W. Ascend

32.25  
Top of ridge, 250 ft. above wash, bears N.W. and S.K. Descend.

40.00  
Set a juniper post, 3 ft. long, 5 inches square, with marked  
stone, 24 inches in the ground, for quarter sec. cor. marked  
S.G.M.H. on S. face

1/4 on N. face

due pits 12x12 inches E. and W. of post, 3 ft. deep, and  
raised a mound of earth, 3 1/2 ft. base, 1 1/2 ft. high, N.  
of corner.

Ascend.

52.00  
Top of ridge, 100 ft. above quarter sec. cor. bears E. and W.  
Thence along same

62.00  
To edge of perpendicular dirt, 75 ft. high, which it is  
impossible to chain. Set a juniper post, 3 ft. long, 3  
inches square, with marked stone, 24 inches in the ground for  
witness point.

Marked W.C. on N. face; and raised a mound of stone 1 1/2  
ft. high, 8 ft. base, N. of corner.

With impracticable.

To avoid dirt I offer as follows:

N. 33 1/2° W. 2.33 chains.

N. 31 1/2° W. 5.88 chs.

N. 13.73 chains to true line; thence S. 6.98 chs. to  
true point for corner to Secs. 21, 22, 27, 28 at

To mark which and to establish corner No. 46 on Bdy. of San  
Gabriel Forest Reservation, I set a square hollow iron post,  
filled with cement, 3 ft. long, the sides 4 inches wide, at  
the top, measuring to 12 inches wide at the bottom, 12 inches  
in the ground

46.00	Top of spur, 100 ft. above gulch, bears N. 25° E., and S. 25° W. Descend.
40.50	Spur. Ascend. Gulch, 10 lks. wide, course N. 25° E., 150 ft. below top of pits impracticable.
38.00	Top of spur, 120 ft. above wash, bears N. and S. Descend. Set juniper post, 3 ft. long, 3 inches square, with marked stone, 24 inches in the ground, for quarter section corner. Marked S.O.R.M. on S. face and 1/4 S. on N. face and raised stone mound, 1 1/2 ft. high, 2 ft. base N. of cor.
31.00	Wash, 20 lks. wide, 100 ft. below top of spur, course N. Ascend.
26.50	Top of spur, 100 ft. high, bears N. 10° E. and S. 10° W. Descend. From head of Little Rock Creek to Alpine.
18.15	Irrigation ditch, 8 inches wide, 4 inches deep, course N.W. Head bears N. and S.
12.15	Head bears N. and S.
9.00	Leave wash and ascend
3.25	Center of wash of Little Rock Creek, course N. Descend.
	W. on a true line between Secs. 21 and 22
	-----
	Marked T. 5 N., S. 22 on N.E. S.O.R.M. 46 R. 11 W., S. 27 on S.E. S. 28 on S.W. and S. 21 on N.W. faces; dug pits 36x12 inches N. and S. of post, 4 ft. distant and raised an earth mound, 1 1/2 ft. high, 5 ft. base around post. Land mountains
	Soil sand and fine silt, sandy and stony
	Scattered juniper timber
	Some undergrowth of sage and yucca
	Mountains land 80.00 chains.
	Boundary line of San Gabriel Forest Reservation T. 5 N., R. 11 W., S. B.M.



52.50 Wash, 75 lks. wide, 150 ft. below top of spur, course N. 80° E. Ascend  
 Top of spur 100 ft. above wash, bears N. 40° E. and S. 40° W. Descend.  
 75.00 Wash, 10 lks. wide, 170 ft. below top of spur, course N. Ascend  
 Top of spur, 100 ft. above wash, bears N. 45° E. and S. 45° W. Set a juniper post, 3 ft. long, 4 ins. square, with marked stone 24 inches in the ground for corner to base. 20, 21, 22 and 29 marked  
 1. 5 N., S. 21 on N.E. S.G.F.M.  
 N. 11 W., S. 28 on S.E.  
 S. 29 on S.W.  
 S. 20 on N.W. faces with 4 notches on E. and 2 notches on S. edges and raised mound of stone 2 ft. high, 3 1/2 ft. base, N. of corner.  
 pits impracticable  
 Land mountainous  
 Soil 3rd and 4th rate  
 Scattered juniper timber  
 Undergrowth of juniper  
 Mountainous land 80.00 obs.

Boundary line of San Gabriel Forest Reservation  
 T. 5 N., R. 11 W., S. 8 N.

3.00 Wash, 25 lks. wide, 100 ft. below section corner, course N. 45° E. Ascend  
 Top of spur, 150 ft. above wash, bears N. 80° E. and S. 80° W. Descend  
 21.00 Wash, 25 lks. wide, 100 ft. below top of spur, course N. 45° E. Ascend  
 22.00 Over brushy mass, continue ascent.

Boundary line of San Gabriel Forest Reservation  
T. 5 N., R. 11 W., S. 6 N.

38.50 Top of spur, 120 ft. above wash, bears N. 70° E. and S. 30° W.

Descend.

40.00 Set a juniper post, 3 ft. long, 3 inches square with marked

stone 24 inches in the ground for quarter sec. corner, marked

S.G.F.R. on S. face, 1/4 S. on N. face and raised a mound of

stone, 1 1/2 ft. high, 2 ft. base, N. of corner.

Pls impracticable.

41.00

Gravel 50 ft. below top of spur, 10 lks. wide, course N. 45° E.

Ascend.

43.00 Top of spur, 100 ft. above wash, bears N. 45° W. and S. 45° E.

Descend.

47.50

Canada, 50 lks. wide, 75 ft. below top of spur, course N. 45° W.

Ascend

55.50

Top of spur, 120 ft. above Canada, bears N. 20° E. and S. 20° W.

Descend.

65.00

Wash, 20 lks. wide, 100 ft. below top of spur, course N. 20° E.

Ascend.

72.00

Top of spur, 110 ft. above wash, bears N. 20° E. and S. 20° W.

Descend.

78.00

Wash, 20 lks. wide, 75 ft. below top of spur, course N. Ascend

80.00 Set a juniper post, 3 ft. long, 4 inches square, with marked

stone, 24 inches in the ground, for corner to Secs. 19, 20, 29

and 30.

Marked T. 5 N., S. 20 on N.E. S.G.F.R.

N. 11 W., S. 29 on S.E.

S. 30 on S.W. and

S. 19 on N.W. face, with 5 notches on E. and 2 notches

on S. edge, and raised a mound of stone, 2 ft. high, 3 1/2

ft. base, N. of corner.

Pls impracticable.

70.50	Top of spur, 200 ft. above canon, bears N.E. and S.W. Descend.
	Ascend.
61.00	Canada 150 ft. below top of spur, 90 lks. wide, course N. 20° E. S. 45° W. Descend.
52.00	Top of spur, 200 ft. above Canada, bears N. 45° E. and N. 10° E. Ascend.
45.50	Canada, 100 lks. wide, 90 ft. below top of spur, course
43.00	Top of spur, 180 ft. above Canada, bears N. and S. Descend.
	Post also marked S.G.L.R. on E. face
	Pits impracticable.
	2 ft. base, N. of corner.
	1/4 S. on N. face and raised a mound of stone 1 1/2 ft. high, 24 inches in the round, for quarter section corner, marked
40.00	Set an oak post, 4 ft. long, 4 inches square, with marked stone, Leave Canada at base of spur, ascend.
36.00	Wagon road bears N. and S.
31.80	Canada, 100 ft. below top of spur, course N. and through same
30.50	Descend
25.00	Top of spur, 175 ft. above canon, bears N. 10° W. and S. 10° E. Ascend
14.40	Canon, 15 lks. wide, 50 ft. below mesa, course N. 10° W. To edge of brushy mesa, descend.
10.00	To edge of brushy mesa, bears N. and S. and over same
1.75	Ascend.
	N. on a true line between 3000. 19 and 30.

-----

Land mountainous  
 Soil 3rd rate  
 Gathering juniper timber  
 Dense undergrowth of juniper  
 Mountainous land, 80.00 chs.

Boundary line of San Gabriel Forest Reservation  
 T.S.M., R. 11 W., S. 8. N.

post Gene and the mound and pits carefully disassembled.  
To old quarter sec. cor. which I find in bad condition, the  
E. on a random line between Secs. 19 and 30.  
N. 11. W., previously re-established by me, I run

39.60

from the corner to Secs. 19, 24, 25 and 30 on E. bdy. T. 5. N.,  
previously described.  
at the corner to Secs. 19, 24, 25 and 30 on E. bdy. T. 5. N., R. 11. W.,  
let etc. 50 27' S. on the dept. etc and mark a true meridian  
Oct. 6th at 8h 00m A.M., 1. m. t. I set off 34-30' N. on the  
Through T. 5 N., R. 10 W., S. B. M.

October 5, 1896.

Mountainous land, 77.95 acs.  
Dense undergrowth of cane and yucca.  
Scattering juniper timber  
Soil 3rd rate.

Land mountainous.

raised a mound of earth, 1 1/2 ft. high, 5 ft. base around post.  
The pits 36x36x12 inches, S. and E. of post, 4 ft. distant, and  
S. O. R. 45 S. 30 on S. faces,

S. 19 on N. and

O. O. on west

on E.

boundary of San Gabriel Forest Reservation marked T. 5. N., R. 11 W.,  
Secs. 19 and 30, T. 5. N., R. 11 W., also for corner No. 45 on  
at the bottom, 12 inches in the ground, for closing corner to  
the sides 4 inches wide at the top, increasing to 12 inches wide  
square, hollow, iron post, filled with cement, etc., 3 ft. long,  
Secs. 24 and 25, previously re-established by me, and set a  
Intersect E. bdy. T. 5. N., R. 12 W., 21.04 acs. N. of corner to

77.95

Boundary line of San Gabriel Forest Reservation  
T. 5 N., R. 11 W., S. B. M.

Boundary line of San Gabriel Forest Reservation  
T. 5 N., R. 10 W., S. 8 N.

To re-establish same, I set cedar post 2 1/2 ft. long, 4 inches square with marked stone 24 inches in the ground, marked 1/4 S. on N. face, dug pits 12x12 inches E. and W. of post, 3 ft. distant and raised mound of earth, 1 1/2 ft. high, 3 1/2 ft. base, N. of corner, also marked post S.G.F.R. on S. face

These W. on a true line between Secs. 19 and 30, over rolling brushy woods  
Leave now, bears N. and S. Descend

22.20  
26.45  
27.60  
Ascend  
Wash, 15 lks. wide, 50 ft. below mark, course N. 60° E. Ascend  
Top of spur, 50 ft. above wash, bears N. 10° E. and S. 10° W.

39.60  
Descend.  
The corner to Secs. 19, 24, 25 and 30.

38.34  
From the quarter sec. corner I continue E. to a point 45 lks. S. of corner to Secs. 19, 20, 29 and 30, which is a post badly decayed, in small mound of earth, no trace of old bearing trees. I destroyed old corner and to re-mark same, set a sandstone, 24 x 6 x 6 inches, 18 inches in the ground, marked with 2 notches on S. and 5 notches on E. edges and raised a mound of stone, 1 1/2 ft. high, 2 1/2 ft. base, W. of corner.

Also marked stone S.G.F.R. on S. face

1 house bears N. 20° E., 2.00 chains distant.  
Also marked stone S.G.F.R. on S. face

These S. 89-20' W. on a true line between Secs. 19 and 30  
Descend over rolling, brushy woods.

4.94  
Dry wash, 25 lks. wide, course N. 10° E.

8.84  
Dry wash, 50 lks. wide, course N. 10° E.

19.44  
Dry arroyo, 75 lks. wide, course N.

26.44  
Wagon road, bears N. W. and S. E.

38.34  
The quarter section corner.

Boundary line of San Gabriel Forest Reservation  
 T.S.N.R.10 W., S.B.M.

Land mountains and rolling

Soil second and third rate, stony

Scattered juniper timber

Dense undergrowth of sage and yucca 77.94 obs.

Mountainous land, 17.40 obs.

From the corner to Secs. 19, 20, 29 and 30.

I run

E. on a random line between Secs. 20 and 29

40.00 After diligent search, being unable to find any trace of old

1/4 Sec. corner, I set temporary 1/4 sec. corner and continue

E.

80.00 After diligent search, being unable to find any trace of old

corner to Secs. 20, 21, 28 and 29, I set temporary Sec. corner

and continue

E. on a random line between Secs. 21 and 28.

40.10

To a point 30 lks. N. of old quarter sec. corner, where I find

a badly decayed stake, in a small earth mound, with traces of

pit. I destroyed same and to remark corner, set a juniper

post, 4 ft. long, 4 inches square, with marked stone 24 inches

in the ground, marked S.C.F.R. on S. face, 1/4 S. on N. face,

dig pits 18x18 inches N. and W. of post, 3 ft. distant, and

raised a mound of earth, 1 1/2 ft. high, 2 ft. base, N. of

corner.

A house bears E. 30° E. 15.00 chains distant.

From corner I run

N. 89° 51' W. on a true line between Secs. 21 and 28,

over rolling, brushy mesa.

1.60

Gross irrigating ditch, course N.

7.20

Gross irrigating ditch, course N.

15.35

Gross irrigating ditch, course N.

16.60

Enter wash, course N. 10° E.

18.60

Leave wash, course N. 10° E.

30.10

Enter plowed ground bears N. and S.

40.05 Along County Road. The true point for quarter sec. corner falling in County Road, not a suitable place to mark, I run due S., 25 lks. to S. side of road and set a juniper post, 3 ft. long, 3 inches square, with marked stone 24 inches in ground for witness corner to quarter section corner marked S.O.R.H. on S. face, and W.O. 1/4 S. on W. face, dug pits 18x18x12 inches E. and W. of post, 3 ft. deep and raised a mound of earth, 1 1/2 ft. high, 2 ft. base, N. of corner.

N. 29 on S.W. and S. 29 on a true line between Secs. 28 and 29. Plowed land, 8.70 ams. Undergrowth of cane and yucca, 31.40 ams. Reentering juniper timber Land rolling Soil second and third rate A house bears N. 30° E. 4.00 ams. distant. of corner.

38.80 Leave plowed ground, bears N. and S. 38.95 Wagon road bears N. and S. 39.13 Irrigation ditch, 2 ft. wide, 8 inches deep, course N. 40.10 The true point for corner to Secs. 20, 21, 28 and 29 falling in County Road, bears W. and N. 29° E. I run due S. 50 lks. and set a juniper post 3 ft. long, 4 ins. square with marked stone 24 inches in the ground on S. side of County Road, for witness corner to Secs. 20, 21, 28 and 29, marked W.O.T. 5 M., S. 21 on N.E. S.O.V.H. R. 10 W., S. 28 on S.E. S. 29 on S.W. and S. 20 on N.W. faces with 2 notches on S. and 4 notches on E. edges; dug pits 18x18x12 inches in each sec. 3 1/2 ft. deep and raised a mound of earth 4 ft. base, 2 ft. high, W. of corner.

Boundary line of San Gabriel Forest Reservation  
T. 5 N., R. 10 W., S. R. M.