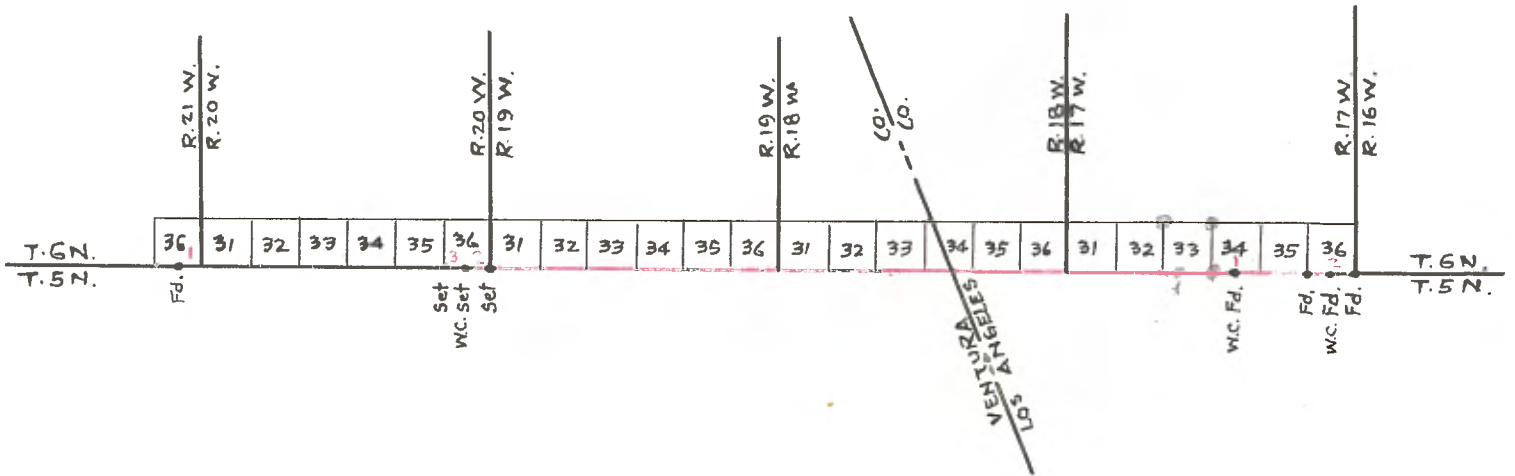


FIELD NOTES  
OF  
FIRST STANDARD PARALLEL NORTH  
THROUGH RANGES 16, 17, 18, 19, 20 WEST

Copied and checked from notes  
on file at U. S. Cadastral En-  
gineer's Office, Glendale, Cal-  
ifornia, by A. C. Johnson and  
A. J. Baritell, June 11, 1934.

Vol. 479:2-4



RESURVEY OF FIRST STANDARD PARALLEL N. THROUGH R. 20 W.

The standard  $\frac{1}{4}$  Section Corner of Sec. 36, T. 6 N., R. 21 W. is a stake, 3 ins. square, 2 ft. above stone mound, 3 ft. base, 1 ft. high, marked:  $\frac{1}{4}$  S. on N. face. In place of stake

Set an Iron post 3 ft. long, 1 in. diam. 24 ins. in the ground for standard  $\frac{1}{4}$  Sec. Cor. Sec. 36, with brass cap marked

S C  
 $\frac{1}{4}$  S 36  
1927

and rebuild

the mound of stone 3 ft. base and  $1\frac{1}{2}$  ft. high N. of cor.

Thence E. on a random line on the first standard parallel N. through R. 20 and 21 W., setting temporary corners at intervals of 40 chs. and making unsuccessful search for original corners at such distances.

520.00 Set temporary corner for standard corner Rs. 19 and 20 W. Continue measurement on random line on the first standard parallel N. through Rs. 19, 18 and 17 W., setting temporary corners at intervals of 40 chs., and making unsuccessful search for original corners at such distances.

1782.23 Fall 18.24 chs. N. of Witness Corner to standard  $\frac{1}{4}$  Sec. Cor. Sec. 34, T. 6 N., R. 17 W., which is a rotted stake in a mound of stone 3 ft. base and 2 ft. high.

Set an iron pipe 3 ft. long, 1 in. diam., 12 ins. in the ground to bedrock, marked (X) stone alongside of pipe in the mound of stone, for witness corner to standard  $\frac{1}{4}$  sec. cor. of Sec. 34, with brass cap marked

S C  
 $\frac{1}{4}$  S 34 W C  
1927

This witness corner was set at 11.00 chs. W. of true

point for corner. To further identify this as the original witness corner retrace E. on first standard parallel N. through R. 17 W. and find the original standard corner Secs. 35 and 36, the witness corner to standard  $\frac{1}{4}$  Sec. Cor. 36, and standard township corner of Rs. 16 and 17 W. in correlative positions.

At proportionate point between the  $\frac{1}{4}$  Sec. Cor. on S. bdy. of Sec. 36, T. 6 N., R. 21 W. and the point for  $\frac{1}{4}$  Sec. Cor. on S. bdy. of Sec. 34, T. 6 N., R. 17 W., which point is 1252.35 chs. W. and 12.82 chs. N. of the witness corner to standard  $\frac{1}{4}$  Sec. Cor. of Sec. 34, T. 6 N., R. 17 W. Set an iron pipe 3 ft. long, 3 ins. diam., 30 ins. in the ground for standard corner of T. 6 N., Rs. 19 and 20 W. with brass cap marked

S C  
 R 20 W          R 19 W  
  S 36            S 31  
 1927

and raised a

mound of stone 4 ft. base,  $2\frac{1}{2}$  ft. high, N. of cor. Thence N.  $89^{\circ}25'$  W. on a true line on S. bdy. of Sec. 36. Over rough mountainous land, through dense brush. Descend 45 ft. over S.W. slope.

4.70 Ravine course S.W.; ascend 20 ft. along S. slope.  
 13.40 Small spur, slopes S.; descend 250 ft.  
 36.15 Top of bluffs facing S.W.; descend 175 ft.  
 38.90 Foot of bluffs, brs. S.E. and N.W., enter Sespe Canyon.  
 39.16 Set an iron pipe 3 ft. long, 1 in. diam. 28 ins. in the ground for witness standard  $\frac{1}{4}$  Sec. Cor., with brass cap marked

S C  
W C  $\frac{1}{4}$  S 36  
 1927

and raise

a mound of stone 4 ft. base,  $2\frac{1}{2}$  ft. high, N. of corner. A (X) cross and BO marked on boulder 12x8x7 ft. above

ground brs. N.  $70\frac{1}{2}^{\circ}$  W. 27 lks. dist.

An oak 18 ins. diam. brs. S.  $54\frac{3}{4}^{\circ}$  E. 547 lks. dist.  
marked BT

- 40.00 Enter wash of Sespe Canyon, course S.E.  
40.76 True point for standard  $\frac{1}{4}$  Sec. Cor. falls in Wash  
course S.E.  
41.80 Center of Sespe Creek 35 lks. W. Course S.E.  
43.00 Foot of bluffs, right wall of Sespe Canyon, brs. N.W.  
and S.E. Ascend 190 ft.  
47.70 Top of bluffs, face N.E.; continue ascent 660 ft. over  
N.E. slope.  
47.90 Trail, on spur sloping N.E.; brs. N.W. to Hot Springs  
and S.E. to highway.  
49.50 Ravine, course N.E.  
81.52 Proposed point, set an iron pipe 3 ft. long, 2 ins. diam.,  
30 ins. in the ground for standard corner of Secs. 35 and  
36, with brass cap marked

S C

T 6 N	R 20 W
S 35	S 36
<hr/>	
1927	

and raise

a mound of stone 2 ft. base,  $1\frac{1}{2}$  ft. high N. of cor.

Corner comes on spur sloping N.E.

Land, rough mts.

Soil - rocky, gravelly, loam and shale.

3rd and 4th rate, no timber.

Undergrowth of chemisal, manzanita, chaparral, oak brush.