

DEPENDENT RESURVEY OF THE
SOUTH BOUNDARY OF FRACTIONAL
T. 9 N., R. 16 W.

J. S. 2408.

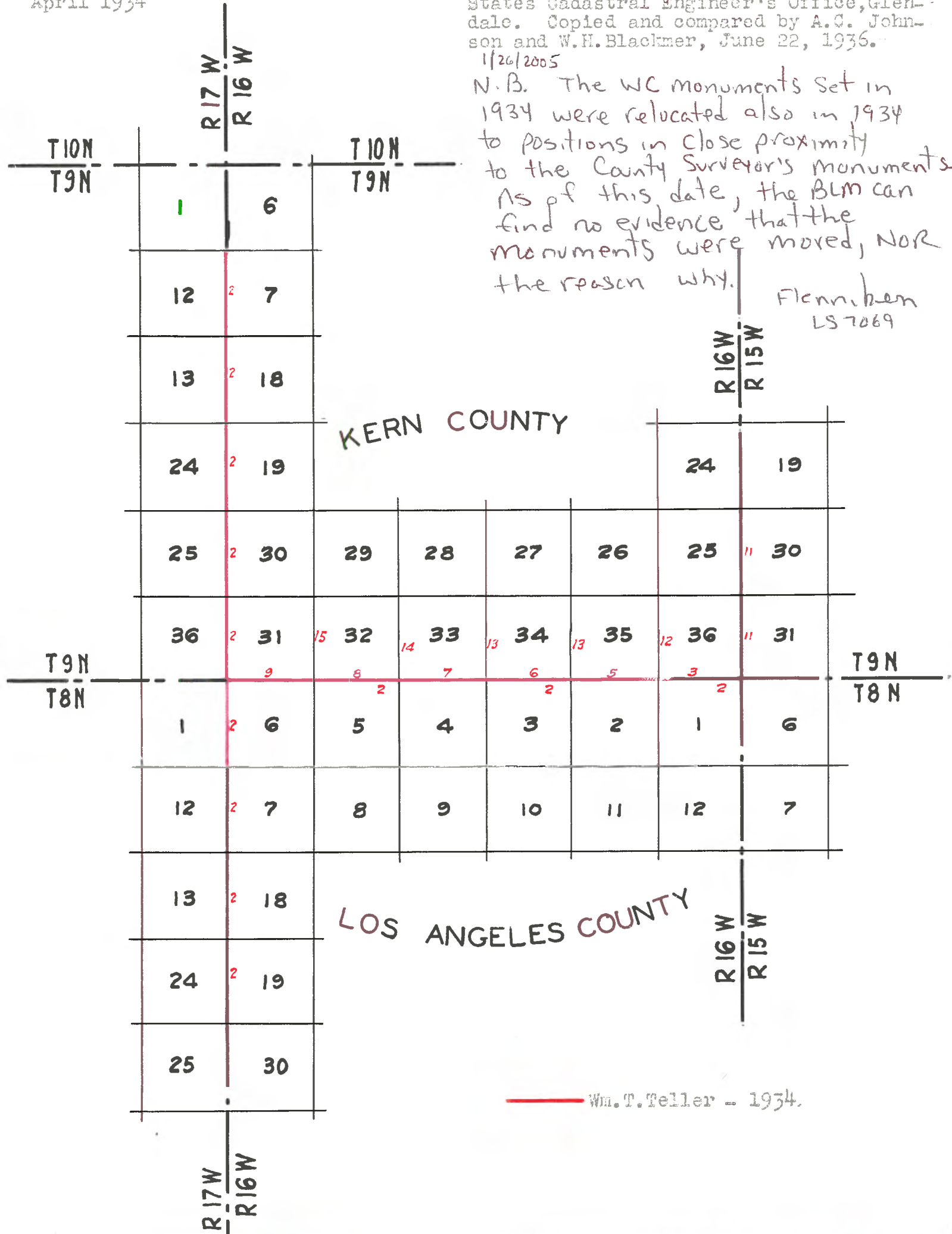
Book G
Pages 2-9
Wm. T. Teller
April 1934

Copied from notes on file at the United States Cadastral Engineer's Office, Glendale. Copied and compared by A.C. Johnson and W.H. Blackmer, June 22, 1936.

1/26/2005

N.B. The WC monuments set in 1934 were relocated also in 1934 to positions in close proximity to the County Surveyor's monuments. As of this date, the BLM can find no evidence that the monuments were moved, NOR the reason why.

Flemmiken
LS 7069



Wm. T. Teller - 1934.

**DEPENDENT RESURVEY OF THE SOUTH BOUNDARY
OF FRACTIONAL T.9 N., R.16 W.**

CERTIFICATE OF APPROVAL

Office of U.S. Supervisor of Surveys
Denver, Colorado, May 24, 1935.

The foregoing field notes of the dependent resurvey of the boundary of Rancho La Liebre, from Cor. #17 to Cor. #26; dependent resurvey of the exterior and subdivisional lines of T.9 N., R.16 W. of S.B.M., in State of California

Executed by (William T. Teller) U.S. Transitman under special instructions dated Nov. 16, 1933, having been critically examined and the necessary corrections made prior to their certification by the engineer, the said field notes and the resurvey therein described are hereby approved.

Frank M. Johnson

DEPENDENT RESURVEY OF THE SOUTH BOUNDARY
OF FRACTIONAL T.9 N., R.16 W.

This line was originally surveyed by Deputy R.W. Norris in 1853. In 1855 Deputy Norris made a resurvey of the line. In 1931 the line, at the time a part of the boundary between Los Angeles and Kern Counties, was surveyed by the engineers of the Los Angeles Co. Surveyor's Office.

From the corner of Townships 8 & 9 N., R. 15 & 16 W.

West on a random line between Townships 8 & 9 N., R.16 & 17 W., searching for evidence of the Norris survey and setting temporary quarter corner and section corners, at the record distance therefor. I find no trace of the Survey or the corners thereof to,

845.67 A point 5.12 chains North of the quarter section corner of 5 & 32 T.8 & 9 N., R.17 W., which is an old earth mound from which

A cottonwood 40 inches in diameter bears N. 10° 00' W. 5.68 chains distant. The markings are rotted out. A seep, no flowing water, bears S. 26° 00' W. about 6 chains distant. (Record calls for spring).

- - - - -

The corner to Sections 19, 24, 25, 30 on the line between Townships 8 N., R.16 & 17 W. is a concrete monument 6 inches square at surface of the ground, with a brass tablet 3 inches in diameter marked

LOS ANGELES CO.
T.8 N.
S 24 | S 19
S 25 | S 30

This monument was set in place of the stone corner of Sections 19, 24, 25 & 30 and is accepted as the corner, whence I ran North on a random line between T.8 & 9 N., R.16 & 17 W. searching for evidence of the original survey, and setting temporary corners at the record distances for the corners of the original survey. I find no trace of the original survey to,

740.21 A point 5.12 chains East of the point at 13.00 chains between Sections 1 and 6 T. 9 N., R. 16 & 17 W., as described in the record of the original survey, which point is marked with an old stone mound,

DEPENDENT RESURVEY OF THE SOUTH BOUNDARY
OF FRACTIONAL T. 9 N., R. 16 W.

from which

A pinon, 28 inches in diameter bears S. 81° 30' E. 62 links
distant, marked IX XVI XVIII B T

A pinon 20 inches in diameter bears S. 6° 30' W. 83 links
distant, marked IX XVII XVIII B T

- - - - -

The proportionate point for the corner of T. 8 & 9 N., R. 16 & 17 W., as based upon the retracements described above, falls within 4 links of the corner of the same T. 8 & 9 N., R. 16 & 17 W., as established by L.A. Co. Inasmuch as this corner has been used in locating numerous claims to the South, and in view of the slight variation of the two points, I accept this corner, as established by L.A. Co. as the corner of Townships 8 & 9 N., R. 16 & 17 W.

Retracement of the South boundary of T. 9 N., R. 16 W. shows the proportionate points for the $\frac{1}{4}$ section and section corners thereon to be occupied by substantial ^{concrete} monuments, bearing brass tablets, marked and described by Los Angeles County Surveyor's Office. These monuments, set at the proportionate points become the corners of the sections for which they are marked.

Witness corners, hereinafter described were established at each $\frac{1}{4}$ section and section corner.

- - - - -

From the corner of Townships 8 & 9 N., R. 15 & 16 W. which is a concrete monument 10 inches square, set to ground level, and occupying the position of the original corner of T. 8 & 9 N., R. 15 & 16 W. with a brass tablet 3 inches in diameter marked

KERN CO.
T. 9 N
836 | 8 31
8 1 | 8 6
T 8 N
LOS ANGELES CO.

Lying at the surface of the ground, alongside the monument are several pieces of the old mesquite stake.

DEPENDENT RESURVEY OF THE SOUTH BOUNDARY
OF FRACTIONAL T.9 N., R.16 W.

For description of witness corner see notes of East boundary
of Section 36.

Thence from the corner

S. 89° 54' W. on a true line between Sections 1 and 36.

Over nearly level desert through mesquite and low sage.

18.40 Peer road bears Northeast and Southwest

40.25 Set an Iron Post 3 ft. long, 1 inch in diameter, 30 inches in the
ground for a witness $\frac{1}{4}$ section corner with brass cap marked

W 8 36
 $\frac{1}{4}$ C 8 1
1934 raised a mound of stone,

3 ft. base, 2 ft. high, north of corner.

40.27 The $\frac{1}{4}$ section corner at the proportionate point

A concrete monument 8 inches square, set to ground level
with a brass tablet 3 inches in diameter, marked

KERN CO.
T 9 N
36
1
 $\frac{1}{4}$ Sec. Cor.
T 8 N
LOS ANGELES CO.

80.54 The corner of Sections 1, 2, 35, 36 at the proportionate point.

A concrete monument 8 inches square, set to ground level,
with brass tablet 3 inches in diameter, marked

KERN CO.
T 9 N
35 36
2 1
T 8 N
LOS ANGELES CO.

For description of the witness corner see line between
Sections 35 and 36.

Land, nearly level desert.

Soil, loam, sandy, 2nd rate.

Timber, none; undergrowth, mesquite, sage.

- - - - -

DEPENDENT RESURVEY OF THE SOUTH BOUNDARY
OF FRACTIONAL T.9 N., R. 16 W.

From the corner of Sections 1, 2, 35 and 36

S. 89° 54' W. on a true line between Sections 2 and 35

Over nearly level desert, through sage and mesquite.

32.60 Peer road bears North and South.

35.90 Telephone line bears N. 60° E. and S. 60° W.

36.20 Graded road, bears N. 60° E. & S. 60° W. to German and Resamond.
Oil pipe line along south side of graded road bears S. 60° W. to
Neenach and Quail Lake Pumping Station and N. 60° E. to Antelope
Pumping Station.

40.25 Set an iron post 3 ft. long 1 inch in diameter, 30 inches
in the ground for the witness corner with brass cap marked

W 8 35
1 0 8 2
1934 Raised a mound of stone

3 ft. base, 1½ ft. high, north of corner.

40.27 The ¼ section corner at the proportionate point
A concrete monument 8 inches square, set to ground level with
brass tablet 3 inches in diameter, marked

KERN CO.
T 9 N
35
2
T 8 N
¼ Sec. Cor.
LOS ANGELES CO.

60.00 Enter scattering joshua timber bears North and Southwest.

76.05 U.S. Geological Survey Bench Mark, unnumbered, bears North 2 links
distant.

80.54 The corner of sections 2, 3, 34 and 35 at the proportionate point
A concrete monument 8 inches square, set to ground level with
brass tablet 3 inches in diameter, marked

KERN CO.
T 9 N
34 | 35
3 | 2
T 8 N
LOS ANGELES CO.

For description of the witness corner see line between
Sections 34 and 35.

Land, nearly level desert.

Soil, loam, sandy; 2nd rate.

Timber, joshua; undergrowth, sage, mesquite.

DEPENDENT RESURVEY OF THE SOUTH BOUNDARY
OF FRACTIONAL T.9 N., R.16 W.

From the corner of Sections 2,3,34 and 35

S. 89° 54' W. on a true line between Sections 3 and 34

Over nearly level desert, through joshua timber and sage and mesquite brush.

1.00 Poor road bears S. 60° E. and N. 60° W.

40.25 Set an iron post 3 ft. long 1 inch in diameter, 30 inches in the ground for the witness corner with brass cap marked

$$\begin{array}{r} W \quad S \quad 34 \\ \frac{1}{4} \quad 0 \quad S \quad 3 \\ 1934 \end{array}$$
 Raised a mound of stone

3 ft. base, 2 ft. high, north of corner.

40.27 The $\frac{1}{4}$ Section Corner at the proportionate point

A concrete monument 8 inches square, set to ground level with brass tablet 3 inches in diameter, marked

KERN CO.

$$\begin{array}{r} T \quad 9 \quad N \\ 34 \\ \hline 3 \\ T \quad 8 \quad N \\ LOS \text{ ANGELES CO.} \end{array}$$

44.00 Enter dense joshua timber bears North and South.

60.10 Dry Wash 10 links wide. Course S. 10° E.

80.54 The corner of Sections 3,4,33,34 at the proportionate point
A concrete monument 8 inches square, set to ground level with brass tablet 3 inches in diameter, marked

KERN CO.

$$\begin{array}{r} T \quad 9 \quad N \\ 33 \quad | \quad 34 \\ \hline 4 \quad | \quad 3 \\ T \quad 8 \quad N \\ LOS \text{ ANGELES CO.} \end{array}$$

For description of witness corner see line between Sections 33 & 34.

Land, nearly level desert.

Soil, sandy loam, 2nd rate.

Timber, joshua; undergrowth, mesquite, sage, cacti.

- - - - -

DEPENDENT RESURVEY OF THE SOUTH BOUNDARY
OF FRACTIONAL T. 9 N., R. 16 W.

From the corner of Sections 3, 4, 33 & 34

S. 89° 54' W. on a true line between Sections 4 and 33

Over nearly level desert, through joshua timber and sparse undergrowth.

40.25 Set an iron post 3 ft. long, 1 inch in diameter, 30 inches in the ground for the witness ¹/₄ section corner, with brass cap marked

W 8 33
C 8 4
1934 Raised a mound of stone

3 ft. base, 2 ft. high, north of corner.

40.27 The ¹/₄ section corner at the proportionate point

A concrete monument 8 inches square, set to ground level with brass tablet 3 inches in diameter, marked

KERN CO.
T 9 N
33
4
¹/₄ Sec. Cor.
LOS ANGELES CO.

48.40 Leave timber and brush, enter sand dunes, bear North and South.

67.60 Road and telephone line bears North and South.

68.50 Los Angeles Aqueduct bears S. 1° 00' E. and N. 1° 00' W.

A 10 foot black steel conduit on concrete footings on surface of ground.

72.00 Leave sand dunes, enter low sage and mesquite bears North and South.

80.54 The corner of Sections 4, 5, 32 and 33 at the proportionate point, A concrete monument 8 inches square, set to ground level with brass tablet 3 inches in diameter, marked

KERN CO.
T 9 N
32 33
5 4
T 8 N
LOS ANGELES CO.

For description of witness corner see line between Secs. 32 & 33.

Land, nearly level desert.

Soil, loam, sand; 2nd and 4th rate.

Timber, joshua; undergrowth, mesquite, sage, cacti.

DEPENDENT RESURVEY OF THE SOUTH BOUNDARY
OF FRACTIONAL T. 9 N., R. 16 W.

From the corner of Sections 4, 5, 32 and 33

S. 89° 54' W. on a true line between Sections 5 and 32

Over nearly level desert, through scattering joshua and
sparse sage brush.

8.00 Enter sage and mesquite brush, bears North and South.

40.25 Set an iron pest 3 ft. long, 1 inch in diameter, 30 inches
in the ground for the witness $\frac{1}{4}$ section corner with brass cap
marked

$\frac{1}{4}$ W $\frac{8}{5}$ $\frac{32}{5}$
C 1934

Raised a mound of

stone, 3 ft. base, 2 ft. high, north of corner.

40.26 Old fence corner, whence fences bear South and West irregu-
larly S. 70° E.

40.27 The $\frac{1}{4}$ Section Corner at the proportionate point
A concrete monument 8 inches square, set to ground level with
brass tablet 3 inches in diameter, marked

KERN CO.

T 9 N

32

5

$\frac{1}{4}$ Sec. Cor.

T 8 N

LOS ANGELES CO.

Continue over level barren desert; along old fence line.

80.50 Fence corner whence fence bears S., W. & E.

80.54 The corner of Sections 5, 6, 31 and 32, at the proportionate point
A concrete monument 8 inches square, set to ground level with
brass tablet 3 inches in diameter, marked

KERN CO.

T 9 N

31 | 32

6 | 5

T 8 N

LOS ANGELES CO.

For description of witness corner see line between Sections
31 and 32

Land, nearly level desert.

Soil, loam, rocky in places, 2nd rate

Timber, joshua; undergrowth, mesquite, sage

DEPENDENT RESURVEY OF THE SOUTH BOUNDARY
OF FRACTIONAL T.9 N., R.16 W.

From the corner of Sections 5, 6, 31 and 32

S. 89° 54' W. on a true line between Sections 6 and 31

Over nearly level desert, through low sage and cactus along an old fence line.

0.10 Center of road, bears North to H. Cluff's Ranch and South to Neenach and main highway.

2.87 U.S. Geological Survey Bench Mark "Neenach" on line.

40.25 Set an iron post 3 ft. long, 1 inch in diameter, 30 inches in the ground for the witness corner, with brass cap marked,

W 8 31
C 8 6
1934

Raised a mound of stone

3 ft. base, 2½ ft. high, north of corner.

40.27 The ¼ Section Corner at the proportionate point,

A concrete monument 8 inches square, set to ground level with brass tablet 3 inches in diameter, marked

KERN CO.
T 9 N
31
6
T 8 N
¼ Sec. Cor.
LOS ANGELES CO.

79.45 Road, little used, bears North and South.

80.52 Old fence corner on line, whence fence bears North and South; East and West.

80.54 The corner of Townships 8 & 9 N., R.16 & 17 W. at the proportionate point as hereinbefore described,

A concrete monument 12 inches square, set to ground level, with brass tablet 3 inches in diameter, marked

KERN CO.
T 9 N
36 31
1 6
T 8 N
LOS ANGELES CO.

DEPENDENT RESURVEY OF THE SOUTH BOUNDARY
OF FRACTIONAL T.9 N., R.16 W.

At a point West 8 links distant set an iron post 3 ft. long,
3 inches in diameter, 30 inches in the ground, for the witness corner
of Townships 8 & 9 N., R. 16 & 17 W.; with a brass cap marked

	T 9 N	
R 17 W		R 16 W
S 36		S 31 W
S 1		S 60
1934		

Raised a mound of stone 4 ft. base, $3\frac{1}{2}$ ft. high, South of
corner.

Land, nearly level.

Soil, loam, rocky in places; 2nd rate.

Timber, none; undergrowth, sage, mesquite.

DEPENDENT RESURVEY OF EAST BOUNDARY OF
T. 9 N., R. 16 W.

This line was originally surveyed by Deputy R.W. Morris
in 1855.

From the corner of Townships 8 & 9 N., R. 15 & 16 W., as
hereinbefore described.

North on a random line between Sections 31 & 36.

39.94 A point 17 links East of the $\frac{1}{4}$ Section Corner. Thence from $\frac{1}{4}$ Sec. Cor.,
North on a random line between Sections 31 and 36 and Sections 25 & 30.

119.64 A point 60 links East of the corner of Sections 19, 24, 25 & 30.
Return to the corner of Townships 8 & 9 N., R. 15 & 16 W.; thence
North 0° 15' West on a true line between Sections 31 and 36.

Over nearly level desert, through sage and mesquite.

0.06 Set an iron post 3 ft. long 3 inches in diameter, 30 inches in the
ground, for the witness corner of T. 8 & 9 N., R. 15 & 16 W., with brass
cap marked

T 9 N	
R 16 W	R 15 W
S 36	S 31
S 1	S 6
T 8 N	
W 0	
1934	

Raised a mound of stone

3 ft. base, 2 $\frac{1}{2}$ ft. high, west of corner.

8.60 Peer road, bears N. 60° E. and S. 60° W.

39.94 The $\frac{1}{4}$ Section Corner of Sections 31-36, a badly decayed juniper
stake, 3 inches square, 1 ft. long, bearing the markings $\frac{1}{4}$ S
lying in old mound of stone.

In the center of old mound in place of stake

Set an iron post 3 ft. long, 1 inch in diameter, 28 inches in ground,
with old juniper stake alongside, for the $\frac{1}{4}$ section corner, with
brass cap marked

S 36	$\frac{1}{4}$	S 31
1934		

Raised a mound of stone

3 ft. base, 2 ft. high, west of corner.

XXXXXXXXXXXXXXXXXXXXXXXXXXXX

DEPENDENT RESURVEY OF SUBDIVISIONAL LINES OF
T. 9 N., R. 16 W.

Vol. Book G. Page 19
William T. Teller
April 1934

Dependent Resurvey of Subdivisional Lines of fractional
T. 9 N., R. 16 W. Re-establishing the survey executed by R.W. Morris,
U.S. Dep. Surv. in 1855.

From the corner of Sections 1, 2, 35 & 36 on the South boundary
of the Township as hereinbefore described.

N. 0. 12' W. on a true line between Sections 35 and 36

Over nearly level desert, through joshua, mesquite and low sage.

0.06 Set an iron post 3 ft. long, 2 inches in diameter, 30 inches in the
ground for the witness corner to Sections 1, 2, 35 & 36, with a brass
cap marked

T 9 N R 16 W
S 35 | S 36
S 2 | S 1
W C
1934

Raised a mound of

stone 3 ft. base, 2 ft. high, west of corner.

15.50 Telephone line bears N. 55° E. and S. 55° W.

17.50 Road and pipe line bear S. 50° W. to Neenach and Quail Lake
Pumping Station and N. 50° E. to Antelope Pumping Station and Reasmend.

40.09 Set an iron post 3 ft. long, 1 inch in diameter, 30 inches in
the ground, for the $\frac{1}{4}$ section corner, with brass cap marked,

$\frac{1}{4}$
S 35 | S 36
1934

from which

A joshua 14 inches in diameter bears N. 52° 22' W. 2.21 chains
distant, marked $\frac{1}{4}$ S. 35 B T

A joshua 10 inches in diameter bears S. 24° 36' E. 3.97 chains
distant, marked $\frac{1}{4}$ S 36 B T

XXXXXXXXXXXXXXXXXXXXXXXXXXXX

DEPENDENT RESURVEY OF SUBDIVISION LINES OF
T. 9 N., R. 16 W.

Vol. G., Page 27
William T. Teller
April 1934

From the Corner of Sections 2, 3, 34 & 35 on the South
boundary of the Township hereinbefore described
N. 0° 08' W. on a true line between Sections 34 & 35
Over nearly level desert, through mesquite, sage, johua.

0.04 Set an iron post 3 ft. long, 2 inches in diameter, 30 inches
in the ground for the witness corner to Sections 2, 3, 34 & 35,
with a brass cap marked

T 9 N	R 16 W
S 34	S 35
S 3	S 2
T 8 N	
W 0	
1934	

Raised a mound

of stone 3 ft. base, 2 ft. high, west of corner.

39.86 Set an iron post 3 ft. long, 1 inch in diameter, 30 inches
in the ground for the section corner with brass cap marked

S 34	S 35
1934	

Raised a mound

of stone 3 ft. base, 1-1/2 ft. high, west of corner.

XXXXXXXXXXXXXXXXXXXXX

Vol. G Page 33
William T. Teller
April 1934

From the corner of Sections 3, 4, 33 & 34 on the South boundary
of Township as hereinbefore described
N. 0° 12' W. on a true line between Sections 33 and 34
Over nearly level desert through scattering johua, low mesquite,
sage cacti.

0.04 Set an iron post 3 ft. long, 2 inches in diameter, 30 inches
in the ground, for the witness corner to Sections 3, 4, 33, 34, with
a brass cap marked

T 9 N	R 16 W
S 33	S 34
S 4	S 3
W 0	
1934	

and raised a mound of

stone 3 ft. base, 2 ft. high, west of corner.

DEPENDENT RESURVEY OF SUBDIVISION LINES OF
T. 9 N., R. 16 W.

40.17 Set an iron post 3 ft. long, 1 inch in diameter, 27 inches
in the ground for $\frac{1}{4}$ Section Corner, with brass cap marked

S 33 $\frac{1}{4}$ S 34
1934 from which

A Joshua 12 inches in diameter bears N. 81° 30' E. 139 links
distant, marked $\frac{1}{4}$ S.B.T.

Raised a mound of stone 3 ft. base, 1 $\frac{1}{2}$ ft. high, west of
corner.

XXXXXXXXXXXXXXXXXXXX

Vol. 6
Page 41
William T. Teller
April 1934

From the corner of Sections 4, 5, 32, 33 on South boundary of
the Township, hereinbefore described

N. Co. 40' W. on a true line between Sections 32 and 33
Over barren sand dunes

0.04 Set an iron post 3 ft. long, 2 inches in diameter, 27 inches
in the ground, for the witness corner to Sections 4, 5, 32, 33, with
a brass cap marked

T 9 N R 16 W
S 5 | S 4
S 32 | S 33
W O
T 8 N
1934

Raised a mound of stone

3 ft. base, 2 ft. high, west of corner.

39.84 Set an iron post, 3 ft. long, 1 inch in diameter, 27 inches
in the ground, for $\frac{1}{4}$ Sec. Cor. with brass cap marked

S 32 $\frac{1}{4}$ S 33
1934

stone 3 ft. base, 1 $\frac{1}{2}$ ft. high, west of corner. Raised a mound of

XXXXXXXXXXXXXXXXXXXX

DEPENDENT SURVEY OF SUBDIVISION LINES OF

T. 9 N., R. 16 W.

Vol. G, Page 46
William T. Teller
April 1934

From the corner of Sections 5, 6, 31 and 32 on South boundary
of the township hereinbefore described

N. 0° 54' W. on a true line between Sections 31 and 32
along a poor road, over barren desert, sloping gradually South.

0.02 Set an iron post 3 ft. long, 2 inches in diameter, 27 inches
in the ground, for the witness corner to Sections 5, 6, 31, 32, with
a brass cap marked

T 9 N	R 16 W
S 31	S 32
S 6	S 5
WC	
1934	

No accessories available.

16.80 Road turns to N. 15° W. over desert.

23.00 Poor road bears Northeast and Southwest.

25.00 Road bears N. 10° E. and S. 10° W.

40.08 Set an iron post 3 ft. long, 1 inch in diameter, 27 inches
in the ground, for $\frac{1}{4}$ Section Corner, with brass cap marked

S 31	$\frac{1}{4}$	S 32
1934		

Raised a mound of stone

3 ft. base, 2 ft. high, west of corner.

Flenniken, Bill

From: Bill_Twenhofel@ca blm.gov
Sent: Wednesday, January 26, 2005 1:54 PM
To: Flenniken, Bill
Subject: RE: plats

File in
CSB 975 file
in Warehouse.

T8N
R16W

Mr. Bill Flenniken,

Sorry it has taken so long to respond to your question about the corners of T9N, R16W. The problem was that we did not have active group files containing the documentation regarding surveys for this township. I had to send to the National Archives and try to retrieve the information. I had just about given up when the group file finally showed up on my desk. This file did not contain any information as to why the WC was taken off of the corner caps. While looking through this file I realized that the corners involved were done under another group file which contained the North boundary of T8N, R16W. Once again we did not have this group file in our records, so I sent away to the Archives for this file. After thoroughly reviewing both of these files I found nothing in them that ever directed anyone to remove the WC's from the corner caps. So, I'm sorry to say that we do not have any answer to your question. I have talked to the surveyors in this office who have been here forever thinking that they may have some information regarding this situation, but nobody knows why this was done.

Flenniken, Bill

From: Bill_Twenhofel@ca.blm.gov
Sent: Thursday, November 20, 2003 2:42 PM
To: Flenniken, Bill
Subject: Re: T8/9N R16W

Mr. Flenniken,

I am sorry to inform you that I have not received the group file from the National Archives. I do not know what the problem is. The request was sent to them the first time you contacted me. I have called them concerning this matter twice since my original request. The Archives is a tough place to get ahold of anyone that knows what is going on. Since you reminded me again I will give it another try. Sorry for not being of any assistance.

"Flenniken, Bill"

<BFLENNIK@ladpw.org> To: <btwenhof@ca.blm.gov>
cc:
Subject: T8/9N R16W

11/20/2003 02:19
PM

Mr. Twenhofel:

I was moving some papers on a storage table behind my desk and lo and behold I found a roll of maps and e-mails going back to our last exchange on July 8, 2003.

At that time I had sent a follow up to my May 2003 e-mail inquiring about the package of data you had sent away for. We had hoped that the package would answer the questions as to why the BLM monuments along the referenced Township line that had originally been set as witness monuments to the County Surveyor monuments had been moved to occupy positions only tenths away from the County Engineer monuments.

Had you ever received any information that might be of assistance in formulating our answer to the private surveyor in the Antelope Valley who has asked us the reason for the double monumentation?

Thanks for your help.

Bill Flenniken

LA County Dept of Public Works

Flenniken, Bill

To: btwenhof@ca.blm.gov

Subject: T8/9N R16W

July 8, 2003

Mr. Twenhofel:

In reference to my e-mail of late May regarding the above Township and Range – you had replied that you were sending away for the job package and you anticipated a response in two or three weeks. Have you received the job package? This concerned the BLM monuments that were set as witness corners to the County Engineer monuments in 1934. It now appears that those monuments were removed and newer monuments put in place almost on top of the County Engineer monuments. These new monuments are also dated 1934 but lack the “WC” that the first set of BLM monuments had. We were looking for any documentation that showed the removal and replacement of the original set of BLM monuments set as witness corners.

A private surveyor in the North County is asking why there are double sets of corners and we need to be able to give him a satisfactory answer.

Thanks for your help.

Bill Flenniken, LS
Survey Party Chief II
Los Angeles County Department of Public Works
4th Floor, Survey Division
900 S Fremont Avenue
Alhambra, CA 91803
626-458-5131 (tel)
626-458-5161 (fax)

Flenniken, Bill

To: btwenhof@ca.blm.gov

Subject: T8/9N R16W

Mr. Twenhofel

We are continuing with the research into maps showing the County Surveyor's re-measurement of section lines per your letter of April 21, 2002. We have less than 100 aperture cards left to review. When complete, we will be making a final shipment of 600-700 sheets up to your office. I hope we will have this done by the end of June.

Thank you for your patience in bearing with us for the time it has taken to review and copy these records.

I was hoping that you might help us with a problem. We are investigating a GLO survey of the Township line between Townships 8 North and 9 North in Range 16 West. The County Surveyor surveyed this line which is the boundary between Los Angeles County and Kern County beginning in 1929. They monumented this line with ¼ corners and section corners (brass discs in concrete) in 1932. As per special instructions dated Nov 16, 1933, U.S. Transitman William T. Teller did a dependent resurvey of this same line. He found and accepted the Los Angeles County monumentation. His field notes show that he set witness corners at offsets to the found monuments. These notes are in Book G pages 2-9 "Dependent Resurvey of the South Boundary of Fractional T9N, R16W. There is a Certificate of Approval attached to the notes signed by Frank M. Johnson and dated May 24, 1935. He was with the Office of U.S. Supervisor of Surveys in Denver. According to these notes, Mr. Teller set GLO monuments as witness corners. He notes indicate that the initials WC were stamped on the brass discs. The witness to the ¼ corner S36/S1 was set 1.32' easterly of the accepted ¼ corner. The witness to the section corner 35-36, 2-1 was set 3.96' northerly of the found/accepted County Surveyor monument on a line between sections 35 and 36 of T9N, R16W.

Another witness corner was also set to the ¼ corner of S35/S2. This witness was also 1.32' easterly of the found County Surveyor Monument. This type of witness corners was continued all the way through the Range. They are all dated 1934.

Our records indicate that the County Surveyor reran the line in 1966. They found the County Monuments and some GLO monuments and accepted the GLO monuments as witness corners since the only reference they had was a note on our CSB 975 sheet 1 frame A2 that the GLO had set witness monuments to the County Monuments. However, an examination of the notes and map shows that the GLO monuments found in 1966 did not bear the initials WC. Also, instead of being 1.32' easterly at the ¼ corner S36/S1, the monument is 0.04' east and 0.32' north of the County Monument. At the section corner common to S35, S36, S2, and S1, the monument is 0.28' east and 0.37' north instead of being 3.96' north. And at the ¼ corner of S35/S2, the GLO monument is 0.18' west and 0.34' north rather than 1.32' east of the accepted County monument. All these monuments are also dated 1934.

It seems that after Teller ran his line and filed his notes, that the GLO re-evaluated their acceptance of the County Survey. They must have pulled all their witness corners and reset GLO monuments to represent the actual ¼ section and section corners as the true points rather than the County monuments.. I can find no record of this happening. Is there anything in your files (plat or notes) that would shed light on why this second set of GLO monuments was set in 1934?

As the County Surveyor we are trying to respond to a Land Surveyor in that area who is posing the question to us.

Thank you for any help you can give us in this matter.

Bill Flenniken, LS

SITE SURVEYING

42919 NORTH CHICORY AVENUE
LANCASTER, CALIFORNIA 93534

MAY 13, 2003

MR. PAUL SMITH
COUNTY OF LOS ANGELES
DEPT. OF PUBLIC WORKS
SURVEY DIVISION
P.O. BOX 1460
ALHAMBRA, CA 91802

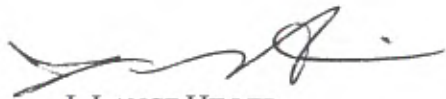
DEAR MR. SMITH:

APPARENTLY I SHOULD NOTIFY YOU BY SEPARATE LETTER OF MONUMENTS THAT NEED RESTORATION. THERE ARE TWO THAT I HAVE RECENTLY COME ACROSS. ONE IS THE ROAD DEPT. MONUMENT AT THE SW END OF CALLE EL BOSQUE AS SHOWN ON MY CORNER RECORD AS BEING 2.3' OUT OF POSITION AND NEEDS TO BE CORRECTED. I BELIEVE IT WAS MOVED DURING GRADING OF THE NEW RESIDENCE SOUTHEASTERLY.

*Pouch sent to
field 3-24-04*

THE SECOND MONUMENT IS ACTUALLY TWO MONUMENTS AT THE NE CORNER OF SECTION 2, T8N, R16W, SBM. OF THE 4 TANGENT TIES SHOWN ON CSFB 2914/140, THE SOUTHERLY TWO ARE LYING HORIZONTAL, DOWN 6-8". THE NW TIE EXISTS. THE NE TIE FALLS IN A 3' HIGH E-W DIRT RIDGE. I DID NOT DIG. THE GLO MONUMENT IS ALSO MISSING. CAN YOU TELL ME WHY THE COUNTY WOULD DECIDE TO REJECT THE GLO MONUMENTS, WHEN THE ORIGINAL CORNERS CANNOT BE CHANGED AND THE DIFFERENCE IS LESS THAN .05'?

SINCERELY,



J. LANCE HILLER
(661) 948-2428