

RESURVEY OF A PORTION OF THE SUBDIVISION LINES OF T. 2 N., R. 13 W.

Vol. 491:21:1-16
John L. Wadsworth
April-May 1955

Previous surveys and resurveys of the boundaries of Sections

13, 14, 15, T. 2 N., R. 13 W. are as follows:-- In 1875 William H. Norway, U.S. Deputy Surveyor, surveyed the South boundaries of Sections 13, 14, 15, the West boundary of Section 15, the East boundary of Section 13, the West 1/2 of the North boundary of Section 15, the South 3/4 mile between Sections 14 and 15, the South 1/2 between Sections 13 and 14, and established the 1/2 Section corner between Sections 11 and 14. In 1896, Lewis H. Cutting, U.S. Deputy Surveyor, resurveyed the East boundary of Section 13. In 1908, Louis Ross, U.S. Deputy Surveyor, made a survey and resurvey extending across the North boundaries of Sections 13, 14, 15, and retraced the East boundary of Section 13. In 1925 William E. Heister, U.S. Surveyor, resurveyed the North boundaries of Sections 13 and 15.

From the true point for the corner of Sections 9, 10, 15 and 16 South on a random line between Sections 15 and 16.

No trace of the 1/2 Section corner; set temporary corner

40.00
81.41

A point 196 links East of the corner of Sections 15, 16, 21 and 22 which is a tack in a stake 2 inches square flush with the Ground (with marker stake marked A 32) which has been set by the County Surveyor of Los Angeles Co. at the intersection of tract lines as determined from monuments found and identified as those shown in the county records.

At the exact point in place of the tack and stake

Set an iron post, 3 ft. long, 2 inches in diameter, 27 inches in the Ground, for corner of Sections 15, 16, 21 and 22 with brass

| | | |
|-------|--------|-----|
| T 2 N | R 13 W | exp |
| 8 16 | 8 15 | |
| 8 21 | 8 22 | |
| 1954 | | |

raise a mound of stone, 3 ft.

base, 3 ft. high, West of corner

Thence N. 10 23' E. on a true line between Sections 15 and 16

Over burned area, ascend Southeast slope 100 ft.

RESURVEY OF A PORTION OF THE SUBDIVISION LINES OF T.2 N., R.13 W.

Spur, slopes southeast; descend slightly over northeast slope 4.90
 Draw, course S. 30° E.; ascend southwest slope 60 ft. 7.40
 Rocky spur, slopes southeast; ascend southeast slope 45 ft. 9.40
 Draw, course Southeast; continue ascending of southeast slope 245 ft. 12.40
 Ridge bears N. 70° E. and S. 70° W.; descend northeast slope 325 ft. 17.85
 Draw, course Northwest; descend northwest slope 20 ft. 25.60
 Rocky spur, slopes Northwest; continue descending northwest slope 28.90
 Trail bears Northeast and Southwest; descend northwest slope 30 ft. 34.10
 Canyon, course S. 70° W.; ascend southwest slope 215 ft. 35.60
 Set an iron post, 3 ft. long, 1 inch in diameter, 27 inches in the ground for Section Corner with brass cap marked 40.72

S 16 | S 15
 4
 1934

raise a mound of stone 3 ft.

base, 3 ft. high, west of corner.

Spur, slopes southeast; ascend southeast slope 35 ft. 40.90

Having, course S. 35° E.; ascend southwest slope 335 ft. 44.30

Spur, slopes S. 20° E.; ascend southeast slope 360 ft. 51.30

Head of draw, course S. 30° E. 63.80

Spur, slopes S. 30° W.; ascend southwest slope 260 ft. 64.50

Truck road, bears Southeast and West. 77.60

Draw, course Southwest; ascend southeast slope 310 ft. 78.30

True point for corner of Sections 9, 10, 15, 16 81.44

Set an iron post 3 ft. long, 2 inches in diameter, 12 inches in the ground to bedrock, in a mound of stone, 4 ft. base, 1 1/2 ft. high, for corner of Sections 9, 10, 15, 16 with brass cap marked

T 2 N R 13 W
 S 9 | S 10
 S 16 | S 15
 4
 1934

from which

The witness corner of Sections 9, 10, 15 and 16 bears N. 89° 06' W. 304 links distant; a granite outcrop, 8 x 6 x 5 ft. above ground, marked as described in the official record.

U.S.G.S. Triangulation Station SISTER ELBIE, bears N. 10° 11' W. 10.52 chains distant; a brass tablet in boulder, approximate elevation

5081 ft., vertical elevation above section corner 320 ft. marked

RESURVEY OF A PORTION OF THE SUBDIVISION LINES OF T. 2 N., R. 13 W.

U.S. GEOLOGICAL SURVEY
 IN COOPERATION WITH
 LOS ANGELES COUNTY



SISTER KISIE
 1931

U.S.T.S. Lookout Station, Mt. Lukens, elevation 4950 ft., bears

N. 76° 18' E. 19.84 chains distant.

Band in Sister Kise trail, from Northwest to Southwest

bears west 250 links distant; another band in same trail, from East

to Northwest bears west 350 links distant.

Land mountainous.

Soil, rocky, 4th rate.

No timber or brush on account of being in burned area.

from a corner of sections 14, 15, 22, 23

West on a random line between sections 15 and 22.

A point 100 links South of the 1/4 section corner.

Thence from corner

West on a random line between sections 15 and 22.

A point 49 links South of the corner of sections 15, 16, 21 and 22.

Thence from the corner

S. 89° 19' E. on a true line between sections 15 and 22.

Through burned area. Ascend southwest slope 20 ft.

An iron pipe 1 inch in diameter, 1 inch above ground, with marker

stake alongside marked A 33. This point is on top of a small

spur, sloping South.

Descend southeast slope 95 ft.

Draw, course S. 50° E.; descend southeast slope 375 ft.

Stake, 2 inches square with tack, marker stake marked A 34. This

point is on a small spur sloping Southeast.

Gulch, course South; ascend southwest slope 660 ft.

Stake, 2 inches square, with tack, marker stake marked A 35.

Old trail, bears Northeast and Southwest.

Stake, 1 x 2 inches, with tack, marked POT

10.95

10.90

10.28

9.80

4.87

2.80

0.52

40.71

40.29

RESURVEY OF A PORTION OF THE SUBDIVISION LINES OF T.2 N., R.13 W.

28.58 An iron pipe, 1 inch in diameter, 1 inch above ground, with marker stake marked A 36. This point is on top of a ridge bearing north and south; descend southeast slope 210 ft.

24.09 A stake, 1 x 2, 6 inches above ground marked A 37.

27.30 Ravine, course S. 10° E.; ascend broken southwest slope 250 ft.

27.48 A stake, 1 x 2 inches, 6 inches above ground, with marker stake marked A 38.

34.83 A stake, 1 x 2 inches, 6 inches above ground, with marker stake marked A 39.

40.71 The 1/4 section corner, which is a granite stone, 12 x 9 x 5 inches, above ground, faintly marked with a north face, in an old mound of stone, 2 1/2 ft. base, 1 ft. high. In place of the old stone, which is set alongside

Get an iron post, 3 ft. long, 1 inch in diameter, 27 inches in the ground for 1/4 section corner with brass cap marked

8 15
8 22
1934

Raise a mound of stone, 4 ft.

base, 3 ft. high, north of corner, 6 ft. distant, S. 88° 34' E., on a true line between sections 15 and 22

Ascend southeast slope 30 ft.

2.60 Trail, bears north and south.

2.90 Spur, slopes south; descend southeast slope 565 ft.

3.30 Trail bears N. 70° E. to Sister State Pk. (Mt. Lukens) and S. 30° W.

16.30 Gulch, course south; ascend west slope 360 ft.

22.30 Spur, slopes S. 30° West; ascend southwest slope 115 ft.

28.10 Spur, slopes south; descend southeast slope 170 ft.

33.90 Descend east slope 105 ft.

35.50 Canyon, course S. 10° W.; ascend east slope 195 ft.

37.90 Trail, bears north and south.

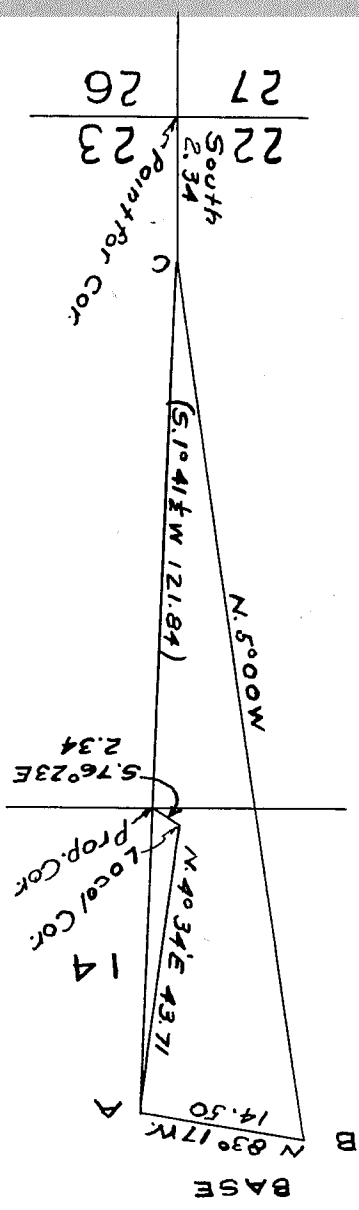
40.30 The point for the corner of sections 14, 15, 22 and 23 which is re-

established by single prop. between the 1/4 section corner of sections

14 and 23 and the 1/4 section corner of sections 15 and 22 and a

record distance (80.00 chains) in latitude from the point for

corners of sections 22, 23, 26 and 27.



15, 22 and 23
 from the loc. corner of sections 14,
 15, 22 and 23
 N. 4° 34' E; 43.71 chains, set
 triang. flag A; thence
 N. 83° 17' W. 14.50 chains, on a
 base line and set flag B,
 from the point for corner of sections
 22, 23, 26, 27 determined from reference points,
 as the corner has been washed out,
 N. 2° 34' chains, and set flag C, from
 which flag A bears N. 1° 41-1/2' E. and
 flag B bears N. 5° 00' W.
 By triangulation from flag A, to
 flag C, I obtain B. 1° 41 1/2' W. 121.84
 chains.
 By traverse from the point for the
 corner of sections 22, 23, 26, 27 to the
 reestablished corner of sec. 14, 15, 22, 23, the

Land mountainous.
 Soil 4th rate
 No timber or undergrowth on account of being in burned area.

1 45.
 Ground, witnessd by a post 4 inches square, 7 ft. high, marked
 2 1/2 link dist.; an iron pipe, 1 inch in diameter, 1 inch above
 The local corner of sec. 14, 15, 22, 23, bears N. 76° 23' W.
 steep ravine, course southeast, bears southeast 1/2 link distance.
 a cross (+) on face of granite outcrop on south edge of small

| | | | |
|-------|-------|-------|-------|
| 1 2 2 | 1 3 2 | 1 4 2 | 1 5 2 |
| 8 22 | 8 23 | 8 15 | 8 14 |
| 1934 | | | |

from which

with brass cap marked
 of a granite outcrop, 8 ft. high, for corner of sections 14, 15, 22, 23,
 set an iron post 3 ft. long, 2 ins. diam., 28 ins. in the crevice
 RESURVEY OF A PORTION OF THE SUBDIVISION LINES OF T. 2 N., R. 13 W.

REMARKS OF A PORTION OF THE SUBDIVISION LINES OF T. 2 N., R. 13 W.

Line between Secs. 22 and 23 is N. 1° 43' E. 80.04 chains. All bearings checked by direct readings of solar, and all angles checked by several repetitions.

from the true point for the corner of sections 10, 11, 14, 15 South on a random line between sections 14 and 15. No trace of the 1/2 Sec. Cor. found; set temporary corner.

40.00 No trace of the 1/2 Sec. Cor. found; set temporary corner. A point 337 links E. of the corner of sections 14, 15, 22 and 23;

Thence N. 2° 27' E. on a true line between sections 14 and 15 Over open, burned-over land; ascend southwest slope 100 ft.

4.00 Spur slopes west; descend northwest slope 60 ft.

9.00 Canyon; course S. 30° W.; ascend northwest slope 125 ft.

10.00 Point of rocky spur, slope southeast; enter gathering fir and live oak timber; descend northwest slope 45 ft.

14.00 Same canyon, course S. 30° E.; ascend broken southwest slope 700 ft. Same slopes S. 70° W.; leave timber; enter burned area.

29.60 Spur slopes S. 70° W.; ascend south slope 100 ft.

31.30 Draw, course S. 70° W.; ascend south slope 100 ft.

33.10 Spur, slopes southeast; ascend southwest slope 120 ft.

35.30 Spur, slopes southeast.

38.40 Draw, course southeast; ascend south slope 45 ft.

39.49 Set an iron post, 3 ft. long, 1 inch in diameter, 18 inches in the ground to solid rock; supported by mound of stone, 2 ft. base, 1 ft. high, for 1/2 section corner, with brass cap marked

1 ft. high, for 1/2 section corner, with brass cap marked. Raised a mound of stone

2 1/2 ft. base, 1 1/2 ft. high, west of corner. Ascend southwest slope 230 ft.

42.70 Truck road, bears N. 60° W. to Mt. Lukens and S. 60° E. to Angeles Great Highway. Trail bears N. 65° W. and S. 65° E.

43.60 Trail on ridge, both bear northwest and southeast; descend general northeast 445 ft.

45.30 Same trail bears northeast and southwest.

46.60 Saddle in center of ridge, bears northeast and southwest; enter

RESURVEY OF A PORTION OF THE SUBDIVISION LINES OF T. 2 N., R. 13 W.

scattering oak timber and dense undergrowth, bears northeast and southwest.

| | |
|-------|--|
| 47.80 | spur, slopes east |
| 56.80 | spur, slopes N. 30° E.; descend north slope 345 ft. |
| 67.30 | Ravine, course N. 35° W.; ascend southwest slope 35 ft. |
| 68.70 | Rocky spur, slopes N. 70° W.; descend northwest slope 95 ft. |
| 71.40 | Ditch, course N. 60° W.; ascend southwest slope 65 ft. |
| 74.30 | Spur, slopes N. 65° W.; descend northwest slope 130 ft. |
| 78.99 | True point for the corner of sections 10, 11, 14 and 15. |

Set an iron post, 3 ft. long, 2 inches in diameter, 30 inches in the ground, for corner of sections 10, 11, 14, 15, with brass cap

marked
T 2 N. R 13 W
S 10 | S 11
S 15 | S 14
1934

Raised a mound of stone,

5 ft. base, 4 ft. high, west of corner.

From this corner, the witness corner of sections 10, 11, 14 and 15 hereinafter described, bears S. 86° 06' E., 8.35 chains distant

land mountainous

Soil, rocky, 4th rate

Timber, scattering fir and oak

From the corner of sections 10, 11, 14 and 15

S. 86° 06' E. on a random line between sections 11 and 14.

The witness corner of sections 10, 11, 14, 15

Thence S. 86° 52' E., on a random line between sections 11 and 14.

A point 10 links south of the witness 1/4 section corner; thence from corner S. 88° 52' E., on a random line between sections 11 and 14.

Record distance for true point for 1/4 section corner, set temporary corner.

A point 12 links south of the witness corner of sections 11, 12, 13, 14.

I return to the corner of sections 10, 11, 14 and 15

Thence S. 86° 06' E. on a true line between sections 11 and 14

RESURVEY OF A PORTION OF THE SUBDIVISION LINES OF T. 2 N., R. 13 W.

Through scattering timber and undergrowth; Ascend northwest slope

145 ft.

Spur, slopes N. 50° W.; descend northeast slope 50 ft.

Draw, course N. 30° W.; Ascend northwest slope 15 ft.

The witness corner of Sections 10, 11, 14, 15, which is a granite stone

6 x 6 x 8 inches above ground, marked and witnessed as described in

Official Records.

Thence S. 89° 05' E. on a true line between Sections 11 and 14.

Descend northeast slope 190 ft.

Draw, course N. 10° E.; descend northeast slope 10 ft.

Spur, slopes North; descend northeast slope 100 ft.

Havine, course N. 30° W.; Ascend northwest slope 215 ft.

A mound of stone, 5 ft. base, 1 1/2 ft. high, bears south 9 links dist.

Ridge bears N. 10° E. and S. 10° W.; descend northeast slope 90 ft.

A mound of stone, 3 ft. base, 1 1/2 ft. high, bears south 14 links dist.

Head of draw, course north.

Spur, slopes northeast; descend northeast slope 80 ft.

The witness corner, which is a granite stone, 14 x 10 x 8

inches, marked W O 1/2 on north face, in old mound of stone 3 ft.

base, 1 ft. high;

Thence S. 89° 02' E. on a true line between Sections 11 and 14

Descend northeast slope 70 ft.

Draw, course northeast; descend northeast slope 285 ft.

Proportionate distance between the witness corner of

Sections 11 and 14 and the witness corner of Sections 11, 12, 13 & 14.

Set an iron post 3 ft. long, 1 inch in diameter, 27 inches

in the ground for 1/2 section corner, with brass cap marked

1111

1934

Raised a mound of stone, 3 ft.

base, 3 ft. high, north of corner.

Descend northeast slope 290 ft.

16.50 Havine, course northeast; Ascend northwest slope 75 ft.

REARVIEW OF A PORTION OF THE SUBDIVISION LINES OF T. 2 N., R. 13 W.

- 19.90 Spur, slopes N. 20° E. with trail bearing N. 20° E. and S. 20° W.;
- Descend northeast slope 65 ft.
- 26.40 Gulch, 20 links wide, course northeast; ascend northeast slope 30 ft.
- 27.20 Spur, slopes northeast; descend northeast slope 10 ft.
- 30.20 Draw, course N. 20° E.; ascend slightly.
- 32.70 Truck road, bears N. 70° E. and S. 70° W.; descend northeast slope 50 ft.
- 37.00 Ravine, course northeast, with small stream of water, 2 links wide. Ascend northeast slope 135 ft.
- 40.29 The witness corner of sections 11, 12, 13 and 14, which is a granite stone 10 x 5 x 9 inches above ground, marked N O on east face, and 2 notches on south face, with remainder chipped off; witnessed by a mound of stone, 2 1/2 ft. base, 1 ft. high, west of corner. Thence S. 85° 48' E. (record course) on true line between sections 11 and 14.
- 0.40 Spur, slopes northeast; descend northeast slope 150 ft.
- 1.10 Pseudom trail, bears N. 60° W. and S. 60° E.
- 4.70 Set an iron post, 3/4 ft. long, 2 inches in diameter, 27 inches in the ground for corner of sections 11, 12, 13 and 14, with brass cap marked

| | |
|-------|--------|
| T 2 N | R 13 W |
| S 11 | S 12 |
| S 14 | S 13 |
| 1934 | |

Raised a mound of stone 3 ft. high, 3 ft. base, west of corner.

From this corner, the true point for corner No. 5 of Home-stand Entry #204, bears S. 5° 58' E., 26.98 chains distant. The corner monument being missing, the true point for corner No. 5 was determined by measuring its record course and distance (N. 75° 07' W., 30 links dist.) from the oak bearing tree, which is 14 inches in diameter, marked as described in the Official Records. The true point for this corner is in roadway.

Since no trace of corner #9 of this Home-stand Entry could be found, it was impossible to make the required intersections.

RESURVEY OF A PORTION OF THE SUBDIVISION LINES OF T. 2 N., R. 13 W.

Land mountainous

Soil rocky, 4th rate

Timber, scattering fir and live oak, undergrowth oak, manzanita, chamisal and lilac.

Thence south on a random line between sections 13 and 14.

40.00 No trace of the 7 Section corner found; Set temporary corner.

80.58 A point 163 links east of the corner of sections 13, 14, 23 and 24

I return to the corner of sections 11, 12, 13 and 14

Thence S. 10° W. on a true line between sections 13 and 14

Through scattering timber and dense undergrowth; descend northeast

slope 5 ft.

0.70 Creek, 3 links wide, course N. 20° E.; ascend northeast slope

140 ft.

4.60 Spur, slopes southwest; descend southwest slope 15 ft.

6.20 Draw, course northwest; ascend northeast slope, 125 ft.

9.60 Spur, slopes N. 70° W.; descend southwest slope 30 ft.

11.70 Draw, course northwest; ascend northeast slope 90 ft.

14.10 Spur, slopes N. 60° W.; descend southwest slope 10 ft.

15.20 Draw, course N. 70° W.; ascend northeast slope 30 ft.

16.40 Spur, slopes N. 80° W.; descend southwest slope 25 ft.

17.30 Trail, bears N. 60° W. and S. 60° E.

21.20 Draw, course northwest; ascend northeast slope 205 ft.

25.30 Truck road, bears N. 80° W. and S. 70° E.

25.90 Truck road, bears N. 80° W. and S. 70° E.

28.00 Ridge bears N. 75° W. and S. 60° E.; Angeles Great Camp, U.S. Civilian Conservation Corps, bears S. 61½° E.

Descend southwest slope 45 ft.

29.60 Draw, course southeast; ascend northeast slope 30 ft.

34.00 Angeles Great Camp, U.S. Civilian Conservation Corps, bears S. 66°

42° E.

34.30 Spur, slopes east; descend southeast slope 30 ft.

34.60 Ravine, course N. 60° E.; ascend northeast slope 106 ft.

40.30 Set an iron post, 3 ft. long, 1 inch in diameter, 28 inches in the

Ground for 7 Section corner, with brass cap marked

Land mountainous
Soil rocky, 4th rate
Timber, scattering fir and live oak
Undergrowth, oak, manzanita and chamise

4 ft. base, 2 1/2 ft. high west of corner.

Raised a mound of stone

| |
|----------------|
| 1934 |
| S 23 S 24 |
| S 14 S 13 |
| T 2 N R 13 W |

cap marked

- 80.60 The corner of sections 13, 14, 23 and 24, which is a granite stone 14 x 10 x 7 inches with faint, but intelligible markings, in an old mound of stone. In place of, and with the old stone alongside, set an iron post, 3 ft. long, 2 inches diameter; 30 inches in the ground for corner of sections 13, 14, 23 and 24, with brass cap marked
- 79.10 Spur, slopes northeast; ascend northwest slope 50 ft.
- 74.90 Draw, course northeast; ascend northwest slope 245 ft.
- 73.00 Descend slightly.
- 71.60 Spur, slopes east; ascend northeast slope 25 ft.
- 70.80 Ravine, course east; ascend northeast slope 30 ft.
- 140 ft.
- 66.70 Ridge, bears N. 70° E. and S. 70° W.; descend southeast slope 140 ft.
- 64.40 Draw, course northeast; ascend northwest slope 130 ft.
- 63.00 Spur, slopes northeast; descend southeast slope 35 ft.
- slope 365 ft.
- 55.10 Creek, 5 links wide, course southeast; ascend rocky northeast slope 295 ft.
- 50.60 Spur, slopes southeast; descend southwest slope 295 ft.
- 48.20 Draw, course southeast; descend southeast slope 55 ft.
- 45.80 Spur, slopes east; descend southeast slope 185 ft.
- S. 78° 21' E.
- 45.60 Angeles Crest Camp, U.S. GILPIN CONSERVATION CORPS, bears

Ascend northeast slope 85 ft.

base, 3 ft. high, west of corner.

Raised a mound of stone, 4 ft.

| |
|-------------|
| 1934 |
| S 14 S 13 |
| † |

RENEWAL OF A PORTION OF THE SUBDIVISION LINES OF T. 2 N., R. 13 W.

RESUME OF A PORTION OF THE SUBDIVISION LINES OF T. 2 N., R. 13 W.

From the corner of sections 14, 15, 22 and 23

East on a random line between sections 14 and 23.

40.24 A point 132 links north of section corner.

Thence from corner

East on a random line between sections 14 and 23

41.03 A point 194 links north of the corner of sections 13, 14, 23 and 24;

Thence from corner N. 87° 18' W. on a true line between sections

14 and 23.

Through scattering timber and dense undergrowth; ascend north

slope 345 ft.

17.00 Truck road and telephone line, bear N. 10° W. and S. 10° E.; leave

dense brush and enter burned area.

17.70 Same truck road bears north and south.

18.40 Ridge, bears northwest and southeast; descend southwest slope 30 ft.

19.40 Draw, course south; ascend southeast slope 40 ft.

21.50 Enter U.S.P.S. Experimental Station for soil erosion tests, 25 links

west, bears north and south.

23.10 Spur, slopes south; descend southwest slope 140 ft.

27.60 Ravine, course south; ascend southeast slope 45 ft.

31.40 Spur, slopes south; descend southwest slope 40 ft.

33.10 Draw, course south; ascend southeast slope 50 ft.

34.40 Descend southwest slope 90 ft.

39.50 Spur, slopes southwest; descend slightly.

41.08 The section corner, which is a granite stone, 17 x 10 x 8 ins.

above ground, marked with a north face, in a small mound of stone. In

place of, and with old stone alongside

Set an iron post 3 ft. long, 1 inch in diameter, 27 inches in

the ground, for section corner, with brass cap marked

$$\begin{array}{r} 8\ 14 \\ \hline 8\ 23 \\ 1934 \end{array}$$

Raised a mound of stone, 3 ft.

base, 3 ft. high, north of corner.