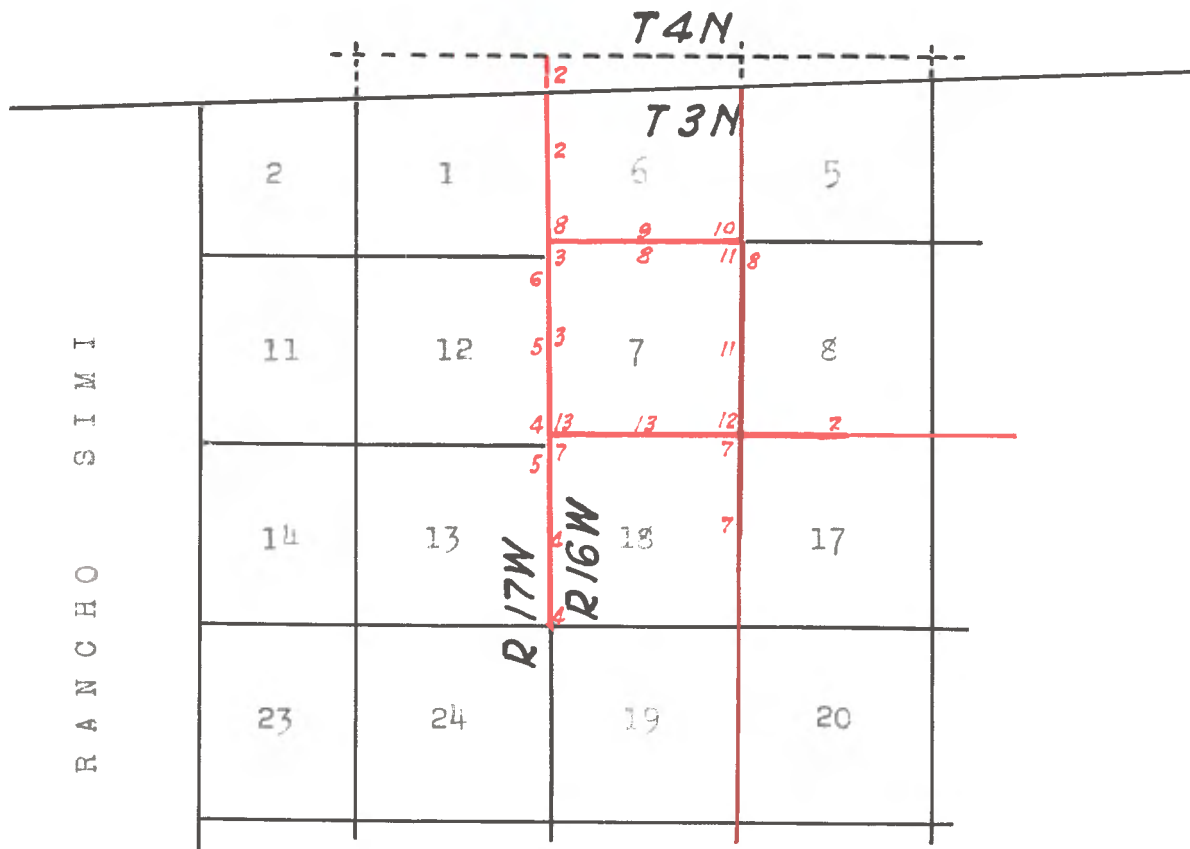


NORTH, EAST, SOUTH, WEST
 BOUNDARY OF SEC. 7, T.3 N., R.16 W.

Vol. 392-9:7-23
 E.T. Wright
 August 1899

Copied from notes on file at the
 United States Cadastral Engineer's
 Office, Glendale, Calif.
 Copied and compared by A.C. Johnson
 and W.H. Blackmer, Sept. 17, 1936

RANCHO SAN FRANCISCO



E. T. Wright 1899

San Francisco, Cal.
November 8, 1900.

The foregoing Field Notes of the surveys of Sec. 7,
T.3 N., R.16 W., San Bernardino Base Meridian in the
State of Calif., executed by Edward T. Wright, U.S.
Deputy Surveyor, under his - - - - - dated Oct. 25, 1899,
having been critically examined, and the necessary cor-
rections and explanations made, the said Field Notes and
the Surveys they described are hereby approved.

J. M. GLEAVES

U. S. Surveyor-General for
California.

SEAL

WEST BOUNDARY T.3 N., R.16 W.

Vol. 392; 9 : 7 - 23
 E. T. Wright
 Aug. 1899

I begin on the established corner of T.3 & 4 N., R.16 & 17 W., San Bernardino E. & M., which is a cottonwood post 6 inch diameter, marked:

T 4 N	R 16 W	S 31	on N.E.
T 3 N	R 16 W	S 6	on S.E.
T 3 N	R 17 W	S 1	on S.W.
T 4 N	R 17 W	S 36	on N.W. faces with an alder

marked post alongside, in large mound of rocks in bottom of Pico Canyon, from which

A cottonwood tree, 26 in. diameter bears S. $61\frac{1}{2}^{\circ}$ E. , 98 links distant;

A live oak tree, 24 in. diameter bears N. 58° W. 138 links distant, on all which trees the old blazes and marks are plainly discernible, as described by the Surveyor General .

From said post I run S. 0° 11' E., as turned from true North and South line as determined August 6, on a random line.

Var. 14° 35' E.

7.97 An old cottonwood post 5 inches diam in mound of earth, with pits E, W, and S and marked

T 3 N	R 16 W	S 6	on East
T 3 N	R 17 W	S 1	on West
S F			on North and
C C			on South faces, for closing corner

to Fract. Secs. 1 and 6 and the San Francisco Rancho.

10.36 A redwood post 4 in. square, marked

S F	on North and
N S 4	on S.W. faces

16.99 A redwood post 4 in. square marked

N S	on W. face
-----	------------

28.71 A redwood post 4 in. square, marked

N S	on W. face
-----	------------

60.13 Intersect North line of Arcadia Oil claim, which point falls on North face of precipitous rock bluff.

60.55 An old rock mound on summit of high rock peaks. This corner

WEST BOUNDARY T.3 N., R.16 W.

is mentioned in field notes of Deputy W.P. Reynolds, Aug. 7, 1899.

74.75

Point 62 links East of old Walnut post, 4 in. diameter,
marked

T 3 N S 7 on South
R 16 W S 6 on North and
C O on East faces, with large

mound of rocks on West side. This is the closing corner as set by
Deputy George H. Perrin in 1896.

89.30

Point for corner to Sections 1, 6, 7 and 12 as per field
notes of Deputy W.P. Reynolds.

89.48

Point for corner to Sections 1, 12, as per field notes of
Deputy George H. Perrin in 1896.

Both of these points are on steep sliding ground.
Search diligently for old corners but can find nothing.

Continue S. 0° 11' E. on my random line

Var. 14° 35' E.

100.02

Intersect South line of Arcadia Oil Claim at redwood post
4 in. square, marked

A on North
S 7 R 16 on East
T 3 N on South and
S 12 on West faces

112.25

Redwood post 4 in. square, marked

R on West face

Aug. 8, 1899

128.54

Old shale mound which I accept as the $\frac{1}{4}$ Section Corner called
for by Deputy W.P. Reynolds, ; his distance calls 129.30 chains
between Sections 7 and 12.

The old marked sandstone has disappeared.

I reset a sandstone 14 x 12 x 8 in., marked

$\frac{1}{4}$ and 12 on W. face

in center of old mound, to perpetuate same, and remound mound. Can
find no trace of this $\frac{1}{4}$ Corner as set by Dep. George H. Perrin in 1896.

129.26

Redwood post 4 in. square marked

S M 2 on West and
R on East faces

WEST BOUNDARY T. 3 N., R. 16 W.

- 130.07 Redwood post, 4 in. square, marked
R on East face
- 134.00 Redwood post, 4 in. square, marked
R 4
- 155.43 Distance for closing corner to Sections 7 and 15 as per field notes of Dep. George H. Perrin; search diligently for corner but can find no sign of it.
- 169.30 Point for Corner to Sections 7, 12, 13 and 15, as per field notes of Deputy W.P. Reynolds, falls in deep, rocky gulch; search carefully for old corner here and at 40 chains S. 0° 11' E. from old shale mound the $\frac{1}{4}$ Corner on East side of Section 12, above mentioned, but without finding any signs of Corner.
- Continue S. 0° 11' E. on my random line.
Var. 14° 35' E.
- 209.30 Point for $\frac{1}{4}$ Section Corner between Sections 13 and 15, as per field notes of Deputy W.P. Reynolds; search diligently But can find no sign of a corner.
- 237.23 Summit of high ridge, course S. 80° E.
- 243.90 Corner to Sections 13 and 24, as per field notes of Deputy George H. Perrin, bears E. 1.53 chains distant.
Rock marked, also bearing tree
A White Oak 6 in. diam. bears S. 8° 30' E. 37 links distant., marked as called for in Perrin's field notes.

Aug. 10, 1899, June 9, 1900.

As my random line is proved to be the true line by the old corner of Deputy W.P. Reynolds' survey, and all the 4 x 4 posts on line set by McClure, Deputy Surveyor, in survey of various claims, between the top corner and the $\frac{1}{4}$ Section Corner in East boundary of Sec. 12, T.3 N., R. 17 W., and finding no corners between said $\frac{1}{4}$ Corner on East side Section 12 and Southeast Corner of Section 13, I proceed to establish the closing corner between Secs. 7 and 15 at

WEST BOUNDARY T. 3 N., R. 16 W.

24.95 S. 0° 56' E. in a straight line between these two corners and being proportional distance as follows:

By Perrin distance is 120 chains, I find it to be 115.36 chains.

He set closing corner for Southwest Corner Section 7, 25.95 chains. I set closing corner at 24.95 chains South of old $\frac{1}{4}$ Section Corner in East Boundary of Section 12.

Set granite monument 30 in. long, 4 in. square at top, 24 ins. in the ground, on steep North slope of spur, bearing N. 45° E. 2.80 links distant, North of summit, for closing corner to sections 7 and 12, marked 12 on S 4 and 00 on E. faces, with 4 notches on S. and 2 notches on N. faces; dug pits 24 x 18 x 12 ins. crosswise on each line North and South, 3 ft., and East of stone 7 ft. dist., and raised a mound of earth 4 ft. base 2 ft. high East of Corner.

Thence N. 0° 56' W. on true West boundary of Section 7,
T. 3 N., R. 16 W. Var. 14° 35' E.

1.05 Bottom of ravine, course East
3.00 Top of rock bluff, 30 ft. high, bearing East and West.
4.00 Top of ridge, bears N. 70° E.; descend
15.50 Ravine, course East; ascend broken North slope through thick brush.
19.49 Redwood post 4 ins. square.
23.42 Redwood post 4 ins. square.
24.23 Redwood post 4 ins. square.
24.95 Old $\frac{1}{4}$ Sec. Cor. in East boundary Section 12 as aforesaid.

June 11, 1900.

Thence continue along West side Section 7 N. 0° 11' W.
13.05 Head of Northwest branch of Towley Canyon, course S. 80° E.
Ascend broken Northeast slope through heavy brush.
14.42 Set granite monument 30 ins. long, 4 ins. square, at top, 24 ins. in the ground, for $\frac{1}{4}$ Section Corner in West boundary of Section 7, T. 3 N., R. 16 W., at the proportional distance between closing corners to Section 7, marked $\frac{1}{4}$ on West and 7 on East faces.

WEST BOUNDARY T. 3 N., R. 16 W.

Raised a mound of stone 2 ft. base, $1\frac{1}{2}$ ft. high, 5 ft. square S.W. of monument, pits impracticable.

16.29 Redwood post 4 ins. square on summit of long ridge bearing East to Wilson Mt.

21.54 Bottom of canon Co. N.E.

26.64 Summit of ridge, bearing Northeast

28.52 Intersect South line Arcadia Oil Claim, a redwood post 4 ins. square, marked as aforesaid, and which I mark I.C. on East face, from which the Southwest Corner of said oil claim bears N.89° 59' W., 4.60 chains distant.

32.04 Bottom of branch of Little Moore Canon, course Northeast.

37.34 Summit of ridge bearing Northeast

39.44 Point for corners to Sections 1 and 12, T.3 N., R.17 W., as proportioned between old corner found on rock peak and old $\frac{1}{4}$ Cor. in East boundary Section 12, falls on sliding ground where it is impossible to set a permanent corner. Therefore at

42.44 Set granite monument, 30 ins. long, 4 ins. square at top, 24 ins. in bed rock and a mound of stones and earth for a witness to Sections 1, 12, T.3 N., R. 17 W., marked

1 on N.W.
12 on S.W. faces and
W.C. with 5 notches on the S. and
1 notch on N. edges;

Raised a mound of stone, 2 ft. base, $1\frac{1}{2}$ ft. high, 3 ft. West of Corner. Pits impracticable.

Aug. 11, 1899.

46.54 Into Big Moore Canon, course Northeast

49.54 Bottom of Big Moore Canon, course N.30° E., about 3 chains above junction.

53.79 Aforesaid point 62 links East of closing corner set by Deputy George H. Perrin for the Northwest corner of Section 7, T.3 N., R.16 W. See notes of North Boundary of said Section 7.

August 12, 1899.

WEST BOUNDARY T. 3 N., R. 16 W.

From the C.C. to Secs. 7 and 18 as re-established by me
I run East on a random line between sections 7 and 18.

Var. 14° 35' E.

Over rough brushy country

39.10 Distance called in field notes of Deputy George H. Perrin;
search diligently in the vicinity but can find no sign of corner.

77.54 Point from which an old mound of stones or summit of main
ridge, bearing Southeast from Wilson Mt. bears N. 4.86 chains distant.
Search diligently but can find no other signs of a corner.

August 14, 1899.

Thence to prove said corner, from this mound of stones, I
run S 0° 01' E., as per field notes of Deputy George H. Perrin
between Sections 17 and 18

Var. 14° 35' E.

Over rough broken country.

40.00 Distance called for in field notes of Deputy George H. Perrin;
search diligently in the vicinity but can find no sign of corner
called for.

Return to said mound of stones at Southeast corner of Section
7 and run N. 89° 40', as per field notes of Deputy George H. Perrin.

Var. 14° 35' E.

40.66 Distance called for; search diligently, but can find no sign
of his corner.

Aug. 15, 1899

Before accepting this mound of the Southeast corner of Sec. 7
I run N. 0° 01' W. from it on a random, as per field notes of
Dep. George H. Perrin, between Sections 7 and 8.

Var. 14° 35' E.

36.57 Point 4 links west of Witness Corner described in field notes
of Deputy George H. Perrin, an old oak post 3 ins. square with a
mound of earth alongside, pits on line, marked

$\frac{1}{4}$ S.W.C. on West face, from which

A white oak tree 30 ins. diameter, marked W.C. $\frac{1}{4}$ S.E.T.
bears N. 89° E. 55 links distant.

NORTH BDY., SEC. 7, T. 3 N., R. 16 W.

79.98 Point 10 links East of the Corner called for in field notes of Deputy George H. Perrin

A walnut post 4 ins. square set on southwest slope of spur, marked

T 3 N S 6 on N.W.
R 16 W S 5 on N.E.
S 8 on S.E. and
S 7 on S.W. faces, with large mound of rocks on West side and from which

A live oak tree 24 ins. diameter, marked

T 3 N R 16 W S 7 B T

bears S. 82° 20' W., 297 links distant.

Aug. 16, 1899

From the corner just described, I run West on a random line, as per field notes of Deputy George H. Perrin, between Sections 6 and 7.

Var. 14° 35' E.

40.00 Distance given in field notes of Deputy George H. Perrin; search diligently in this vicinity, but can find no sign of a corner.

78.61 Point, from which the C.C. of Deputy George H. Perrin already described in my field notes of the Range Line bears S. 6.14 links distant.

Aug. 17, 1899

Whence I run N. 85° 32' E. on a true line for North boundary Section 7. T. 3 N., R. 16 W.

Var. 14° 35' E.

Over rough broken country.

0.62 Intersect the established Range Line at 14.20 chains S. 0° 11' E. from old corner on Rock Peak, and here

Set a granite monument, 30 ins. long, 4 ins. square at top, 24 ins. in the ground, for the true closing corner at northwest corner Section 7, marked

6 on N.,
7 on S. and
C.C. on E. faces, with
5 notches on S. and
1 notch on N. faces; dug pits 24 x 18 x 12

ins. crosswise on each line N. & S., 3 ft. East, and East of stone 7 ft. distant; Raised a mound of earth 4 ft. base, 2 ft. high, East of corner.

NORTH BDY., SEC. 7, T. 3 N., R. 16 W.

Thence from this corner as the true closing corner between Sections 6 and 7, T. 3 N., R. 16 W., I run

N. 85° 32' E. on true North boundary of Section 7

Var. 14° 35' E.

Descend.

- 3.90 Bottom of Big Moore Canyon, course Northeast .
- 25.20 Summit of dividing ridge between Big Moore and Little Moore canons, bearing Northeast; descend along southerly slope of branch spur.
- 35.14 Intersect line between Camulos and Arcadia Oil Claims, from this point the Northeast corner of Arcadia Oil Claims, which is also the Northwest Corner of the Camulos Oil Claims bears N. 0° 29' 12.10 chains distant, and a redwood post 4 ins. square on ridge (no dir.) of spur bearing southeast, marked
- A on W.
C on E. faces, which I marked
W.C.I.C. on South face, for a witness to the intersection, bears N. 0° 29' W. 265 links distant; this intersection point falls on steep, bluffy South slope of spur, bearing Southeast.
- 38.51 Proportional distance, point for $\frac{1}{4}$ Section Corner between Sections 6 & 7 falls on steep, rocky bluff on South slope of spur, bearing Southeast.
- 39.69 Set granite monument 30 ins. long, 4 ins. square at top, 24 ins. in rotten sandstone and mound of stones and earth, on ridge of narrow spur bearing Southeast for witness corner to the $\frac{1}{4}$ Sec. Cor. between Sections 6 and 7, marked,
- $\frac{1}{4}$ and 6 on North
7 on South and
W C on East faces; raised a mound of stone 2 ft. base, 1 $\frac{1}{2}$ ft. high, 5 ft. southeast of corner.
- 46.04 Intersect line between Alameda and Camulos Oil Claims and set a sandstone boulder 30 x 12 x 10 ins., 24 ins. in the ground on small bench, marked;

NORTH BDY., SEC, 7, T. 3 N., R. 16 W.

7 and 1 C on South
6 on North
C on West and
A on East faces; raised a mound of stone

2 ft. base, $1\frac{1}{2}$ ft. high, 4 ft. south of corner; from this corner the northwest corner of Alameda Oil Claim bears N. 0° 11' W. 6.74 chains distant.

- 47.82 Road bearing Northeast and Southwest, in wash of Little Moore Canon, course East and North
- 61.22 Cross canon, course northwest; ascend over point of small spur,
- 66.92 Summit of spur, bearing North; descend
- 74.82 Ravine, course North, over point of spur bearing North
- 77.30 Ravine 8 links wide, 3 ft. deep, course northwest; ascend
- 78.22 Old corner to Sections 5, 6, 7 and 8 as previously described and which I replace with a granite monument 30 ins. long, 4 ins. square at top, 24 ins. in the ground, with old post on Northeast side, marked

5 on Northeast
8 on Southeast
7 on Southwest and
6 on Northwest faces, with 5 notches on South

and 5 notches on East edges, from which the Northeast corner of Alameda Oil Claim bears N. 61° 45' E. . 9.17 chains distant.

August 18, 1899.

EAST BDY., SEC. 7, T. 3 N., R. 16 W.

Thence I run S. 0° 12' E. on true line between Secs. 7 and 8.
Var. 14° 35' E.

8.00 Ridge of main spur, bearing Northeast from Wilson Mt. along
Northeast slope.

14.00 Branch spur, bears East; descend along Southeast slope

30.48 Canon, course N. Northeast; ascend

35.76 Intersect line between Alameda & Encino Oil Claims.

Set a sandstone rock 24 x 9 x 4 ins. in the ground on steep
South slope, marked

A on North
E and I C on South
8 on East and
7 on West faces ; raised a mound of rock

2 ft. base, 1½ ft. high, 3 ft. southwest of corner, from which
the Southeast corner of Alameda Oil Claim, which is also the
Northeast corner of Encino Oil Claim, bears S. 89° 57' E. 8.31
chains distant, and the corner between the Encino and Camulos Oil
Claims bears N. 89° 57' W. 6.76 chains distant.

42.41 Point for ¼ section Corner falls in ravine, course N. NW.

43.41 Old witness, as described in my random;

Set granite monument 30 ins. long, 4 ins. square at top,
24 ins. in the ground, and reset old post on North side of stone,
marked

¼ and 7 on West
8 on East
W.C on South faces ; redug pits, and rebuilt

mound ; enter Oak Flat

Thence S. 0° 03' W. on true East boundary Section 7 .

Var. 14° 35' E.

3.57 Ridge bearing Northeast; leave oak flat on Northeast slope
of Wilson Mt.; descend along East side Wilson Mt.

21.95 Intersect line between Temple and Encino Oil Claims,

Set sandstone 36 x 14 x 6 ins. on bed rock, bounded by a
mound of stone covered with earth and marked

E and I C on North
8 on East
T on South
7 on West faces, from which Northwest corner of

SOUTH BDY., SEC, 7, T. 3 N. R. 16 W.

Temple Oil Claim bears N. 89° 50' W. 13.49 chains distant and Southeast corner of Encino Oil Claim bears S. 89° 50' E. 8.48 chains distant.

29.60 Small ravine, course East; ascend.

35.60 Summit of main spur, bearing South from Wilson Mt.

36.57 Said old mound of rocks, although the marked stone called for cannot be found, I accept this as original corner set by Dep. George H. Perrin, because of stated evidence found to the North, also further proof of this being the old corner is, a line connecting it with the re-established closing corner between Sections 7 and 18 will practically be parallel to true North boundary of Section 7. At this point I set granite monument 30 ins. long, 4 ins. square at top, 24 ins. in ground, on ridge to perpetuate said corners to Sections 7, 8, 17 and 18, marked

8 on Northeast
17 on Southeast
18 on Southwest and
7 on Northwest faces, with 4 notches on South and 5 notches on East edges; raised a mound of stone 2 ft. base, 1½ ft. high, 5 ft. west of corner.

August 19, 1899.

Thence S. 86° 25' W. on a true line between Sections 7 and 18

Var. 14° 35' E.

Descend steep West slope of spur.

11.02 Steep ravine, course southwest; ascend

13.52 Intersect West line of Temple Oil Claim, set sandstone 14 x 12 x 6 ins. 10 ins. in the ground and bedrock on steep Southeast slope of spur bearing S. 20° W., marked

7 on North
T on East
18 on South and
I.C. on West faces, and raised a mound of stone 2 ft. base, 1½ ft. high, 3 ft. north of corner, from which the Northwest Corner of Temple Oil Claim bears N. 15.45 chains distant, and Southwest corner of said claim bears S. 14.58 chains distant, which distance helps to prove the South boundary of Section 7 being but 14 links less than that found by Dep. George H. Perrin.

SOUTH BDY., SEC. 7, T. 3 N., R. 16 W.

- 19.00 Ridge of high rock spur bearing S. 20° W.; descend .
- 22.52 Bottom of canon, course South; ascend
- 28.02 Ridge on low steep spur, bearing South, descend
- 31.02 Bottom of canon, course southeast; ascend
- 36.52 Trail on ridge of long low spur, bearing S. SE.
- 39.28 Point at proportionate distance for $\frac{1}{4}$ Section Corner;
Set granite monument 30 ins. long, 4 ins. square at top,
24 ins. in the ground, at head of short branch spur, bearing South
to re-establish $\frac{1}{4}$ Sec. Cor. between 7 and 18, marked
 $\frac{1}{4}$ and 7 on North and
18 on South faces; raised a mound of
shale rock 2 ft. base, 1 $\frac{1}{2}$ ft. high, 3 ft. North of monument;
descend
- 45.00 Center of large slide
- 50.00 Bottom of west fork of Towsley Canon, course Northwest;
ascend.
- 56.00 Top of Rock Bluff, ascend gradually along North slope.
- 64.00 Top of spur bearing North, descend.
- 70.52 Ravine, course N. 45° E., ascend.
- 72.00 Ravine bearing N. 45° E., ascend gradually along steep N.
slope of mountain.
- 77.69 The re-established closing corner to Sections 7 and 18
as described in the field notes of Range Line.

August 21, 1899.

The great discrepancies existing in many instances between the field notes furnished me from the Surveyor General's Office and the lines, corners, and topography as found on the ground, was the cause of the loss of much time in an attempt to reconcile all conditions, and in the search for the old corners, leading to the conclusion that some of the lines had never been run over on the ground.

SOUTH BDY., SEC. 7, T. 3 N., R. 16 W.

Also, the re-tracing of certain boundaries of the Oil Claims, for the purpose of finding the intersections with them consumed much time, as the country is badly broken and very brushy.