

FIELD NOTES OF  
 SURVEY OF SEC. 1, T.3 N., R.17 W., S.B.E. & M.

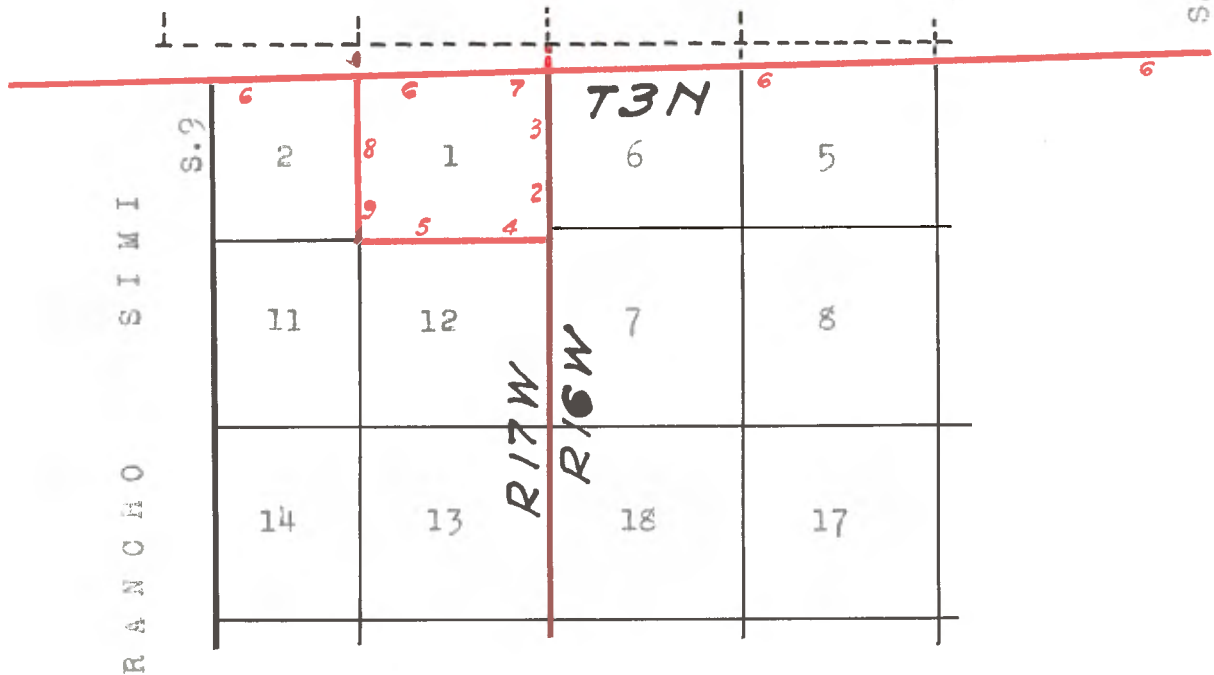
Vol. 392:10-Pages 8 to 19  
 E.T. Wright  
 Aug. 1899

Copies from notes on file at the  
 United States Cadastral Engineer's  
 Office, Glendale, Calif.  
 Copied and compared by A.C. Johnson  
 and W.H. Blackmer, Oct. 30, 1936.

RANCHO SAN FRANCISCO

T4N

S.F. 3



U.S. Surveyor General's Office

San Francisco, Cal.  
Nov. 8, 1900

The foregoing Field Notes of the Surveys of Sec. 1, T.3 N., R.17 W., S.B.B. & M., in State of California, executed by Edward T. Wright, U.S. Dep. Surv., under his special instructions dated Oct. 25, 1899, having been critically examined, and the necessary corrections and explanations made, the said Field Notes and the Surveys they described are hereby approved.

J.M. Gleaves

(SEAL)

U.S. Surveyor-General for Cal.

FIELD NOTES OF  
SURVEY OF SEC. 1, T.3 N., R.17 W., S.B.B. & M.

Vol. 392:10-Pages 8 to 19  
E.T. Wright  
Aug. 1899.

I begin at the point for corner to Sections 1, 12, T.3 N., R.17 W., as described by me in the survey of Sec. 1, T.3 N., R.17 W.

From said point I run

N.  $0^{\circ}$  11' W. on true East boundary, Sec. 1, T.3 N., R.17 W.

Var.  $14^{\circ} 35'$  E.

3.00 Granite Monument, set by me as witness to said Southeast Cor. 30 ins. long, 4 ins. square, 24 ins. in bed rock and mound of stone and earth, marked

I on N.W.  
12 on S.W. faces and  
W 0 with 5 notches on S. and  
1 notch on N. edges

Raised a mound of stones 2 ft. base,  $1\frac{1}{2}$  ft. high, 3 ft. west of corner, pits impracticable.

- 7.10 Into Big Moose Cyn., Course Northeast
- 10.10 Bottom Big Moore Cyn., Course N.  $30^{\circ}$  E. about 3 chains above junction.
- 14.35 Point, described in my field notes of Range Line in Survey of Sec. 7, T.3 N., R.16 W. Granite monument set by me for Northwest Corner Sec. 7.
- 16.10 Ravine, Course East, ascend over broken East branch of Big Moore Cyn.
- 26.10 Summit of bluff of mountain.
- 28.55 Rock mound, mentioned in my field notes of Range Line in Survey of Sec. 7, T.3 N., R.16 W., on summit of rock peak, which I make witness to intersection of North line of Arcadia Oil Claim.
- 28.97 Intersection of North line Oil Claim, from which Northwest corner of said claim bears  $8.89^{\circ}$  57' W. 4.52 chains distant.
- 29.60 Base of high rock bluff, North foot of rock peak.
- 38.70 Small ravine, Course N.  $30^{\circ}$  E.
- 39.60 Point at proportional distance between corner on Rock Peak and old Township Corner mentioned by me in field notes of Range Line in survey of Sec. 7, T.3 N., R.16 W., at which I set a granite monument 30 ins. long, 4 ins. square at top, 24 ins. in the ground, to re-establish  $\frac{1}{4}$  Sec. Cor. in East Boundary of Sec. 1, T.3 N., R.17 W., marked  $\frac{1}{4}$  & S 1 on W.

Field Notes of  
Survey of Sec.1, T.3 N., R.17 W., S.E.B. & M.

faces, from which

Most westerly prong of a nine prong black walnut tree 5 ins. diameter bears S. 15° 10' W. 76 chains distant, and

Small ravine, course Northerly, bears E. 1 chain distant along East slope of ridge.

- 47.10 East slope of ridge at head of West fork of Big Moore Cyn., Course E.
- 57.81 Point for Southeast Corner of N. Star Oil Claim falls on sliding ground.
- 60.39 Redwood post 4 ins. square, mentioned in my field notes on Range Line in survey of Sec.7, T.3 N., R.16 W., on summit of ridge at head of spur bearing W. and N.W.
- 71.10 Summit of ridge, bearing N.E.
- 72.11 Redwood post 4 ins. square, mentioned in my field notes on Range Line in survey of Sec. 7, T.3 N., R.16 W.
- 78.74 Redwood post 4 ins. square, mentioned in my field notes on Range Line in survey of Sec.7, T.3 N., R.16 W.
- Descend along E. side of summit of ridge.
- 81.13 Old cottonwood post mentioned in my field notes of Range Line in survey of Sec.7, T.3 N., R.16 W., 5 ins. in diameter in mound of earth, with pits E.W. & S., marked  
T.3 N., R.16 W. S 6 on E.  
T.3 N., R.17 W. S 1 on W.  
S F on N. and  
C C on S. faces, for closing corner to fractional Sec.1 & 6 and San Francisco Rancho at top of steep ascent.
- As there seems to be some doubt as to where the true intersection of this Range Line and South Line of Rancho San Francisco is, I locate present stakes as above described and find intersection point later.
- 86.61 Foot of steep slope, enter Pico Cyn., Course East.
- 87.72 Center of dry wash, Course East.
- 88.78 Three iron pipe lines bearing East and West.
- 89.10 Old corner of Townships 3 & 4 N., R.16 and 17 W. mentioned in my field notes on range line in survey of Sec.7, T.3 N., R.16 W.

August 22, 1897

From the true point for section corner between Sec.1 and 12

Field Notes of  
Survey of Sec. 1, T. 3 N., R. 17 W., S. B. B. & M.

at 3.00 chains  $S. 0^{\circ} 11' E.$  of the witness, described by me in my field notes of Range Line in survey of Sec. 7, T. 3 N., R. 16 W., I run W. on random line, as per field notes of Dep. W. P. Reynolds, between Secs. 1 and 12.

Var.  $14^{\circ} 35' E.$

40.00 Distance as per field notes of Dep. W. P. Reynolds, search diligently in this vicinity but find no sign of a corner.

79.29 Point from which

An old post in mound of sandstone and marked

S 1 T. 3 N. R. 17 W. on N. E.  
S 12 on S. E.  
S 11 on S. W. and  
S 2 on N. W. faces

bears N. 5.13 chains distant; Set a granite Mon. 30 ins. long, 4 ins. square at top, 24 ins. in ground, in place occupied by old post, resetting post on Northeast side of stone to better perpetuate this corner. The stone is marked

1 on N. E.  
12 on S. E.  
11 on S. W. and  
2 on N. W. faces; with 5 notches on S. and  
1 notch on E. edge, from which:

A cottonwood tree 6 ins. diameter, growing in S. bank of wash in Pico Cyn., and marked T. 3 N., R. 17 W. S 11 B T bears  $S. 47^{\circ} 43' W.$   $90\frac{1}{2}$  links distant.

Northerly prong of scrub oak tree, 4 ins. diameter, marked T. 3 N., R. 17 W. S 12 B T bears  $S. 27^{\circ} 18' E.$  , 37 links distant.

No other trees within limits.

August 23, 1899.

Thence  $S. 86^{\circ} 18' E.$  on true line between Sections 1 & 12.

Ascend.

Var.  $14^{\circ} 35' E.$

25.50 Summit of ridge, Course South.

Thence along broken S. slope N. of Pico Cyn..

31.00 Graded trail, bearing S. E. and N. W.; thence across head of small canyon, Course South.

31.75 Summit of ridge bearing S.

Field Notes of  
Survey of Sec. 1, T. 3 N., R. 17 W., S. B. B. & M.

- 32.00 Graded trail, bearing N.E. & S.W.
- 39.19 Set granite monument 30 ins. long, 4 ins. square at top, 24 ins. in ground, on steep South slope for a witness corner to  $\frac{1}{4}$  Sec. Cor. between Secs. 1 and 12, marked  
 $\frac{1}{4}$  and 1 on N.  
12 on S. and  
W C on E. faces, and raised a mound of stone 2 ft. base,  $1\frac{1}{2}$  ft. high, 4 ft. North of corner. Pits impracticable.
- 39.725 Point at proportional distance from re-establishment of  $\frac{1}{4}$  Sec. Cor., falls in deep, steep arroyo, Course South along South slope and ascend.
- 42.60 Graded Trail, bears N.W. & S.E.
- 42.60 Summit of ridge bears N.W. & S.E.
- 47.99 Intersect East boundary of Central Oil Claim, set a sandstone 32 x 14 x 6 ins., 24 ins. in the ground, marked  
1 and 1 C on N.  
12 on S.  
B on E. and  
C on W. faces, Raised a mound of stone, 2 ft. base,  $1\frac{1}{2}$  ft. high, 3 ft. South of corner from which the Southeast corner of Central Oil Claim bears S. 0° 05' W., 2.33 chains dist.
- 65.00 Point in saddle of long spur, bearing Northeast.
- 74.00 Bottom of East fork Big Moore Gyn., Course Northeast.
- 74.84 Intersect West boundary of Arcadia Oil Claim, at point from which the Southwest corner of said claim bears S. 0° 07' W., 11.31 chs. dist.  
A redwood post 4 ins. square bears S. 0° 07' W. 5.82 chs. dist., which I mark W.C.I.C., on North face for a witness to said intersection point, which falls on steep sliding ground where it is impossible to establish a permanent corner.
- 79.45 Southeast corner of Section/<sup>1</sup>previously described.

Aug. 24, 1899.

Field Notes of  
Survey of Sec.1, T.3 N., R.17 W., S.E.B. & M.

From the corner to Sections 1, 2, 11 and 12 previously described I run North on a random line, as per field notes of Deputy W.P. Reynolds, between Sections 1 and 2, T.3 N., R.17 W.

Var. 14° 35' E.

40.00 Dist., as per field notes of Dep. W.P. Reynolds. Search diligently in this vicinity, but can find no sign of a corner.

71.64 Point 4 links East of old mound of stone and earth, marked stake on ground having rotted off, from this old mound,

A black walnut 24 ins. diameter, bears N. 70 $\frac{1}{4}$ ° E. , 82 lks. dist.

A black walnut 7 ins. diameter, bears S. 32° E. 1.16 chs. dist.

A black walnut 10 ins. diameter, bears S. 22 $\frac{1}{2}$ ° W. 60 lks. dist.

A willow 10 ins. diameter, bears N. 47-3/4° W. 86 lks. dist. , not 96 lks., as per said field notes.

The old marks on bearing trees are plainly discernible, though partly grown over .

Aug. 25, 1899.

-----  
The South line of the San Francisco Rancho, not being established to my satisfaction on the ground,

I go to the white oak tree S F 3, San Francisco Rancho, and run S. 88° 09' W. on what is supposed to be the true line toward Sta. 2 <sup>said</sup> of Rancho.

222.24 Intersect Range line between Ranges 16 & 17 W. at old cottonwood post, as described 7.97 chains S. 0° 11' E. of Township Corner.

301.36 Corner set by Deputy W.P. Reynolds as the closing corner at Northwest corner of Fractional Sec. 1 bears South 1.85 chains distant.

364.29 Station No. 9 of the Rancho Simi bears S. 3.40 chains distant .

At this station is a white oak tree marked S 9 and is called for in patent, and said to be on line of Rancho San Francisco. I correct my North line of Section 1 to agree with the true line between Sta. 9 of Rancho Simi.

Aug. 26, 1899.

Field Notes of  
Survey of Sec.1, T.3 N., R.17 W., S.E.B. & M.

I return to Range line and establish corner to Sections 1 & 6 on true South line of Rancho San Francisco at 10.05 chains S.0° 11' E. from Township corner and being S.0° 11' E. 2.08 chains (calculated) from old C C described in my notes of West boundary of T.3 N., R.16 W.

Set sandstone 8 x 10 x 16 ins. on North slope of hill, marked

S F on N.  
1 on W.  
C C on S. and  
6 on E. faces, dug pits and built mound

2 ft. at base, 1½ ft. high.

Thence from said closing corner I run

S. 87° 37' W. on South line Rancho San Francisco.

Var. 14° 35' E.

- 3.50 Summit small ridge, bearing North.  
11.00 Cross steep spur.  
21.00 Foot of bank on East side of Pico Cyn.  
26.00 Foot of bank on West side of Pico Cyn.  
43.76 Point on line on summit of dividing ridge 2.48 chains South of granite monument set in ridge .  
66.00 Cross low flat ridge bearing North.  
76.50 Top of ridge bearing Northwest.  
79.13 Intersect West line Section 1, T.3 N., R.17 W., at 96 lks. South of closing corner, as described by Dep. W.P. Reynolds.

Set granite monument 30 ins. long, 4 ins. square at top, 24 ins. in the ground, on West slope of hill, for closing corner to fractional sections 1 and 2, marked

S F on N.  
S 1 on E.  
C C on S. and  
S 2 on W. faces, from which

A black walnut 18 ins. diameter, marked

T.3 N., R.17 W., S.1, C.C., B.T. bears

N. 11° 30' E. 1.95 chains dist.



Field Notes of  
Survey of Sec. 1, T. 3 N., R. 17 W., S. B. E. & M.

A willow tree 14 ins. diameter, marked

T. 3 N., R. 17 W. S. 2 C. C. B. T. bears  
N. 16° W., 2.24 chs. distant.

-----  
Whence I run

S. 0° 02' E. on a true line between Sections 1 and 2.

Var. 14° 35' E.

Ascend steep North slope.

11.19 Summit of ridge bearing E. & W.

17.91 Intersection line between North Star & Menlo Oil Claims.

Set rock 18 x 9 x 7 ins., 12 ins. in rotten sandstone, on  
steep South slope of mountain, marked

N S on N.

1 on E.

M & 1 C on S. and

2 on W. faces,

Raised a mound of stone

2 ft. base, 1½ ft. high, alongside, from which Northeast corner of  
said Menlo Claim bears N. 89° 59' E. 4.99 chains distant.

20.19 Enter creek in Pico Cyn., Course Northeast.

20.70 Center of bridge across creek, wagon road bears N.E. and S.W.

21.93 Leave creek in Pico Cyn.

24.93 Cross creek, Course N. by E.

32.59 Point at proportional distance for ¼ Sec. Cor.; Set granite monument  
30 ins. long, 4 ins. square at top, 24 ins. in the ground, on steep  
East slope to re-establish the ¼ Sec. Cor., marked

¼ and 2 on W.

1 on E. faces; raised a mound of stone

2 ft. base, 1½ ft. high, 4 ft. Southwest of corner. This corner is  
on small steep ridge, bearing East by North 1.50 chs. North of  
rock point and 1.50 chs. West of ravine in bottom of canyon, Course N.  
Ascend.

Field Notes of  
Survey of Sec. 1, T. 3 N., R. 17 W., S. B. B. & M.

- 36.28 Graded road in side of mountain bearing N.N.W. & S.S.E.  
37.28 Peak in ridge, bearing W. of N. and across head of small ravine.  
56.58 Ridge of spur, bearing W.; demand.  
61.28 Ridge, top of steep slope .

Thence into and down small ravine, course West by South.

- 63.46 Intersect line between Menlo and Central Oil claims,  
Set sandstone 18 x 8 x 6 ins., 12 ins. in ground, 15 lbs.  
East of small <sup>steep</sup> arroyo, marked

M on N.

1 and I C on E.

C on S. and

2 on W. faces; raised a mound of stones

2 ft. base, 1½ ft. high, 3 ft. East of Corner, from which Southwest corner of said Menlo Claim bears N. 89° 50' W. 12.66 chs. distant.

- 68.69 Junction of ravines, from N.E. & N.; thence course West of South.  
70.68 Corner to sections 1, 2, 11, 12 previously described.

June 12, 1900.

-----

The great discrepancies existing in many instances between the field notes furnished me from the Surveyor General's Office, and the lines, corners, and topography as found on the ground was the cause of the loss of much time in the attempt to reconcile all conditions, and in the search for the old corners, leading to the conclusion that some of the lines had never been run on the ground.

Also, the retracing of certain boundaries of the Oil Claims for the purpose of finding the intersection with them consumed much time as the country is badly broken and very brushy.