

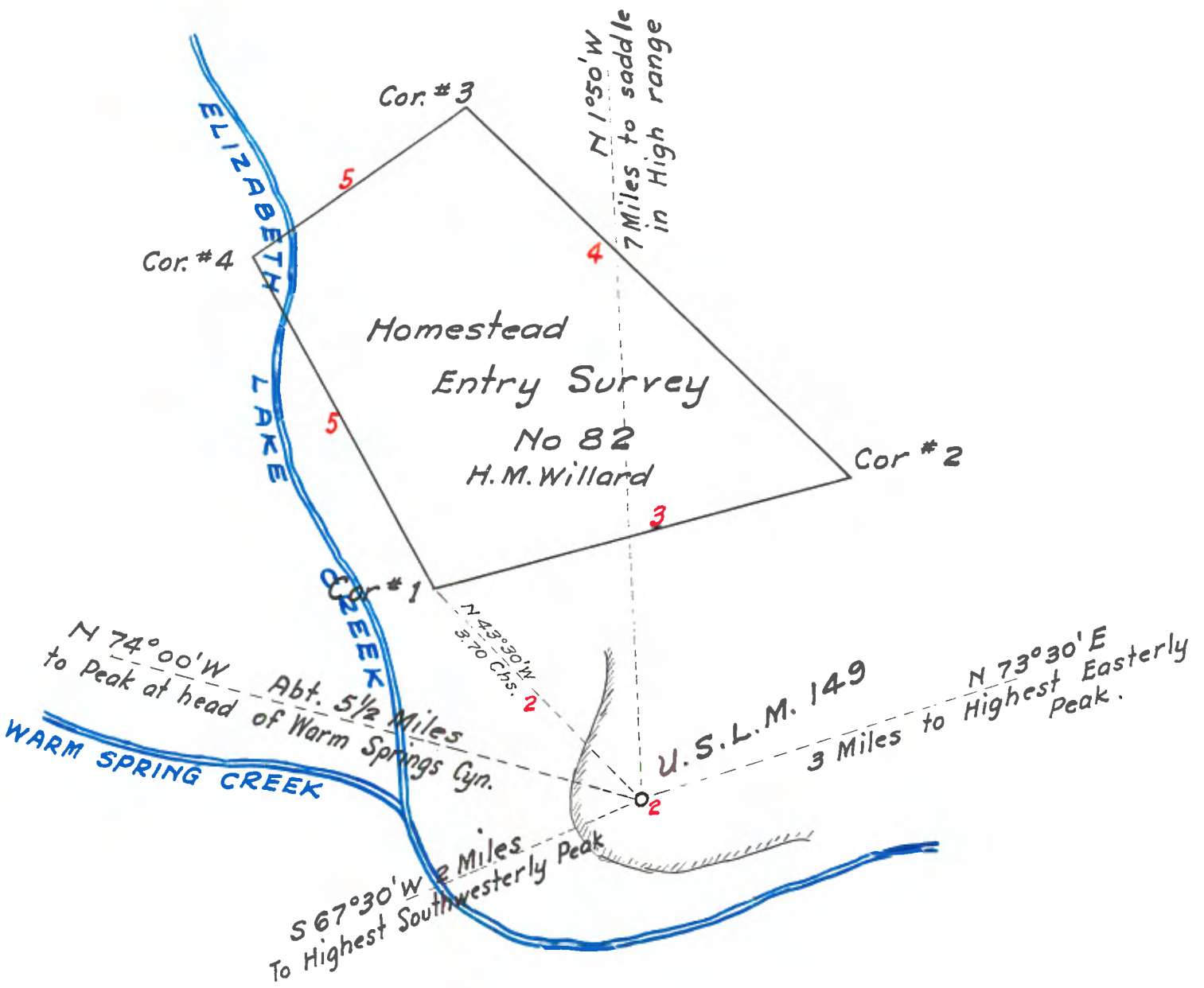
FIELD NOTES
OF
HOMESTEAD ENTRY NO. 82

SANTA BARBARA NATIONAL FOREST

APPROX. SEC.15, T. 6N., R.16W.

Vol. 457:33 pages 1-7
Surveyed by Percy L. Day
Approved Sept. 1, 1914

Copied from notes on file at the
United States Cadastral Engineer's
Office, Glendale. Copied by A.C.
Johnson and compared by A. C. Johnson
and W. F. Kragness November 28, 1938



APPROVAL

U.S. Surveyor General
San Francisco, Cal., Sept. 1, 1914

The foregoing field notes of Homestead Entry #82 situated in the Santa Barbara National Forest in approximate Section 15, unsurveyed T. 6 N., R.16 W., S.B.B. & M., California, executed by Percy L. Day, National Forest Examiner, Forest Service under his special instructions, dated March 24, 1914 having been critically examined and the necessary corrections made, the said field notes and the surveys they describe are hereby approved.

(Signed) Frank H. Gould
U.S. Surveyor-General
for California

FIELD NOTES OF HOMESTEAD ENTRY #82
SANTA BARBARA NATIONAL FOREST, CALIFORNIA

Vol. 457: 33 pages 1-7
Surveyed by Percy L. Day
Approved: September 1, 1914

Survey commenced April 23, 1914, At Corner #1 of this survey in approximate unsurveyed Section 15, T. 6 N., R. 16 W. S.B.M. in latitude $34^{\circ}36'$ N., Longitude $118^{\circ}33'30''$ W, I set off $12^{\circ}28'$ N on the declination arc and at 11h 58m 24s A.M. l.m.t. observe the sun on the meridian. The resulting latitude is $34^{\circ}36'$ N

At 2h 05m P.M. l.m.t., I set off $34^{\circ}36'$ on the latitude arc and $12^{\circ}29'$ N on the declination arc and determine a meridian with the solar, marking a point in the line thereof by a nail driven in a stake firmly set 4.00 chains North of my station.

At 6h 45m P.M. l.m.t. I observe Polaris in accordance with instructions and mark the line thus determined by a nail driven in a stake also set 4.00 chains North of my station.

Time of observation	April 23, 1914	6h 45m P.M. l.m.t.
U.C. of Polaris	April 23, 1914	<u>11h 23.5m A.M. l.m.t.</u>
Hour Angle of Polaris by observation		7h 24m
Azimuth of Polaris at observation		$1^{\circ}20'$

April 23, 1914

- - - - -

April 24, 1914 at 6h 50m A.M. l.m.t., I lay off the azimuth of Polaris $1^{\circ}20'$ to the east, and mark the true meridian by a nail driven in the same stake set for the solar observation of yesterday.

At 7h 00m A.M. l.m.t., I set off $34^{\circ}36'$ on the latitude arc and $12^{\circ}44'$ N on the declination arc; and determine a meridian with the solar, marking a point in the line thereof by a nail driven in the stake used for previous observations.

As the solar apparatus by A.M. and P.M. observation determine positions for meridians within one minute of arc - East and West of the true Meridian determined by Polaris, I conclude that the instrument is in adjustment. The magnetic bearing of the true meridian at 7h 0m A.M. April 24, 1914 is N $16^{\circ}04'$ West; the angle thus determined gives the magnetic declination N $16^{\circ}04'$ E.

- - - - -

As no corner of this entry survey is within 2 miles of a public land corner, preliminary to the survey of this Entry Claim, I proceed to establish U.S. Location monument #149 in accordance with my special instructions as follows:

Set a granite stone $30 \times 20 \times 10$ inches, 15 inches in the ground marked with a cross (x) on top and U.S.L.M. 149 on the N face, and raised a mound of stone 6 ft. base, 4 ft. high, South $3\frac{1}{2}$ ft. dist. from the monument, from which:

A live oak, 30 inches diameter, bears N $32^{\circ}45'$ E
425 links dist. marked U.S.L.M. 149 B.T.

A live oak, 14 inches diameter, bears N $80^{\circ}15'$ East
714 links dist. marked U.S.L.M. 149 B.T.

A live oak, 24 inches diameter, bears S $60^{\circ}30'$ W 890
links dist. marked U.S.L.M. 149 B.T.

A live oak, 30 inches diameter, bears N $60^{\circ}15'$ W 732
links dist. marked U.S.L.M. 149 B.T.

The highest visible northeasterly peak bears N $73^{\circ}30'$ E
about 3 miles dist.

The highest visible easterly peak of Red Mountain bears

S 48° 20' E about 3½ miles.

The highest visible southwesterly peak bears S 67°30' W about 2 miles distant.

The highest visible peak, at the head of Warm Springs Canyon bears N 74° 00' W about 5½ miles distant.

The lowest point of a saddle in the high range to the north bears N 1° 50' W about 7 miles distant.

This U.S.L.M. is located on the highest point of a conical hill on the East side of Elizabeth Lake Canyon at the juncture of Warm Springs Canyon in the southeast quarter of approximate Sec. 15, T. 6 N., R. 16 W., S.B.M. in latitude of 34°36' North, longitude 118°33'30" W.

Commencing at list Corner #5 which is a cottonwood stake 2 inches diameter, 1 foot above ground, marked and witnessed as described by the Forest Service, I destroy all trace of this old listing corner and in its place set a granite stone 20x6x6 inches, 14 inches in the ground for Corner No.1 of this survey, marked LHESS2 on the northeast face and raised a mound of stone 3 ft. base, 1½ ft. high, North 45° East, 3½ ft. distant from corner from which a

Live oak 3 inches diameter bears N 15° E 68 chains distant marked LHESS2 B.T.

U.S.L.M. 149 previously described bears S 43°30' East 370 ~~links~~ distant, by direct bearing.

Then I run

N 70°35' E, descend along North slope of brushy hill.

2.00 Leave brush, enter field, bears N 45° West and North 70° E.

6.99 Intersecting list corner No.4 which is a cottonwood stake, 4 inches square 1 foot above ground, marked and witnessed as described by Forest Service. At this point I leave line 3-4 of list No. 5-475 in order to include desirable agriculture land, and continue on the previous course.

9.40 Set a granite stone 24x10x6 inches, 14 inches in the ground for Corner No.2 of this survey, marked 2HESS2 on the West face and raise a mound of stone 2 ft. base, 1½ ft. high, West 3½ ft. distant from the corner, from which

A live oak, 36 inches diameter bears S 80°50' West 200 links distant marked 2HESS2 B.T.

List Cor. No.4 previously described bears S 70°38' West 2.48 chains, which I destroy.

Then I run

N 45°50' W over rolling land, thru dense chaparral.

Cross old ditch 6 links wide course East.

8.85

10.60

Set a granite stone 24x12x5 inches, 14 inches in the ground for Cor. #3 of this survey marked 3HESS2 on the south face and raised a mound of stone, 2 ft. base, 1½ ft. high, South 3½ ft. distant from the corner, from which

A forked live oak 40 inches diameter bears South 2°15' East 300 links distant marked 3HESS2 B.T.

A forked oak 36" diameter bears South 49°10' West 255 links distant marked 3HESS2 B.T.

Destroy list corners #2 and #3

The northwest corner of entryman's house bears South 26°15' East 320 links distant.

At this corner I set off 12°47' North on the declination arc and at 11h 58m 13s A.M. l.m.t., observe the sun on the meridian. The resulting latitude is 34°36'

Then I run

South 55°20' West, descend steep west slope

1.00 Cross old placer ditch, 6 links wide Course S 60° East

2.60 Descend to old creek bed bears North and South

4.65 Cross Elizabeth Lake Creek 25 links, wide, Course South

5.07 Set a granite stone 22x10x8 inches, 14 inches in the ground for Cor. #4 of this survey, marked 4HES82 on the East face, and raised a mound of stone, 2 ft. base 1½ ft. high, East 3½ ft. distant from corner, from which;

A cottonwood, 12 inches diameter bears N 13°30'E 50 links distant marked 4HES82 B.T.

A live oak 10 inches diameter bears S 59°20' West 20 links distant marked 4HES82 B.T.

Then I run

South 20°47' East descend

0.50 Cross Elizabeth Lake Creek 25 links wide course South

2.50 Wire fence bears N 21° West and S 21° East enters field

2.51 Intersecting List Cor. #1 which is a cottonwood stake, 4 inches square, 1 ft. above ground, marked and witnessed as described by the Forest Service. At this point I enter List No. 5-475, and after destroying the old listing corner proceed on the same course.

6.80 Leave field and ascend steep North slope

8.10 To Corner #1, the point of beginning.

April 24, 1914.

AREA OF HOMESTEAD ENTRY SURVEY #82

Area of List 5-475	3.86 Ac.
Area of additional tract	2.58 Ac.
Total Area of H.E.S.No.82	<u>6.44 Ac.</u>

GENERAL DESCRIPTION

The land embraced in this entry claim occupies a small bench and part of the creek bottom on the east side of Elizabeth Lake Canyon, elevation 2250 ft. The general slope is to the southeast and varies from 1° to 5°.

The soil varies from fine sandy silt along the creek bottom to coarse reddish loam on the upper bench and adjacent hillside.

The cover is chaparral with a few scattering live oaks and some alders along the creek, neither having any commercial value.

There are no mines or indications of minerals on this claim, or in the vicinity and the land embraced therein is strictly non-mineral. The nearest settlement and postoffice is Surrey, California, about 15 miles to the south and is reached by a trail to the juncture of Castac Canyon, thence by wagon road.
