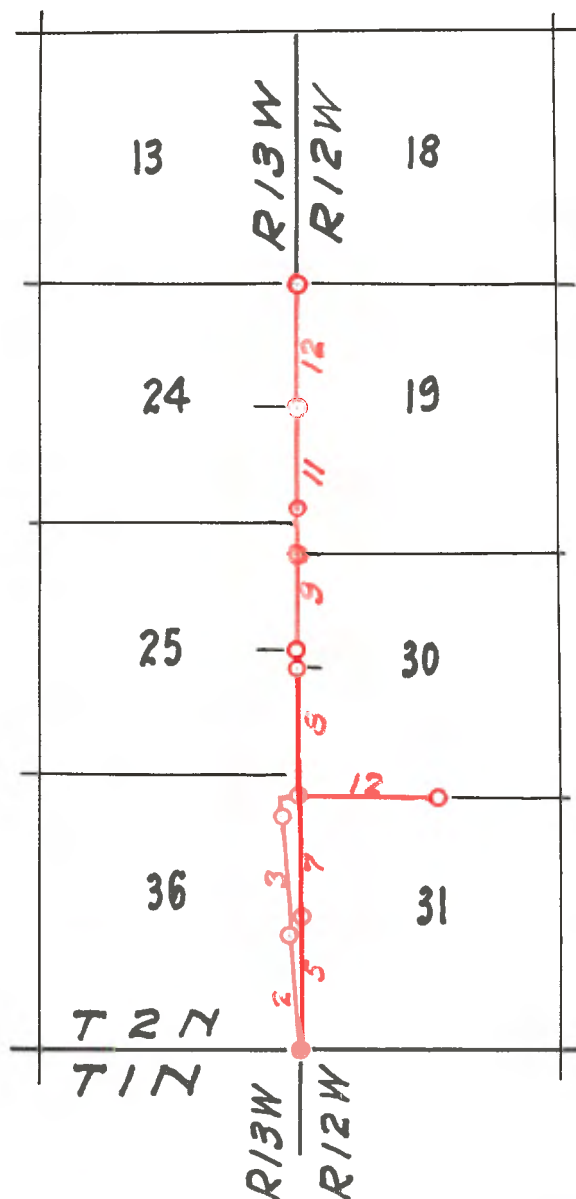


FIELD NOTES OF
 RESURVEY OF THE (CUTTING)
 WEST BOUNDARY OF SEC. 31, T. 2 N., R. 12 W.
 OF THE
 (NORWAY) EAST BOUNDARY OF SECTIONS
 24, 25 and 36 T. 2 N., R. 13 W.
 AND THE
 WEST HALF OF THE NORTH BOUNDARY
 SEC. 31, T. 2 N., R. 12 W.

Vol. 495:2-1 to 7

Copied from notes
 on file in the
 U.S. Cadastral
 Engineer's Office
 Glendale, by
 A. C. Johnson and
 checked by A. C. Johnson
 and Wm. F. Kragness
 Mar. 11, 1940



FIELD NOTES OF
RESURVEY OF THE (CUTTING)
WEST BOUNDARY OF SEC. 31, T. 2 N., R. 12 W.
OF THE
(NORWAY) EAST BOUNDARY OF SECS. 24, 25, & 36
T. 2 N., R. 13 W.
AND THE
WEST HALF OF THE NORTH
BOUNDARY SEC. 31, T. 2 N., R. 12 W.

Vol. 495; 2-1 to 7
Copied from notes on file in the
U.S. Cadastral Engineer's Office
Glendale, Calif., by A. C. Johnson
and checked by A. C. Johnson and Wm. F.
Kragness, March 11, 1940

Resurvey of South three miles of Range Line bet.

T. 2 N., R. 12 & 13 W. (Cutting)

Vol. 495-2 Pg. 1
John L. Warboys
Aug. 11, 1937

The corner of Township 1 & 2 N., R. 12 & 13 W., S.B.M.,
is a cast iron monument filled with concrete 16 inches above
ground, 4 inches square at top, 3 ft. long, flanged at bottom
to 12 inches sq., leaning and improperly oriented. Reset at
same place, 20 inches in the ground. The marks are cast in the
iron and read T. 2 N., S 31 SQFR 22 on N.E., Range 12 W. S6 on
southeast, T. 1 N., S 1 or SW and R 13 W S 36 on N W faces.
This corner is set at the south edge of roadway which is eiled
to the west and improved to the East and was set by Lewis H.
Cutting D.S. in 1896.

Thence North 0°04' East on a random and true line
along the Cutting West Boundary of Sec. 31.

RESURVEY OF THE WEST BOUNDARY OF SEC. 31 (CUTTING)
T. 2 N., R. 12 W.

Over slightly rolling general South slope

- 0.16 Center of Township road bears East (unimproved) and West (oiled)
- 0.40 L.A. County Forestry Dept. telephone line, 6 wires, bears East and West pole #304-6 bears East 3 links distant.
- Enter vineyard bears East and West
- 6.50 Leave vineyard bears East and West, enter low brush, 10 ft. above Township corner
- 7.50 Small Ravine, course E 10 ft. below last point, Ascend Southeast slope thru burned over land.
- 11.80 Trail bears N. 60° W. and S. 60° E. 30 ft. above ravine
- 13.95 Small ravine, Course S. 60° East, 5 ft. above trail
- 17.33 Small drain, Course S 40° East. About 1 chain to small ravine, Course East, 45 ft. above ravine at 13.95 chains
- 17.80 Old road, now used as trail, bears North 70° East and South 70° W., 15 ft. above drain.
- 18.40 Iron pipe, 1 inch diameter, flush with surface
- 21.90 Enter small ravine, Course from North to South 10° E., 85 ft. above road
- 26.40 Leave ravine, course from N. 20° E. to S., 95 ft., above last point, continue ascent of southeast slope
- 31.69 Iron pipe, 1 in. diameter, flush with ground, on low ridge bears N. 70° W. and S. 70° E., 190 ft. above last point
Descend northeast slope 40 ft.
- 33.70 Ravine near head, Course S. 70° East. Ascend south slope 120 ft.
- 38.26 Iron pipe, 1 inch diameter, flush with surface, on spur sloping South 60° East. Descend northeast slope 5 ft.
- 39.39 The quarter Sec. cor. for Sections 31 and 36, which is a granite Stone 16 x 9 x 4 inches, marked SGFR on E. and 1/4 on W. face in a

RESURVEY OF THE WEST BOUNDARY OF SEC. 31 (Cutting) T. 2 N., R. 12 W.

mound of stone 3 ft. base, 1 ft. high. This corner was set by
 Dep. Lewis H. Cutting in 1896, and now refers to Sec. 31 only, of
 R. 12 W. Alongside is a concrete post 6 inches diameter, flush with
 surface, with brass tablet marked

County Surveyors
 T. 2 N.
 36 | 31
 R. 13 W. | R. 12 W.
 1/4 Sec.
 Monument

Thence North 0° 27' East on a random and true line along West bound-
 ary of 31 Along general East slope

- 1.00 Drain course Southeast, Ascend Southeast slope 45 ft.
- 3.51 Iron pipe, 1 in. diameter, flush with surface, on spur sloping
 N. 80° E.
- 3.60 Leave burned area bears North 80° East and South 60° W.
 Descend Northeast slope 80 ft. thru dense live oak brush
- 6.90 Road bears N. 80° East to main road and South 80° West to top
 of hill,
 Continue descent 35 ft.
- 8.50 Drain, Course West, Ascend gentle southwest slope 15 ft.
- 11.50 Old road, bears North 50° West and S. 50° East Continue ascent 35 ft.
- 16.00 Curve at west edge of present road, bears North 30° East and South
 10° East
 Descend northwest slope 20 ft.
- 18.00 Ravine Course South 30° West Ascend southeast slope 40 ft.
- 21.50 Spur, slopes East Ascend Northeast slope 20 ft.
- 25.00 Same ravine, Course S. 30° East, Ascend southwest slope 65 ft.
- 27.40 Leave dense brush, bears East and West
- 27.60 Woven wire fence bears East and West. Enter Gould substation
 of Sou. Cal. Edison Co. High Tension power line switches. Descend 5 ft
- 36.70 Woven wire fence bears northwest and southeast. Leave substation,
 land,
- 36.90 U.S.F.S. oiled road bears northwest through Gould substation to
 Angeles Crest Highway, and southeast to Arroyo Seco Blvd. Ascend
 southwest slope 30 feet.

39.50 Low ridge bears East and West Descend North 30° West slope
20 feet.

40.46 Corner monument 6 inches diameter 4 inches above ground with
brass tablet 2½ inches diameter marked

COUNTY SURVEYORS
WITNESS
COR

5.00 So.
MONUMENT

40.53 The corner of Secs. 25, 30, 31, 36, which is a granite stone
18x12 inches, 18 inches above ground, marked with 5 grooves
on North, 1 groove on South, 6 grooves and S G F R on East
faces. This corner originally set by Dep. Lewis H. Cutting
in 1896 now becomes the northwest corner of Section 31 only
of R. 12 W.

Land, rolling, mountainous

Soil, rock gravel, and granite sand, 2nd and 3rd rate

Timber none; undergrowth, scrub live oak, chamisal, sumac,
laurel, yucca and poison oak.

RESURVEY OF A PORTION OF THE EAST BOUNDARY OF T. 2 N., R. 13 W.
(Norway 1875)

From the corner of Township 1 and 2 N., R. 12 and 13 W.,
hereinbefore described North 1°04' East on a random and true
line along East boundary of Sec. 36.

Ascend gentle general South slope 30 feet to ravine at
13.90 chains

0.16 Center of township road bears East (unimproved) and West
(Oiled)

0.40 L.A. Co. For. Dept. telephone line, 6 wires, bears East and West,
Pole #304-6 bears East 2½ links dist.

Enter vineyard bears East and West

- 6.50 Leave vineyard, bears East and West, enter low brush
- 7.50 Small ravine, Co. E., enter burned area
- 11.70 Trail, bears North 60° W and S. 60° E
- 13.90 Small ravine, Course S 70° East at jet from North 70° West and North. Ascend broken general South slope 35 feet
- 16.00 Leave ravine, Course S., from North 30° East Ascend 50 feet
- 18.00 Old road, now used as trail, bears North 70° E. and S. 70° W. Ascend 70 ft.
- 22.00 Enter same ravine, Course S 20° E. from North Ascend 155 ft.
- 28.10 Leave ravine, Course S., from North 60° East. Ascend 150 ft.
- 32.00 Low ridge, bears North 70° West and South 70° W. Descend northeast slope 50 feet.
- 34.00 Ravine, near head, Course S 70° East. Ascend S.E. slope 105 ft.
- 37.50 Small spur, slopes S. 70° East, Ascend along general East slope, 10 ft.
- 40.10 Head of small draw, Course South 70° East, Ascend S.E. slope 40 ft.
- 43.14 The Norway 1/4 Cor. which is a granite stone 14 x 5 x 7 inches marked 1/4 on one face, lying along side of an old scattered mound of stone, on top of spur, sloping North 80° East.

In center of old mound, with original 1/4 section corner alongside,

Set an iron post 3 ft. long, 1 inch diameter, 27 inches in the ground for 1/4 section corner of Sec. 36 only, of R. 13 W., with brass cap marked

1/4 S 36 raised a mound of

1887

Thence

North 1° 26' East on a random and true line along East boundary of Section 36

Descend North slope 75 feet, thru fence oak brush

- 2.40 Road bears North 70° East to main road, and South 70° West to top of Hill. Descend 15 feet

- 3.70 Drain, Course West, level to truck road.

- 6.50 Same road bears North 40° West to main road and South 40° East to top of hill.
- 9.90 U.S.F.S. truck trail, bears North 30° West to main road and South 30° East
Ascend southwest slope 60 feet thru dense chamisal
- 12.30 Low spur, slopes West Descend Northwest slope 10 feet
- 13.80 Same truck trail, bears North 30° East to main road and S 30° W
Descend 5 feet
- 14.60 Foot trail, bears East 40 links to truck trail and West
Descend 10 feet
- 17.00 Ravine, Course South 30° West, Ascend South slope 15 feet
- 17.90 Point of spur, slopes East, Descend 5 ft.
- 18.40 Same Ravine, Course S. 30° E. Ascend S.W. slope 50 feet
- 21.00 Same truck trail, bears North 30° West to main road, and
South 30° East Ascend 15 ft.
- 22.10 Spur, slopes West, Over rolling land, descend 5 ft.
- 23.10 Leave dense brush bears East and West - Level
- 23.70 Road bears North 10° West to Main road and South 40° East at Junction
with same truck trail, bears South 30° West level
- 23.85 Fence East and West at S. edge of Gould substation, Southern
California Edison high tension line switches. Descend 5 ft.
- 25.46 Fence at North side of yard (residence) bears North 70° East and
South 70° West
- 25.60 Same truck trail bears North 70° East to main road and South 70°
West for 30 links; thence South 10° E. level.
- 27.01 High tension transmission line on steel towers of the Southern
California Edison Co. bears North 71½° West and South 71½° East
Tower West M-22 T 3 bears North 71½° West 36 links distant.
Ascend 5 feet
- 29.46 High tension transmission on steel towers bears North 71½° West
and South 71½° East. Tower EAST M22 T3 bears South 71½° 36 links
distant. Descend North slope 40 feet.

- 31.80 Ravine, near head, Course South 70° East. Ascend S. slope 20 ft.
- 32.60 U.S.F.S. oiled road, bears North 50° West thru Gould substation to Angeles Crest Highway and South 50° East to Arroyo Seco Blvd. Enter chamisal, ascend south slope 75 ft.
- 35.61 Low ridge bears East and West, High tension line steel tower
WESR NO T1 bears East 18 chains distant Descend North slope 13 feet
- 36.63 Telephone line - 14 wires, of Southern California Edison Co., bears North 85° East and South 85° West
Descend 55 feet.
- 38.70 The Norway Corner of Sections 25, 30, 31 and 36 which now becomes the corner of Sections 25 and 36 only, of R. 13 W. and which is a granite stone 15 x 8 x 5 inches, marked on all four faces, but the only legible marks are 2 N on NE 31 on S E and 25 on NW faces in an old partly scattered mound of stone. In the center of the old mound, with the original stone alongside

Iron
Set an / Post 3 ft. long, 2 inches diameter, 27 inches in the ground for the corner of Sections 25 and 36 only of R. 13 W., with B.C. marked

T 2 N

R 13 W	R 12 W
2 25	
2 36	

1937

raise a mound of stone

3 ft. base, 2 ft. high, West of Cor 3 ft. distant.

Land - rolling, mountainous

Soil - rock, gravel and granite sand, 2nd and 3rd rate,

Timber none, undergrowth, scrub live oak, chamisal, sumac,

lilacs, yucca, and poison oak

North 0° 51' East on a random and true line along East boundary of Sec. 25, over rough mountainous land thru dense brush. Descend North slope 30 feet.

- 0.70 Small ravine, Course North 40° East Continue descent 90 feet
- 3.80 Deep ravine, Course South 70° East Ascend steep slope 75 feet
- 5.60 Point of spur, slopes South 70° East along East slope level
- 7.10 Small ravine, Course S. 30° East, Ascend steep southwest slope 60 feet.
- 8.00 Spur slopes South 40° East, Descend Northeast slope 80 feet
- 12.10 Small ravine Course S. 70° East Ascend S. slope 30 feet
- 12.90 Point of spur, slopes South 70° East Descend Northeast slope 20 feet
- 14.10 Ravine Course S. 60° East Ascend South slope 40 feet

- 14.90 Small spur, slopes South 70° East, Descend Northeast slope 20 ft.
- 17.70 Main ravine, Course South 40° East, Ascend steep S.W. slope
180 feet
- 20.20 Small Drain, Course S 30° West, Continue ascent 60 feet
- 22.40 Top of cut on S side of Highway, Descend slope of cut 20 ft.
- 22.90 Angeles Crest Highway, on curve in cut, bears Northeast to
Mt. Wilson, W. to La Canada Ascend slope of cut 35 feet
- 23.80 Top of cut on North side of highway. Ascend Southwest slope
80 ft. thru burned area
- 25.80 Spur slopes S. 20° E. Ascend steep rocky southeast slope 250 feet
- 26.10 Telephone line, 4 wires, L.A. County Forestry Department bears
North 40° East and S. 40° West 25 links to angle pole,
thence West
- 32.50 Small ravine, Course South 30° East Continue ascent 115 ft. to
spur
- 33.86 The re-monumented position of the Cutting 1/4 Sec. Cor. of
Sections 25 and 30, bears West 1.59 chains distant
Said corner is a concrete post, 6 inches diameter,
flush with surface with brass tablet marked

COUNTY SURVEYOR

T 2 N

25 | 30

R 13 W | R 12 W

1/4 Sec. Cor
MONUMENT

- 34.70 Small spur, slopes South 30° East Level
- 35.70 Small ravine, Course South 30° East Continue ascent 300 ft.
- 41.30 South edge of firebreak, bears North 70° East and South 70° West
Ascend 5 ft.
- 42.11 Norway 1/4 section corner, which now refers to Sec. 25 only
of R. 13 W., and which is a granite stone 15 x 11 x 7 inches
marked 1/4 on one face, lying alongside of the remains of old
mound of stone and covered with loose dirt. In center of old
mound, with old stone alongside,
Set an ^{Iron} / post 3 ft. long, 1 in. diameter 27 inches in the
ground for 1/4 Section corner of Section 25 only of R 13 W.,
with brass cap marked

1/4 S 25 |

1937

from which

steel tower West M O T2" Southern California Edison Co. high

tension transmission line bears North 62° 43' East 1.66 chains dist.
 Raise a mound of stone, 3 ft. base, 2 ft. high, West of cor., 3 ft.
 distant

North 0° 02' West on a random and true line along East boundary of
 Sec. 25

Over rough mountains, thru dense brush

- 0.10 North edge of Firebreak, bears North 80° West and South 80° East,
 Descend North slope 20 feet
- 1.20 U.S.F.S. truck trail bears East to highway and West to Mt. Lukens
 and Earl Canyon
- 2.60 Same truck trail bears East and West
- 8.20 Same truck trail, bears East and West, U turn about 2 chains East
- 9.20 Same truck trail, bears North 70° East and S 70° W for about
 1 chain; thence North
- 12.00 Small ravine, Course North 20° East Continue descent 70 feet
- 16.00 Same truck trail, bears northeast and southwest. U turn about
 1 chain Northeast
- 16.90 Same truck trail, bears Northwest and Southeast, Descend 65 feet
- 18.40 Canyon, 10 links wide, dry, Course East, Ascend steep, southeast
 slope, 25 feet
- 18.90 Same truck trail, bears East to highway, about 10 chains and West
 about 3 chains to U turn to southeast, Ascend steep southeast
 slope 175 feet.
- 22.40 Spur, slopes South 50° East, Descend northeast slope 20 feet
- 26.00 Ravine, Course South 40° East, Ascend steep southwest slope 170 ft.
- 28.80 Spur, slopes South 60° East, Descend Northeast slope 35 feet.
- 29.67 The remonumented position of Outting corner of Sections 19, 24, 25, 30
 bears West 1.31 chains distant. Said corner is a concrete
 monument, 6 inches diameter, 6 inches above ground, with brass
 tablet marked

COUNTY SURVEYOR

T. 2 N

R 13 W	24	19	R 12 W
	25	30	

MONUMENT

in a mound of stone, with a granite stone 15x12x6 inches, with
 4 grooves on North and 2 grooves on South and 23 SGFR on E faces.

- 29.91 Steel Tower West MOT3 Southern California Edison Co. High
Tension transmission line bears North 44 links distant
- 31.30 Spur slopes North 60° East Continue descent of North
slope 145 feet
- 33.40 Telephone line, bears East and West
- 34.80 Ravine - near head, Course North 40° East Continue descent 40 ft.
- 36.70 Top of Out on South side of highway, Descend slope of out 90 ft.
- 37.70 Angeles Crest Highway, bears East to La Canada and West to
Mt. Wilson, level
- 38.00 Point for corner of 24 and 25 only, falls in highway

An unsuitable position for corner

Land rough mountainous

Soil rocky, 3rd and 4th rate

Timber, scattering live oak, undergrowth, oak brush,
wild lilac, manzanita, poison oak, mountain
mahogany, and yucca

North 0°02' West on a random and true line along East boundary
of Sec. 24

- 0.70 Edge of highway fill, Descend North slope 10 feet
- 0.95 The Norway witness corner for Sections 19, 24, 25 and 30 which
now becomes the witness corner for Sections 24 and 25 only
of R. 13 W., and which is a granite stone 24 x 20 x 10 inches, ly-
ing on the ground alongside of old mound of stone and marked
W.O. on top, and other marks visible on 4 side, but not
legible. In center of old mound of stone, with old stone
alongside,

Set an ^{iron} post 3 ft. long, 2 inches diameter, 27 inches in
the ground for witness corner to Sections 24 and 25 only of
R 13 W with brass cap marked

T 2 E	
R 13 W	
S 24	

825	

W O


1937 raise a mound

of stone, 4 ft. base, 2 ft. high, West of corner, 3 ft.
distant.

Thence North 1°14' West on a random and true line along East
boundary of Sec. 24.

Over rough mountains, thru dense brush, and scattering timber,
descend steep northeast slope 225 ft.

- 5.70 Creek, 2 links wide, 2 inches deep, in canyon, Course North 80° E.
Ascend steep S.E. slope 165 ft.

- 9.80 Spur, slopes E, Descend steep northeast slope 165 ft.
- 13.70 Rocky ravine, Course E, Ascend southeast slope 40 ft.
- 15.60 small spur, slopes East, Descend northeast, slope 20 ft.
- 16.60 Steep rocky ravine, 40 links wide, Course East, Ascend S.E. slope 60 ft.
- 18.20 Washed out, 30 links wide, 7 ft. deep. Course E, Continue ascent
- 21.20 Spur, slopes East, Descend steep northeast slope 85 ft.
- 23.80 Small ravine, Course North 70° East, Ascend Southeast slope 10 ft.
- 24.50 Pt. of spur, slopes North 70° East, Descend Northeast slope 105 ft. over steep bluffs facing North 70° East
- 29.30 Slide Canyon, 20 links wide, small stream of water, Course S 50° East, Ascend steep southeast slope 320 ft.
- 35.06 The Norway 1/4 Sec. cor. of Sections 19 and 24, which now refers to Sec. 24 only, of R. 13 W., and which is a granite stone, 18x9x8 inches marked  with top of rock broken off, with scattered rocks close by and no other rocks near. At old point, with original stone alongside, Set an Iron Post, 3 ft. long, 1 in. diameter, 27 inches in the groove, for 1/4 Sec. Cor. of Sec. 24 only of

R 13 W with brass cap marked

1/4 S 24

1937 from which
steel tower West M1 T1 high tension transmission line,
Southern California Edison Company bears North 86°42' East
89 chains distant, raise a mound of stone, 3 ft. base,
2 ft. high, West of Corner 3 ft. distant

Thence North 0°19' East on a random and true line along East boundary of Section 24

Ascend Southeast slope 10 ft.

- 0.50 Trail, bears North 60° West and South 60° East along top of spur sloping S 60° East Descend Northeast slope 190 ft.
- 6.10 Small ravine Course North 60° East Ascend southeast slope 20 ft.
- 6.90 Small spur, slopes North 60° East Descend Northeast slope 75 ft.
- 8.80 Small ravine Course North 70° East Ascend Southeast slope 30 ft.
- 10.40 Small spur slopes North 70° East Descend Northeast slope 55 ft.
- 11.90 Small ravine Course North 70° East Continue descent 45 ft.
- 14.20 Small ravine Course North 80° East Ascend Southeast slope 30 ft.
- 17.40 Small spur slopes East Descend Northeast slope 50 ft.
- 18.90 Small ravine Course East Ascend southeast slope 50 ft.

- 19.90 Small spur slopes East Descend steep northeast slope 145 ft.
- 23.00 Dark Canyon Creek, 4 links wide, 2 inches deep, Course S 80° East for about 3 chains; thence South 20° East Ascend 5 ft.
- 23.80 Road bears North 80° West and South 80° East Ascend 5 ft.
- 24.10 Leave dark canyon, ascend steep southwest slope 555 ft.
- 25.70 Power line, 2 wire bears North 50° West and South 50° East
- 26.37 The Cutting corner of Sections 13, 18, 19 and 24, bears West 57 links distant, a granite stone, 14 x 8 inches, 10 inches above ground, marked with 3 grooves on North and South faces and S G F R on East face
- 37.00 Small ravine Course S 60° West Continue ascent 10 ft.
- 37.80 Small ravine Course S 30° West Continue ascent 80 ft.
- 39.10 U.S.F.S. truck trail, bears North 70° West and S 70° East for about 8 chains to parking place on spur; thence Northwest. Ascend southwest slope 120 ft.
- 41.03 The corner of Sections 13, 18, 19 and 24, an iron post 2" in diameter, 10 inches above ground, marked and witnessed as described in the official record.
- Land rough mountainous
- Soil, rocky, 3rd and 4th rate
- Timber, scattering live oaks and fir, undergrowth oak brush, chamisal, mountain mahogany, laurel, wild lilac, poison oak, yucca, and sumac

RESURVEY OF SUBDIVISIONAL LINE IN T. 2 N., R. 12 W.

From the 1/4 Section corner between Sections 30 and 31, T. 2 N., R. 12 W.

West on a random line between Sections 30 and 31

- 36.02 A point 20 links South of the northwest corner of Sec. 31 hereinbefore described

Thence South 89° 41' East on a true line between Sections 30 and 31

Over rolling mountains, thru dense brush, Ascend northwest slope 17 ft.

- 1.41 Intersect the Norway East boundary of Sec. 36 at a point 1.92 chains South 1° 26' West of the renewed Norway corner of Sections 25 & 36 hereinbefore described.

At intersection Set an iron post, 3 ft. long, 2 inches diameter, 27 inches in the ground, for closing corner of Sections 30 and 31 on east boundary of Section 36, with brass cap marked

T 2 N	
R 13 S	R 12 W
S 36	S 30 C
1937	S 31 C

raise a mound of stone $3\frac{1}{2}$ ft. base, 2 ft. high, East of Cor.,
3 ft. dist.

- 1.56 An iron pipe, $2\frac{1}{2}$ inches diameter, flush with ground, filled
with concrete,
- 1.62 High tension transmission line on steel tower Southern Calif.
Edison Co. bears North and South
- 2.00 Small spur, slopes North, about 1 chain from ridge 6 ft.
above closing corner, Descend Northeast slope 50 ft.
- 5.60 Head of small ravine, Course North, Ascend northwest slope
25 ft.
- 8.00 Spur, slopes North 70° East, descend southeast slope 50 ft.
to road
- 9.20 Telephone line 14 wires, Southern California Edison Co.,
bears North 80° East and S 80° West
- 10.40 Old road bears North 60° East and South 60° West, Descend
southeast slope 120 ft.
- 14.80 Enter ravine, Course East, from South 70° West Descend 25 ft
- 16.10 Leave ravine, Course North 70° East from West, Ascent 10 ft.
- 16.60 Point of small spur, slopes North 20° East Descend 40 ft.
- 18.50 Enter small ravine, Course E., from North 70° West Descend 10 ft.
- 20.30 Leave ravine, Course South 50° East from West Ascend S.W.
slope 50 ft.
- 21.20 Small drain, Course South 20° West
- 22.40 Same telephone line bears North 40° W and South 40° East
- 23.20 Same old road, bears North 40° West and South 40° East
Continue ascent 35 ft.
- 24.40 Spur, slopes South 60° East, Descend East, slope 20 ft.
- 26.20 Old trail, bears North 60° West and South 60° East, Descend
steep northeast slope 240 ft. to $\frac{1}{4}$ Sec. Cor.
- 27.00 Center of telephone line 2 wires widely spaced, U.S.F.S.
bears N 20° W and South 20° East
- 33.50 Cabin bears North about 2 chains
- 34.90 Cabin bears North about $1\frac{1}{2}$ chains
- 35.06 Power line wood poles bears North and South
- 36.02 The quarter Section corner, which is a granite stone
 $10'' \times 7$ inches, 10 inches above ground, cemented in
place with lead and tack in top, marked $\frac{1}{4}$ on
North face. This corner is on top of a small, sharp
spur, sloping North 30° East. Alongside and S.E. of
old stone Set an iron post 3 ft. long, 1 inch
diameter 27 inches in the ground for $\frac{1}{4}$ section corner
with brass cap marked

from which

Old bearing tree, a live oak, 27 inches diameter bears S 56½°
West 104 links distant, marked 1/4 B T

The old B.T. in Sec. 30, the point for which falls in out for
roadway of Arroyo Seco Blvd. has disappeared, raised a mound of
stone 3 ft. base, 2 ft. high, south of corner, 3 ft. distant,
as ground to North is too steep to hold a mound.

Land rolling and mountainous

Soil rocky and gravelly, 3rd rate.

Timber, scattering live oak, undergrowth, chamisal, oak brush,
poison oak, sumac, mountain mahogany, laurel and yucca.

APPROVAL

OFFICE OF SUPERVISOR OF SURVEYS

Denver, Colorado Jan. 26, 1938

The foregoing field notes of the re-survey of the (Cutting)
West boundary of Sec. 31, T. 2 N., R. 12 W; of the (Norway)
East boundary of Sections 24, 25 and 36 T 2 N., R. 13 W.;
and of the West half of the North boundary of Section 31,
T. 2 N., R. 12 W. of the San Bernardino Meridian, in the State
of California, executed by John L. Warboys Cadastral Engineer,
under his special instructions dated August 11, 1937 having been
critically examined, and the necessary corrections and explana-
tions made, the said field notes and the resurveys they describe
are hereby approved.

(Signed)

Frank M. Johnson

Supervisor of Surveys