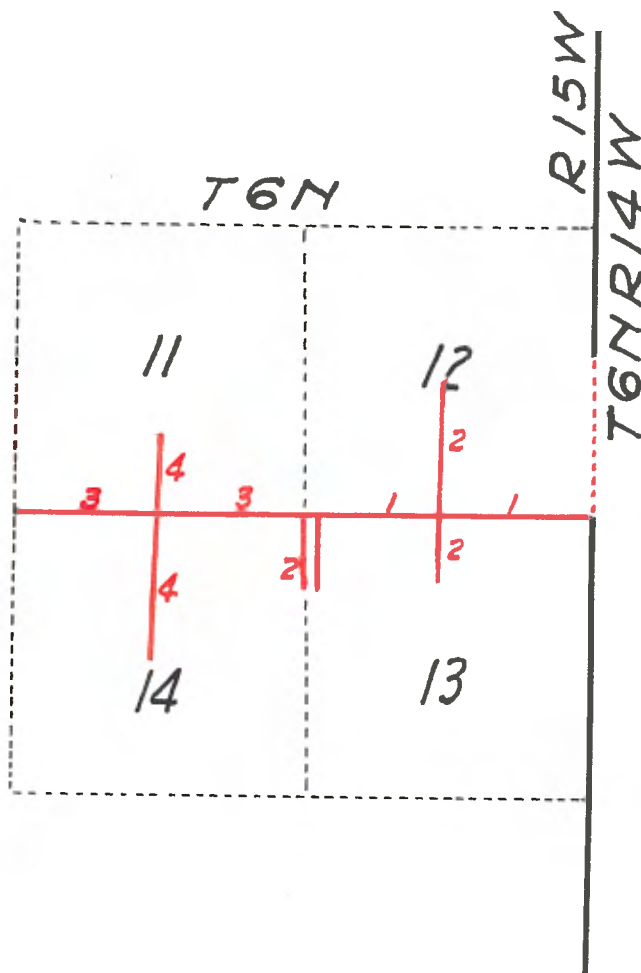


FIELD NOTES OF
 SURVEY OF LINES IN SEC. 11, 12, 13, 14, T. 6 N., R. 15 W., S.B.M.

Vol. 163:32 pages 1-5
 John Goldsworthy
 Aug. 18, 1877

Copied from notes on file
 at United States Cadastral
 Engineer's Office, Glendale,
 Calif. Copied and compared
 by A. C. Johnson and W. F.
 Kragness on October 15, 1940



FIELD NOTES OF
SURVEY OF LINES IN SEC. 11, 12, 13, 14, T. 6 N., R. 15 W. S.B.M.

Vol. 163:32-pages 1-5 }
John Colawerthy }
Aug. 18, 1877 }

To find the variation to be adopted in the subdivision of this Township, I set my instrument at the corner to Sections 7, 12, 13 & 14, T. 6 N., R. 14 & 15 W., S.B.M., from which point a flag in the 1/4 section corner between Sections 7 and 12 is visible and bears N. 14°15'W, hence I find that to retrace this line or run parallel thereto I must adjust my compass to a variation of 14° 15' East.

Subdivision commenced Nov. 9, 1877

WEST ON TRUE LINE BETWEEN 12 AND 13

Var. 14°15'E.

- 5.00 To base of hill on South side of San Francisco Canyon Course West Southwest enter canyon
- 30.00 San Francisco Creek 50 links wide Course S.W.
- 40.00 To 1/4 Sec. Cor. Set elder post 4" in diameter, 4 ft. long, with charred stake on W. side 1 ft. in ground, raised mound of earth 2 ft. high, 4 ft. diameter, with pits 18 inches square, 12 inches deep,
- 50.50 To Los Angeles & Ft. Tejon Road Course Southwest
- 56.00 Top of spur from North side San Francisco Canyon Course South 3 chains
- 60.00 Ravine 150 links wide Course South
- 71.00 Thos. Delands adobe house 10 chains South of line
- 77.50 Top of spur course Southwest
- 80.00 Corner to Sections 11, 12, 13 and 14
Set 4 x 4 elder post 4 ft. long with charred stake on West side, 1 foot in ground and raised earth and stone mound 4 ft. diameter with pits 18x18x12 on West slope of spur.

Land rolling

Soil 2nd rate

T. 6 N., R. 15 W., S.B.M.

From this point on account of the steep and broken character of the hills, I could not proceed North.

NORTH THRU SECTION 12

Var. 14°15' E.

- 5.00 Los Angeles & Ft. Tejon Road Course Southwest
10.00 To base of hills on North side San Francisco Canyon Course northeast
and southwest drove an elder post. Ascend
25.00 To base of high mountain
40.00 To center point of Section 12, Set stone 7x5x20 2/3 in the
ground in middle of stone marked CP812 on steep South slope of
mountain. Could proceed no farther in this direction on account
of the steepness of the mountain.

Land rolling and quite hilly

Soil 2nd rate

SOUTH THRU SECTION 13

Var. 14°15' E.

- 2.00 San Francisco Creek 10 links wide Course West southwest
6.00 To base of steep hill
12.00 To top of spur Course northwest
29.00 To point could proceed no farther on account of thick underbrush
and the steepness of the mountain. Set stone 7x14x19 - 2/3 in ground
in stone mound marked W P C P S 13 for Witness post of center point
Sec. 13,

Land very hilly

Soil 2nd rate

SOUTH BETWEEN SECTIONS 13 & 14,

Var. 14°15' E.

- 5.00 Top of spur Course southwest
14.50 Los Angeles & Ft. Tejon Road Course West and Northeast
15.00 San Francisco Creek 10 links wide Course West
18.00 Base of steep hills on South side San Francisco Canyon

T. 6 N., R. 15 W. S.B.M.

- 18.92 Live oak 36 inches in diameter
20.00 Point on North slope of steep mountain could run no farther in this direction on account of the steep and precipitious character of the mountains.

Set elder post 4 inches in diameter, 4 ft. long with charred stake in South side, 1 foot in ground and raised mound of earth $4\frac{1}{2}$ ft. diameter, 2 ft. high with pits 18x18x12 for witness post to 1/4 Section Corner, from which a

Live oak 36" diameter bears North distant 108 links

Land very hilly and broken

Soil 3rd rate

WEST ON TRUE LINE BETWEEN SECTIONS 11 & 14 NOV. 10, 1877

Var. 14°15' E

- 6.50 To ravine 50 links wide Course Southwest
25.00 Top of spur Course South
40.00 To 1/4 Sec. corner on top of low ridge Course Southwest Set post 4" diameter, 4 ft. long with charred stake on West side, 1 ft. in ground, and raised mound of earth $4\frac{1}{2}$ ft. diameter 2 ft. high with pits 18x18x12 from which a live oak 30 inches in diameter bears South $88\frac{1}{4}$ ° East distant 355 links.
52.00 Canon 3 chains wide Course southeast and creek 10 links wide
55.00 Hill on West of canon Ascend
80.00 Corner to Sections 10, 11, 14 and 15, Set stone 8x15x20 - 2/3 in. in ground, 4 notches on South corner and 2 on East corner
Land very mountainous
Soil 3rd rate

I could proceed neither North, West, nor South, from this point on account of the steepness of the mountain.

T. 6 N., R. 15 W., S.B.M.

NORTH THRU SECTION 11

Var. 14°15' E.

- 5.00 Ravine 0.50 chains wide, Course southwest Ascend steep
South slope of mountain
- 20.00 To point could go no farther in this direction on account of
the steepness of the mountain. Set stone 6x12x19-2/3 in ground
marked W.P.C.P.S. 11 for witness post of center point of Sec.11.
Land very mountainous
Soil 3rd rate

SOUTH THRU SECTION 14

Var. 14° 15' E.

- 17.00 Ravine from northwest to south 4 chains wide, growth of willows
- 24.00 Head of small spring
- 32.00 Los Angeles & Fort Tejon Road Course southwest
- 36.00 Creek 30 links wide Course southwest 2.00 chains below this
point the San Francisco Canyon closes up to a narrow gorge
between two steep rocky hills just wide enough for road.
- 39.00 Ravine 75 links wide from Southeast to Southwest.
- 39.60 To bunch of small ash.
- 40.00 Center point of Section 14, at base of steep mountain on the
South side of San Francisco Canyon Course East and West
Set elder post, 4 inches in diameter, 4 ft. long, with charred
stake in south side 1 foot in ground and raised mound of earth
4-1/2 ft. diameter, 2 ft. high, with pits 18x18x12
Land very hilly
Soil 2nd rate

Finished the subdivision of all of the surveyable land in this
township, the remainder being mountainous and unsurveyable.

John Goldsworthy
U.S. Deputy Surveyor

T. 6 N., R. 15 W. S.B.M.

REPORT

The only agricultural land in this township is in San Francisco Canyon a small valley in the mountains from 12 to 15 chains wide, which extends from East boundary of the Township West and southwest about 1-3/4 miles.

It is well wooded and well watered by the San Francisco Creek.

The remainder of this township is steep barren mountains and unsurveyable.

John Goldsworthy
U. S. Deputy Surveyor.

U.S. SURVEYOR GENERALS OFFICE

San Francisco, Cal.
March 15, 1878

The foregoing field notes of the surveys of the Subdivision lines of a portion of T. 6 N., R. 15 W., San Bernardino Meridian, in the State of California, executed by John Goldsworthy, U.S. Deputy Surveyor, under his contract dated August 18, 1877, having been critically examined and the necessary corrections and explanations made, the said field notes and the surveys they describe are hereby approved.

J. W. Ames

U.S. Surveyor General for California
