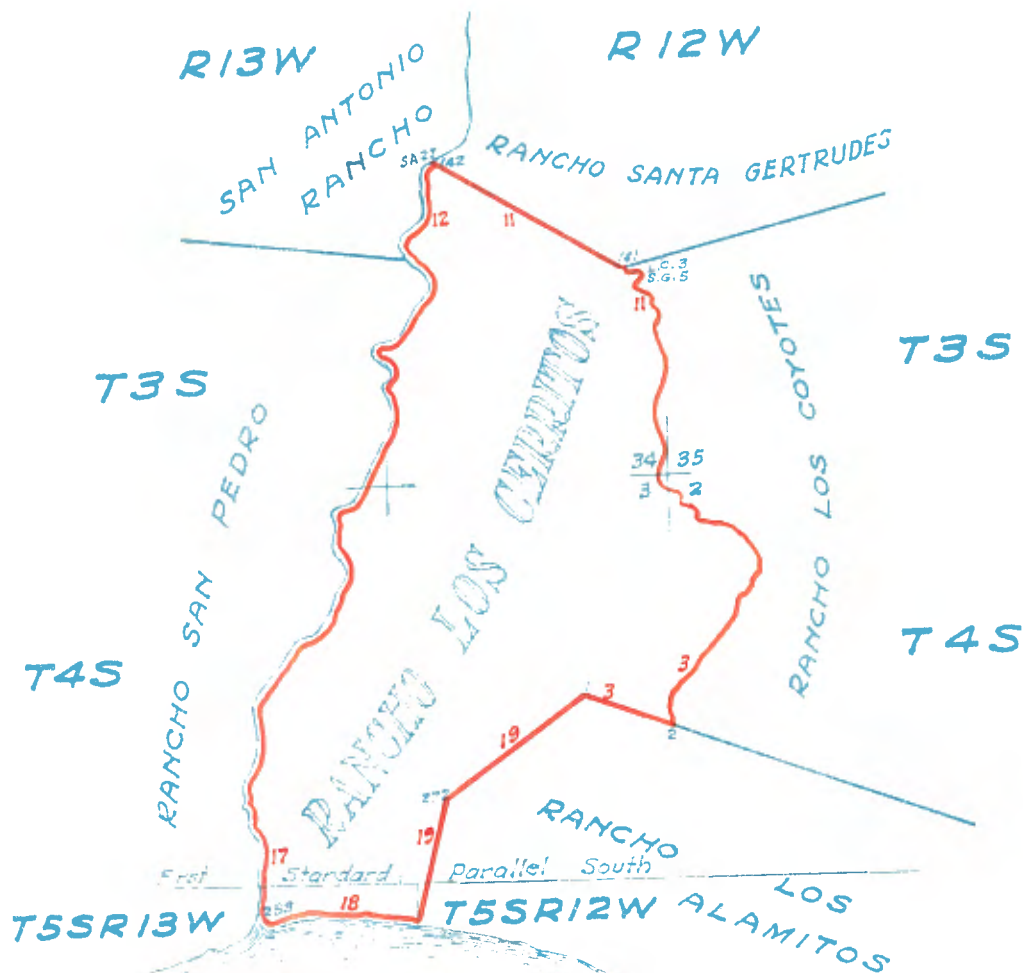


FIELD NOTES OF  
RANCHO LOS CERRITOS

Copied from Photostat Copies furnished by the  
Dept. of National Archives of the United States.

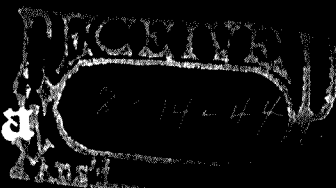
Field Notes filed with Private Land Claim 357  
California

Photostats filed with C.S. 9430 in Vault.



No. 6234

United States of America



General and County Engineer

Referred to W. Neil Franklin

For W. Neil Franklin

## THE NATIONAL ARCHIVES

To all to whom these presents shall come, Greeting:

I Certify That the annexed copy, or each of the specified number of annexed copies, of each document listed below is a true copy of a document in the official custody of the Archivist of the United States.

Field Notes filed with California Private Land Claim 357.

This document is from the records of the General Land Office.

In testimony whereof, I, SOLON J. BUCK, Archivist of the United States, have hereunto caused the Seal of the National Archives to be affixed and my name subscribed by the ~~Director of Reference Service~~ <sup>Chief, General Reference Division</sup> or, in his absence, by the Administrative Secretary of the National Archives, in the District of Columbia, this 7th day of August 19 44.

Solon J. Buck  
Archivist of the United States  
By W. Neil Franklin  
~~Director of Reference Service~~  
Chief, General Reference Division

Vol. 246:1-28  
HENRY HANCOCK

LOS CERRITOS

U. S. Surveyor General's Office  
San Francisco, California

Under and by virtue of the provisions of the 13th Section of the Act of Congress of the 3d of March, 1851, entitled "An Act to ascertain and settle the private land claims in the State of California", and of the 12th Section of the Act of Congress approved on the 31st of August, 1852, entitled "An Act making appropriations for the civil and diplomatic expenses of the Government for the year ending the 30th of June, 1853, and for other purposes" and whereas the U. S. District Court for the Southern District of California rendered a decision whereby it recognized and confirmed the title and claim of Juan Temple to the tract of land designated as "Los Cerritos", and the Attorney General of the United States having given notice that no appeal to the Supreme Court of the United States would be further prosecuted therein as appears by the certified copy of the decree of the Said District Court, a copy of which is hereunto annexed,

The said tract of land was surveyed in conformity to the grant thereof and the said decision and I do hereby, certify that the accompanying map is a true and accurate plat of the said tract of land, as appears by the field notes of the survey thereof made by Henry Hancock, Deputy Surveyor, under the directions of this office, which having been examined and approved, remain of record in the said office,

And I do further certify that by virtue of the provisions of the Act of Congress, approved July 1st, 1864, respecting the survey and locations of confirmed private land claims in the State of California, a notice of said survey was published in accordance therewith, in two newspapers to wit: the "American Flag" a newspaper published in the City and County of San Francisco State of California the first publication being on the 29th day of September 1866, and the last on the 20th day of

October, 1866.

Also in the "Wilmington Journal" a newspaper published in the County of Los Angeles, State aforesaid being a newspaper published near to where the Said land is located the first publication being on the 20th day of October, 1866 and the last on the 11th day of November, 1866.

And I do further certify that the plat of said survey was retained in this office, subject to inspection during all of ninety days and until the expiration thereof from the date of the first publication and that no protest against said survey has been filed in this office up to the date of this certificate.

And I do further certify that under and by virtue of the said confirmation and other proceedings had in the matter, the said Juan Temple is entitled to a patent from the United States upon the presentation hereof to the General Land Office for the said tract of land called "Los Cerritos", the same being bounded and described as follows, to wit:

Vol. 246:1-28  
Henry Hancock

## LOS CERRITOS

Beginning at an Oak post four and one half feet long and six inches square in a valley, being a corner of the Rancho "Los Alamitos".

Thence, according to the ~~true~~ meridian, the variation of the magnetic needle being Fourteen degrees, fifteen minutes East, South, seventy degrees, twenty eight minutes East, one hundred and eight chains and forty seven links to a Sycamore tree forty inches in diameter marked "L.A. 31" and "L.C. No. 2" Station, in the natural **Sanja** which forms the Eastern boundary of this Rancho, the Sycamore tree above referred to being an old boundary mark.

Thence, meandering up the center of the said natural **Sanja** North, thirty one degrees West, one chain and sixteen links to Station.

Thence, North two degrees West, twelve chains to Station.

Thence, North, nine degrees thirty minutes East, three chains to Station.

Thence, North, twenty nine degrees fifteen minutes East, five chains to Station.

Thence, North ~~fifty~~ one degrees thirty minutes East, two chains to Station.

Thence, North, ten degrees, fifty five minutes East, two chains to Station.

Thence, North, thirty one degrees, forty five minutes East, nine chains to Station.

Thence, North, forty four degrees thirty minutes East, four chains to Station.

Thence, North fifteen degrees thirty minutes East, three chains to Station.

Thence, North, forty two degrees fifteen minutes East, seven chains to Station.

Thence, North twenty seven degrees, thirty minutes East, two chains to Station.

Thence North, forty two degrees ~~fifteen~~ minutes East, four chains to Stations.

Thence, North, seventy three degrees, fifteen minutes East, three chains to Station.

Thence, North, thirty three degrees, forty five minutes East, ~~seven~~ chains to Station.

Thence, North, forty five degrees, forty five minutes East, nine chains to Station.

Thence, North, thirty degrees East, four chains to Station.

Thence, North, sixty eight degrees, forty five minutes East, three chains to Station.

Thence, North, forty-five degrees, forty five minutes East, six chains to Station.

Thence, North, seventy three degrees, fifteen minutes East, seven chains to Station.

Thence, North, thirty three degrees thirty minutes East, ten chains to Station.

Thence, North, forty seven degrees East, seven chains to Station.

Thence North, fifty eight degrees East, four chains to Station.

Thence, North, thirty degrees, forty five minutes East, five chains to Station.

Thence, North, forty two degrees East, six chains to Station

Thence, North twenty degrees East, ten chains to Station.

Thence, North, eleven degrees fifteen minutes East, nine chains to Station.

Thence, South, seventy eight degrees fifteen minutes East, four chains to Station.

Thence, North, sixty seven degrees thirty minutes East, two chains to Station.

Thence, North, six degrees East, three chains to Station.

Thence, North, forty seven degrees fifteen minutes East, four chains to Station.

Thence, North, twenty nine degrees, fifteen minutes East, four chains to Station.

Thence, North, eleven degrees, fifteen minutes East, eleven chains to Station.

Thence, North, four degrees, thirty minutes West, five chains to Stations.

Thence, North, eighteen degrees, fifteen minutes East, six chains to Station

Thence, North, forty seven degrees, fifteen minutes East, six chains to Station.

Thence, North, twenty degrees thirty minutes West, one chain to Station.

Thence, North, sixty seven degrees forty five minutes East, four chains to Station.

Thence, North, fifty two degrees, forty five minutes East, two chains to Station.

Thence, North, twenty five degrees, thirty minutes East, three chains to Station .

Thence, North, sixty degrees, fifteen minutes East, two chains to Station

Thence, South, fifty nine degrees forty five minutes East, two chains to Station.

Thence North, forty seven degrees thirty minutes East, three chains to Station.

Thence, North, thirty two degrees East, three chains to Station.

Thence, North, forty four degrees thirty minutes East, two chains to Station.

Thence, North, thirty four degrees ~~thirty~~ **forty five** minutes East, four chains to Station.

Thence, North, twenty one degrees thirty minutes East, six chains to Station

Thence, North, twenty four degrees, thirty minutes ~~East~~ East, three chains to Station.

Thence, North, thirty two degrees East, two chains to Station.

Thence, North, twenty one degrees thirty minutes West, two chains to Station.

Thence, North, nine degrees, ~~thirty five~~ **thirty five** minutes West, three chains to Station.

Thence, North, four degrees, fifteen minutes East, three chains to Station.

Thence, North, thirty minutes West, five chains to Station.

Thence, North fifty nine degrees forty five minutes West, three chains to Station.

Thence, North, thirty one degrees West, one chains to Station.

Thence, North, three degrees West, five chains to Station.

Thence, North, forty degrees, thirty minutes West, two chains to Station.

Thence, North, twelve degrees West, two chains to Station.

Thence, North fifty two degrees thirty minutes West, three chains to Station.

Thence, North, sixty nine degrees, fifteen minutes West, three chains to Station.

Thence, North, thirty three degrees fifteen minutes West, three chains to Station.

Thence, North, fifty nine degrees fifteen minutes ~~West~~ West, six chains to Station.

Thence, North, thirty ~~nine~~ degrees thirty minutes West, three chains to Station.

Thence, North, eighty two degrees thirty minutes West, two chains to Station.

Thence, North, forty one degrees thirty minutes West, five chains to Station.



Thence, North, thirty two degrees, fifteen minutes West, three chains to Station.

Thence, North thirty five degrees, forty five minutes West, four chains to Station.

Thence, North, thirty four degrees West, seven chains to Station.

Thence, North, fifty three degrees fifteen minutes West, one chain to Station.

Thence, North, sixty eight degrees West, seven chains to Station

Thence, North, fifty three degrees West, seven chains to Station.

Thence, North, sixty four degrees thirty minutes West, five chains to Station.

Thence, North, fifty degrees, forty five minutes West, six chains to Station.

Thence, South seventy eight degrees, fifteen minutes West, thirteen chains to Station.

Thence, North, eighty eight degrees, fifteen minutes West, four chains to Station.

Thence North, twenty nine degrees West, six chains to Station.

Thence, South, eighty eight degrees West, five chains to Station.

Thence, North, fifty degrees, forty five minutes West, two chains to Station.

Thence, North, fourteen degrees, fifteen minutes West, five chains to Station.

Thence, North, sixty degrees thirty minutes West, eight chains to Station.

Thence, North, twenty four degrees forty five minutes East, seven chains to Station.

Thence, North, forty degrees, forty five minutes West, five chains to Station.

Thence North, eight degrees thirty minutes West, three chains to Station.

Thence, North, seventy seven degrees fifteen minutes West, five chains to Station.

Thence, North, sixty five degrees thirty minutes West, nine chains to Station.

Thence, North, eighty degrees fifteen minutes West, six chains to Station.

Thence, North, forty seven degrees, fifteen minutes West, four chains to Station.

Thence, North, seventy one degrees West, three chains to Station.

Thence, North, thirty eight degrees West, eight chains to Station.

Thence, North, eleven degrees fifteen minutes East, ten chains and ninety two links to a post at intersection with the South boundary of Township Three South, Range Twelve West, ten chains and eighty five links West of corner to Sections Two, Three, Thirty four and Thirty five.

Sixteen chains and ninety nine links to Station

Thence, North, eleven degrees, forty five minutes West, seven chains to Station.

Thence, North, thirty four degrees, fifteen minutes East, four chains to Station.

Thence, North, nine degrees thirty minutes West, two chains to Station.

Thence, North, thirty six degrees East, five chains to Station.

Thence, North, eight degrees West, ten chains to Station.

Thence, North, twenty six degrees, West, eight chains to Station.

Thence, North, thirty five degrees, thirty minutes West, ten chains to Station.

Thence, North, twenty one degrees, thirty minutes East, nine chains to Station.

Thence, North, six degrees, forty five minutes East, five chains to Station.

Thence, North, six degrees East, ten chains to Station.

Thence, North, twenty six degrees West, four chains to Station.

Thence, North, twenty degrees forty five minutes East, sixteen chains to Station.

Thence North, seventeen degrees forty five minutes East, six chains to Station.

Thence, North, forty three degrees, thirty minutes East, six chains to Station.

Thence, North, thirty seven degrees East, six chains to Station.

Thence, North, twenty eight degrees West, six chains to Station

Thence, North, six degrees forty five minutes East, eighteen chains to Station.

Thence, North, five degrees West, eight chains to Station.

Thence, North, thirty seven degrees thirty minutes West, eight chains to Station.

Thence, North, five degrees, forty five minutes East, three chains to Station.

Thence, North, one degree, thirty minutes East, five chains to Station.

Thence, North, forty three degrees West, nine chains to Station.

Thence, North, nine degrees thirty minutes West, five chains to Station.

Thence, North, twenty three degrees forty five minutes East, seven chains to Station.

Thence, North, sixty two degrees East, three chains to Station.

Thence, North six degrees, thirty minutes East, five chains to Station.

Thence, North, four degrees forty five minutes East, twelve chains to Station.

Thence, North, thirty degrees, fifteen minutes West, four chains to Station.

Thence, South, sixty four degrees, thirty minutes West, two chains to Station.

Thence, North, fifty eight degrees, thirty minutes West, five chains to Station.

Thence, North, forty four degrees, West, sixteen chains to Station.

Thence, North, fifty two degrees, fifteen minutes East, one chain to Station.

Thence, North, sixty five degrees thirty minutes West, three chains to Station.

Thence, North, thirty three degrees, forty five minutes West, five chains to Station.

Thence, North, on degree thirty minutes East, four chains to Station.

Thence, North, fourteen degrees West, three chains to Station.

Thence, North, six degrees West, three chains to Station.

Thence, North, seventeen degrees thirty minutes East, one chain to Station.

Thence, North, seventy eight degrees, thirty minutes East, three chains to Station.

Thence, North, fifty degrees, fifteen minutes East, three chains to Station.

Thence, North, eleven degrees, East, four chains to Station.

Thence, North, nineteen degrees thirty minutes West, eighty five links to Station.

Thence, North, forty four degrees thirty minutes West, three chains to Station.

Thence, North, seventy three degrees West, one chain to Station.

Thence, South, seventy eight degrees West, one chain to Station.

Thence, South, fifty nine degrees, thirty minutes West, two chains to Station.

Thence, South, seventy degrees West, four chains to Station.

Thence, North, seventy nine degrees thirty minutes West, one chain to station.

Thence, North, forty six degrees fifteen minutes West, five chains to Station.

Thence, North, sixty two degrees West, one chain to Station.

Thence, North, twenty nine degrees fifteen minutes West, eight chains to a Sycamore post marked "S.G.5" and "L.C.3", Station and North East corner of this Rancho and a corner to the "Santa Gertrude" Rancho on the left bank of the Sanja.

Thence, along the Southerly boundary of the "Santa Gertrudes" Rancho, North sixty degrees, forty five minutes West two hundred and fifty four chains to Station in the center of the San Gabriel River from which Station twenty seven of the Rancho "San Antonio" bears North, seventy five degrees East, distant seven chains and fifty links.

Thence meandering down the center of the San Gabriel River, South, seventy five degrees West, seven chains to Station.

Thence, South, forty one degrees West, six chains to Station.

Thence, South, two degrees, thirty minutes West, twenty four chains and fifty links to Station.

Thence, South, twenty six degrees, thirty minutes East, twelve chains and eighty links to Station.

Thence, South, five degrees, thirty minutes East, thirteen chains and fifty links to Station.

Thence, South twenty one degrees West, fifteen chains and fifty links to Station.

Thence, South, thirty three degrees, thirty minutes West, five chains to Station.

Thence, South, seventy one degrees West, eighteen chains and fifty links to Station.

Thence, South, forty degrees West, fifteen chains and fifty links to Station.

Thence, South, eight degrees, forty five minutes East, seventeen chains to a ~~stake~~, Station.

Thence, South, seventy degrees, fifteen minutes East, six chains and twenty seven links to a stake, Station, at the North East corner of

the Rancho "San Pedro" and South East corner of Rancho "San Antonio".

Thence, meandering down the right bank of the San Gabriel River South fifty eight degrees East, three chains and fifty links to Station.

Thence, South, forty four degrees East, eleven chains and sixty links to Station.

Thence, South, sixty three degrees, forty five minutes East, fourteen chains and fifty links to Station.

Thence, South, twelve degrees East, sixteen chains to Station.

Thence, South, thirty degrees, thirty minutes West, fourteen chains and fifty links to Station.

Thence, South, fifty four degrees, thirty minutes West, four chains and fifty links to Station.

Thence, South, thirty four degrees, fifteen minutes, West, Twenty four chains and fifteen links to Station.

Thence, South, twenty seven degrees, thirty minutes West, twenty four chains and sixty eight links to Station.

Thence, South, sixty three degrees, thirty minutes West, fourteen chains and forty one links to Station.

Thence, South, eighty five degrees West, at four chains and fifty eight links intersects line between Ranges twelve and thirteen West, three chains and thirty seven links South of corner to Sections twenty four twenty five, nineteen and thirty Township Three South. Fifteen chains and ninety seven links to Station.

Thence, South, thirty nine degrees thirty minutes West, nine chains and forty three links to Station.

Thence, South, twenty one degrees, thirty minutes East, six chains to Station.

Thence, South, thirty six degrees, thirty minutes East, eleven chains and thirty five links to Station.

Thence, South, seventy four degrees, forty five minutes East, seven chains and fifty three links to Station.

Thence, South sixty degrees East, five chains to Station.

Thence, South twenty six degrees, thirty minutes East, five chains and twenty one links to Station.

Thence, South, Twenty six degrees West, eleven chains and eighty nine links to Station.

Thence, South, seventy-three degrees, thirty minutes West, seven chains to Station.

Thence, South, five degrees East, thirteen chains and fifty links to Station.

Thence, South, nineteen degrees, thirty minutes East, eleven chains to Station.

Thence, South, fifty one degrees, forty five minutes East, one chain and seventy links to Station.

Thence, South, nine degrees, thirty minutes East, two chains and ninety four links to Station.

Thence, South, twenty four degrees, thirty minutes East, four chains and fifty links to Station.

Thence, South fifty seven degrees, fifteen minutes East, ten chains and eighty one links to Station.

Thence, South, sixteen degrees, forty five minutes West, seven chains and forty links to Station.

Thence, North, eighty nine degrees West, six chains and forty links to Station.

Thence, South, twenty degrees West, five chains to Station.

Thence, South, twenty six degrees, thirty minutes East, five chains and fifty links to Station.

Thence, South, eighteen degrees, thirty minutes West, fourteen chains and forty links to Station.

Thence, South, twenty six degrees, fifteen minutes West, seven chains and thirty links to Station.

Thence, South, forty three degrees, forty five minutes West, eighteen chains and eighty links to Station.

Thence, South, thirty degrees West, nineteen chains and sixty three links to Station.

Thence, South, forty three degrees, fifteen minutes West, five chains and seventeen links to Station.

Thence, South, seventy nine degrees West, six chains and thirty one links to Station.

Thence, South, fifty seven degrees West, three chains and seventy six links to Station. on the right bank of the San Gabriel River, on the South boundary of Township Three South, Range Thirteen West one chain and twenty four links East of quarter Section corner on the South boundary of Section Thirty six.

Thence, South, fifty six degrees, forty five minutes West, eighteen chains and thirty seven links to Station.

Thence, South, seventy seven degrees, fifteen minutes West, six chains to Station.

Thence, South, fifty seven degrees West, seven chains and twenty seven links to Station.

Thence, South, fifty two degrees West, fifteen chains and seventy three links to Station.

Thence, South, fifteen degrees, thirty minutes West, eight chains to Station.

Thence, South, thirty seven degrees forty five minutes East, seven chains and ninety one links to Station.

Thence, South, fifty five degrees, fifteen minutes East, six chains to Station.

Thence, South, fifty one degrees forty five minutes East, eight chains to Station.

Thence, South, seventy eight degrees East, six chains and fifty links to Station.

Thence, South, Twenty eight degrees, thirty minutes West, twenty one chains and twenty links to Station.



Thence, South, nine degrees, thirty minutes East, six chains to Station.

Thence, South, seventeen degrees East, ten chains to Station.

Thence, South, twenty four degrees East, seven chains and sixty two links to Station on the right bank of San Gabriel River, two chains wide, A ranch house and out-buildings are on the opposite bank of the River, distant fifteen chains at the Western end of the Western slope of the "Los Cerritos," on the Northern side of said slope.

Thence, South, sixty five degrees fifteen minutes East, ten chains to Station.

Thence, South, twenty four degrees East, eight chains and fifty links to Station.

Thence, South, fifteen degrees, thirty minutes West, ten chains to Station.

Thence, South, sixty degrees, West, five chains to station.

Thence, South, thirty five degrees forty five minutes West, six chains to Station.

Thence, South, twenty three degrees thirty minutes West, sixteen chains to Station.

Thence, South, fourteen degrees, forty five minutes West, ten chains and eighty links to Station.

Thence, South, twenty four degrees, thirty minutes West, ten chains to Station.

Thence, South, forty degrees, thirty minutes West, six chains To Station.

Thence, South, sixty eight degrees thirty minutes West, four chains and eighty links to Station.

Thence, South, forty seven degrees, fifteen minutes West, seven chains to Station.

Thence, South, sixty one degrees thirty minutes West, ten chains to Station.

Thence, South, forty seven degrees, thirty minutes West, seven chains to Station.

Thence, South, sixty two degrees, thirty minutes West, six chains, and twenty links to Station.

Thence, South, forty eight degrees, fifteen minutes West, eleven chains to Station.

Thence, South, forty four degrees, forty five minutes West, nine chains to Station.

Thence, South, thirty degrees, fifteen minutes West, eleven chains and fifty links to Station.

Thence, South, forty degrees, thirty minutes West, twenty six chains and sixty links to Station.

Thence, South, twenty five degrees West, ten chains and fifty links to Station.

Thence, South, forty degrees, thirty minutes West, eleven chains and fifty eight links to Station.

Thence, South, twenty six degrees West, seven chains and twenty links to Station.

Thence, South, forty six degrees, West, eight chains and thirty links to Station.

Thence, South, five degrees West, three chains and fifty links to Station.

Thence, South, forty five degrees East, four chains and forty links to Station.

Thence, South, one degree West, three chains and eighty seven links to Station.

Thence, South, twenty six degrees thirty minutes East, five chains and thirteen links to Station.

Thence, South, one degree East six chains and fifty links to Station.

Thence, South, twenty two degrees West, twelve chains and fifty links to Station.

Thence, South, one degree West, four chains to Station.

Thence, South, thirty two degrees, forty five minutes East, seven chains and fifty links to station.

Thence, South, five degrees West, five chains and eighteen links to Station.

Thence, South, thirty degrees thirty minutes West, ten chains to Station.

Thence, South, seven degrees West, eight chains to Station.

Thence, South, one degree, fifteen minutes East, twelve chains to Station.

Thence, South, thirty six degrees fifteen minutes West, fifteen chains and fifty links to Station.

Thence, South, six degrees West, twenty six chains and fifty links to Station.

Thence, South, thirty three degrees, fifteen minutes East, fifteen chains and seventy links to Station.

Thence, South, three degrees forty five minutes West, thirteen chains and fifty links to Station.

Thence, South, forty three degrees, thirty minutes East, thirteen chains to Station.

Thence, South, ten degrees West, four chains and twenty two links to Station.

Thence, South, twenty six degrees thirty minutes East, twelve chains to Station.

Thence, South, forty nine degrees East, three chains and fifty links to Station.

Thence, South, Twenty four degrees, thirty minutes West, thirty three chains and fifty links to Station.

Thence, South, fifteen degrees, thirty minutes East, at fourteen chains intersects the First Standard parallel line South thirteen chains and ninety links East of quarter Section corner on the South boundary of Section Three, Township Five South, Range Thirteen West, nineteen chains to Station.

Thence, North, ~~sixty~~ fifty five degrees East, two chains and thirty links to Station.

Thence, South sixteen degrees, fifteen minutes East, four chains and fifty links to Station.

Thence, South, fourteen degrees, fifteen minutes West, eleven chains and fifty links to Station.

Thence, South, seventy five degrees, fifteen minutes West, ten chains to Station.

Thence, South eighteen degrees, thirty minutes West, nine chains to Station.

Thence, South, forty nine degrees East, ten chains to Station.

Thence, South, nineteen degrees, thirty minutes West, seventeen chains to Station, at the mouth of the San Gabriel River on the line of high water mark of the Pacific Ocean, being the South West corner of this Rancho.

Thence, crossing the mouth of the San Gabriel River, North, twenty five degrees East, twenty three chains to Station.

Thence, South, twenty two degrees East, twelve chains to Station on the left bank of the San Gabriel River, at the mouth of same.

Thence, along the shore of the Pacific Ocean at the line of high water mark, North, seventy degrees East, twenty seven chains, to Station.

Thence, South, four degrees, thirty minutes West, one chain to Station.

Thence, South, thirty degrees, thirty minutes West, four chains to Station.

Thence, South, seventy two degrees West, four chains to Station.

Thence, North, sixty nine degrees, thirty minutes West, three chains to Station.

Thence, South, sixty seven degrees, West, eight chains to Station.

Thence, South, sixty eight degrees, thirty minutes East, five chains to Station.

Thence, North, eighty three degrees, fifteen minutes East, twenty two chains to Station.

Thence, North, eighty six degrees, ~~forty five~~ minutes East, forty chains to Station.

Thence, North, eighty five degrees, forty five minutes East, twelve chains to Station.

Thence, South, seventy six degrees, thirty minutes East, crossing a low beach ten chains to Station at a perpendicular bluff, at the line of ordinary high water mark.

Thence, along the edge of said bluff, South, eighty eight degrees, fifteen minutes East, twenty six chains to Station.

Thence, South, eighty three degrees East, seventeen chains to Station.

Thence, North, eighty four degrees forty five minutes East, four chains to Station.

Thence, South, eighty four degrees East, thirteen chains to Station.

Thence, South, eighty one degrees, thirty minutes East, twenty four chains to a post Station and South East corner of this Rancho and South West corner of the Rancho "Los Alamitos".

Thence, over an undulating plain on the line of the former juridical possession of this Rancho, North thirteen degrees twenty minutes East, at fifty chains intersects the first Standard line South, eight chains and fifty links East of corner to ranges Twelve and Thirteen West; one hundred and forty seven chains to a rock eighteen inches in diameter, Station and an old boundary mark.

Thence, North, fifty two degrees, twenty one minutes East, fifty links to a road, course North, fifty degrees West, thirty nine chains to the base of "Los Cerritos", bearing East and West. Sixty four chains to the top of nearly the highest part of "Los Cerritos", bearing North West and South East. Eighty nine chains to the Northern base of "Los Cerritos" and enters a valley, one hundred and ninety nine chains to the point of beginning containing twenty seven thousand and fifty four acres and

thirty six hundredths of an acre and being designated upon the plats of the public surveys as Lot numbered Forty two Township Three South, Range Twelve West, Lot numbered Thirty nine Township Three South Range Thirteen West, Lot numbered Forty Township Three South, Range Thirteen West, Lot numbered Forty one, Township Three South, Range Thirteen West, (Lot) Lot numbered Thirty eight Township Four South, Range Twelve West, Lot numbered Thirty nine, Township Four South, Range Thirteen West, Lot numbered Thirty seven in Township Five South, Range Twelve West, and Lot numbered Forty, Township Five South, Range Thirteen West, San Bernardino Meridian.

In witness whereof I have hereunto  
signed my name and caused the Seal  
of the said Office to be affixed,  
at the City of San Francisco, this  
11th day of January, A. D. 1867.

L. Upson

U. S. Surveyor General