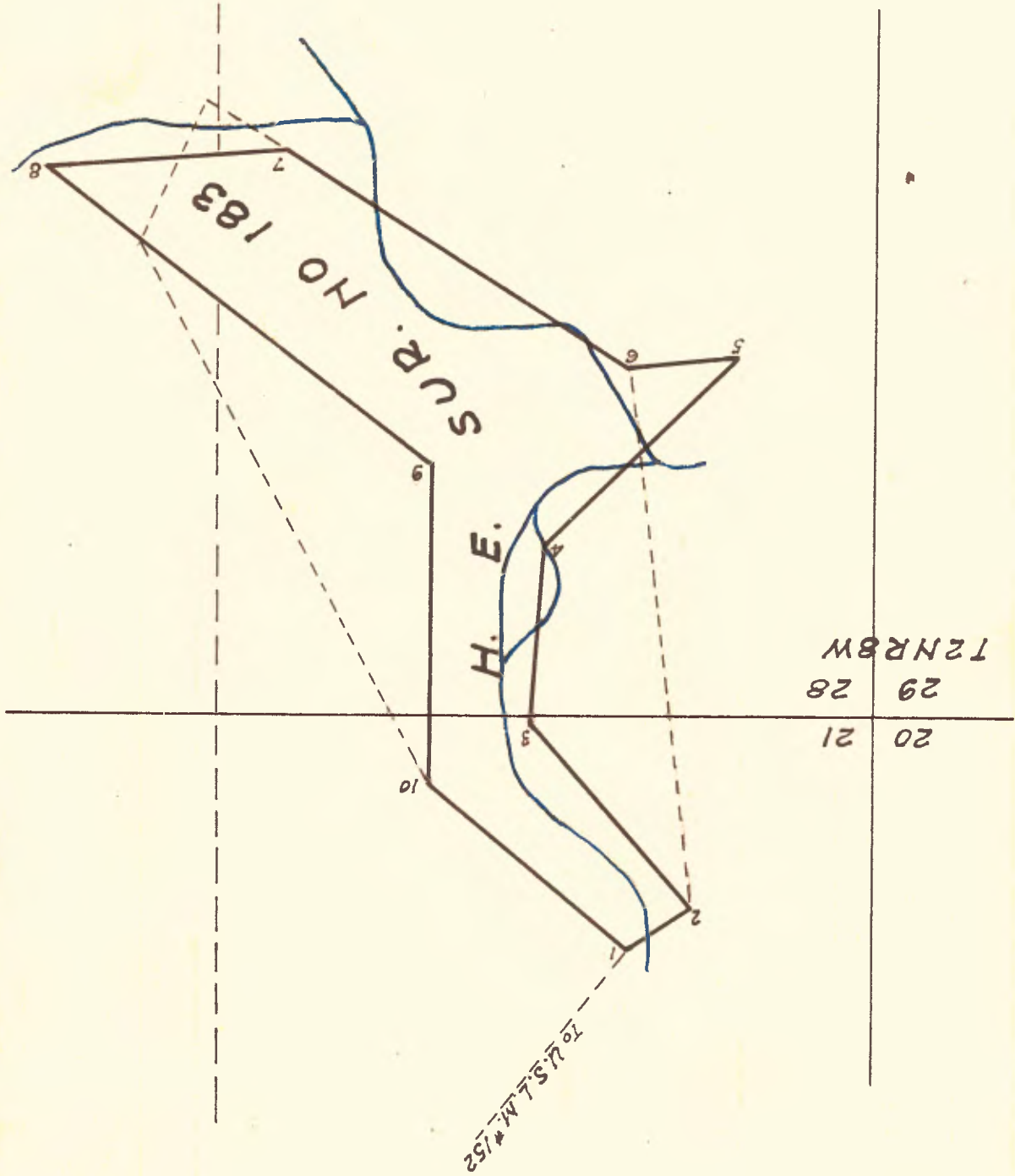


Surveyed by
Percy L. Day
Vol. 459-19:1-7

HOMESTEAD ENTRY No. 183

Surveyed by
D.W. McLaughlin
May - 1914



water creek in Sec. 15, T 2 N R 8 W S. B. W. in lot.
S.W. from the main ridge about 18 chains east of Cold-
This locating monument is set on a high spur, trending
point of Iron Mt. bears N. 62° 20' W. about 2 miles distant.
bears N. 82° 15' E. about 1 mile distant. The highest
N. 65° 35' E. about 3 miles distant. A high unnamed peak,
highest easterly peak of the San Antonio Mountains bears
471 W. 407 chains dist. marked U.S.L.M. 152 B.T. The
the stone, from which a spruce 16" in dia. bears S. 51°
and raise a mound of stone, 6 ft. base, 4 ft. high N. of
with a cross (x) on top and U.S.L.M. 152 on the N. face
granite stone 10" x 14" x 30", 15" in the ground marked
establish U.S. location monument #152 as follows: Set a
6 miles W. and 2 miles S. of this claim, I now proceed to
this township. The nearest known original corner being
believed that no corners have been or will be found in
idents, prospectors, surveyors and Forest Rangers, it is
during this search and from statements made by local res-
U.S.G.S. quad. covering this area. No corners were found
calls of the original field notes and by the use of the
the vicinity of this entry survey, based on topographic
5/2/14 was spent in search of a public land corner in
May 2, 1914. The time intervening between 4/28/14 and

H.E.S. #183 D.W. McLaughlin
0.36194

~~CONFIDENTIAL~~

~~CONFIDENTIAL~~

37°15'30" N. Long 117°43' W. Its position is not endangered by floods or landslides and it is visible miles in any direction. May 2, 1917. Survey Continued 3/24/15

It being necessary to connect U.S.L.M. #152 established by me on 5/2/14, in connection with unapproved H.E.S. #53 to the

nearest regular corner of the public land surveys. I again

make careful and diligent search for corner based on a tra-

verse the running from T 1 N R 9 W S.B.M. by Mr. Le Grand

Friel who also has made search in T 2 N R 8 W without success.

3/25/15 From this date to and including 3/27/15, diligent

search was made by Mr. Friel and myself and our assistants,

along and adjacent to Cattle Canyon, based upon the traverse

the heretofore mentioned and the Topographic calls of the

original field notes, but no evidences of any corner or bearing

3/28/15 trees were found. 3/27/15

I proceeded to the witness corner of Secs. 21, 22,

27 and 28 T 2 N R 9 W S.B.M. which is a mound of stone, 2' base

1 1/2' high from which a live oak 30" dia. marked as described by the

Surveyor Gen. bears N. 22° E. 25 links distant. At this cor-

ner I set off 37°14' on the lat. arc. and 2°46' on the decl. arc

and at 7 H 45 m A.M.L.M. determine a meridian with the solar.

From the true point for corner of Secs. 21, 22, 27 and 28 T 2 N

R 9 W S.B.M. I run a traverse to U.S.L.M. #152 as follows:

east 2.80 chains to said witness corner; thence

S. 81°35' E. 37.04 chains

N. 87°00' E. 32.03 chains

N. 88°57' E. 13.39 chains

at which point I set a flag. As the country to the North is extremely rough and broken and it being impracticable to carry this traverse up Coldwater Canyon, owing to the narrow, tortuous turns of the canyon and the dense growth therein,

S. 25°	20'	W.	15.06	chains
S. 80°	27'	E.	24.97	"
S. 78°	15'	E.	24.61	"
S. 80°	22'	E.	21.30	"
S. 69°	06'	E.	30.59	"
S. 89°	18'	E.	24.34	"
N. 71°	22'	E.	14.62	"
S. 73°	38'	E.	35.90	"
S. 48°	44'	E.	11.14	"
N. 67°	32'	E.	16.96	"
N. 56°	36'	E.	16.92	"
S. 78°	00'	E.	17.30	"
N. 69°	21'	E.	22.65	"
N. 73°	55'	E.	10.88	"
N. 19°	55'	E.	9.27	"
N. 33°	47'	E.	15.54	"
N. 65°	41'	E.	8.03	"
N. 66°	43'	E.	14.87	"
N. 52°	54'	E.	17.69	"
S. 39°	35'	E.	22.77	"
S. 57°	53'	E.	11.90	"
S. 74°	50'	E.	20.53	"

" to 1st corner #3 of H.E. Sur. #183

I proceed to triangulate between this station and U.S.L.M.

#152 as follows:

Selecting a long high ridge running nearly E. & W. about

midway between the objective points, I lay off a base line

N. 86° 00' E. 24.25 chains.

From Sta. 1 of which U.S.L.M. #152 bears N. 36° 11' E. flag

at traverse point bears S. 27° 33' W.

From Sta. 2 of base line U.S.L.M. #152 bears N. 22° 49' E.

Flag at traverse point bears S. 38° 47' W.

$$\begin{aligned} \text{Base } 24.25 \times \frac{\sin 14^\circ 14'}{\sin 27.25} \times \frac{\sin 47^\circ 13'}{\sin 27.25} &= \frac{.24587}{\sin} \times \frac{.73393}{\sin} = 72.39 \text{ chains} \\ \text{Base } 24.25 \times \frac{\sin 13^\circ 22'}{\sin 27.25} \times \frac{\sin 116^\circ 49'}{\sin 27.25} &= \frac{.23118}{\sin} \times \frac{.89245}{\sin} = 93.61 \text{ chains} \end{aligned}$$

The bearing and dist. of U.S.L.M. #152 from the true point for

cor. of secs. 21, 22, 27 and 28 T 2 N R 9 W. as determined by

this traverse and triangulation is N. 76° 12' E. 524.71 chains.

3/30/15.

3/31/15 Based upon my traverse from the true point for cor. of

secs. 21, 22, 27 and 28 T 2 N R 9 W, I again make search for

public land corners and their bearings, but am unable to find

any evidence of same. The topographic calls of the original

survey if applied on the ground differs in position from the

traverse of the U.S.G.S. Sheets by about 40 chains N & S 20

chains E & W. Large witness trees called for on bare ridges

where trees never grew, according to statements of old resi-

dents and evidence on the ground, hence I am convinced that

further search is useless. 4/1/15.

4/1/15 Commencing at the corner #1 identical with 1st corner #1 which is a lime rock cliff on the east bank of Coldwater Creek, marked and witnessed as described by the Forest Service, I destroy all trace of the old markings and mark the same point with a cross (x) and 1 H.E.S. 183 on the S.W. face for cor. #1 of this survey and raise a mound of stone 2 ft. base 1 1/2 ft. high S.W. 3 1/2 ft. dist. from which a live oak 27" dia. bears N. 79°45' W. 135 links, dist. marked 1 H.E.S. 183 B.T. No other suitable bearings available U.S.L.M. #152, heretofore described, bears N. 38°38' E. 136.72 chains by traverse and triangulation. At cor. #1 above described, in lat. 34°14' N. long 117° 43'30" W. as obtained from information furnished by the Surveyor General at 1 h 10 m P.M. 1.m.t. I set off 34°14' on the 1st arc; 5°32' N. on the decl. arc and determine a meridian with the solar the mag. decl. of the true meridian at 1 h 15 m. P.M. is N. 15° 45' W which equals 15°50' E.

Chs. Thence I run S. 58°45' W. desc. enter Coldwater Creek 10 lks. wide course S. 60° W. Leave same, course S. 25° W. 2.00 trail to San Dimas, bears N. 45° E. and S. 45° W. asc. steep slope

4.88 to cor. #2 identical with 1st cor. #2, which is limestone cliff, marked as described by the Forest Service. I destroy all trace of the old markings and mark this same cliff with a cross (x) at the true point for cor. and 2 H.E.S. 183 on the S.E. face for cor. #2 of this survey and raise a mound

0.25 10 lks. wide course S. 60° W

1.95 Leave same, course S. 25° W

2.00 trail to San Dimas, bears N. 45° E. and S. 45° W.

of stone, 2 ft. base 1 1/2 ft. high
 S.W. 3 1/2 ft. distant from the cor. from which an
 elder 14" dia. bears S. 87° 15' E. 130 lks. dist. marked
 2 H.E.S. 183 B.T.
 A sycamore 12" dia. bears S. 10° 42' E. 235 lks. dist.
 mark 2 H.E.S. 183 B.T.
 From cor. #2 I leave the lines of list 5-2180, in
 order to exclude undesirable non-agricultural land and
 run S 71° 19' E. desc. steep slope.
 Trail to San Dimas, bears N.E. and S.W.
 Same trail bears N.W. and S.E. asc., spur in chaparral
 Top of spur bears N.E. desc. along steep, rock cliffs.
 6.25
 Top of spur bears N.E. desc. along steep, rock cliffs.
 5.00
 To cor. #3, set a granite stone 4 x 10 x 22 in., 14"
 in ground for cor. #3 of this survey, marked 3 H.E.S.
 183 on the east face, and raised a mound of stone 2 1/2'
 base 1 1/2 ft. high, E. 3 1/2 ft. dist. from the cor. from
 which a live oak tree 12" dia. bears N. 53° 30' E. 40
 lks. dist. marked 3 H.E.S. 183 B.T. No other bearings
 available.
 4/5/15
 At 8 - 15 A.M. 1.m.t. I set off 34° 14' on the lat. arc
 and 5° 51' N. on the decl. arc and determine a meridian
 at cor. #3 of this survey. Thence I run S. 5° 00' W.
 descend steep S. slope.
 2.70
 asc. spur bears E.
 4.10
 Top of same, desc.

5.90 cross branch of Coldwater Creek 10 lks. wide, course S.W. and asc.

10.80 cross same stream 10 lks. wide, course S.E.

11.00 To cor. #4 set a granite stone 5" x 8" x 22", 14" in the ground for cor. #4 of this survey, marked 4 H.E.S. 183 on the S.E. face and raise a mound of stone 2 ft. base 1 1/2 ft. high, S.W. 3/4 ft. dist. from the cor. from which an elder 20" dia. bears S. 89°10' E. 60 lks dist. marked 4 H.E.S. 183 B.T. A mycamore 14" dia. bears S. 20°30' E. 90 lks. dist. marked 4 H.E.S. 183 B.T. Thence I run S. 47°13' W. desc. along E. base of rocky cliffs. cross Coldwater Creek 10 lks. wide, course S. 75° W. 6.50 cross Cattle Creek, 15 lks. wide, course N. 25° W. asc. 7.75 across rocky bed of Cattle Canyon. At this point I leave the lines of the list 5-21-80, in order to include desirable agricultural land.

15.13 asc. S. bank of Cattle Canyon course S.W.

15.38 To cor. #5, set a granite stone 5 x 10 x 22 ins., 14 ins. in the ground for cor. #5 of this survey, marked 5 H.E.S. 183 on the N.E. face and raise a mound of stone 2 ft. base, 1 1/2 ft. high N.E. 3/4 ft. dist. from the cor. from which a live oak 14" dia. bears N. 51°00' E. 170 lks. dist. marked 5 H.E.S. 183 B.T. The S.W. cor. of the entryman's cabin bears N. 72°00' E. 120 lks dist.

No other bearings available.

Thence I run N. 84°04' E. asc.

0.75 Trail to San Dimas, bears N. 30° E. and S. and 30° W.

chs.
6.49

To cor. #6 identical with cor. #3 of list 5-2180 which

is a lime stone ledge marked and witnessed as described by the Forest Service. I destroy these markings. As

this ledge is unsuitable for the cor. I set a granite

stone 6 x 10 x 20 ins., 14 ins. in the ground for cor.

#6 of this survey, marked 6 H.E.S. 183 on the N. face,

and raise a mound of stone, 2 ft. base, 1 1/2 ft. high,

N. 3 1/2 ft. dist. from the cor. from which a manzanita

8 in. dia. bears N. 23° 42' W. 11 lks. dist. marked 6

H.E.S. 183 B.T.

No other bearings available.

This cor. is located on the summit of a short narrow

ridge, bearing N. 30° E. and E. 30° W.

Thence I run S. 56° 32' E., descending abruptly.

Enter rocky bottom of canyon, bears N. 35° W. and S.

35° E. and asc. along S. side of same.

Cross Cattle Creek, 12 lks. wide, course N.

25.84

to cor. #7. Set a granite stone 6 x 8 x 24 ins., 14 ins.

in the ground for cor. #7 of this survey, marked 7 H.E.S.

183 on N. face, and raise a mound of stone, 2 ft. base

1 1/2 ft. high, N. 3 1/2 ft. dist. from the cor. from which a

live oak 8" dia. bears S. 84° 47' W. 9 lks dist. marked

7 H.E.S. 183 B.T.

A live oak 8" dia. bears N. 62° 13' W. 45 lks. dist. marked

H.E.S. 183 B.T.

The S.W. cor. of entryman's cabin bears N. 17° 45' E. 40

lks. dist.

chs. At this cor. I set off 5°54' N. on the dec. arc, and at

12 h. 03 m. 02 s P.M. l.m.t. observe the sun on the merid-

ian, the resulting latitude is 34°14'. List Cor. #4

which is an oak 8 ins. dia., marked and witnessed as

described by the Forest Service, bears N. 56° 32' E.

5.72 chains. This listing cor. I destroy. From Cor. #7

above described, I leave the line of list 5-2180, in

order to exclude undesirable non-agricultural land and run

N. 86°45' E. sec. along N. bank of Cattle Canyon through

dense chaparral.

6.13 At this point I leave the lines of list 5-2180, in order

to include, additional agricultural land.

14.28 To cor. #8, set a granite stone 7 x 10 x 20 in., 14 ins.

in the ground for Cor. #8 of this survey, marked H.E.S.

183 on the W. face and raise a mound of stone 2 ft. base

1 1/2 ft. high, W 3 1/2 ft. dist. from the cor. from which a

live oak 8 ins. dia. bears S. 78° 10' W. 55 lks. dist.

marked 8 H.E.S. 183 B.T.

A live oak 14 in. dia. bears N. 45°20' W. 29 lks. dist.

marked 8 H.E.S. 183 B.T.

Thence I run N. 52°26' W. sec. sloping bench.

7.68 Intersect Cor. #5 of list 5-2180, which is an oak stake

4 in. square, 2 ft. above ground, properly marked.

The listing corner I destroy. In order to exclude un-

desirable non-agricultural land I continue on the same

course, leaving the lines of list 5-2180.

chs.

7.75 Top of low ridge, bears N. 40° E and S 40° W desc.

15.50 Asc. spur, bears N.E. and S.W.

29.99 To cor. #9. Set a granite stone 6 x 8 x 24 ins., 14 ins. in the ground, for cor. #9 of this survey, marked 9 H.E.S. 183 on the S.W. face and raise a mound of stone 2 ft. base 1 1/2 ft. high. S.W. 3 1/2 ft. dist. from the cor. No bearing objects available, This cor. is on top of a spur which bears N.W. Thence I run N. 1° 02' E. asc. along W. face of steep brushy slope.

19.23 To cor. #10 identical with 1st cor. #6 which is a limestone cliff, marked and witnessed as described by the Forest Service. As this point is unsuitable for the cor., owing to decomposition, I set a granite stone 4 x 8 x 20 ins., 14 ins. in the ground, for cor. #10 of this survey, marked 10 H.E.S. 183 on the S.W. face and raise a mound of stone 2 ft. base, 1 1/2 ft. high S.W. 3 1/2 ft. dist. from the cor. No bearing objects available. The S.E. corner of entryman's house bears S. 72° 07' W. 4.00 chs. dist. 4/5/15 Thence. I run No. 49° 54' W. desc. over rolling ridges and ravines through dense chaparral.

3.00 Ravine 5 lks wide course S.W. and asc.

4.50 Top of low spur, bears S.W. desc.

16.23 To cor. #1, the pt. of beg.

Area of H.E.S. #183

Area of list #5-2180
 Area of additional Tracts
 Total area of H.E.S. #183

51.64 acres
3.60
 55.24

Course Dist. N. S. E. W.

S. 58° 45' W	4.88		2.53		4.17
S. 41° 19' E	15.10		11.34	9.97	
S. 5° 00' W	11.00		10.96		0.96
S. 47° 13' W	15.38		10.45		11.29
N. 84° 04' E	6.49	0.67		6.46	
S. 56° 32' E	25.84		14.25		
N. 86° 45' E	14.28	0.81		14.26	
N. 52° 26' W	29.99	18.28			23.77
N. 1° 02' E	19.23	19.23		0.35	
N. 49° 54' W	16.23	10.45			12.41

158.42 49.44 49.53 52.60 52.60 Error in depart. .00

Error in closure..

158.42

= 1:1760 v-0921 002