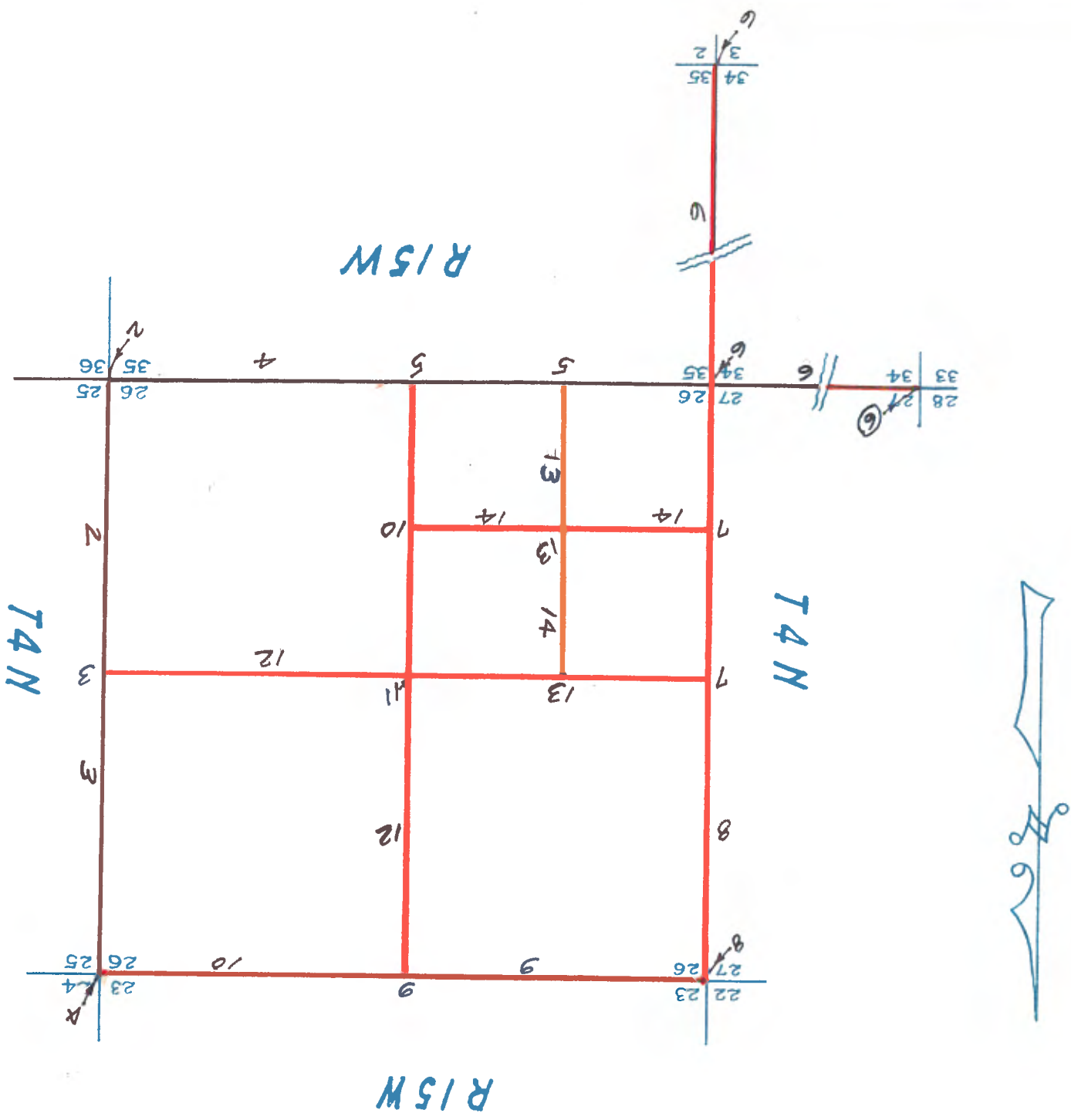


SECTION 26 T4NR15W

DEPENDENT RESURVEY OF

FIELD NOTES OF A

Copied from photostatic copies furnished by the U.S. Bureau of Land Management-San Francisco.



The bearings of all lines of the survey were checked by sustained angulation from this reference line.

True bearing to reference mark	S. 89° 47' 50" W.
Horizontal angle, sun to target	52° 28' 30"
Azimuth of sun at mean period	S. 37° 19' 20" W.
Declination of the sun	22° 59' 40"
True Vertical Angle	22° 27' 50"

Dec. 11, 1947, at the corner of sec. 25, 26, 35 and 36, at 2h. 26m. p.m., standard time, make a series of four altitude observations upon the sun, each with the telescope in direct and reversed positions, observing opposite limbs of the sun, and reading the horizontal angle from the line of sight to a flag target 100 chains west;

Latitude, 34° 28' 20" N., Longitude, 118° 25' W.

The geographic position of the SE. corner of section 26 is given as follows:

Preliminary to resurvey the lines of the governing survey are retraced, and the data thoroughly verified. The true line results are given herein.

The direction of all lines were determined by altitude observations upon the sun for azimuth, supplemented by solar unit observations. Measurements were made with a Tallie steel tape, 5 chs. in length, graduated every link for the first 100 links, and the balance at intervals of 10 links. The tape was first tested by comparison with a Luikin standard and found correct. The measurements were made on the slope; the vertical angle of each interval was also obtained by forward and rear alidade readings. The horizontal equivalent only are entered in the field note record.

The instrument specifications of the Bureau of Land Management, Serial No. 21849, constructed in accordance with the standard, the survey was executed with Bull & Bull solar transit, having been tested and found free from appreciable error.

The dependent resurvey of the boundaries of section 26, and a limited subdivision of the section, was executed to provide a basis for small tract disposal in the NW 1/4 SW 1/4 of said sec. 26, under Act of June 1, 1938 (52 Stat. 609; 43 U.S.C. 682a).

Resurveys executed by Los Angeles County in 1925 effected a re-orientation of original corners, then extent, with brass capped iron posts, 2 in. diam., firmly embedded in a concrete base. With only slight modification of the marks, and the addition of suitable references, these monuments are adopted as properly defining the original survey.

In 1855 H. Hancock surveyed an offset line through T. 4 N., R. 15 W., establishing a portion of the 2nd. latitudinal section line. The subdivision of the township was completed by W. H. Norway in 1876.

T. 4 N., R. 15 W.

Dependent resurvey of part of the subdivision, T.4N., R.15 W.

Chains

The cor. of sec. 25, 26, 35 and 36, is marked by an iron post, 2 in. diam., firmly set in concrete base, 6 in. diam., 5 in. below surfaced highway. Additionally mark brass cap to read

COUNTY SURVEYORS
T4N
R15W
S 26 | S 25
S 35 | S 36
US BLM 1947
MONUMENT

An iron post, 3 ft. long, 1 in. diam., set 36 ins. in the ground, for a reference monument, bears S.45°E., 64.3 lks. dist., with brass cap mkd. T4N R15W S 36 1947 and an arrow pointing to the corner.

An iron post, 3 ft. long, 1 in. diam., set 36 ins. in the ground, for a reference monument, bears N.45°W., 64.3 lks. dist., with brass cap mkd. T4N R15W S 26 1947 and an arrow pointing to the corner.

From the corner:

The north pole of twin like oak, 12 in. diam., bears N.71½°E., 71 lks. dist.; old gear of disk on this tree presents probable evidence of site of original bearing tree (record: N.75°E., 75 lks. dist.)

Corner of three strand barbed wire fencing, extending N., S. and E., bears S.88½°E., 32 lks. dist.

A drilled well, and windmill, bears N.56°E., 56½ lks. dist.,

Pole No. 107-48, of telephone line paralleling highway, bears S.26°E., 89½ lks. dist.

Pole, of three wire, electric power line, extending N and S., bears S.86°W., 29 lks. dist.,

Center line of oil surfaced highway, bears N., and S.6½°E.,

N.0°19'W., bet. sec. 25 and 26.

Along surfaced roadway, over bottom land, in Sand Canyon.

9.60

Road, curves to NW.,

10.20

Telephone line, parallels road. Leave bottom land; asc. 25 ft. over SW. slope.

11.70

Top of ascent; shoulder of low spur, extending from SE. Desc. 30 ft. over N. slope, through moderately dense undergrowth.

17.60

Drain, course W. Asc. 10 ft. over S. slope.

22.60

Flat spur, extends NW. Desc. 30 ft. over N. slope.

26.60

Leave undergrowth; enter cleared land, bearing E. and W.

27.50

Drain, course NW.

31.85

Wire fencing, bears E. and SW.

Dependent Resurvey of Part of the Subdivision, T.4N., R.15 W.

32.00	Ranch road, bears E. and SW. Asc. 45 ft. over gradually increasing SW. slope.
32.30	Wire fence, bears E. and W., enclosing vineyard.
39.10	Leave vineyard; fence bears irregularly to W., and to E., about 1 chain, thence to South. Enter scattered undergrowth, in low foothills.
39.98	The 2 nd sec. cor., marked by an iron post, 2 ins. diam., 4 ins. above ground, firmly set in concrete base, 6 ins. diam. Additionally mark brass cap to read
COUNTY SURVEYOR T.4N. 1/2 S 26 1/2 S 25 R15 W 1/2 SEC COR US BLM 1947 MONUMENT	
	Have a mound of stone, 3 ft. base, 1 1/2 ft. high, W. of corner,
	Barbed wire fence, now in dilapidated condition, bears E. and W. from corner.
	N. 0° 11' W., beginning new measurement.
	Asc. 25 ft. over SW slope.
0.14	Telephone line, bears E. and W.
4.00	Top of ascent, spur, extends to the West. Desc. 65 ft. over N. slope, through dense undergrowth.
8.00	Gully, course NE. Old wire fence, here dilapidated and fallen, extends to the north. Asc. 70 ft. over SE slope.
10.40	Top of ascent, on E. slope; three strand, barbed wire fence, here in good condition, bears N. and S.
	Desc. 40 ft. over NE. slope.
14.80	Small spur, extends to NE. Desc. NW. slope 90 ft.
25.50	Foot of slope, bearing NE. and SW.; leave undergrowth, enter scattered oak timber.
28.50	End of fence, from the S.
28.70	Road, bears NW. and SE.
29.00	Three strand wire fence, bears NW. and SE.
32.15	Roadway, bears E. and W.
32.25	Wire fence, bears E., N. and W.
36.20	Drain, 10 lks. wide, 1 ft. deep, course NW. Asc. 20 ft. over S. slope.
38.50	Small spur, extends W., Desc. 25 ft. over N. slope.
39.80	The cor. of sec. 23, 24, 25 and 26, marked by an iron post, 2 ins. diam., 6 ins. above ground, firmly set in concrete base, 6 ins. diam., Additionally mark brass cap to read

Chain

COUNTY SURVEYORS
 74N
 S 23 | S 24
 R15W
 S 26 | S 25
 US BLM 1947
 MONUMENT

Bury a Granite stone, 7 x 6 x 5 ins., marked + along-
 side iron post.
 Three strand, barbed wire fencing extends S. E. and N.
 from corner.
 Corner is situated on S. side of roadway leading E. to
 Box Circle Ranch.
 Land, valley bottom, and low foothills.
 Soil, sandy gravel, 2nd. rate.
 Scattered oak trees in valley land; mesquite brush and
 chaparral on hillides.

From the cor. of secs. 25, 26, 35 and 36.
 S. 89° 45' W., bet. secs. 26 and 35.

Over bottom land, through scattered oak timber; across
 surfaced highway, bearing N. and S. 67° E.

0.20 Leave highway; enter open field.
 2.23 Three strand barbed wire fencing, bears N. 46° W. and S. 46° E.
 3.00 Wash, 50 lks. wide, 4 ft. deep, course N. 60° W.

6.00 Drain, 10 lks. wide, 1 ft. deep, course N.
 12.79 Five strand wire fencing, bears N. and S.; leave field.

15.87 Woven mesh, flood control fencing, on E. side of wash
 channel, bearing N. 3° E.

16.30 West bank of wash, 3 ft. high.
 19.95 Five strand wire fencing, from south, extends N. 30 lks.
 instant to corner, thence to E. and to N.

22.80 Wash, 10 lks. wide, 3 ft. deep, course N. 10° W. Leave
 bottom land; sec. 7 ft.

24.20 N. slope of low spur, from S.; desc. 7 ft. over slight NW
 slope.
 25.50 Shallow cove, drains N.; sec. 10 ft.
 27.00 point of spur, sloping N.; desc. 15 ft.

28.83 Wire fencing, extending N. and W., bears N. about 50 lks.
 dist; Leave oak timber; across open field sec. 30 ft.
 over slight NE slope.
 40.05 Three strand wire fencing, in dilapidated condition, bears
 N. and S. Leave field.

Dependent Survey of Part of the Subdivision, T. 4 N., R. 15 W.

Chains

The $\frac{1}{2}$ sec. cor., marked by a wooden hub, 2 ins. square, driven firmly in the ground in center of a small and dilapidated mound of stone.

At the corner point

Set an iron post, 3 ft. long, 1 in. diam., $\frac{3}{4}$ in. in the ground, with brass cap mkd.

$\frac{1}{2}$ s 26
4 s 35
1947

Bury a Granite stone, 6 x 6 x 5 ins., marked + along-side iron post.

Raise a mound of stone, 3 ft. base, 2 ft. high, N. of cor.

From the corner

E. end of a dilapidated wire fence, from the W., bears N.15°E., 15 lks. dist.

Corner of three strand barbed wire fencing, extending to E. and S., bears N.2°E., 58 lks. dist.

S.89°51'W., beginning new measurement.

Asc. 60 ft. over E. slope, through increasingly heavy undergrowth along dilapidated wire fencing, extending W. Shoulder of flat spur, from S., breaks to NE. and to NW. End of fallen wire fencing, from E.

Desc. 15 ft. over a decreasing W. slope.

Stub roadway, leads irregularly to the S.

Wash, 10 lks. wide, 2 ft. deep, course N. Asc. 70 ft. over E. slope.

Shoulder of spur, from S., Desc. 70 ft. over SW. slope.

Foot of slope; wash, drains N. Over flat, washed land.

Point for W. 1/16 sec. cor.,

Set an iron post, 3 ft. long, 1 in. diam., $\frac{3}{4}$ in. in the ground, with brass cap mkd.

1 s 26
 $\frac{1}{2}$ s 35
1947

Bury a Granite stone, 8 x 8 x 6 ins. marked + along-side iron post.

Raise a mound of stone, 3 ft. base, $1\frac{1}{2}$ ft. high, N. of cor.

Asc. Gradual, flat NE. slope, through dense chaparral.

Unimproved roadway, bears N. 60°E. and S=60°W.

Gully, 1 ch. wide, 15 ft. deep, course N.20°E.

Gully, 50 lks. wide, 10 ft. deep, course N.70°E., at foot of hills.

Dependent Resurvey of Part of the Subdivision, T.4 N., R.15 W.

Chains

39.74

Avg. 50 ft. over changing, SE. to S. slope.

The cor. of sec. 26, 27, 34 and 35, marked by an iron capped pipe, 2 ins. diam., firmly set, 14 ins. above ground, in center of a disappiated mound of stone.

At the corner point

Set an iron post, 3 ft. long, 2 ins. diam., 35 ins. in the ground, with iron pipe deposited alongside, with brass cap mkd.

14N	R15W
S 27	S 26
S 34	S 35
1947	

Bury a granite stone, 7 x 6 x 6 ins., marked + alongside iron post.

Raise a mound of stone, 3 ft. base, 2 ft. high, W. of cor.

Corner is situated on steep S. slope, E of, and closely adjacent to, short ravine, draining SE.

From the corner

The cor. of sec. 27, 28, 33 and 34, marked by an iron capped pipe, 2 ins. diam., firmly set, 8 ins. above ground, and in a small mound of stone, bears S. 89° 27' W. 78.98 chs. dist.; iron cap is marked

S 28	S 27
14N	R15W
SBM	
S 33	S 34

From the same corner

The cor. of sec. 2, 3, 34 and 35, on the S. bdy of the Tp., bears S. 5° 53' E., 76.82 chs. dist., marked by a County Survey monument; a brass capped iron post, 2 ins. diam., firmly embedded in concrete base, 6 ins. diam., flush with surface of ground. South of, and adjacent to this monument is an iron capped pipe, unmarked, 2 ins. diam., firmly set, 8 ins. above ground.

Raise a mound of stone, 2 ft. base, 1 1/2 ft. high, W. of cor.

This monument is situated on a rolling shelf, or bench at base of steep SW. slope; was slightly covered by a light detrital overlay.

Land, valley bottom in E. portion, slightly broken in W. soil, sandy to rocky clay, 2nd. and 3rd. rate. Scattered oak trees in valley; creosote and chaparral in W. half.

1947

S 27 S 26

7/4

Set an iron post, 3 ft. long, 1 in. diam., 3/4 ins. in the ground, with brass cap mkd.

At the corner point

This monument has been locally recognized as the 3/4 sec. cor. and so utilized in the delineation of private properties in Sand Canyon Valley.

The 3/4 sec. cor., marked by a redwood post, 4 ins. square, 12 ins. above ground, firmly set in small mound of stone, mkd. 7/4 on W. face. Alongside is an iron pipe, 16 ins. long, driven in the ground to a depth of 12 ins.

39.56

Sharp, narrow spur, slopes NW. Desc. 95 ft. over a decreasing N. to NW. slope.

37.00

Head of wide draw, course NW. Asc. 50 ft. over SW. slope.

34.50

Change of slope to N.; desc. 155 ft.

30.50

Narrow ridge bears NE. and SW. Desc. 90 ft. over an increasing NW. slope.

24.40

Raise a mound of stone, 2 ft. base, 1 1/4 ft. high, W. of cor. Drain, 5 lks. wide, 2 ft. deep, course SE. Asc. 120 ft. over S. slope.

20.20

Bury a Granite stone, 6 x 4 x 4 ins., marked + alongside iron post.

S 27 S 26
1947

S 7/6

Set an iron post, 3 ft. long, 1 in. diam., 3/4 ins. in the ground, with brass cap mkd.

19.78

Point for S. 1/16 sec. cor.

Along rolling E. slope.

Wash, draining E; leave dense undergrowth, enter old burn now covered with light growth of sage and buckwheat.

14.00

Spur, slopes S. 70° E. Desc. 30 ft. over NE. slope.

11.70

Wash, 20 lks. wide, course S. 70° E. Asc. 70 ft. over SW. slope.

7.40

Wash, 15 lks. wide, in shallow draw, course E.

5.70

Sharp spur, slopes E. Desc. 70 ft. over decreasing NE. slope.

2.40

Asc. 80 ft. over S. slope, through dense undergrowth.

N. 0° 07' E., bet. secs. 26 and 27.

Chains

Dependent Resurvey of Part of the Subdivision, T. 4N., R. 15W.

6.50 Local stub road, bears N₆₀ and curving to S₆₀, in sharp grade. Change of slope to W₆₀, continue ascent.

3.00 Change of slope to SW₆₀; asc. 140 ft.

Along S₆₀ slope of small spur, bearing W₆₀, through moderate undergrowth.

N. 89° 37' E., bet. sees. 23 and 26.

Land, broken hills. Soil, rocky, 3rd rate. Scattered sage, buckwheat, creosote brush; dense patches of chaparral.

Raise a mound of stone, 3 ft. base, 2 ft. high, W of cor.

COUNTY SURVEYORS
T. H. N
S 22 S 23
R15W
S 27 S 26
US BLM 1947
MONUMENT

39.98 The cor. of sec. 22, 23, 26 and 27, marked by an iron post, 2 ins. diam., firmly set in concrete base, 6 ins. diam., 6 ins. above ground, and in a flat mound of stone to top. Additionally mark brass cap to read

36.20 Shallow draw, course W₆₀. Asc. 27 ft. over S₆₀ slope, through scattered undergrowth.

28.00 Small spur, slopes W₆₀. Desc. 80 ft. over N₆₀ slope.

25.00 Ravine, course N. 70° W.; over W₆₀ slope.

22.50 Point of spur, from SE.; desc. 15 ft.

21.50 Small ravine, course NW₆₀; desc. slightly, over W₆₀ slope.

Desc. 130 ft. over a decreasing N₆₀ slope.

15.25 Sharp spur, bears N. 70° W.; a granite stone, 12 x 10 x 10 ins., supported in a mound of stone, marked + on top; T on W. face, bears W₆₀; 1 lk. dist.

8.10 Ravine, course N. 85° W. Asc. 90 ft. over S₆₀ and SW₆₀ slope. Desc. 85 ft. over NW₆₀ slope.

3.70 Spur, slopes W₆₀. Enter dense undergrowth, bearing E₆₀ and W₆₀.

1.10 Head of ravine, course NW₆₀. Asc. 85 ft. over S₆₀ slope.

Desc. 40 ft. over NW₆₀ slope, through light undergrowth.

N. 0° 03' E., beginning new measurement.

Raise a mound of stone, 3 ft. base, 2 ft. high, W of cor.

Bury a granite stone, 6 x 5 x 4 marked +, and the post, and iron pipe, alongside iron post.

Chains

Dependent Resurvey of Part of the Subdivision, T. 4 N., R. 15 W.

Chains	
9.00	Change of slope to SW.; continue gradual ascent, near top of spur, from E.
12.50	Swale, in low ridge bearing N. and S. Desc. 80 ft. over SE. slope.
19.80	Corner of three strand barbed wire fencing, in dilapidated condition, bearing irregularly to E. and S., bears South, 1 km. dist.
19.98	An iron pipe, 2 ins. diam., 2 ft. above ground, firmly set, and in a scattered mound of stone, bears North, 1 km. dist.
23.50	Continue along S. slope, through scattered undergrowth. Change of slope to SE.; desc. 70 ft.
27.00	Enter cultivated field, bearing NE. and SW. Desc. very slightly, over plowed land.
39.44	North end post of barbed wire fencing, from the south, bears South, 1 km. dist. Enter lane, from E., leading to S. The $\frac{1}{2}$ sec. cor., marked by an iron post, 2 ins. diam., firmly set in concrete base, 6 ins. diam., 9 ins. below surface of roadway. Additionally mark brass cap to read
County Surveyors T. J. N. S 23 R15 W $\frac{1}{2}$ S 26 $\frac{1}{2}$ SEC COR US BLM 1947 MONUMENT	
39.62	From which
	A live oak, 30 ins. diam., bears N. 36 $\frac{1}{2}$ W., 61 lks. dist., marked RT.
	A live oak, 32 ins. diam., bears S. 47 $\frac{1}{2}$ W., 87 lks. dist., marked RT.
	Wooden pole, No. 461934E, of three wire electric power line, extending from the East, bears N. 88-3/4 $\frac{1}{2}$ E., 110 lks. dist.
	West end post of barbed wire fencing, extending from the East, bears S. 86 $\frac{1}{2}$ $\frac{1}{2}$ E., 51 lks. dist.
	Corner of barbed wire fencing, extending to E. and N., bears N. 4 $\frac{1}{2}$ E., 37 lks. dist.
	N. 89 $\frac{3}{8}$ E., beginning new measurement.
	Over valley land, along S. side of roadway, known as Stanley Lane.
5.60	Flat wash, 1 ch. wide, course N.
15.90	Power line, three wires on wood poles, bears N. and S.
16.25	Sand Canyon highway, oil surfaced, bears N. and S., End of Stanley Lane, an unpaved roadway, extending to the west

Dependent Resurvey of Part of the Subdivision, T. 4N., R. 15 W.

Dependent Resurvey of part of the Subdivision, T.4 N., R.15 W.

chains

19.00 Top of ascent; across S. slope of low, flat hill.
 21.70 Connecting spur, from shallow waste to SE., bears NW. desc. 50 ft. over NE. slope.
 27.50 Leave undergrowth; enter scattered oak timber; continue slight descent.
 31.25 Old surfaced road, bears S. 30° E. and N. 50° W. Continue along S. side of stub roadway, leading east, to box circle Ranch; across narrow valley.
 37.50 Wash, 15 lks. wide, 4 ft. deep, course N. 15° W. Asc. 10 ft. along N. slope at foot of low spur, from E., and along S. side of roadway, in margin of undergrowth.
 37.60 Electric power line, three wires on wood poles, bears N. & S. The cor. of secs. 23, 24, 25 and 26.
 39.66 Land broken hills W., valley land in E. Soil, sandy gravel, 2nd. rate; rocky in hilly portions. Chaparral and creosote brush in hills; scattered oak trees in the valley.

Subdivision of Section 26, T.4 N., R.15 W.

From the $\frac{1}{2}$ sec. cor. of secs. 26 and 35.
 North, on the N. and S. center line of Sec. 26.
 Over slightly rolling, open valley land. Asc. 20 ft. over SE slope.
 2.00 Flat gravel spur, extends NE. Desc. 15 ft. over NW. slope.
 5.00 Change of slope to NE.; desc. 50 ft.
 12.80 Drain, 5 lks. wide, 2 ft. deep, course NE.
 19.77 Three strand barbed wire fencing, from N., extends to SW.
 19.85 Enter wash, 20 lks. wide, 2 ft. deep, course NE.
 19.91 Point for center S. 1/16 sec. cor.
 Set an iron post, 3 ft. long, 1 in. diam., 3 1/4 ins. in the ground, with brass cap mrd.
 S $\frac{1}{16}$ | S 26
 0
 1947
 Bury a granite stone, 6 x 6 x 5 ins., marked + alongside iron post.

Subdivision of Section 26, T.4 N., R.15 W.

Chains Raise a mound of stone 3 ft. base, 1 ft. high, W. of cor.

From the corner

A live oak, 18 ins. diam., bears N.1-3/4°E., 147 lks. dist., mkd. BT

A live oak, 20 ins. diam., bears S.79°W., 51 lks. dist., mkd. BT

A live oak, 20 ins. diam., bears S.79°W., 51 lks. dist., mkd. BT

20.10

Leave wash desc. 10 ft., over nearly level land, along side of wire fencing, extending Northward in east margin of roadway, bearing slightly to W. of North.

24.60

Drain, 6 lks. wide, 2 ft. deep, course S.75°E.

30.00

Leave bottom land; asc. 25 ft. over S. slope.

35.50

Low knoll, bearing E. and W., the terminus of small spur from SW. Desc. 45 ft. over NW. slope, through small cluster of live oak trees.

39.82

Point for center 1/2 sec. cor., at intersection with the E. and W. center line. This point has been marked, under local survey, by an iron pipe, 1 in. diam., 16 ins. long, driven flush with the surface of the ground. Another survey point, marked by an iron pipe, 2 ins. diam., driven flush with the ground surface, bears East, 4 lks. distant.

At the corner point

Set an iron post, 3 ft. long, 1 in. diam., 48 ins. in the ground, with a granite stone 5 x 4 x 4 ins., marked +, and the iron pipe, buried alongside, with brass cap mkd.

0 1/4's 26

1947

From which

An iron post, 3 ft. long, 1 in. diam., set 3 1/4 ins. in the ground, for a reference monument, bears North, 45 lks. dist., with brass cap mkd. C 1/2 S26 Nm 1947, and an arrow pointing to the cor.

An iron post, 3 ft. long, 1 in. diam., set 3 1/4 ins. in the ground, for a reference monument, bears South, 45 lks. dist., with brass cap mkd. C 1/2 S26 Nm 1947, and an arrow pointing to the cor.

Corner is situated in center of lane, or fenced roadway, from the East, here turning to SW., and in line of wire fencing extending to N. and S.; a loose strand wire gate closes the roadway at this point.

North, beginning new measurement.

Over plowed land, sloping gently to NE., and alongside wire fencing; desc. 15 ft.

Wire fencing, extends W., from N. and S. fencing, East, 6 lks. dist. Leave plowed land; asc. 10 ft.

11.54

Chains
 12.70 Low knoll, bears E. and W. across swale, draining E.
 18.00 Low spur, extends to NE. Desc. 30 ft. over N. slope.
 19.35 Corner of wire fencing bears East, 6 lks. dist.; fencing extends to N. S. and W. Enter pasture land.
 19.945 Point for center N. 1/16 sec. cor.
 A residence bears S. 60° E., about 2 chs. distant.
 A residence bears N. 55° W., 9 chs. dist.
 A residence bears N. 11° W., 15 chs. dist.
 24.85 Wire fencing, extends west.
 25.25 Wire fencing extends E. and W., end of wire fence line from W. bears East, 3 lks. dist.
 34.80 Wire fencing, from W., extends East, 1 ch., thence S.
 35.50 Enter ranch road, from residence to the west, here turns N. Wire fencing extends north, along W. side of roadway.
 39.89 The 7/8 sec. cor., of secs. 25 and 26.
 From the 7/8 sec. cor. of secs. 25 and 26.
 S. 89° 32' W., on the E. and W. center line of sec. 26.
 Across shallow swale of low foothills, through N. side of vineyard; along wire fencing bearing irregularly W.
 Leave vineyard; wire fence extends to S.
 4.85 Short spur, extends S. 30° W. Desc. over NW. slope, 50 ft.
 8.60 Telephone line, parallels highway.
 14.55 Sand Canyon road, all surfaced, bears irregularly N. and S. Desc. 15 ft. over very gradual W. slope, through scattered oaks, along S. side of roadway extending to the west.
 15.30 Power line, 3 wires on wood poles, bears N. and S.
 17.80 Wash, 1 ch. wide, 1 ft. deep, drains N. 20° W. Asc. 10 ft. over bottom land, in margin of roadway.
 19.88 Corner of barbed wire fencing bears South 10 lks, dist., fence lines extend E. S. and W.
 32.50 Roadway extends S. Continue along center of roadway.
 39.86 The center 7/8 sec. cor.
 S. 89° 32' W., beginning new measurement.
 across plowed land; asc. 30 ft. over very gradual NE slope,
 2.80 Drain, 8 lks, wide, 1 ft. deep, course N. 70° E.

Subdivision of Section 26, T.4 N., R.15 W.