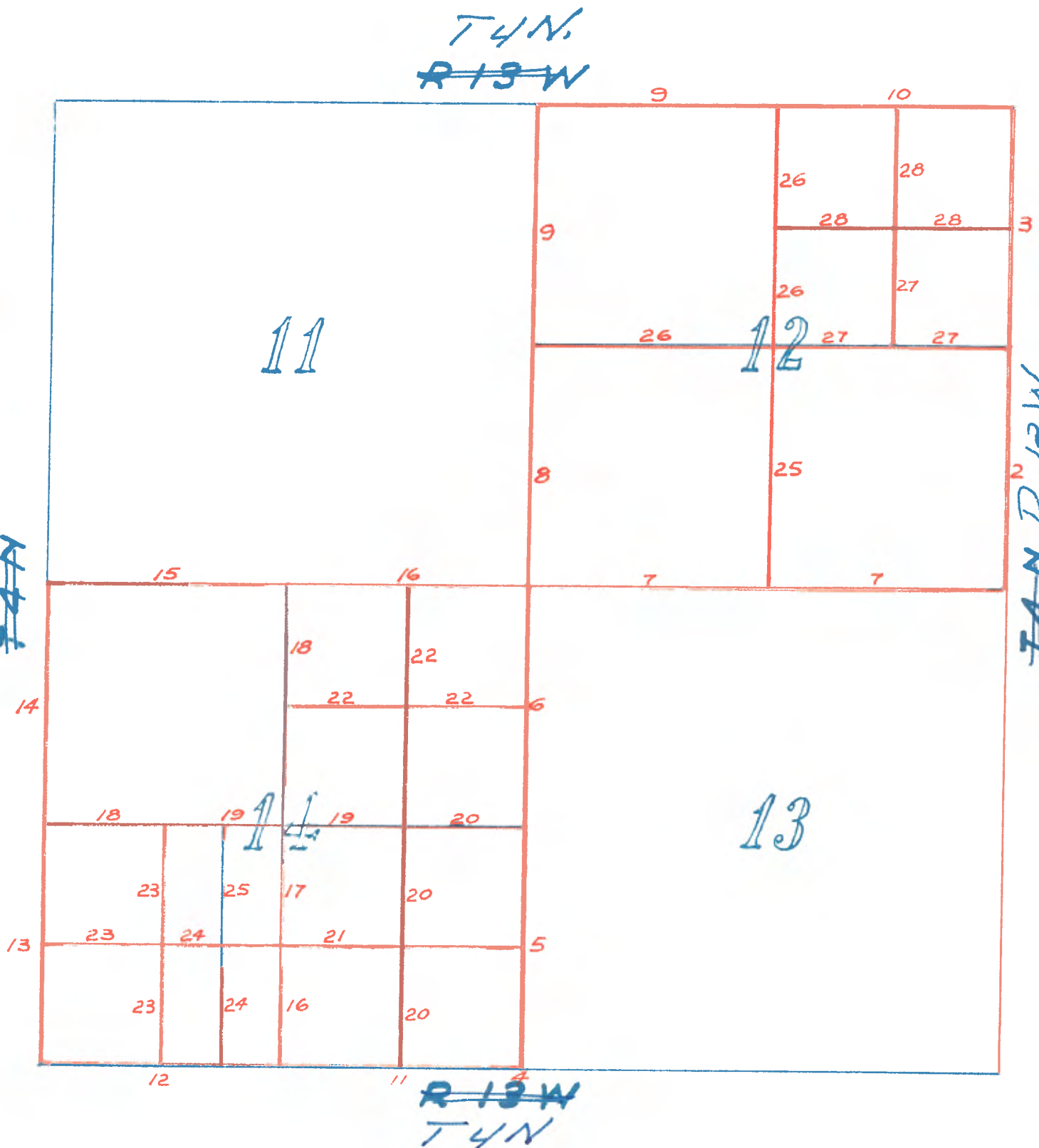


CS. 9445

FIELD NOTES OF
A DEPENDENT RESURVEY OF SUBDIVISION OF
SECTIONS 12 AND 14 T4N R13W

Copied From photostatic copies
furnished by U.S. Bureau of Land
Managemet - San Francisco Cal.



T.4 N., R.13 W.

The dependent resurvey of the boundaries of sections 12 and 14, in T.4 N., R.13 W., and a limited subdivision of section survey in said sections was undertaken to provide a basis for small tract disposals under Act of June 1, 1938; 52 Stat. 609; 43 U.S.C. 682a.

Fractional surveys in T.4 N., R.13 W., were originally executed by H. Hancock in 1856, in which secs. 1 and 12 were returned as surveyed. W. H. Norway, in 1879, completed the survey of the township, reestablishing a portion of the earlier Hancock survey in secs. 12 and 14. In 1896, L. H. Cutting resurveyed the N. 3 miles of the E. bdy. of the Tp., and the S. and W. bdrs. of Secs. 13 and 14 in his establishment of the boundaries of the then San Gabriel National Forest. W. H. Thorn's unapproved survey of the boundary of the Santa Barbara National Forest, in 1905, notes a further monumentation, and a rehabilitation of official corners on the previous Cutting San Gabriel Forest boundary.

Nearly all corners of the involved sections were remonumented by the Los Angeles County Surveyor in 1925, with brass capped iron posts, 2 ins. diam., firmly embedded in concrete base. Although present physical evidence of the original corner monument is lacking in most instances, this county establishment presents a sound, permanent and satisfactory notation of the corners of the original survey, and is so adopted.

The survey was executed with Buff & Buff transit, Serial No. 24849, and Curley transit, Serial No. 38123, constructed in accordance with the standard instrumental specifications of the Bureau of Land Management. Measurements were made with Lallie steel tapes, 5 chains in length, graduated every link for the first chain, and the remainder at intervals of 10 lks. The tapes were first tested by comparison with a Lufkin standard tape and found correct. The measurements were made on the slope, the vertical angle of each interval was ascertained by forward and rear clinometer readings; the horizontal equivalents are entered in the field note record.

The direction of all lines were determined by polaris observation, and maintained by successive angulation.

Nov. 24, 1947, at the NW. cor. of Sec. 12, T.4N., R.13 W. in latitude $34^{\circ}27'05''$ N., and longitude $118^{\circ}12'10''$ W., at 9h. 27m. 30s., standard time, make an observation upon Polaris at upper culmination, marking the line of sight upon a stake 10 chains south.

Mean observed altitude	$35^{\circ}27'15''$
Reduced latitude	$34^{\circ}28'08''$
Observed magnetic declination	15° E.

Preliminary to resurvey all lines of the governing survey were retraced, and the positions thoroughly verified. Only the true line results are noted herein.

Dependent Resurvey of Part of the East Boundary
T.4 N., R.13 W.

Chains

The cor. of secs. 12 and 13, only, on the E. bdy. of the Tp., is marked by an iron post monument, 2 ins. diam., in concrete base, 6 ins. diam., firmly set, 12 ins. above ground, and in a mound of stone, 4 ft. base, to top. Additionally mark brass cap to read

COUNTY SURVEYORS
T4N
R13W $\frac{S12}{S13}$ | S7 R12W
US BLM 1947
MONUMENT

from which the original bearing tree

A cottonwood, 18 ins. diam., bears N.47½°E., 93 lks. dist.; the old blaze badly weathered with no markings discernable. (Record N.47½°E., 92 lks.)

Alongside of monument lie remains of juniper stake, 2 ft. long, 3 ins. diam., partly decomposed, with fragmentary markings evident but not illegible.

From the corner, the closing cor. of secs. 7 and 18, T.4 N. R.12 W., bears S.2°15'E., 3.43 chs. dist., marked by a County Survey monument, 2 ins. diam., firmly set in concrete base, 6 ins. diam. To the west hereof, 3 lks. dist., is the original monument, a granite stone, 6 x 9 x 10 ins. above ground, firmly set, and mkd. as described in the official record.

From the cor. of secs. 12 and 13, T.4 N., R.13 W.

N.0°22'W., along the E. bdy. of sec. 12.

Over rolling mountainous land, through heavy undergrowth.

- 0.06 Intersect iron post monument, 3½ ins. diam., firmly set, 2 ins. above mound of stone, 4 ft. diam., 1 ft. high, with brass cap marked as described in the rejected 1905 survey record.
- Asc. 165 ft. over an increasins S. slope.
- 12.00 Small spur, slopes SE.; leave undergrowth, bearing E. and W., entering old burn. Continue ascent 160 ft. over SE.slope.
- 18.00 Change of slope to NE., Desc. 75 ft.
- 22.30 Head of shallow gully, course E.; asc. 145 ft. over SE. slope.
- 27.20 Ridge, bears NE. and SW. Desc. 220 ft. over a NW. slope, changing to N.
- 35.30 Draw. course S.75°W., asc. 20 ft. over SW. slope.
- 38.78 The ¼ sec. cor., of sec. 12 only, marked by an iron post monument, 2 ins. diam., firmly set in concrete base, 8 in. diam., 12 ins. above ground, and in a mound of stone to top. Additionally mark brass cap to read

Dependent Resurvey of Part of the East Boundary
T.4 N., R.13 W.

Chains

COUNTY SURVEYORS

T₄N
R13W S12 | R12W
1
4 COR

US BLM 1947
MONUMENT

Raise a mound of stone, 2½ ft. base, 1½ ft. high, W. of cor.
N.1°20'W., beginning new measurement.

Asc. 280 ft. over SW. slope.

- 0.35 Drain, course SW.
- 5.40 Gully, course SW.; change of slope to S.,
- 9.00 Short rocky spur, extends S.30°W., about 1 chain, then
breaks sharply to SW.
- 10.00 Change of slope to SW., continue ascent.
- 12.00 Spur, slopes W. Desc. 155 ft. over NW. slope.
- 17.25 Draw, near head, course W. Asc. 35 ft. over SW. slope.
- 19.36 Point for N. 1/16 sec. cor., of sec. 12 only, at propor-
tionate distance.

Set an iron post, 3 ft. long, 1 in. diam., 18 ins. in the
ground, to bedrock, and in a mound of stone 5 ft. base, 1½
ft. high, with brass cap mkd.

N¹/₁₆ |
S 12 |
1947

Bury a granite stone, 8x4x3 ins., marked + alongside iron post.

Continue ascent 240 ft.

- 19.55 Drain, course SW.
- 26.10 Head of gully, course SW.
- 27.50 Top of ascent; over W. slope, near crest of flat mountain peak.
- 27.60 An iron post monument, 3½ ins. diam., firmly set, 10 ins.
above mound of stone, 5 ft. base, 2 ft. high, bears West,
23 lks. dist., with brass cap mkd. as described in the re-
jected 1905 survey record.
- 28.50 Desc. 40 ft. over NW. slope.
- 35.00 Change of slope to NE.; desc. 90 ft.
- 37.84 Intersect the closing cor. of secs. 6 and 7, marked by an iron
post monument, 2 ins. diam., firmly set in concrete base, 6 ins.
diam., 4 ins. above ground, marked on brass cap.

Dependent Resurvey of part of the East Boundary
T.4 N., R.13 W.

Chains

COUNTY SURVEYOR

T4N
R13W S12 R12W

CC
MONUMENT

West hereof, $2\frac{1}{4}$ lks. dist., is the original closing corner monument, a granite stone, 6 x 8 x 6 ins., above ground firmly set, marked CC on the E. face, 5 grooves on the S. and 1 groove on the N. faces.

- 38.72 The cor. of secs. 1 and 12 only, T.4N., R.13 W., marked by an iron post, 2 ins. diam., firmly set in concrete base 6 ins. diam., 12 ins. above ground, and in a mound of stone to top. Additionally mark brass cap to read

COUNTY SURVEYOR

T4N
R13W S1 S6 R12W
S12

RE 2177
US BLM 1947
MONUMENT

Raise a mound of stone, $2\frac{1}{2}$ ft. base, 2 ft. high, W. of cor. Three strand barbed wire fencing, in dilapidated condition, bears N. and W. from this corner.

Land, rolling mountains,
Soil, rocky, 3rd. and 4th. rate.
No timber; creosote brush and buckwheat in extreme south, remainder barren of verdure due to recent fire.

Dependent Resurvey of Part of the Subdivision, T.4 N., R.13 W.

The corner of secs. 13, 14, 23 and 24 is marked by an iron post 2 ins. diam., firmly set in concrete base, 6 ins. diam., 2 ins. above ground. Additionally mark brass cap to read

COUNTY SURVEYORS

T4N
R13W S14 S13
S23 S24

US BLM 1947
MONUMENT

Alongside of corner is the 1896 resurvey monument, a manzanita stake, 3 ft. long, 3 ins. square, marked as described in the official record.

Raise a mound of stone, 3 ft. base, 2 ft. high, W. of cor.

Dependent Resurvey of Part of the Subdivision
T.4 N., R.13 W.

Chains

N.0°17'E., bet. secs. 13 and 14.

Over broken, hilly, land, through heavy undergrowth.

Desc. 100 ft. over N. slope.

3.25 Gully, course NE. continue over E. slope.

6.25 Desc. 70 ft. over N. slope.

11.35 Gully, course E. asc. 30 ft.

12.50 Small spur, slopes N.80°E.; desc. 65 ft. over N. slope.

15.15 Head of drain, course N.70°E.; asc. 45 ft. over SE. slope.

19.60 Flat spur, from SW, turns to N.; along W. slope, near top of small spur.

19.98 Point for S. 1/16 sec. cor. of secs. 13 and 14, at proportionate distance.

Set an iron post, 3 ft. long, 1 in. diam., 3/4 ins. in the ground, with brass cap mkd.

S 1/16
S 14 | S 13
1947

bury a granite stone, 8 x 6 x 5 ins, marked + alongside iron post.

23.00 Same spur, bearing N.20°W.; desc. 105 ft. along E. slope, gradually changing to NE.

32.00 Change to NE. slope; desc. 100 ft.

38.30 Ravine, course NW., soon turning to W. Asc. 50 ft. over SW. slope.

39.96 The 1/4 sec. cor. of secs. 13 and 14, marked by an iron pipe 3/4 ins. diam., 2 ft. long, driven firmly into the ground, in center of old mound of stone.

At the corner point

Set an iron post, 3 ft. long, 1 in. diam., 30 ins. in the ground, and in a supporting half mound of stone, 4 ft. base, to top, with brass cap mkd.

1/4
S 14 | S 13
1947

Corner monument is situated on brow of precipitous, short SW. slope, breaking into ravine.

N.0°22'E., beginning new measurement.

Asc. 50 ft. over a decreasing SW. slope.

2.34 Three strand, barbed wire fencing, extends to W., and N.

Dependent Resurvey of Part of the Subdivision
T.4 N., R.13 W.

Chains

- 3.15 Old roadway, bearing W. and SE., long abandoned and now impassable.
- 3.28 Two wire electric power line, on wood poles, from N., extends to SE. Continue along wire fencing, and pole line, cleared of undergrowth.
- 5.70 Low divide, on W. slope of bench land, bears SW. to narrow saddle about $1\frac{1}{2}$ chs. dist.
- Desc. 50 ft. along gradual W. slope.
- 8.70 Gully, course NE.
- 10.00 Same gully, course N.
- 11.40 Leave gully, course N.15°W.; continue descent 10 ft.
- 19.93 point for N. 1/16 sec. cor., of secs. 13 and 14, at proportionate dist.

Set an iron post, 3 ft. long, 1 in. diam., $2\frac{1}{4}$ ins. in the ground, to bedrock, and in a mound of stone, 3 ft. base, to top, with brass cap mkd.

N $\frac{1}{16}$
S 14 | S 13
1947

Desc. 30 ft. over gradual NW. slope.

- 36.50 Over mesa land, sloping gently to the N.
- 39.86 The cor. of secs. 11, 12, 13 and 14, marked by brass capped iron post, 2 ins. diam., firmly set in concrete base, 6 ins. diam., 12 ins. above ground, and in a mound of stone to top. Additionally mark brass cap to read

COUNTY SURVEYOR
T4N
S 11 | S 12
R13W S 14 | S 13
SEC COR
US BLM 1947
MONUMENT

Raise a mound of stone, 2 ft. $1\frac{1}{2}$ ft. high, W. of cor.
Three strand barbed wire fencing extends N., E., S. and W. from this corner.

Land, hilly,
Soil, rocky clay, 3rd. rate.
Scattered juniper, chaparral and cresote brush.

S.89°05'E., bet. secs. 12 and 13.

Over bench land, through scattered shrub timber; along 3 strand, barbed wire fencing.

Desc. 25 ft.

- 9.40 Shallow gully, course N.

Dependent Resurvey of Part of the Subdivision
T.4 N., R.13 W.

Chains

- 12.50 Leave mesa land; desc. 50 ft. over broken NE. slope.
- 13.80 Road, from lilac ranch, in SW. $\frac{1}{4}$ sec. 13, bears irregularly N. to Acton
- 17.00 Gully, course N.
- 18.00 Leave wire fencing, extends slightly to S. of east.
- 24.00 Arrastre Canyon, 2 chs. wide, course NW., carrying a small flow of water.
- Asc. 65 ft. over SW. slope.
- 27.00 over mesa land, bearing NW. and SE., Asc. 40 ft. over gradual W. slope, through light undergrowth to partially cleared land.
- 39.52 Point for $\frac{1}{4}$ sec. cor. of secs. 12 and 13, at proportionate distance from E. and W. controls, and on line of segments of old and dilapidated fencing extending to the W. and S.
- At the corner point
- Set an iron post, 5 ft. long, 1 in. diam., 35 ins. in the ground, with brass cap mkd.
- $$\begin{array}{r} \frac{1}{4} \text{ S } 12 \\ \hline \text{S } 13 \\ 1947 \end{array}$$
- Bury a black syenite stone, 8 x 5 x 4 ins., marked + alongside iron post.
- Corner monument is situated on the S. embankment of a small raised reservoir, and about 1 ch. wide, and 2 chs. long.
- From the corner a stone residence, 15 x 20 ft., bears N. $22\frac{1}{2}^\circ$ E., 2 chs. dist.
- N. $86^\circ 47'$ E., beginning new measurement.
- 1.50 Shed, bears N., 160 lks. dist. leave bench land, bearing NW. and SE.; desc. 40 ft. over NE. slope, thru heavy undergrowth.
- 3.50 Road, bears NW. and SE.
- 7.50 Shallow draw, 1 ch. wide, course NW. Continue over broken hilly land; asc. 85 ft. along SW. slope, thru light undergrowth.
- 18.00 Small spur, slopes S. 30° W. Desc. 25 ft.
- 21.00 Small draw, course S. 20° W. Asc. 60 ft.
- 25.50 Small spur, slopes S. Over broken S. slope, desc. 50 ft.
- 28.30 Gully, course S. 20° W.
- 31.00 Spur, slopes S. 20° E.
- 32.70 Gully, course S.
- 34.50 Small spur, slopes S.
- 39.58 The cor. of secs. 12 and 13 only, on E. bdy. of the Tp.

6.50 Residence bears E., about 1/4 chs. dist.
7.40 Road, from SE., in N. margin of sandy wash 50 lks. wide.
14.50 Foot of slope, and over bottom land, bearing to NW.
Desc. 25 ft. over N. slope, along E. side of roadway.
N. 0° 07' E., beginning new measurement.
N., S. and W., bears S. 73° W., 39 lks. dist.
Corner of three strand barbed wire fencing, extending
Four strand barbed wire fencing extends S. and E., from
corner.
From the corner, pole No. 699607E; of two wire electric
power line, extending N. and S., bears N. 61-3/4° E., 10 lks.
dist.

MONUMENT
US BLM 1947
COR
SEC 11
R13W
T4N
COUNTY SURVEYOR

40.24 The 1/4 sec. cor., of secs. 11 and 12, marked by an iron post
monument, 2 ins. diam., firmly set in concrete base, 6 ins.
diam., 10 ins. above ground. Additionally mark brass cap to
reading NW.

32.50 Wire fencing, from SE., extends N., along E. side of road,
Top of ascent, and desc. gradually over sloping bench land
bearing NW.

31.00 Graded roadway, from SE., turns N.
Fencing, from S., extends to NW., bordering roadway.

28.00 Leave bottom land; asc. 30 ft. over S. slope.
21.00 Enter wash of Arastre Canyon, S chs. wide, course NW.

16.30 Water ditch, 3 lks. wide, 1 ft. deep, course NW., at base of
slope, Across bottom land.
13.50 Leave bench land, bearing NW. and SE.; desc. 95 ft. over slope.
12.54 Three strand barbed wire fencing extends to the W.,

growth; along wire fencing extending to the N. Desc. 40 ft.
Over gently sloping bench land, through scattered under-
N. 0° 33' E., bet. secs. 11 and 12.
From the cor. of secs. 11, 12, 13 and 14.

Chains

A few cottonwood trees along Arastre Canyon.
sage brush.
Scattered juniper, creosote brush, chaparral; buckwheat and
Soil, rocky clay, 3rd rate.
Land, broken and rolling hills.

T. 4 N., R. 13 W.
Dependent Reservey of part of the Subdivision

Dependent Resurvey of Part of the Subdivision
T.4 N., R.13 W.

Chains

- 15.00 Wash, 30 lks. wide, course N.80°W. A residence bears East about 5 chs. dist.
- 19.64 Pole No. 699602E, of 3 wire electric power line, bears East, 19½ lks. dist. Power line, from NE., extends South.
- 24.80 Enter oil surfaced road, from N., leading SE. to Camp Actom.
- 33.90 Soledad Canyon Highway, oil surfaced, bears NE. and SW. End of roadway from the south. Leave bottom lands, asc. 30 ft. over SE. slope.
- 34.80 Telephone line, 4 wires, on wood poles, parallels railroad.
- 36.12 Southern Pacific Railroad, single track, bears N.27½°E., and curves to SW., alg base of hills, on West side of Soledad Cn.
- 37.30 Point of bluff bank of bench land, sloping from NW.
- 37.54 Telegraph line, 39 wires, on wood poles, parallels railroad.
- 38.25 Gully, 15 ft. deep, 1 ch. wide, drains SE. to railroad culvert No. 427.02.
- 40.35 The co. of secs. 1, 2, 11 and 12, marked by County Survey monument, a brass capped iron post, 2 ins. diam., in concrete base, 6 ins. diam., 24 ins. below surface of ground.

At the corner point, and upon this monument

Set an iron post, 3 ft. long, 2 ins. diam., 24 ins. in the ground, and in a mound of stone, 3 ft. base, to top, with brass cap mkd.

T4N R13W
S 2 | S 1
S 11 | S 12
1947

Corner is situated upon a small bench, sloping from NW.

Land, broken mesa in S., bottom land in N.
Soil, rocky clay, 3rd. and sandy loam, 2nd. rate.
Timber, cottonwood in canyon bottom, scrub cedar in mesa.
Scattered creosote brush, sage and buckwheat.

S.87°54'E., bet. secs. 1 and 12.

Desc. slightly, over E. slope.

- 1.37 Telegraph line, 39 wires, on wood poles, parallels railroad. Desc. 20 ft. over E. slope.
- 2.13 SPRR, single track, bears N. 27½°E. and S. 27½°W.
- 2.63 Telephone line, 5 wires, on wood poles, parallel railroad.
- 2.90 Soledad Canyon Highway, oil surfaced, bears NE. and SW., paralleling railroad.

Dependent Resurvey of Part of the Subdivision
T.4 N., R.13 W.

Chains

- 3.20 Enter Soledad Wash, course S.20°W.
7.60 Leave wash, over bottom land.
15.90 West terminus of wire fencing, from the E., continue along south side of wire fencing, in cleared land.
26.00 Enter grove of cottonwood trees, 4 chs. wide, bearing NE & SW.
32.00 Three wire electric power line, bears NE. and SW. Leave bottom land, asc. 30 ft. over NW. slope.
39.24 The $\frac{1}{4}$ sec. cor. of secs. 1 and 12, marked by an iron post 2 ins. diam., in concrete base, 6 ins. diam., firmly set, 4 ins. above ground, Additionally mark brass cap to read

COUNTY SURVEYOR
T4N
R13W $\frac{\text{SEC } 1}{\text{SEC } 12}$
 $\frac{1}{4}$ COR
US BLM 1947
MONUMENT

Raise a mound of stone, 3 ft. base, $1\frac{1}{2}$ ft. high, N. of cor.

Three strand, barbed wire fencing extends to E., S. and W. from this corner.

S.89°55'E., beginning new measurement.

Asc. 320 ft. over NW. slope, along wire fencing to N.

- 6.00 Gully, course N.70°W.
12.00 Shoulder of small spur, breaks sharply to NW.
19.12 Point for E. $1/16$ sec. cor. of secs. 1 and 12.
Set an iron post, 3 ft. long, 1 in. diam., $3/4$ ins. in the ground, with brass cap mkd.
 $\begin{array}{r} \text{S } 1 \\ \text{E } \frac{1}{16} \text{---} \text{S } 12 \\ 1947 \end{array}$
Raise a mound of stone, 3 ft. base, $1\frac{1}{2}$ ft. high, N. of cor.
Continue ascent 350 ft. over NW. slope.
27.20 Drain, course N., Continue over a decreasing NW. slope.
36.50 Shoulder of mountain, breaks to the N., Desc. 50 ft. over NE slope.
38.24 The cor. of secs. 1 and 12 only, on the E. bdy. of TP.

Land, bottom land in W, $\frac{1}{4}$; mountainous in E.
Soil, sandy, and rocky, 2nd. and 3rd. rate.
Cleared land in bottom area, recent burn in mountains;
very little undergrowth.
A small belt of cottonwood timber along E. margin of canyon.

Dependent Resurvey of Part of the Subdivision
T.4 N., R.13 W.

Chains

From the cor. of secs. 13, 14, 23 and 24.

N.89°48'W., bet. secs. 14 and 23.

Over mountainous land, through scattered undergrowth.

0.06 Intersect iron post monument, 3½ ins. diam., firmly set, 10 ins. above ground, with brass cap mkd. as described in the rejected 1905 survey record.

Desc. 25 ft. over steep N. slope.

2.20 Gully, course N.60°E.; asc. 310 ft. over E. slope.

12.30 Ridge, bears NW. and SE.; desc. 185 ft. over SW. slope.

20.76 Point for E. 1/16 sec. cor. of secs. 14 and 23, at proportionate dist.

Set an iron post, 3 ft. long, 1 in. diam., 30 ins. in the ground, with brass cap mkd.

E 1/16 S 14
S 23
1947

bury a black syenite stone, 6 x 4 x 3 ins., marked + along side iron post.

Raise amount of stone, 2 ft. base, 1½ ft. high, N. of cor.

Continue descent 310 ft., over broken SW. slope.

28.85 Small spur, slopes SW.; desc. 170 ft. over W. slope.

36.00 Foot of slope, bearing NW. and S., Desc. 30 ft. over bottom land, through dense sage brush.

41.52 The ¼ sec. cor. of secs. 14 and 23, marked by an iron post, 2 ins. diam., firmly set in concrete base, 6 ins. diam., flush with surface of ground. Additionally mark brass cap to read

COUNTY SURVEYORS
T4N
R13W 1 S 14
4 S 23
1/4 COR
US BLM 1947
MONUMENT

Raise a mound of stone, 2 ft. base, 1½ ft. high, N. of cor.

S.88°36'W., beginning new measurement.

Desc. 15 ft., over washed bottom land, draining NW.

3.50 Flat wash, 50 lks. wide, course N.10°W. Asc. 22 ft.

6.70 Narrow spur, slopes NW., desc. 55 ft. over W. slope.

9.30 Drain, course NW.

Dependent Resurvey of Part of the Subdivision
T.4 N., R.13 W.

Chains

- 9.635 Point for E.-W. $1/64$ sec. cor., of secs. 14 and 23, at proportionate dist.
Set an iron post, 3 ft. long, 1 in. diam., 32 ins. in the ground, with brass cap mkd.
S 14
E-W- $1/64$
S 23
1947
Raise a mound of stone, 2 ft. base, $1\frac{1}{2}$ ft. high, N. of cor.
Asc. NE. slope 60 ft.
- 13.50 Short spur, slopes N.; desc. 20 ft. over NW. slope.
- 16.00 Wash, 30 lks. wide, course N.; asc. 40 ft. over NE. slope.
- 19.27 Point for W. $1/16$ sec. cor. of secs. 14 and 23, at proportionate dist.
Set an iron post, 3 ft. long, 1 in. diam., 32 ins. in the ground, with brass cap mkd.
W $1/16$ S 14
S 23
1947
Raise a mound of stone, 2 ft. base, $1\frac{1}{2}$ ft. high, N. of cor.
Continue ascent 55 ft. over NE. slope.
- 22.70 Drain, course NE., asc. 50 ft.
- 24.50 Spur, slopes NE.; desc. 35 ft.
- 26.00 Drain, course N.10°E.; asc. 110 ft.
- 28.00 Drain, course NE.
- 30.40 Spur, slopes NE.; desc. 35 ft.
- 33.70 Gully, near head, course N.20°E.; asc. 130 ft. over NE.slope.
- 36.90 Spur, slopes N., near apex of ridge peak. Desc. 35 ft. over NW. slope.
- 36.93 Intersect iron post monument, $3\frac{1}{2}$ ins. diam., firmly set, 12 ins. above ground, mkd. on brass cap as described in the rejected 1905 survey record.
- 38.54 The cor. of secs. 14, 15, 22 and 23, marked by an iron post, 2 ins. diam., firmly set in concrete base, 6 ins. diam., 8 ins. above ground. Additionally mark brass cap to read

COUNTY SURVEYORS

T4N
S 15 S 14
R13W S 22 S 23
US BLM 1947
1925
MONUMENT

Dependent Resurvey of Part of the Subdivision
T.4 N., R.13 W.

Chains

Raise a flat mound of stone, 3 ft. base, 8 ins. high, around iron post.

Land, mountainous
Soil, rocky, 3rd. rate.
Scattered scrub oak and cedar; creosote brush, cherry, chaparral and sage.

N.0°07'E., bet. secs. 14 and 15.

Over mountainous land, through heavy undergrowth.

Desc. 270 ft. over NW. slope.

15.70 Spur, slopes NW.; desc. 50 ft. over NE. slope.

18.30 Ravine, course NE.; along E. slope.

19.89 Point for S. 1/16 sec. cor. of secs. 14 and 15, at proportionate dist.

Set an iron post, 3 ft. long, 1 in. diam., 32 ins. in the ground, with brass cap mkd.

S $\frac{1}{16}$
S 15 | S 14
1947

Raise a mound of stone, 2 ft. base, 1½ ft. high, W. of cor.

22.80 Spur, slopes NE. Desc. 110 ft. over a decreasing N. slope.

25.50 Drain, course N.30°E.

27.50 Leave undergrowth and enter cleared land, bearing E. and W.

33.60 Local roadway, from residence about 5 chs. distant, bears N.20°E.

34.50 Shallow drain, course NW.

39.25 Cross same road, bearing N.15°W.

39.78 The ¼ sec. cor. of secs. 14 and 15, marked by an iron post, 2 ins. diam., in concrete base, 6 ins. diam., firmly set, 2 ins. above ground, additionally mark brass cap to read

COUNTY SURVEYORS
T4N
1
S 15 | S 14
R13W
US BLM 1947
1925
MONUMENT

Dependent Resurvey of Part of the Subdivision
T.4 N., R.13 W.

Chains

- Three strand barbed wire fencing extends E. and W. from cor.
- N.0°04'W., beginning new measurement.
- Asc. 20 ft. over gradual SW. slope.
- 4.00 Change of slope to NW., desc. 35 ft.
- 5.80 Drain, course W.; asc. 15 ft.
- 9.35 Scraped roadway, bears irregularly SE. and NW.
- 12.70 Low spur, slopes NW. Desc. 65 ft. over gradual N. slope.
- 16.00 Roadway, bears SW. and NE.
- 17.56 Old fencing, extends E. and W.
- 19.95 Local N. 1/16 sec. cor. monument; an iron pipe, 2 ins. diam., firmly set, 8 ins., above ground. Four strand barbed wire fencing extends to E. and N. from this point, which is also the NE. juncture of roadways extending E., N., and SW.
- Desc. 30 ft. over gradual N. slope, along E. side of fenced roadway.
- 30.70 Road bears NW. to Ravenna. Enter washed bottom land of Soledad Canyon.
- 36.00 End of stub roadway from South.
- 37.60 Enter stream bed, water 10 lks. wide, 2 ins. deep, course SW.
- 38.40 Stream of water, 10 lks. wide, 4 ins. deep, course S.80°W.
- 38.90 Leave wash bottom, course S.80°W., Asc. 15 ft.
- 39.67 Four strand barbed wire fencing, along right of way of Southern Pacific Railroad, bears N.57°E. and S. 57°W.
- 39.90 The cor. of secs. 10, 11, 14 and 15, marked by an iron post 2 ins. diam., firmly set in concrete base, 6 ins. diam., flush with surface of the ground. Additionally mark brass cap to read

COUNTY SURVEYOR

T4N
S 10 | S 11
R13W S 15 | S 14
US BLM 1947
1925
MONUMENT

Established reference objects are noted as follows:

point centered circles, 1 in. diam., in top facing of concrete wall of railroad culvert, 4½ ft. high, 1½ ft. wide, 6½ ft. long, bear N. 13°05'W., 14.3 lks., dist. and N.46°45'W., 16.7 lks, dist., respectively.

Land, mountainous, and rolling.
Soil, rocky clay and gravel, 3rd rate.
Undergrowth, creosote brush, scrub oak, chaparral and sage.
A few scattered cedar.

Dependent Resurvey of part of the Subdivision
T.4 N., R.13 W.

Chains

- East, bet. secs. 11 and 14.
- Desc. 10 ft. over gradual SE. slope.
- 0.35 Four strand barbed wire fencing, along railroad right of way, bears N.57°E. and S.57°W.
- 1.00 Enter Soledad Canyon wash, course SW.
- 1.60 Stream of water, 15 lks. wide, 6 ins. deep, course S.50°W.
- 5.00 Enter scattered cottonwood timber.
- 18.00 Leave wash bottom, and timber, course SW. Asc. 20 ft.
- 19.85 Four strand barbed wire fencing, bears irregularly NE. & SW.
- 20.60 Concrete irrigation conduit, 10 ins. diam., course S.50°W.
- 21.25 Three strand barbed wire fencing, extends SE. Asc. 45 ft. over SW. slope.
- 23.33 Three wire electric power line, on wood poles, bears N.33°E. and S.33°W.
- 32.00 Small spur, slopes N.80°W. Desc. 20 ft.
- 40.25 Drain, 5 lks. wide, 2 ft. deep, in shallow swale, course N.70°W.
- 40.36 The $\frac{1}{4}$ sec. cor. of secs. 11 and 14, marked by an iron post, 2 ins. diam., in concrete base, 6 ins. diam., firmly set, 2 ins. above ground. Additionally mark brass cap to read
- COUNTY SURVEYOR
T4N
SEC 11
R13 W SEC 14
 $\frac{1}{4}$ COR
US BLM 1947
MONUMENT
- Raise a mound of stone, 2 ft. base, $1\frac{1}{2}$ ft. high, N. of cor.
- Three strand barbed wire fencing, extends E. and S. from cor.
- N.88°40'E., beginning new measurement.
- Asc. 30 ft. over SW. slope, along fencing, through scattered undergrowth.
- 2.30 Short spur, slopes N.
- 7.50 Swale, drains NW., Asc. 50 ft. over W. slope.
- 12.70 Spur, slopes NW. Desc. 20 ft. over NE. slope.
- 14.00 Gully, course NW. Asc. 30 ft. over W. slope.
- 16.00 Spur, slopes NW.
- 17.75 Drain, course N.60°W. Asc. W. slope, 30 ft.
- 20.10 Point for E. 1/16 sec. cor. of secs. 11 and 14.

Dependent Resurvey of Part of the Subdivision
T.4 N., R.13 W.

Chains

Set an iron post, 3 ft. long, 1 in. diam., 32 ins. in the ground, with brass cap mkd.

$$\begin{array}{r} \text{E } \frac{1}{16} \text{ S } 11 \\ \text{S } 11 \frac{1}{4} \\ 1947 \end{array}$$

Bury a granite stone, 14 x 8 x 6 ins., marked + alongside iron post.

Raise a mound of stone, 2 ft. base, 1½ ft. high, N. of cor.

- 21.00 Small spur, slopes NW.
- 21.75 Drain, course N.30°W. Asc. 30 ft. over NW. slope.
- 24.10 Flat spur, slopes N. Desc. 25 ft.
- 28.00 Wash, 10 lks. wide, course N.20°E. Over slightly rolling N. slope.
- 34.80 Wash, 20 lks. wide, course N. Asc. 50 ft.
- 38.50 Top of ascent; over bench land, sloping NW.
- 40.20 The cor. of secs. 11, 12, 13 and 14.

Land, hilly,
Soil, sand and gravel in canyon bed, rocky clay in hills,
3rd rate.
Scattered cedar; creosote brush, chaparral, sage.
A narrow belt of cottonwood timber in canyon bottom.

Subdivision of Section 14.

From the ¼ sec. cor. of secs. 14 and 23.

N.1°20'E., on the N. and S. center line of sec. 14.

Over bottom land, through dense undergrowth.

- 2.00 Foot of broken hills, bear NW. and SE. Asc. 50 ft. over SW slope.
- 8.75 Short gully, course S.70°W.
- 10.15 Small spur, slopes W. Desc. 90 ft. over N. slope.
- 14.00 Short gulch, course W. Asc. 20 ft.
- 16.70 Small spur, slopes N.60°W. Desc. 60 ft. over NW. slope.
- 19.68 Point for center S. 1/16 sec. cor.

Set an iron post, 3 ft. long, 1 in. diam., 34ins. in the ground, with brass cap mkd.

$$\begin{array}{r} \text{S } \frac{1}{16} \text{ C } \text{S } 14 \\ \text{C } \\ 1947 \end{array}$$

Subdivision of Sec. 14,
T.4 N., R.13 W.

Chains

Bury a quartz stone, 6 x 6 x 3 ins., marked + alongside iron post.

Raise a mound of stone, 2 ft. base, 1 ft. high, W. of cor.

Desc. 80 ft. over gradual NW. slope, through dense undergrowth.

34.10 Shallow gully, course W. Asc. 20 ft.

36.50 Small, narrow spur, slopes NW., from S.20°E. Desc. 35 ft.

38.00 Across flat, shallow draw, draining NW.

39.36 Point for center $\frac{1}{4}$ sec. cor., at intersection with E. and W. center line.

Set an iron post, 3 ft. long, 1 in. diam., 32 ins. in the ground, with brass cap mkd.

C $\frac{1}{4}$ S 14

1947

Raise a mound of stone, 2 ft. base, 1 ft. high, W. of cor.

N.1°20'E., beginning new measurement.

Over sandy flat, draining NW.

1.60 Asc. 55 ft. over SW. slope.

5.00 Top of ascent, and across narrow, rocky mesa, sloping W.

6.50 Desc. 60 ft. over N. slope.

7.20 Foot of slope; enter wash, course W.

11.80 Drainage channel, course W. Leave wash, asc. 80 ft. over S. slope.

14.60 Spur, slopes N.80°W., three strand barbed wire fencing bears irregularly S.75°E., and N.75°W., and to the North.

Desc. 55 ft. over a decreasing N. slope, along wire fence.

19.72 Point for center N. $\frac{1}{16}$ sec. cor.

Set an iron post, 3 ft. long, 1 in. diam., 34 ins. in the ground, with brass cap mkd.

N $\frac{1}{16}$ S 14

1947

Bury a granite stone, 6 x 5 x 4 ins., marked + alongside iron post.

Raise a mound of stone, 2 ft. base, $1\frac{1}{2}$ ft. high, W. of cor.

Three strand barbed wire fencing extends N. and S.

Desc. 15 ft. over very gradual slope.

Subdivision of Section 14
T.4 N., R.13 W.

Chains

- 20.75 Drain; course NW.
- 23.45 Drain, course W.
- 27.30 Shallow gully, course W. Over rolling land.
- 31.00 Gully, from SE.
- 31.80 Gully, from E., course N.70°W.
- 33.90 Small spur, slopes W.
- 38.50 Swale, draining NW.
- 39.40 Drain, course N.60°W.
- 39.44 The $\frac{1}{4}$ sec. cor. of secs. 11 and 14.

From the $\frac{1}{4}$ sec. cor. of secs. 14 and 15.

N.89°18'E., on the E. and W., center line of sec. 14.

Over brokenland, through scattered undergrowth, and south of old wire fencing, extending to the East.

Asc. 75 ft. over W. slope.

- 3.60 Spur, slopes N.20°W. Desc. 65 ft.
 - 7.50 Shallow draw, draining N.
 - 8.75 Small spur, slopes NW.
 - 9.64 Roadway, bears NW. and SE.
 - 9.85 Drain, 10 lks. wide, course N.30°W.
 - 9.99 End of fencing from the W., at wire fence line from N., which extends South, 23 lks., thence East.
 - 15.20 Wash, 30 lks. wide, course N.40°W. Asc. 45 ft. over W.slope.
 - 18.40 Top of ascent; across flat spur, sloping N.30°W.
 - 18.48 Enter concrete lined, dug reservoir, 15 lks, N. of the S wall thereof; reservoir is 44lks. wide, 100 lks. long, and 5 ft deep.
 - 19.47 Leave reservoir.
 - 19.69 Approximate center of masonry building, 20 lks. square, 8½ ft. high, supporting a galvanized water tank, 10 ft. diameter, 5 ft. high. Building is oriented N. and S.
 - 19.69 Point for center W.1/16 sec. cor., lying within the above structure is not accessible.
 - 19.99 Establish a witness monument for center, W. 1/16 sec. cor.
- Set an iron post, 3 ft. long, 1 in. diam., 32 ins. in the ground, with brass cap mkd.

WC-W $\frac{1}{16}$
C — C
S 14
1947

Subdivision of Section 14
T.4 N., R.13 W.

Chains

Raise a mound of stone, $2\frac{1}{2}$ ft. base, $1\frac{1}{2}$ ft. high, N. of cor.

Wire fencing, from N., extends S. 24 lks., then W.

20.20 Desc. 45 ft. over NE. slope.

22.90 Gully, course N. Asc. 35 ft.

24.90 Small spur, slopes N. Desc. 55 ft. over E. slope.

27.50 Across shallow draw, course N. 20° W.

29.535 Point for center E-W $1/64$ sec. cor.

Set an iron post, 3 ft. long, 1 in. diam., 32 ins. in the ground, with brass cap mkd.

E-W $1/64$
C — C
S (13) — 14
1947

Raise a mound of stone, $2\frac{1}{2}$ ft. base, 1 ft. high, N. of cor.

31.30 Drain, 20 lks. wide, course NW. Asc. 20 ft.

33.00 Point of low spur, slopes NW. Desc. 5 ft.

35.00 Swale, drain NW. Asc. 20 ft.

38.00 Point of spur, from SW. Across shallow draw, draining NW.

39.38 The center $\frac{1}{4}$ sec. cor., at intersection of N & S center line.

N. $89^{\circ}18'$ E., beginning new measurement.

2.75 Leave bottom land; asc. 95 ft. over SW. slope.

10.00 Margin of bench land, bearing NW. and SE. Asc. 50 ft. over flat NW. slope.

20.44 Point for center E. $1/16$ sec. cor.

Set an iron post, 3 ft. long, 1 in. diam., 30 ins. in the ground, with brass cap mkd.

E $1/16$
C — C
S $1/4$
1947

Raise a mound of stone, 2 ft. base, $1\frac{1}{2}$ ft. high, W of cor.

Asc. 20 ft. over flat, NW. slope.

25.00 Desc. 80 ft. over NE. slope.

32.60 Wash, 40 lks. wide, 8 ft. deep, course N. 75° W., in narrow draw.

Asc. 50 ft. over SW. slope.

Subdivision of Section 14
T.4 N., R.13 W.

Chains

- 35.00 Short spur, slopes S., from small peak. Desc. 40 ft.
 36.50 Same wash, 30 lks. wide, 10 ft. deep, course SW. Asc. 35 ft. over NW. slope.
 37.50 Desc. 30 ft. over NE. slope.
 39.00 Same wash, 25 lks. wide, 10 ft. deep, course N.70°W., in turn from SE.
 Asc. 75 ft. over sharp SW. slope.
 40.88 The $\frac{1}{4}$ sec. cor., of secs. 13 and 14.

From the E. 1/16 sec. cor. of secs. 14 and 23.

N.0°48'E., on the N. and S. center line of SE $\frac{1}{4}$ of sec. 14.
 Asc. 190 ft. over a decreasing S. slope, thru scattered undergrowth.

- 4.75 Shoulder of ridge, from SE., breaks sharply to the W.
 Desc. 500 ft. over N. slope.
 19.81 point for SE. 1/16 sec. cor., at intersection with the E. and W. center line of SE $\frac{1}{4}$ sec. 14.

Set an iron post, 3 ft. long, 1 in. diam., 27 ins. in the ground, with brass cap mkd.

S 14
SE $\frac{1}{16}$
1947

Raise a mound of stone, 2 ft. base, 1 $\frac{1}{2}$ ft. high, W. of cor.

- Desc. 170 ft. over N. slope.
 25.25 Gully, course NW. Asc. 12 ft.
 26.40 Small spur, slopes NW. Continue descent 85 ft.
 29.35 Small spur, slopes NW.
 32.80 Foot of N. slope; enter flat, draining N.70°W.
 34.50 Wash, 10 lks. wide, course N.80°W. Asc. 60 ft. over SW.slope.
 38.50 Top of ascent, and over narrow mesa, sloping NW.
 39.62 The center E. 1/16 sec. cor.

From the S. 1/16 sec. cor., of secs. 13 and 14.

S.89°48'W., on the E. and W. center line of SE $\frac{1}{4}$ of sec. 14.
 Desc. 160 ft. over NW. slope, through dense undergrowth.

Subdivision of Section 14
T.4 N., R.13 W.

Chains

5.80 Ravine, course N.20°W. Asc. 50 ft. over NE. slope.
 10.00 Spur, slopes N.20°W., Asc. 15 ft.
 13.00 Desc. 70 ft. over W. slope.
 15.30 Ravine, course N. Asc. 120 ft. over NE. slope.
 19.00 Change of slope to N.
 20.59 The SE. 1/16 sec. cor., at intersection with N. and S. C.L.
 Continue along N. slope.
 21.40 Desc. 40 ft. over NW. slope.
 22.30 Gully, course N. Desc. 70 ft.
 24.60 Gully, course NW. Desc. 30 ft.
 26.60 Ravine, course N.30°W. Asc. 20 ft.
 27.80 Spur, slopes N. Desc. 55 ft. over W. slope.
 29.65 Ravine, course N.20°W. Asc. 95 ft. over NE. slope.
 34.20 Spur, slopes N. Desc. 85 ft.
 36.20 Ravine, course N. Asc. slightly.
 38.50 Spur, slopes N. Desc. 60 ft. over W. slope.
 41.21 The center S. 1/16 sec. cor.

From the center E. 1/16 sec. cor., of sec. 14.

N.0°52'E., on the W. and S. center line of NE $\frac{1}{4}$ of Sec. 14.
 Over rocky mesa, sloping NW.

1.50 Desc. 80 ft. over NE. slope.
 4.80 Enter shallow draw, course N., from East.
 7.90 Leave draw, course NW. Asc. 30 ft. over S. slope.
 8.80 Point of small spur, sloping W. Desc. 15 ft.
 10.30 Gully, course W. Asc. 60 ft. over S. slope.
 14.10 Spur, slopes W. Desc. 30 ft.
 16.00 Flat wash, 20 lks, wide, in mouth of gully, course SW.
 Asc. 40 ft. over SW. slope.
 18.00 Small spur, slopes SW. Desc. 30 ft.
 19.84 Point for NE. 1/16 sec. cor., at the intersection with the
 E. and W. center line of NE. $\frac{1}{4}$ of sec. 14.
 Set an iron post, 3 ft. long 1 in. diam., 32 ins. in the
 ground, with brass cap mkd.

Subdivision of Section 14
T.4 N., R.13 W.

Chains

S 14
NE 1/16
1947

- Raise a mound of stone, $2\frac{1}{2}$ ft. base, $1\frac{1}{2}$ ft. high, W. of cor.
- 20.50 Gully, course S.70°W. Asc. 10 ft.
- 22.40 Gully, course SW. Asc. 115 ft. over S. slope.
- 28.15 Sharp spur, slopes W. Desc. 130 ft. over N. slope.
- 35.40 Gully, course NW. Asc. 30 ft.
- 38.25 Change of slope to N.; desc. 15 ft.
- 39.65 The E. 1/16 sec. cor. of secs. 11 and 14.

From the N. 1/16 sec. cor., of secs. 13 and 14.

S.88°59'W., on the E. and W. center line, of NE. $\frac{1}{4}$ of Sec. 14.
Over hilly land, through scattered undergrowth. Desc. 20 ft.
over W. slope.

- 1.65 Wash, 10 lks. wide, course N.15°W. Asc. 70 ft. over NE.slope.
- 10.80 Divide, 1 ch. S., of shallow saddle in low ridge, bearing
NW. and SE. Desc. 100 ft. over broken, SW. slope.
- 14.95 Gully, course SW.; asc. 15 ft. over SE. slope.
- 18.05 Small spur, slopes SW. Desc. 30 ft. over NW. slope.
- 20.28 The NE. 1/16 sec. cor., at intersection with the N. and S.
center line.

Continue descent 30 ft.

- 22.40 Gully, course SW. Asc. 35 ft. over SE. slope.
- 25.80 Shoulder of spur, from NE. Desc. 15 ft. along spur.
- 26.50 Change of slope to W., desc. 75 ft.
- 30.30 Foot of slope, and enter sandy wash area, draining NW.

Continue descent 40 ft. over gradual slope.

- 40.55 The center N. 1/16 sec. cor.,

From the W. 1/16 sec. cor. of secs. 14 and 23.

N.0°43'E., on the N. and S. center line of the SW. $\frac{1}{4}$ of Sec. 14.
Over broken land, through scattered undergrowth.

Subdivision of Section 14
T.4 N., R.13 W.

Chains

- Desc. 18 ft. over N.E. slope.
- 0.50 Drain, course E. Asc. 15 ft.
- 2.00 Summit of small hill. Desc. 35 ft. over N. slope.
- 4.50 Flat, sandy wash, 1.50 chs. wide, course E. The NW. cor. of a dilapidated building bears East, 52 lks. dist.
- Asc. 40 ft. over SE. slope.
- 6.40 Point of spur, slopes E., Desc. 55 ft.
- 12.90 Small spur, slopes N.70°E. Along E. slope.
- 16.80 Small spur, slopes E. Desc. 20 ft. over broken E. slope.
- 19.77 Point for SW. 1/16 sec. cor., at intersection with the E. and W. center line of SW. 1/4 sec. 14.
- Set an iron post, 3 ft. long, 1 in. diam., 30 ins. in the ground, with brass cap mkd.
- S 14
SW 1/16
1947
- Raise a mound of stone, 4 ft. base, 6 ins. high, around iron post.
- 20.70 Point of small spur, sloping E. Desc. 65 ft. over NE. slope.
- 23.35 Old roadway, bears NW. and SE.
- 27.25 Enter sandy wash, course NW.
- 30.00 Leave wash; asc. 35 ft. over SW. slope.
- 34.00 Top of ascent, and over flat spur, sloping N. Desc. 20 ft.
- 39.32 Three strand wire fencing, bears E. and W.
- 39.45 South wall of small masonry building, 20 lks. square, 8½ ft. high.
- 39.56 Point for center W. 1/16 sec. cor., within masonry building and S.89°18'W., 30 lks. dist., from witness corner monument.

From the S. 1/16 sec. cor. of secs. 14 and 15.

N.88°57'E., on the E. and W. center line of SW. 1/4 of sec. 14.

Over broken land, through moderate undergrowth. Desc. 35 ft. over E. slope.

- 3.25 Drain, course NE. Asc. 35 ft.
- 5.35 Small spur, slopes NE. Desc. 35 ft.
- 8.30 Drain, course N. 20°E. Asc. 65 ft. over NW. slope.
- 10.00 Spur, slopes N.

Subdivision of Section 14
T.4 N., R.13 W.

Chains

- 13.15 Spur, slopes N.10°W. Desc. 55 ft.
- 16.00 Shallow draw, course N. Asc. 50 ft. over W. slope.
- 18.15 Spur, slopes N. Desc. 25 ft. over E. slope.
- 19.49 The SW. 1/16 sec. cor., at intersection with the N. and S. center line.
- N.88°57'E., beginning new measurement.
- Desc. 30 ft. over E. slope.
- 1.50 Foot of slope; enter sandy wash, course N., in shallow draw.
- 2.05 Roadway, bears N. and S.
- 7.50 Leave wash; asc. 30 ft.
- 9.20 Low, narrow spur, extends N.30°W. Over N. slope.
- 9.74 point for center E. SW. 1/64 sec. cor.
- Set an iron post, 3 ft. long, 1 in. diam., 32 ins. in the ground, with brass cap mkd.
- S 14

C-E-SW

1/64

1947
- Raise a mound of stone, 2 ft. base, 1½ ft. high, W. of cor.
- 10.75 Drain, course N. Asc. 30 ft.
- 13.85 Gully, course N.
- 15.60 Small spur, slopes N. Desc. 23 ft.
- 17.20 Gully, course N.15°W., Asc. 18 ft. over W. slope.
- 19.48 The center S. 1/16 sec. cor.,
-
- From the E. W. 1/64 sec. cor., of sec. 14 and 23.
- N.1°02'E., on the N. and S. center line of SE.¼ SW.¼ of Sec. 14.
- Over broken land, through moderate undergrowth. Desc. 5 ft.
- 0.40 Drain, course NW. Asc. 25 ft. over SW. slope.
- 3.20 Short spur, bears NW. Desc. 20 ft. over NE. slope.
- 5.50 Enter sandy basin, draining NW. Desc. 65 ft. over flat NW. slope.
- 10.30 Wash, 15 lks. wide, course NW.
- 17.00 Asc. SW. slope 25 ft.
- 19.35 Spur, slopes NW.

Subdivision of Section 14
T.4 N., R.13 W.

Chains

- 19.71 The center E-SW $\frac{1}{64}$ sec. cor.
N.1°01'E., on the N. and S. center line of NE. $\frac{1}{4}$ SW. $\frac{1}{4}$ sec. 14,
beginning new measurement.
Desc. 80 ft. over slightly rolling N. slope, changing to NE.,
through heavy undergrowth.
8.00 Enter sandy flat, draining N.; continue descent 35 ft.
19.73 The center E-W $\frac{1}{64}$ sec. cor., of sec. 14

Subdivision of Section 12

- From the $\frac{1}{4}$ sec. cor. of secs. 12 and 13.
N.0°05'E., on the N. and S. center line of sec. 12.
Asc. 5 ft.
0.15 South bank of reservoir, 85 lks. wide, 60 lks. distant from
the E. margin thereof. Across reservoir, about 6 ft. deep,-
now dry.
1.40 North bank of reservoir, 20 lks. from E. margin, Desc. 10 ft.
1.90 Roadway, bears E. and W. Desc. 80 ft. over N. slope, thru
scattered undergrowth.
6.00 Shallow draw, course W., turning to NW. Asc. 170 ft. over
SW. slope.
13.00 Low ridge, from S.70°E., rises to small conical peak to the
N. Continue ascent 50 ft. over SE. slope.
17.30 East side of top of conical hill. Desc. 120 ft. over chang-
ing NE. to N. slope.
20.80 An iron pipe, 1 in. diam., driven firmly in the ground, 6
ins., up, bears West, 7 lks. dist. Continue descent 40 ft.
over a decreasing N. slope.
27.80 Gully, course N.70°W. Over rolling land, asc. 20 ft.
32.40 Small, flat spur, bears W.
33.00 Gully, course W. Asc. 40 ft.
37.00 Flat spur, slopes N.80°W. Desc. 45 ft. over N. slope.
40.96 Point for center $\frac{1}{4}$ sec. cor., at intersection of the E. and
W. center line.
Set an iron post, 3 ft. long, 1 in. diam., 32 ins. in the
ground, with brass cap mkd.
C $\frac{1}{4}$ S 12
1947
Raise a mound of stone, 3 ft. base, 1 $\frac{1}{2}$ ft. high, NW. of
corner.

Subdivision of Section 12
T.4 N., R.13 W.

Chains

Four strand barbed wire fencing, on metal posts, extends N. and W. from corner.

N.0°05'E., beginning new measurement. Desc. 10 ft. over N. slope, along wire fencing.

0.75 Shallow draw, course N.60°W. Asc. 90 ft. over SW. slope.

6.37 Three strand barbed wire fencing, on wood posts, extends N. and W.

7.00 Change of slope to NW., desc. 60 ft.

12.55 Ravine, course S.80°W. Asc. 25 ft.

15.50 Flat spur, extends SW. Desc. 15 ft.

16.20 Gully, course SW. Asc. 40 ft.

18.00 Scrub road, from SW. turns to NW.,

19.43 Point for center N. 1/16 sec. cor.

Set an iron post, 3 ft. long, 1 in. diam., 35 ins. in the ground, with brass cap mkd.

$$\begin{array}{c} \text{C} \\ \text{N } \frac{1}{16} \text{S } 12 \\ \text{C} \\ 1947 \end{array}$$

Bury a granite stone, 8 x 6 x 4 ins., marked + alongside iron post.

Raise a mound of stone, 3 ft. base, 1½ ft. high, W. of cor.

A cylindrical metal water storage tank, 18 ft. diam., bears N.80°W., 240 lks. dist.

Asc. 120 ft. over S. slope.

25.50 Change of slope to NW.; desc. 215 ft.

29.55 Drain, course N.70°W.

38.86 The ¼ sec. cor. of secs. 1 and 12.

From the ¼ sec. cor. of secs. 11 and 12.

N.89°55'E., on the E. and W. center line of Sec. 12.

Over slightly rolling land, along wire fencing.

3.70 Enter wash, course NW.

5.38 Leave wash.

7.75 Wire fencing, bears N.50°W. and S.50°E.,

8.15 Road, bears NW. and SE.

9.65 Wire fencing, extends S. and E.

Subdivision of Section 12
T.4 N., R.13 W.

Chains

- 20.00 Asc. 70 ft. over gradual W. slope.
34.00 Low spur, slopes N.70°W. Desc. 30 ft.
39.24 The center $\frac{1}{4}$ sec. cor., at intersection with the N. and S.
center line.

N.89°55'E., beginning new measurement.

Along N. slope.

- 2.70 Shallow draw, course N.75°W. Asc. 65 ft. over SW. slope.
6.00 Gully, course SW.
8.50 Gulch, 15 ft. deep, course SW.
11.80 Small spur, slopes SW. Desc. 10 ft. over S. slope.
14.50 Ravine, course SW. Asc. 120 ft. over W. slope.
19.20 Shoulder of small spur, from NW. Along S. slope.
19.61 Point for center E. 1/16 sec. cor.,

Set an iron post, 3 ft. long 1 in. diam., 32 ins. in the
ground, with brass cap mkd.

E $\frac{1}{16}$
C — C
S 12
1947

Raise a mound of stone, 3 ft. base, $1\frac{1}{2}$ ft. high, W. of cor.

Asc. gradually, over broken S. slope.

- 28.10 Drain, course S.
29.80 Gulch, course SW. Asc. 90 ft. over SW. slope.
38.90 Drain, course SW.
39.22 The $\frac{1}{4}$ sec. cor., of sec. 12 only, on the E. bdy. of TP.

From the center E 1/16 sec. cor.

N.0°37'W., on the N. and S. center line of NE. $\frac{1}{4}$ of sec. 12.

- 0.10 Shoulder of spur, from NE. Desc. 60 ft. over NW. slope.
2.60 Ravine, course S.80°W. Asc. 200 ft. over S. slope.
10.25 Sharp, rocky spur, slopes W., Desc. 185 ft. over N. slope.
17.10 Gully, course NW.
17.80 Ravine, course W. Asc. 25 ft.
19.30 Small, flat spur, bears W.
19.40 Point for NW. 1/16 sec. cor. at intersection with the E. and
W. center line of NE. $\frac{1}{4}$ Sec. 12.

Subdivision of Section 12
T.4 N., R.13 W.

Chains

Set an iron post, 3 ft. long, 1 in. diam., 30 ins. in the ground, with brass cap mkd.

S. 12
NE $\frac{1}{16}$
1947

Bury a granite stone, 10 x 8 x 3 ins., marked + alongside iron post.

Raise a mound of stone, 3 ft. base, $1\frac{1}{2}$ ft. high, W. of cor.

Desc. 25 ft. over gradual N. slope.

20.70 Drain, course NW.

22.50 Ravine, course S.60°W. Asc. 265 ft. over S. slope, changing to SE.

30.80 Shoulder of spur, sloping S.10°W., Change of slope to S.

33.20 Spur, slopes S.80°W. Desc. 130 ft. over NW. slope.

36.00 Change of slope to N.

38.75 Three strand barbed wire fencing, bears E. and W.

38.82 The E. $\frac{1}{16}$ sec. cor. of secs. 1 and 12.

From the center N.1/16 sec. cor.,

N.89°59'E., on the E. and W. center line of the NE. $\frac{1}{4}$ Sec. 12.
over broken land, along S. slope.

0.13 Three strand barbed wire fencing, bears N. and S.

1.85 Cabin, bears South, 2.50 chs. dist.

8.20 Gully, course SW.

10.80 point of small spur, slopes SW.

11.50 Ravine, course SW.

14.30 Ravine, course SW., turning to W. Asc. 70 ft. over W.slope.

17.50 Shoulder of flat spur, from E.

19.35 The NE. $\frac{1}{16}$ sec. cor., at intersection with the N. and S. center line of NE. $\frac{1}{4}$ of sec. 12.

22.00 Asc. 300 ft. over an increasing SW. slope.

35.20 Gully, course SW.

38.70 The N.1/16 sec. cor., of sec. 12 only, on the E. bdy. of the Tp.

T.4 N., R.13 W.

General Description

Sections 12 and 14, T.4 N., R.13 W., border Soledad Canyon, in the north slope of the Sierra Madre Mountains, and lie in an elevation ranging from 2500 to 3500 ftt. The land is heavily rolling and broken, the soil a rocky clay of poor quality; a sandy gravel predominates in the bottom areas. There is a scattered growth of scrub cedar, or juniper, some oak, and some narrow belts of cottonwood along the canyon bottom. A moderately heavy growth of chaparral, creosote brush, sumac, cherry and a lesser growth of sage and buckwheat is notes in the higher elevations. Some fair pasturage is available where open conditions permit grasses to become established.

The main line of the Southern Pacific Railroad follows Soledad Canyon. Soledad Highway, a second class, oil surfaced road, closely parallels the rail line.

Camp Acton, a Los Angeles County Farm, is situated in the NW. $\frac{1}{4}$ of Section 12. There is not now any other development or activity in the area; early settlement has been largely abandoned.
